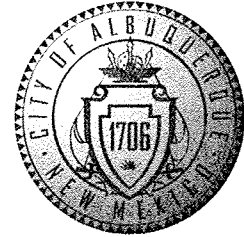


CITY OF ALBUQUERQUE



January 28, 2009

John M. MacKenzie, P.E.
Mark Goodwin & Associates, P.A.
P.O. Box 90606
Albuquerque, NM 87199

APD 002E
5/2/14

RE: Seville Unit 7A, (A-11/D010)
Engineers Certification for Release of Financial Guaranty
Engineers Stamp dated 7/31/2006
Engineers Certification dated 01/27/2009

Mr. Mackenzie,

PO Box 1293

Based upon your Engineer's Certification submitted on 1/28/2009, the above referenced plan is adequate and satisfies the Grading and Drainage Certification for Release of Financial Guaranty.

Albuquerque

If you have any questions, you can contact me at 924-3982.

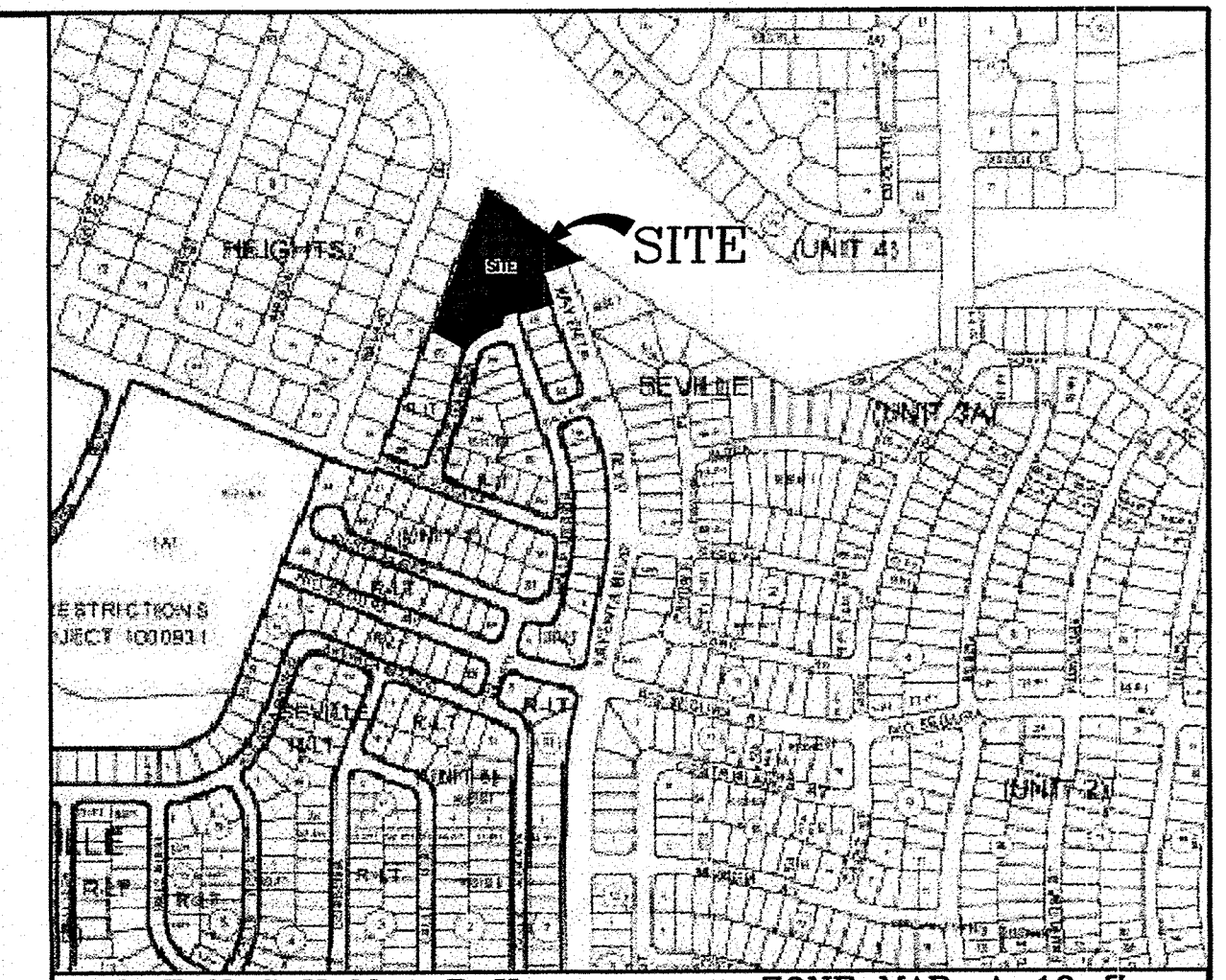
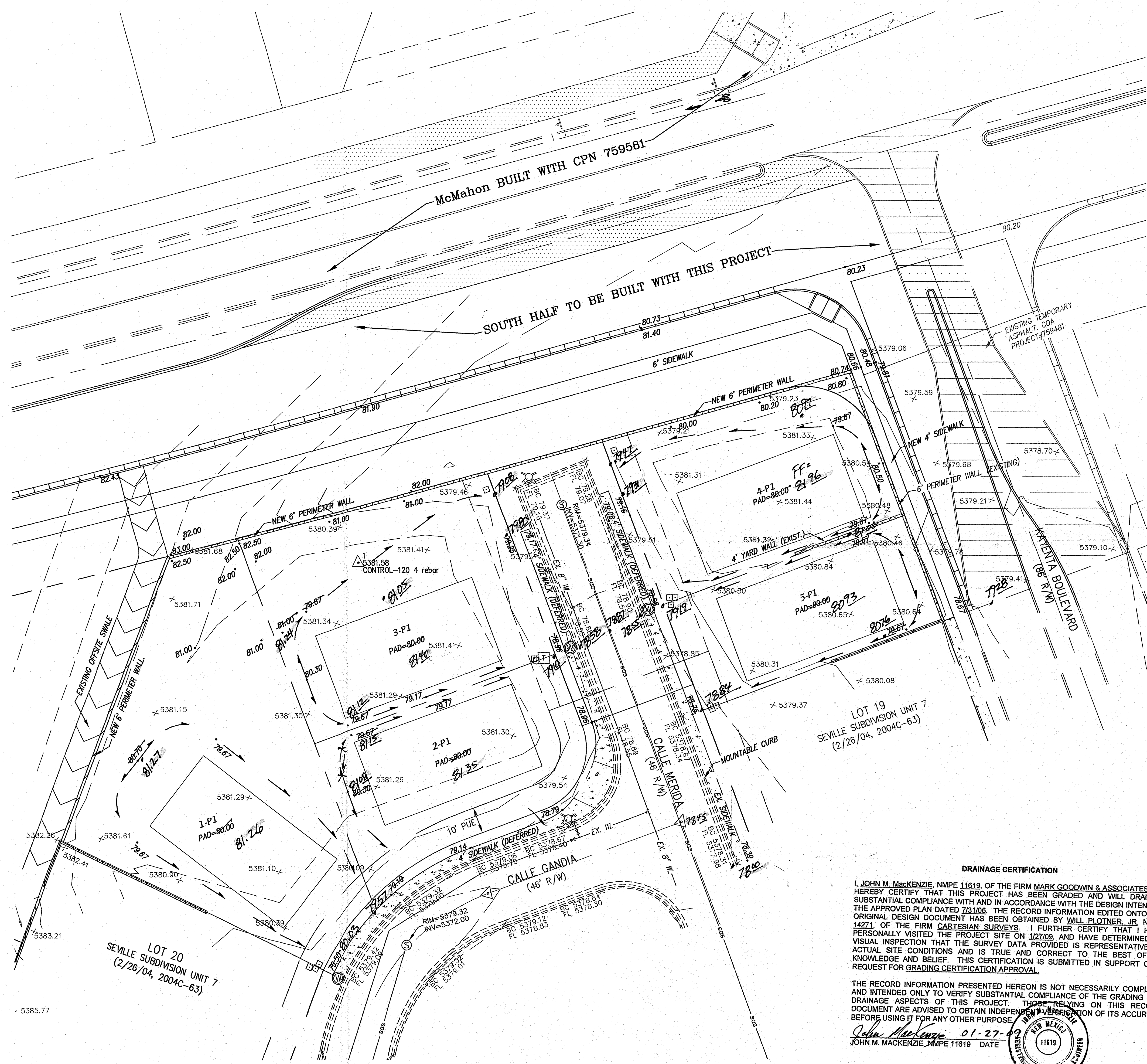
Sincerely,

NM 87103

Timothy E. Sims
Plan Checker, Planning Dept. - Hydrology
Development and Building Services

www.cabq.gov

C: Marilyn Maldonado, COA# 722680
File



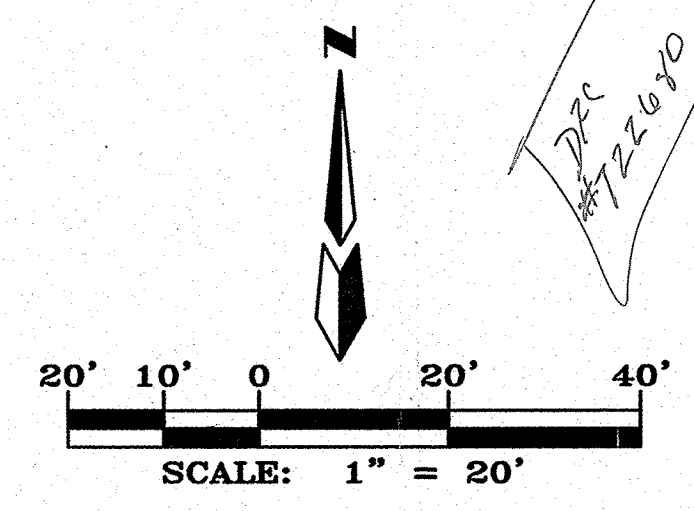
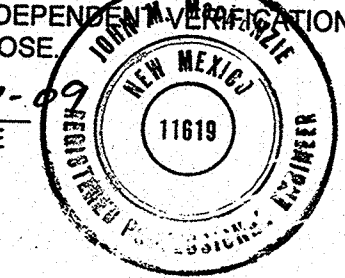
BENCHMARK
ACS MONUMENT "1-A10" HAVING AN ELEVATION OF 5415.16 (SLD 1929).

LEGAL DESCRIPTION
TRACT NUMBER B-2-B-1, OF SEVILLE SUBDIVISION UNIT 7, AS THE SAME IS SHOWN AND DESIGNATED ON THE MAP OF SAID SUBDIVISION, FILED IN THE OFFICE OF THE COUNTY CLERK OF BERNALILLO COUNTY, NEW MEXICO ON FEBRUARY 26, 2004, IN BK. 2004C, PAGE 63.

LEGEND	
	EXISTING CURB
	CENTERLINE MONUMENT "LS 9750"
	WATER METER
	EXISTING CONTOUR (MAJOR)
	EXISTING CONTOUR (MINOR)
	EXISTING SPOT ELEVATION
	EXISTING SANITARY SEWER MANHOLE
	EXISTING FIRE HYDRANT
	EXISTING ELECTRIC TRANSFORMER
	EXISTING FENCE
	EXISTING SAS LINE
	EXISTING WATER LINE
	NEW MOUNTABLE CURB & GUTTER
	NEW SIDEWALK
	NEW RIGHT-OF-WAY
	NEW CENTERLINE
	NEW LOT LINES
	NEW EASEMENTS
	NEW RETAINING WALL
	NEW PERIMETER WALL
	NEW SPOT ELEVATIONS
	NEW FLOW DIRECTION

DRAINAGE CERTIFICATION
I, JOHN M. MACKENZIE, NMPE 11619, OF THE FIRM MARK GOODWIN & ASSOCIATES, P.A. HEREBY CERTIFY THAT THIS PROJECT HAS BEEN GRADED AND WILL DRAIN IN SUBSTANTIAL COMPLIANCE WITH AND IN ACCORDANCE WITH THE DESIGN INTENT OF THE APPROVED PLAN DATED 7/31/06. THE RECORD INFORMATION EDITED ONTO THE ORIGINAL DESIGN DOCUMENT HAS BEEN OBTAINED BY WILL PLOTNER, JR., NMPS 14271, OF THE FIRM CARTESIAN SURVEYS. I FURTHER CERTIFY THAT I HAVE PERSONALLY VISITED THE PROJECT SITE ON 12/7/09, AND HAVE DETERMINED BY VISUAL INSPECTION THAT THE SURVEY DATA PROVIDED IS REPRESENTATIVE OF ACTUAL SITE CONDITIONS AND IS TRUE AND CORRECT TO THE BEST OF MY KNOWLEDGE AND BELIEF. THIS CERTIFICATION IS SUBMITTED IN SUPPORT OF A REQUEST FOR GRADING CERTIFICATION APPROVAL.

THE RECORD INFORMATION PRESENTED HEREON IS NOT NECESSARILY COMPLETE AND INTENDED ONLY TO VERIFY SUBSTANTIAL COMPLIANCE OF THE GRADING AND DRAINAGE ASPECTS OF THIS PROJECT. THOSE RELYING ON THIS RECORD DOCUMENT ARE ADVISED TO OBTAIN INDEPENDENT VERIFICATION OF ITS ACCURACY BEFORE USING IT FOR ANY OTHER PURPOSE.
John Mackenzie 01-27-09
JOHN M. MACKENZIE, NMPE 11619 DATE



SEVILLE SUBDIVISION UNIT 7A

EXHIBIT 4

MARK GOODWIN & ASSOCIATES, P.A.
CONSULTING ENGINEERS
P.O. BOX 90606
ALBUQUERQUE, NEW MEXICO 87199
(505)828-2200, FAX (505)797-9539

Designed: B/JG	Drawn: CAR	Checked: DMG	Sheet 1 of 1
Scale: 1" = 40'	Date: 5/30/06	Job: Exhibit_A	