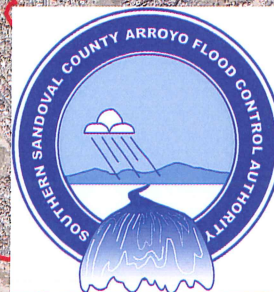


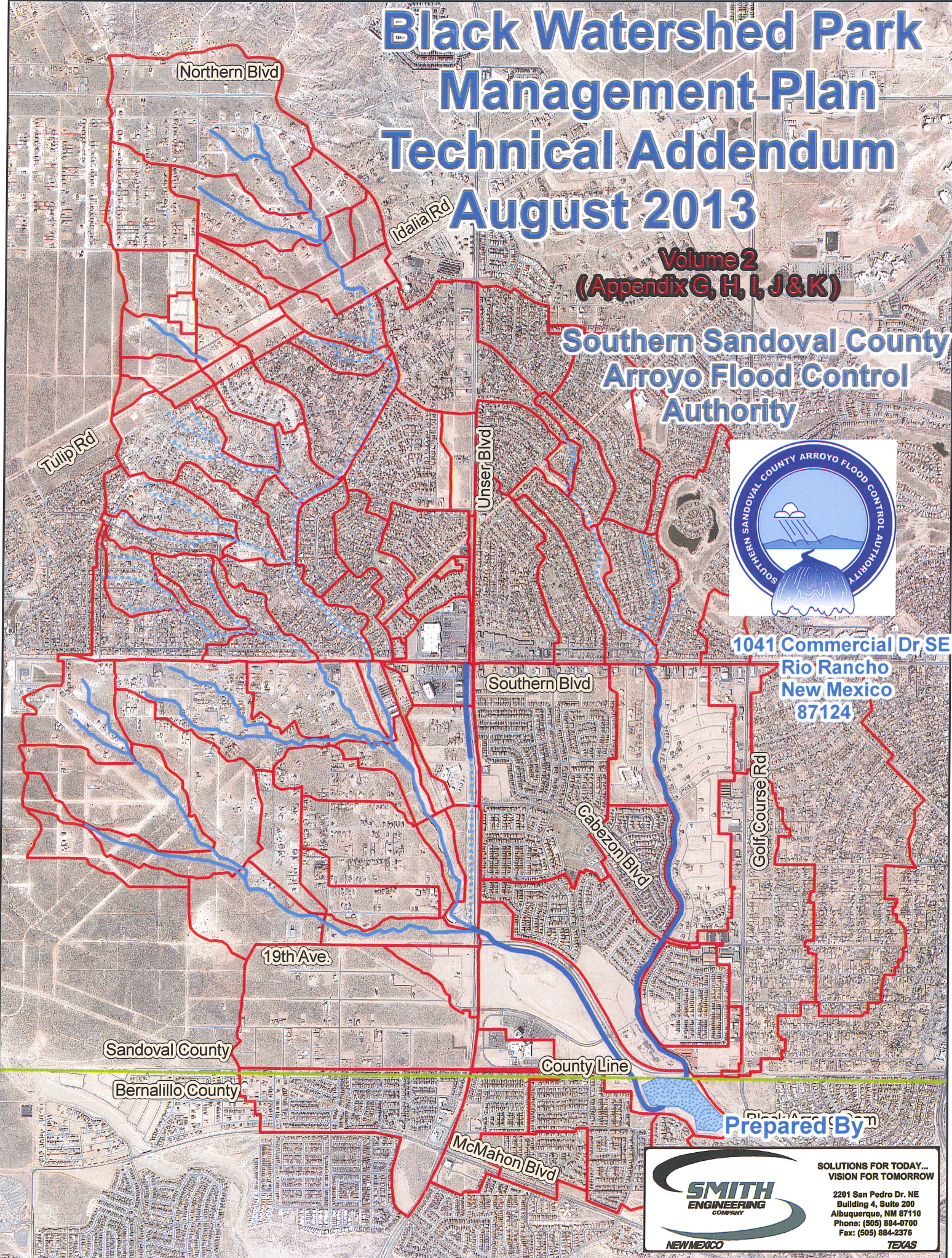
Black Watershed Park Management Plan Technical Addendum August 2013

**Volume 2
(Appendix G, H, I, J & K)**

**Southern Sandoval County
Arroyo Flood Control
Authority**



1041 Commercial Dr SE
Rio Rancho
New Mexico
87124



Prepared By ^{SMITH}

SMITH
ENGINEERING
COMPANY
NEW MEXICO

SOLUTIONS FOR TODAY...
VISION FOR TOMORROW

2201 San Pedro Dr. NE
Building 4, Suite 200
Albuquerque, NM 87110
Phone: (505) 884-0700
Fax: (505) 884-2376
TEXAS

VOLUME 2 - APPENDICES

Technical Backup

Appendix G Annotated Photographs

Photographs include field measurements for culvert headwater depths and select channel dimensions

Appendix H Hydrologic Data

Select Pages from :
SSCAFCA Development Process Manual (DPM), July 31, 2009

Flow Divide Locations (Diversion Flows)

Lateral Erosion Envelope Data and Computations (LEE Lines)

Flow Master Output Files that apply to the LEE Line Computations

Rainfall Data / Rainfall Initial Abstraction and

Uniform Loss Rate Computations

Existing Conditions - **

DEVEX Conditions (Full Development Conditions) - **

***** very large Excel Spreadsheets are not printed
however provided as digital files to SSCAFCA***

HEC-HMS Hydrologic Models -

(the digital models have been provided to SSCAFCA)

Appendix I

Detention Pond Data and HEC-HMS Pond Routing Output

Existing Detention Ponds

Elevation – Volume – Discharge Data and Calculations

Proposed Detention Ponds

Elevation – Volume – Discharge Data and Calculations

Sugar Pond

Lisbon Pond

19th Ave. Dam

HEC-HMS Output for Existing Conditions Detention Pond Routings

HEC-HMS Output for DEVEX Conditions Detention Pond Routings

HEC-HMS Output for Ultimate Conditions Detention Pond Routings

Appendix J

Culvert Hydraulic Analyses

Culvert Master Output

Unser Blvd. SE Culvert Data (West Branch at Unser Blvd. SE)

Appendix K

Copies of Previous Reports / Plans

(Due to volume, these have been provided to SSCAFCA as PDFs)