

Ron Bordelon

From: Regina Okoye <rokoye@modulusarchitects.com>
Sent: Tuesday, November 30, 2021 4:47 PM
To: Ron Bordelon
Subject: FW: TIS Inquiry Ht#A11D017

See email string below.

From: Grush, Matthew P. [<mailto:mgrush@cabq.gov>]
Sent: Monday, October 4, 2021 3:55 PM
To: Regina Okoye <rokoye@modulusarchitects.com>
Subject: RE: TIS Inquiry Ht#A11D017

Good afternoon Regina,

The recently approved Traffic Impact Study for this area will cover the traffic study requirements for your site development. No site specific traffic study are required until the traffic volumes projections exceed 110% of the traffic volumes in the TIS. This will be the first site to be developed. The approved TIS covers the Traffic Scoping form requirements.

Thank you,



Matt Grush, P.E., PTOE
Senior Engineer

505-924-3362

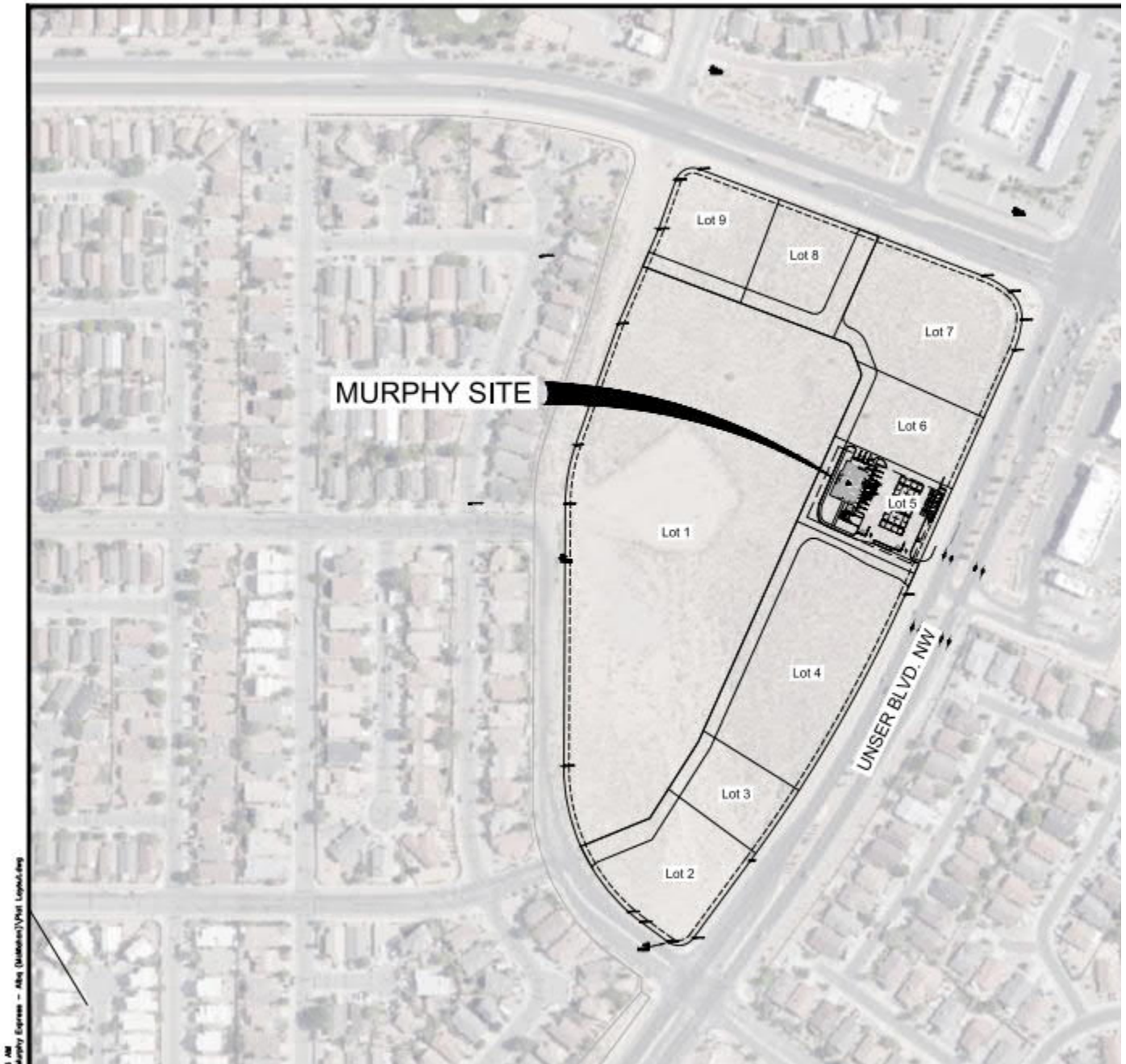
mgrush@cabq.gov

cabq.gov/planning

From: Regina Okoye <rokoye@modulusarchitects.com>
Sent: Monday, October 4, 2021 3:38 PM
To: Grush, Matthew P. <mgrush@cabq.gov>
Subject: TIS Inquiry

Hello Matt,

I have a clarification question. We have a site at the SWC of Unser and McMahon. The entire site (19 acres) had a traffic study done by Terry Brown on December 16, 2020. The site has been replatted and the a new light vehicle fueling station is going to occupy a new lot 5 (see below). Are we required submit a traffic scoping form for a site specific use if an overall study has already been done?



REGINA OKOYE, ENTITLEMENTS PROJECT MANAGER
MODULUS ARCHITECTS & LAND USE PLANNING, INC.

100 Sun Avenue NE, Suite 600
Albuquerque, NM 87109
Office 505.338.1499 (Ext. 1003)
Mobile + Text 505.267.7686





****PLEASE NOTE THAT WE HAVE MOVED! OUR NEW ADDRESS IS: 100 SUN AVE. NE SUITE 600, ALB. NM,
87109****