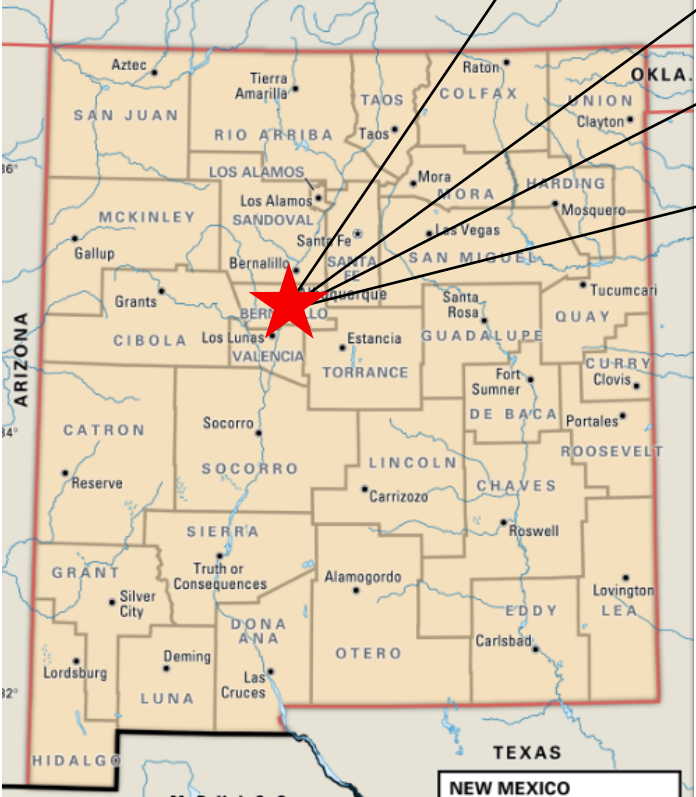
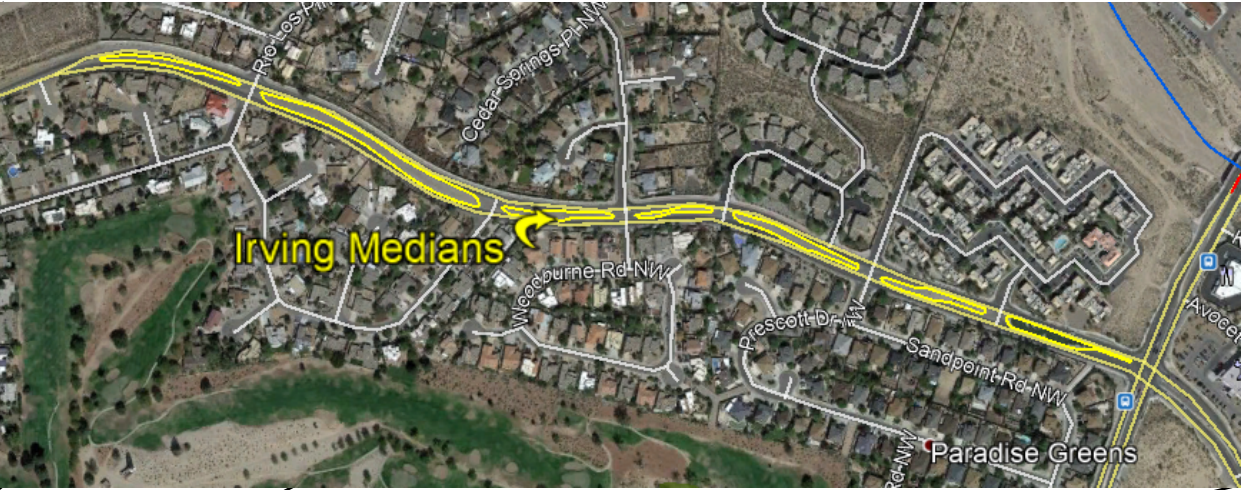


IRVING MEDIANS LANDSCAPE IMPROVEMENTS

IRVING FROM GOLF COURSE TO WEST OF TIMAN

TEMPORARY EROSION AND SEDIMENT CONTROL PLAN

PAGE INDEX	
1	TITLE PAGE
2	SWPPP INFO AND NOTES
3	DETAILS
4-7	TEMPORARY EROSION CONTROL PLAN





GPS COORDINATES: **35.2022, -106.6877**

SCAN OR CLICK FOR DETAILED SITE INFORMATION



[VIEW ONLY DOCUMENTS AND INSPECTIONS](#)

 06/02/2021 CPESC Stamp	IRVING MEDIANS LANDSCAPE IMPROVEMENTS <small>PROJECT TITLE</small>	
	ALBUQUERQUE, NM, BERNALILLO COUNTY <small>CITY, COUNTY, STATE</small>	
	06/02/2021 <small>DATE</small>	
	C. DURKIN <small>DRAWN BY</small>	

STORMWATER POLLUTION PREVENTION PLAN INFORMATION

PERMIT NUMBER: NMR1003YU

NMR100000 STATE OF NEW MEXICO, EXCEPT INDIAN COUNTRY
NMR10I000 INDIAN COUNTRY WITHIN THE STATE OF NEW MEXICO, EXCEPT NAVAJO RESERVATION LANDS THAT ARE COVERED UNDER ARIZONA PERMIT AZR10I000 AND UTE MOUNTAIN RESERVATION LANDS THAT ARE COVERED UNDER COLORADO PERMIT COR10I000.

OPERATOR NAME: LEE LANDSCAPES

OPERATOR POINT OF CONTACT: AARON SCOTT 505-822-8722 AARONS@LEELANDSCAPES.COM

NOI PREPARED BY: INSPECTIONS PLUS, LLC.

PROJECT/SITE NAME: IRVING MEDIANS LANDSCAPE IMPROVEMENTS

PROJECT/SITE ADDRESS: IRVING BLVD FROM GOLF COURSE TO WEST OF TIMAN

LATITUDE	35.2022
LONGITUDE	-106.6877
ESTIMATED PROJECT START DATE	06/16/2021
ESTIMATED PROJECT COMPLETION DATE	09/03/21
ESTIMATED AREA TO BE DISTURBED	1.8
TYPE OF CONSTRUCTION	LANDSCAPING
DEMOLITION OF ANY STRUCTURES, 10,000 SQ FT OF GREATER BUILT OR RENOVATED BEFORE JANUARY 1, 1980?	NO
WAS THE PREDEVELOPMENT LAND USED FOR AGRICULTURE?	NO
COMMENCED EARTH DISTURBING ACTIVITIES?	NO
DISCHARGE TO MS4? MS4 NAME?	YES CITY OF ALBUQUERQUE
SURFACE WATERS WITHIN 50FT?	NO
RECEIVING WATER?	CALABACILLAS ARROYO
IS RECEIVING WATER IMPAIRED? TIER DESIGNATION	NO
WHAT ARE THE IMPAIRMENTS, IF ANY?	N/A



SWPPP CONTACT INFORMATION: AARON SCOTT 505-822-8722 AARONS@LEELANDSCAPES.COM

ENDANGERED SPECIES CRITERIA: CRITERION "A", NO CRITICAL HABITATS IN PROJECT AREA

HISTORIC PRESERVATION CRITERIA: CRITERION "A" PREVIOUS DEVELOPMENT

EROSION CONTOL NOTES
ESC Plan Standard Notes (2021-03-24)

- 1.All Erosion and Sediment Control (ESC) work on these plans, except as otherwise stated or provided hereon shall be permitted, constructed, inspected, and maintained in accordance with:
- a.The City Ordinance § 14-5-2-11, the ESC Ordinance,
b.The EPA's 2017 Construction General Permit (CGP), and
c.The City Of Albuquerque Construction BMP Manual.
- 2.All BMP's must be installed prior to beginning any earth moving activities except as specified hereon in the Phasing Plan. Construction of earthen BMP's such as sediment traps, sediment basins, and diversion berms shall be completed and inspected prior to any other construction or earthwork. Self-inspection is required after installation of the BMPs and prior to beginning construction.
- 3.Self-inspections - At a minimum a routine compliance self-inspection is required to review the project for compliance with the Construction General Permit once every 14 days and after any precipitation event of 1/4 inch or greater until the site construction has been completed and the site determined as stabilized by the city. Reports of these inspections shall be kept by the person or entity authorized to direct the construction activities on the site and made available upon request.
- 4.Corrective action reports must be kept by the person or entity authorized to direct the construction activities on the site and made available upon request.
- 5.Stabilization reports must be kept by the person or entity authorized to direct the construction activities on the site and made available upon request. Reports should include records of weed removal per City Ordinance (§ 9-8-1), sterilization, soil test results and recommendation, materials and manufacturer's specifications for application rates, estimated functional longevity, methods of application, inspection and maintenance. The reduced self-inspection schedule in CGP 4.4.1 applies to stabilized area and any damaged or worn stabilization must be identified in the reports along with weed problems. Corrective actions for stabilization shall be documented in a stabilization report including actual rates and dates of stabilization, and the materials and manufacturer's specifications used.
- 6.BMPs shall be inspected and maintained until all disturbed areas are stabilized in accordance with the Final Stabilization Criteria (CGP 2.2.14.b). Generally, all disturbed areas, other than structures and impervious surfaces, must have uniform perennial vegetation that provides 70 percent or more of the cover provided by native vegetation or seed the disturbed area and provide non-vegetative mulch that provides cover for at least three years without active maintenance. Final stabilization must be approved by the City of Albuquerque prior to removal of BMPs and discontinuation of inspections.

 06/02/2021 CPESC Stamp	IRVING MEDIANS LANDSCAPE IMPROVEMENTS <small>PROJECT TITLE</small>	
	ALBUQUERQUE, NM, BERNALILLO COUNTY <small>CITY, COUNTY, STATE</small>	
	06/02/2021 <small>DATE</small>	 INSPECTIONS PLUS
	C. DURKIN <small>DRAWN BY</small>	

SEDIMENT TRACK OUT CONTROL



- BMP Objectives**
- Sediment Control

SILT FENCE



- BMP Objectives**
- Sediment Control
 - Sheet Flow Runoff Control
 - Wind Erosion Control

BERMS AND SWALES



- BMP Objectives**
- Runoff Control
 - Run-on Diversion

MULCH SOCK/STRAW WATTLE



- BMP Objectives**
- Sediment Control
 - Reduce Runoff Velocity
 - Inlet Protection

INLET PROTECTION



- BMP Objectives**
- Sediment Control
 - Sheet Flow Runoff Control
 - Wind Erosion Control

LEGEND

TEMPORARY EROSION AND SEDIMENT CONTROL PLAN

PP-PP-PP- PROJECT PERIMETER

STAGING AREA

CHEMICAL TOILET

TEMPORARY SEDIMENT POND

C-C-C- EXISTING CURB

FLOW DIRECTION

CONCRETE WASHOUT



POSTING SIGN

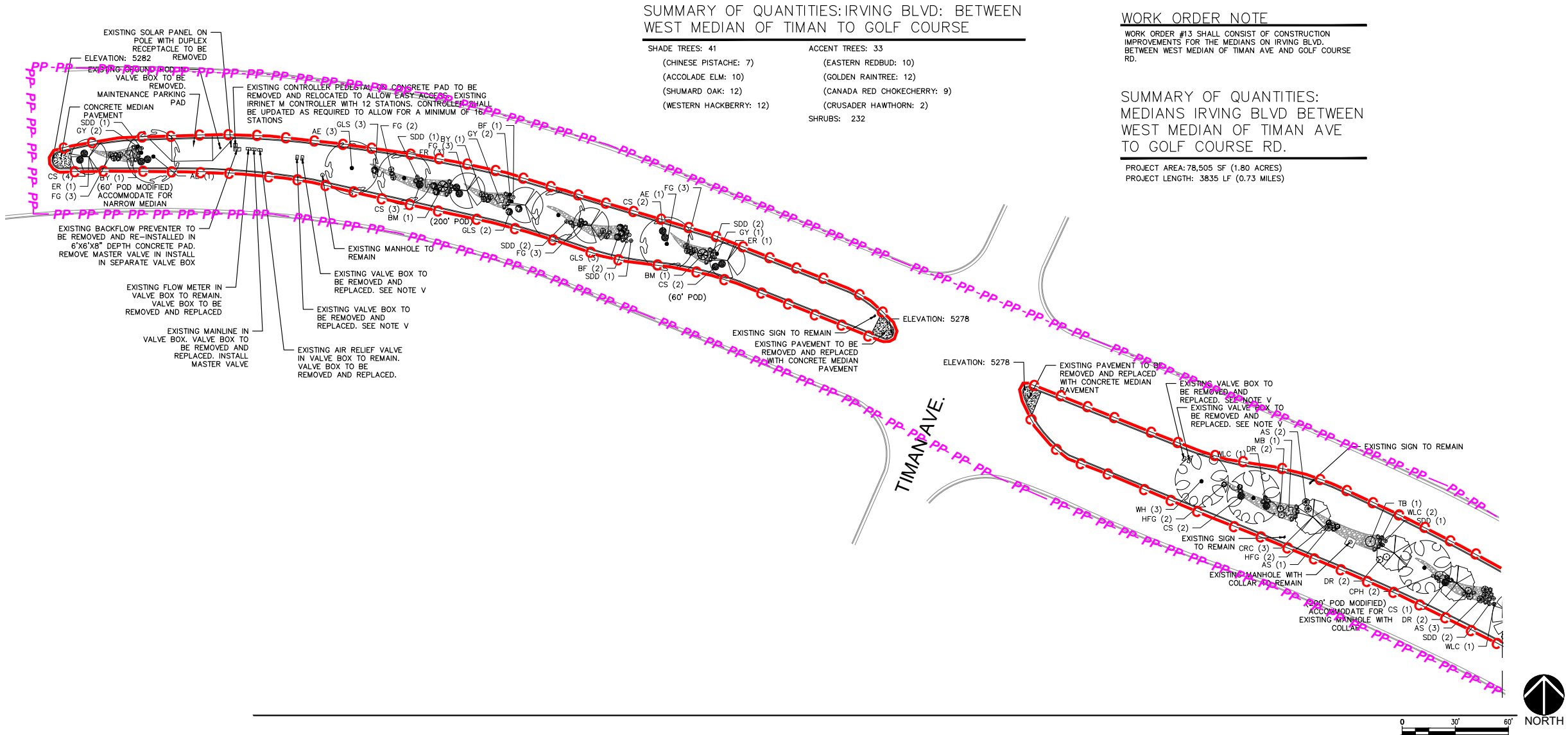
SILT FENCE

STABILIZED CONTRUCTION ENTRANCE

OUTFALL

DEBRIS CONTAINMENT

 <p>06/02/2021 CPESC Stamp</p>	IRVING MEDIANS LANDSCAPE IMPROVEMENTS <small>PROJECT TITLE</small>	
	ALBUQUERQUE, NM, BERNALILLO COUNTY <small>CITY, COUNTY, STATE</small>	
	06/02/2021 <small>DATE</small>	
	C. DURKIN <small>DRAWN BY</small>	



SCHEDULE/SEQUENCING OF CONSTRUCTION



- 1. POST PERMITS
- 2. INSTALL REQUIRED BMPs
 - 2.a. PERIMETER CONTROLS
- 3. LANDSCAPE IMPROVEMENTS
- 4. MATERIAL DISPOSAL OFFSITE
- 5. PUNCH LIST

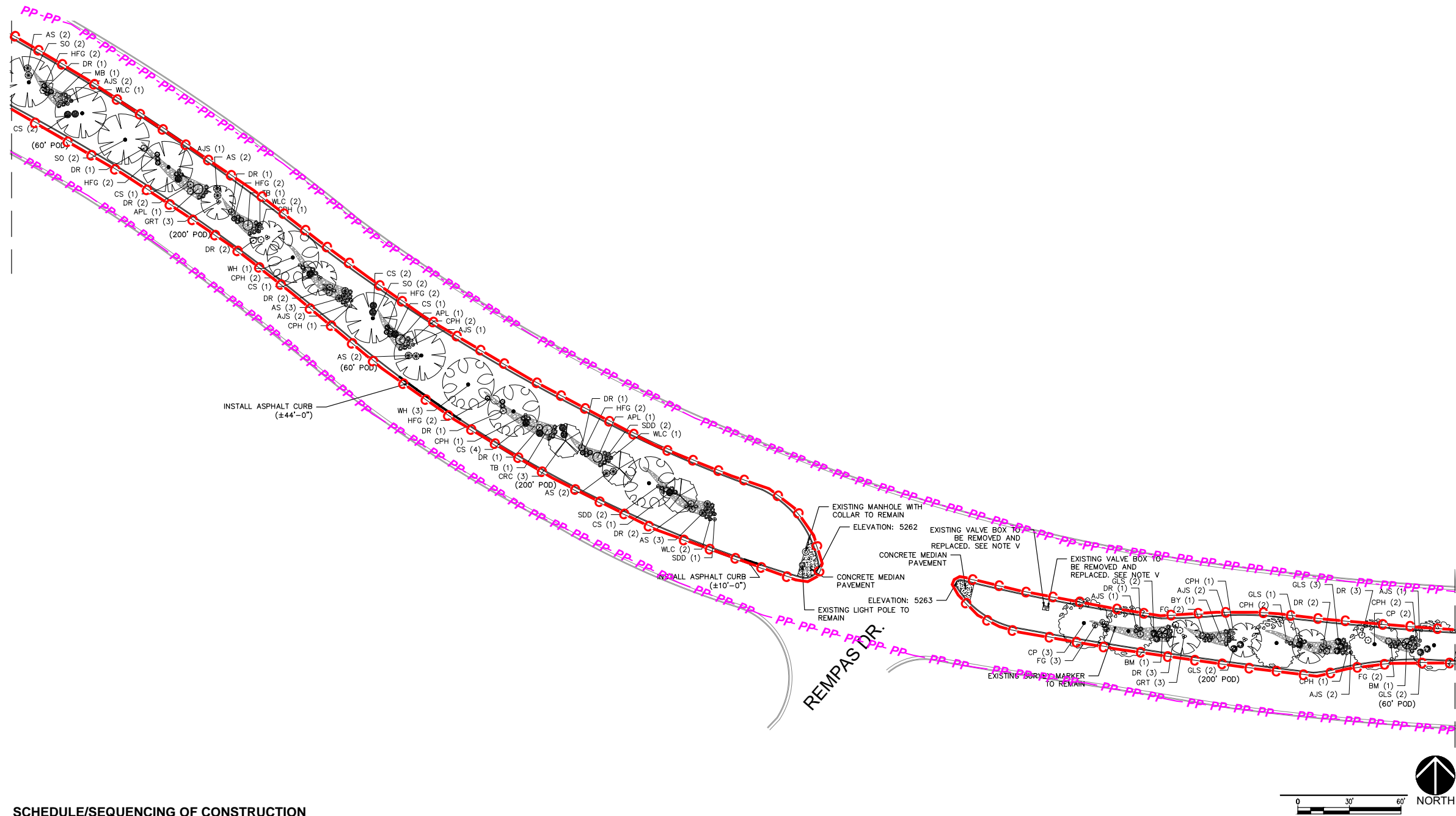
SITE OPERATORS:
OVERALL CONTROL: CITY OF ALBUQUERQUE ANTHONY VILLANUEVA 505-768-4575

DAY TO DAY CONTROL: LEE LANDSCAPES CHUY TREVIZO 505-991-6882

STORMWATER TEAM

- A: REMOVE SEDIMENT FROM ADJACENT STREETS: LEE LANDSCAPES
- B: BMP MAINTENANCE: LEE LANDSCAPES
- C. SITE INSPECTIONS: INSPECTIONS PLUS

 06/02/2021 CPESC Stamp	IRVING MEDIANS LANDSCAPE IMPROVEMENTS PROJECT TITLE	
	ALBUQUERQUE, NM, BERNALILLO COUNTY CITY, COUNTY, STATE	
	06/02/2021 DATE	 INSPECTIONS PLUS
	C. DURKIN DRAWN BY	





SCHEDULE/SEQUENCING OF CONSTRUCTION

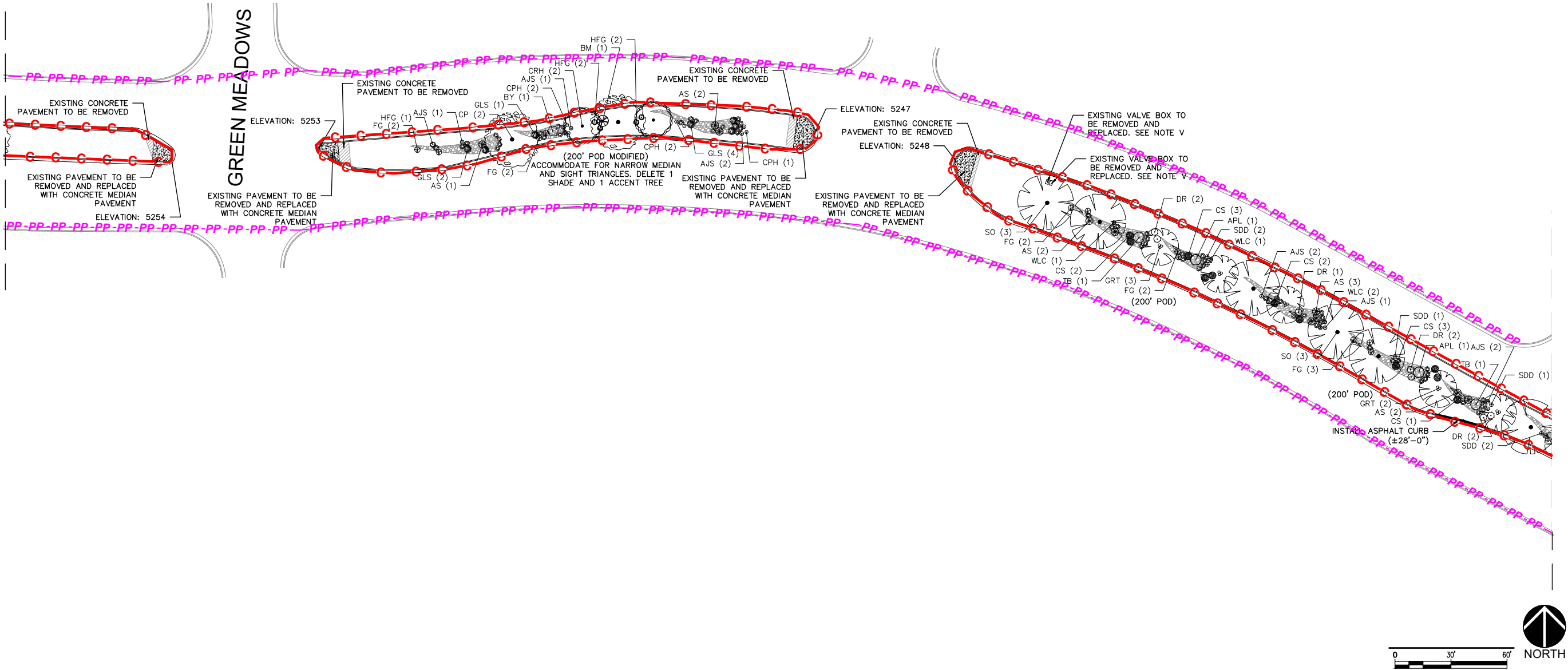
- 1. POST PERMITS
- 2. INSTALL REQUIRED BMPs
 - 2.a. PERIMETER CONTROLS
- 3. LANDSCAPE IMPROVEMENTS
- 4. MATERIAL DISPOSAL OFFSITE
- 5. PUNCH LIST

SITE OPERATORS:
OVERALL CONTROL: CITY OF ALBUQUERQUE ANTHONY VILLANUEVA 505-768-4575
DAY TO DAY CONTROL: LEE LANDSCAPES CHUY TREVIZO 505-991-6882

STORMWATER TEAM

- A: REMOVE SEDIMENT FROM ADJACENT STREETS: LEE LANDSCAPES
- B: BMP MAINTENANCE: LEE LANDSCAPES
- C. SITE INSPECTIONS: INSPECTIONS PLUS

<div><p>06/02/2021 CPESC Stamp</p></div>	IRVING MEDIANS LANDSCAPE IMPROVEMENTS		PROJECT TITLE
	ALBUQUERQUE, NM, BERNALILLO COUNTY		CITY, COUNTY, STATE
	06/02/2021	DATE	 INSPECTIONS PLUS
	C. DURKIN	DRAWN BY	



SCHEDULE/SEQUENCING OF CONSTRUCTION



- 1. POST PERMITS
- 2. INSTALL REQUIRED BMPs
 - 2.a. PERIMETER CONTROLS
- 3. LANDSCAPE IMPROVEMENTS
- 4. MATERIAL DISPOSAL OFFSITE
- 5. PUNCH LIST

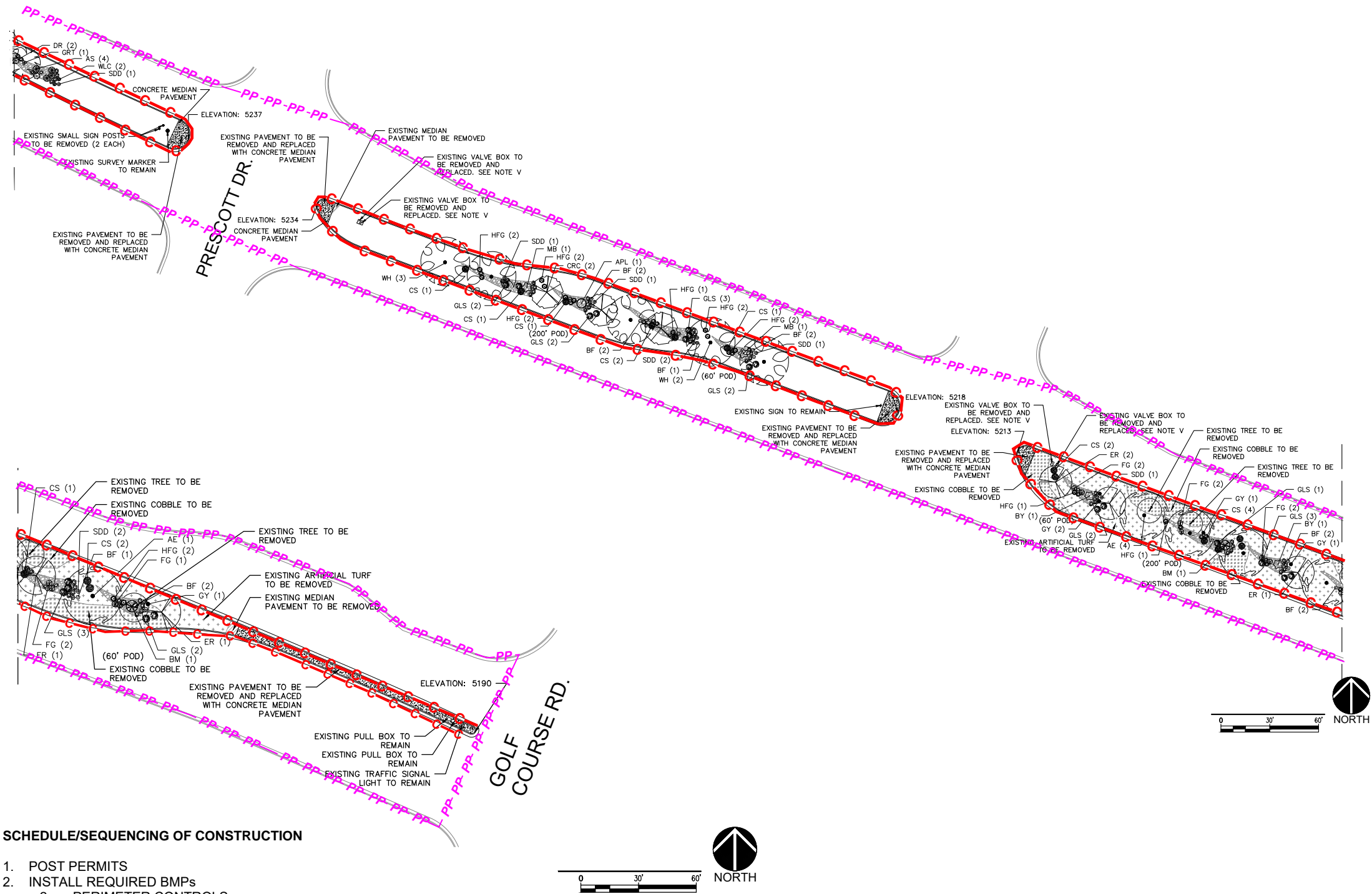
SITE OPERATORS:
OVERALL CONTROL: CITY OF ALBUQUERQUE ANTHONY VILLANUEVA 505-768-4575

DAY TO DAY CONTROL: LEE LANDSCAPES CHUY TREVIZO 505-991-6882

STORMWATER TEAM

- A: REMOVE SEDIMENT FROM ADJACENT STREETS: LEE LANDSCAPES
- B: BMP MAINTENANCE: LEE LANDSCAPES
- C. SITE INSPECTIONS: INSPECTIONS PLUS

<div><p>06/02/2021 CPESC Stamp</p></div>	IRVING MEDIANS LANDSCAPE IMPROVEMENTS <small>PROJECT TITLE</small>	
	ALBUQUERQUE, NM, BERNALILLO COUNTY <small>CITY, COUNTY, STATE</small>	
	06/02/2021 <small>DATE</small>	
	C. DURKIN <small>DRAWN BY</small>	





SCHEDULE/SEQUENCING OF CONSTRUCTION

1. POST PERMITS
2. INSTALL REQUIRED BMPs
 - 2.a. PERIMETER CONTROLS
3. LANDSCAPE IMPROVEMENTS
4. MATERIAL DISPOSAL OFFSITE
5. PUNCH LIST

SITE OPERATORS:
OVERALL CONTROL: CITY OF ALBUQUERQUE ANTHONY VILLANUEVA 505-768-4575
DAY TO DAY CONTROL: LEE LANDSCAPES CHUY TREVIZO 505-991-6882

STORMWATER TEAM
A: REMOVE SEDIMENT FROM ADJACENT STREETS: LEE LANDSCAPES
B: BMP MAINTENANCE: LEE LANDSCAPES
C. SITE INSPECTIONS: INSPECTIONS PLUS

 06/02/2021 CPESC Stamp	IRVING MEDIANS LANDSCAPE IMPROVEMENTS <div>PROJECT TITLE</div>	
	ALBUQUERQUE, NM, BERNALILLO COUNTY <div>CITY, COUNTY, STATE</div>	
	06/02/2021 <div>DATE</div>	 INSPECTIONS PLUS
	C. DURKIN <div>DRAWN BY</div>	