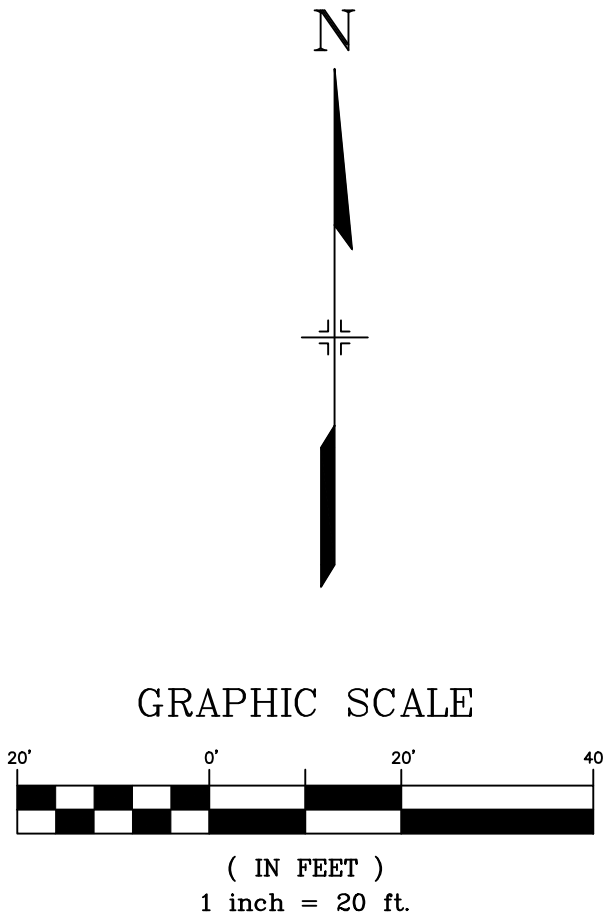
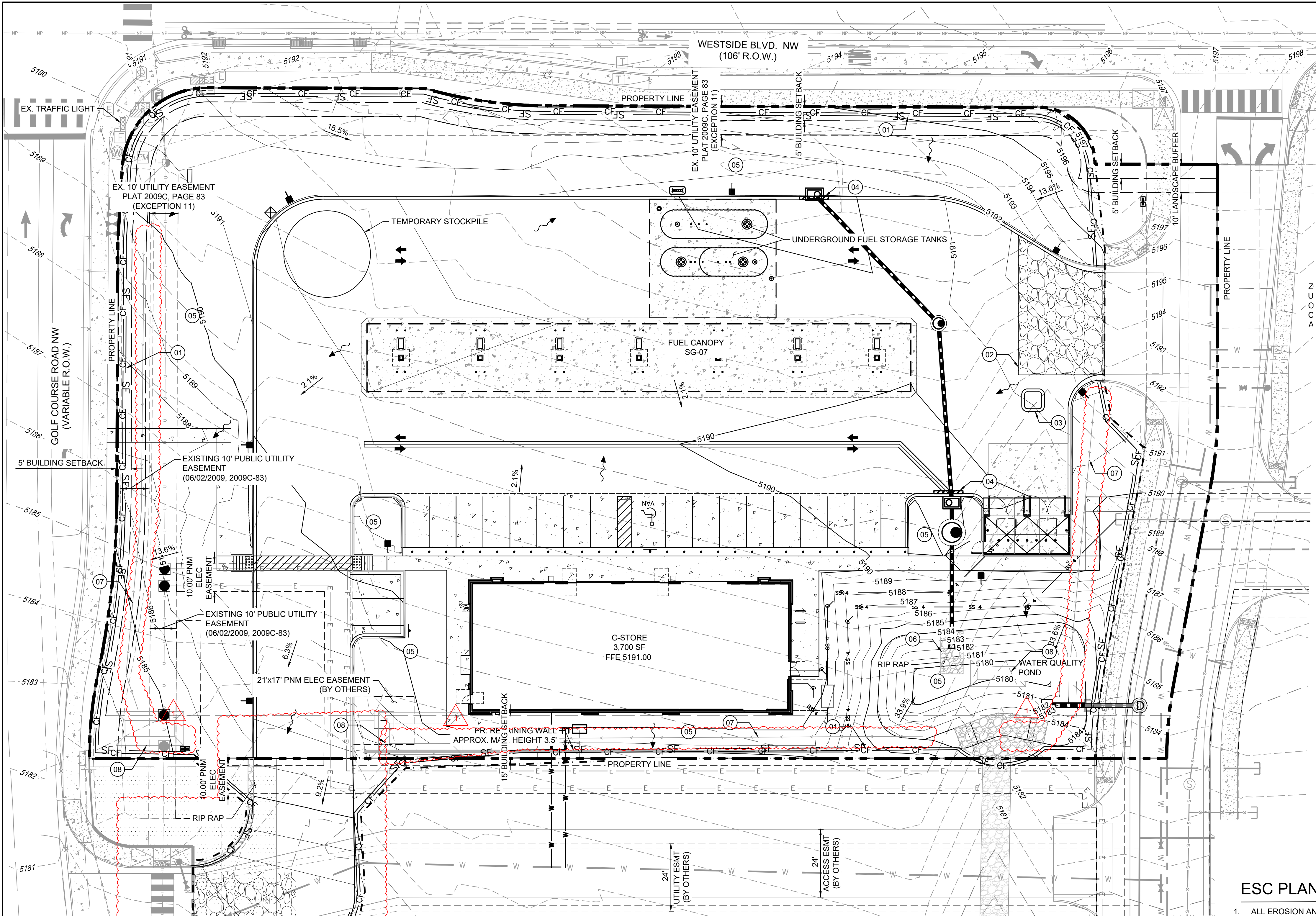


DATE: MARCH 2025



FILE LOCATION: S:\CIRCLE K\GOLF COURSE & WEST SIDE\100 DWG\104 PLAN SET\EROSION CONTROL PLAN\ESC01.DWG



### MAINTENANCE

- PERIMETER CONTROLS (PER CGP 2.2.3)
  - REMOVE SEDIMENT BEFORE IT HAS ACCUMULATED TO ONE-HALF OF THE ABOVE-GROUND HEIGHT OF ANY PERIMETER; AND
  - AFTER A STORM EVENT, IF THERE IS EVIDENCE OF STORMWATER CIRCUMVENTING OR UNDERCUTTING THE PERIMETER CONTROL, EXTEND CONTROLS AND/OR REPAIR UNDERCUT AREAS TO FIX THE PROBLEM.
- CONSTRUCTION ENTRANCE (PER 2.2.4)
  - IMPLEMENT ADDITIONAL TRACK-OUT CONTROLS AS NECESSARY TO ENSURE THAT SEDIMENT REMOVAL OCCURS PRIOR TO VEHICLE EXIT; AND
  - WHERE SEDIMENT HAS BEEN TRACKED-OUT FROM YOUR SITE ONTO PAVED ROADS, SIDEWALKS, OR OTHER PAVED AREAS OUTSIDE OF YOUR SITE, REMOVE THE DEPOSITED SEDIMENT BY THE END OF THE SAME BUSINESS DAY IN WHICH THE TRACK-OUT OCCURS OR BY THE END OF THE NEXT BUSINESS DAY IF TRACK-OUT OCCURS ON A NON-BUSINESS DAY. REMOVE THE TRACK-OUT BY SWEEPING, SHOVELING, OR VACUUMING THESE SURFACES, OR BY USING OTHER SIMILARLY EFFECTIVE MEANS OF SEDIMENT REMOVAL. YOU ARE PROHIBITED FROM HOSING OR SWEEPING TRACKED-OUT SEDIMENT INTO ANY CONSTRUCTED OR NATURAL SITE DRAINAGE FEATURE, STORM DRAIN INLET, OR RECEIVING WATER.
- INLET PROTECTION (PER CGP 2.2.10)
  - CLEAN, OR REMOVE AND REPLACE, THE INLET PROTECTION MEASURES AS SEDIMENT ACCUMULATES, THE FILTER BECOMES CLOGGED, AND/OR PERFORMANCE IS COMPROMISED. WHERE THERE IS EVIDENCE OF SEDIMENT ACCUMULATION ADJACENT TO THE INLET PROTECTION MEASURE, REMOVE THE DEPOSITED SEDIMENT BY THE END OF THE SAME BUSINESS DAY IN WHICH IT IS FOUND OR BY THE END OF THE FOLLOWING BUSINESS DAY IF REMOVAL BY THE SAME BUSINESS DAY IS NOT FEASIBLE.

### EROSION CONTROL DETAILS

- 01 TEMPORARY SILT FENCE (REF DETAIL SHEET 3)
- 02 OFFSITE TRACKING PREVENTION (REF DETAIL SHEET 3)
- 03 TEMPORARY CONCRETE WASHOUT AREA (REF DETAIL SHEET 3)
- 04 IP-1 BLOCK & ROCK SOCK SUMP OR ON GRADE INLET PROTECTION (REF DETAIL SHEET 3)
- 05 PERMANENT STABILIZATION (REF FINAL LANDSCAPE PLAN SHEET)
- 06 CULVERT PROTECTION (REF DETAIL SHEET 3)
- 07 TEMPORARY DIVERSION SWALE (REF DETAIL SHEET 4)
- 08 TEMPORARY SEDIMENT TRAP (REF DETAIL SHEET 4)

### ESC PLAN STANDARD NOTES

- ALL EROSION AND SEDIMENT CONTROL (ESC) WORK ON THESE PLANS, EXCEPT AS OTHERWISE STATED OR PROVIDED HEREON SHALL BE PERMITTED, CONSTRUCTED, INSPECTED, AND MAINTAINED IN ACCORDANCE WITH:
  - THE CITY ORDINANCE 14-5-2-11, THE ESC ORDINANCE;
  - THE EPA'S 2022 CONSTRUCTION GENERAL PERMIT (CGP), AND
  - THE CITY OF ALBUQUERQUE CONSTRUCTION BMP MANUAL.
- ALL BMP'S MUST BE INSTALLED PRIOR TO BEGINNING ANY EARTH MOVING ACTIVITIES EXCEPT AS SPECIFIED HEREON IN THE PHASING PLAN. CONSTRUCTION OF EARTHEN BMP'S SUCH AS SEDIMENT TRAPS, SEDIMENT BASINS, AND DIVERSION BERMS SHALL BE COMPLETED AND INSPECTED PRIOR TO ANY OTHER CONSTRUCTION OR EARTHWORK. SELF-INSPECTION IS REQUIRED AFTER INSTALLATION OF THE BMP'S AND PRIOR TO BEGINNING CONSTRUCTION.
- SELF-INSPECTIONS - AT A MINIMUM A ROUTING SELF-INSPECTION IS REQUIRED TO REVIEW THE PROJECT FOR COMPLIANCE WITH THE CONSTRUCTION GENERAL PERMIT ONCE EVERY 14 DAYS AND AFTER ANY PRECIPITATION EVENT OF 1/4 INCH OR GREATER UNTIL THE SITE CONSTRUCTION HAS BEEN COMPLETED AND THE SITE DETERMINED AS STABILIZED BY THE CITY. REPORTS OF THESE INSPECTIONS SHALL BE KEPT BY THE PERSON OR ENTITY AUTHORIZED TO DIRECT THE CONSTRUCTION ACTIVITIES ON THE SITE AND MADE AVAILABLE UPON REQUEST.
- CORRECTIVE ACTION REPORTS MUST BE KEPT BY THE PERSON OR ENTITY AUTHORIZED TO DIRECT THE CONSTRUCTION ACTIVITIES ON THE SITE AND MADE AVAILABLE UPON REQUEST.
- THE PROPERTY OWNER MUST CONTINUE PERMIT COVERAGE, SELF-INSPECTIONS, SWPPP AND BMP MAINTENANCE UNTIL THE CITY DETERMINES THAT THE FINAL STABILIZATION CRITERIA CGP2.2.14.C HAS BEEN SATISFIED. THEN THE PROPERTY OWNER MUST REMOVE THE BMP'S AND SEND DOCUMENTATION OF THE FINAL STABILIZATION TO THE EPA WITH A NOTICE OF TERMINATION (NOT) PER CGP 8.2 TO END YOUR COVERAGE UNDER THE CGP.
- WHEN DOING WORK IN THE CITY RIGHT-OF-WAY (E.G. SIDEWALK, DRIVE PADS, UTILITIES, ETC.) PREVENT DIRT FROM GETTING INTO THE STREET. IF DIRT IS PRESENT IN THE STREET, THE STREET SHOULD BE SWEEPED DAILY OR PRIOR TO A RAIN EVENT OR CONTRACTOR INDUCED WATER EVENT (E.G. CURB CUT OR WATER TEST).
- WHEN INSTALLING UTILITIES BEHIND THE CURB, THE EXCAVATED DIRT SHOULD NOT BE PLACED IN THE STREET.
- WHEN CUTTING THE STREET FOR UTILITIES THE DIRT SHALL BE PLACED ON THE UPHILL SIDE OF THE STREET CUT AND THE AREA SWEEPED AFTER THE WORK IS COMPLETE. A WATTLE OR MULCH SOCK MAY BE PLACED AT THE TOE OF THE EXCAVATED DIRT PILE IF SITE CONSTRAINTS DO NOT ALLOW PLACING THE EXCAVATED DIRT ON THE UPHILL SIDE OF THE STREET CUT.
- ESC PLANS MUST SHOW LONGITUDINAL STREET SLOPE AND STREET NAMES. ON STREETS WHERE THE LONGITUDINAL SLOPE IS STEEPER THAN 2.5%, WATTLES/MULCH SOCKS OF J-HOOK SILT FENCE SHALL BE SHOWN IN THE FRONT YARD SWALE OR ON THE SIDE OF THE STREET.

### NATURE OF CONSTRUCTION ACTIVITIES

- BRIEF DESCRIPTION: PROPOSED GAS STATION WITH CONVENIENCE STORE, PAVED PARKING AND DRIVE AISLES, AND STORMWATER QUALITY POND.
- PROPERTY SIZE: 2.03 ACRES
- EXPECTED DISTURBED AREA: 1.90 ACRES
- CONSTRUCTION ACTIVITY COVERED BY CGP: INSTALLATION OF EROSION CONTROL MEASURES AS SHOWN ON THIS PLAN.
- MAXIMUM AREA EXPECTED TO BE DISTURBED AT ONE TIME: 1.90 ACRES
- PROJECTED SCHEDULE
  - INSTALL STABILIZED CONSTRUCTION ENTRANCES (FEB 2024)
  - PREPARE TEMPORARY PARKING AND STORAGE AREA (FEB 2024)
  - INSTALL SILT FENCE AND CONSTRUCTION FENCE (FEB 2024)
  - CLEAR AND GRUB THE SITE (FEB 2024)
  - BEGIN GRADING THE SITE (FEB 2024)
  - BEGIN CONSTRUCTION OF BUILDING PAD AND STRUCTURES (JULY 2024)
  - INSTALL UTILITIES, CURB AND GUTTER (SEP 2024)
  - PREPARE SITE FOR PAVING (DEC 2024)
  - PAVE SITE (DEC 2024)
  - COMPLETE GRADING AND INSTALL PERMANENT SEEDING AND PLANTING (RE: LANDSCAPE PLAN) (JAN 2025)
  - REMOVE ALL TEMPORARY EROSION AND SEDIMENT CONTROL DEVICES ONCE SITE IS STABILIZED (FEB 2025)

### SOIL INFORMATION

SOIL NAME: BLUEPOINT LOAMY FINE SAND, 1 TO 9 PERCENT SLOPES (PER WEB SOIL SURVEY)  
SOIL TYPE: HYDROLOGIC SOIL TYPE A (PER WEB SOIL SURVEY)  
PARTICLE SIZES: SAND SOILS WITH VARYING AMOUNTS OF CLAY, SILT AND GRAVEL.  
(PER GEOTECHNICAL ENGINEERING REPORT BY TERRACON DATED 1/25/2021)

### PROPOSED LEGEND

- PROPERTY LINE
- LIMITS OF DISTURBANCE (82850± SF / 1.90± AC)
- SF SF TEMPORARY SILT CONTROL FENCE
- CF CF TEMPORARY CONSTRUCTION FENCE
- TEMPORARY DIVERSION SWALE
- SURFACE FLOW DIRECTION
- OFFSITE TRACKING PREVENTION
- TEMPORARY CONCRETE WASHOUT AREA
- ROCK SOCK
- SEDIMENT TRAP

### LEGAL DESCRIPTION

TRACT D-1, PARADISE HEIGHTS, UNIT I, ALBUQUERQUE, BERNALILLO COUNTY, NEW MEXICO, AS SHOWN ON THE PLAT OF TRACTS D-1, E-1 AND AMAFCA BLACK ARROYO CHANNEL ROW, PARADISE HEIGHTS, UNIT I, ALBUQUERQUE, NEW MEXICO, FILED IN THE OFFICE OF THE COUNTY CLERK OF BERNALILLO COUNTY, NEW MEXICO, ON JUNE 2, 2009, IN PLAT BOOK 2009C, PAGE 83, AS DOCUMENT NO. 2009081460.



**Matrix**  
Excellence by Design  
2435 RESEARCH PARKWAY, SUITE  
300 COLORADO SPRINGS, CO 80920  
PHONE: (719) 575-0100  
FAX : (719) 575-0208

**LAND DEVELOPMENT**  
CONSULTANTS, LLC  
950 S. CHERRY STREET, SUITE 512  
DENVER, CO 80246  
OWNER/DEVELOPER:



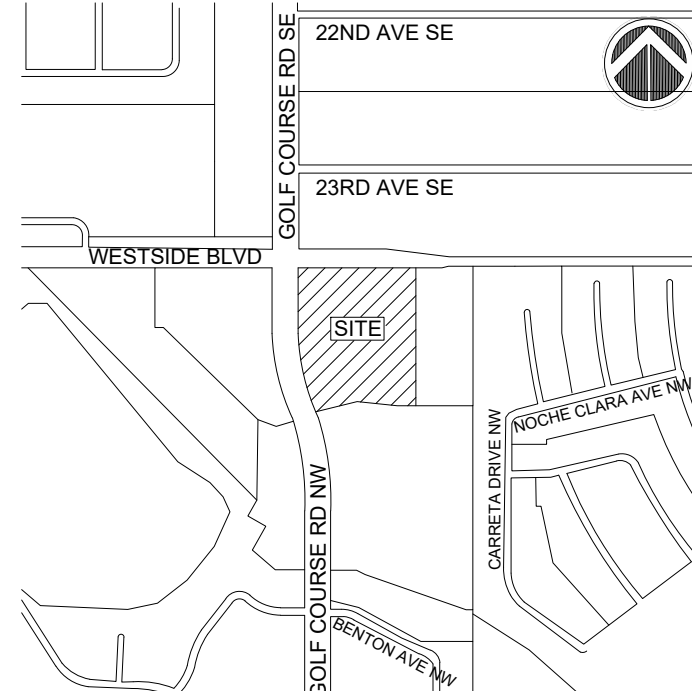
ROCKY MOUNTAINS DIVISION  
5500 S QUEBEC STREET, SUITE 100  
GREENWOOD VILLAGE, CO 80111

SEAL



FOR AND ON BEHALF OF MATRIX DESIGN GROUP, INC.  
CONTRACTOR IS RESPONSIBLE FOR OBTAINING THE  
MOST RECENT PROJECT CONSTRUCTION DOCUMENTS.  
MATRIX DESIGN GROUP IS NOT RESPONSIBLE FOR  
CHANGES, ALTERATIONS, OR USE OF CONSTRUCTION  
DOCUMENTS PRIOR TO JURISDICTIONAL APPROVAL.

VICINITY MAP: N.T.S.



PROJECT:

**CIRCLE K STORES INC**

### EROSION CONTROL PLANS

10850 GOLF COURSE RD  
ALBUQUERQUE, NM 87114

REVISION HISTORY:

NO.	DATE	DESCRIPTION	BY
1	2/11/2025	TEMPORARY ACCESS DRIVE & SWALE/SEDIMENT TRAP ADDITION	RAD

DRAWING INFORMATION:

PROJECT NO: 21.1207.044

DRAWN BY: KGI

CHECKED BY: NMS

SHEET TITLE:

## FINAL EROSION CONTROL PLANS

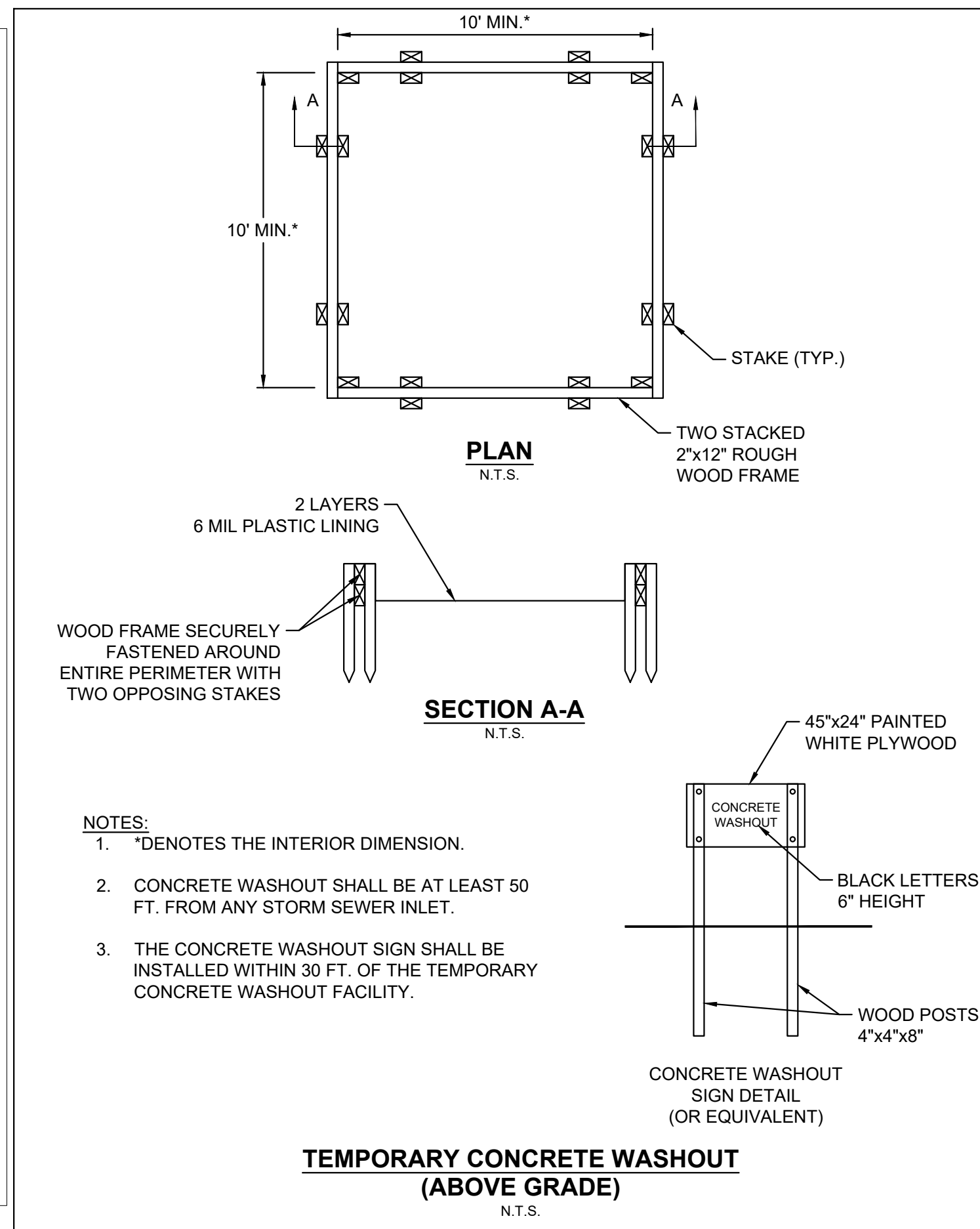
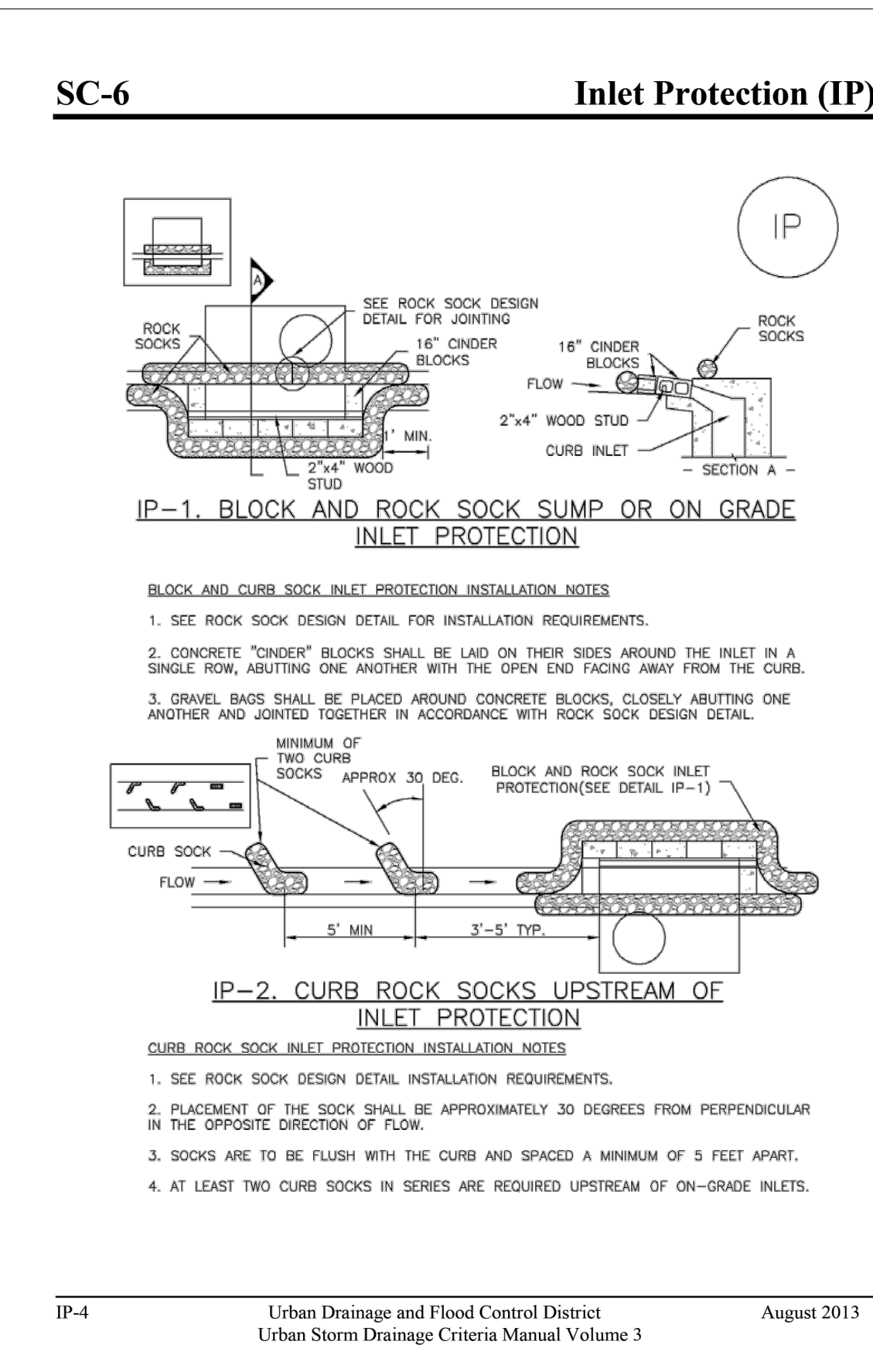
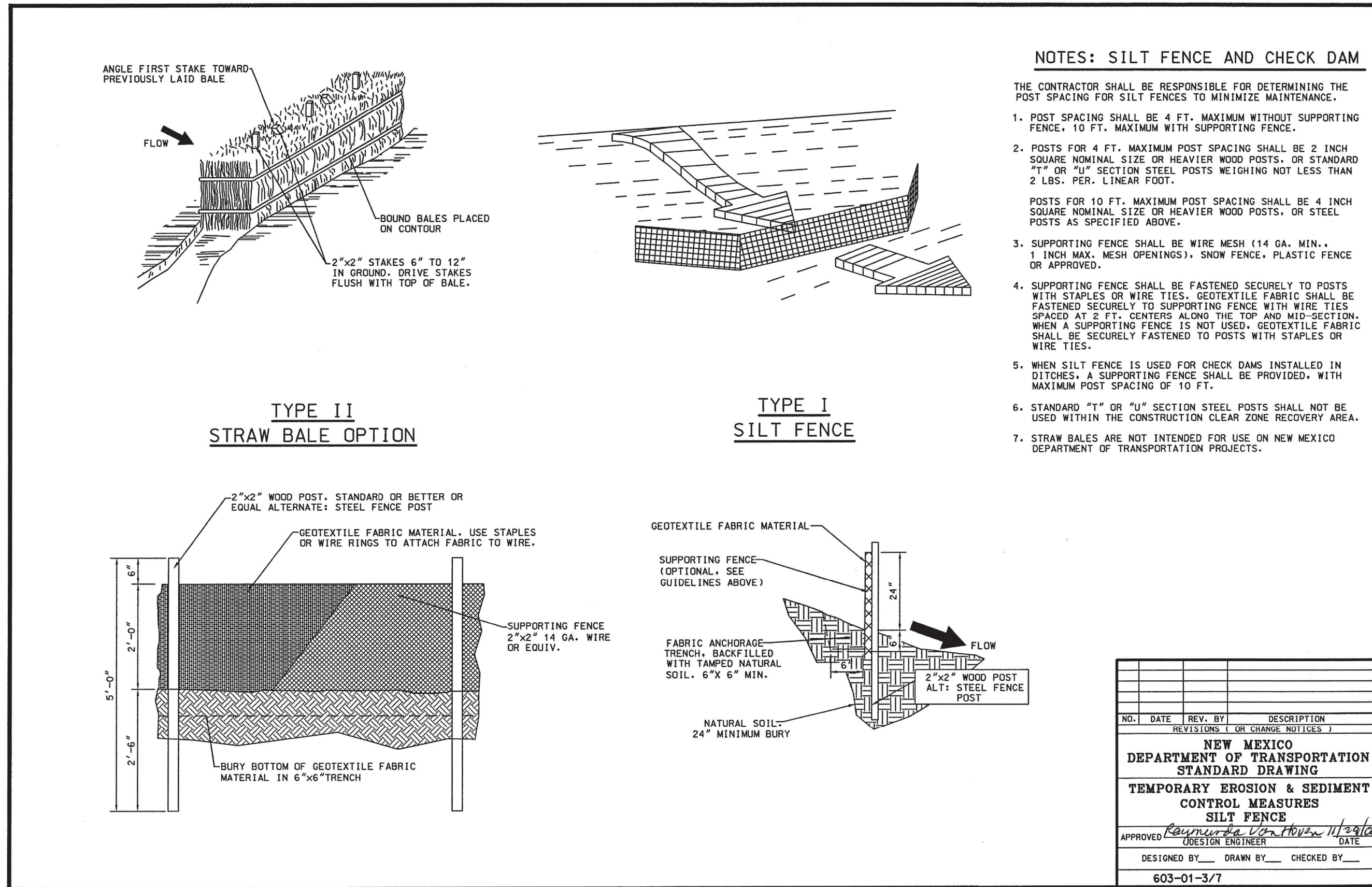
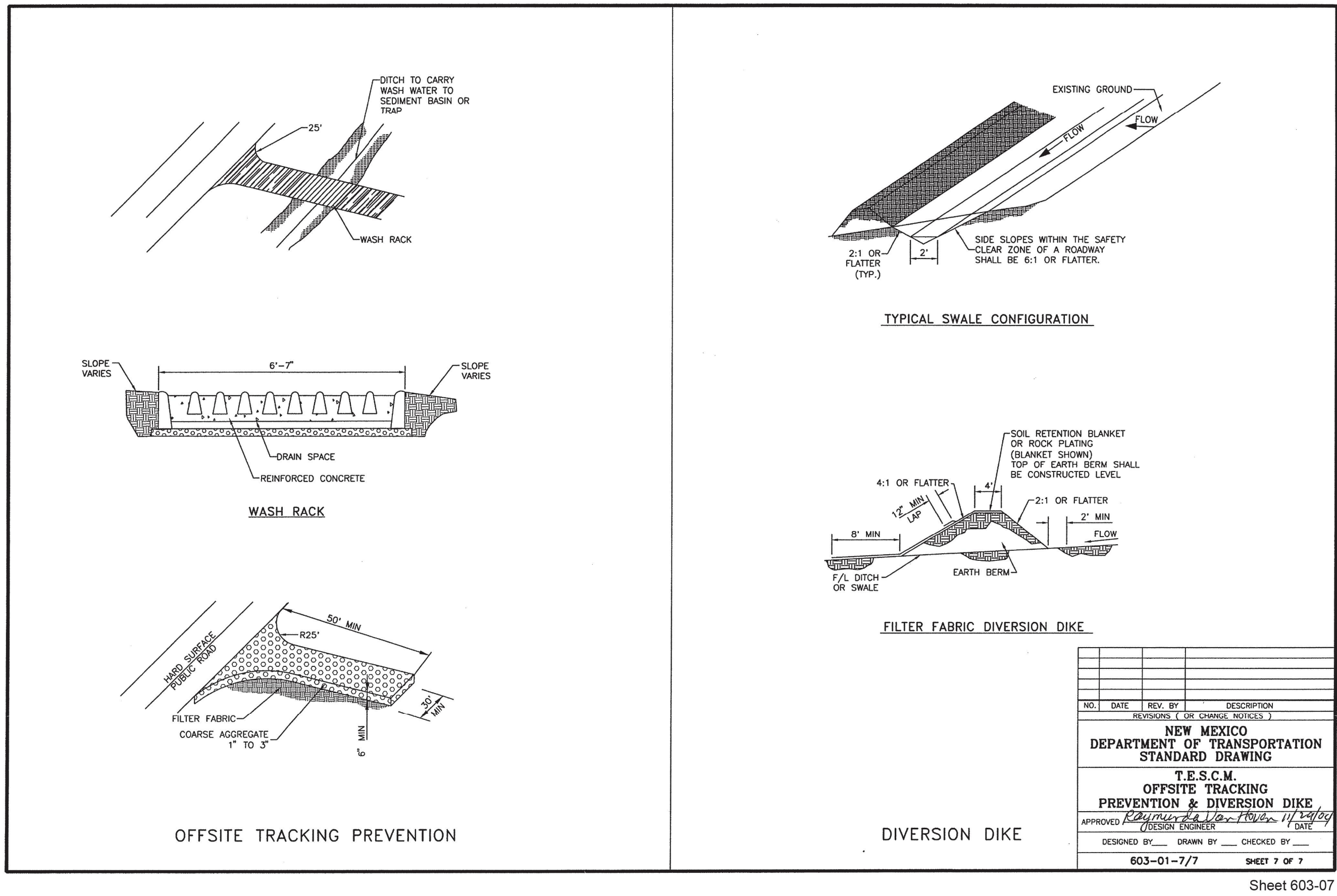
EC02

SHEET 2 OF 4

DATE: MARCH 2025



FILE LOCATION: S:\CIRCLE K\GOLF COURSE & WEST SIDE\100 DWG\104 PLAN SET\EROSION CONTROL PLANS\ECN03.DWG



Know what's below.  
Call before you dig.

CONSULTANTS:

**Matrix**  
Excellence by Design  
2435 RESEARCH PARKWAY, SUITE  
300 COLORADO SPRINGS, CO 80920  
PHONE: (719) 575-0100  
FAX: (719) 575-0208

**LAND DEVELOPMENT**  
CONSULTANTS, LLC  
950 S. CHERRY STREET, SUITE 512  
DENVER, CO 80246  
OWNER/DEVELOPER:



ROCKY MOUNTAINS DIVISION  
5500 S QUEBEC STREET, SUITE 100  
GREENWOOD VILLAGE, CO 80111

SEAL



FOR AND ON BEHALF OF MATRIX DESIGN GROUP, INC.  
CONTRACTOR IS RESPONSIBLE FOR OBTAINING THE  
MOST RECENT PROJECT CONSTRUCTION DOCUMENTS.  
MATRIX DESIGN GROUP IS NOT RESPONSIBLE FOR  
CHANGES, ALTERATIONS, OR USE OF CONSTRUCTION  
DOCUMENTS PRIOR TO JURISDICTIONAL APPROVAL.

VICINITY MAP: N.T.S.



PROJECT:  
**CIRCLE K STORES INC**  
**EROSION CONTROL PLANS**  
10850 GOLF COURSE RD  
ALBUQUERQUE, NM 87114

REVISION HISTORY:			
NO.	DATE	DESCRIPTION	BY

DRAWING INFORMATION:  
PROJECT NO: 21.1207.044  
DRAWN BY: KGI  
CHECKED BY: NMS

SHEET TITLE:

**EROSION  
CONTROL  
DETAILS**

**ECN03**

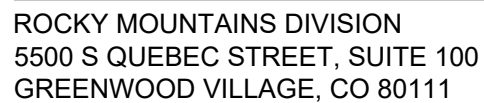
**SHEET 3 OF 4**

DATE: MARCH 2025





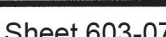
OWNER/DEVELOPER



NO.	DATE	DESCRIPTION	BY

# EROSION CONTROL DETAILS

DATE: MARCH 2025



**EQUATION 6.3**  $V_{\text{gross}} = V_{\text{net}} + A_{\text{p}} * (P_{\text{gross}} - P_{\text{net}}) / 12 \text{ in./ft}$

Partial		500 year		100 year		10 year		2 year	
Duration		Depth (in)		Intensity in/hr		Depth (in)		Intensity in/hr	
		Depth (in)	Intensity in/hr	Depth (in)	Intensity in/hr	Depth (in)	Intensity in/hr	Depth (in)	Intensity in/hr
ZONE 1									
5	min.	0.701	8.41	0.538	6.46	0.335	4.02	0.207	2.48
10	min.	1.070	6.42	0.819	4.91	0.511	3.07	0.315	1.79
12	min.	-	5.96	-	4.58	-	2.85	-	1.86
15	min.	1.320	5.28	1.020	4.08	0.633	2.53	0.390	1.56
30	min.	1.780	3.56	1.370	2.74	0.852	1.70	0.525	1.05
60	min.	2.200	2.20	1.690	1.69	1.060	1.06	0.650	0.65
3	hr.	2.530	1.27	1.920	0.96	1.190	0.60	0.746	0.37
2	hr.	2.760	0.92	2.000	0.67	1.250	0.42	0.800	0.27
6	hr.	2.780	0.46	2.170	0.36	1.400	0.23	0.920	0.15
24	hr.	3.090	0.13	2.490	0.10	1.680	0.07	1.160	0.05

SEDIMENT TRAP SUMMARY				
TRAP NO.	AREA (AC)	REQ'D VOLUME (CF)	PROVIDED VOLUME (CF)	TRAP DIMENSIONS (LxWxD)
ST-1	0.50	670	726	22"x11"x3'
ST-2	1.09	2,177	2,312	34"x17"x4'
ST-3	0.43	578	600	20"x10"x3

1. SEDIMENT BASIN METHODOLOGY IS PER THE CITY OF ALBUQUERQUE DEVELOPMENT PROCESS MANUAL ARTICLE 6-2 "DRAINAGE, FLOOD CONTROL, AND EROSION CONTROL", SPECIFICALLY TABLE 6.2.8, TABLE 6.2.13, AND EQUATION 6.3.

$$V_{1440} = (203cf) + [(18,731sf)(1.16in - .92in) / 12in/ft] = \mathbf{578cf}$$