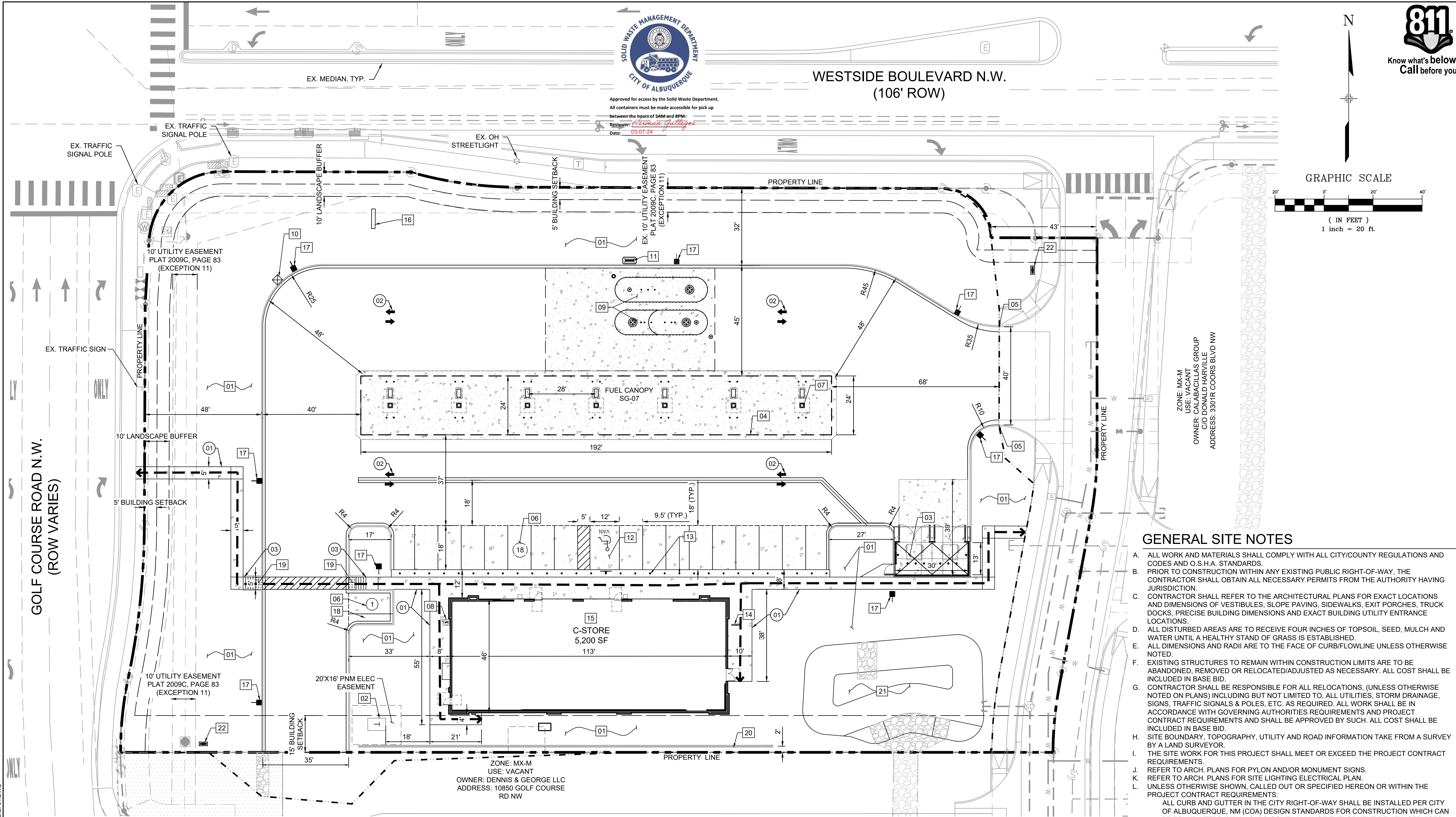



FILE LOCATION: S:\CIRCLE K\GOLF COURSE & WEST SIDE\100 DWG\104 PLAN SETS\CONSTRUCTION PLANS\SP01.DWG




CONSULTANTS:



Matrix
Excellence by Design


2435 RESEARCH PARKWAY, SUITE 300
COLORADO SPRINGS, CO 80920
PHONE: (719) 575-0100
FAX : (719) 575-0208



LAND DEVELOPMENT
CONSULTANTS, LLC


950 S. CHERRY STREET, SUITE 512
DENVER, CO 80246

OWNER/DEVELOPER:




ROCKY MOUNTAINS DIVISION
5500 S QUEBEC STREET, SUITE 100
GREENWOOD VILLAGE, CO 80111

SEAL



FOR AND ON BEHALF OF MATRIX DESIGN GROUP, INC.
CONTRACTOR IS RESPONSIBLE FOR OBTAINING THE MOST RECENT PROJECT CONSTRUCTION DOCUMENTS.
MATRIX DESIGN GROUP IS NOT RESPONSIBLE FOR CHANGES, ALTERATIONS, OR USE OF CONSTRUCTION DOCUMENTS PRIOR TO JURISDICTIONAL APPROVAL.

VICINITY MAP: N.T.S.



PROJECT:

CIRCLE K STORES INC

CONSTRUCTION DOCUMENTS

CIRCLE K

10850 GOLF COURSE RD
ALBUQUERQUE, NM 87114

REVISION HISTORY:

NO.	DATE	DESCRIPTION	BY

DRAWING INFORMATION:

PROJECT NO: 21.1207.044

DRAWN BY: JAW

CHECKED BY: NMS

SHEET TITLE:

SITE PLAN

SP01

SHEET 5 OF 22

DATE: MARCH 2024

SITE NOTES

01

LANDSCAPE AREA (PER LANDSCAPE PLANS)

02

TRANSFORMER PAD (PER ELEC CO AND / OR ARCH PLANS)

03

TRASH ENCLOSURE (PER ARCH PLANS)

04

OVERHEAD CANOPY (TYP PER ARCH PLANS)

05

TAPER CURB TO MATCH EXISTING CURB

06

PROPOSED PARKING SPACES

07

FUEL PUMPS (PER ARCH PLANS)

08

CO2 ENCLOSURE (PER ARCH PLANS)

09

UNDERGROUND FUEL TANKS (PER ARCH PLANS)

10

AIR & VACUUM UNIT (PER ARCH PLANS)

11

VENT PIPES (PER ARCH PLANS)

12

ACCESSIBLE PARKING STALL, ISA SYMBOL AND SIGNAGE (PER ARCH PLANS)

13

PIPE BOLLARDS (PER ARCH PLANS)

14

BICYCLE RACKS (EACH UNIT ACCOMMODATES 2 BICYCLES) (CYCLE-SAFE "U-RACK" OR APPROVED EQUAL)

15

CONVENIENCE STORE (5,200 SF)

16

MONUMENT SIGN

17

PROPOSED LIGHT POLE

18

MOTORCYCLE PARKING SPACE, "MC" PAVEMENT MARKING, AND SIGNAGE (REF ARCH PLANS)

19

2' WIDE DETECTABLE WARNING MEETING COA REQUIREMENTS (REF DETAIL 2446, SHEET 16)

20

RETAINING WALL

21

STORMWATER QUALITY POND

22

DIRECTIONAL SIGNS

LEGAL DESCRIPTION

TRACT D-1, PARADISE HEIGHTS, UNIT I, ALBUQUERQUE, BERNALILLO COUNTY, NEW MEXICO, AS SHOWN ON THE PLAT OF TRACTS D-1, E-1 AND AMAFCA BLACK ARROYO CHANNEL ROW, PARADISE HEIGHTS, UNIT I, ALBUQUERQUE, NEW MEXICO, FILED IN THE OFFICE OF THE COUNTY CLERK OF BERNALILLO COUNTY, NEW MEXICO, ON JUNE 2, 2009, IN PLAT BOOK 2009C, PAGE 83, AS DOCUMENT NO. 2009061460;

SITE DETAILS

- 01

CONCRETE SIDEWALK (REF COA DETAILS, SHEET 15)
- 02

TRAFFIC FLOW ARROW (REF SHEET 17)
- 03

PEDESTRIAN RAMP PER COA DRAWINGS (REF DETAIL COA 2440, SHEET 15 & COA DETAIL 2443, SHEET 16)

PROPOSED LEGEND

- PROPERTY LINE
- =====

6" MEDIAN CONCRETE CURB & GUTTER (CATCH)
- =====

6" DEPRESSED MEDIAN CONCRETE CURB & GUTTER (SPILL)
- PROPOSED PARKING SPACES
- ADA ACCESSIBLE PEDESTRIAN PATHWAY

ADA COMPLIANCE NOTE

ALL EXISTING AND PROPOSED SIDEWALKS, BARRIER-FREERAMPS, HANDICAP PARKING, DRIVEWAY CROSSWALKS, DRIVEWAYS AND ACCESSIBLE ROUTES SHALL COMPLY WITH A.D.A. AND CITY OF ALBUQUERQUE REQUIREMENTS. EXISTING INFRASTRUCTURE NOT COMPLYING SHALL BE REMOVED AND REPLACED TO MEET STANDARDS.

GENERAL SITE NOTES

- A.

ALL WORK AND MATERIALS SHALL COMPLY WITH ALL CITY/COUNTY REGULATIONS AND CODES AND O.S.H.A. STANDARDS.
- B.

PRIOR TO CONSTRUCTION WITHIN ANY EXISTING PUBLIC RIGHT-OF-WAY, THE CONTRACTOR SHALL OBTAIN ALL NECESSARY PERMITS FROM THE AUTHORITY HAVING JURISDICTION.
- C.

CONTRACTOR SHALL REFER TO THE ARCHITECTURAL PLANS FOR EXACT LOCATIONS AND DIMENSIONS OF VESTIBULES, SLOPE PAVING, SIDEWALKS, EXIT PORCHES, TRUCK DOCKS, PRECISE BUILDING DIMENSIONS AND EXACT BUILDING UTILITY ENTRANCE LOCATIONS.
- D.

ALL DISTURBED AREAS ARE TO RECEIVE FOUR INCHES OF TOPSOIL, SEED, MULCH AND WATER UNTIL A HEALTHY STAND OF GRASS IS ESTABLISHED.
- E.

ALL DIMENSIONS AND RADII ARE TO THE FACE OF CURB/FLOWLINE UNLESS OTHERWISE NOTED.
- F.

EXISTING STRUCTURES TO REMAIN WITHIN CONSTRUCTION LIMITS ARE TO BE ABANDONED, REMOVED OR RELOCATED/ADJUSTED AS NECESSARY. ALL COST SHALL BE INCLUDED IN BASE BID.
- G.

CONTRACTOR SHALL BE RESPONSIBLE FOR ALL RELOCATIONS, (UNLESS OTHERWISE NOTED ON PLANS) INCLUDING BUT NOT LIMITED TO, ALL UTILITIES, STORM DRAINAGE, SIGNS, TRAFFIC SIGNALS & POLES, ETC. AS REQUIRED. ALL WORK SHALL BE IN ACCORDANCE WITH GOVERNING AUTHORITIES REQUIREMENTS AND PROJECT CONTRACT REQUIREMENTS AND SHALL BE APPROVED BY SUCH. ALL COST SHALL BE INCLUDED IN BASE BID.
- H.

SITE BOUNDARY, TOPOGRAPHY, UTILITY AND ROAD INFORMATION TAKE FROM A SURVEY BY A LAND SURVEYOR.
- I.

THE SITE WORK FOR THIS PROJECT SHALL MEET OR EXCEED THE PROJECT CONTRACT REQUIREMENTS.
- J.

REFER TO ARCH. PLANS FOR PYLON AND/OR MONUMENT SIGNS.
- K.

REFER TO ARCH. PLANS FOR SITE LIGHTING ELECTRICAL PLAN.
- L.

UNLESS OTHERWISE SHOWN, CALLED OUT OR SPECIFIED HEREON OR WITHIN THE PROJECT CONTRACT REQUIREMENTS.

M.

ALL CURB AND GUTTER IN THE CITY RIGHT-OF-WAY SHALL BE INSTALLED PER CITY OF ALBUQUERQUE, NM (COA) DESIGN STANDARDS FOR CONSTRUCTION WHICH CAN BE FOUND [HTTPS://WWW.CABQ.GOV/PLANNING/DEVELOPMENT-REVIEW-SERVICES/DESIGN-REVIEW-CONSTRUCTION-FORMS](https://www.cabq.gov/planning/development-review-services/design-review-construction-forms)

N.

ALL HANDICAP ACCESSIBLE STALLS SHALL BE MARKED WITH THE INTERNATIONAL SYMBOL OF ACCESSIBILITY AND A WARNING THAT VEHICLES IN VIOLATION OF THE LOCAL MUNICIPAL CODE SHALL BE TOWED AWAY. THE INTERNATIONAL SYMBOL AND TOW-AWAY WARNING SHALL BE POSTED CONSPICUOUSLY ON SEVEN-FOOT POLES.

O.

MAXIMUM SLOPE IN ACCESSIBLE PARKING AREAS SHALL NOT EXCEED 2% IN ANY DIRECTION.

P.

ANY FACILITIES THAT ARE TO REMAIN AND ARE DAMAGED BY THE CONTRACTOR AS A RESULT OF CONSTRUCTION, SHALL BE REPLACED PER CURRENT PROJECT CONTRACT REQUIREMENTS AT THE SOLE EXPENSE OF THE CONTRACTOR.

Q.

ALL EXISTING AND PROPOSED SIDEWALKS, BARRIER FREE RAMPS, HANDICAP PARKING, DRIVEWAY CROSSWALKS, DRIVEWAYS AND ACCESSIBLE ROUTES SHALL COMPLY WITH A.D.A. AND CITY OF ALBUQUERQUE REQUIREMENTS. EXISTING INFRASTRUCTURE NOT COMPLYING SHALL BE REMOVED AND REPLACED TO MEET STANDARDS.

R.

ALL IMPROVEMENTS LOCATED IN THE RIGHT OF WAY MUST BE INCLUDED ON THE WORK ORDER.

S.

LANDSCAPING AND SIGNAGE WILL NOT INTERFERE WITH CLEAR SIGHT REQUIREMENTS. THEREFORE, SIGNS, WALLS, TREES, AND SHRUBBERY BETWEEN 3 AND 8 FEET TALL (AS MEASURED FROM THE GUTTER PAN) WILL NOT BE ACCEPTABLE IN THE CLEAR SIGHT TRIANGLE.