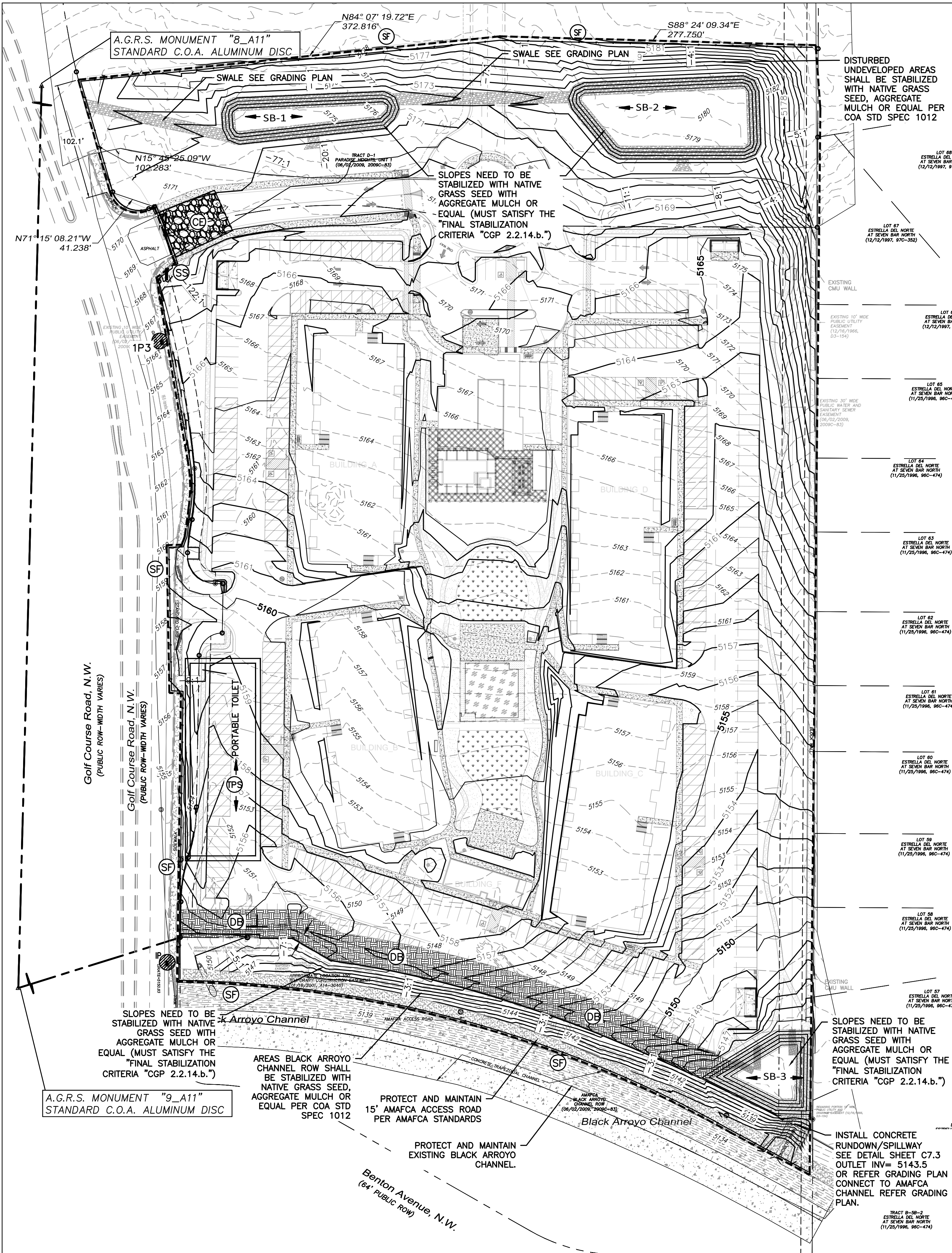


\\TMS\512\Draw\2020\202013 Apartments of Golf Course Rd\DWG\202013\_SWPPP.dwg, Dec 14, 2021 -- 3:28pm



PROPOSED	
---	BOUNDARY LINE
---	LIMITS OF DISTURBANCE
---	CONTOUR ELEVATIONS
---	EXISTING CONTOURS
---	PROPOSED CONTOURS

EROSION DETAILS	
CE	TEMPORARY STONE CONSTRUCTION EXIT
SF	TEMPORARY SILT FENCE
ST	TEMPORARY SEDIMENT TRAP
IP	INLET PROTECTION
SB	TEMPORARY SEDIMENT BASIN
SS	SWPPP SIGN
DB	TEMPORARY DIVERSION BERM — DETAIL SHEET C7.3 ONSITE STORM WATER TO DRAIN TO SB-3

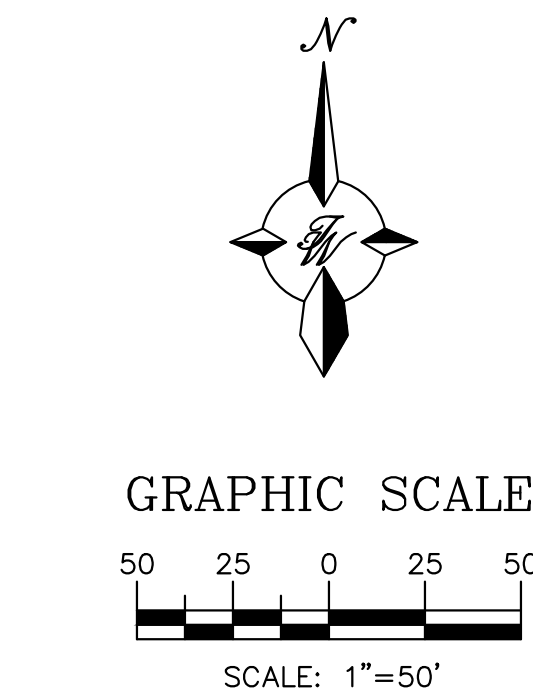
EROSION NOTES	
TPS	TEMPORARY PARKING AND STORAGE

**OPERATOR:**

OPERATOR 1 NAME: ABO LAND LLC  
PHONE: 651-245-7222  
EMAIL: peterstalland@hotmail.com

OPERATOR 2 NAME: CALABACILLAS GROUP C/O DONALD HARVILLE  
PHONE: 505-345-1524  
EMAIL: john@johnyoungblood.com

OPERATOR 3 NAME: SNYDER CONSTRUCTION LLC  
PHONE: 505-923-3181  
EMAIL: zsnyder@snyder-const.com

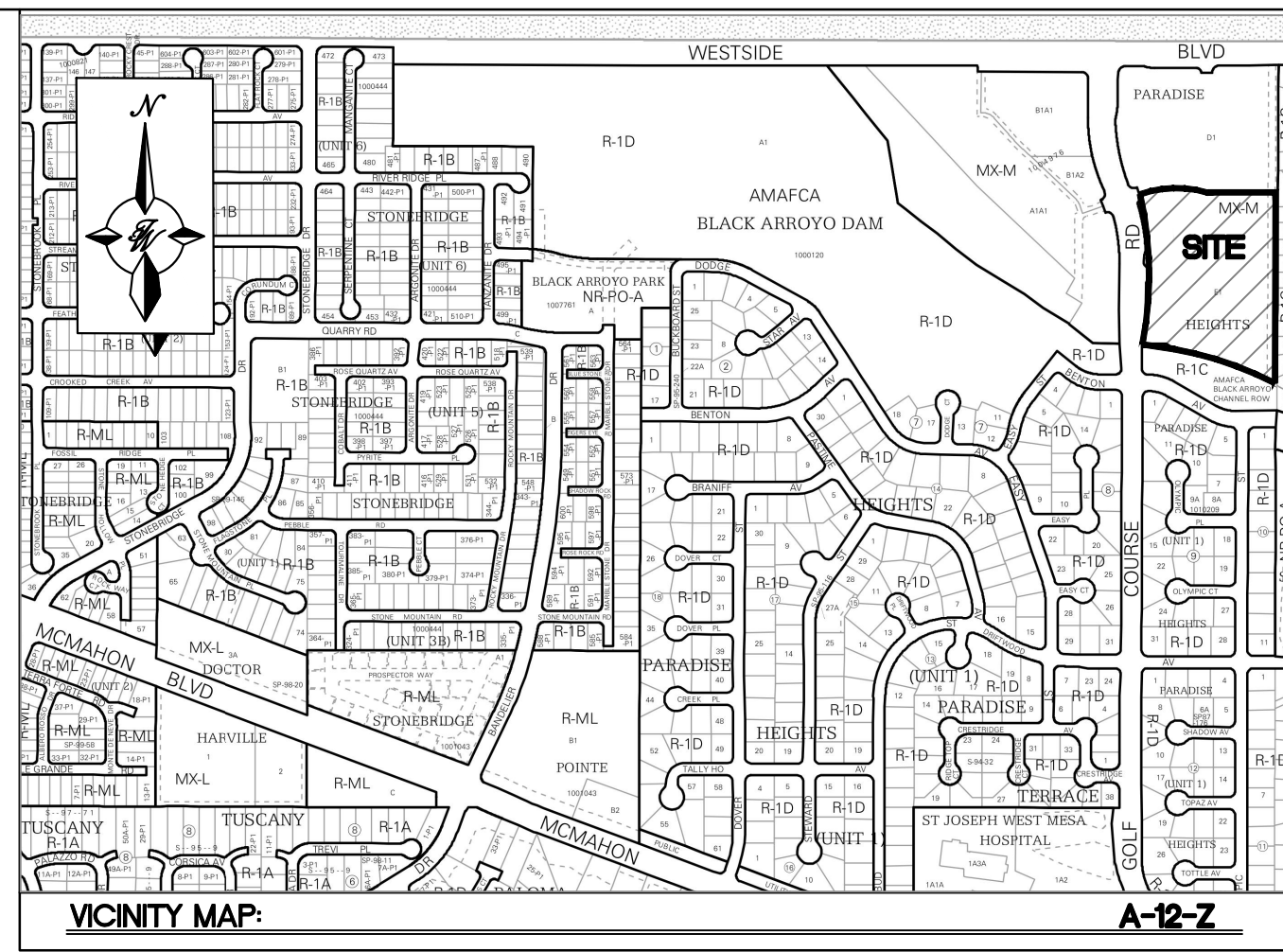


- SEQUENCE OF CONSTRUCTION**
1. INSTALL STABILIZED CONSTRUCTION ENTRANCES.
  2. POST PUBLIC NOTICE PER DETAIL.
  3. INSTALL DOWN GRADIENT PERIMETER CONTROLS.
  4. INSTALL SEDIMENT CONTROLS AT INLETS AND DRAINAGE STRUCTURES.
  5. INSTALL SEDIMENT TRAP BASINS INCLUDING EMERGENCY OVERFLOW.
  6. NOTIFY SWPPP COMPLIANCE INSPECTOR OF COMPLETION OF THE ABOVE.
  7. BEGIN GRUBBING AND SOIL DISTURBING ACTIVITIES.
  8. PROVIDE POSITIVE GRADES TOWARDS SEDIMENT PONDS DURING SITE GRADING.
  9. INSTALL INTERMEDIATE CONTROLS OF STEEP SLOPES.
  10. PROVIDE TEMPORARY STABILIZATION OF DISTURBED AREAS OR STOCKPILES.
  11. START CONSTRUCTION OF BUILDING PAD AND STRUCTURES.
  12. FINISH GRADING THE SITE.
  13. COMPLETE SITE FINAL STABILIZATION

Interim Conditions												
Basin Descriptions					Treatment A				Treatment B			
					%	(acres)	%	(acres)	%	(acres)	%	(acres)
SB-1	D-1	151,954	3.49	0.00545	100%	3.488	0%	0.000	0%	0.000	0%	0.000
SB-2	D-1	151,954	3.49	0.00545	100%	3.488	0%	0.000	0%	0.000	0%	0.000
SB-3	E-1	435,600	10.00	0.01563	0%	0.000	0%	0.000	100%	10.000	0%	0.000
Total		739,508	16.98	0.02653		6.977		0.000		10.000		0.000

Soil Information (Web Soil Survey (WSS))						
Dept (in)	Name Type	Particle Size (% Passing Sieve Number)				Erodibility Factor
		4	10	40	200	
0-5	Loamy fine sand (SM)	92	91	87	31	0.2
5-28	Loamy fine sand, loamy sand, fine sand (SM)	92	92	87	32	0.2
	Loamy fine sand, loamy sand, fine sand (SM)	92	92	87	32	0.2
53-60	Loamy fine sand, loamy sand, fine sand (SM)	92	92	72	26	0.2
	Loamy fine sand, loamy sand, fine sand (SM)	92	92	72	26	0.2
IN GENERAL, THE TEST HOLES ENCOUNTERED FINE TO MEDIUM GRAINED, SLIGHTLY MOIST TO MEDIUM MOIST, SILTY SAND (SM) AND SLIGHTLY SILTY SAND (SP-SM). THIN LAYERS OF CLAY (CL) WERE ENCOUNTERED BENEATH A DEPTH OF TEN FEET IN SOME OF THE TEST HOLES. THE SOILS WERE LOOSE TO DENSE IN THE UPPER FIVE FEET AND MEDIUM DENSE TO DENSE BENEATH, AS MEASURED BY SPT. GROUNDWATER WAS NOT ENCOUNTERED IN THE TEST HOLES TO THE MAXIMUM DEPTH OF EXPLORATION, APPROXIMATELY TWENTY-TWO FEET. ON-SITE SOILS APPEAR SUITABLE FOR REUSE AS ENGINEERED FILL PROVIDED; THEY ARE BLENDED TO A HOMOGENEOUS MIXTURE PRIOR TO USE. SPECIFICATIONS ARE FOUND IN THE GEOTECH REPORT BY EARTHWORKS ENGINEERING GROUP LLC DATED MAY 10, 2021.						

SB-3Pond Volume Calculation	
Area at Mid Depth	2,815 Sq. Ft.
Depth of Pond	4 Ft.
Total Volume	11,258 Cubic Ft.



**VICINITY MAP:** A-12-Z

**LEGAL DESCRIPTION:**  
TRACT E-1, AMAFCA BLACK ARROYO CHANNEL ROW, PARADISE HEIGHTS, UNIT 1

**STORMWATER TEAM MEMBERS:**

SEDIMENT REMOVAL NAME: GARY CHRISTENSEN  
PHONE: 505-720-8475  
EMAIL: GCHRISTENSEN@SNYDER-CONST.COM

BMP MAINTENANCE NAME: SAME AS ABOVE  
PHONE: TBD  
EMAIL: TBD

INSPECTIONS NAME: INSPECTION PLUS  
PHONE: 505-344-9410  
EMAIL: JEFF HART @ JEFF@INSPECTIONPLUS.COM

**NATURE AND EXTENT OF CONSTRUCTION ACTIVITIES:**

**NATURE OF CONSTRUCTION ACTIVITIES:** ROUGH/FINE GRADING OF THE SITE, INSTALLATION OF PRIVATE UTILITIES (WATER, SANITARY, & STORM), PAVING OF ONSITE PARKING, CURB, AND SIDEWALKS, AND CONSTRUCTION OF BUILDING AREAS.

**PROPERTY SIZE:** 9.0 ACRES

**DISTURBED AREA SIZE:** 10.0 ACRES

**DESCRIPTION OF CONSTRUCTION SUPPORT ACTIVITIES:** EQUIPMENT STAGING YARD, MATERIALS STORAGE AREA, EXCAVATED MATERIALS DISPOSAL/STORAGE AREAS.

**MAXIMUM DISTURBED AREA SIZE:** 10.0 ACRES

**GROUND COVER (PRE-CONSTRUCTION):**

THE UNDISTURBED AND PRE-CONSTRUCTION GROUND COVER CONSISTS OF UNCOMPACTED SOIL WITH NATIVE GRASSES, WEEDS, AND SHRUBS WITH MINIMAL TO NO DISTURBANCES TO GRADING.

	ENGINEER'S SEAL	WINTERGREEN LUXURY APARTMENTS 10800 GOLF COURSE RD. NW	DRAWN BY RG
		ESC PLAN	DATE 12/14/2021
		TIERRA WEST, LLC 5571 MIDWAY PARK PLACE NE ALBUQUERQUE, NM 87109 (505) 858-3100 www.tierrawestllc.com	SHEET # C7.1
			JOB # 2020013



\\TWA\SVC\Draw\2020\20200103\_SWP\PP.dwg, Dec. 14, 2021 -- 3:30pm  
\\TWA\SVC\Draw\2020\20200103\_Apartments of Golf Course\_Ro\dwg\0101\20200103\_SWP\PP.dwg, Dec. 14, 2021 -- 3:30pm

ESC PLAN STANDARD NOTES:

- ALL EROSION AND SEDIMENT CONTROL (ESC WORK) ON THESE PLANS, EXCEPT AS OTHERWISE STATED OR PROVIDED HEREON SHALL BE PERMITTED, CONSTRUCTED, INSPECTED, AND MAINTAINED IN ACCORDANCE WITH:
    - THE CITY ORDINANCE § 14-5-2-11, THE ESC ORDINANCE,
    - THE EPA'S 2017 CONSTRUCTION GENERAL PERMIT (CGP), AND
    - THE CITY OF ALBUQUERQUE CONSTRUCTION BMP MANUAL.
  - ALL BMP'S MUST BE INSTALLED PRIOR TO BEGINNING ANY EARTH MOVING ACTIVITIES EXCEPT AS SPECIFIED HEREON IN THE PHASING PLAN. CONSTRUCTION OF EARTHEN BMP'S SUCH AS SEDIMENT TRAPS, SEDIMENT BASINS, AND DIVERSION BERMS SHALL BE COMPLETED AND INSPECTED PRIOR TO ANY OTHER CONSTRUCTION OR EARTHWORK. SELF-INSPECTION IS REQUIRED AFTER INSTALLATION OF THE BMP'S AND PRIOR TO BEGINNING CONSTRUCTION.
  - SELF-INSPECTIONS -- AT A MINIMUM A ROUTINE COMPLIANCE SELF-INSPECTION IS REQUIRED TO REVIEW THE PROJECT FOR COMPLIANCE WITH THE CONSTRUCTION GENERAL PERMIT ONCE EVERY 14 DAYS AND AFTER ANY PRECIPITATION EVENT OF 1/8 INCH OR GREATER UNTIL THE SITE CONSTRUCTION HAS BEEN COMPLETED AND THE SITE DETERMINED AS STABILIZED BY THE CITY. REPORTS OF THESE INSPECTIONS SHALL BE KEPT BY THE PERSON OR ENTITY AUTHORIZED TO DIRECT THE CONSTRUCTION ACTIVITIES ON THE SITE AND MADE AVAILABLE UPON REQUEST.
  - CORRECTIVE ACTION REPORTS MUST BE KEPT BY THE PERSON OR ENTITY AUTHORIZED TO DIRECT THE CONSTRUCTION ACTIVITIES ON THE SITE AND MADE AVAILABLE UPON REQUEST.
  - STABILIZATION REPORTS MUST BE KEPT BY THE PERSON OR ENTITY AUTHORIZED TO DIRECT THE CONSTRUCTION ACTIVITIES ON THE SITE AND MADE AVAILABLE UPON REQUEST. REPORTS SHOULD INCLUDE RECORDS OF WEED REMOVAL PER CITY ORDINANCE (§ 9-8-1), STERILIZATION, SOIL TEST RESULTS AND RECOMMENDATION, MATERIALS AND MANUFACTURER'S SPECIFICATIONS FOR APPLICATION RATES, ESTIMATED FUNCTIONAL LONGEVITY, METHODS OF APPLICATION, INSPECTION AND MAINTENANCE. THE REDUCED SELF-INSPECTION SCHEDULE IN CGP 4.4.1 APPLIES TO STABILIZED AREA AND ANY DAMAGED OR WORN STABILIZATION MUST BE IDENTIFIED IN THE REPORTS ALONG WITH WEED PROBLEMS. CORRECTIVE ACTIONS FOR STABILIZATION SHALL BE DOCUMENTED IN A STABILIZATION REPORT INCLUDING ACTUAL RATES AND DATES OF STABILIZATION, AND THE MATERIALS AND MANUFACTURER'S SPECIFICATIONS USED.
  - BMP'S SHALL BE INSPECTED AND MAINTAINED UNTIL ALL DISTURBED AREAS ARE STABILIZED IN ACCORDANCE WITH THE FINAL STABILIZATION CRITERIA (CGP 2.2.14.b). GENERALLY, ALL DISTURBED AREAS, OTHER THAN STRUCTURES AND IMPERVIOUS SURFACES, MUST HAVE UNIFORM PERENNIAL VEGETATION THAT PROVIDES 70 PERCENT OR MORE OF THE COVER PROVIDED BY NATIVE VEGETATION OR SEED THE DISTURBED AREA AND PROVIDE NON-VEGETATIVE MULCH THAT PROVIDES COVER AT LEAST THREE YEARS WITHOUT ACTIVE MAINTENANCE. FINAL STABILIZATION MUST BE APPROVED BY THE CITY OF ALBUQUERQUE PRIOR TO REMOVAL OF BMP'S AND DISCONTINUATION OF INSPECTIONS.
- GENERAL EROSION NOTES:
- THE STORMWATER POLLUTION PREVENTION PLAN (SWPPP) IS COMPRISED OF THE SWPPP BOOK, THE 2017 GENERAL CONSTRUCTION PERMIT, THIS DRAWING ("TEMPORARY EROSION CONTROL AND SEDIMENTATION PLAN"), STANDARD DETAILS ("TEMPORARY EROSION CONTROL AND SEDIMENTATION DETAILS"), EPA NOTICE OF INTENT PERMIT AND ALL SUBSEQUENT REPORTS, CORRECTIVE ACTIONS AND EROSION CONTROL RELATED DOCUMENTS.
  - ALL OPERATORS AS DESIGNATED, CONTRACTORS AND SUBCONTRACTORS INVOLVED WITH SITE ACTIVITIES RELATED TO STORM WATER POLLUTION PREVENTION SHALL REVIEW A COPY OF THE STORM WATER POLLUTION PREVENTION PLAN (SWPPP), THE 2017 CONSTRUCTION GENERAL PERMIT, THE NATIONAL POLLUTANT DISCHARGE ELIMINATION SYSTEM (NPDES), THE CLEAN WATER ACT OF 1972 AND BECOME FAMILIAR WITH THEIR CONTENTS.
  - THE OPERATOR IN CONTROL OF DAILY SITE ACTIVITIES SHALL IMPLEMENT BEST MANAGEMENT PRACTICES AS REQUIRED BY THE SWPPP. ADDITIONAL BEST MANAGEMENT PRACTICES SHALL BE IMPLEMENTED AS DICTATED BY CONDITIONS THAT MAY OCCUR AT NO ADDITIONAL COST TO PROJECT OWNER THROUGHOUT ALL PHASES OF CONSTRUCTION.
  - BEST MANAGEMENT PRACTICES (BMP'S) AND CONTROLS SHALL CONFORM TO ALL FEDERAL, STATE, OR LOCAL REQUIREMENTS OR MANUAL OF PRACTICE, AS APPLICABLE. OPERATOR WITH CONTROL OF DAILY SITE ACTIVITIES SHALL IMPLEMENT ADDITIONAL CONTROLS AS DIRECTED BY PERMITTING AGENCY, LOCAL JURISDICTIONAL AUTHORITY OR SWPPP COMPLIANCE INSPECTOR.
  - THE TEMPORARY EROSION CONTROL AND SEDIMENTATION PLAN IS A WORKING DOCUMENT AND IS REQUIRED TO BE UPDATED WITHIN 24 HOURS OF ANY CHANGES WHEN BMP'S ARE REPAIRED, RELOCATED OR REMOVED BY NOTING ON THE PLAN THE AREAS AND DATES OF THE REPAIRS, RELOCATIONS OR REMOVALS. AN ACTIVE COPY OF THE PLAN SHALL BE POSTED IN THE JOB SITE TRAILER ONSITE AND MUST BE MAINTAINED CURRENT AT ALL TIMES.
  - CONTRACTOR SHALL MINIMIZE CLEARING AND EARTH DISTURBANCE TO THE MAXIMUM ACREAGE AS REQUIRED BY THE EPA CONSTRUCTION GENERAL PERMIT.
  - CONTRACTOR SHALL DENOTE ON THIS PLAN, THE LOCATION OF TEMPORARY PARKING, STORAGE, PORTABLE SANITARY FACILITIES, OFFICE TRAILERS, AND ALL SUPPORT AREAS. RELOCATIONS OF EACH SHALL ALSO BE DOCUMENTED AS THEY OCCUR.
  - ALL WASH OUT WATER USED FOR CONCRETE, MASONRY, PAINT AND OTHER MATERIALS SHALL HAVE ADEQUATE SIGNAGE WITH PROPER CONTAINMENT AND DISPOSED OF PROPERLY WHEN CAPACITY REACHES 50% OR PER VENDOR RECOMMENDATIONS. VENDORS AND TRADESMEN SHALL BE INFORMED OF THE REQUIREMENTS TO USE THE WASH OUT.
  - A SPILL KIT SHALL BE READILY AVAILABLE TO CONTAIN AND CLEAN-UP FUEL OR CHEMICAL SPILLS AND LEAKS. A DISCHARGE OF ANY MATERIAL IN A QUANTITY THAT MAY WITHIN REASONABLE PROBABILITY CAUSE INJURY OR BE DETRIMENTAL TO HUMAN HEALTH, ANIMAL OR PLANT LIFE, OR PROPERTY; OR INTERFERE WITH THE PUBLIC WELFARE MUST BE REPORTED TO THE NEW MEXICO ENVIRONMENTAL DEPARTMENT HOTLINE AT (505) 827-9329 FOR EMERGENCIES OR FOR NON EMERGENCIES AT (866)-428-8535.
  - IF UNSURE IF THE SPILL IS OF A SIGNIFICANT QUANTITY, THE SPILL SHOULD BE REPORTED TO THE HOTLINE AND INFORMATION PROVIDED WITH DETAILS OF THE SPILL FOR FURTHER ACTIONS.
  - DUST DURING CONSTRUCTION OPERATIONS SHALL BE FREQUENTLY CONTROLLED BY WATER SUPPRESSION METHODS ONLY. EARTH DISTURBING OPERATIONS SHALL CEASE IF HIGH WINDS ABOVE 35 MPH ARE PRESENT. THE USE OF MOTOR OILS AND OTHER PETROLEUM BASED OR TOXIC LIQUIDS IS STRICTLY PROHIBITED. OTHER CHEMICALS USED FOR DUST SUPPRESSION MUST BE APPROVED BY THE EPA PRIOR TO THEIR USE.
  - RUBBISH, TRASH, GARBAGE, LITTER, OR OTHER SUCH MATERIALS SHALL BE DEPOSITED INTO SEALED, COVERED, LEAK PROOF CONTAINERS. CONTAINERS SHALL BE DISPOSED OF PROPERLY WHEN CAPACITY IS REACHED. MATERIALS SHALL BE PREVENTED FROM LEAVING THE PREMISES THROUGH THE ACTION OF WIND OR STORMWATER.
  - ALL STORM WATER POLLUTION PREVENTION MEASURES AND CONTROLS PRESENTED ON THIS PLAN, AND IN THE STORM WATER POLLUTION PREVENTION PLAN, SHALL BE INITIATED PER THE SEQUENCE OF CONSTRUCTION AS NOTED.
  - DISTURBED PORTIONS OF THE SITE WHERE CONSTRUCTION ACTIVITY HAS BEEN TEMPORARILY SUSPENDED FOR 14 DAYS, SHALL HAVE TEMPORARILY STABILIZATION IN PLACE NO LATER THAN 14 DAYS FROM THE LAST DATE OF CONSTRUCTION ACTIVITY OCCURRING THESE AREAS.
  - TEMPORARY COVER AND FINAL STABILIZATION (PART 2.2.12 (a) AND (b) RESPECTIVELY ARE TO BE PER COA STD SPEC 1012 NATIVE SEED WITH HYDROMULCH AND AGGREGATE MULCH (2-4") RESPECTIVELY.
  - IF THE ACTION OF VEHICLES OR EQUIPMENTS TRAVELING OVER THE CONSTRUCTION ENTRANCES IS NOT SUFFICIENT TO REMOVE THE MAJORITY OF DIRT OR MUD FROM LEAVING THE SITE. THEN THE LENGTH OF THE EXIT SHOULD BE EXTENDED TO PROVIDE ADDITIONAL TIRE ROTATIONS, LARGER ROCK MAY BE USED TO CREATE A SUFFICIENT JARRING MOTION OR INSTALL A TIRE WASH OFF WITH A SEDIMENT TRAP BEFORE LEAVING THE SITE.
  - ALL MATERIALS SPILLED, DROPPED, WASHED, OR TRACKED FROM VEHICLES ONTO ROADWAYS OR INTO STORM DRAINS MUST BE REMOVED IMMEDIATELY.
  - THE OPERATOR IN CHARGE OF THE DAILY SITES ACTIVITIES WILL BE RESPONSIBLE FOR REMOVING SEDIMENT OR SOILS ACCUMULATING MORE THAN 50% OF THE DESIGN CAPACITY IN DETENTION PONDS, SILT FENCING OR OTHER SIMILAR EROSION CONTROLS.
  - ON-SITE & OFFSITE SOIL STOCKPILE AND BORROW AREAS SHALL BE PROTECTED FROM EROSION AND SEDIMENTATION THROUGH IMPLEMENTATION OF BEST MANAGEMENT PRACTICES, AS REQUIRED BY THE CONSTRUCTION GENERAL PERMIT. STOCKPILE AND BORROW AREA LOCATIONS SHALL BE NOTED ON THE ESC PLAN AND PERMITTED IN ACCORDANCE WITH LOCAL AUTHORITIES HAVING JURISDICTIONAL CONTROL.
  - SLOPES SHALL BE LEFT WITH CROSS SLOPE GRADING PATTERN AND IN A ROUGHENED CONDITION DURING THE GRADING PHASE TO REDUCE RUNOFF VELOCITIES AND EROSION RILLS. EXCESSIVE SLOPES MAY REQUIRE ADDITIONAL INDUSTRY STANDARD CONTROLS TO PREVENT EROSION.
  - DUE TO THE GRADE CHANGES DURING THE DEVELOPMENT OF THE PROJECT, THE OPERATOR IN CONTROL OF THE SITE'S DAILY ACTIVITIES SHALL BE RESPONSIBLE FOR ADJUSTING AND MAINTAINING ALL EROSION CONTROL TO PREVENT EROSION.
  - ALL DISTURBED AREAS SHALL BE SUPPRESSED BY WATER AND ALL CONTROLS LEFT IN GOOD WORKING CONDITION AT THE END OF EACH WORKING DAY. THIS INCLUDES REPLACEMENT OF SILT FENCING AND/OR OTHER SURFACE CONTROLS, TRACK OUT SWEEP CLEAN, BACKFILL OF OPEN TRENCHES AND ANY OTHER EROSION CONTROLS.

BMP MAINTENANCE

ALL MEASURES STATED IN THIS EROSION AND SEDIMENT CONTROL PLAN, AND IN THE STORM WATER POLLUTION PREVENTION PLAN, SHALL BE MAINTAINED IN FULLY FUNCTIONAL CONDITION UNTIL NO LONGER REQUIRED FOR A COMPLETED PHASE OF WORK OR UNTIL FINAL STABILIZATION OF THE SITE IS ACHIEVED. ALL EROSION AND SEDIMENTATION CONTROL MEASURES SHALL BE INSPECTED AT THE END OF THE WORKDAY BY A QUALIFIED MEMBER OF THE SWPPP COMPLIANCE TEAM. THE OPERATOR WITH CONTROL OF THE SITES DAILY ACTIVITIES IS RESPONSIBLE TO MAINTAIN, CLEAN AND REPAIR EROSION CONTROLS IN ACCORDANCE WITH THE FOLLOWING:

- INLET PROTECTION DEVICES AND BARRIERS SHALL BE REPAIRED OR REPLACED, IF THEY SHOW SIGNS OF UNDERMINING OR DETERIORATION. SEDIMENT SHALL BE REMOVED TO INSURE PROPER FLOWS. INLET PROTECTION TYPES MAY NEED TO BE MODIFIED DURING THE CONSTRUCTION PROCESS.
- ALL SEEDED AREAS SHALL BE CHECKED REGULARLY TO SEE THAT A GOOD STAND OF VEGETATION IS MAINTAINED. AREAS SHOULD BE FERTILIZED, WATERED, AND RE-SEEDDED AS NEEDED.
- SILT FENCES, WADDLES OR OTHER CONTROLS SHALL BE REPLACED OR REPAIRED TO PROPER FUNCTIONING CONDITION, IF DAMAGED. SEDIMENT AND SOIL SHALL BE REMOVED WHEN REACHES ONE-HALF THE HEIGHT OF THE CONTROL.
- THE CONSTRUCTION EXITS SHALL BE MAINTAINED IN A CONDITION WHICH WILL PREVENT TRACKING OF SEDIMENT ONTO PUBLIC OR PRIVATE ROADWAYS. THIS MAY REQUIRE PERIODIC TOP DRESSING, EXTENDING OR OTHER MODIFICATIONS TO THE CONSTRUCTION EXITS AS CONDITIONS DEMAND. SITE TRAFFIC SHOULD BE LIMITED TO THE CONTROLLED EXITS ONLY.
- SEDIMENTATION BASINS SHALL BE MAINTAINED IN OPERATIONAL CONDITIONS AT ALL TIMES. SEDIMENT SHALL BE REMOVED FROM SEDIMENT BASINS OR TRAPS WHEN THE DESIGN CAPACITY HAS BEEN REDUCED BY 50%.
- REFERENCE THE SWPPP BOOK FOR ALL EROSION CONTROL MAINTENANCE PROCEDURES AND FREQUENCIES. CONSULT THE SWPPP PREPARER WITH ANY QUESTIONS REGARDING THIS SWPPP AND ITS REQUIREMENTS.

EROSION CONTROL NOTES:

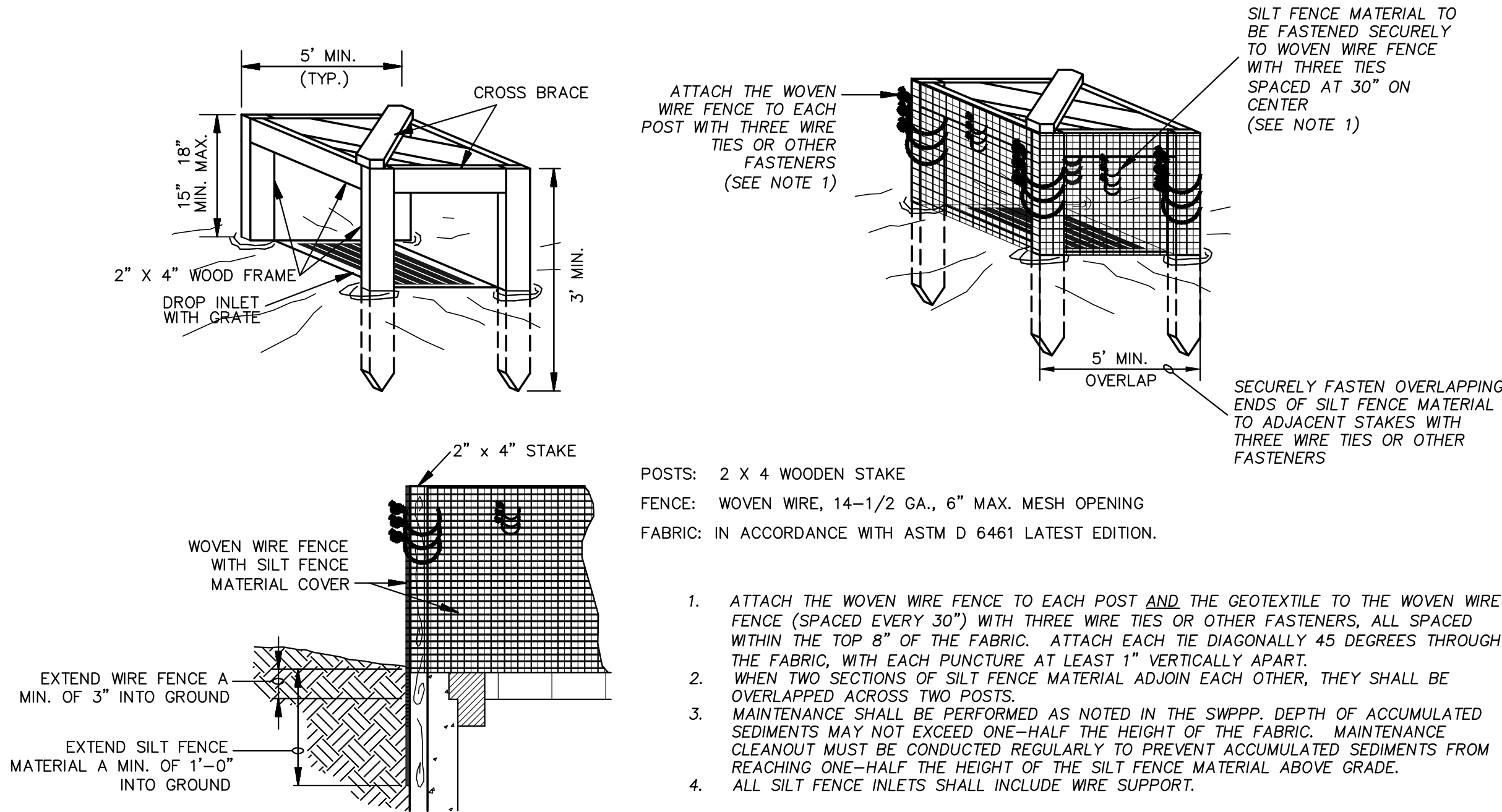
- CONTRACTOR IS RESPONSIBLE FOR OBTAINING A TOPSOIL DISTURBANCE PERMIT FROM THE LOCAL JURISDICTIONAL AUTHORITY PRIOR TO BEGINNING WORK.
- THE OPERATOR WITH CONTROL OF THE DAILY SITES ACTIVITIES IS RESPONSIBLE FOR MAINTAINING RUN-OFF and RUN ON OF SITE DURING CONSTRUCTION.
- THE OPERATOR WITH CONTROL OF THE DAILY SITES ACTIVITIES IS RESPONSIBLE FOR CLEANING ALL SEDIMENT THAT GETS INTO EXISTING RIGHT-OF-WAY, REPAIR OF DAMAGED FACILITIES AND CLEANUP OF SEDIMENT ACCUMULATIONS ON ADJACENT PROPERTIES AND IN PUBLIC FACILITIES IS THE RESPONSIBILITY OF THE CONTRACTOR.
- ALL EXPOSED EARTH SURFACES MUST HAVE APPROPRIATE CONTROLS TO PROTECT FROM WIND AND WATER EROSION DURING ALL PHASES OF THE PROJECT.
- STOCKPILES INACTIVE FOR 14 DAYS ARE REQUIRED TO HAVE TEMPORARY STABILIZATION OR APPROPRIATE COVER TO CONTROL WIND AND WATER EROSION.
- THE OPERATOR WITH CONTROL OF THE DAILY SITES ACTIVITIES IS REQUIRED TO MAINTAIN ALL SITE BMP'S IN GOOD CONDITION FOR THE DURATION OF THE PROJECT UNTIL A NOTICE OF TERMINATION IS ACCEPTED BY THE EPA.
- IF SITE EARTH DISTURBANCES EXCEED 5 ACRES AT ANY ONE TIME, TEMPORARY AND/OR PERMANENT STABILIZATION MUST BE COMPLETED WITHIN 7 DAYS WHEN AREA BECOMES INACTIVE OR EARTH DISTURBING ACTIVITIES ARE COMPLETE. SITE EARTH DISTURBANCES OF LESS THAN 5 ACRES, HAVE 14 DAYS TO PROVIDE TEMPORARY OR PERMANENT STABILIZATION WHEN AREA BECOMES INACTIVE OR EARTH DISTURBING ACTIVITIES ARE COMPLETE.

GENERAL NOTES:

- PROVIDE POSITIVE DRAINAGE TOWARDS SEDIMENT TRAPS DURING GRADING OPERATIONS.
- INSTALL WATTLES ALONG LINEAR CONSTRUCTION OF SD
- PROVIDE POSITIVE DRAINAGE TO TEMPORARY SEDIMENT BASIN DURING ALL GRADING ACTIVITIES
- OFFSITE GRADING AND ROADWAY IMPROVEMENTS ARE TO BE COMPLETED BY OTHERS. COORDINATION OF OFFSITE BMP'S WITH PROPOSED ONSITE BMP'S SHALL BE REQUIRED BY THE CONTRACTOR(S)

<div>ENGINEER'S SEAL</div> <div><div>RONALD R. BOHANNAN NEW MEXICO PROFESSIONAL ENGINEER 7868 12/14/2021</div></div> <div>RONALD R. BOHANNAN P.E. #7868</div>	WINTERGREEN LUXURY APARTMENTS 10800 GOLF COURSE RD. NW	DRAWN BY RG
	ESC NOTES	DATE 12/14/2021
		2020013_SWPPP
	<div> <b>TIERRA WEST, LLC</b> 5571 MIDWAY PARK PLACE NE ALBUQUERQUE, NM 87109 (505) 858-3100 www.tierrawestllc.com</div>	SHEET # <b>C7.2</b> JOB # 2020013

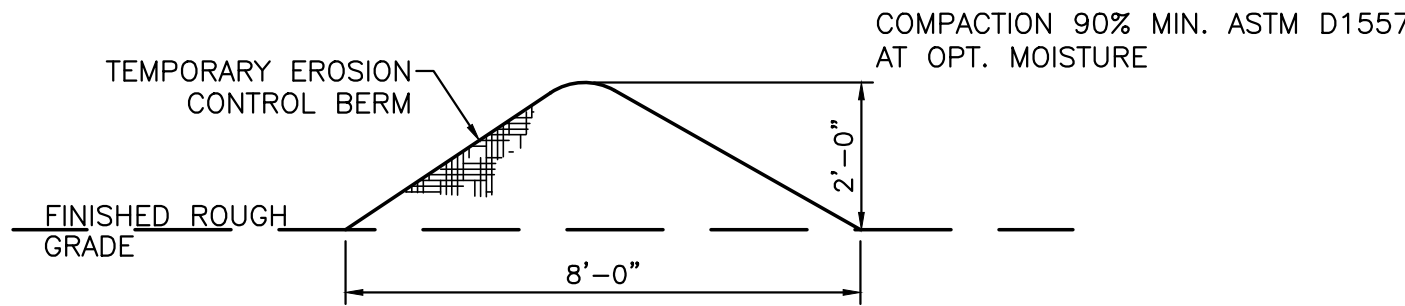




SILT FENCE INLET PROTECTION

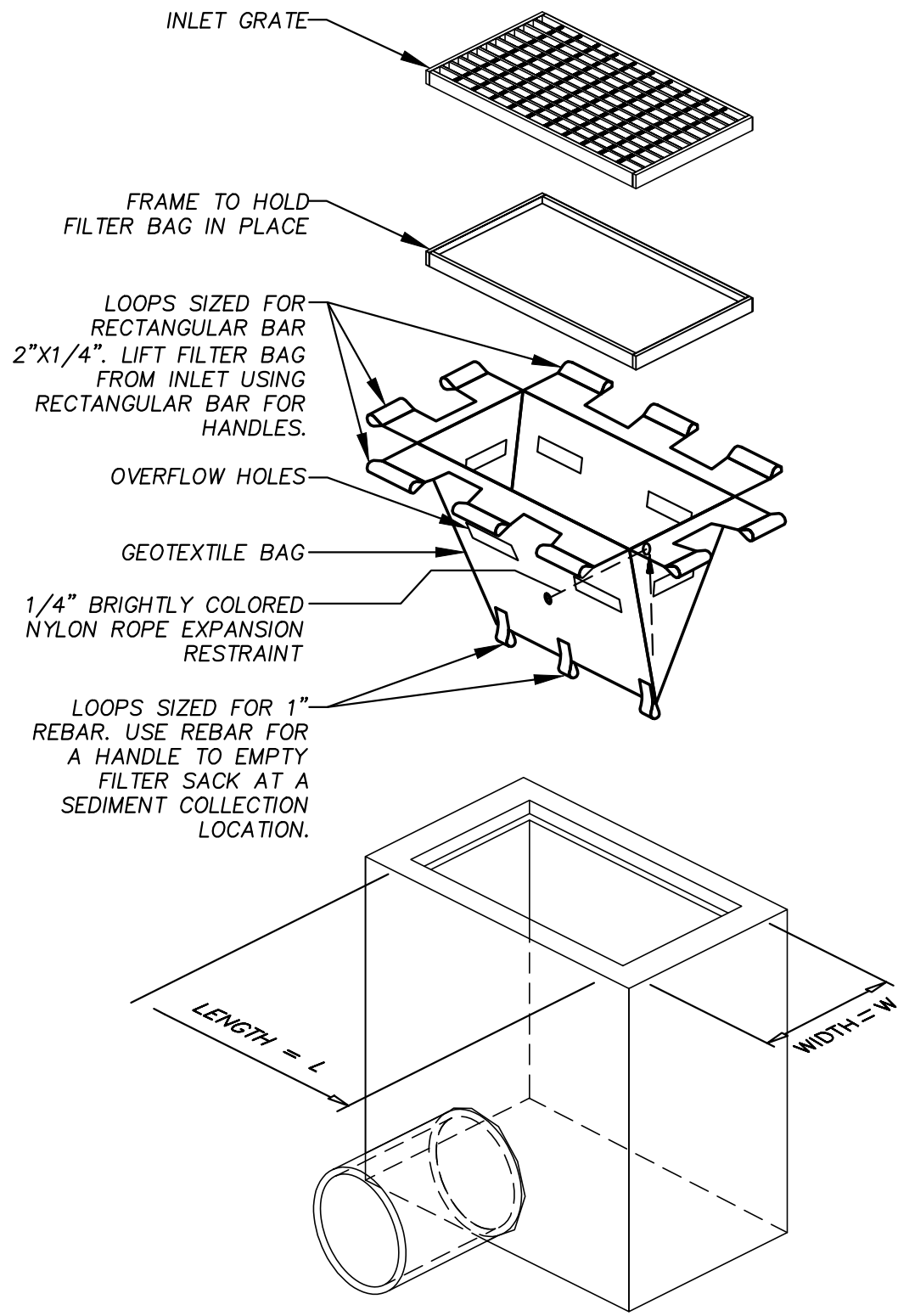
N.T.S.

IP6

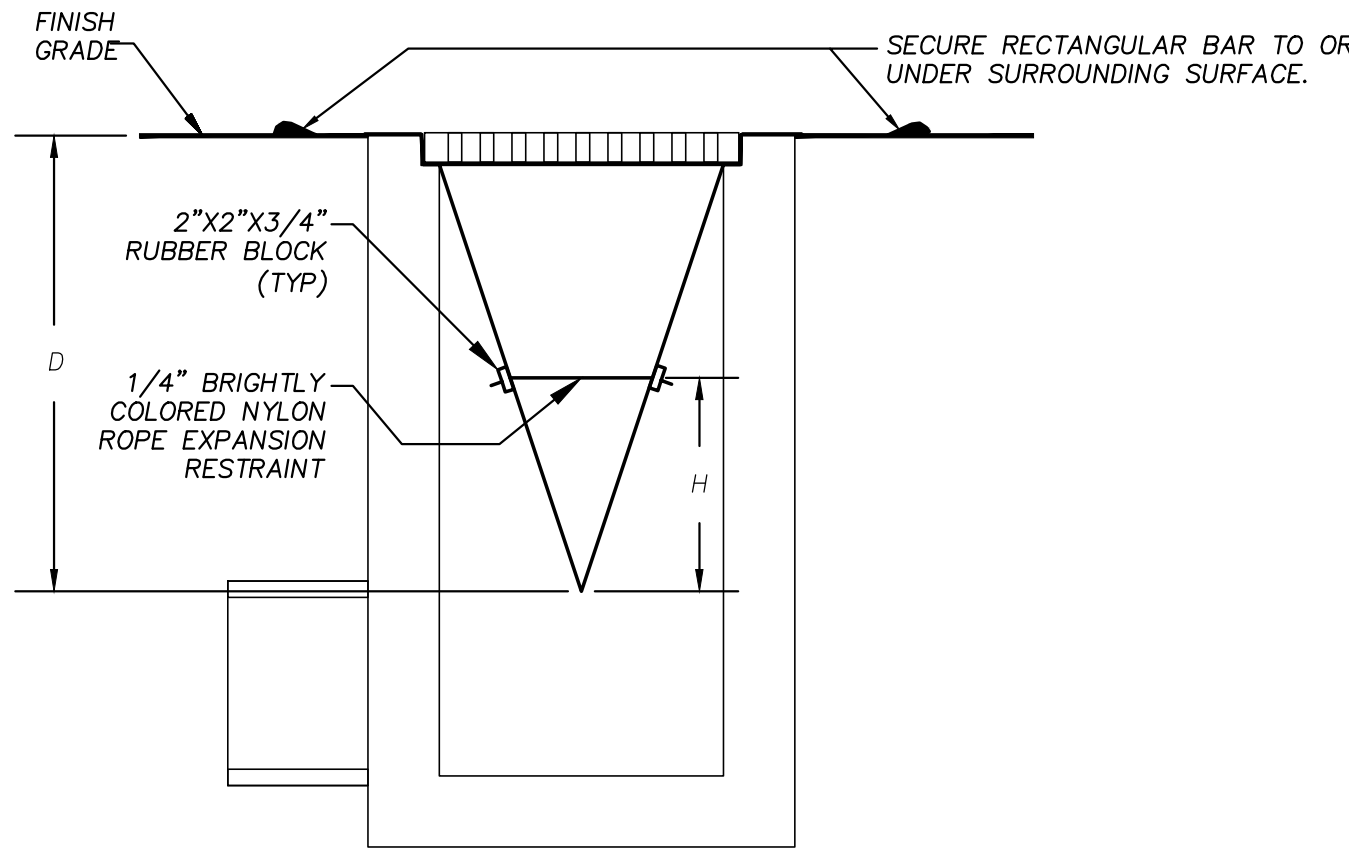


EROSION CONTROL BERM DETAIL

N.T.S.



ISOMETRIC VIEW



SECTION VIEW

(FILTER SACK INSTALLED)

- NOTES:
1. GEOTEXTILE SHALL BE A WOVEN POLYPROPYLENE FABRIC THAT MEETS OR EXCEEDS REQUIREMENTS IN THE SPECIFICATIONS TABLE.
  2. PLACE AN OIL ABSORBENT PAD OR PILLOW OVER INLET GRATE WHEN OIL SPILLS ARE A CONCERN.
  3. THE WIDTH, "W", OF THE FILTER SACK SHALL MATCH THE INSIDE WIDTH OF THE GRATED INLET BOX.
  4. THE DEPTH, "D", OF THE FILTER SACK SHALL BE BETWEEN 18 INCHES AND 36 INCHES.
  5. THE LENGTH, "L", OF THE FILTER SACK SHALL MATCH THE INSIDE LENGTH OF THE GRATED INLET BOX.

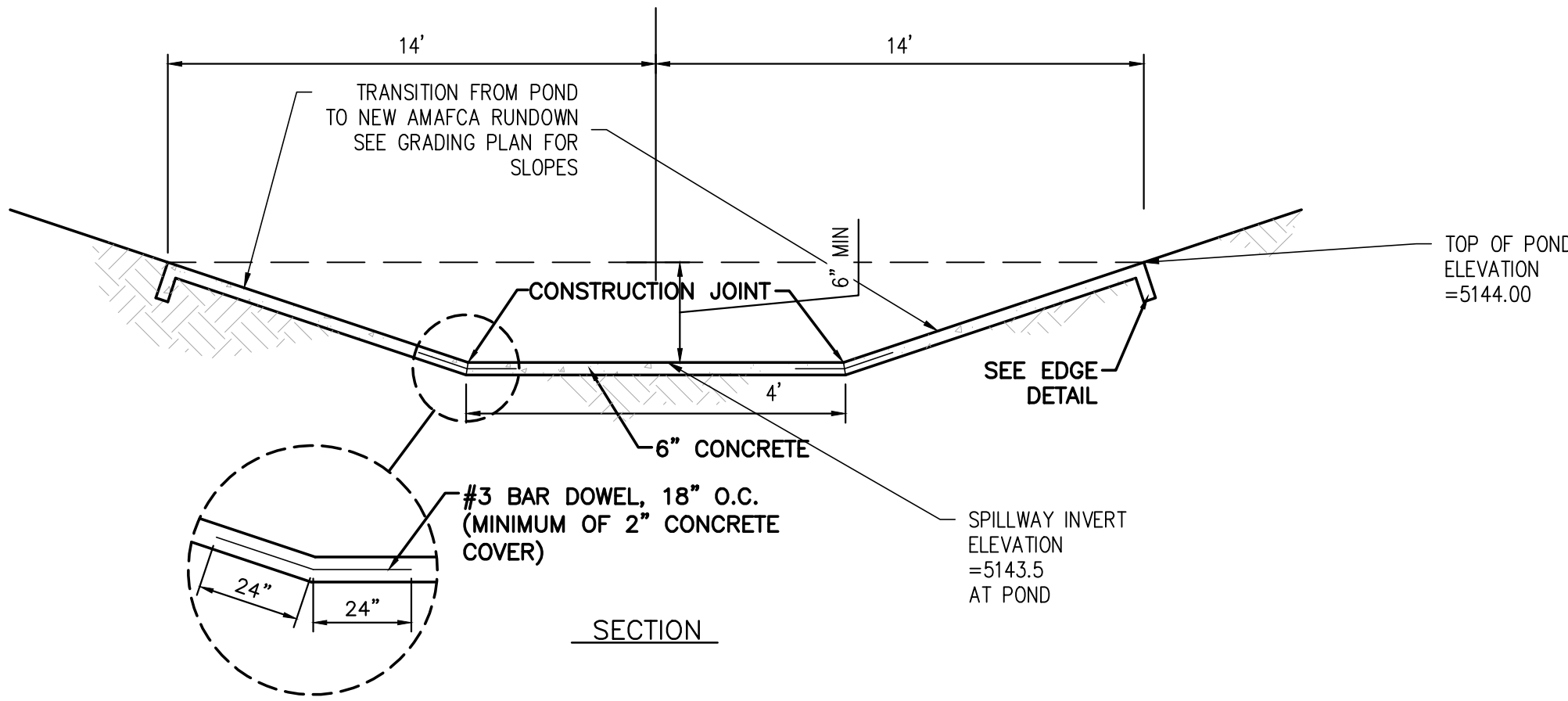
- MAINTENANCE NOTES:
1. INLET PROTECTION DEVICES MUST BE INSPECTED FOR SEDIMENT ACCUMULATION WITHIN THE CATCH BASIN. REMOVE TRAPPED SEDIMENT WHEN BRIGHTLY COLORED EXPANSION RESTRAINT CAN NO LONGER BE SEEN.
  2. REMOVAL OF SEDIMENT ACCUMULATED IN OR ADJACENT TO A STORM DRAIN INLET MUST BEGIN IMMEDIATELY UPON DISCOVERY, WITH COMPLETION OF THE ACTIVITY OCCURRING NO LATER THAN THE END OF THE FOLLOWING BUSINESS DAY.
  3. INLET PROTECTION DEVICES SHALL BE INSPECTED FOR UNINTENDED BYPASS OR IMPROPER FLOW-RATES THAT MAY CAUSE DOWNSTREAM FLOODING.
  4. CONTACT THE CEC FOR ALTERNATE INLET PROTECTION IF THE DESIGNED PROTECTION MAY IMPACT DOWNSTREAM Bmps, ADJACENT SLOPES, ETC., DUE TO PONDING ISSUES. ENSURE THAT NO UNDERMINING OF INLET PROTECTION DEVICES HAS OCCURRED.
  5. INLET PROTECTION DEVICES AND BARRIERS SHALL BE REPAIRED OR REPLACED IF THEY SHOW SIGNS OF UNDERMINING OR DETERIORATION.

LOW TO MODERATE FLOW GEOTEXTILE FABRIC SPECIFICATION TABLE			MODERATE TO HIGH FLOW GEOTEXTILE FABRIC SPECIFICATION TABLE		
PROPERTIES	TEST METHOD	UNITS	PROPERTIES	TEST METHOD	UNITS
GRAB TENSILE STRENGTH	ASTM D-4632	300 LBS	GRAB TENSILE STRENGTH	ASTM D-4632	265 LBS
GRAB TENSILE ELONGATION	ASTM D-4632	20 %	GRAB TENSILE ELONGATION	ASTM D-4632	20 %
PUNCTURE	ASTM D-4833	120 LBS	PUNCTURE	ASTM D-4833	135 LBS
MULLEN BURST	ASTM D-3786	800 PSI	MULLEN BURST	ASTM D-3786	420 PSI
TRAPEZOID TEAR	ASTM D-4533	120 LBS	TRAPEZOID TEAR	ASTM D-4533	45 LBS
UV RESISTANCE	ASTM D-4355	80 %	UV RESISTANCE	ASTM D-4355	90 %
APPARENT OPENING SIZE	ASTM D-4751	40 US SIEVE	APPARENT OPENING SIZE	ASTM D-4751	20 US SIEVE
FLOW RATE	ASTM D-4491	40 GAL/MIN/SQ FT	FLOW RATE	ASTM D-4491	200 GAL/MIN/SQ FT
PERMITTIVITY	ASTM D-4491	0.55 SEC -1	PERMITTIVITY	ASTM D-4491	1.5 SEC -1

IP5 INLET PROTECTION FILTER SACK

N.T.S.

FOR USE ONLY IN PAVED AREAS WHERE SEDIMENT LOADS ARE EXPECTED TO BE VERY LOW. FILTER SACK MUST HAVE OVERFLOW HOLES TO PREVENT PONDING.

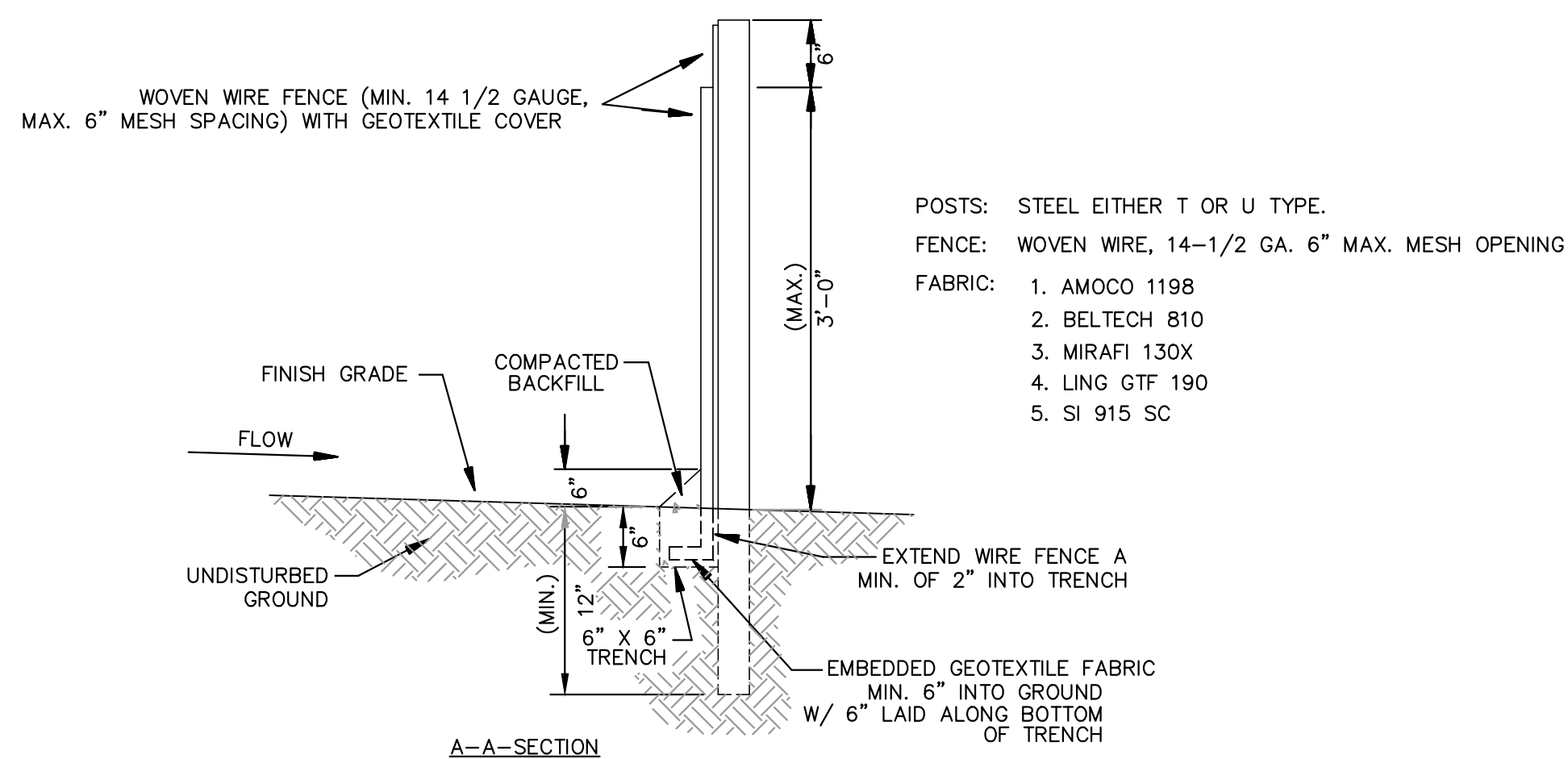
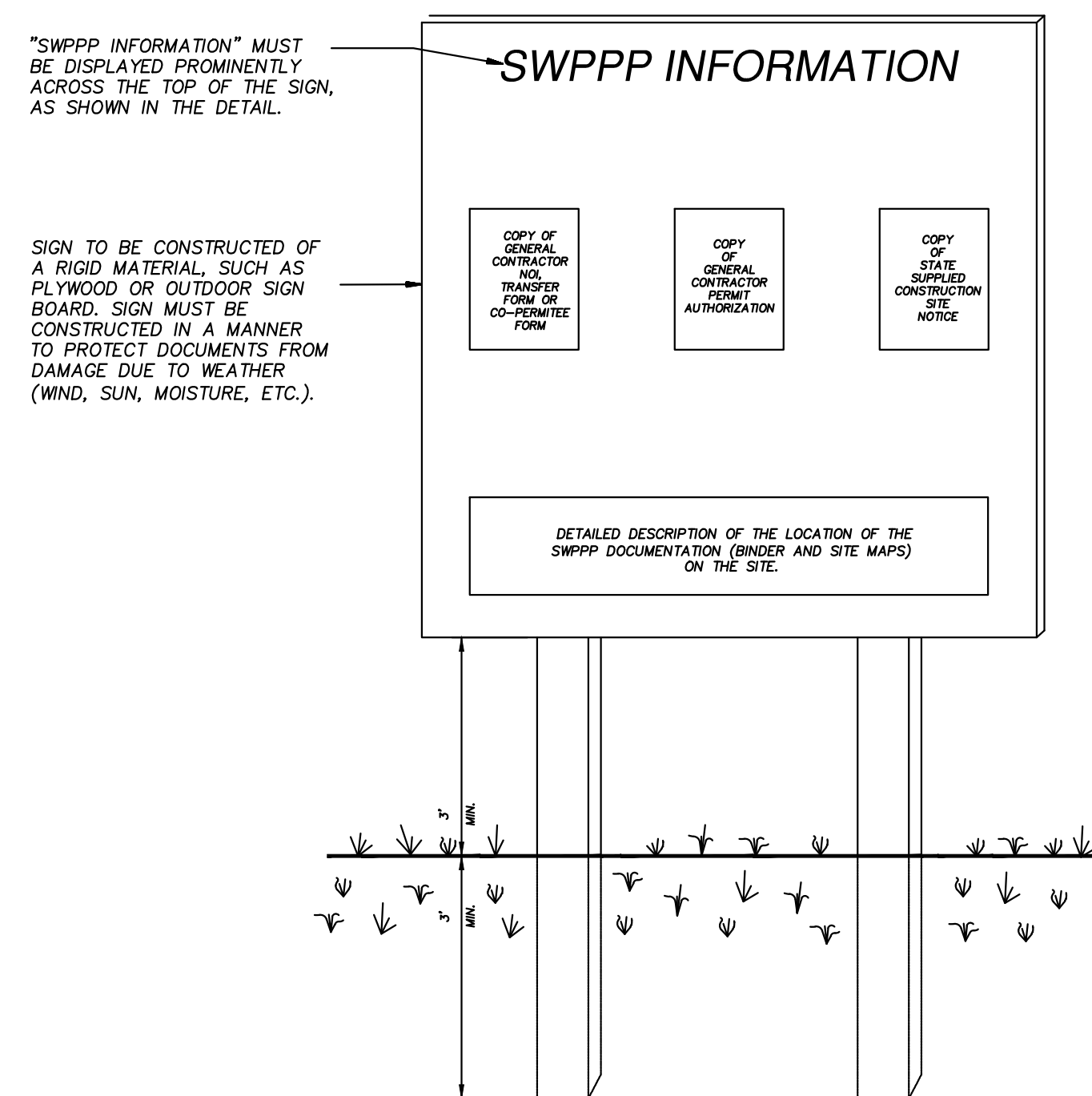
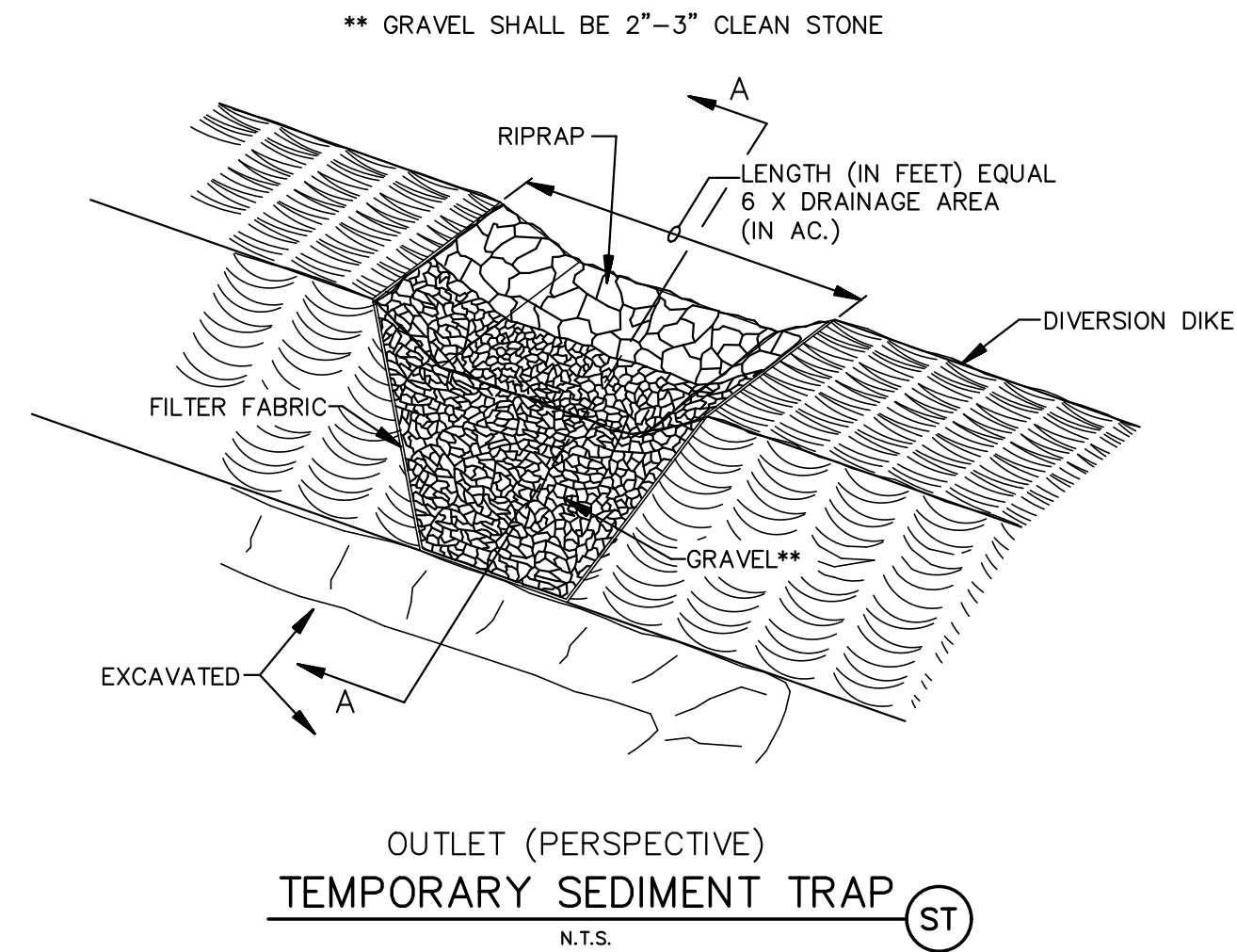
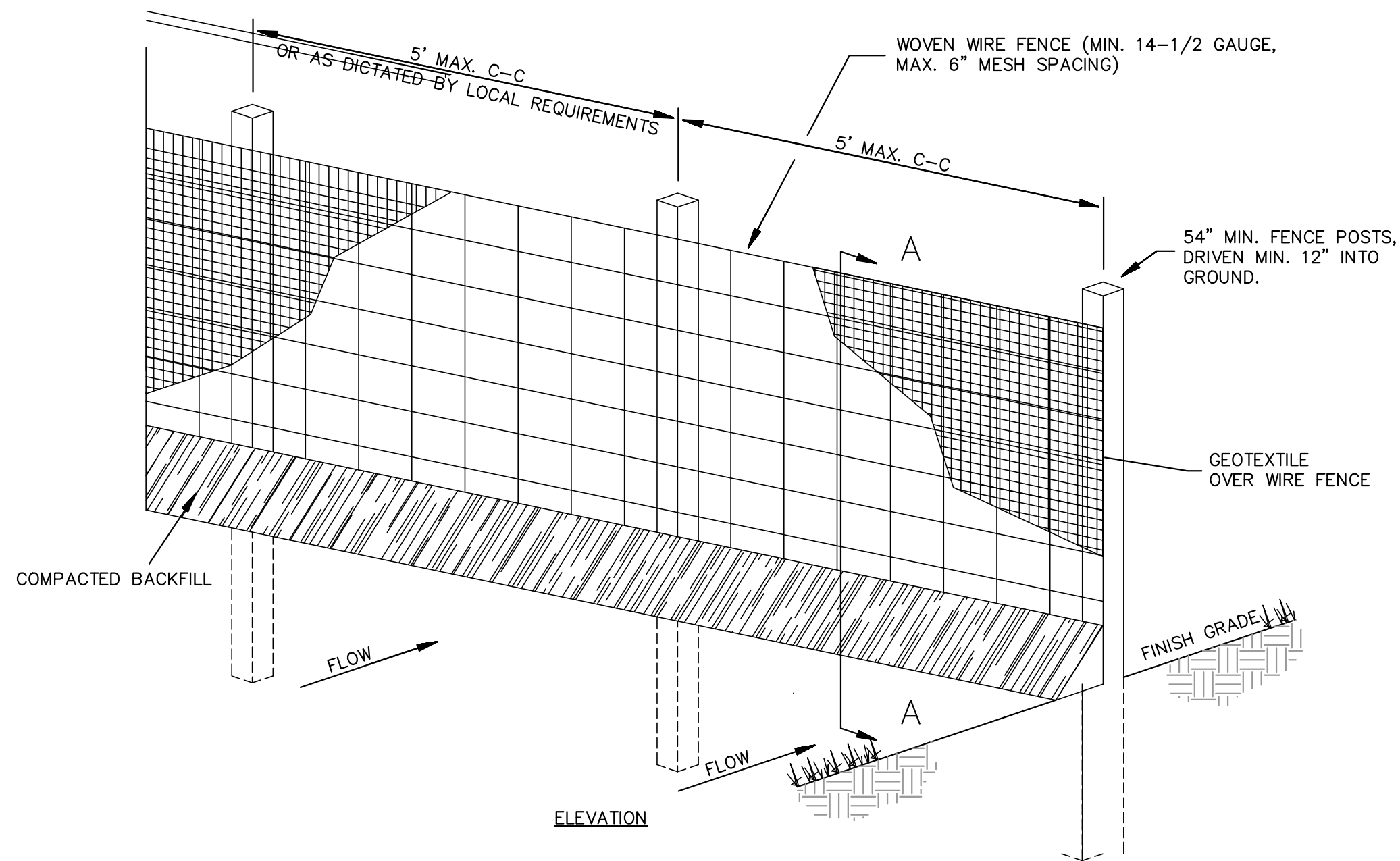
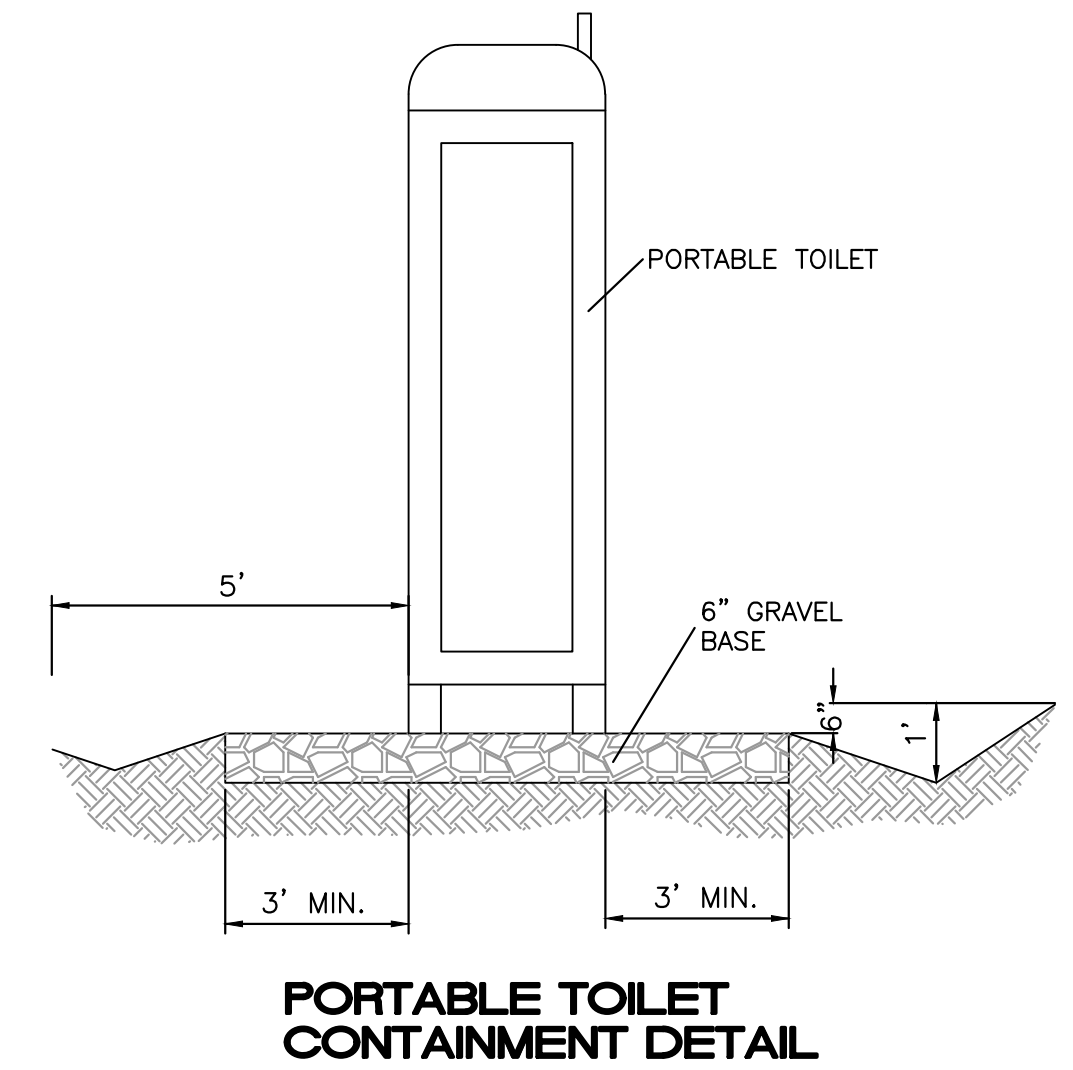
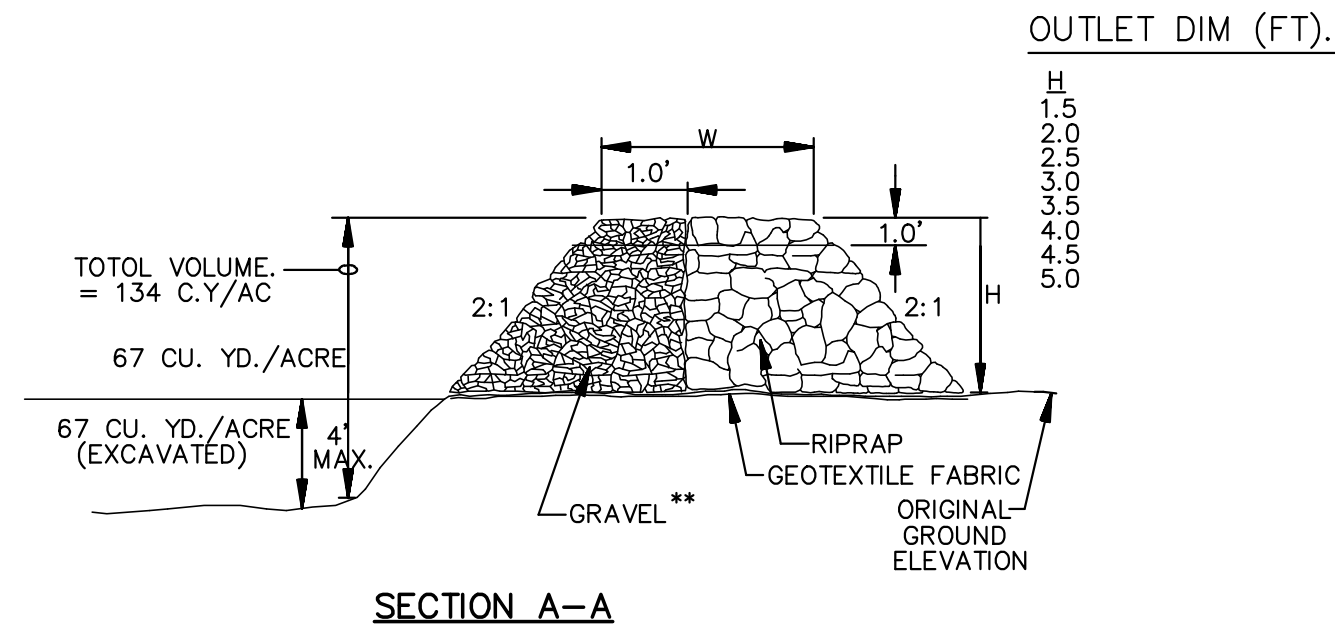
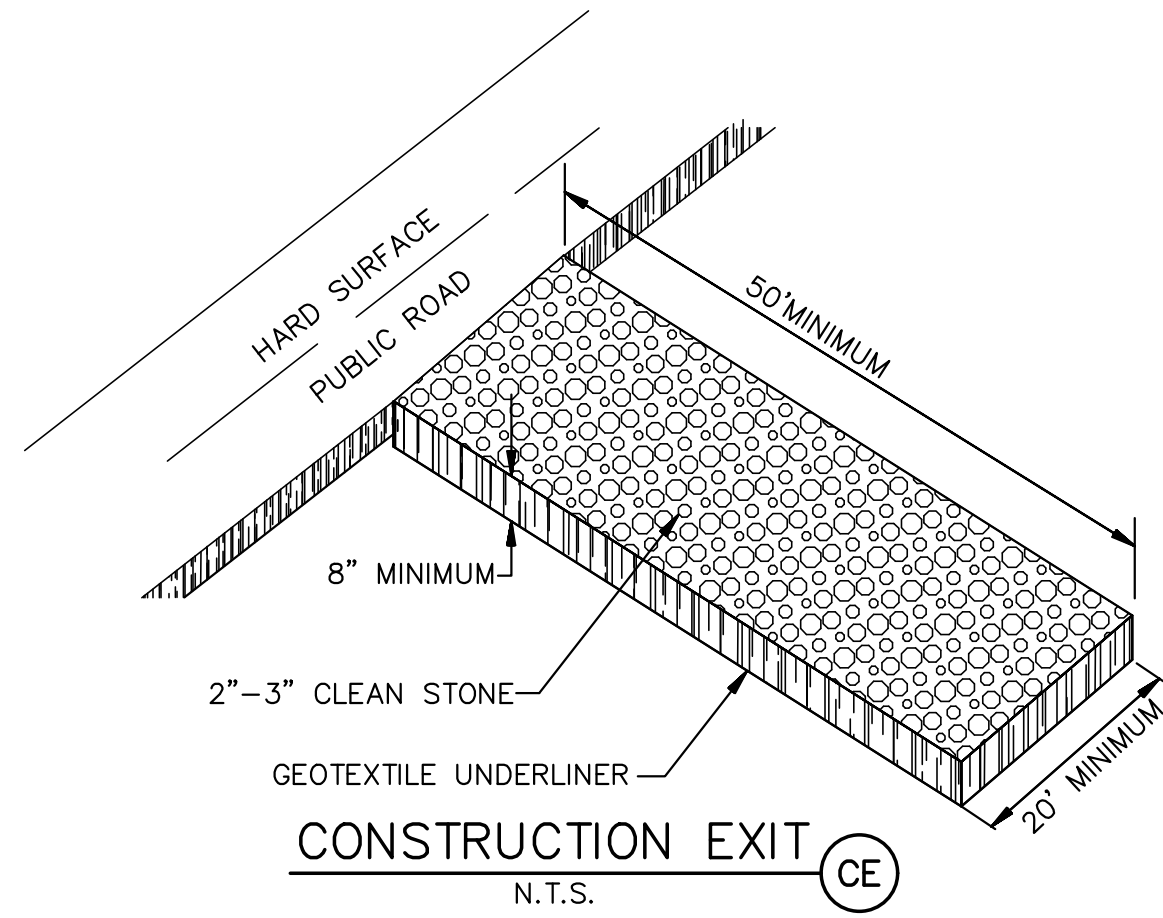


CONCRETE RUNDOWN/SPILLWAY

N.T.S.

<div>ENGINEER'S SEAL</div> <div></div> <div>RONALD R. BOHANNAN P.E. #7868</div>	WINTERGREEN LUXURY APARTMENTS 10800 GOLF COURSE RD. NW <b>ESC DETAILS</b>	DRAWN BY RG
		DATE 12/14/2021
	<div></div> <div>TIERRA WEST, LLC 5571 MIDWAY PARK PLACE NE ALBUQUERQUE, NM 87109 (505) 858-3100 www.tierrawestllc.com</div>	2020013_SWPPP
		SHEET # <b>C7.3</b> JOB # 2020013





1. WOVEN WIRE FENCE TO BE FASTENED SECURELY TO FENCE POSTS WITH WIRE TIES.
2. GEOTEXTILE TO BE FASTENED SECURELY TO WOVEN WIRE FENCE WITH TIES SPACED EVERY 24" AT TOP AND MID SECTION.
3. WHEN TWO SECTIONS OF GEOTEXTILE ADJOIN EACH OTHER THEY SHALL BE OVERLAPPED BY SIX INCHES AND FOLDED.
4. MAINTENANCE SHALL BE PERFORMED AS NOTED IN THE EROSION CONTROL PLAN. COLLECTED MATERIAL SHALL BE REMOVED WHEN "BULGES" DEVELOP IN THE SILT FENCE.
5. ALL SILT FENCE SHALL INCLUDE WIRE SUPPORT UNLESS INDICATED OTHERWISE

- NOTES:
- 1) THE SWPPP INFORMATION SIGN MUST BE LOCATED NEAR THE CONSTRUCTION EXIT OF THE SITE, SUCH THAT IT IS ACCESSIBLE AND VIEWABLE BY THE GENERAL PUBLIC, BUT NOT OBSTRUCTING VIEWS AS TO CAUSE A SAFETY HAZARD.
  - 2) ALL POSTED DOCUMENTS MUST BE MAINTAINED IN A CLEARLY READABLE CONDITION AT ALL TIMES THROUGHOUT CONSTRUCTION AND UNTIL THE NOTICE-OF-TERMINATION (NOT) IS FILED FOR THE PERMIT.
  - 3) CONTRACTOR SHALL POST OTHER STORM WATER AND/OR EROSION AND SEDIMENT CONTROL RELATED PERMITS ON THE SIGN AS REQUIRED BY THE GOVERNING AGENCY.
  - 4) SIGN SHALL BE LOCATED OUTSIDE OF PUBLIC RIGHT-OF-WAY AND EASEMENTS UNLESS APPROVED BY THE GOVERNING AGENCY.
  - 5) CONTRACTOR IS RESPONSIBLE FOR ENSURING STABILITY OF THE SWPPP INFORMATION SIGN.

SEDIMENTATION/SILT FENCE WITH WIRE SUPPORT

SWPPP INFORMATION SIGN

	ENGINEER'S SEAL	WINTERGREEN LUXURY APARTMENTS
	10800 GOLF COURSE RD. NW	DRAWN BY RG
	12/14/2021	DATE
ESC DETAILS		2020013_SWPPP
SHEET #		C7.4
JOB #		2020013