

# CITY OF ALBUQUERQUE



February 3, 2009

John Arthur Blessen, P.E.  
**J. Arthur Blessen Engineering**  
11930 Menaul Ste. 109  
Albuquerque, New Mexico 87112

**Re: Cibola High School—School Addition & Renovations, 1510 Ellison Rd.  
NW,**

**(A-13/D004)**

**Approval of Permanent Certificate of Occupancy,**

**Engineer's Stamp Dated: 7-02-07**

**Engineer's Certification Date: 2-03-09**

PO Box 1293

Dear Mr. Blessen,

Albuquerque

Based upon the information provided on 1/13/09, the above referenced certification is approved for release of Permanent Certificate of Occupancy by Hydrology.

NM 87103

If you have any questions, you can contact me at 924-3982.

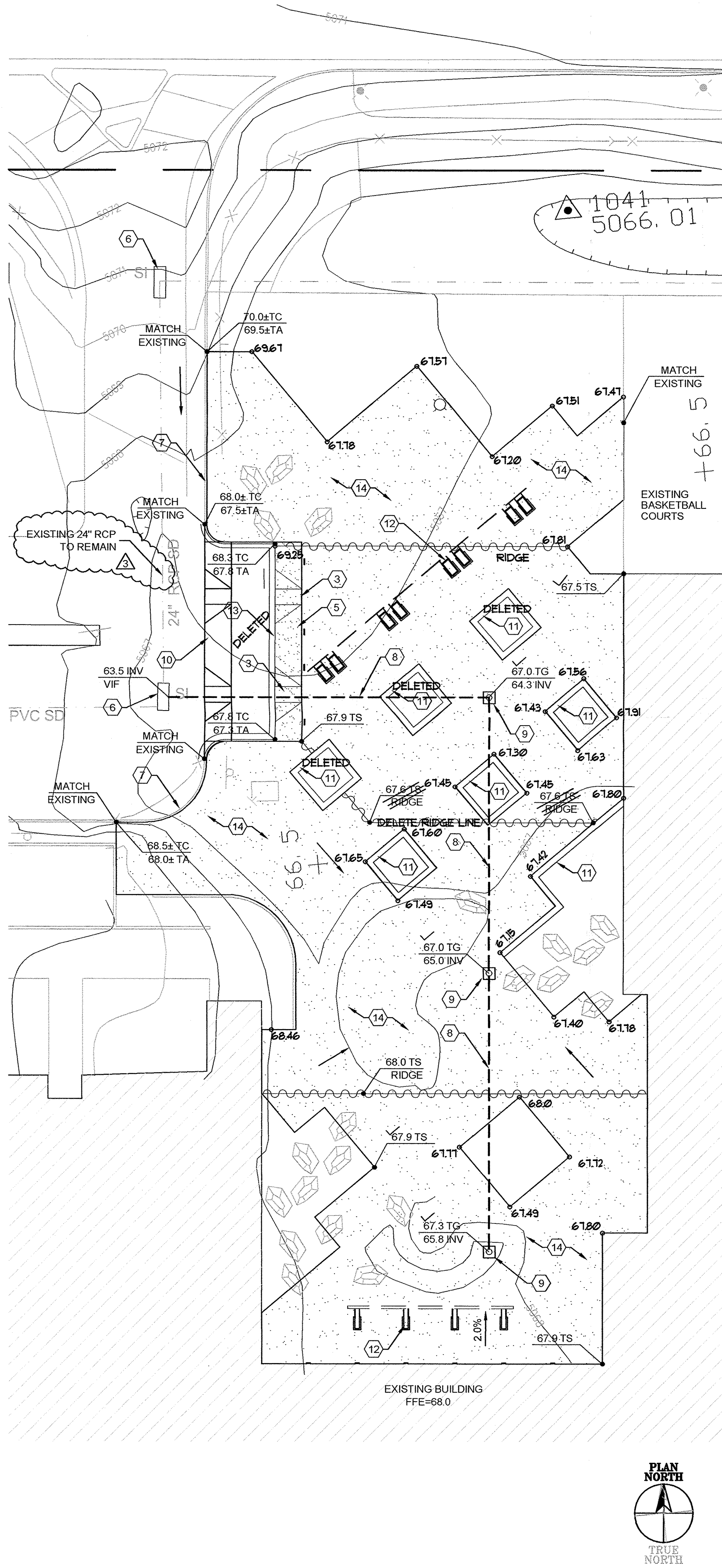
Sincerely,

www.cabq.gov

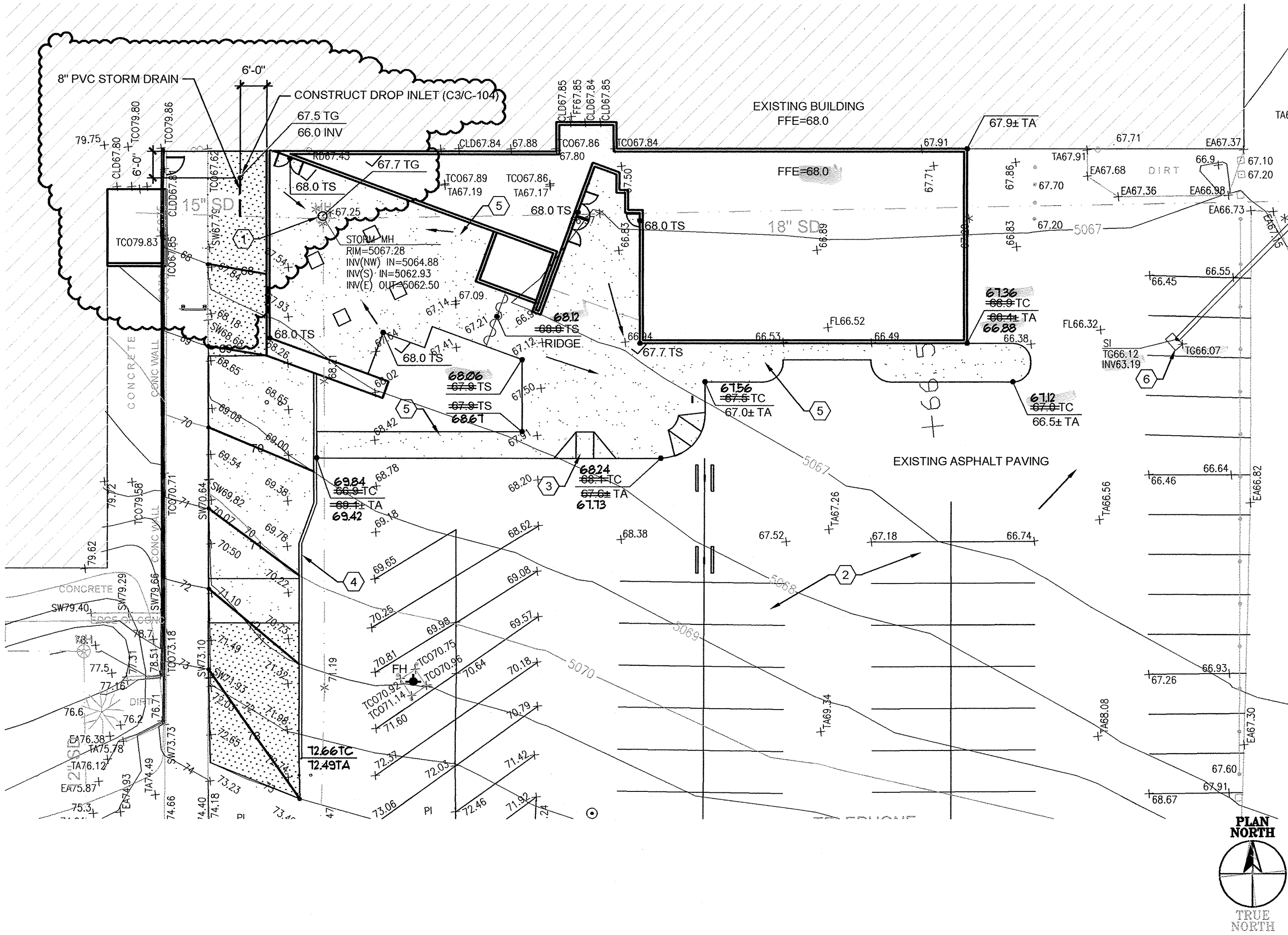
Timothy E. Sims  
Plan Checker-Hydrology, Planning Dept  
Development and Building Services

C: CO Clerk—Katrina Sigala  
file

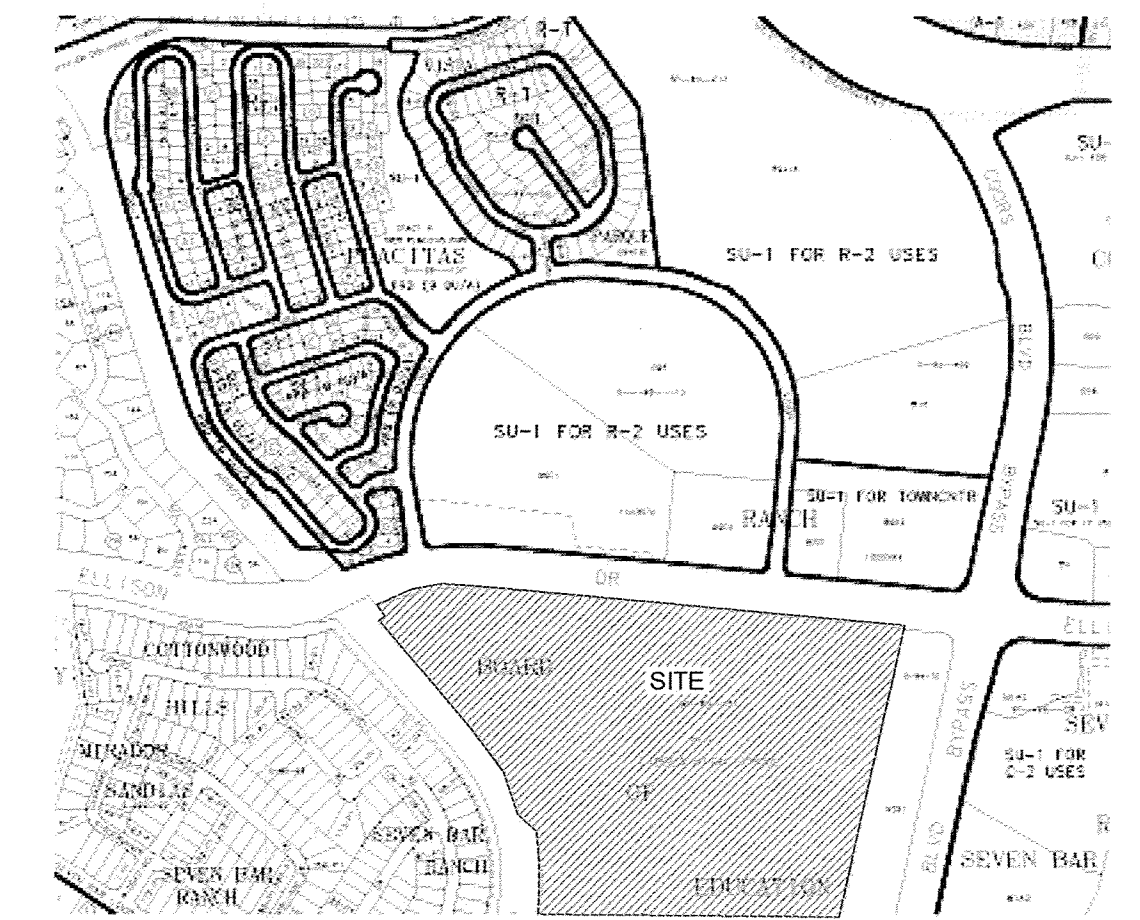




**A1**  
**COURT YARD**  
SCALE: 1"=20'-0"

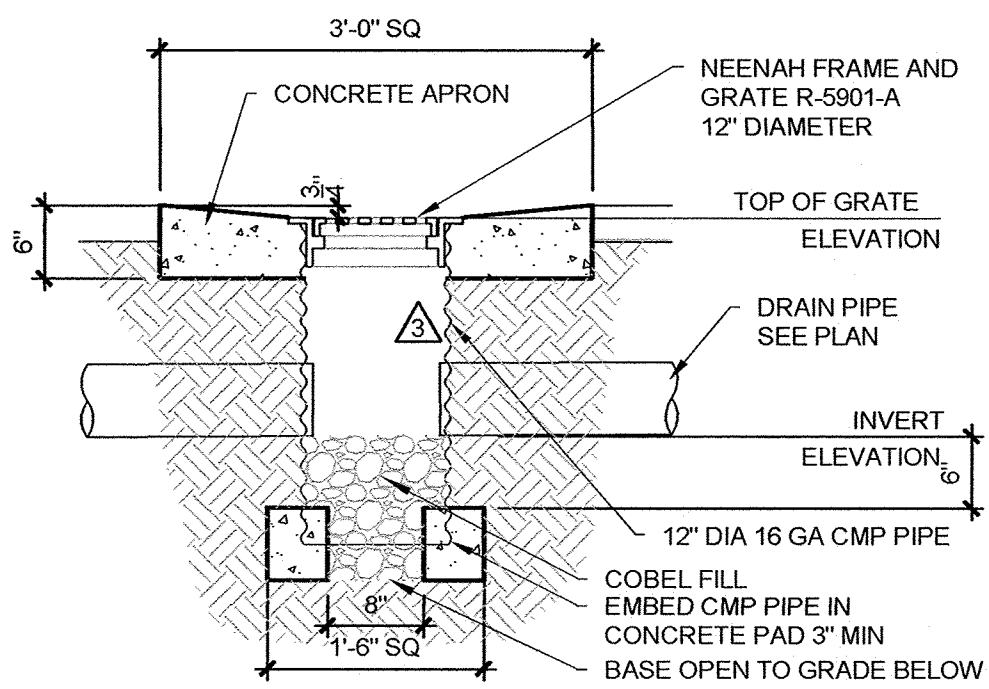


**A2**  
**ADMINISTRATION - GRADING PLAN**  
SCALE: 1"=20'-0"



**Z-A-13**  
**VICINITY MAP**  
SCALE: 1" = 750'+/-

- CONSTRUCTION NOTES**
- TWO WORKING DAYS PRIOR TO ANY EXCAVATION, THE CONTRACTOR SHALL CALL FOR LOCATION OF EXISTING UTILITIES.
  - ALL WORK WITHIN THE CITY RIGHT-OF-WAY SHALL BE PERFORMED IN ACCORDANCE WITH THE APPLICABLE CITY OF ALBUQUERQUE STANDARDS AND PROCEDURES.
  - ALL WORK SHALL BE PERFORMED IN ACCORDANCE WITH THE APPLICABLE FEDERAL, STATE, AND LOCAL REGULATIONS, LAWS, AND RULES CONCERNING SAFETY AND HEALTH.
  - PRIOR TO CONSTRUCTION THE CONTRACTOR SHALL VERIFY THE EXISTING SITE CONDITIONS AND INFORM THE ARCHITECT/ENGINEER OF ANY DISCREPANCY BETWEEN THE INFORMATION SHOWN ON THE PLANS AND THOSE OF THE EXISTING SITE.
  - THE CONTRACTOR SHALL PROVIDE THE ARCHITECT/ENGINEER WITH AN AS BUILT SURVEY FOR ENGINEER'S CERTIFICATION.
  - THE CONTRACTOR SHALL MAINTAIN A RECORD DRAWING SET OF PLANS AND PROMPTLY LOCATE EXISTING AND NEW ELEVATIONS (FINISH FLOORS, TOPS OF CURBS AND ASPHALT, FLOW LINE, PIPE INVERTS, ETC.), ON THE RECORD SET. THE RECORD SET SHALL BE MAINTAINED ON THE PROJECT SITE AND SHALL BE AVAILABLE TO THE OWNER AND ARCHITECT AT ANY TIME DURING CONSTRUCTION. UPON COMPLETION OF THE PROJECT, THE RECORD SET SHALL BE TURNED OVER TO THE OWNER.
  - THE OWNER / CONTRACTOR SHALL SUBMIT A NOTICE OF INTENT (NOI) TO THE EPA PRIOR TO BEGINNING OF CONSTRUCTION.
  - CONTRACTOR SHALL COMPLY WITH STORM WATER POLLUTION PREVENTION PLAN (SWPPP) SPECIFIC TO THIS PROJECT.
  - ALL POND BOTTOMS SHALL RECEIVE GRAVEL AND FILTER FABRIC SEE LANDSCAPE PLAN.



**C3**  
**DROP INLET**  
SCALE: 3/4"=1'-0"

- KEYNOTES**
- RESET EXISTING MANHOLE FRAME, PROVIDE AND INSTALL NEW PERFORATED GRATE
  - EXISTING ASPHALT PAVING TO REMAIN, SEE SITE DEMOLITION PLANS FOR EXTENT OF DEMOLITION WORK
  - NEW ACCESSIBLE RAMP SEE DETAIL D4/C-501 INCLUDE IN BASE BID
  - NEW SIDEWALK SEE SITE PLAN C-103
  - NEW SIDEWALK SEE SITE PLAN C-103 INCLUDE IN BASE BID
  - EXISTING DROP INLET TO REMAIN
  - EXISTING CURB AND GUTTER
  - CONSTRUCT 8" DIA PVC SCHEDULE 80 STORM DRAIN, INCLUDE IN BID LOT #4
  - CONSTRUCT DROP INLET SEE C3/C-104 INCLUDE IN BID LOT #4
  - NEW ASPHALT PAVING SEE SITE PLAN INCLUDE IN BASE BID
  - CONCRETE PLANTER CURB SEE C4/C-501 INCLUDE IN BID LOT #4
  - NEW SIGNAGE SEE SHEET A-709
  - CONSTRUCT CURB AND GUTTER SEE DETAIL D2/C-501
  - NEW SIDEWALK SEE SITE PLAN C-103 INCLUDE IN BID LOT #4

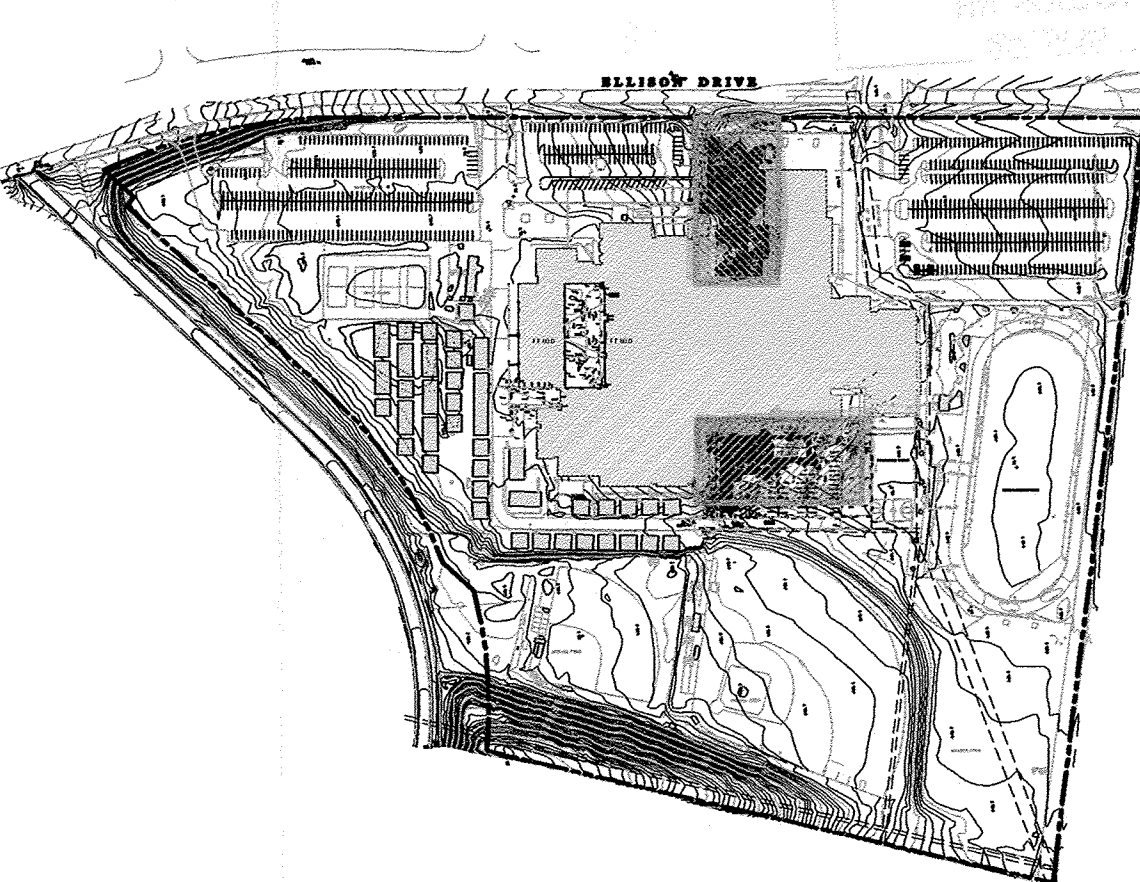
I, JOHN ARTHUR BLESSEN, NMPE 13481, OF THE FIRM J ARTHUR BLESSEN ENGINEERING, HEREBY CERTIFY THIS PROJECT HAS BEEN GRADED AND WILL DRAIN IN SUBSTANTIAL COMPLIANCE WITH AND IN ACCORDANCE WITH THE DESIGN INTENT OF THE APPROVED PLAN DATED 7/20/07. THE RECORD INFORMATION EDITED ONTO THE ORIGINAL DESIGN DOCUMENTS HAS BEEN OBTAINED BY ME OR UNDER MY DIRECT SUPERVISION AND IS TRUE AND CORRECT TO THE BEST OF MY KNOWLEDGE AND BELIEF. THIS CERTIFICATION IS SUBMITTED IN SUPPORT OF A REQUEST FOR PERMANENT CERTIFICATE OF OCCUPANCY.

THE RECORD INFORMATION PRESENTED HEREON IS NOT NECESSARILY COMPLETE AND INTENDED ONLY TO VERIFY SUBSTANTIAL COMPLIANCE OF THE GRADING AND DRAINAGE ASPECTS OF THIS PROJECT. THOSE RELYING ON THIS RECORD DOCUMENT ARE ADVISED TO OBTAIN INDEPENDENT VERIFICATION OR ITS ACCURACY BEFORE USING IT FOR ANY OTHER PURPOSE.

*John Arthur Blessen* 2-3-09 date  
J.Arthur Blessen, PE  
NM PE# 13481



- LEGEND:**
- EXISTING SPOT ELEVATION
  - NEW SPOT ELEVATION
  - EXISTING CONTOUR
  - NEW CONTOUR
  - SWALE
  - VERIFIED ELEVATION
  - AS BUILT ELEVATION
  - BASIN BOUNDARY
  - PROPERTY LINE
  - FLOW LINE
  - GROUND
  - INVERT
  - TOP OF ASPHALT
  - TOP OF CURB
  - TOP OF GRATE
  - TOP OF CONCRETE SLAB
  - TOP OF WALL
  - TEMPORARY BENCH MARK
  - GRAVEL
  - ASPHALT PAVING
  - CONCRETE



**A5**  
**KEYED PLAN**  
SCALE: NOT TO SCALE

**CLAUDIO VIGIL**  
**ARCHITECTS**

1801 Rio Grande Boulevard, N.W.  
Albuquerque, New Mexico  
Phone: (505) 842-1113  
Fax: (505) 842-1330

**OWNERSHIP OF INSTRUMENTS OF SERVICE**  
All design concepts, details, specifications, plans, computer files, field data, notes and other documents and instruments prepared by Claudio Vigil Architects, P.C. as instruments of service shall remain the property of Claudio Vigil Architects, P.C. Claudio Vigil Architects, P.C. shall retain all common law, statutory and other reserved rights, including the copyright thereto.

**CONSULTANTS**  
*j arthur blessen engineering*  
architect engineer  
11930 Menaul Suite 109  
Albuquerque, NM 87112  
(505) 293-1477

**PROFESSIONAL SEAL**  
JOHN ARTHUR BLESSEN  
NEW MEXICO  
REGISTERED PROFESSIONAL ENGINEER  
13481  
7/2/07

**ALBUQUERQUE**  
**PUBLIC SCHOOLS**  
**CIBOLA HIGH**  
**SCHOOL**  
**SCHOOL ADDITIONS**  
**AND RENOVATIONS**  
1510 ELLISON ROAD, N.W.  
ALBUQUERQUE, NEW MEXICO

MARK	DATE	DESCRIPTION
3	7-2-07	COA COMMENTS
2	3-7-07	BID & BUILDING PERMIT SET
1	1-26-07	95% REVIEW SUBMITTAL

PROJECT NUMBER: 06079  
DRAWING FILE: APS-CIBOLA-C104-GRADING.DWG  
DRAWN BY: jdb  
CHECK BY: jdb  
COPYRIGHT: CLAUDIO VIGIL ARCHITECTS 2007  
DATE: MARCH 7, 2007

**SHEET TITLE**  
**GRADING PLAN**

**SHEET NUMBER**  
**C-104**