

CITY OF ALBUQUERQUE



March 24, 2009

Diane Hoelzer, P.E.
Mark Goodwin & Associates, PA
P.O. Box 90606
Albuquerque, NM 87199

**Re: Cibola Loop Conceptual Grading and Drainage Plan
Engineer's Stamp dated 4-2-08 (A13/D011)**

Dear Ms. Hoelzer,

Based upon the information provided in your submittal received 3-16-09 the above referenced plan is approved for Site Development Plan for Subdivision action by the DRB.

PO Box 1293

If you have any questions, you can contact me at 924-3695.

Albuquerque

Sincerely,

A handwritten signature in cursive script that reads "Curtis A. Cherne".

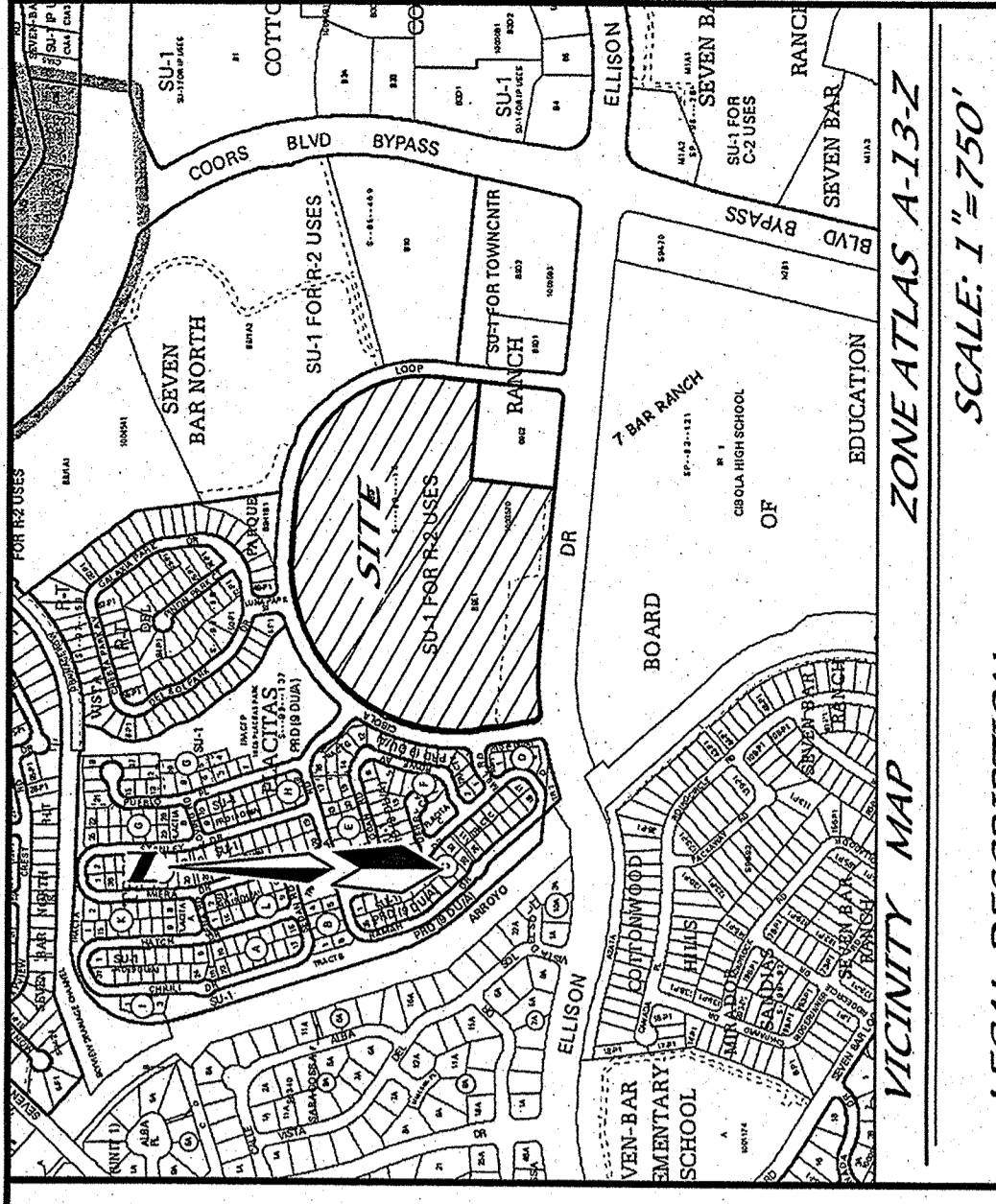
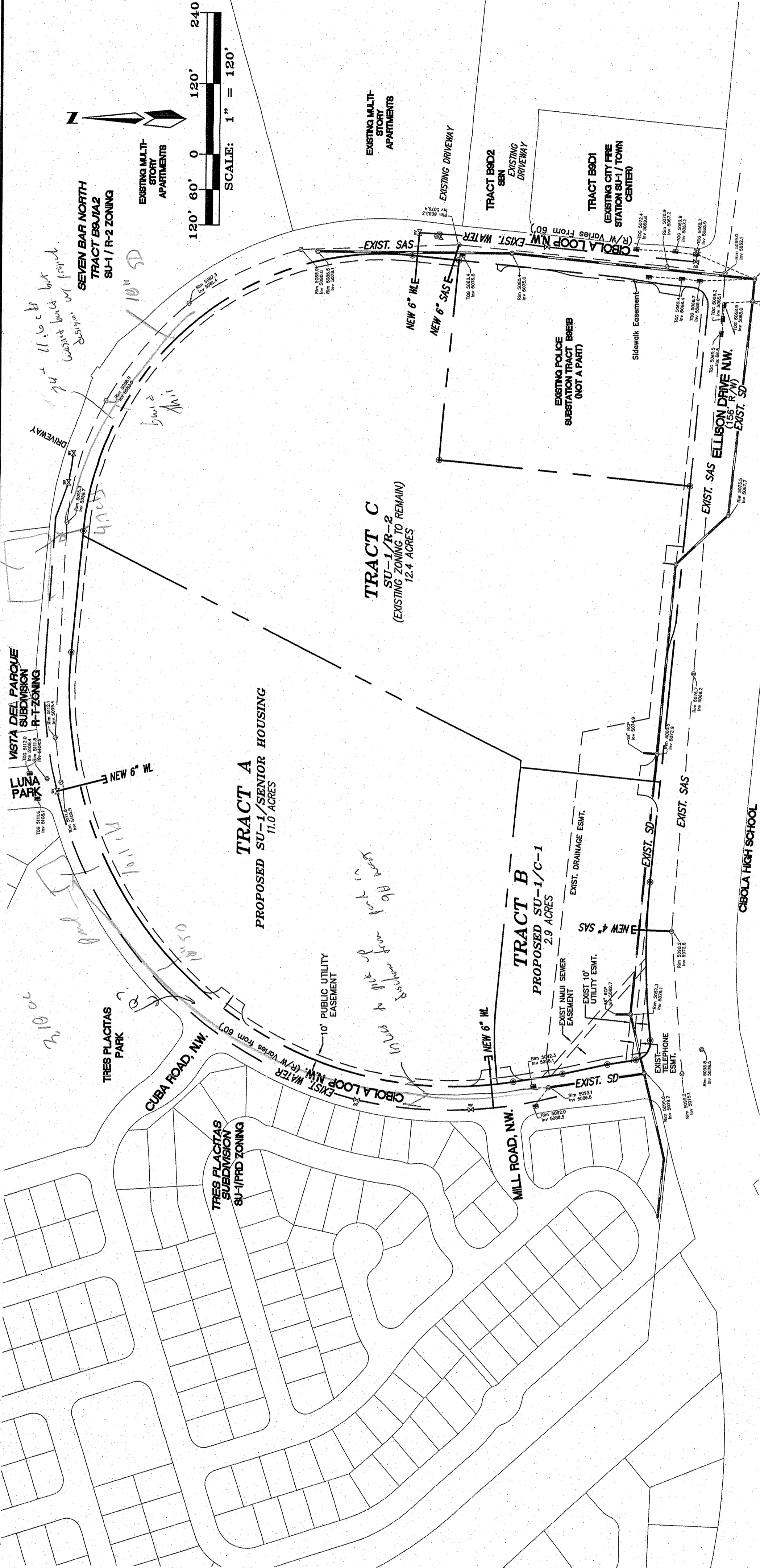
Curtis A. Cherne, P.E.
Senior Engineer, Planning Dept.
Development and Building Services

NM 87103

www.cabq.gov

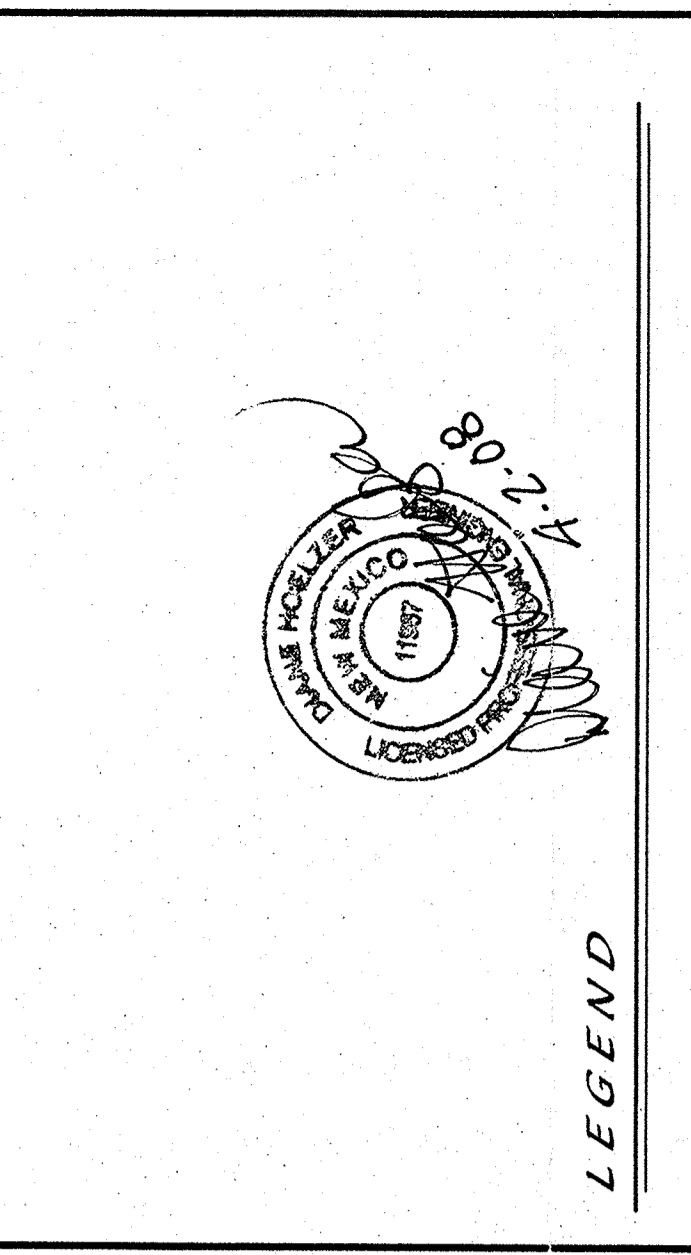
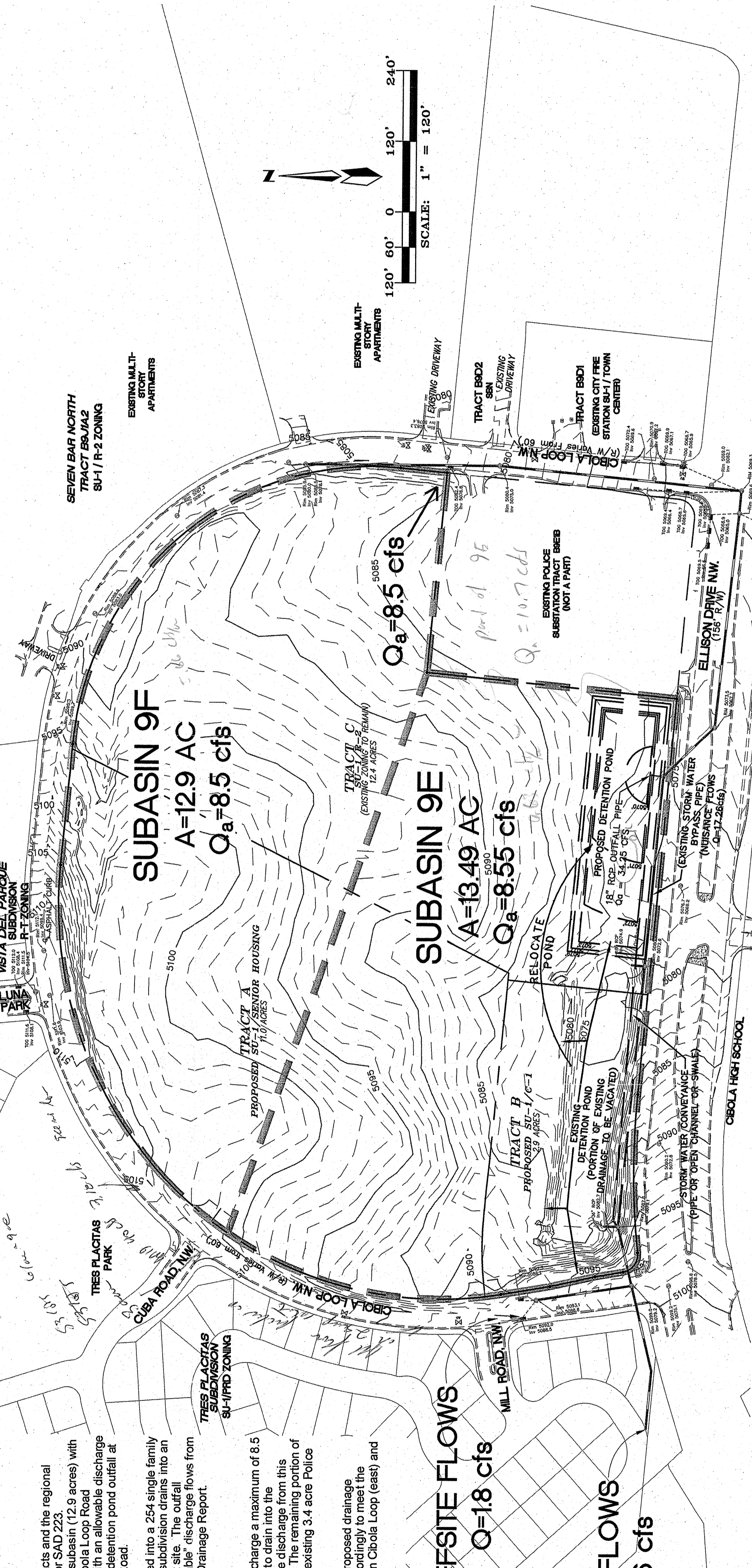
C: file
Brad Bingham

1. THIS SITE IS LOCATED WITHIN THE NEW MEXICO UTILITIES, INC. SERVICE AREA. MULLIL HAS ISSUED A LETTER OF AVAILABILITY INDICATING THAT IT IS ABLE TO SERVE THIS DEVELOPMENT.
2. THERE IS CURRENTLY EXISTING WATER AND SEWER INFRASTRUCTURE SURROUNDING THE SUBJECT PROPERTY.
3. THE FINAL LOCATING OF FIRE HYDRANTS WILL BE SUBJECT TO THE APPROVAL OF THE C.O.A. FIRE MARSHALL.



VICINITY MAP
SCALE: 1" = 750'

LEGAL DESCRIPTION
 TRACTS B-9F-1 AND B-9E-1-A OF SEVEN BAR RANCH AS THE SAME IS SHOWN AND DESIGNATED ON THE PLAT THEREOF, FILED IN THE OFFICE OF THE COUNTY CLERK OF BERNALILLO COUNTY, NEW MEXICO IN BOOK 2008C, PAGE 26, ON FEBRUARY 13, 2008.



LEGEND

| | |
|-----|---------------------------------|
| --- | DRAINAGE BASIN BOUNDARY |
| --- | NEW WATER LINE |
| --- | NEW SANITARY SEWER |
| --- | NEW FIRE HYDRANT |
| --- | NEW S/S MANHOLE |
| ○ | EXISTING SEWER MANHOLE |
| ○ | EXISTING STORM DRAIN MANHOLE |
| ○ | EXISTING UTILITY PEDESTAL |
| ○ | EXISTING UTILITY POLE |
| ○ | EXISTING LIGHT POLE |
| ○ | EXISTING ANCHOR |
| ○ | EXISTING OVERHEAD UTILITY LINES |
| ○ | EXISTING CHAIN LINK FENCE |
| ○ | EXISTING TRAFFIC SIGNAL BOX |
| ○ | EXISTING FIRE HYDRANT |
| ○ | EXISTING WATER VALVE |
| ○ | EXISTING UNKNOWN MANHOLE |
| ○ | EXISTING CABLE SIGN |
| ○ | EXISTING SIGN |
| ○ | 100% ALLOWABLE DISCHARGE |

CIBOLA LOOP
CONCEPTUAL UTILITY & DRAINAGE PLAN

dmj
 MARK GOODWIN & ASSOCIATES, F.A.
 CONSULTING ENGINEERS
 P.O. BOX 90606
 ALBUQUERQUE, NEW MEXICO 87199
 (505)828-2200, FAX (505)797-9539

Designed: JM Drawn: SPS Checked: DMG Sheet # of 4
 Scale: 1" = 60' Date: 4/2/2008 Job: A06040

Conceptual Drainage Plan

Existing Drainage Conditions:

Originally the Cibola project site was part of the larger Seven Bar Ranch Tracts and the regional master drainage plan was developed as part of the 1989 Drainage Report for SAD 223. In that report, the Cibola project site was divided into two subbasins. The NE subbasin (12.9 acres) with an allowable discharge of 8.5 cfs was directed to the southeast corner at Cibola Loop Road approximately 200' north of Ellison Road. The South subbasin (16.9 acres) with an allowable discharge of 10.7 cfs was directed to the corner of Cibola Loop and Ellison Road. The detention pond outfall at the southeast corner of the pond conveys runoff to a storm drain in Ellison Road.

In 1998 the offsite area west of the project site was subdivided and developed into a 254 single family subdivision known as Tres Placitas. Developed runoff from a portion of this subdivision drains into an existing detention pond located at the southwest corner of the Cibola project site. The outfall structure from this pond was designed and constructed to accept the "allowable" discharge flows from Subbasin 9E. The allowable peak discharge was determined in the SAS 223 Drainage Report.

Proposed Drainage Conditions:

The proposed conceptual drainage plan is for the northern subbasin 9F to discharge a maximum of 8.5 cfs into the existing storm drain in Cibola Loop and the southern subbasin 9E to drain into the proposed detention pond to the south. The maximum allowable discharge from this pond is 24.25 cfs with the allowable contribution from our project of 8.55 cfs. The remaining portion of the allowable 10.7 cfs from the SAD 223 report, or 2.15 cfs, comes from the existing 3.4 acre Police Station to the east.

Depending on how this project site ultimately is divided and developed the proposed drainage subbasins will be revised and detention ponds will be sized and designed accordingly to meet the maximum allowable discharge criteria into the existing storm drain systems in Cibola Loop (east) and Ellison Road (south).

OFFSITE FLOWS
 $Q_a = 18 \text{ cfs}$

OFFSITE FLOWS
 $Q_a = 20.6 \text{ cfs}$