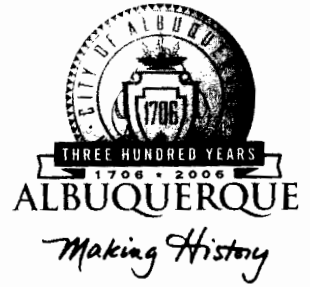


CITY OF ALBUQUERQUE



September 1, 2005

Jeffery G. Mortensen, P.E.
Jeff Mortenson & Associates Inc.
6010-B Midway Park Blvd NE
Albuquerque, NM 87109

**Re: LDS Westside Stake Streetscape, Grading Plan
Engineer's Stamp dated 08-25-05 (A13-D017)**

Dear Mr. Mortensen,

Based upon the information provided in your submittal dated 08-25-05, the above referenced plan is approved for Grading Permit. Please attach a copy of this approved plan to the construction sets prior to sign-off by Hydrology.

P.O. Box 1293

If you have any questions, you can contact me at 924-3695.

Albuquerque

New Mexico 87103

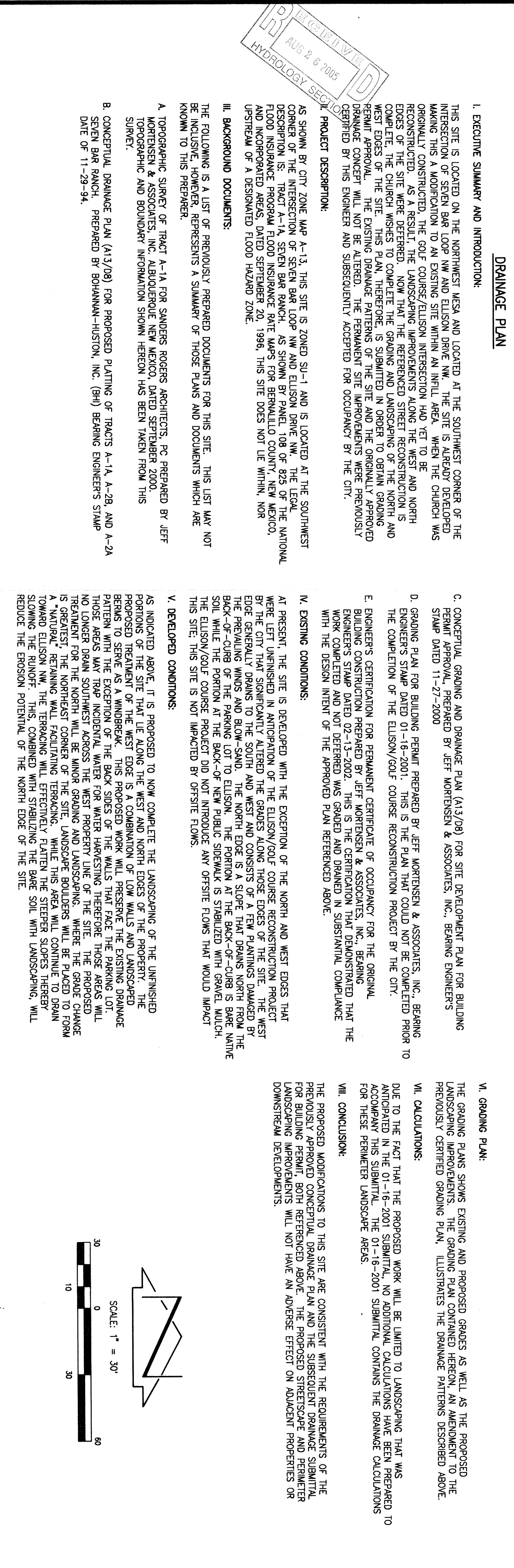
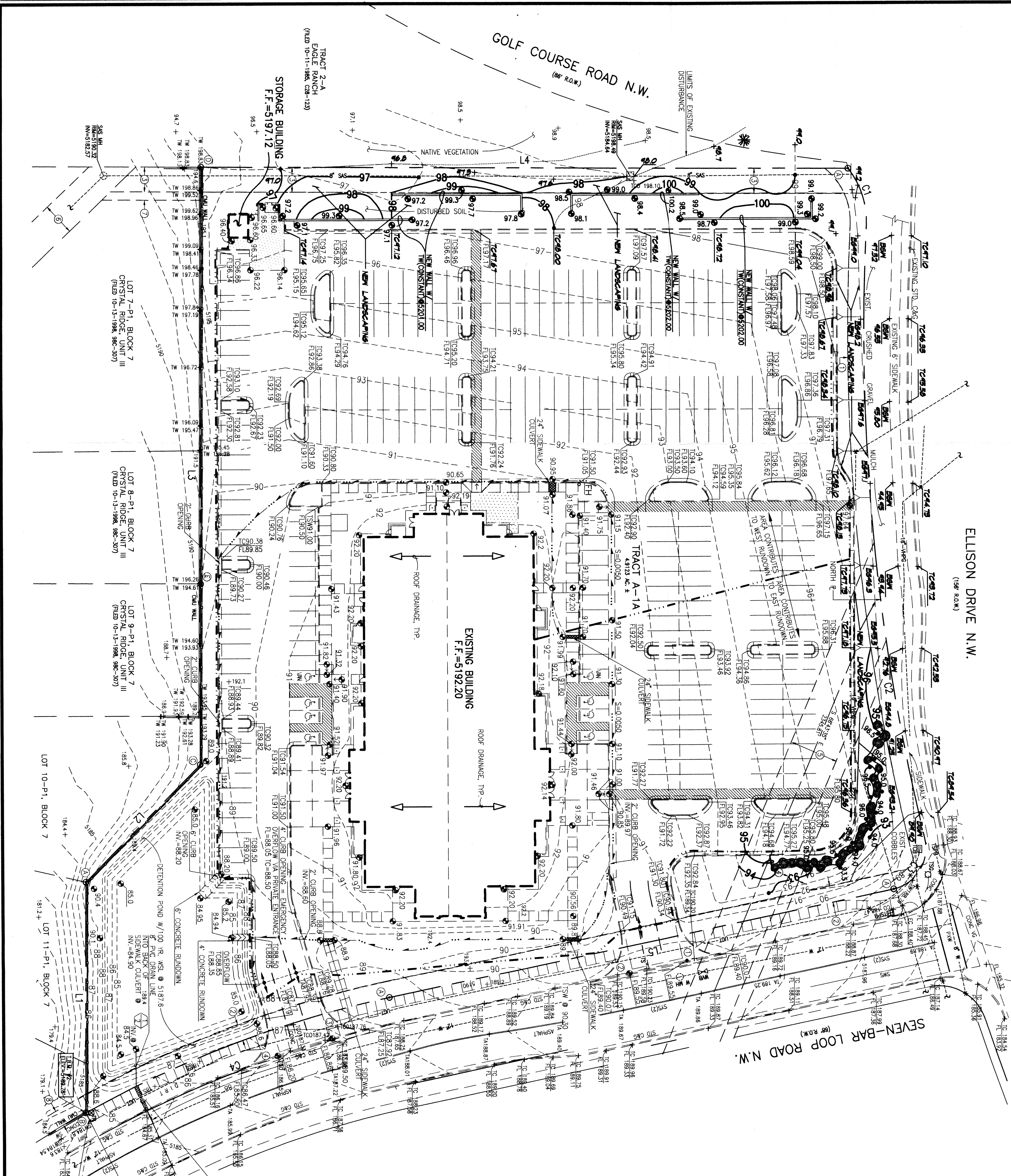
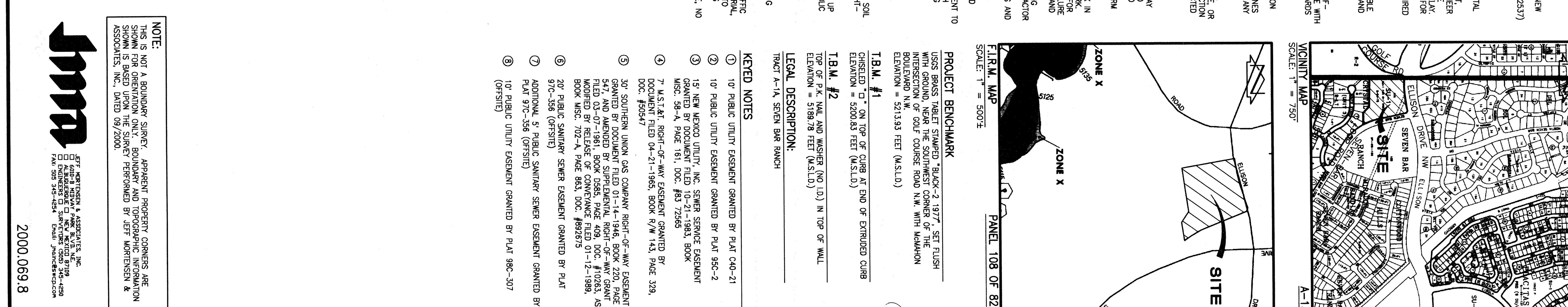
www.cabq.gov

Sincerely,

Rudy E. Rael Associate Engineer
Planning Department.
Development and Building Services

Bradley L. Bingham, PE
Principal Engineer, Planning Dept.
Development and Building Services

C: Chuck Carusso DMD
CC: file

[illegible][illegible]