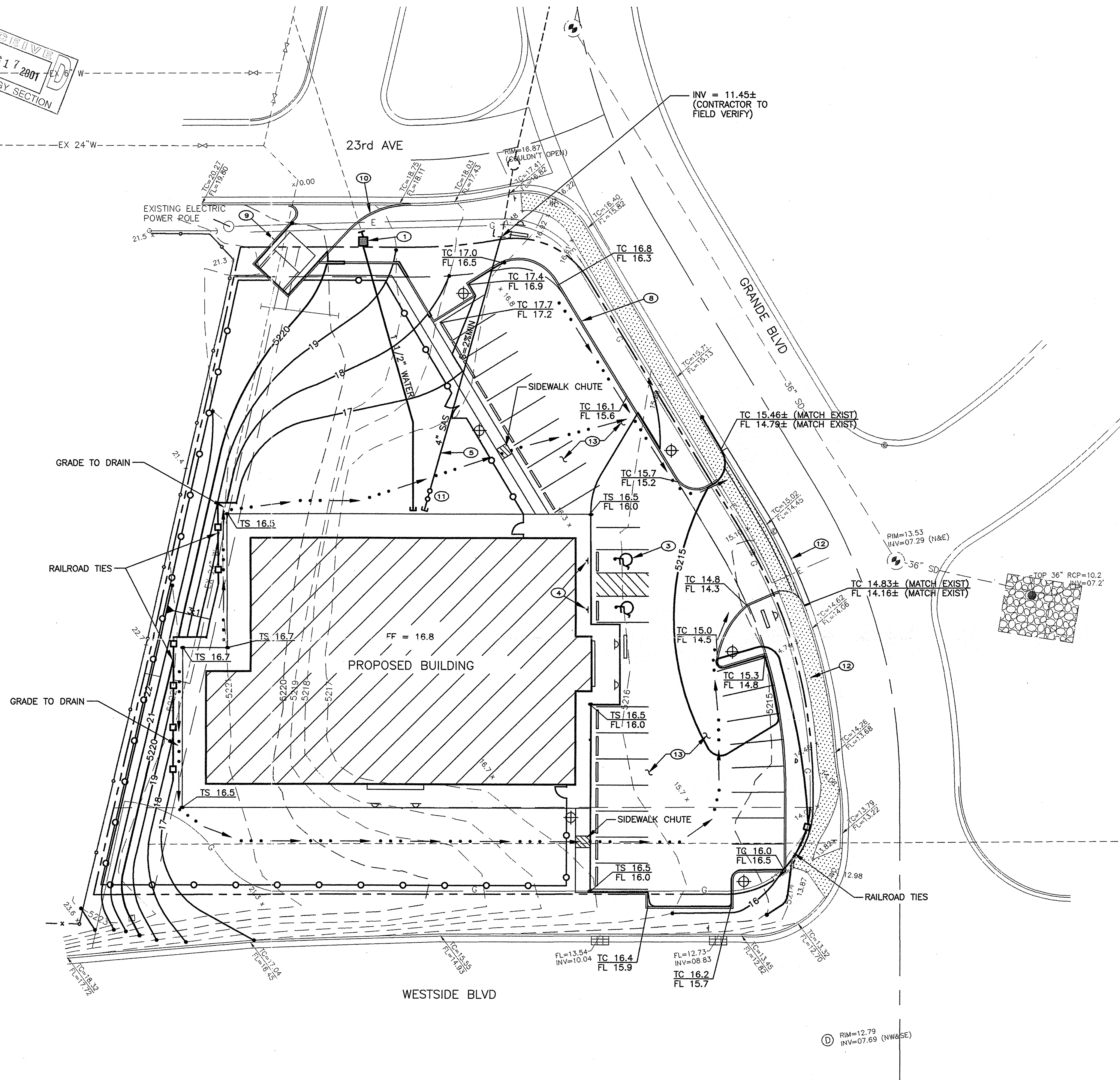


RECEIVED
AUG 17 2001
HYDROLOGY SECTION



CONSTRUCTION NOTES:

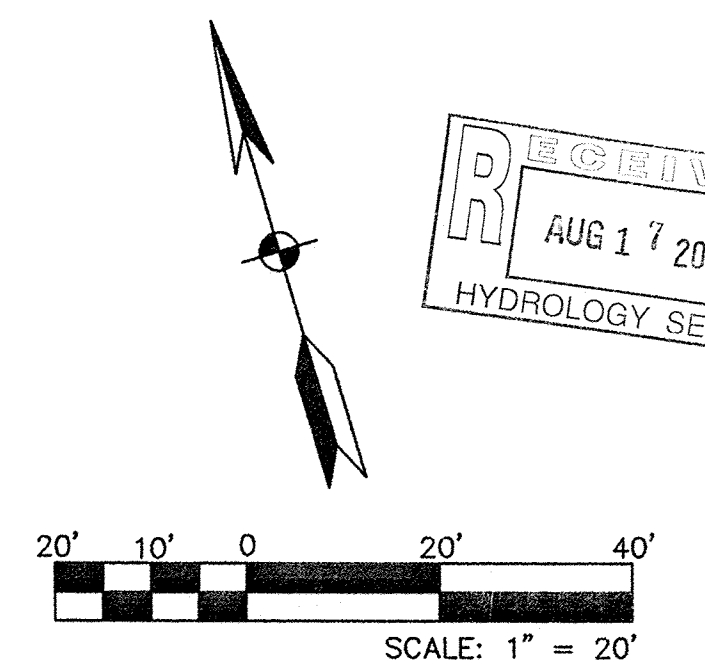
- NEW 1 1/2" DOMESTIC WATER AND METER SEE SHEET 3 OF 3 FOR METER BOX DETAIL. (BY OTHERS, METER COST & TAP FEE BY CONTRACTOR)
- NEW TELEPHONE SERVICE (BY OTHERS)
- HANDICAP SYMBOL PAINTED ON PAVEMENT PER CITY OF RIO RANCHO
- HANDICAP PARKING SIGN PER CITY OF RIO RANCHO SPECIFICATIONS
- NEW 4" SANITARY SEWER SERVICE LATERAL
- PLUMBING CONTRACTOR SHALL PROVIDE NEW GAS SERVICE FROM NEW METER (BY OTHERS)
- NEW PRIMARY ELECTRICAL SERVICE, (BY OTHERS)
- CONSTRUCT 6" CONCRETE HEADER CURB (SEE RIO RANCHO S.T.D. DETAIL SHT. 2)
- CONSTRUCT MASONRY TRASH ENCLOSURE. (SEE ARCHITECTS DRAWINGS)
- CONSTRUCT CURB & GUTTER PER CITY OF RIO RANCHO STANDARDS (SEE DETAIL, SHT. 3 OF 3).
- INSTALL CLEANOUT (TYP.) PER UNIFORM PLUMBING CODE.
- CONSTRUCT ENTRY AND VALLEY GUTTER PER CITY OF RIO RANCHO STANDARDS (SEE DETAIL, SHT. 3 OF 3).
- CONSTRUCT TYPICAL PAVEMENT SECTION 3" A.C. OVER 6" A.B. PER DRIVEWAY PAVEMENT SECTION (SEE DETAIL SHEET).

LEGEND

FF=16.8	PROPOSED FINISH FLOOR ELEVATION
FL=14.21	PROPOSED FLOW LINE ELEVATION
TC=98.43	PROPOSED TOP OF CURB ELEVATION
TS	TOP OF SIDEWALK
99.0	PROPOSED SPOT ELEVATION
	PROPOSED CONCRETE VALLEY GUTTER
	PROPOSED 6" CURB AND GUTTER
	SWALE / FLOW ARROW
X 5050.09	EXISTING SPOT ELEVATION
	WM WATER METER

GENERAL NOTES:

- CONTRACTOR TO COORDINATE UTILITY TIES WITH APPROPRIATE PROVIDERS AND MECHANICAL DRAWINGS.



RECEIVED
AUG 17 2001
HYDROLOGY SECTION

ENGINEER'S SEAL		Springstone - Grande Children's Learning Center GRADING / DRAINAGE AND UTILITY PLAN	
	DATE:	6/2001	
	SCALE:	AS SHOWN	
	DESIGNED:	REH/PJM	
	DRAWN:	REH/PJM	
CHECKED:	REH/PJM	LAND PLANNING P.O. Box 1328 Corrales, N.M. 87048	SHEET 2 3