

NOTES

- 1) DIMENSIONS ARE TO FACE OF CURB UNLESS NOTED OTHERWISE
- 2) PARKING SPACE STRIPE SHALL BE 18' IN LENGTH UNLESS NOTED OTHERWISE

GEOMETRY PLAN

DATE: DEC. 1997

SCALE: 1"=20'

DESIGNED: KMW

DRAWN:	SPS
JOB NO.:	

455-02-041

*community
sciences
corporation*

LAND PLANNING ENGINEERING SURVEYING
P.O. Box 1328 Corrales, N.M. 87048

SHEET

C1 ✓

1 /

OF

C.

CITY OF RIO RANCHO
City Engineer
Jerry Fossiner
3900 Southern Blvd.
Rio Rancho, NM 87124
(505) 891-7208

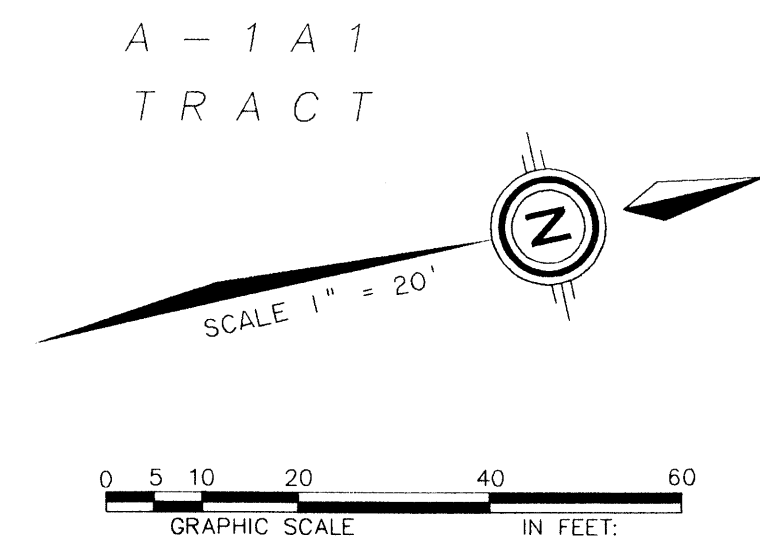
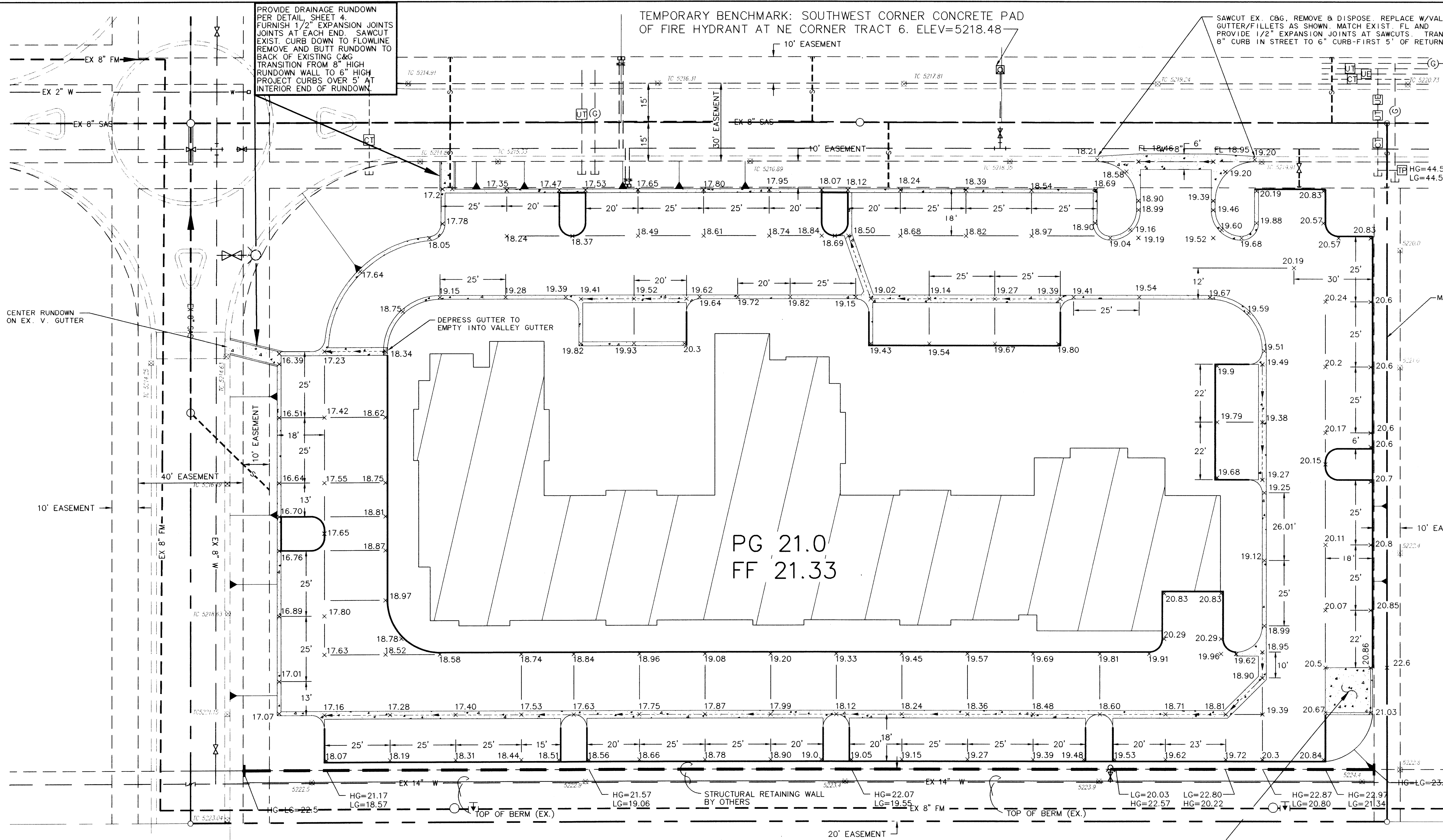
CITY OF RIO RANCHO
Department of Water
and Wastewater Services
Becky Edwards
4100 Southern Blvd.
Rio Rancho, NM 87124
(505) 891-1200

PNM Electrical Services
Jerry Duran
385 Sr. 44
Bernalillo, NM 87004
(505) 848-3408

PNM Gas Services
Leo apodaca
P.O. Box 1696
Albuquerque, NM 87103
(505) 761-7770

US WEST COMMUNICATIONS
Al Salas
201 third Street
P.O. Box 1355, Sta. 952
Albuquerque, NM 87103
(505) 245-8530

S CABLE ONE
Pat Jackson
1117 Rio Rancho Blvd S.E.
Rio Rancho, NM 87124
(505) 892-5114



*APPROXIMATE EARTH MOVING QUANTITIES

UNADJUSTED CUT	2600 CY
FILL (ADJUSTED FOR 10% SHRINKAGE)	750 CY
EXPORT AND DISPOSAL	1850 CY



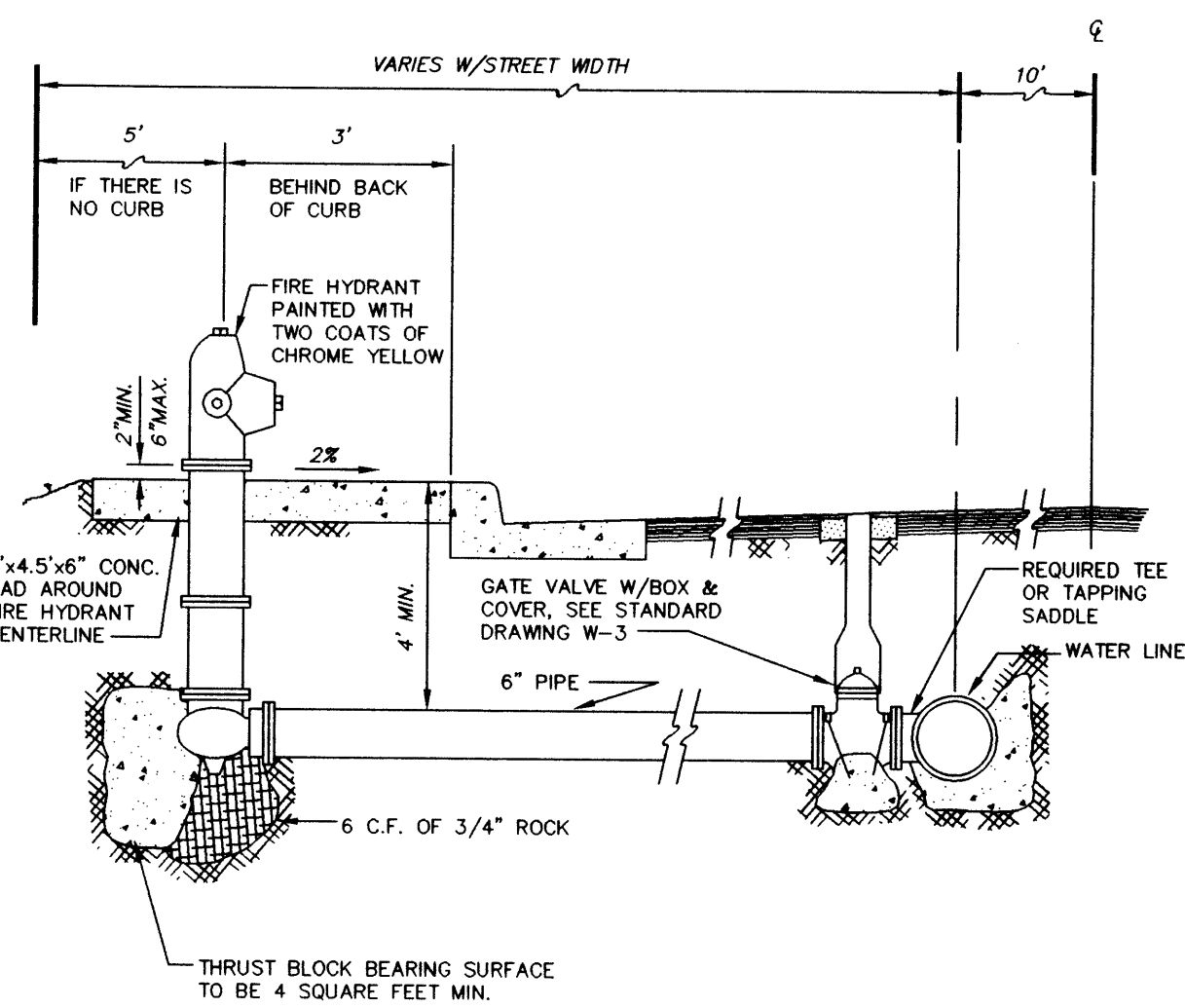
1/12/98

HOMEGATE STUDIOS
CITY OF RIO RANCHO, NEW MEXICO

GRADING & PAVING PLAN

DATE: DEC. 1997
SCALE: 1"=20'
DESIGNED: KMW
DRAWN: SPS
JOB NO.: 455-02-042
LAND PLANNING: P.O. Box 1328
ENGINEERING: Corrales, N.M. 87048
SURVEYING: Corrales, N.M. 87048

SHEET
C2
C4



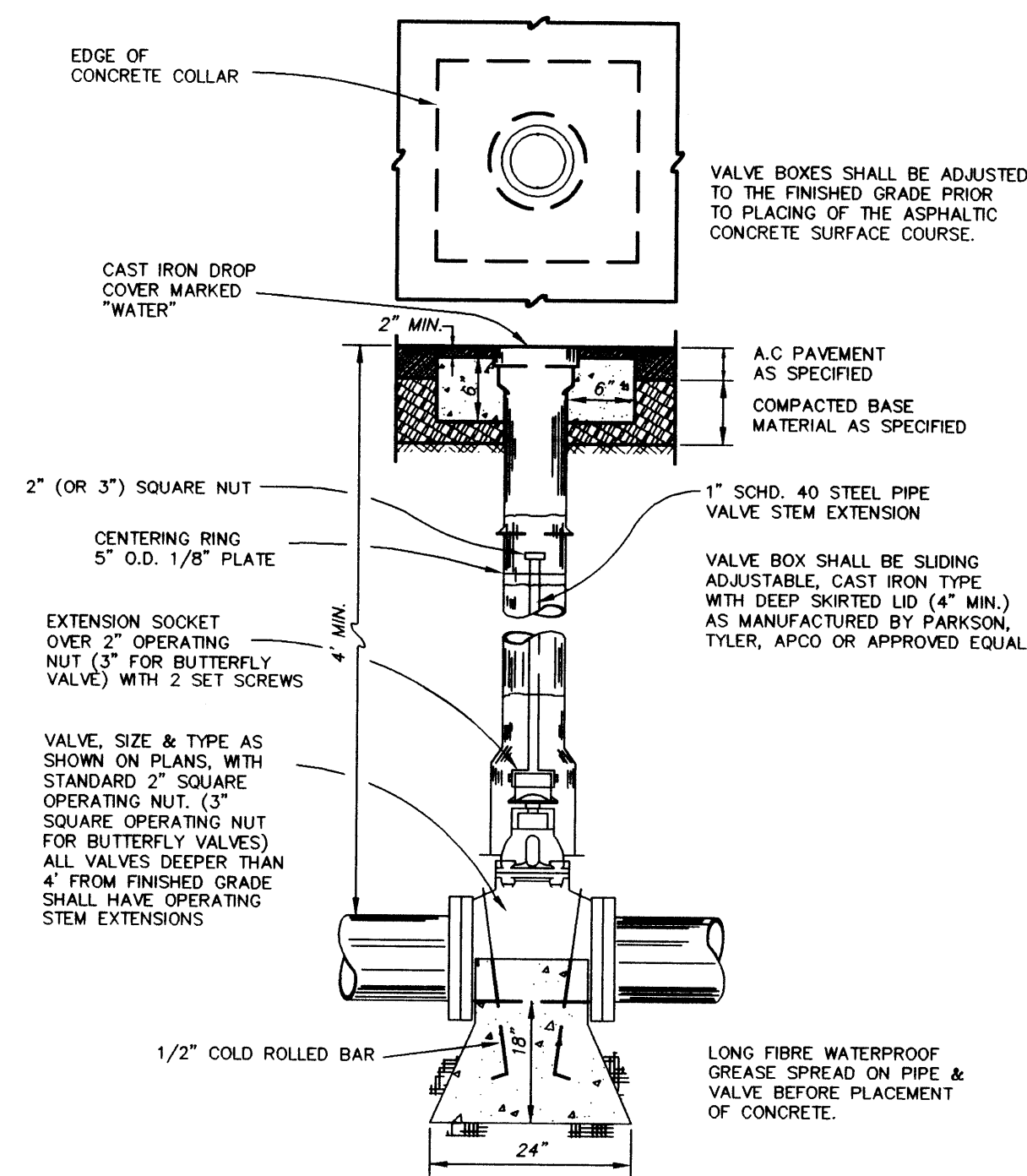
- NOTES:
- 1 GATE VALVE W/BOX & COVER SHALL BE INSTALLED ON NEW AND EXISTING WATER MAINS.
- 2 ALL VALVES SHALL HAVE 5 1/4" VALVE OPENING, DRY BARREL, DRY TOP, TRAFFIC MODEL WITH ONE 4 1/2" PUMPER NOZZLE, TWO 2 1/2" HOSE NOZZLES, NIS THREAD, PENTAGON OPERATING NUT (1 1/22" POINT TO FLAT) WITH 1" SIDES, WHICH SHALL OPEN LEFT (COUNTER CLOCKWISE), WITH MECHANICAL JAW OPENING TO 6" SPECIFIED PVC PIPE WITH 4" MIN. COVER.
- 3 THE FIRE HYDRANT SHALL BE PAINTED WITH TWO COATS OF CHROME YELLOW, AND MEET REQUIREMENTS OF AWWA C502.
- 4 SPRINKLER HYDRANTS INCLUDE 1" GUARDIAN MODEL K - 81, US PIPE METRO 250, AND MUELLER SUPER CENTURION 200.

City of Rio Rancho Utilities Department (Water and Wastewater Divisions)

FIRE HYDRANT ASSEMBLY

STANDARD DRAWING W-2

Note: This Standard Drawing
only is more current.
approved Standard does not exist

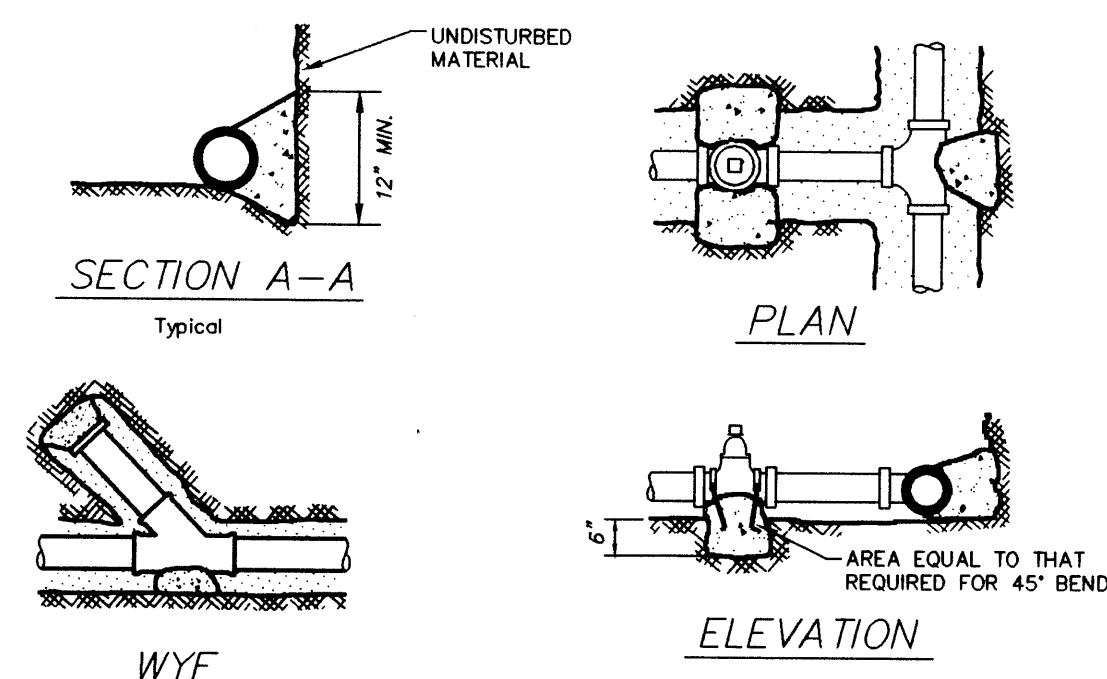


City of Rio Rancho Utilities Department (Water and Wastewater Divisions)

VALVE BOX ASSEMBLY

Standard Drawing is
in more copies.
Standard does not exist.

STANDARD DRAWING W-3



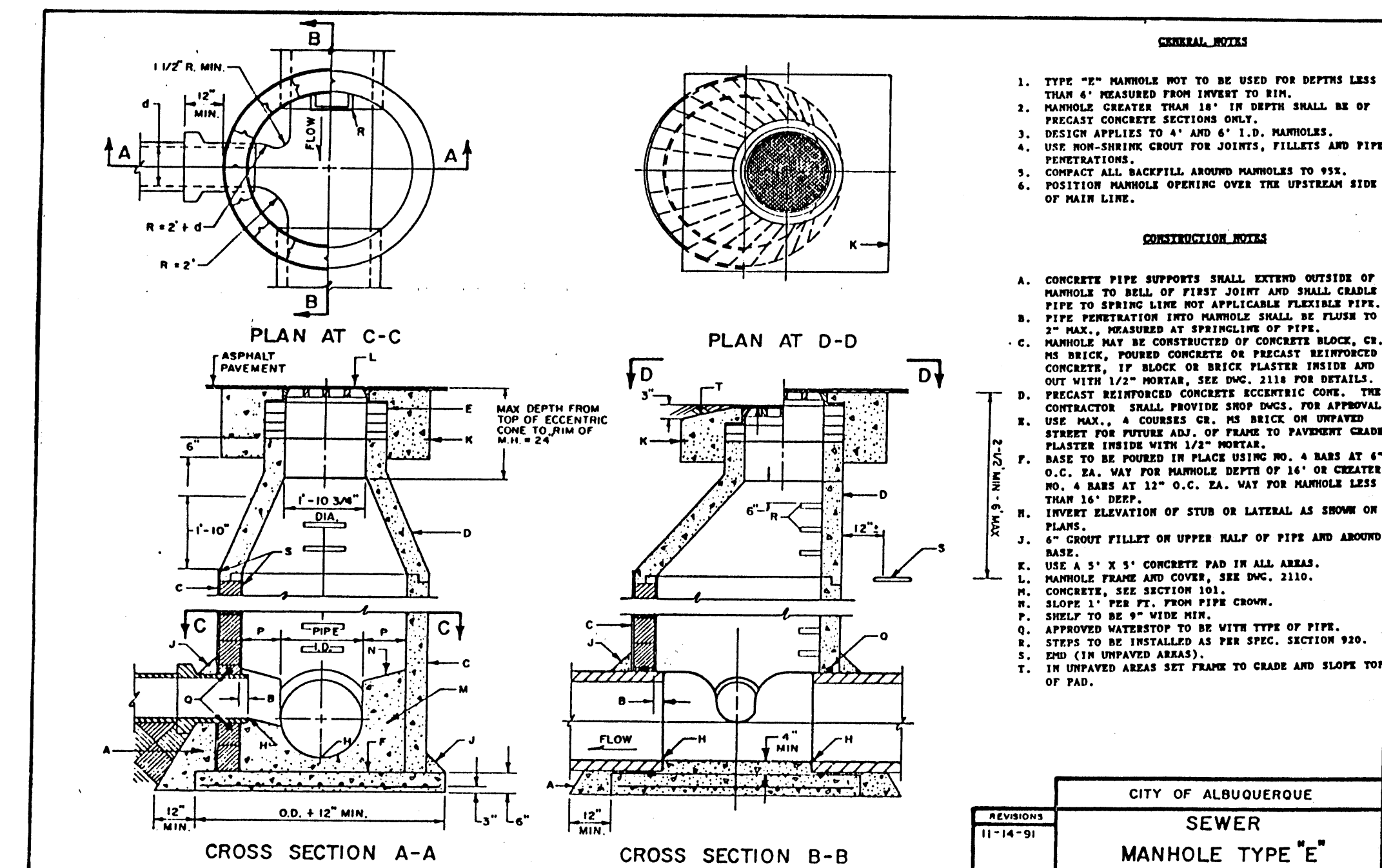
- NOTES:

BEARING AREAS

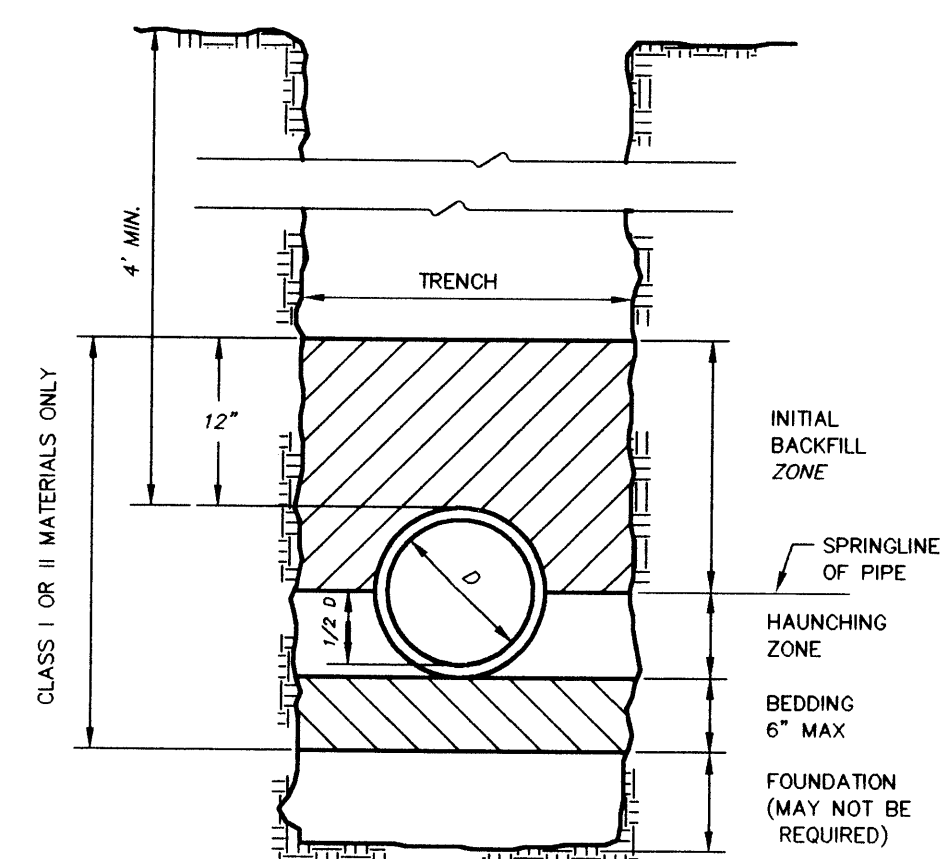
(SQUARE FEET)

PIPE SIZE	TEE, DEAD END OR 90° BEND	45° OR 22° BEND
4" AND LESS	3	3
6"	4	3
8"	6	3
10"	9	5
12"	13	7
14"	23	12
16" AND LARGER	AS PRESCRIBED BY ENGINEER	

City of Rio Rancho Utilities Department (Water and Wastewater Divisions)	
<div style="display: flex; justify-content: space-between;"> <div> DATE: 1/91 REV: 10/96 </div> <div> Note: This Standard Drawing is valid only if it is used with approved Standard does not exist </div> </div>	
<h1>CONCRETE THRUST BLOCKS</h1> <h2>STANDARD DRAWING W-5</h2>	

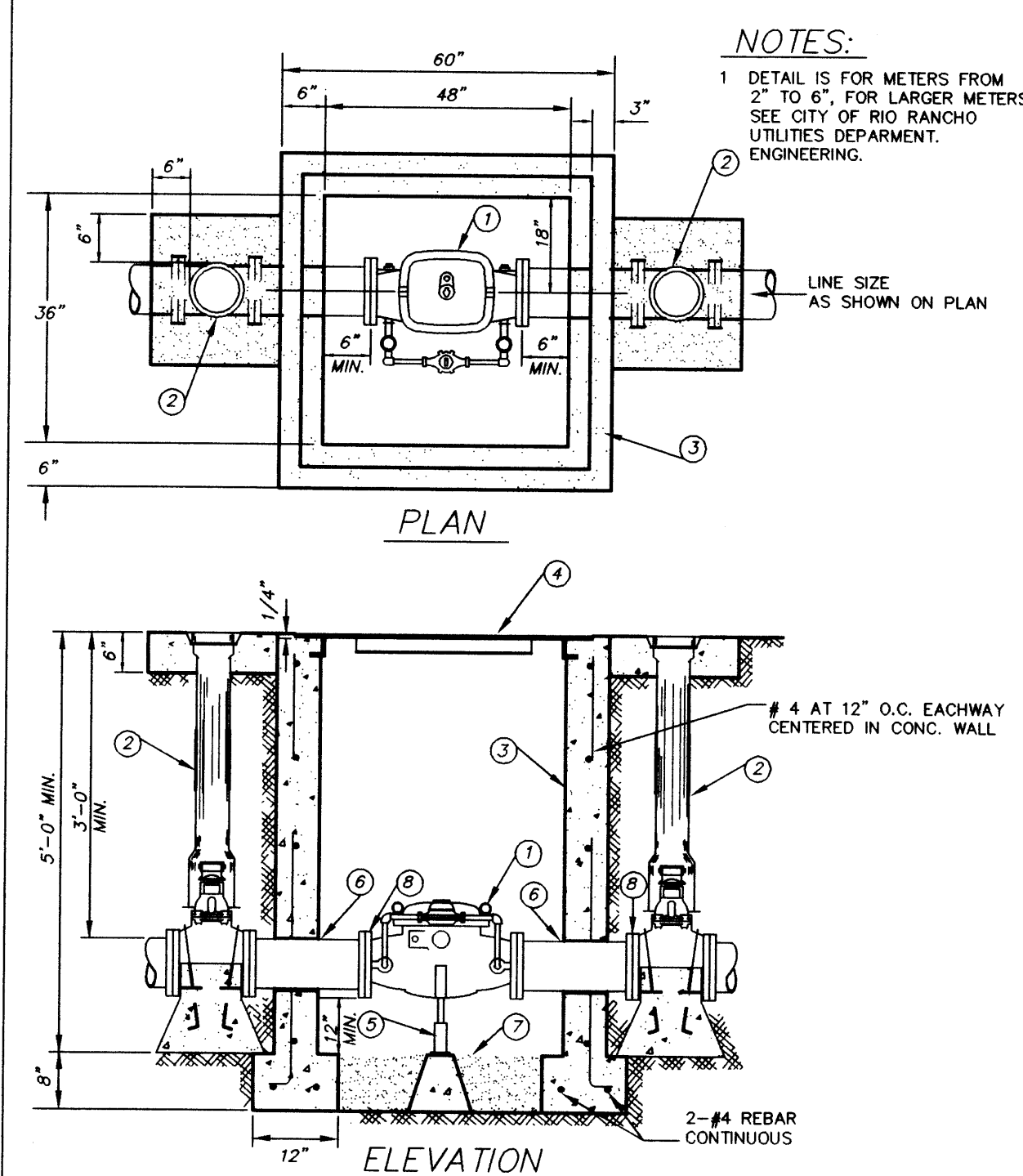


REVISIONS 11-14-91	CITY OF ALBUQUERQUE
	SEWER MANHOLE TYPE "E" DWG. 2102
	AUG. 1986



- NOTES:
- ¹ BEDDING MATERIALS SHALL BE CLASSED AS DEFINED IN ASTM D-2321

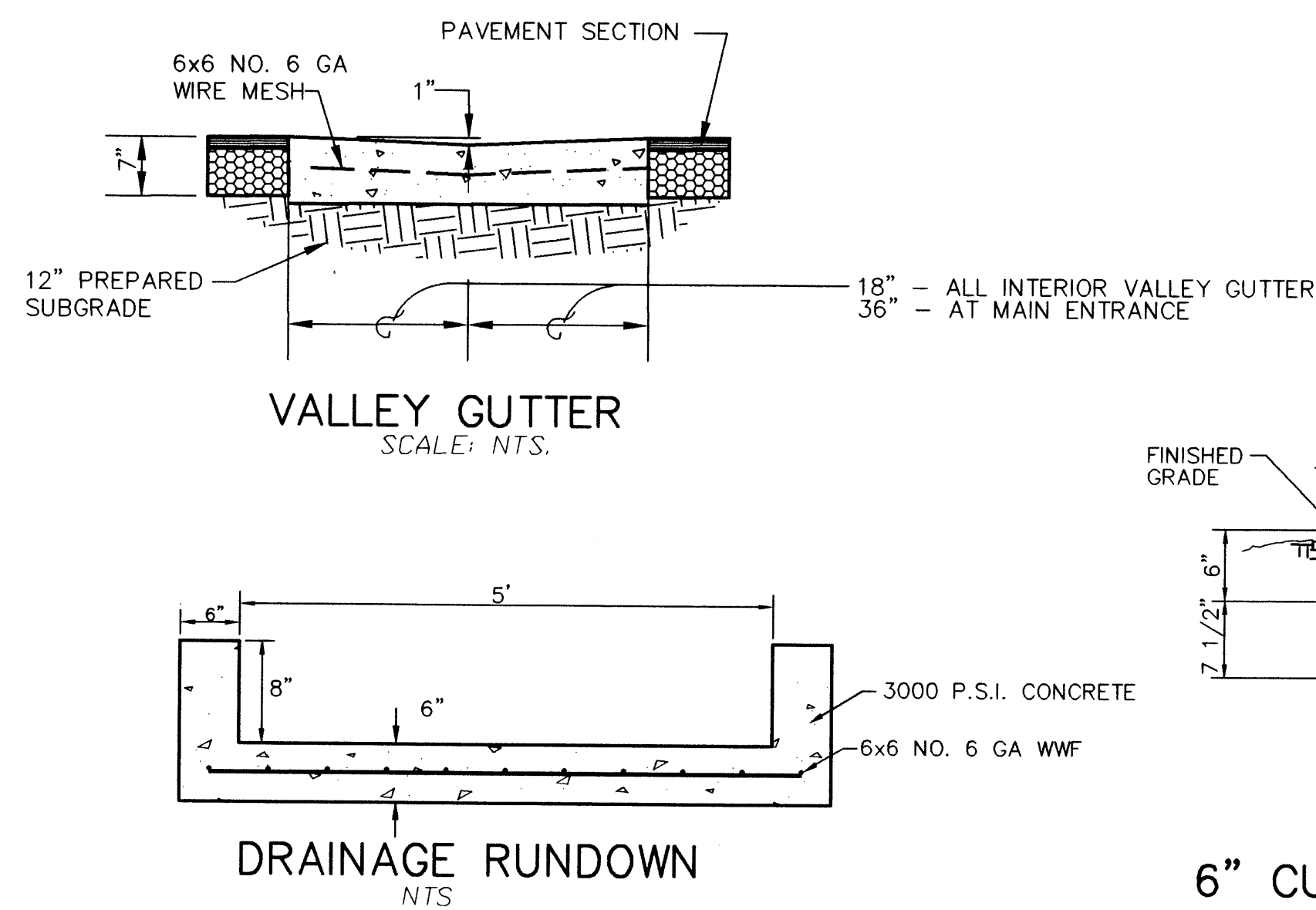
City of Rio Rancho Utilities Department (Water and Wastewater Divisions)	
<h1 style="text-align: center;">PIPE BEDDING</h1>	
DATE: JAN. 1991 REV.: JAN. 1996	Note: This Standard Drawing is held only in one format, approved/Standard does not exist. <h2 style="text-align: center;">STANDARD DRAWING W-6</h2>



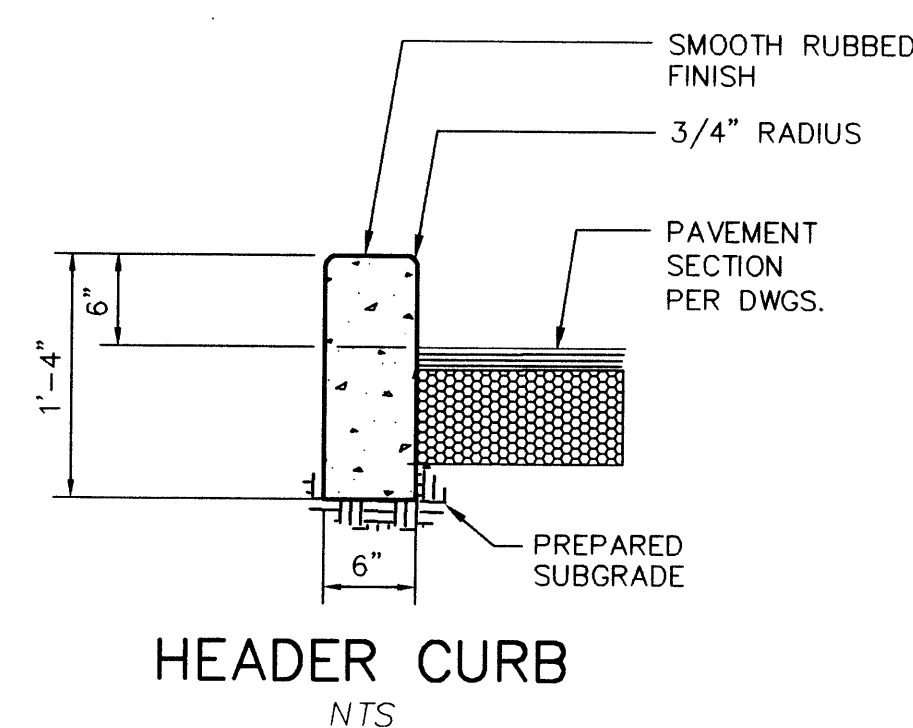
- KEY NOTES:

- 1 WATER METER (TYPICALLY PROVIDED BY CITY IF RIO RANCHO UTILITIES DEPARTMENT)
- 2 GATE VALVE W/BOX & COVER PER STANDARD DRAWING W-3
- 3 PRE-CAST OR POURED IN PLACE CONCRETE VAULT, 3000 PSI
- 4 ALUMINUM ACCESS DOOR, HALLIDAY PRODUCTS SERIES SIR OR APPROVED EQUAL
- 5 ADJUSTABLE PIPE SLOPE STAND AND FOUNDATION OR BLOCKING AT METER CONNECTIONS
- 6 NON-SHRINKING GROUT
- 7 CLEAN PEA GRAVEL
- 8 UNIFLANGE

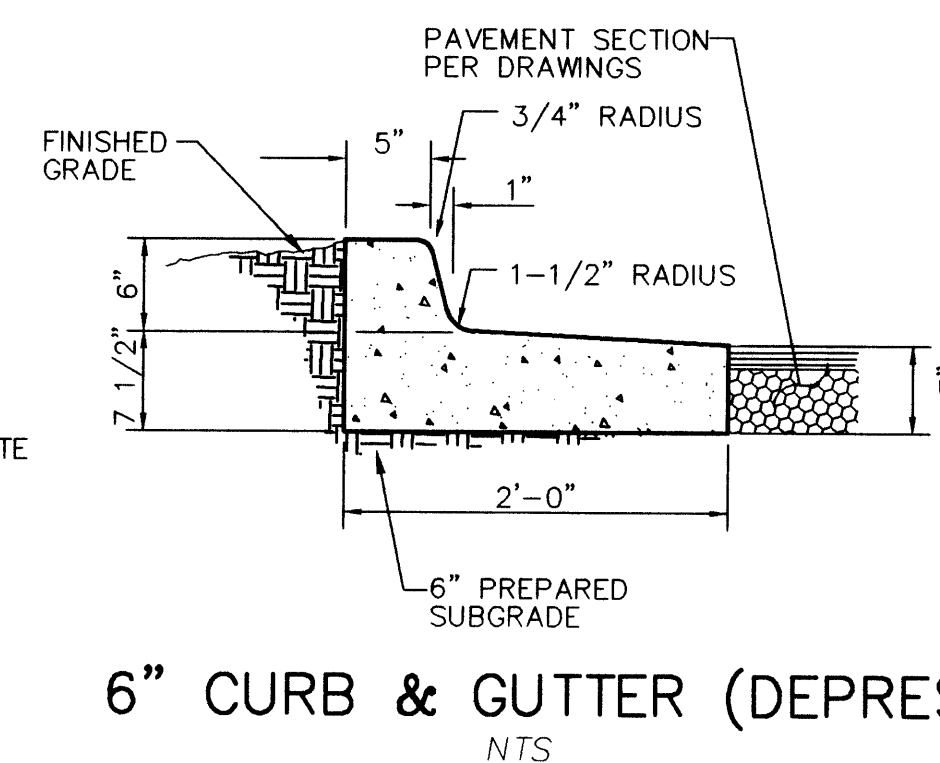
City of Rio Rancho Utilities Department (Water and Wastewater Divisions)	
METER INSTALLATIONS, 2" - 6"	
DATE: JAN. 1996 REV.: JAN. 1997	Note: This Standard Drawing is valid only if it is correctly approved. Standard does not subd. STANDARD DRAWING W-8



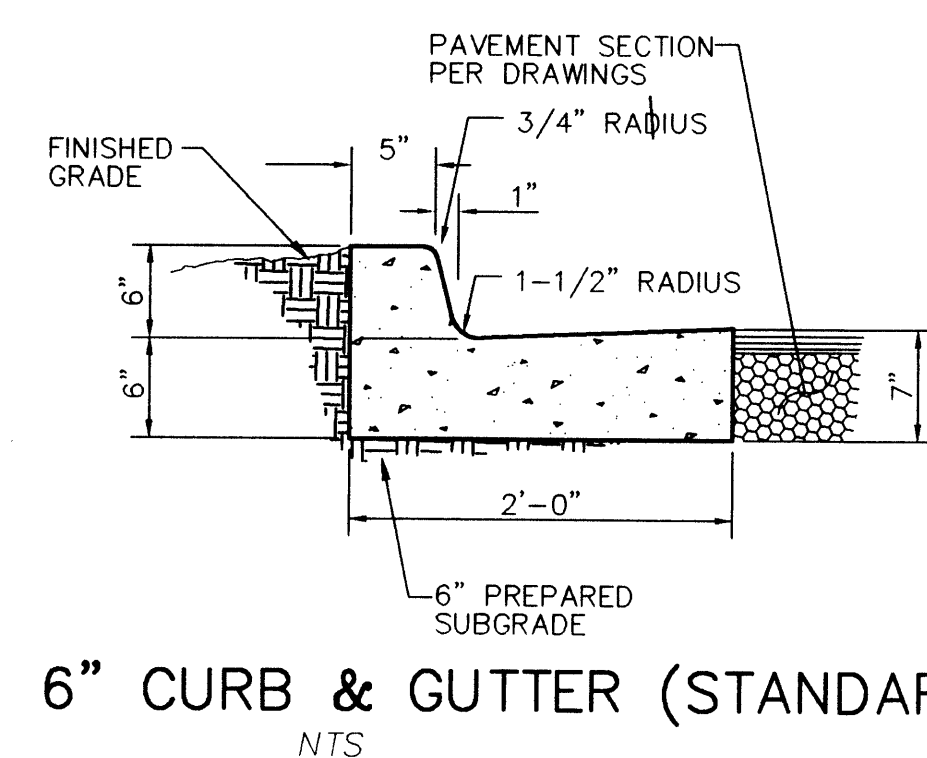
DRAINAGE RUNDOWN



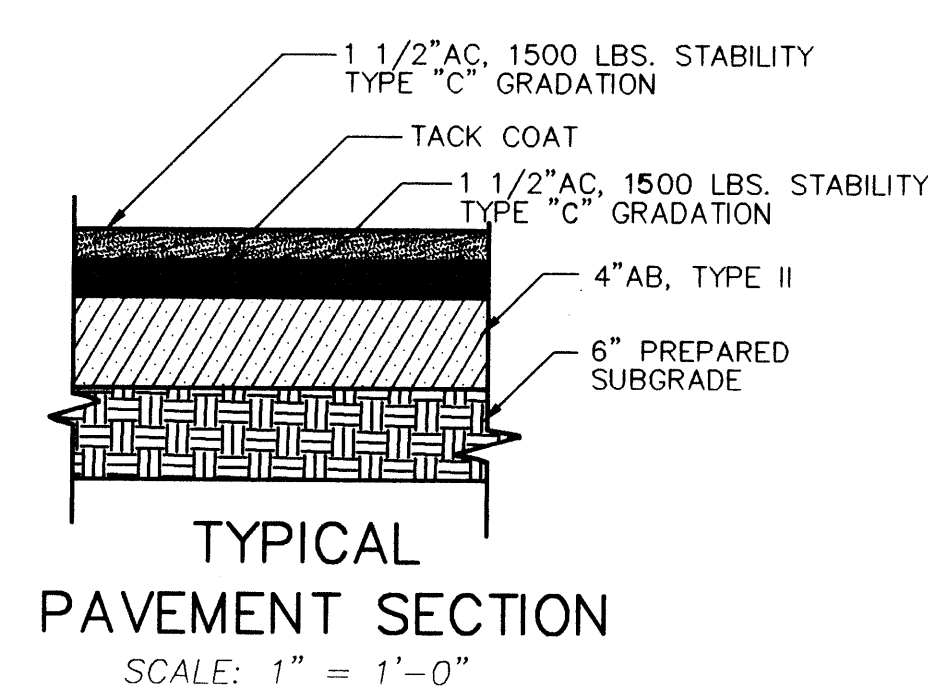
HEADER CURB
NTS



6" CURB & GUTTER (DEPRESSED)
NTS



6" CURB & GUTTER (STANDARD)
NTS



TYPICAL
PAVEMENT SECTION
SCALE: 1" = 1'-0"

REVISED		DESCRIPTION		BY	
NO.	DATE	1			
2					
3					
4					

HOMEGATE STUDIOS

CITY OF RIO RANCHO, NEW MEXICO

DETAILS

DATE: DEC, 1997 SCALE: AS SHOWN DESIGNED: KMM/ DRAWN: SPS	<i>community sciences corporation</i>	SHEET <div style="font-size: 2em; font-weight: bold;">C4</div> <div style="font-size: 0.8em;">OF</div> <div style="font-size: 2em; font-weight: bold;">C4</div>
JOB NO: 455-02-013	LAND PLANNING P.O. Box 1328	ENGINEERING SURVEYING Corrales, N.M. 87048

The seal is a circular stamp for Kent M. Whitman, a Registered Professional Engineer in New Mexico. The outer ring contains the text "KENT M. WHITMAN" at the top and "REGISTERED PROFESSIONAL ENGINEER" at the bottom. The inner circle contains "NEW MEXICO" at the top and "8110" at the bottom. A handwritten signature "Kent M. Whitman" is written across the seal, and the date "11/12" is written to the right.

11/12/98

45502C4.DWG REV. 1/12/98 DLW