



Martin J. Chávez, Mayor

October 20, 1997

Mark Goodwin
D. Mark Goodwin & Associates
P.O. Box 90606
Albuquerque, New Mexico 87199

RE: ENGINEER CERTIFICATION FOR DISCOUNT TIRE CO. (A14-D3) ENGINEER'S
CERTIFICATION STATEMENT DATED 10/15/97

Dear Mr. Goodwin:

Based on the information provided on your October 17, 1997 submittal, Engineer Certification for the above referenced site is acceptable.

Please be advised that the permanent Certificate of Occupancy release will not be issued until the following concerns have been addressed:

1. State Highway Concurrence for work done within their R/W.
2. Copy of the finalized recorded Agreement & Covenant.

If I can be of further assistance, please feel free to contact me at 924-3986.

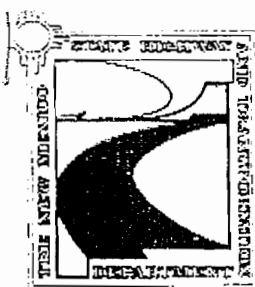
C: Andrew Garcia
File

Sincerely

Bernie J. Montoya CE
Associate Engineer

Good for You, Albuquerque!





NEW MEXICO STATE HIGHWAY
AND TRANSPORTATION DEPARTMENT
AN EQUAL OPPORTUNITY EMPLOYER

GARY E. JOHNSON
GOVERNOR

COMMISSION

Holm Bureau, III
Chairman, Socorro

Edward T. Begay
Vice-Chairman, Gallup

Peter T. Mocho, Sr.
Secretary, Albuquerque

Sherry Galloway
Member, Farmington

Albert N. Sanchez
Member, Santa Rosa

Sidney G. Strebeck
Member, Portales

DEPARTMENT

Secretary
Pete K. Rahn

General Office
P.O. Box 1149
Santa Fe, NM
87504-1149
505-827-5100

District One Office
P.O. Box 231
Deming, NM
88031-0231
505-646-2803

District Two Office
P.O. Box 1457
Roswell, NM
88202-1457
505-624-3300

District Three Office
P.O. Box 91750
Albuquerque, NM
87198-1750
505-941-2700

District Four Office
P.O. Box 30
Las Vegas, NM
87701-0030
505-464-3600

District Five Office
P.O. Box 4127
Coronado Station
Santa Fe, NM
87502-4127
505-827-9500

District Six Office
P.O. Box 2158
Milen, NM
87021
505-285-3200

November 12, 1997

Mr. Roger Martinez, Jr.
Project Engineer
Mark Goodwin & Associates, PA
P.O. Box 90606
Albuquerque, New Mexico 87199

Dear Mr. Martinez:

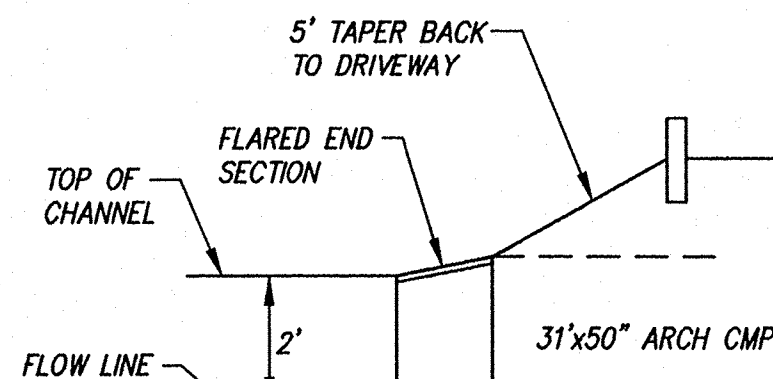
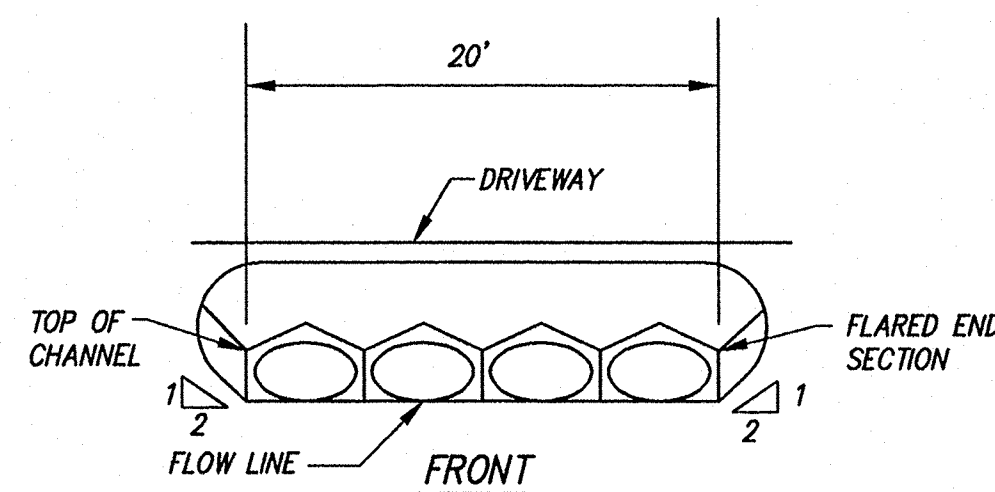
This is to inform you that the Drainage Improvements on N.M. 528,
Deceleration Lane Project is acceptable and therefore approved.

If you have any questions or need additional information, please call me at
827-5323.

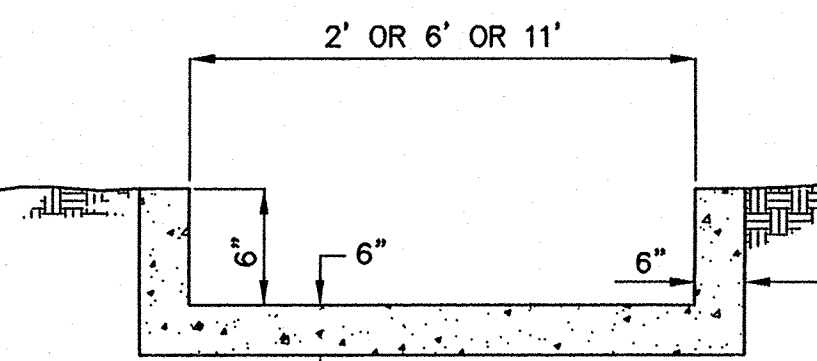
Sincerely,

Raymunda Van Hoven
Raymunda Van Hoven
Drainage Engineer

cc: George Herrera
Kathy Trujillo

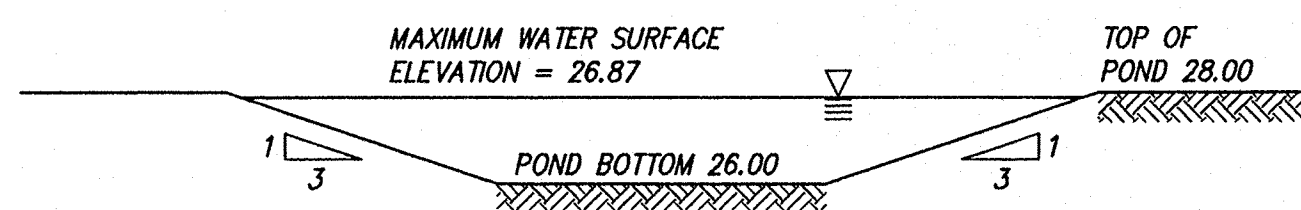


HEADWALL TYPICAL DETAIL
NOT TO SCALE

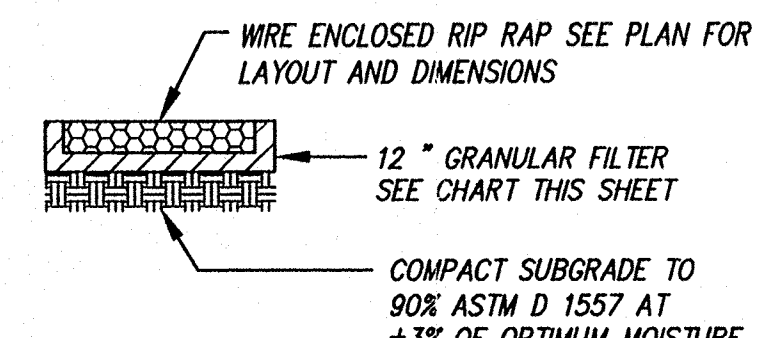
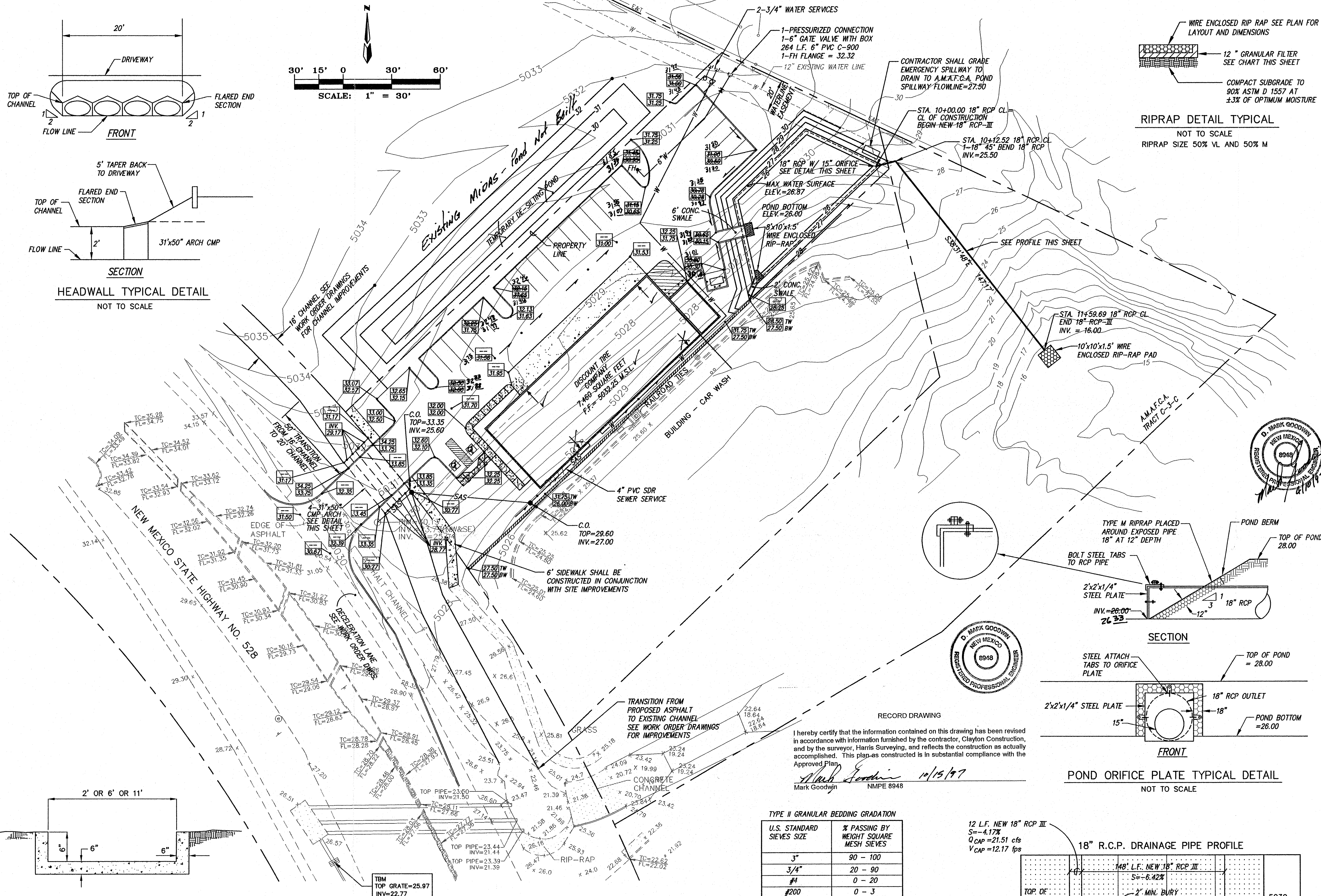
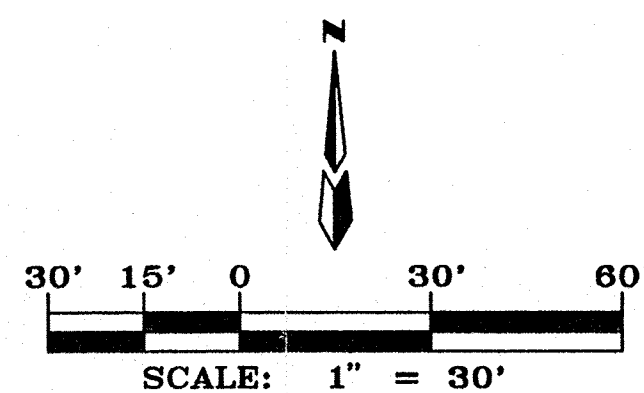


CONCRETE SWALE EMERGENCY SPILLWAY DETAIL
NOT TO SCALE

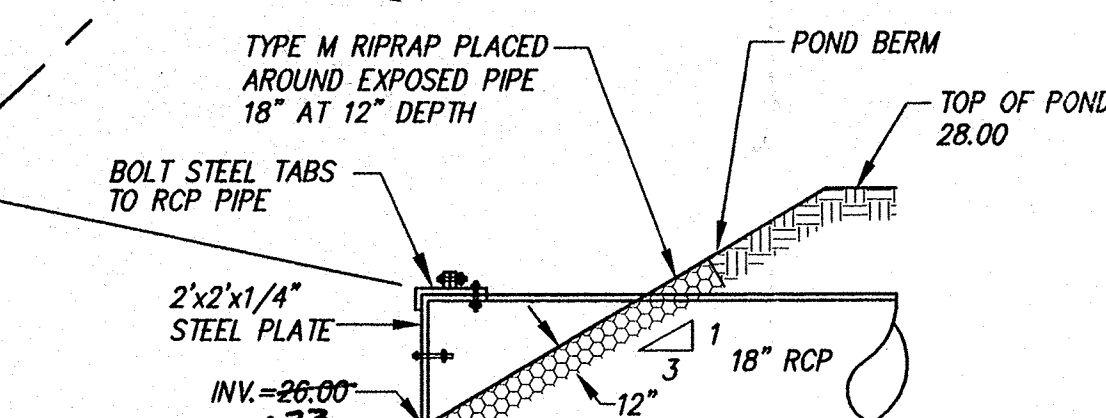
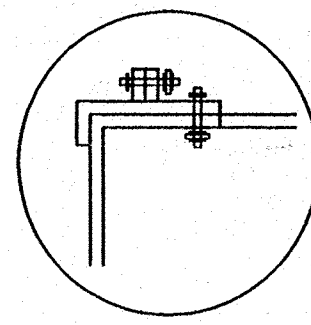
EMERGENCY SPILLWAY FLOWLINE ELEV.=27.50'
REINFORCING - #4's AT 12" E.W.



POND DETAIL
NOT TO SCALE



RIPRAP DETAIL TYPICAL
NOT TO SCALE
RIPRAP SIZE 50% VL AND 50% M

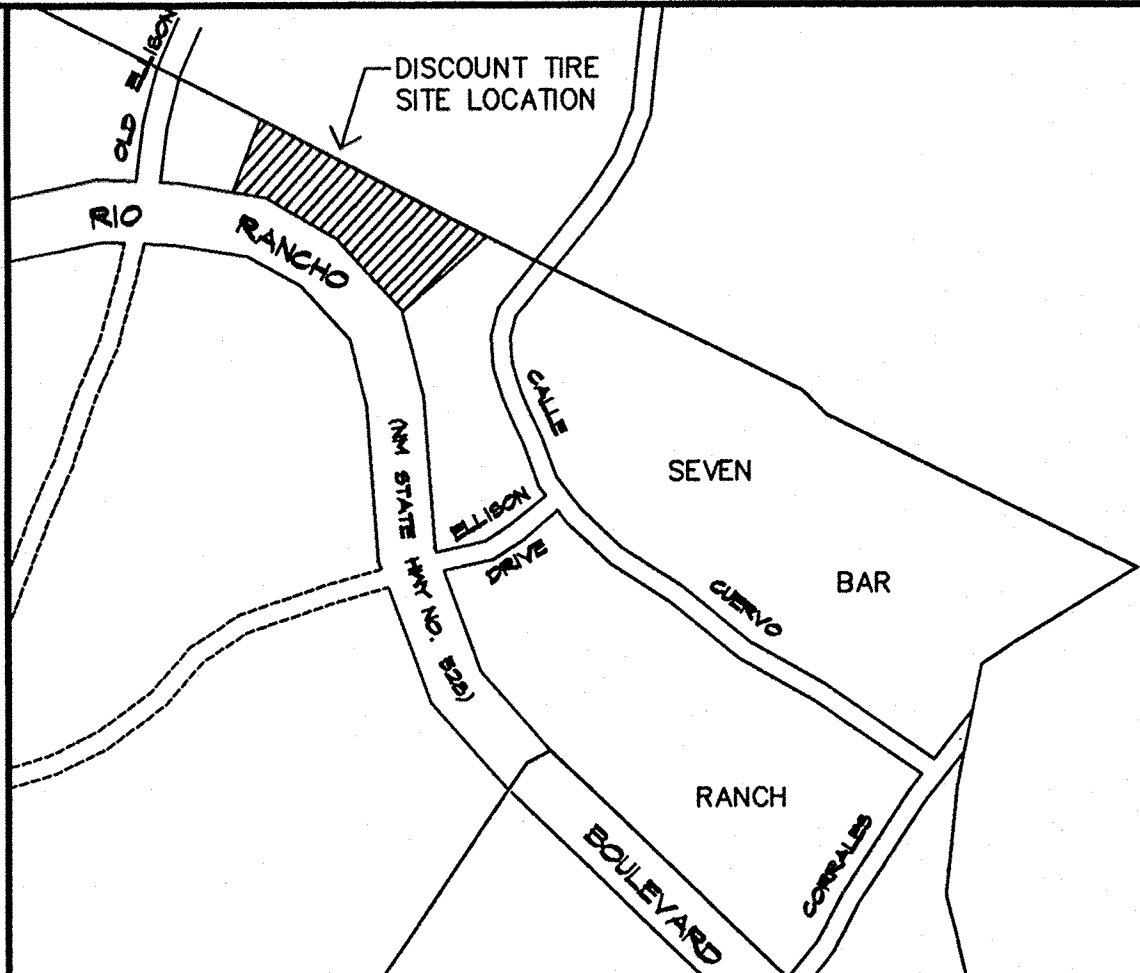
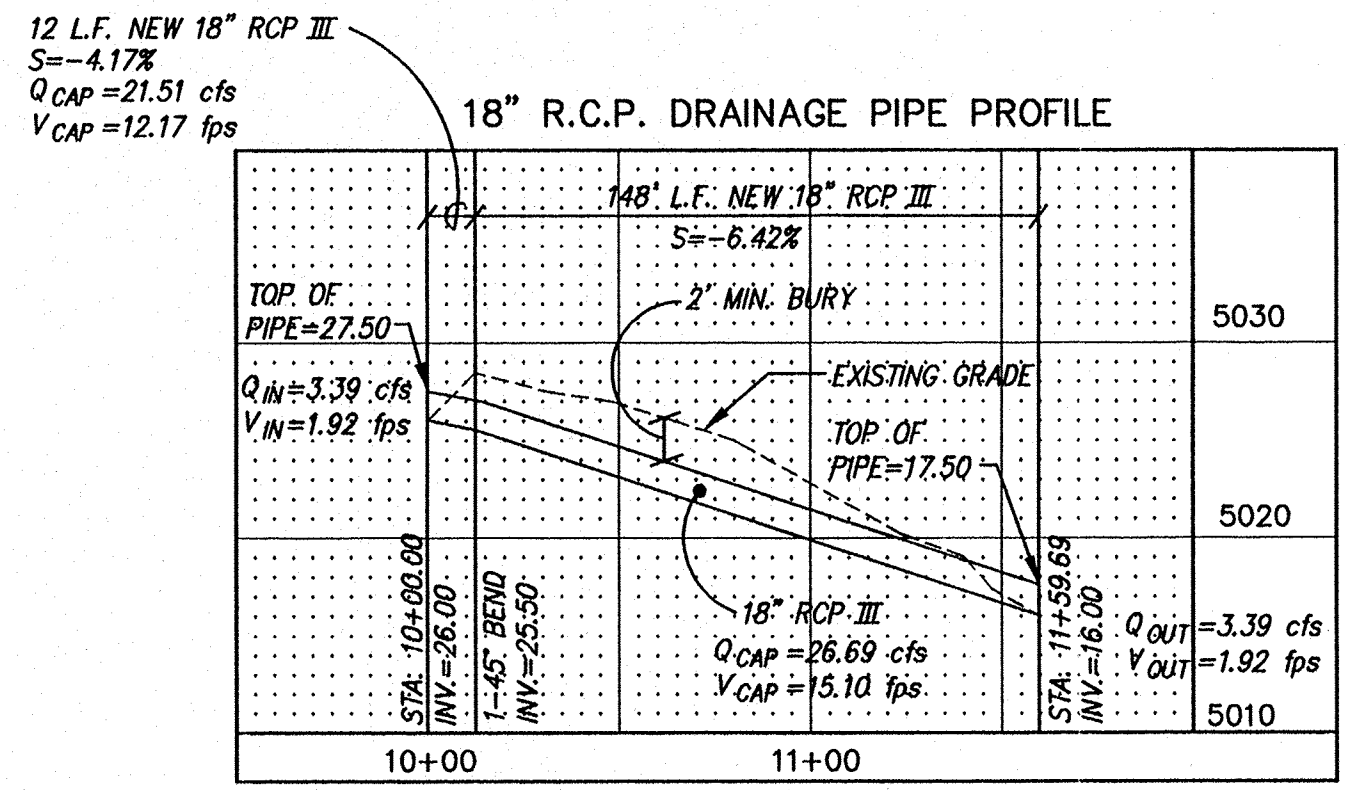


POND ORIFICE PLATE TYPICAL DETAIL
NOT TO SCALE

I hereby certify that the information contained on this drawing has been revised in accordance with information furnished by the contractor, Clayton Construction, and by the surveyor, Harris Surveying, and reflects the construction as actually accomplished. This plan as constructed is in substantial compliance with the Approved Plan.
Mark Goodwin 11/15/97
Mark Goodwin NMPE 8948

U.S. STANDARD SIEVES SIZE	% PASSING BY WEIGHT SQUARE MESH SIEVES
3"	90 - 100
3/4"	20 - 90
#4	0 - 20
#200	0 - 3

RIPRAP DESIGNATION	% SMALLER THAN GIVEN SIZE BY WEIGHT	INTERMEDIATE ROCK DIMENSION (INCHES)	MEAN PARTIAL SIZE (INCHES)
TYPE VL	70 - 100	12	6
"	50 - 70	9	"
"	35 - 50	6	"
TYPE VL	2 - 10	2	6



VICINITY MAP ZONE MAP: A-14-Z

ACS BENCHMARK
STATION MARK IS A STANDARD NMHC BRASS TABLET, STAMPED "NM448-N12", SET IN TOP OF A CONCRETE TABLET, PROJECTING 0.3 FT. ABOVE GROUND.
TO REACH THE STATION FROM THE INTERSECTION OF STATE ROAD 448 AND CENTRAL AVE., GO NORTH ON STATE ROAD 448, 9.30 MILES TO MOUNTAIN BELL TELE. SUB-STATION AND STATION ON LEFT (WEST).
X= 381,108.54 Y= 1,528,910.94 Z= 5023.411

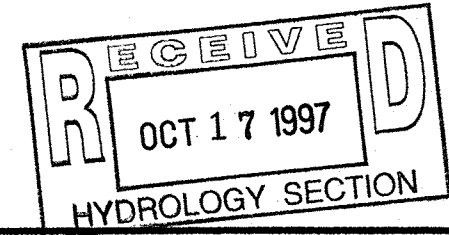
LEGAL DESCRIPTION
A PORTION OF TRACT C-3-A, SEVEN BAR RANCH

- NOTES
1. SITE DOES NOT LIE WITHIN A 100 YEAR FLOOD ZONE.
 2. CONTRACTOR SHALL CONSTRUCT TEMPORARY 12" HIGH EARTHEN BERM ALONG EAST BOUNDARY TO PREVENT SEDIMENTATION DOWNSTREAM.
 3. CONTRACTOR SHALL CONTACT A.M.A.F.C.A. 48 HOURS PRIOR TO 18" RCP CONSTRUCTION.
 4. OWNER AGREES TO CONSTRUCT AND MAINTAIN POND, PIPE, AND OUTFALL TO INCLUDE RIPRAP PER THE DRAINAGE COVENANT WITH THE CITY OF ALBUQUERQUE.

TBM (TEMPORARY BENCHMARK)
TOP OF GRATE ELEV.=25.97 AT SOUTHWEST RIGHT OF WAY ON NEW MEXICO STATE HIGHWAY NO. 528

AMAFCA 4-14-97
AMAFCA DATE

- LEGEND
- PROPERTY LINE
 - ROOF ARROW, (TYP)
 - FLOW ARROW, (TYP)
 - 10.20 15.50/16.50/17.50 PROPOSED SPOT ELEVATION
 - 5050 CONTOUR (MAJOR)
 - 5051 CONTOUR (MINOR)
 - TC= FL= TOP OF CURB ELEVATION FLOWLINE ELEVATION
 - 0.00 X SPOT ELEVATION
 - == CURB AND GUTTER



DISCOUNT TIRE CO. - N.M. 528
GRADING, DRAINAGE AND UTILITY PLAN

dmg D. MARK GOODWIN & ASSOCIATES, P.A.
CONSULTING ENGINEERS & SURVEYORS
P.O. BOX 90606
ALBUQUERQUE, NEW MEXICO 87199
(505) 345-2010

Designed: DMG Drawn: MCG, WLV Checked: DMG Sheet 003 of 4
Scale: 1" = 30' Date: 08/26/96 Job: 96013