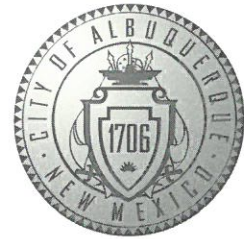


CITY OF ALBUQUERQUE



March 8, 2019

John H Nourzad, P.E.
GreenbergFarrow
1430 W.Peachtree St. NW
Atlanta, GA 30309

**Re: Murphey Express
3751 Highway 528 NW,
30-Day Temporary Certificate of Occupancy- Transportation Development
Transportation Development Final Inspection
Engineer's/Architect's Stamp dated 7-9-18 (A14D003A) Cert date 3-8-18**

Dear Mr. Nourzad,

Based upon the information provided in your submittal received 3-8-18, Transportation Development has no objection to the issuance of a 30-day Temporary Certificate of Occupancy. This letter serves as a "green tag" from Transportation Development for a 30-day Temporary Certificate of Occupancy to be issued by the Building and Safety Division.

Prior to the issuance of a permanent Certificate of Occupancy, the following items must be addressed:

1. Please verify parking stall width dimensions on NW Corner. 8 feet 6 inches is the minimum width.
2. Prior to release of final CO, please submit a complete application package. Attached is the submittal process.

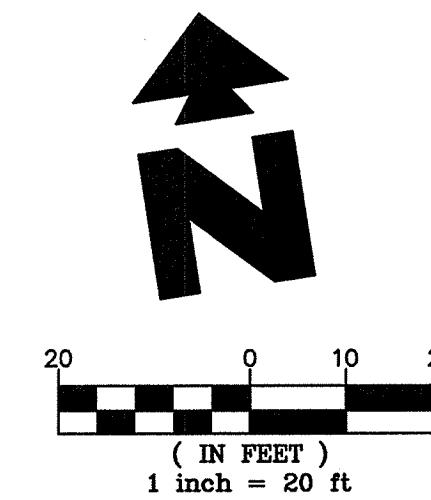
Once corrections are complete resubmit acceptable package along with fully completed Drainage Transportation Information Sheet to front counter personnel for log in and evaluation by Transportation. For digital submittal and minor comments and/or repairs, please submit photos to PLNDRS@cabq.gov prior to submittal. If you have any questions, please contact me at (505) 924-3981.

Sincerely,

Ernie Gomez
Plan Checker, Planning Dept.
Development Review Services

EG via: email
C: CO Clerk, File

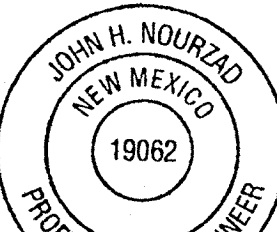
ZONING:
SU-1 (SPECIAL USE ZONE)



344537-018)-2015v0

SHEET NO.

५



[Handwritten signature]

JUN 12 2018

SITE PLAN

MURPHY EXPRESS
3751 HIGHWAY 528 NW

ALBUQUERQUE NEW MEXICO

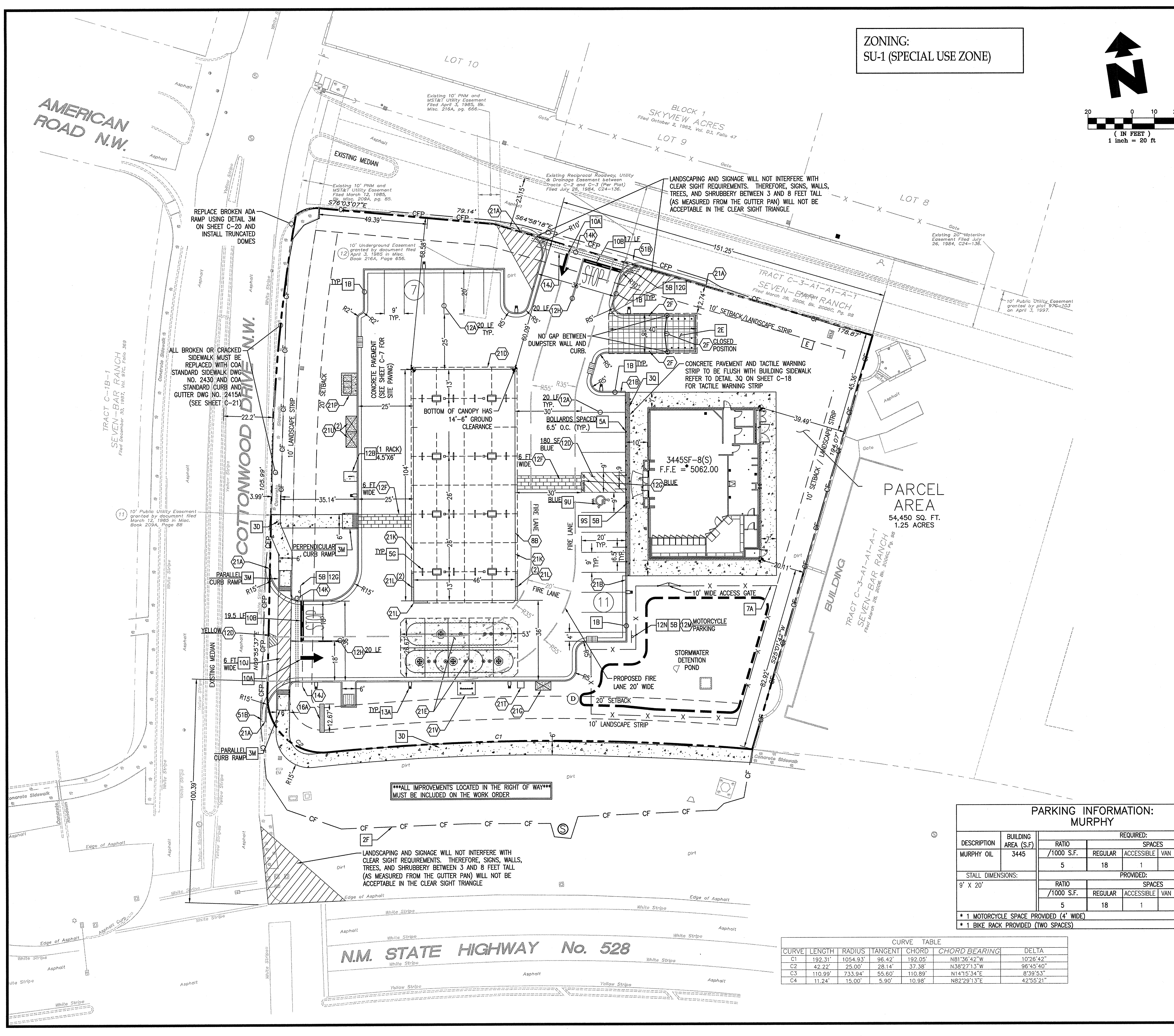
GreenbergFarrow

430 W. PEACHTREE ST. NW SUITE 200
ATLANTA, GA 30309
PHONE: (404) 601 4000
FAX: (404) 601 3970
DWG NAME: ALBUQUERQUE, NM
JOB NO.: 20160897.0

MURPHY OIL USA, INC.

MURPHY
USA★

200 PEACH STREET
EL DORADO, AR 71730



PARKING INFORMATION: MURPHY						
DESCRIPTION	BUILDING AREA (S.F.)	REQUIRED:				
		RATIO	SPACES			
MURPHY OIL	3445	/1000 S.F.	REGULAR	ACCESSIBLE	VAN ACCESSIBLE	TOTAL
		5	18	1	1	18
STALL DIMENSIONS:		PROVIDED:				
9' X 20'		RATIO	SPACES			
		/1000 S.F.	REGULAR	ACCESSIBLE	VAN ACCESSIBLE	TOTAL
		5	18	1	1	18
* 1 MOTORCYCLE SPACE PROVIDED (4' WIDE)						
* 1 BIKE RACK PROVIDED (TWO SPACES)						

CURVE TABLE						
CURVE	LENGTH	RADIUS	TANGENT	CHORD	CHORD BEARING	DELTA
C1	192.31'	1054.93'	96.42'	192.05'	N81°36'42"W	10°26'42"
C2	42.22'	25.00'	28.14'	37.38'	N38°27'13"W	96°45'40"
C3	110.99'	733.94'	55.60'	110.89'	N14°15'34"E	8°39'53"
C4	11.24'	15.00'	5.90'	10.98'	N82°29'13"E	42°55'21"

SITE DETAILS -- SEE DETAIL SHEETS	
1B	TYPE "B" CONCRETE CURB & GUTTER.
2E	DUMPSITE ENCLOSURE -- ALL PRE-POUR INSPECTIONS MUST BE DONE BY CITY OF ALBUQUERQUE SOLID WASTE DEPT.
2F	CONSTITUTION SAFETY FENCE
3M	CONCRETE SIDEWALK
3M	WHEELCHAIR RAMP IN SIDEWALK
3M	TACTILE WARNING STRIP (2 FEET WIDE)
5A	GUARD POST (SINGLE)
5B	TRAFFIC SIGN IN BOLLARD
5G	U-BUMPER
7A	CHAIN LINK FENCE
9S	ACCESSIBLE / VAN ACCESSIBLE PARKING SIGN (TYP.)
9U	ACCESSIBLE PARKING SYMBOL (SEE PANT COLOR INDICATED AT SYMBOL)
10A	TRAFFIC FLOW ARROW (TYP.)
10B	STOP BAR (TYP.)
10J	CROSS WALK MARKING
12B	BICYCLE RACK
12G	"STOP" SIGN
12N	MOTORCYCLE PARKING SIGN PER CITY OF ALBUQUERQUE STANDARDS
13A	SITE LIGHT POLE. SEE PHOTOMETRIC PLANS FOR POLE BASE DETAIL, FIXTURE TYPE, AND MOUNTING DETAILS.



1430 West Peachtree Street, NW
Suite 200
Atlanta, GA 30309
404.601.4000
www.greenbergfarrow.com
We Are Global

March 8, 2019

To Shahib Biazar
City of Albuquerque

Project Murphy Oil - Albuquerque NM
Project # 20160897.0
Re Traffic Certification

TRAFFIC CERTIFICATION

I, John Nourzad, NMPE 19062, OF THE FIRM GreenbergFarrow,
HEREBY CERTIFY THAT THIS PROJECT IS IN SUBSTANTIAL COMPLIANCE WITH AND IN ACCORDANCE
WITH THE DESIGN INTENT OF THE APPROVED PLAN DATED 6/12/18. THE RECORD
INFORMATION SHOWN ON THE ENCLOSED AS-BUILT SURVEY HAS BEEN OBTAINED BY Russ
Hugg OF THE FIRM Survtek Consulting Surveyors. I FURTHER CERTIFY THAT
I HAVE REVIEWED AS-BUILT SURVEY AND SITE PICTURES OF THE PROJECT SITE ON 3/8/19
AND HAVE DETERMINED BY VISUAL INSPECTION THAT THE SURVEY DATA PROVIDED IS
REPRESENTATIVE OF ACTUAL SITE CONDITIONS AND IS TRUE AND CORRECT TO THE BEST OF MY
KNOWLEDGE AND BELIEF. THIS CERTIFICATION IS SUBMITTED IN SUPPORT OF A REQUEST FOR
TEMPORARY CERTIFICATE OF OCCUPANCY.

THE RECORD INFORMATION PRESENTED HEREON IS NOT NECESSARILY COMPLETE AND INTENDED
ONLY TO VERIFY SUBSTANTIAL COMPLIANCE OF THE TRAFFIC ASPECTS OF THIS PROJECT. THOSE
RELYING ON THE RECORD DOCUMENT ARE ADVISED TO OBTAIN INDEPENDENT VERIFICATION OF ITS
ACCURACY BEFORE USING IT FOR ANY OTHER PURPOSE.

Signature of Engineer or Architect

ENGINEER'S STAMP



MAR 08 2019

Date