



October 8, 1996

Martin J. Chávez, Mayor

Ebbie Nakhjavani
EKN Engineering
4770 Campus Drive Suite 240
New Port Beach, CA 92660

**RE: COTTONWOOD CORNERS SHOPPING CENTER (A14-D7) UPDATED
DRAINAGE AND GRADING PLANS FOR BUILDING PERMIT
APPROVAL. ENGINEER'S STAMP DATED OCTOBER 3, 1996 (SHEETS 3
AND 4) AND JULY 17, 1996 (SHEET 1 AND SHEETS 5 THRU 12)**

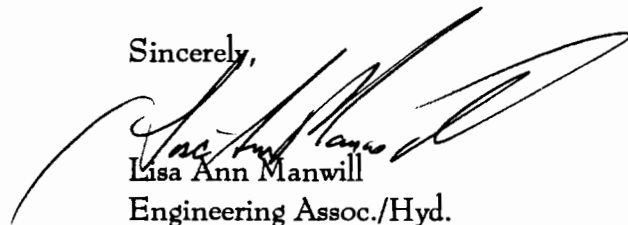
Dear Mr. Nakhjavani:

Based on your updated submittal dated October 4, 1996, the above referenced project is approved for Building Permit.

Prior to Certificate of Occupancy, an Engineer's Certification, per the DPM checklist, will be required.

If I can be of further assistance, please feel free to contact me at 768-3622.

Sincerely,

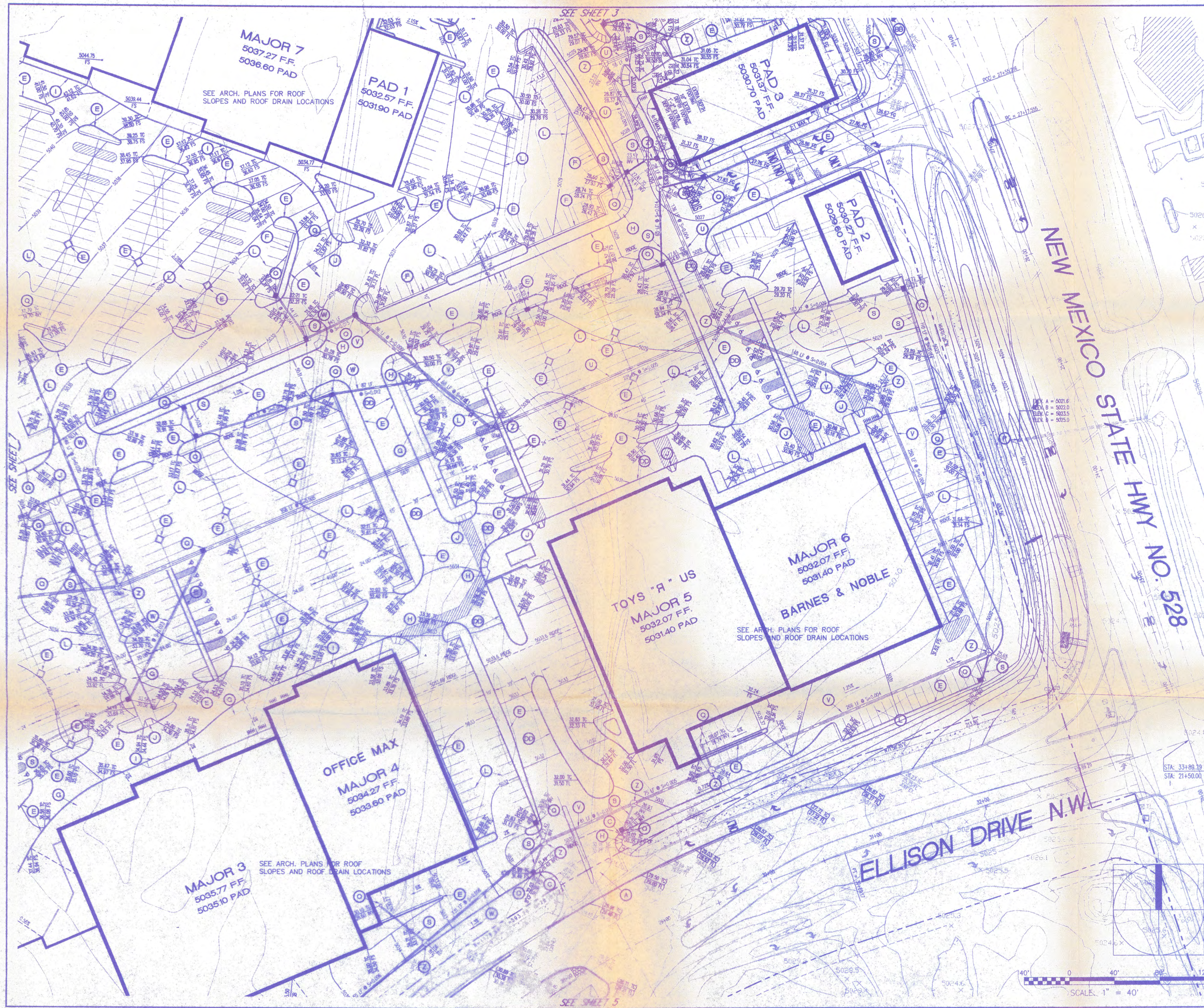


Lisa Ann Manwill
Engineering Assoc./Hyd.

c: Andrew Garcia
File

Good for You, Albuquerque!





CONSTRUCTION NOTES:

- A SEE SHEET 9 FOR AC DEPTHS.
- B CONSTRUCT 2' HIGH BERM WITH 3:1 SIDE SLOPES.
- C CONSTRUCT 5' - 6" TO 8" CURB TRANSITION.
- D SAWCUT AND REMOVE EXISTING PAVEMENT
- E CONSTRUCT MOUNTABLE CURB ROLL TYPE PER COA STD 2415 & DETAIL 1 ON SHEET 12.
- F CONSTRUCT 6" CURB AND GUTTER PER COA STD 2415
- G CONSTRUCT 4" PCC SIDEWALK.
- H CONSTRUCT WHEEL CHAIR RAMP TYPE I PER COA STD 2441.
- I CONSTRUCT WHEEL CHAIR RAMP PER DETAIL 2 ON SHEET 12.
- J CONSTRUCT WHEEL CHAIR RAMP PER DETAIL 3 ON SHEET 12.
- K CONSTRUCT CONCRETE VALLEY GUTTER PER COA STD 2420.
- L STRIPE PARKING STALLS PER DETAIL 4 ON SHEET 12.
- M CONSTRUCT STANDARD CURB AND GUTTER PER COA STD 2415.
- N CONSTRUCT STANDARD CHAIN LINK FENCE PER COA STD 2252.
- P CONSTRUCT 18" CMP RISER W/ 18" RCP OUTLET PER DETAIL 5 ON SHEET 12.
- O CONSTRUCT DRAIN BOX PER DETAIL 7 ON SHEET 12.
- R CONSTRUCT MODIFIED JUNCTION STRUCTURE PER DETAIL 11 ON SHEET 12.
- S INSTALL 12" PVC ASTM D-3034, SDR 35.
- T CONSTRUCT SPILLWAY PER DETAIL 6 ON SHEET 12.
- U INSTALL 36" RCP 20000.
- V INSTALL 24" RCP 20000.
- W INSTALL 18" RCP 20000.
- X INSTALL STORM INLET "B" PER COA STD 2203 WITH STORM INLET ALBUQUERQUE GRATE PER COA STD 2220.
- Y CONSTRUCT GUTTER TRANSITION PER DETAIL 8 ON SHEET 12.
- Z INSTALL 6" DIA. STORM DRAIN MANHOLE PER COA STD 2101 & 2102.
- AA CONSTRUCT SIDEWALK WITH CURB PER DETAIL 10 ON SHEET 12.
- BB INSTALL 12" AREA DRAIN PER DETAIL 12 ON SHEET 12.
- CC INSTALL 27" RCP 20000.
- DD INSTALL 6" PVC PIPE ASTM D-3034, SDR35

SHEET INDEX MAP:

DATE: 09 / 27 / 1996

EKN Engineers / Planners / Surveyors
4770 CAMPUS DRIVE, SUITE 240, NEWPORT BEACH, CA 92660
(714) 293-1025 FAX (714) 293-9827

CITY OF ALBUQUERQUE
MUNICIPAL DEVELOPMENT DEPARTMENT
ENGINEERING DIVISION

TITLE: **GRADING AND DRAINAGE PLAN
COTTONWOOD CORNERS SHOPPING CENTER
TRACT O-1A-1 AND O-2A-1**

APPROVALS	ENGINEER	DATE	APPROVALS	ENGINEER
CITY ENGINEER			LIQUID WASTE	
A.C.E.-DESIGN			TRAFFIC	
A.C.E.-HYDROLOGY			WATER	

DRAWING	NO.	DATE	SHEET

RECEIVED

OCT - 4 1996

HYDROLOGY DIV.