



# ***City of Albuquerque***

P.O. BOX 1293 ALBUQUERQUE, NEW MEXICO 87103

***Planning Department  
Transportation Development Services Section***

October 16, 2003

Glenn S. Broughton, P.E.  
7500 Jefferson, Coutyard I  
Albuquerque, NM 87109-4335

Re: Certification Submittal for Final Building Certificate of Occupancy for  
Quarters BBQ Restaurant, [A-14 / D9C]  
3700 Ellison Dr NW  
Engineer's Stamp Dated 10/07/03

Dear Mr. Broughton:

The TCL / Letter of Certification submitted on October 8, 2003 is sufficient for acceptance by this office for final Certificate of Occupancy (C.O.). Notification has been made to the Building and Safety Section.

Sincerely,

Nilo E. Salgado-Fernandez, P.E.  
Senior Traffic Engineer  
Development and Building Services  
Planning Department

c: Engineer  
Hydrology file  
CO Clerk

October 7, 2003

Mr. Nilo Salgado-Fernandez  
City of Albuquerque - Transportation  
P O Box 1293  
Albuquerque, NM 87103

Re: Quarters BBQ Restaurant Traffic Circulation Layout Certification; Zone Atlas Map A-14-Z

Dear Mike:

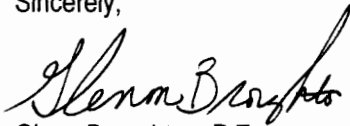
Attached is a copy of the DRB approved site plan. With this submittal we are seeking Permanent Certificate of Occupancy for the above referenced project. A site visit was performed on September 22, 2003 to visually inspect the site to verify that the site improvements have been completed and are in substantial compliance with the approved site plan.

The following exception to the site plan is noted below.

Textured concrete crosswalks at the locations shown on the approved site plan are not installed. The designated crosswalks have been delineated with painted markings.

If you have any questions regarding this grading certification, please give me a call.

Sincerely,

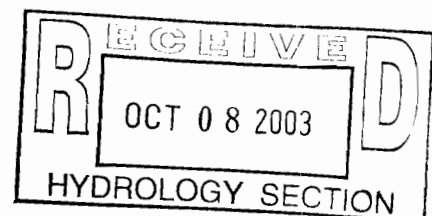


Glenn Broughton, P.E.  
Community Development and Planning



GB/am  
Enclosure

cc: Martin Grummer, Martin FM Grummer, Architect (w/encl)  
Dan Gear, Gear & Condon (w/encl)



020254-006

**Project:** Nello Brothers Inc. dba  
Quarters BBQ Restaurant  
and Package Liquors  
**Title:** SITE PLAN FOR BUILDING PERMIT

**REVISIONS**

**DATE:** 03-12-02

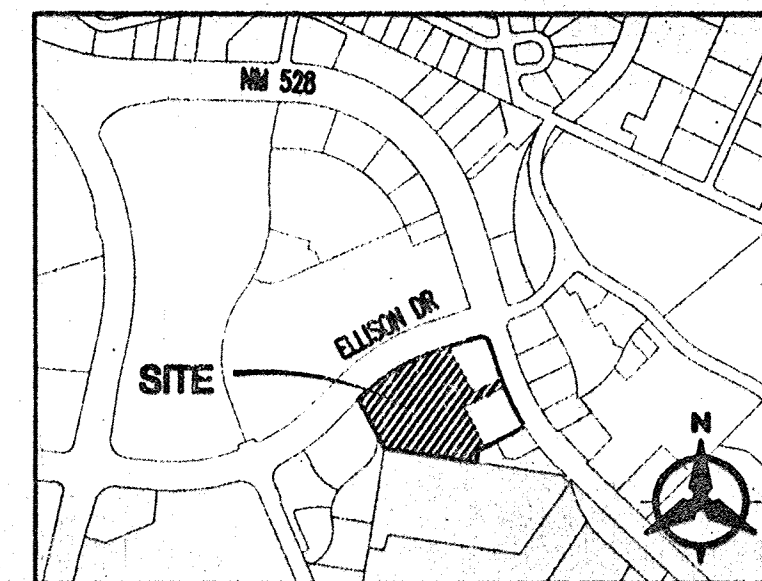
**DRAWN BY:** ED

**CHECKED BY:** GB

**APPROVED BY:** GB

**SHEET NO.:**

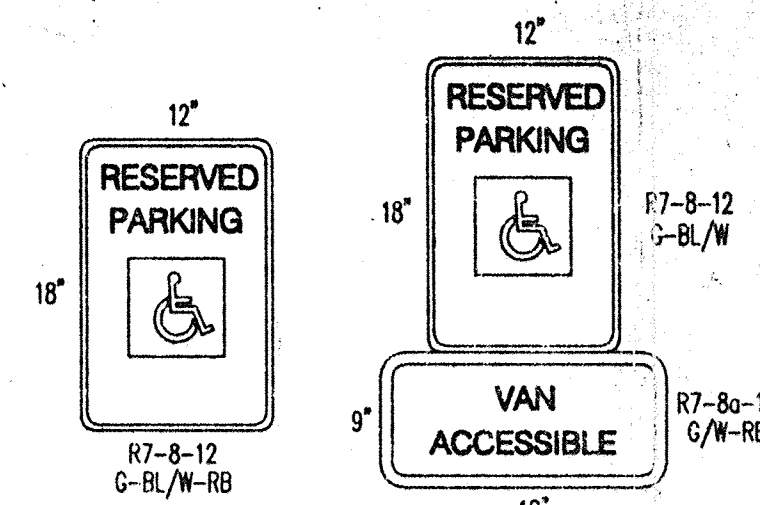
C1.1



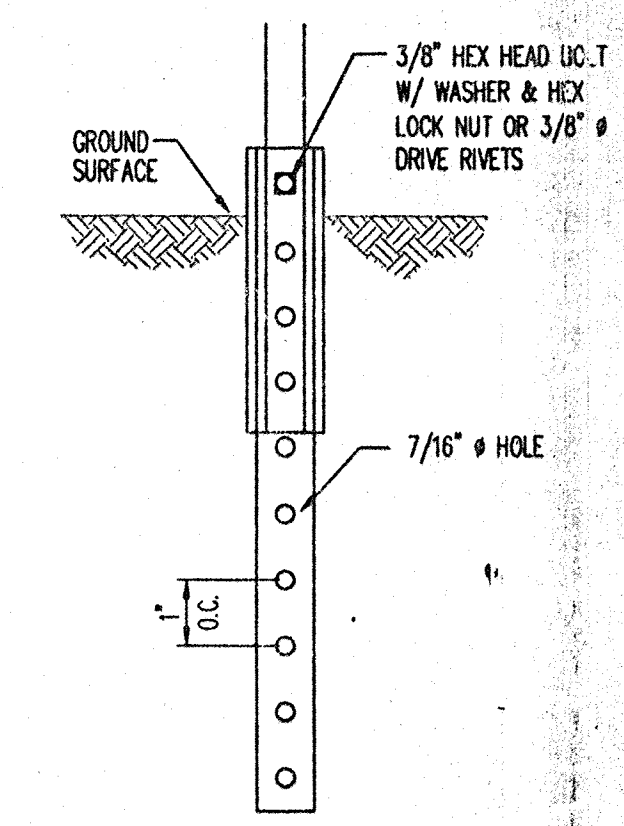
**VICINITY MAP**  
ZONE ATLAS A-14-2

**KEYED NOTES**

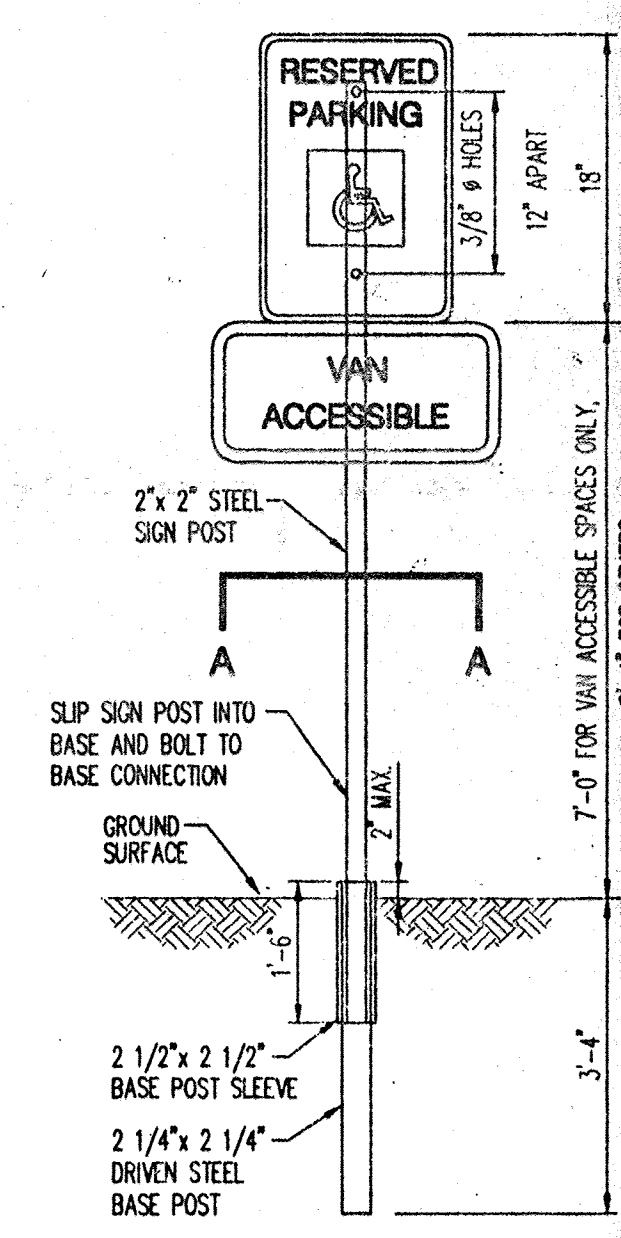
1. CONSTRUCT 6" MEDIAN CURB AND GUTTER PER COA STD. DWG 2415
2. CONSTRUCT 6" WIDE SIDEWALK PER COA STD. DWG 2430
3. CONSTRUCT 30" HIGH CMU SITE WALL WITH STUCCO FINISH TO MATCH COLOR OF BUILDING.
4. CONSTRUCT PEDESTRIAN CROSSING, TEXTURED CONCRETE PAVEMENT
5. CONSTRUCT HC RAMP.
6. INSTALL PARKING BUMPER. TYP 16 PLACES
7. PAINT 4" WHITE STRIPING.
8. MONUMENT SIGN INTERNALLY ILLUMINATED
9. INSTALL FIRE HYDRANT PER COA STD. DWG 2340
10. INSTALL STOP SIGN.
11. INSTALL 6" SANITARY SEWER LINE.
12. INSTALL 6" WATER LINE.
13. SIGN ON WALL.
14. CONSTRUCT REFUSE ENCLOSURE.
15. CONSTRUCT 15'X30' (450SF) CMU STORAGE AREA WITH METAL ROOF FOR WOOD AND MAINTENANCE EQUIPMENT. FENCE AT FRONT OF WOOD STORAGE AREA (PHASE 1)
16. EXISTING STOP SIGN.
17. INSTALL 4" SANITARY SEWER LINE.
18. INSTALL GAS LINE.
19. NON ILLUMINATED MONUMENT SIGN.
20. OUTDOOR PATIO AREA.
21. EXISTING 100' CURB CUT.
22. EXISTING 30' CURB CUT.
23. EXISTING 6' WIDE SIDEWALK.
24. EXISTING 90' CURB CUT.
25. EXISTING FIRE HYDRANT TO BE REMOVED & RELAYED
26. 5'X10' CONCRETE PAD FOR BICYCLE PARKING



**HANDICAP PARKING SIGNS**  
N.T.S.



**SECTION A-A**  
N.T.S.

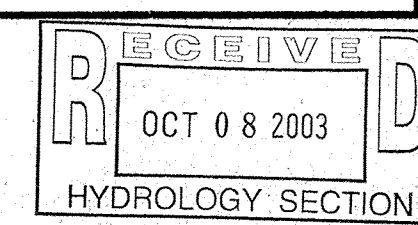


**SIGN MOUNTING DETAIL**  
N.T.S.

AFD PLANS CHECKING OFFICE  
824-3611  
APPROVED/DISAPPROVED  
JED 3-12-02  
SIGNATURE & DATE

**GENERAL NOTES**

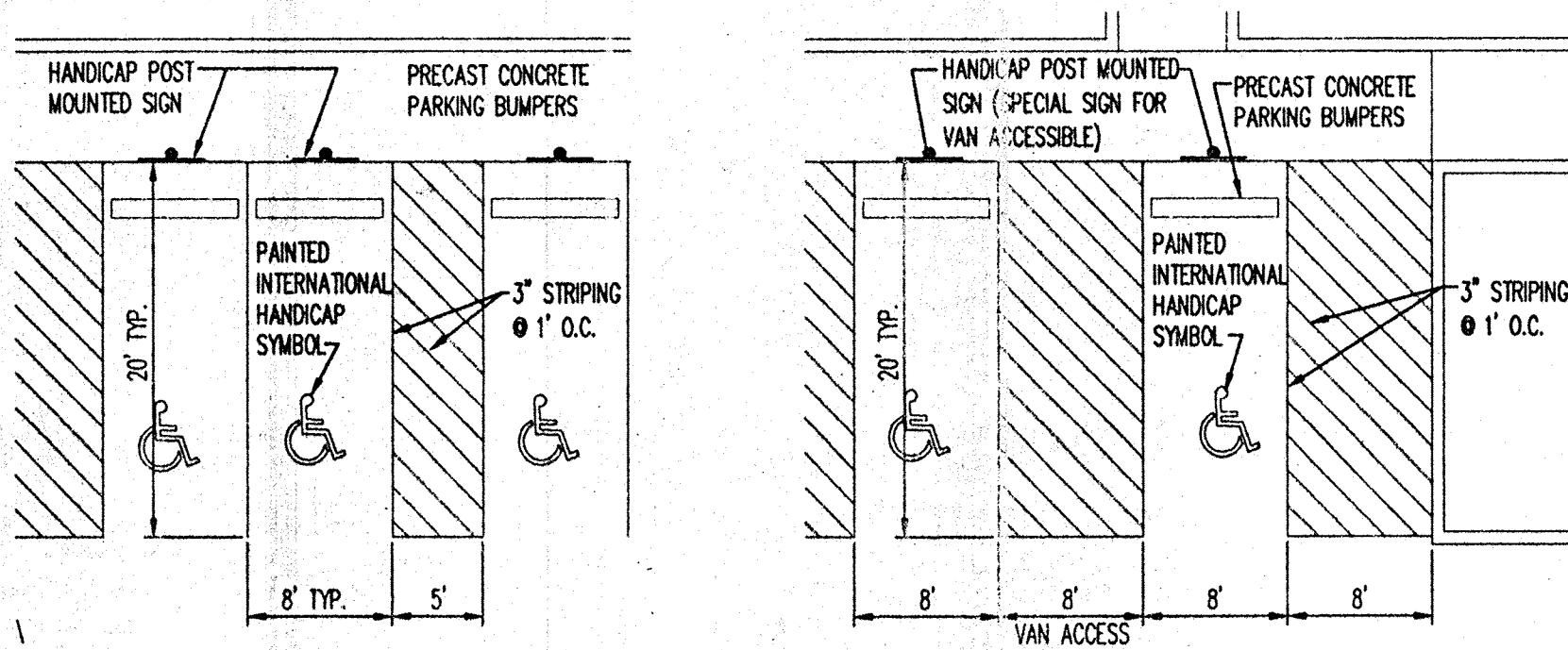
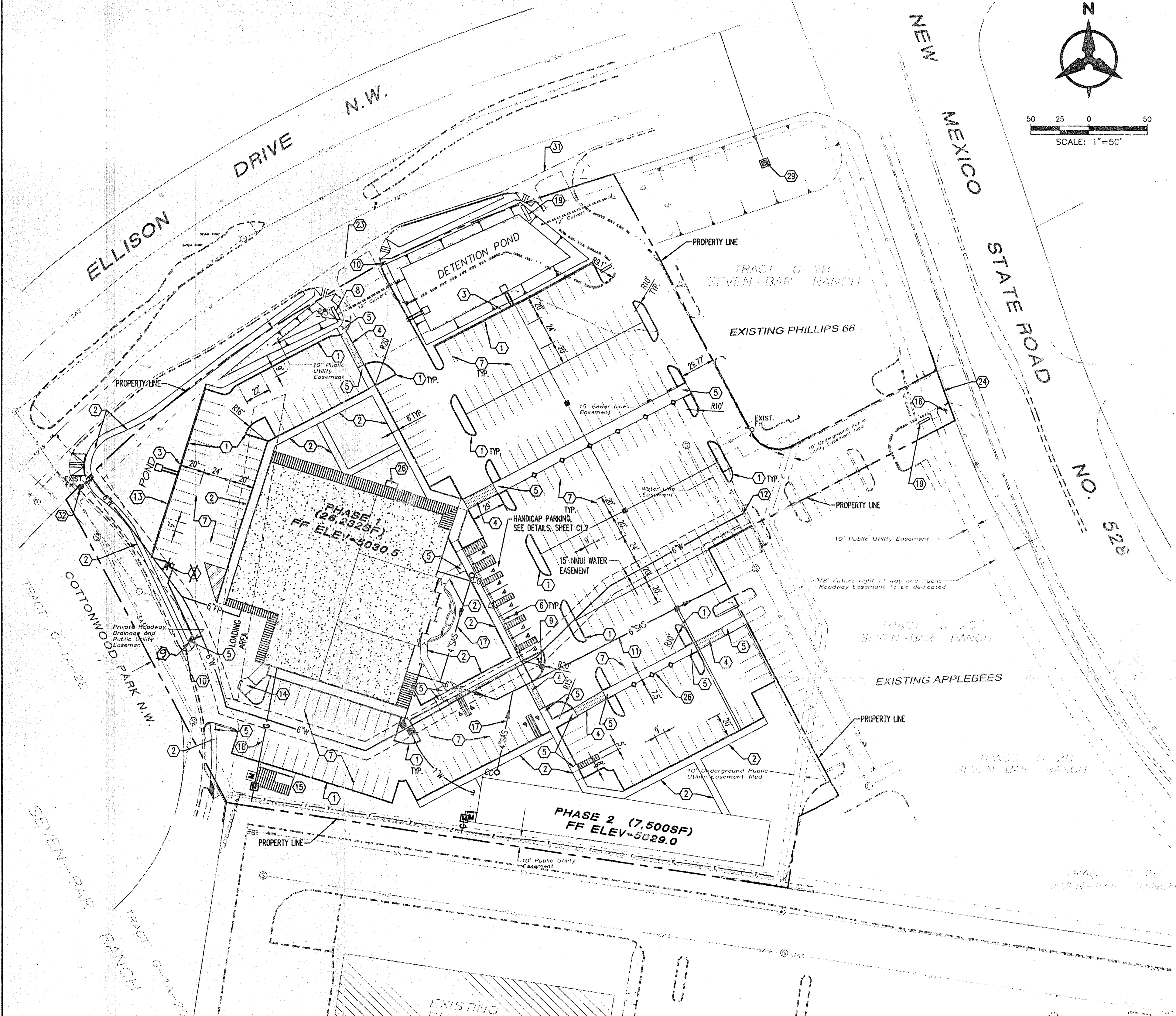
1. DRIVEPADS, CURBS, & SIDEWALKS SHALL BE IN ACCORDANCE WITH THE CITY OF ALBUQUERQUE STANDARD SPECIFICATIONS AND DETAILS.
2. SEE CIVIL DRAWINGS FOR SITE GRADING AND DRAINAGE.



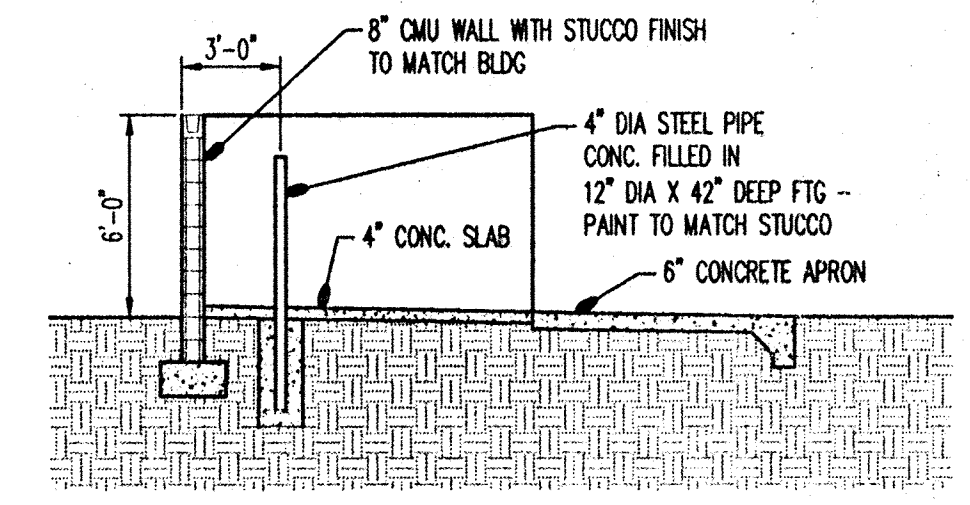
**CHAVEZ • GRIEVES**  
CONSULTING ENGINEERS, INC.  
5430 JEFFERSON STREET N.E. • ALBUQUERQUE, NEW MEXICO 87110  
PHONE (505) 344-6000 • FAX (505) 343-8700

**Bohannon • Huston**  
Courtney One 7500 JEFFERSON NE ALBUQUERQUE NEW MEXICO 87109

ENGINEERS PLANNERS PHOTOGRAMMETRISTS SURVEYORS SOFTWARE DEVELOPERS



**HANDICAP PARKING DETAIL**  
N.T.S.



**REFUSE ENCLOSURE**  
N.T.S.

