

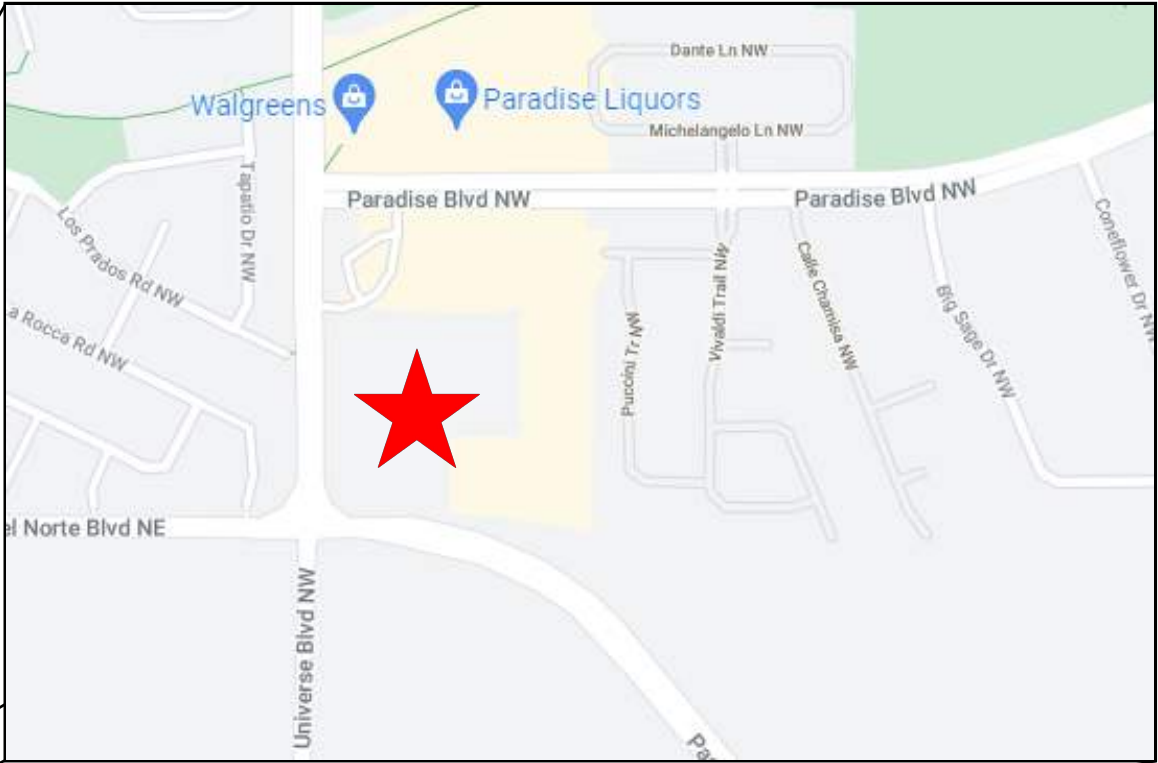
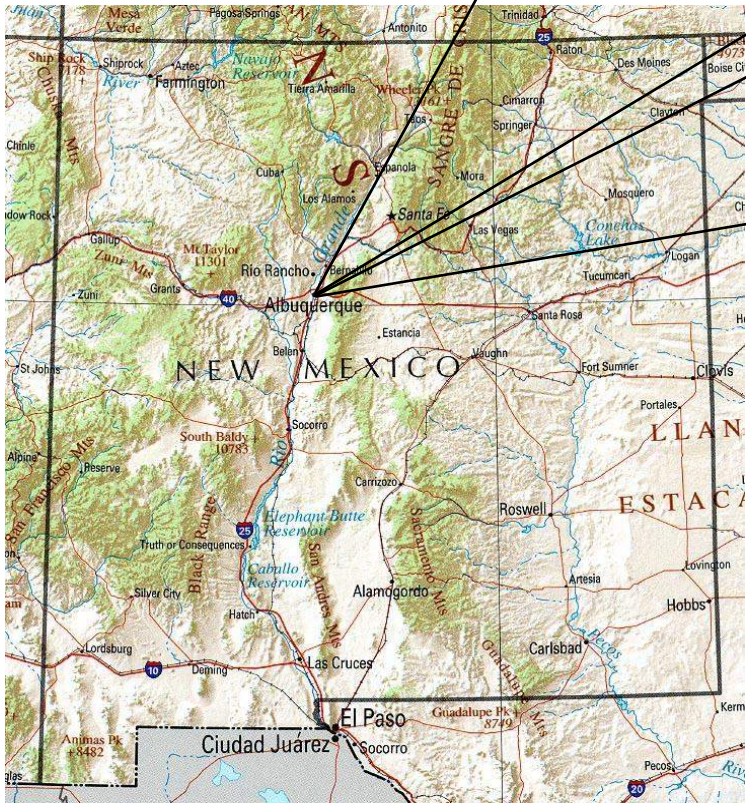
VENTANA RANCH PAVING & UTILITY IMPROVEMENTS

TEMPORARY SEDIMENT AND EROSION CONTROL DRAWINGS

ALBUQUERQUE, BERNALILLO COUNTY, NM

DRAWING INDEX

- 1 COVER SHEET
- 2 PROJECT DETAILS
- 3 GENERAL NOTES
- 4 BEST MANAGEMENT PRACTICES
- 5 BEST MANAGEMENT PRACTICES
- 6 BEST MANAGEMENT PRACTICES
- 7 BEST MANAGEMENT PRACTICES
- 8 TЕСP - PARADISE BLVD.
- 9 TЕСP - ACCESS ROAD, UNIVERSE BLVD.
- 10 TЕСP - POND EXCAVATION



- SWPPP
- Stormwater
- Erosion Control
- Reclamation
- Seeding



REVISION ITEM					DATE

FRANKLIN'S EARTHMOVING, INC.
VENTANA RANCH PAVING &
UTILITY IMPROVEMENTS
ALBUQUERQUE, NM

DESIGNED BY:
K. FETTER, P.E.
DRAWN BY:
S. FETTER

SHEET:
COVER

PROJECT DETAILS

NPDES ID: NMR1004B5, NMR1004B6

ADDRESS: VENTANA RANCH, UNIVERSE & PARADISE BLVD., ALBUQUERQUE, NM 87114

GPS COORDINATES: 35.189472, -106.726908

TOTAL ACREAGE: 13.0

ANTICIPATED DISTURBED ACREAGE: 2.5

FIRST RECEIVING WATERS: UNNAMED WATER

WATERS WITHIN ONE MILE OF PROJECT: NONE

IMPAIRED/TIERED WATERS: NONE

ENDANGERED SPECIES: NONE

SUPPORT ACTIVITIES: SEE SECTION 3.6 OF SWPPP NARRATIVE

SOIL TYPE: SEE NRCS SOIL REPORT PROVIDED IN SWPPP BINDER

TYPE PRE-CONSTRUCTION COVER: ASPHALT PAVING, SIDEWALK, CURB/GUTTER, WEEDS AND NATIVE VEGETATION (APPROXIMATELY <50% DENSITY)

STABILIZATION MEASURES AND DEADLINES: SEE SECTION 6.0 OF SWPPP NARRATIVE

REGULATING AUTHORITY: ENVIRONMENTAL PROTECTION AGENCY (EPA)

REGULATING PERMIT: 2017 CONSTRUCTION GENERAL PERMIT

OPERATORS

PROPERTY OWNER (UNIVERSE BLVD. & PASEO DEL NORTE):
CITY OF ALBUQUERQUE
PUBLIC WORKS DEPARTMENT

PROPERTY OWNER (VENTANA SQUARE):
DIAMOND TAIL REALTY, LL
20 FALL PIPPIN LN, SUITE 203
ASHEVILLE, NC 28803
(505) 850 - 2427

GENERAL CONTRACTOR (GC):
FRANKLIN'S EARTHMOVING, INC.
700 INDUSTRIAL AVE. NE
ALBUQUERQUE, NM 87107
(505) 884-6947

GC CONTACT:
JOHN ELLIS
(505) 884-6947

STORMWATER TEAM

SEE SECTION 2.0 OF THE SWPPP NARRATIVE FOR THE PROJECT'S STORMWATER TEAM, RESPONSIBILTIES AND CONTACT INFORMATION

SEQUENCE OF ACTIVITIES

REFER TO THE ANTICIPATED CONSTRUCTION SCHEDULE INCLUDED WITH THE SWPPP BINDER.

PHASE I: SITE PREPARATION AND PRE – CONSTRUCTION

- 1.PRIOR TO BEGINNING EARTH DISTURBING ACTIVITIES, THE OPERATOR(S) WILL CLEARLY DEMARCATATE THE LIMITS OF DISTURBANCE WITH STAKES, RIBBONS, CONSTRUCTION FENCING, OR OTHER APPROPRIATE METHOD. THESE DEMARCATATIONS SHALL REMAIN VISIBLE FOR THE DURATION OF THE PROJECT.
- 2.THE INITIAL EROSION CONTROL MEASURES SHALL BE INSTALLED PRIOR TO EARTH DISTURBANCE. THE INITIAL CONTROL MEASURES MAY INCLUDE BUT ARE NOT LIMITED TO:
- a.PERIMETER CONTROLS (E.G., SILT FENCE, WATTLES, CONSTRUCTION FENCE)
 - b.VEHICLE TRACKING PAD IF THE SITE ENTERS/EXITS ONTO A PAVED PUBLIC ROADWAY
 - c.NPDES NOTIFICATION POSTING
 - d.DESIGNATED STAGING AREA
 - e.ANCHORED SANILETS
 - f.DUMPSTERS

PHASE II: CONSTRUCTION ACTIVITIES

- 1.THE OPERATORS WILL MINIMIZE THE AREA DISTURBED AS MUCH AS FEASIBLY POSSIBLE.
- 2.ANY DISTURBED AREA IN WHICH CONSTRUCTION ACTIVITIES HAVE TEMPORARILY CEASED SHALL TEMPORARILY STABILIZED USING THE METHODS DESCRIBED IN SECTION 6.4 OF THE SWPPP NARRATIVE. SECTION 6.3 OF THE SWPPP NARRATIVE PROVIDES THE TEMPORARY STABILIZATION DEADLINES.
- 3.THE LOCATION OF SOME BMPS MAY REQUIRE ALTERATION IF DRAINAGE PATTERNS CHANGE DURING CONSTRUCTION. THE OPERATORS SHALL INSTALL ADDITIONAL BMPS OR UPGRADE BMPS IF NECESSARY.
- 4.IF CONCRETE IS USED ONSITE AND CONCRETE TRUCKS ARE UNABLE TO WASHOUT OFFSITE, THE OPERATORS WILL PROVIDE ONE OR MORE DESIGNATED CONCRETE WASHOUT AREAS. THE CONCRETE WASHOUTS MUST BE INSTALLED PRIOR TO CONCRETE USE ONSITE AND REMOVED ONLY AFTER CONCRETE WORK IS COMPLETE.

PHASE III: FINAL STABILIZATION AND CONSTRUCTION COMPLETION

- 1.IF APPLICABLE, REVEGETATION OR LANDSCAPING SHALL BE INITIATED IMMEDIATELY UPON KNOWING WORK IN A DISTURBED AREA HAS PERMANENTLY STOPPED AND THE AREA IS NOT COVERED BY PERMANENT STRUCTURES, UNLESS INFEASIBLE. SECTION 6.5 OF THE SWPPP NARRATIVE DISCUSSES PERMANENT STABILIZATION AND ASSOCIATED DEADLINES.
- 2.THE OPERATORS SHALL REMOVE TEMPORARY BMPS ONLY AFTER FINAL STABILIZATION IS COMPLETE.



					DATE
					REVISION ITEM
					#

FRANKLIN'S EARTHMOVING, INC.
VENTANA RANCH PAVING &
UTILITY IMPROVEMENTS
SWPPP NOTES

DESIGNED BY:
K. FETTER, P.E.
DRAWN BY:
S. FETTER

SHEET:
GENERAL
NOTES

GENERAL NOTES

THE NPDES COMPLIANCE SWPPP DRAWING AND ASSOCIATED DOCUMENTATION IS AND SHALL BE CONSIDERED A LIVING DOCUMENT ALLOWING FOR MODIFICATIONS AS SITE CONDITIONS CHANGE OR DICTATE.

ALL SITE FEATURES (EXISTING/PROPOSED GRADES, EXISTING CONSTRUCTION, FUTURE CONSTRUCTION, ETC.) SHOWN IS PER INFORMATION FROM OTHERS.

MINIMUM REQUIREMENTS TO FURTHER DEVELOP OR MODIFY THIS STORMWATER POLLUTION PREVENTION PLAN (SWPPP) DRAWING SHALL BE BASED ON THE CURRENT EDITION OF THE NEW MEXICO STATE HIGHWAY AND TRANSPORTATION DEPARTMENT (NMSHTD), NPDES LAW AND CITY OF ALBUQUERQUE ORDINANCE § 14-5-2-11.

ALL OPERATORS SHALL SUBMIT A NOTICE OF INTENT (NOI). THE NOI SHALL BE ACTIVE AND POSTED ON THE EPA'S WEBSITE PRIOR TO COMMENCING EARTH DISTURBING ACTIVITIES.

LOCATE TEMPORARY WASHOUT, ANCHORED TOILETS, CONSTRUCTION ENTRANCE AND PARKING, STAGING, REFUELING, TRASH CONTAINMENT AREA TO MINIMIZE SITE DISTURBANCE DURING CONSTRUCTION ACTIVITY.

THE OPERATOR IS REQUIRED TO REGULARLY PERFORM STREET SWEEPING AND CLEAN - UP MEASURES IN THE EVENT OF SEDIMENT TRACK - OUT.

THE FOLLOWING ARE STANDARD EROSION CONTROL REQUIREMENTS PER THE CITY OF ALBUQUERQUE STORMWATER QUALITY DEPARTMENT (MARCH 24, 2021):

ALL EROSION AND SEDIMENT CONTROL (ESC) WORK ON THESE PLANS, EXCEPT AS OTHERWISE STATED OR PROVIDED HEREON SHALL BE PERMITTED, CONSTRUCTED, INSPECTED, AND MAINTAINED IN ACCORDANCE WITH:

THE CITY ORDINANCE § 14-5-2-11, THE ESC ORDINANCE;
THE EPA'S 2017 CONSTRUCTION GENERAL PERMIT (CGP); AND
THE CITY OF ALBUQUERQUE CONSTRUCTION BMP MANUAL

ALL TEMPORARY SEDIMENT AND EROSION CONTROL MEASURES MUST BE INSTALLED PRIOR TO BEGINNING ANY EARTH MOVING ACTIVITIES EXCEPT AS SPECIFIED HEREON IN THE PHASING PLAN. CONSTRUCTION OF EARTHEN BMPS SUCH AS SEDIMENT TRAPS, SEDIMENT BASINS, AND DIVERSION BERMS SHALL BE COMPLETED AND INSPECTED PRIOR TO ANY OTHER CONSTRUCTION OR EARTHWORK. SELF-INSPECTION IS REQUIRED AFTER INSTALLATION OF THE BMPS AND PRIOR TO BEGINNING CONSTRUCTION.

SEE SECTION 3.5 OF THE SWPPP NARRATIVE OR THE CONTRACTOR'S SCHEDULE (TAB II OF SWPPP BINDER) FOR BMP SCHEDULING OR PHASING.

SELF-INSPECTIONS - AT A MINIMUM A ROUTINE COMPLIANCE SELF-INSPECTION IS REQUIRED TO REVIEW THE PROJECT FOR COMPLIANCE WITH THE CONSTRUCTION GENERAL PERMIT ONCE EVERY 14 DAYS AND AFTER ANY PRECIPITATION EVENT OF 1/4 INCH OR GREATER UNTIL THE SITE CONSTRUCTION HAS BEEN COMPLETED AND THE SITE DETERMINED AS STABILIZED BY THE CITY. REPORTS OF THESE INSPECTIONS SHALL BE KEPT BY THE PERSON OR ENTITY AUTHORIZED TO DIRECT THE CONSTRUCTION ACTIVITIES ON THE SITE AND MADE AVAILABLE UPON REQUEST.

CORRECTIVE ACTION REPORTS MUST BE KEPT BY THE PERSON OR ENTITY AUTHORIZED TO DIRECT THE CONSTRUCTION ACTIVITIES ON THE SITE AND MADE AVAILABLE UPON REQUEST.

STABILIZATION REPORTS MUST BE KEPT BY THE PERSON OR ENTITY AUTHORIZED TO DIRECT THE CONSTRUCTION ACTIVITIES ON THE SITE AND MADE AVAILABLE UPON REQUEST. REPORTS SHOULD INCLUDE RECORDS OF WEED REMOVAL PER CITY ORDINANCE (§ 9-8-1), STERILIZATION, SOIL TEST RESULTS AND RECOMMENDATION, MATERIALS AND MANUFACTURER'S SPECIFICATIONS FOR APPLICATION RATES, ESTIMATED FUNCTIONAL LONGEVITY, METHODS OF APPLICATION, INSPECTION AND MAINTENANCE. THE REDUCED SELF-INSPECTION SCHEDULE IN CGP 4.4.1 APPLIES TO STABILIZED AREA AND ANY DAMAGED OR WORN STABILIZATION MUST BE IDENTIFIED IN THE REPORTS ALONG WITH WEED PROBLEMS. CORRECTIVE ACTIONS FOR STABILIZATION SHALL BE DOCUMENTED IN A STABILIZATION REPORT INCLUDING ACTUAL RATES AND DATES OF STABILIZATION, AND THE MATERIALS AND MANUFACTURER'S SPECIFICATIONS USED.

BMPS SHALL BE INSPECTED AND MAINTAINED UNTIL ALL DISTURBED AREAS ARE STABILIZED IN ACCORDANCE WITH THE FINAL STABILIZATION CRITERIA (CGP 2.2.14.B). GENERALLY, ALL DISTURBED AREAS, OTHER THAN STRUCTURES AND IMPERVIOUS SURFACES, MUST HAVE UNIFORM PERENNIAL VEGETATION THAT PROVIDES 70 PERCENT OR MORE OF THE COVER PROVIDED BY NATIVE VEGETATION OR SEED THE DISTURBED AREA AND PROVIDE NON-VEGETATIVE MULCH THAT PROVIDES COVER FOR AT LEAST THREE YEARS WITHOUT ACTIVE MAINTENANCE. FINAL STABILIZATION MUST BE APPROVED BY THE CITY OF ALBUQUERQUE PRIOR TO REMOVAL OF BMPS AND DISCONTINUATION OF INSPECTIONS.



SWPPP
Stormwater
Erosion Control
Reclamation
Seeding

www.e2rc.com | 505.867.4040

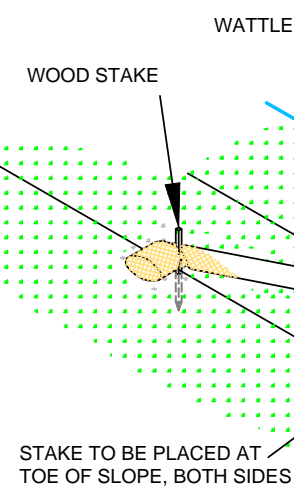


					DATE
					REVISION ITEM
					#

FRANKLIN'S EARTHMOVING, INC.
VENTANA RANCH PAVING &
UTILITY IMPROVEMENTS
SWPPP NOTES

DESIGNED BY:
K. FETTER, P.E.
DRAWN BY:
S. FETTER

SHEET:
GENERAL
NOTES

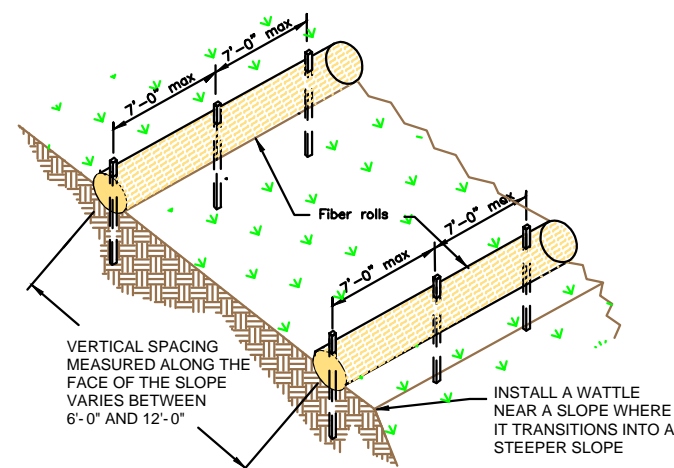


NTS

Diagram illustrating a slope stake layout. A circular stake is shown with concentric circles. A vertical dashed line represents the centerline. The stake is labeled "2'-3" OF STAKE REMAINS EXPOSED". The slope area is cross-hatched and labeled "Slope varies". A vertical dimension of "1'-0" min" is indicated. A note "SEE NOTE" points to the stake.

NTS

VERTICAL SPACING DEPENDENT ON SLOPE GRADIENT.

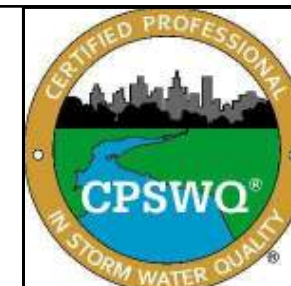


NTS



- SWPPP
- Stormwater
- Erosion Control
- Reclamation
- Seeding

www.e2rc.com | 505.867.4040



#	REVISION ITEM	DATE

FRANKLIN'S EARTHMOVING, INC.
VENTANA RANCH PAVING &
UTILITY IMPROVEMENTS
BMP DETAILS

DESIGNED BY:
K. FETTER, P.E.
DRAWN BY:
S. FETTER

SHEET:

△



ONCE/IF THE SPOILS STOCKPILE IS DEPLETED OR MOVED,
REMOVE THE WATTLES AND REUSE THEM IN THE NEXT
LOCATION.



ONCE THE TRANCH IS BACKFILLED, WATTLES MAY BE REMOVED AND REUSED IN THE NEXT SECTION OF EXCAVATION PROVIDED THEY ARE IN GOOD CONDITION.



IF MULTIPLE DAMS ARE USED, THE TOP OF THE LOWER DAM SHOULD BE THE SAME HEIGHT AS THE ELEVATION AS THE TOE OF THE UPPER DAM.



2-3" OF THE WOODEN STAKE SHOULD BE PRESENT ABOVE THE WATTLE.



USE EQUIPMENT TO COMPACT EARTHEN BERM BY ROLLING OVER BERM TO MINIMIZE SPREAD.

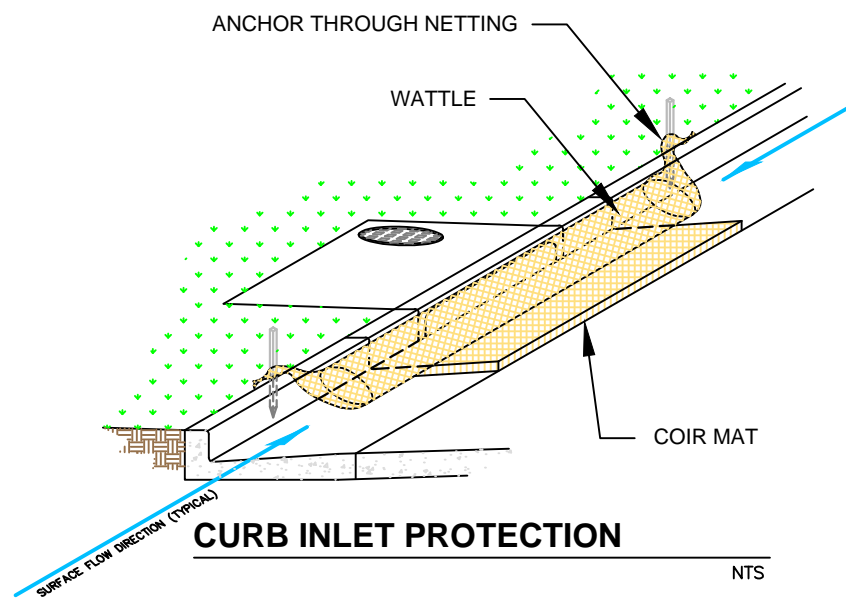
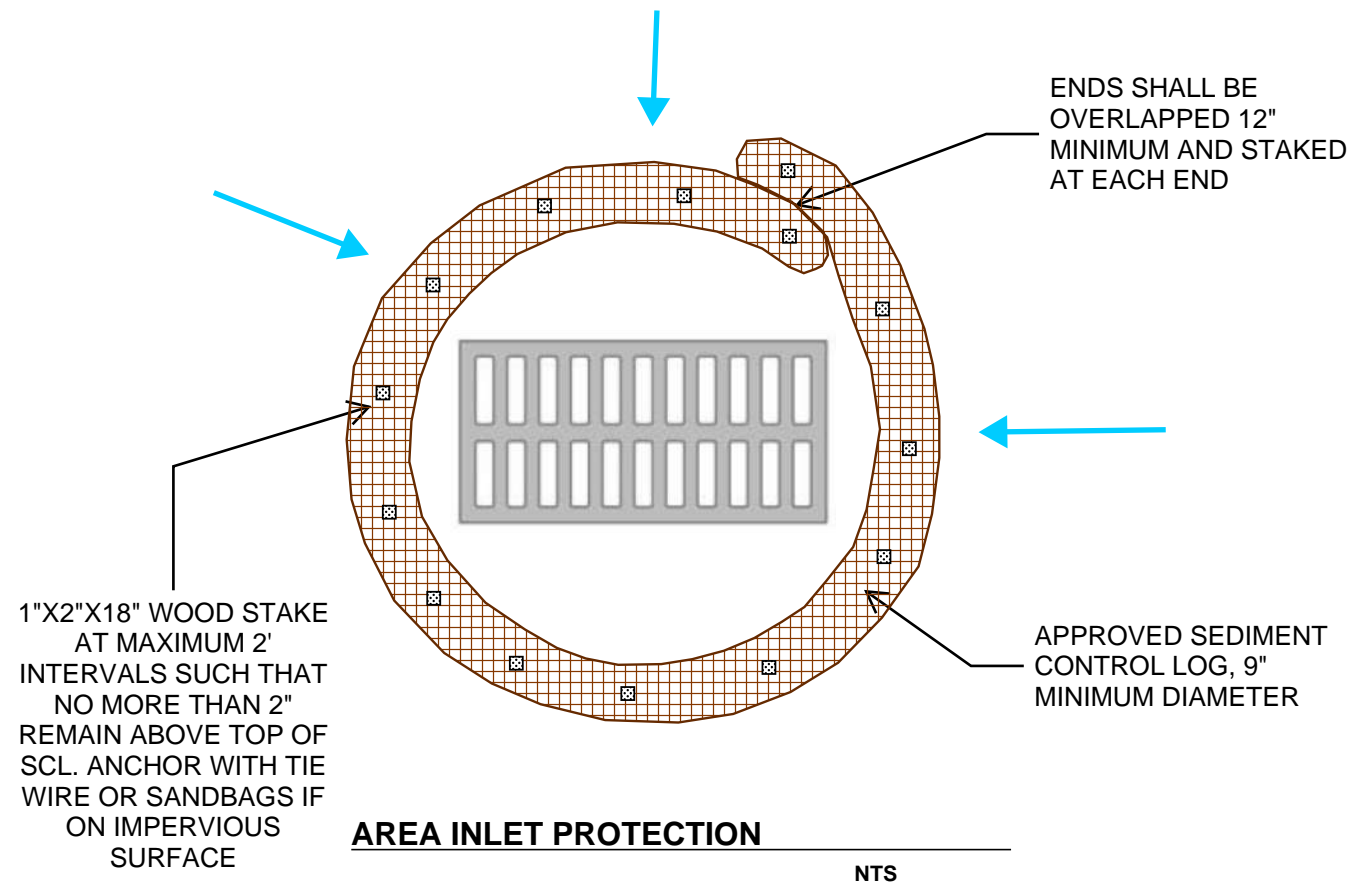


www.e2rc.com | 505.867.4040



SHEET:

5

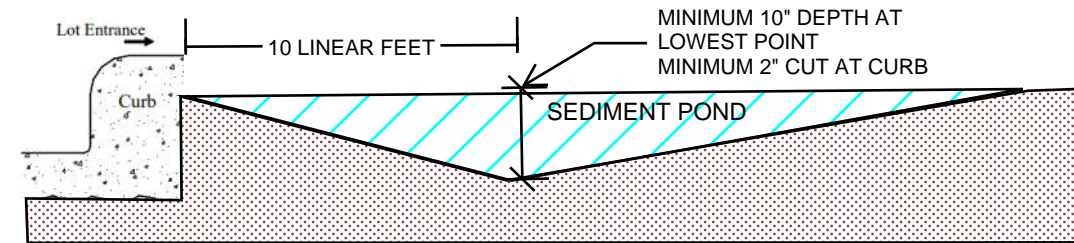


THE MAT SHOULD EXTEND A MINIMUM OF 1" PAST ALL EDGES OF THE INLET. PLACE MAT AGAINST THE CURB INLET.

PLACE WATTLES ON TOP OF THE MAT CLOSEST TO THE INLET OPENING AND CURB.

THE MAXIMUM HEIGHT OF THE PROTECTIVE BARRIER MUST BE LOWER THAN THE TOP OF THE CURB OPENING. THIS ALLOWS OVERFLOW INTO THE INLET DURING LARGE PRECIPITATION EVENTS.

ANCHOR THE BARRIER NETTING OVER THE CURB WITH WOODEN STAKES IF ABLE. IF UNABLE TO DO THAT ANCHOR THE WATTLE WITH SAND BAGS ON EACH END.



CUTBACK CURB

NTS

CUTBACK CURBS SHOULD TYPICALLY BE INSTALLED AT THE SITE ENTRANCE WHEN ACCESS IS NEEDED.

SOIL SHOULD BE CUT BACK FROM BEHIND THE CURB, SIDEWALK OR ROADWAY A MINIMUM 2" DOWN FROM THE TOP OF THE HARDSCAPE.

BRING THE SOIL BACK >10 FEET FT FROM THE HARDSCAPE TO FORM THE SEDIMENT TRAP.

THE LOWEST POINT OF THE SEDIMENT POND SHALL BE AT LEAST 10 INCHES.

IF THE HOUSE PAD HAS BEEN STABILIZED, THE DEPTH OF THE SEDIMENT POND MAY BE REDUCED TO 4 INCHES.

THE DEPTH AND LENGTH OF THE EXCAVATED AREA CAN BE INCREASED IF MORE STORAGE IS NEEDED.

INSPECT BMPs PRIOR TO FORCAST PRICIPITATION, DAILY DURING PRECIPITATION EVENTS, AFTER PRECIPITATION EVENTS AND THROUGH THE LIFE OF THE PROJECT.

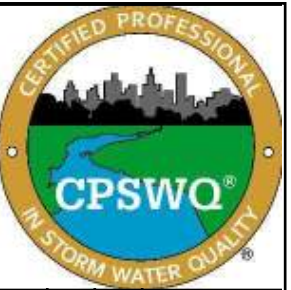
MAINTAIN PROPER DEPTH AND LENGTH OF THE CUTBACK FOR THE DURATION OF THE PROJECT.

KEEP CUTBACK AREA CLEAN AND FREE OF TRASH AND DEBRIS.



SWPPP
Stormwater
Erosion Control
Reclamation
Seeding

www.e2rc.com | 505.867.4040



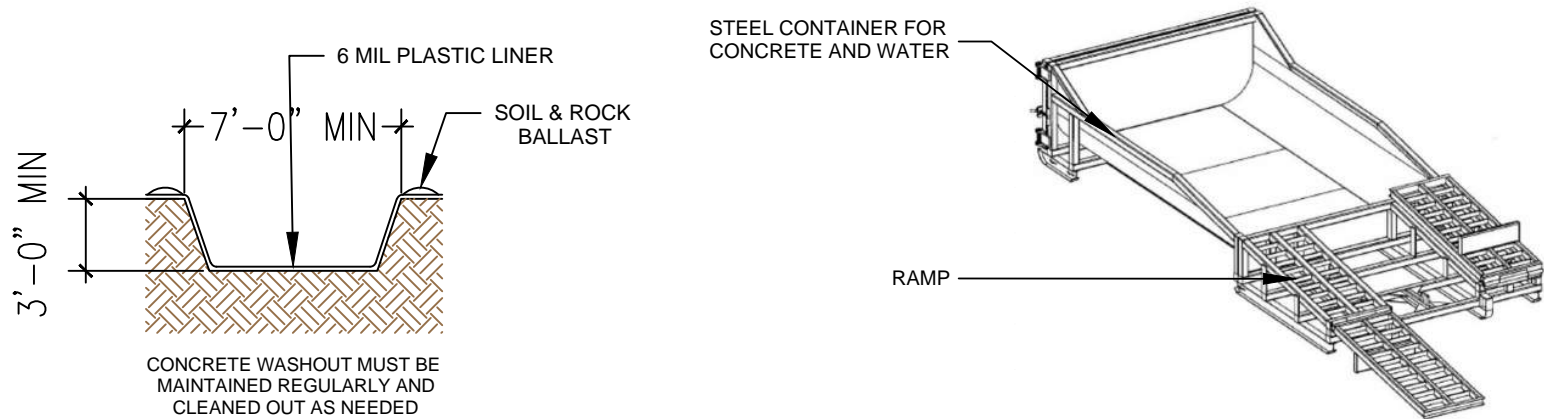
DATE	REVISION ITEM	#

FRANKLIN'S EARTHMOVING, INC.
VENTANA RANCH PAVING &
UTILITY IMPROVEMENTS
BMP DETAILS

DESIGNED BY:
K. FETTER, P.E.
DRAWN BY:
S. FETTER

SHEET:

6



CONCRETE WASHOUT

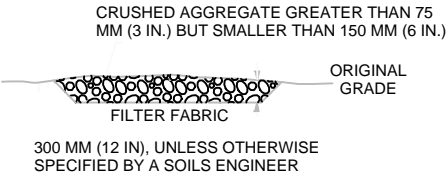
LOCATE WASHOUT AT LEAST 50 FT FROM STORMDRAINS, OPEN DITCHES, WATER BODIES OR PROJECT PERIMETER. A SIGN SHOULD BE INSTALLED ADJACENTLY TO THE WASHOUT.

WASH OUT WASTE INTO THE WASHOUT WHERE THE CONCRETE CAN SET, BE BROKEN UP AND DISPOSED OF CORRECTLY.

DO NOT CREATE RUNOFF BY DRAINING WATER TO BERMED AREA OR BY COLLECTING THE WATER WASTE WHEN WASHING CONCRETE TO REMOVE PARTICLES AND EXPOSE THE AGGREGATE.

DO NOT WASH SWEEPINGS FROM EXPOSED AGGREGATE CONCRETE INTO THE STREET, STORMDRAIN SYSTEMS OR OFF THE PROJECT SITE.

MODULAR CONCRETE WASHOUT



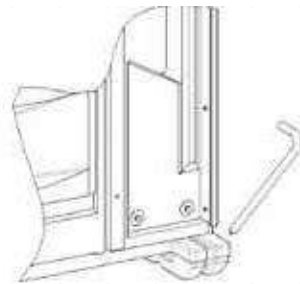
STABILIZED CONSTRUCTION ENTRANCE

CONSTRUCT THE ENTRANCE ON A LEVEL SURFACE WHERE AN UNPAVED ROAD MEETS A PAVED ROAD. TYPICALLY AT PROJECTS ACCESS AREA.

GRADE THE ENTRANCE TOWARD THE CONSTRUCTION SITE TO PREVENT RUNOFF.

INSPECT THE ENTRANCE TO KEEP TRASH AND DEBRIS OUT OF THE WAY.

AFTER PRECIPITATION EVENTS, INSPECT THE ENTRANCE FOR ANY REPAIRS THAT MAY BE NEEDED.



PORTABLE TOILET STAKING

PLACE THE PORTABLE TOILET ON LEVEL GROUND. A FLAT PAVED SURFACE IS BEST IF AVAILABLE.

DRIVE THE STAKES OVER THE SKIDS OF THE PROTABLE TOILET, AROUND ALL SIDES.

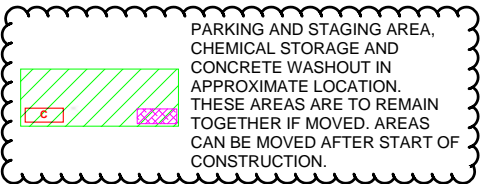


NPDES POSTING BOARD

- POST - CONSTRUCTION FLOW
- PRE - CONSTRUCTION FLOW
- SILT FENCE
- WATTLE OR SOCK
- SPOILS PILE PROTECTION
- EARTHEN BERM
- INLET PROTECTION
- NATURAL BUFFER
- PARKING AND STAGING AREA

- CONCRETE WASHOUT
- STABILIZED CONSTRUCTION ENTRANCE
- VEGETATIVE STABILIZATION
- ENDANGERED/THREATENED SPECIES
- CHEMICAL STORAGE
- CHECK DAM

- TEMP TOILET
- LOCATION FOR PUBLIC NOTIFICATION OF NPDES
- PROJECT BOUNDARY
- DISTURBED AREA
- PROJECT AND DISTURBED BOUNDARY
- CULVERT BLANKET
- CUTBACK CURB

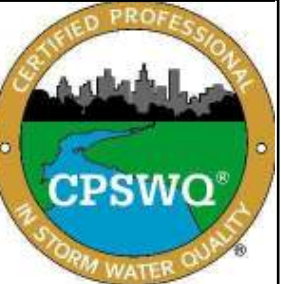


DRAWING KEY



- SWPPP
- Stormwater
- Erosion Control
- Reclamation
- Seeding

www.e2rc.com | 505.867.4040



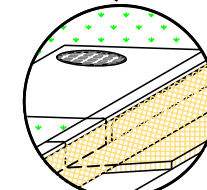
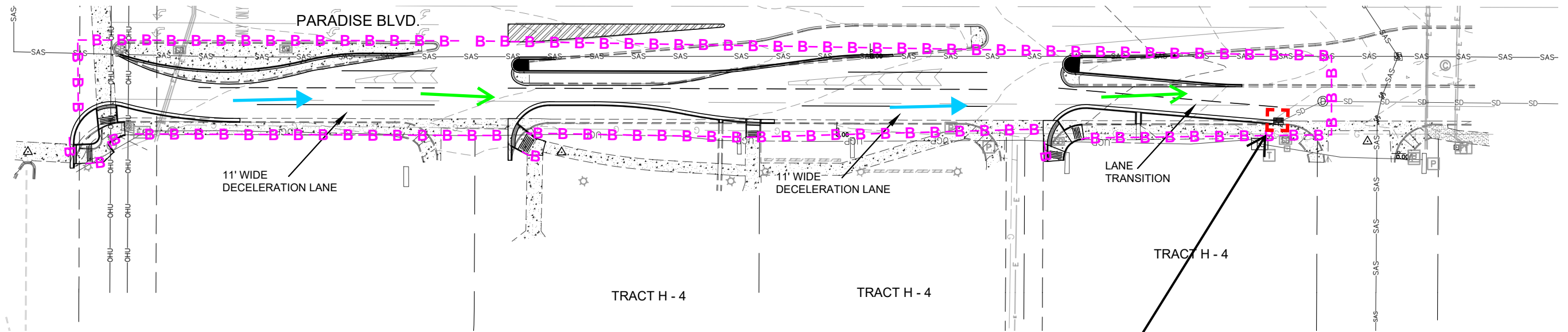
DATE

REVISION ITEM

FRANKLIN'S EARTHMOVING, INC.
VENTANA RANCH PAVING &
UTILITY IMPROVEMENTS
BMP DETAILS

DESIGNED BY:
K. FETTER, P.E.
DRAWN BY:
S. FETTER

SHEET:
7



INLET PROTECTION

IMPLEMENTATION	
BMP INSTALL	BMP REMOVE
FINAL STABILIZATION	



- SWPPP
- Stormwater
- Erosion Control
- Reclamation
- Seeding

www.e2rc.com | 505.867.4040



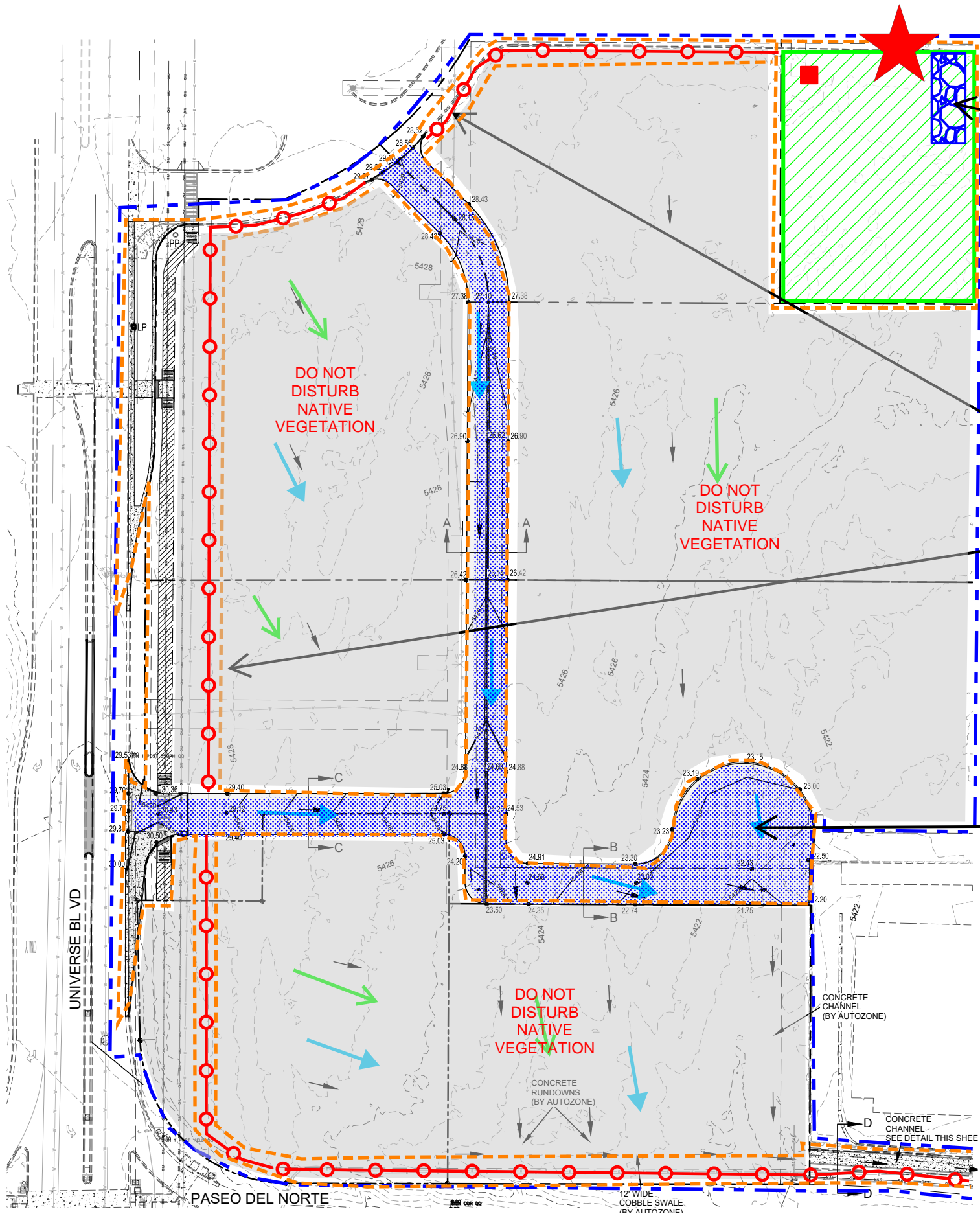
DATE	REVISION ITEM	#

FRANKLIN'S EARTHMOVING, INC.
VENTANA RANCH PAVING &
UTILITY IMPROVEMENTS
TESCP

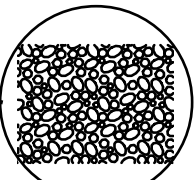
DESIGNED BY:
K. FETTER, P.E.
DRAWN BY:
S. FETTER

SHEET:

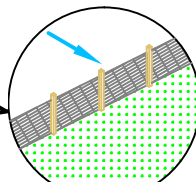
8



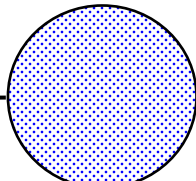
ANY AREA DISTURBED OUTSIDE THE INDICATED LIMITS OF DISTURBANCE WHICH WILL REMAIN INACTIVE FOR 14 - CALENDAR DAYS OR MORE WILL BE STABILIZED WITH TACKIFIER AND WEST SIDE SEED MIX.


STABILIZED CONSTRUCTION
ENTRANCE

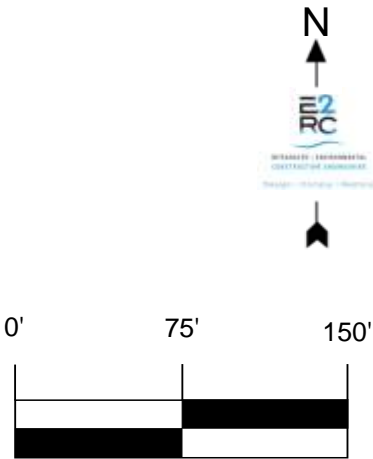
IMPLEMENTATION	
BMP INSTALL	BMP REMOVE
FINAL STABILIZATION	


SILT FENCE

IMPLEMENTATION	
BMP INSTALL	BMP REMOVE
FINAL STABILIZATION	


ASPHALT PAVING

IMPLEMENTATION	
FINAL STABILIZATION	



- SWPPP
Stormwater
Erosion Control
Reclamation
Seeding

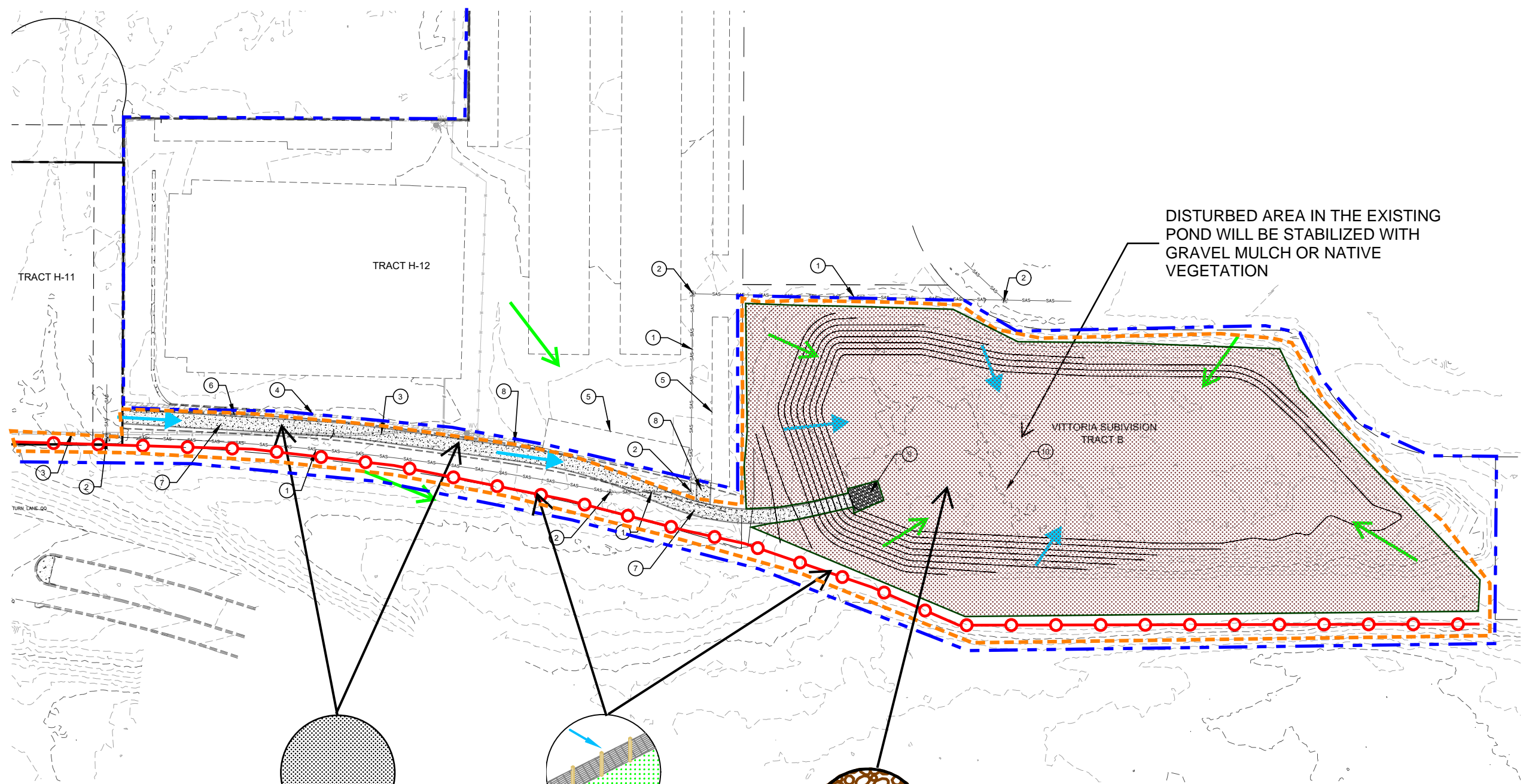


REVISION ITEM				DATE

FRANKLIN'S EARTHMOVING, INC.
VENTANA RANCH PAVING &
UTILITY IMPROVEMENTS
TESCP

DESIGNED BY:
K. FETTER, P.E.
DRAWN BY:
S. FETTER

SHEET:



DISTURBED AREA IN THE EXISTING POND WILL BE STABILIZED WITH GRAVEL MULCH OR NATIVE VEGETATION

CONCRETE CHANNEL

FINAL STABILIZATION

SILT FENCE

IMPLEMENTATION	
BMP INSTALL	BMP REMOVE
FINAL STABILIZATION	

GRAVEL MULCH

FINAL STABILIZATION



e2rc

SWPPP
Stormwater
Erosion Control
Reclamation
Seeding

www.e2rc.com | 505.867.4040



DATE	REVISION ITEM	#

FRANKLIN'S EARTHMOVING, INC.
VENTANA RANCH PAVING &
UTILITY IMPROVEMENTS
TESCP

DESIGNED BY:
K. FETTER, P.E.
DRAWN BY:
S. FETTER

SHEET:
10