

**COUNTRY HILLS SUBDIVISION
UNIT 1
AT VENTANA RANCH**
AUGUST 15, 1936
(196-557)

**UNIVERSE BOULEVARD NW
(R/W VARIES)**

**FUTURE
UNIVERSE
BLVD. NW**

**TRACT C
PLAT OF
VENTANA RANCH**
FILED: NOVEMBER 30, 1995
(195C-4301)

**GROSS HATCHED AREA DESIGNATES EXISTING
TEMPORARY PUBLIC ROADWAY EASEMENT
VACATED BY VACATION ACTION**
FILED: DECEMBER 3, 2001 (2001C-3151)

FUTURE PARADISE BOULEVARD NW

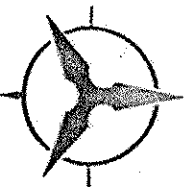
PARADISE BOULEVARD NW (63' RW)

ACS BRASS TABLET STAMPED "2-810 1980"
GEOGRAPHIC POSITION (NAD 1983)
NAD STATE PLANE COORDINATES (CENTRAL ZONE)
X=517,543.73 Y=1,527,916.48
GROUND TO GRID FACTOR = 0.99965354
DELTA ALPHA = -00°16'30"
NGVD 1929 ELEVATION = 5429.35

**PLAT OF
TRACTS H-1 THRU H-11
VENTANA SQUARE
AT VENTANA RANCH**
(A REPLAT OF TRACT H-A, VENTANA RANCH)
ABUQUERQUE, NEW MEXICO
JANUARY, 2003

2883925788
Page: 2 of 3
832/04/2893 82:34P
BORN: Co. PLRT R 17 88 BK-8833C Pg-58
HARRY HERRERA

SCALE: 1" = 60'



TANGENT DATA

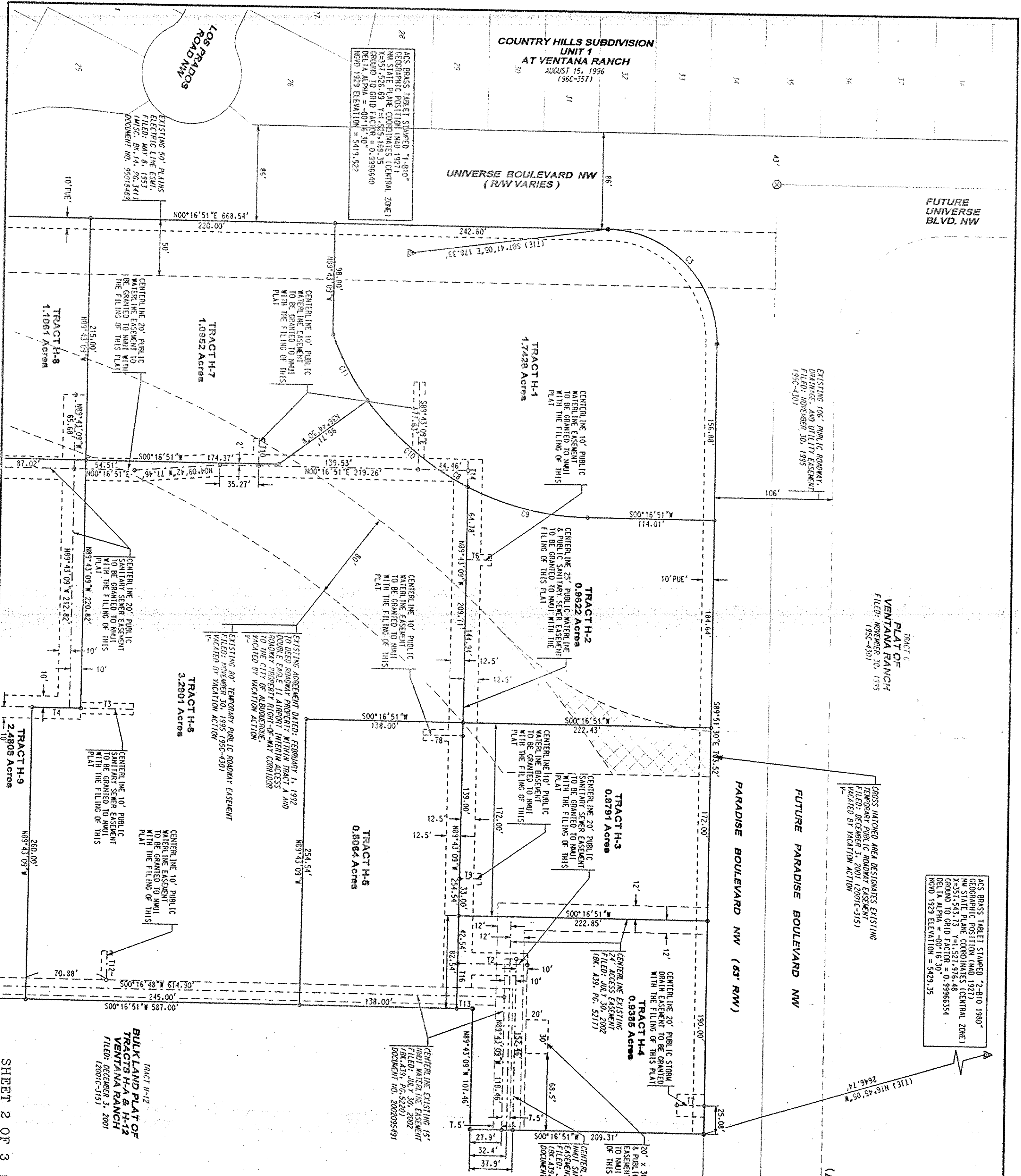
ID	BEARING	DISTANCE
11	S89°43'09"E	30.35'
12	N00°16'51"W	61.90'
13	S00°16'51"W	48.00'
14	N00°16'51"W	42.00'
15	S00°16'51"W	42.28'
16	S00°16'51"W	52.44'
17	S00°13'22"W	24.44'
18	N00°16'51"W	35.00'
19	S00°16'51"W	18.95'
110	S89°43'09"E	24.35'
111	S00°16'51"W	31.17'
112	S89°43'09"E	25.80'
113	S00°16'51"W	14.00'
114	S89°43'09"E	24.74'
115	S89°43'09"E	7.15'
116	S89°43'09"E	21.50'

CURVE DATA

ID	DELTA	TANGENT	ARC	RADIUS	CHORD	CHORD BNG
C1	00°09'34"	2.19'	4.39'	1578.00'	4.39'	N89°44'01"W
C2	88°33'08"	91.50'	154.59'	100.00'	139.62'	N45°12'14"W
C3	89°51'38"	99.76'	156.84'	100.00'	141.25'	N45°12'40"E
C4	01°06'23"	2.66'	5.31'	215.00'	5.31'	S19°25'03"E
C5	13°08'42"	46.38'	81.60'	215.00'	91.46'	S09°17'30"E
C6	17°32'04"	61.80'	113.60'	215.00'	119.33'	S13°13'E
C7	17°32'04"	61.80'	113.60'	215.00'	119.33'	S13°13'E
C8	69°06'55"	56.80'	239.13'	245.00'	218.10'	N84°51'39"E
C9	28°06'55"	56.80'	239.13'	245.00'	218.10'	N84°51'39"E
C10	27°31'31"	60.01'	117.10'	245.00'	118.51'	S10°11'51"W
C11	15°29'12"	33.31'	66.22'	245.00'	58.02'	S61°41'52"W

LEGEND

- SUBDIVISION BOUNDARY LINE
- NEW TRACT LINE
- EXISTING EASEMENT LINE
- PROPOSED EASEMENT LINE
- ADJOINING PROPERTY LINE
- RIGHT OF WAY LINE
- CITY OF ALBUQUERQUE CONTROL MONUMENT
- 5/8" REBAR WITH 1 1/4" YELLOW PLASTIC SURVEY CAP STAMPED "WEAVER LS 6544"
- CHISELED "X" ON TOP OF MANHOLE
- 10' PUBLIC UTILITY EASEMENT TO BE GRANTED WITH THE FILING OF THIS PLAT



Bohannon & Histon
Surveyors
7500 Jefferson St. NE Albuquerque, NM 87109-4335
SHEET 2 OF 3
ENGINEERING & SPATIAL DATA & ADVANCED TECHNOLOGIES

