

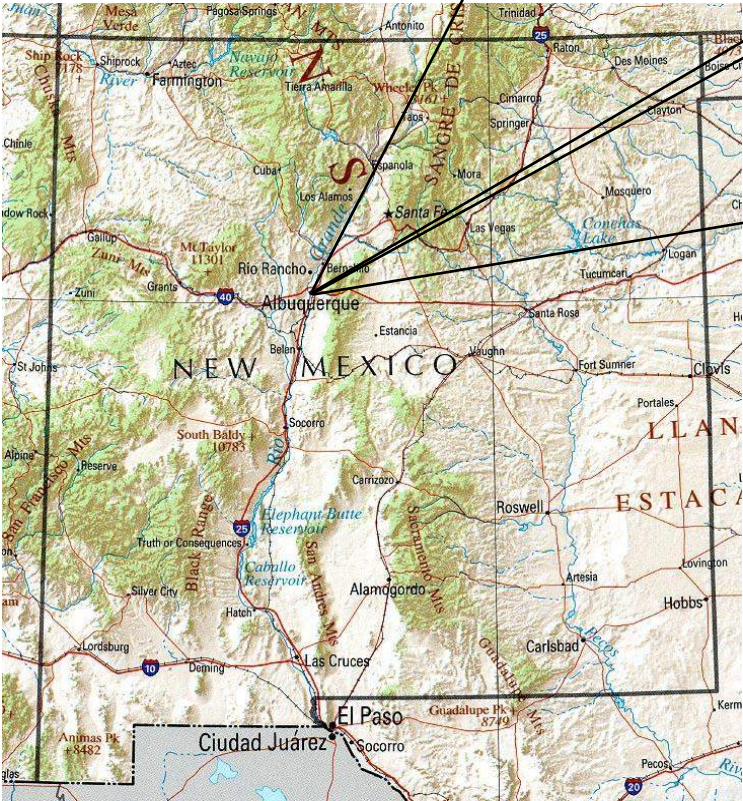
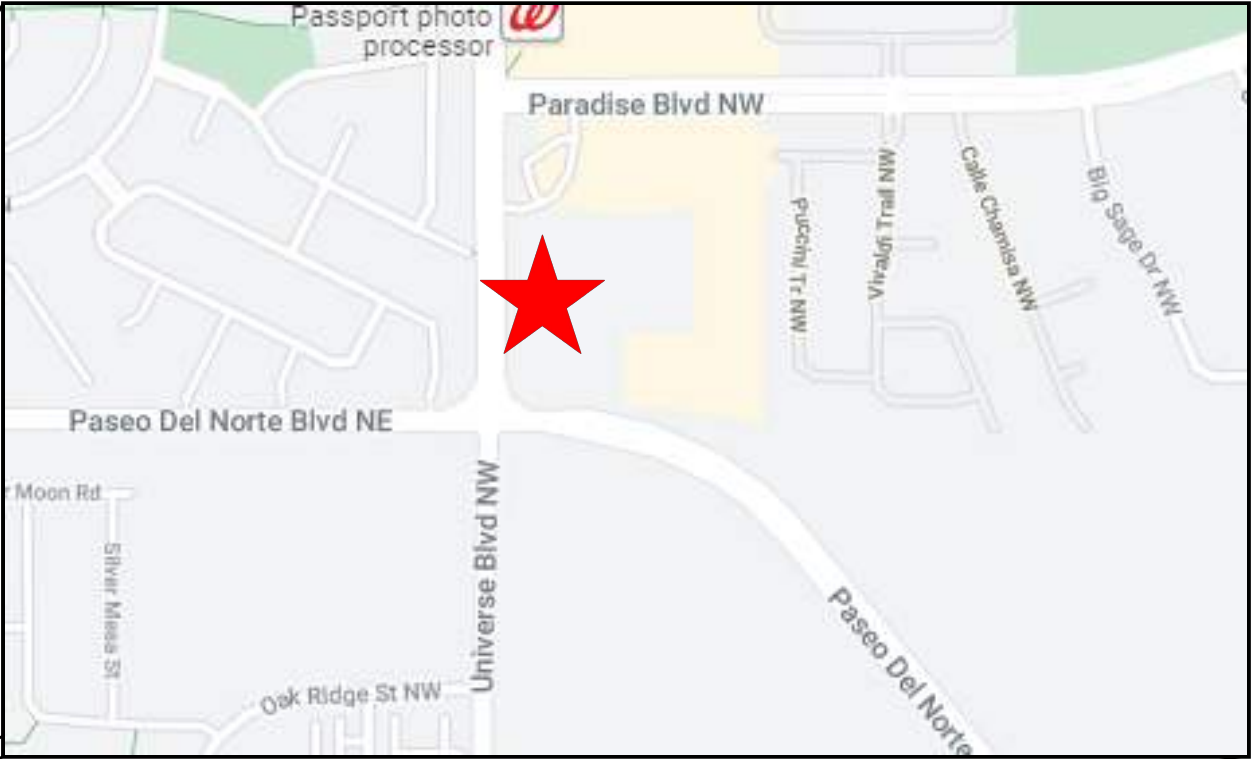
DUTCH BROTHERS COFFEE (NM0106)

TEMPORARY SEDIMENT AND EROSION CONTROL DRAWINGS

ALBUQUERQUE, BERNALILLO COUNTY, NM

DRAWING INDEX

- 1 COVER SHEET
- 2 PROJECT DETAILS
- 3 GENERAL NOTES
- 4 BEST MANAGEMENT PRACTICES
- 5 BEST MANAGEMENT PRACTICES
- 6 BEST MANAGEMENT PRACTICES
- 7 BEST MANAGEMENT PRACTICES
- 8 TEMPORARY EROSION & SEDIMENT CONTROL PLAN
- 9 FINAL STABILIZATION



SWPPP
Stormwater
Erosion Control
Reclamation
Seeding

www.e2rc.com | 505.867.4040



DATE	REVISION ITEM	#

TANGLEWOOD CONSTRUCTION
DUTCH BROTHERS COFFEE
(NM0106)
ALBUQUERQUE, NM

DESIGNED BY:
K. FETTER, P.E.
DRAWN BY:
S. FETTER

SHEET:
COVER

PROJECT DETAILS

NPDES ID: NMR1004FM, NMR1004FT

ADDRESS: 9600 UNIVERSE BLVD NW, ALBUQUERQUE, NM 87114

GPS COORDINATES: 35.190140, -106.727141

TOTAL ACREAGE: 1.1

ANTICIPATED DISTURBED ACREAGE: 1.1

FIRST RECEIVING WATERS: UNNAMED WATER

WATERS WITHIN ONE MILE OF PROJECT: NONE

IMPAIRED/TIERED WATERS: NONE

ENDANGERED SPECIES: CRITERION A

SUPPORT ACTIVITIES: SEE SECTION 3.6 OF SWPPP NARRATIVE

SOIL TYPE: SEE NRCS SOIL REPORT PROVIDED IN SWPPP BINDER

TYPE OF PRE-CONSTRUCTION COVER: WEEDS AND NATIVE VEGETATION, APPROXIMATELY <50% DENSITY COVERAGE

STABILIZATION MEASURES AND DEADLINES: SEE SECTION 6.0 OF SWPPP NARRATIVE

REGULATING AUTHORITY: ENVIRONMENTAL PROTECTION AGENCY (EPA)

REGULATING PERMIT: 2017 CONSTRUCTION GENERAL PERMIT

OPERATORS

PROPERTY OWNER:
PASEO DEL NORTE DB, LLC
1776 MONTANO BLVD, STE 25
ALBUQUERQUE, NM 87107

OWNER CONTACT:
MAKO KELLMAN
(505) 341-9115
MKELLMAN@SWCP.COM

GENERAL CONTRACTOR (GC):
TANGLEWOOD CONSTRUCTION, INC.
P.O. BOX 44333
RIO RANCHO, NM 87174

GC CONTACT:
R. TODD GRANATH
(505) 688-0495
TODDG@TANGLEWOODCONSTRUCTIONNM.COM

STORMWATER TEAM

SEE SECTION 2.0 OF THE SWPPP NARRATIVE FOR THE PROJECT'S STORMWATER TEAM, RESPONSIBILITIES AND CONTACT INFORMATION

SEQUENCE OF ACTIVITIES

REFER TO THE ANTICIPATED CONSTRUCTION SCHEDULE INCLUDED WITH THE SWPPP BINDER

PHASE I: SITE PREPARATION AND PRE – CONSTRUCTION

- 1.PRIOR TO BEGINNING EARTH DISTURBING ACTIVITIES, THE OPERATOR(S) WILL CLEARLY DEMARCATATE THE LIMITS OF DISTURBANCE WITH STAKES, RIBBONS, CONSTRUCTION FENCING, OR OTHER APPROPRIATE METHOD. THESE DEMARCATATIONS SHALL REMAIN VISIBLE FOR THE DURATION OF THE PROJECT.
- 2.THE INITIAL EROSION CONTROL MEASURES SHALL BE INSTALLED PRIOR TO EARTH DISTURBANCE. THE INITIAL CONTROL MEASURES MAY INCLUDE BUT ARE NOT LIMITED TO:
- a. PERIMETER CONTROLS (E.G., SILT FENCE, WATTLES, CONSTRUCTION FENCE)
 - b. VEHICLE TRACKING PAD IF THE SITE ENTERS/EXITS ONTO A PAVED PUBLIC ROADWAY
 - c. NPDES NOTIFICATION POSTING
 - d. DESIGNATED STAGING AREA
 - e. ANCHORED SANILETS
 - f. DUMPSTERS

PHASE II: CONSTRUCTION ACTIVITIES

- 1.THE OPERATORS WILL MINIMIZE THE AREA DISTURBED AS MUCH AS FEASIBLY POSSIBLE.
- 2.ANY DISTURBED AREA IN WHICH CONSTRUCTION ACTIVITIES HAVE TEMPORARILY CEASED SHALL TEMPORARILY STABILIZED USING THE METHODS DESCRIBED IN SECTION 6.4 OF THE SWPPP NARRATIVE. SECTION 6.3 OF THE SWPPP NARRATIVE PROVIDES THE TEMPORARY STABILIZATION DEADLINES.
- 3.THE LOCATION OF SOME BMPS MAY REQUIRE ALTERATION IF DRAINAGE PATTERNS CHANGE DURING CONSTRUCTION. THE OPERATORS SHALL INSTALL ADDITIONAL BMPS OR UPGRADE BMPS IF NECESSARY.
- 4.IF CONCRETE IS USED ONSITE AND CONCRETE TRUCKS ARE UNABLE TO WASHOUT OFFSITE, THE OPERATORS WILL PROVIDE ONE OR MORE DESIGNATED CONCRETE WASHOUT AREAS. THE CONCRETE WASHOUTS MUST BE INSTALLED PRIOR TO CONCRETE USE ONSITE AND REMOVED ONLY AFTER CONCRETE WORK IS COMPLETE.

PHASE III: FINAL STABILIZATION AND CONSTRUCTION COMPLETION

- 1.IF APPLICABLE, REVEGETATION OR LANDSCAPING SHALL BE INITIATED IMMEDIATELY UPON KNOWING WORK IN A DISTURBED AREA HAS PERMANENTLY STOPPED AND THE AREA IS NOT COVERED BY PERMANENT STRUCTURES, UNLESS INFEASIBLE. SECTION 6.5 OF THE SWPPP NARRATIVE DISCUSSES PERMANENT STABILIZATION AND ASSOCIATED DEADLINES.
- 2.THE OPERATORS SHALL REMOVE TEMPORARY BMPS ONLY AFTER FINAL STABILIZATION IS COMPLETE.



					DATE
					REVISION ITEM
					#

TANGLEWOOD CONSTRUCTION
DUTCH BROTHERS COFFEE
(NM0106)
SWPPP NOTES

DESIGNED BY:
K. FETTER, P.E.
DRAWN BY:
S. FETTER

SHEET:
GENERAL
NOTES

GENERAL NOTES

THE NPDES COMPLIANCE SWPPP DRAWING AND ASSOCIATED DOCUMENTATION IS AND SHALL BE CONSIDERED A LIVING DOCUMENT ALLOWING FOR MODIFICATIONS AS SITE CONDITIONS CHANGE OR DICTATE.

ALL SITE FEATURES (EXISTING/PROPOSED GRADES, EXISTING CONSTRUCTION, FUTURE CONSTRUCTION, ETC.) SHOWN IS PER INFORMATION FROM OTHERS.

MINIMUM REQUIREMENTS TO FURTHER DEVELOP OR MODIFY THIS STORMWATER POLLUTION PREVENTION PLAN (SWPPP) DRAWING SHALL BE BASED ON THE CURRENT EDITION OF THE NEW MEXICO STATE HIGHWAY AND TRANSPORTATION DEPARTMENT (NMSHTD), NPDES LAW AND CITY OF ALBUQUERQUE ORDINANCE § 14-5-2-11.

ALL OPERATORS SHALL SUBMIT A NOTICE OF INTENT (NOI). THE NOI SHALL BE ACTIVE AND POSTED ON THE EPA'S WEBSITE PRIOR TO COMMENCING EARTH DISTURBING ACTIVITIES.

LOCATE TEMPORARY WASHOUT, ANCHORED TOILETS, CONSTRUCTION ENTRANCE AND PARKING, STAGING, REFUELING, TRASH CONTAINMENT AREA TO MINIMIZE SITE DISTURBANCE DURING CONSTRUCTION ACTIVITY.

THE OPERATOR IS REQUIRED TO REGULARLY PERFORM STREET SWEEPING AND CLEAN - UP MEASURES IN THE EVENT OF SEDIMENT TRACK - OUT.

THE FOLLOWING ARE STANDARD EROSION CONTROL REQUIREMENTS PER THE CITY OF ALBUQUERQUE STORMWATER QUALITY DEPARTMENT (MARCH 24, 2021):

ALL EROSION AND SEDIMENT CONTROL (ESC) WORK ON THESE PLANS, EXCEPT AS OTHERWISE STATED OR PROVIDED HEREON SHALL BE PERMITTED, CONSTRUCTED, INSPECTED, AND MAINTAINED IN ACCORDANCE WITH:

THE CITY ORDINANCE § 14-5-2-11, THE ESC ORDINANCE;
THE EPA'S 2017 CONSTRUCTION GENERAL PERMIT (CGP); AND
THE CITY OF ALBUQUERQUE CONSTRUCTION BMP MANUAL

ALL TEMPORARY SEDIMENT AND EROSION CONTROL MEASURES MUST BE INSTALLED PRIOR TO BEGINNING ANY EARTH MOVING ACTIVITIES EXCEPT AS SPECIFIED HEREON IN THE PHASING PLAN. CONSTRUCTION OF EARTHEN BMPS SUCH AS SEDIMENT TRAPS, SEDIMENT BASINS, AND DIVERSION BERMS SHALL BE COMPLETED AND INSPECTED PRIOR TO ANY OTHER CONSTRUCTION OR EARTHWORK. SELF-INSPECTION IS REQUIRED AFTER INSTALLATION OF THE BMPS AND PRIOR TO BEGINNING CONSTRUCTION.

SEE SECTION 3.5 OF THE SWPPP NARRATIVE OR THE CONTRACTOR'S SCHEDULE (TAB II OF SWPPP BINDER) FOR BMP SCHEDULING OR PHASING.

SELF-INSPECTIONS - AT A MINIMUM A ROUTINE COMPLIANCE SELF-INSPECTION IS REQUIRED TO REVIEW THE PROJECT FOR COMPLIANCE WITH THE CONSTRUCTION GENERAL PERMIT ONCE EVERY 14 DAYS AND AFTER ANY PRECIPITATION EVENT OF 1/4 INCH OR GREATER UNTIL THE SITE CONSTRUCTION HAS BEEN COMPLETED AND THE SITE DETERMINED AS STABILIZED BY THE CITY. REPORTS OF THESE INSPECTIONS SHALL BE KEPT BY THE PERSON OR ENTITY AUTHORIZED TO DIRECT THE CONSTRUCTION ACTIVITIES ON THE SITE AND MADE AVAILABLE UPON REQUEST.

CORRECTIVE ACTION REPORTS MUST BE KEPT BY THE PERSON OR ENTITY AUTHORIZED TO DIRECT THE CONSTRUCTION ACTIVITIES ON THE SITE AND MADE AVAILABLE UPON REQUEST.

STABILIZATION REPORTS MUST BE KEPT BY THE PERSON OR ENTITY AUTHORIZED TO DIRECT THE CONSTRUCTION ACTIVITIES ON THE SITE AND MADE AVAILABLE UPON REQUEST. REPORTS SHOULD INCLUDE RECORDS OF WEED REMOVAL PER CITY ORDINANCE (§ 9-8-1), STERILIZATION, SOIL TEST RESULTS AND RECOMMENDATION, MATERIALS AND MANUFACTURER'S SPECIFICATIONS FOR APPLICATION RATES, ESTIMATED FUNCTIONAL LONGEVITY, METHODS OF APPLICATION, INSPECTION AND MAINTENANCE. THE REDUCED SELF-INSPECTION SCHEDULE IN CGP 4.4.1 APPLIES TO STABILIZED AREA AND ANY DAMAGED OR WORN STABILIZATION MUST BE IDENTIFIED IN THE REPORTS ALONG WITH WEED PROBLEMS. CORRECTIVE ACTIONS FOR STABILIZATION SHALL BE DOCUMENTED IN A STABILIZATION REPORT INCLUDING ACTUAL RATES AND DATES OF STABILIZATION, AND THE MATERIALS AND MANUFACTURER'S SPECIFICATIONS USED.

BMPS SHALL BE INSPECTED AND MAINTAINED UNTIL ALL DISTURBED AREAS ARE STABILIZED IN ACCORDANCE WITH THE FINAL STABILIZATION CRITERIA (CGP 2.2.14.B). GENERALLY, ALL DISTURBED AREAS, OTHER THAN STRUCTURES AND IMPERVIOUS SURFACES, MUST HAVE UNIFORM PERENNIAL VEGETATION THAT PROVIDES 70 PERCENT OR MORE OF THE COVER PROVIDED BY NATIVE VEGETATION OR SEED THE DISTURBED AREA AND PROVIDE NON-VEGETATIVE MULCH THAT PROVIDES COVER FOR AT LEAST THREE YEARS WITHOUT ACTIVE MAINTENANCE. FINAL STABILIZATION MUST BE APPROVED BY THE CITY OF ALBUQUERQUE PRIOR TO REMOVAL OF BMPS AND DISCONTINUATION OF INSPECTIONS.



					DATE
					REVISION ITEM
					#

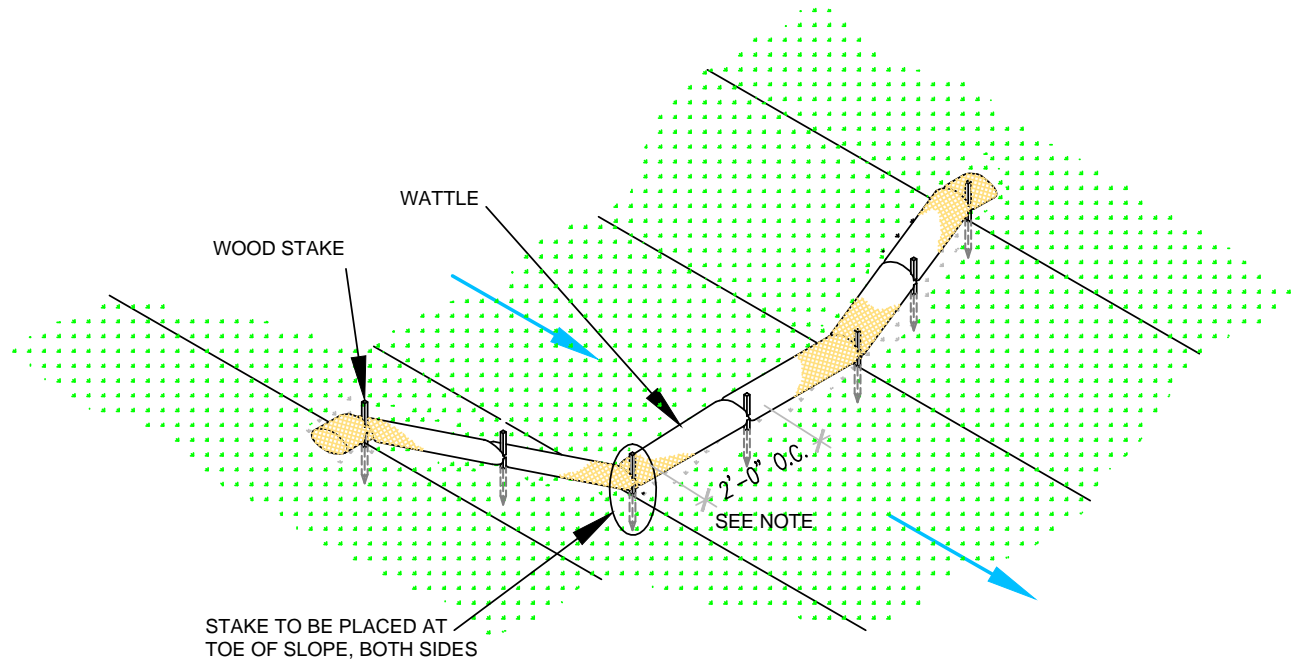
TANGLEWOOD CONSTRUCTION
DUTCH BROTHERS COFFEE
(NM0106)
SWPPP NOTES



www.e2rc.com | 505.867.4040

DESIGNED BY:
K. FETTER, P.E.
DRAWN BY:
S. FETTER

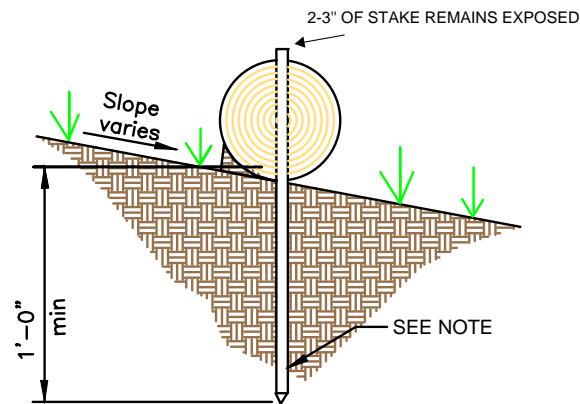
SHEET:
GENERAL
NOTES



WATTLE WITHOUT BLANKET

NTS

2' FOR DRAWING ONLY. 8' MAX
SPACING BETWEEN STAKES



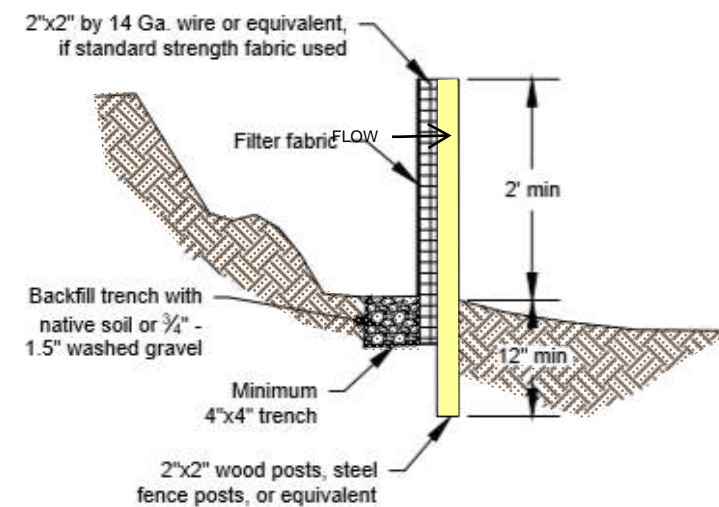
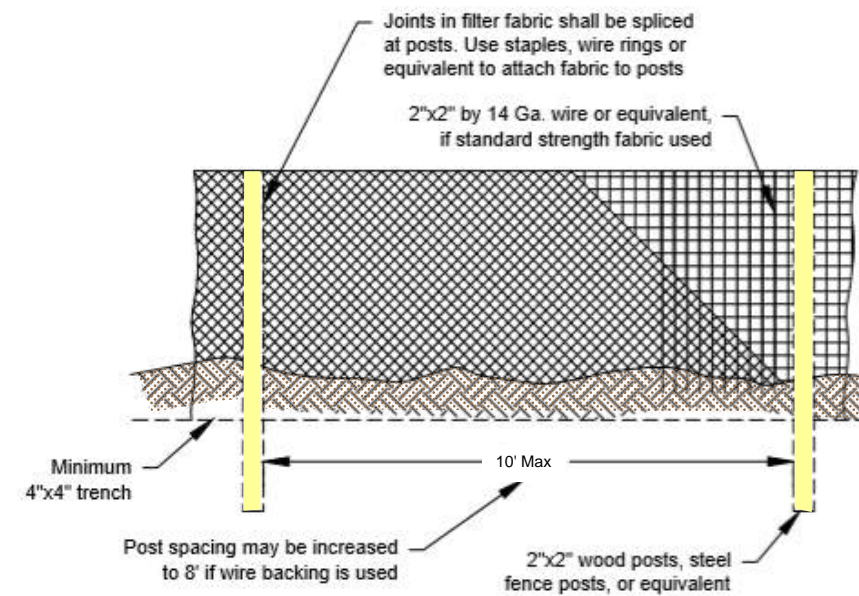
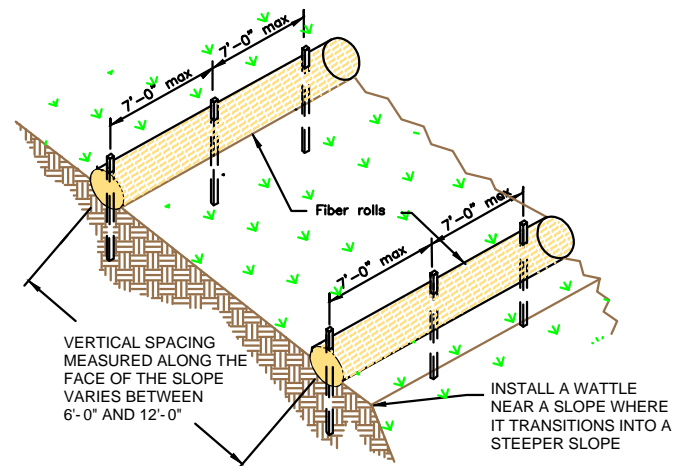
WATTLE

NTS

SECURE WATTLE WITH 18-24" STAKES EVERY 3-4' AND STAKES ON EACH END OF THE WATTLE.

DRIVE STAKES PERPENDICULAR TO THE SLOPE FACE AND THROUGH THE MIDDLE OF THE WATTLE LEAVING AT LEAST 2-3" OF THE STAKE ABOVE THE WATTLE.

VERTICAL SPACING DEPENDENT ON SLOPE GRADIENT.



SILT FENCE

NTS

SILT FENCE IS TO BE PLACED PERPENDICULAR TO THE SLOPE OF THE SITE.

DIG A 4"X4" MINIMUM TRENCH UPSTREAM OF THE SILT FENCE. DRIVE STAKES AT LEAST 1' DEEP ON THE DOWNSTREAM EDGE.

RUN THE SILT FENCE ON THE INSIDE OF THE STAKES AND SECURE WITH HOG RINGS, WIRE, ZIP TIES OR STAPLES.

IF ONE CONTINUOUS PIECE OF FABRIC IS NOT AVAILABLE, OVERLAP THE FABRIC AT LEAST THE WIDTH OF THE STAKE AND SECURE WITH HOG RINGS, WIRE, ZIP TIES OR STAPLES.

COVER TRENCH WITH BACKFILLED COMPACTED SOIL, GRAVEL OR ROCK.



DATE	REVISION ITEM	#

TANGLEWOOD CONSTRUCTION
DUTCH BROTHERS COFFEE
(NM0106)
BMP DETAILS

DESIGNED BY:
K. FETTER, P.E.
DRAWN BY:
S. FETTER

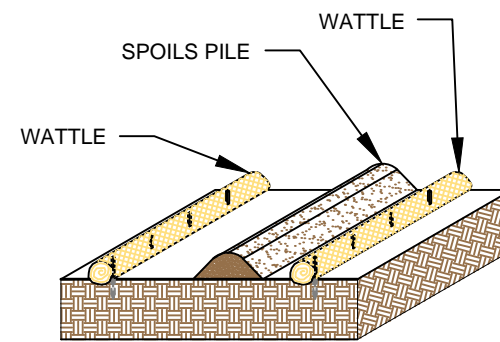
SHEET:

4



SWPPP
Stormwater
Erosion Control
Reclamation
Seeding

www.e2rc.com | 505.867.4040



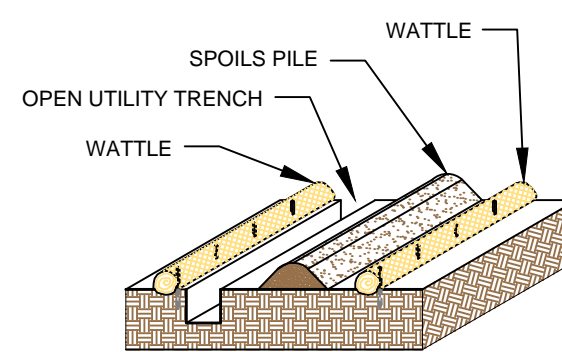
SPOILS PILE PROTECTION

PLACE WATTLES IN FUTURE LOCATIONS OF SPOILS STOCKPILES PRIOR TO CONSTRUCTION.

PLACE WATTLES CONTINUOUSLY ALONG THE EXTENT OF THE SPOILS STOCKPILE.

ANCHOR THE WATTLES USING A MINIMUM OF 1" X 2" X 18" WOODEN STAKES OR SAND BAGS.

ONCE/IF THE SPOILS STOCKPILE IS DEPLETED OR MOVED, REMOVE THE WATTLES AND REUSE THEM IN THE NEXT LOCATION.



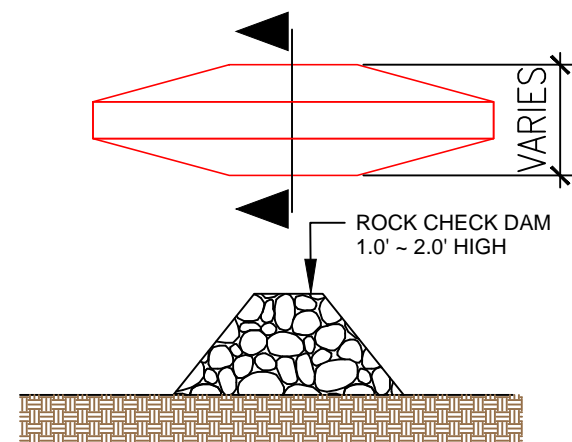
OPEN TRENCH SPOILS PILE PROTECTION

PLACE WATTLES CONTINUOUSLY ALONG THE EXTENT OF THE UTILITY TRENCH AND FUTURE LOCATION OF THE SPOILS STOCKPILE PRIOR TO EXCAVATION OF THE UTILITY.

WATTLES ARE TO REMAIN ANCHORED IN PLACE UNTIL THE UTILITY TRENCH IS BACKFILLED.

ANCHOR THE WATTLES USING A MINIMUM 1"X2"X18" WOODEN STAKE OR SANDBAGS.

ONCE THE TRANCH IS BACKFILLED, WATTLES MAY BE REMOVED AND REUSED IN THE NEXT SECTION OF EXCAVATION PROVIDED THEY ARE IN GOOD CONDITION.

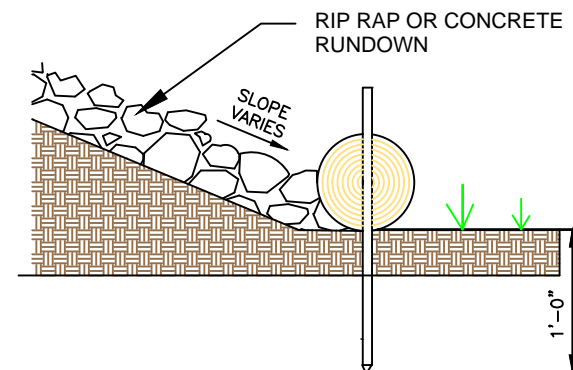


ROCK CHECK DAM

PLACE CHECK DAMS AT REGULARLY SPACED INTERVALS ALONG SWALE OR DRAINAGE DITCH.

HEIGHTS SHOULD ALLOW FOR POOLS TO DEVELOP UPSTREAM OF EACH CHECK DAM.

IF MULTIPLE DAMS ARE USED, THE TOP OF THE LOWER DAM SHOULD BE THE SAME HEIGHT AS THE ELEVATION AS THE TOE OF THE UPPER DAM.



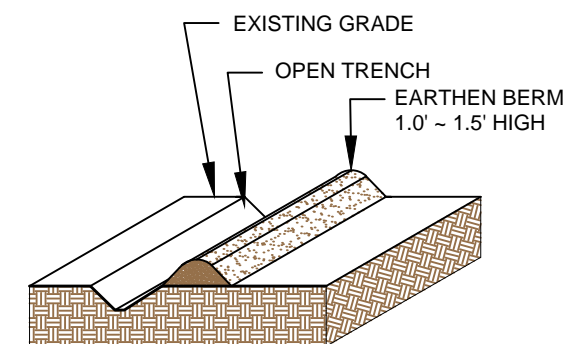
RUNDOWN DETAIL

8' MAX SPACING BETWEEN STAKES

PLACE WATTLES AT THE TOE OF SLOPE. THE RIP RAP OR CONCRETE RUNDOWN SHOULD ABUT THE WATTLE.

ANCHOR THE WATTLES WITH WOODEN STAKES. DRIVE THE STAKE A MINIMUM OF 12" INTO THE MIDDLE OF THE WATTLE AND SOIL UNDERNEATH.

2-3" OF THE WOODEN STAKE SHOULD BE PRESENT ABOVE THE WATTLE.



EARTHEN BERM

CONSTRUCT AN EARTHEN BERM DOWN HILL OF THE AREA TO BE CONTROLLED.

BERM SHOULD BE A MINIMUM 12" HIGH AND 12" WIDE.

USE EQUIPMENT TO COMPACT EARTHEN BERM BY ROLLING OVER BERM TO MINIMIZE SPREAD.



DATE	REVISION ITEM	#

TANGLEWOOD CONSTRUCTION
DUTCH BROTHERS COFFEE
(NM0106)
BMP DETAILS



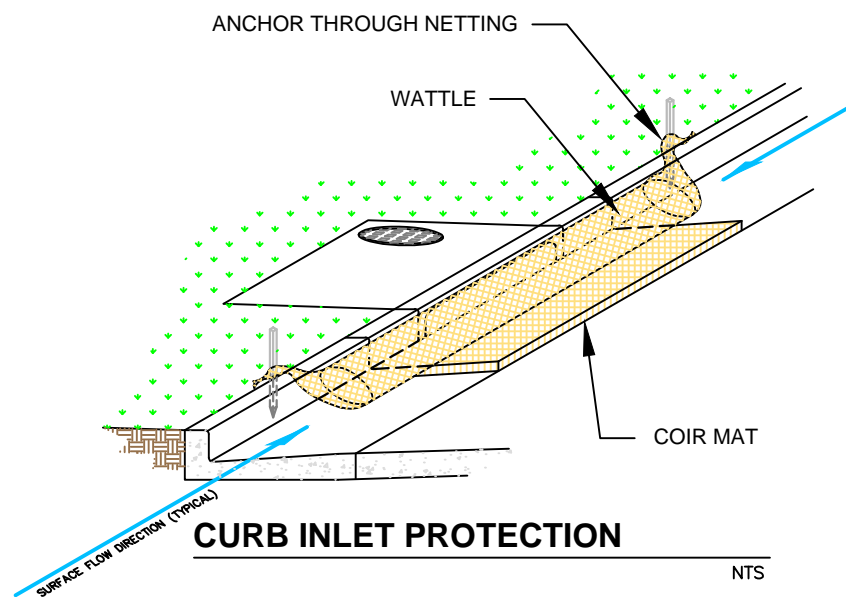
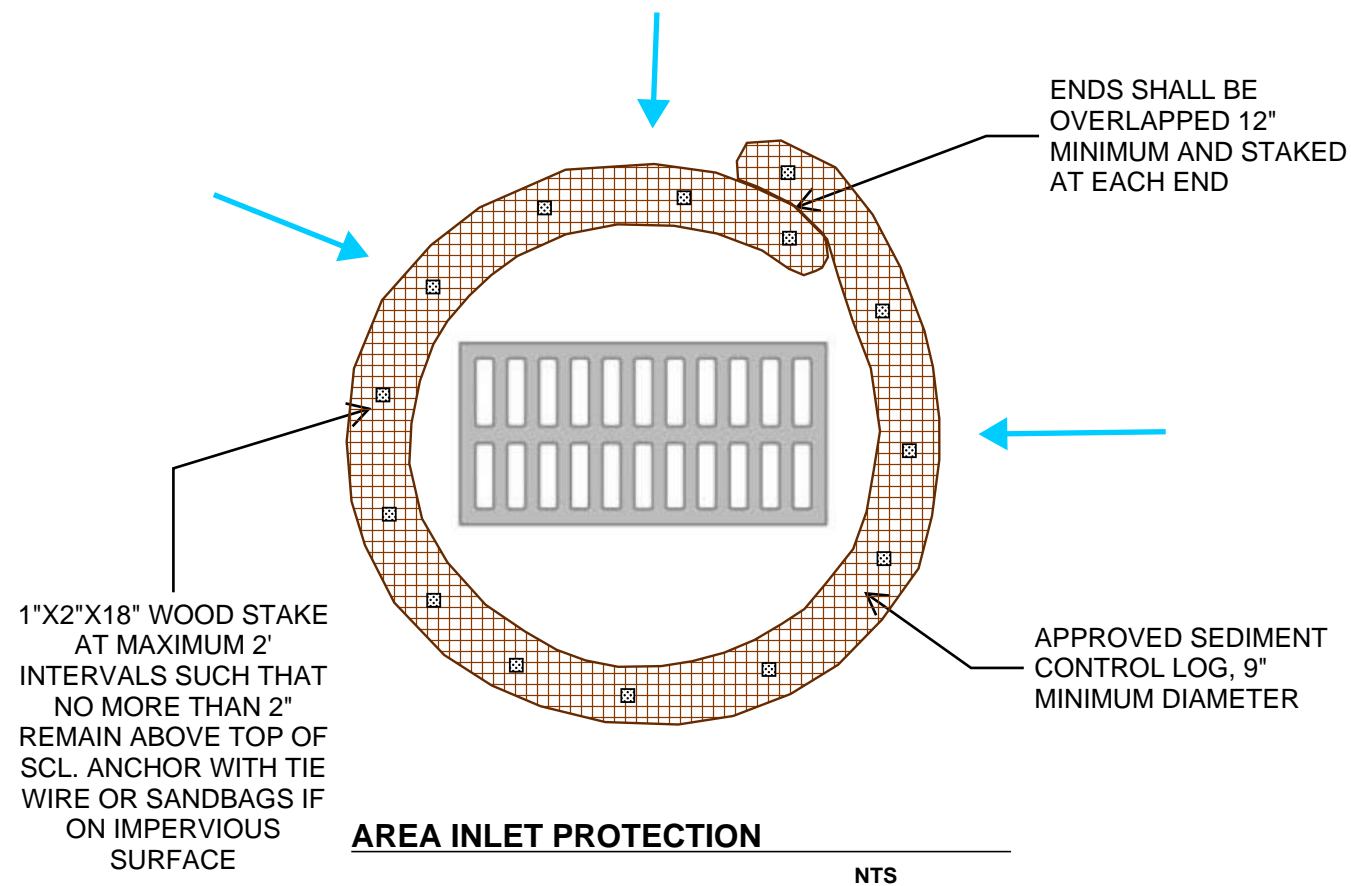
SWPPP
Stormwater
Erosion Control
Reclamation
Seeding

www.e2rc.com | 505.867.4040

DESIGNED BY:
K. FETTER, P.E.
DRAWN BY:
S. FETTER

SHEET:

5

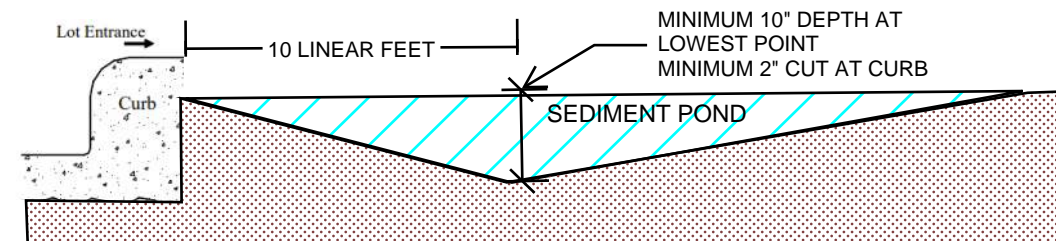


THE MAT SHOULD EXTEND A MINIMUM OF 1" PAST ALL EDGES OF THE INLET. PLACE MAT AGAINST THE CURB INLET.

PLACE WATTLES ON TOP OF THE MAT CLOSEST TO THE INLET OPENING AND CURB.

THE MAXIMUM HEIGHT OF THE PROTECTIVE BARRIER MUST BE LOWER THAN THE TOP OF THE CURB OPENING. THIS ALLOWS OVERFLOW INTO THE INLET DURING LARGE PRECIPITATION EVENTS.

ANCHOR THE BARRIER NETTING OVER THE CURB WITH WOODEN STAKES IF ABLE. IF UNABLE TO DO THAT ANCHOR THE WATTLE WITH SAND BAGS ON EACH END.



CUTBACK CURB

NTS

CUTBACK CURBS SHOULD TYPICALLY BE INSTALLED AT THE SITE ENTRANCE WHEN ACCESS IS NEEDED.

SOIL SHOULD BE CUT BACK FROM BEHIND THE CURB, SIDEWALK OR ROADWAY A MINIMUM 2" DOWN FROM THE TOP OF THE HARDSCAPE.

BRING THE SOIL BACK >10 FEET FT FROM THE HARDSCAPE TO FORM THE SEDIMENT TRAP.

THE LOWEST POINT OF THE SEDIMENT POND SHALL BE AT LEAST 10 INCHES.

IF THE HOUSE PAD HAS BEEN STABILIZED, THE DEPTH OF THE SEDIMENT POND MAY BE REDUCED TO 4 INCHES.

THE DEPTH AND LENGTH OF THE EXCAVATED AREA CAN BE INCREASED IF MORE STORAGE IS NEEDED.

INSPECT BMPs PRIOR TO FORCAST PRICIPITATION, DAILY DURING PRECIPITATION EVENTS, AFTER PRECIPITATION EVENTS AND THROUGH THE LIFE OF THE PROJECT.

MAINTAIN PROPER DEPTH AND LENGTH OF THE CUTBACK FOR THE DURATION OF THE PROJECT.

KEEP CUTBACK AREA CLEAN AND FREE OF TRASH AND DEBRIS.



DATE	REVISION ITEM	#

TANGLEWOOD CONSTRUCTION
DUTCH BROTHERS COFFEE
(NM0106)
BMP DETAILS

DESIGNED BY:
K. FETTER , P.E.
DRAWN BY:
S. FETTER

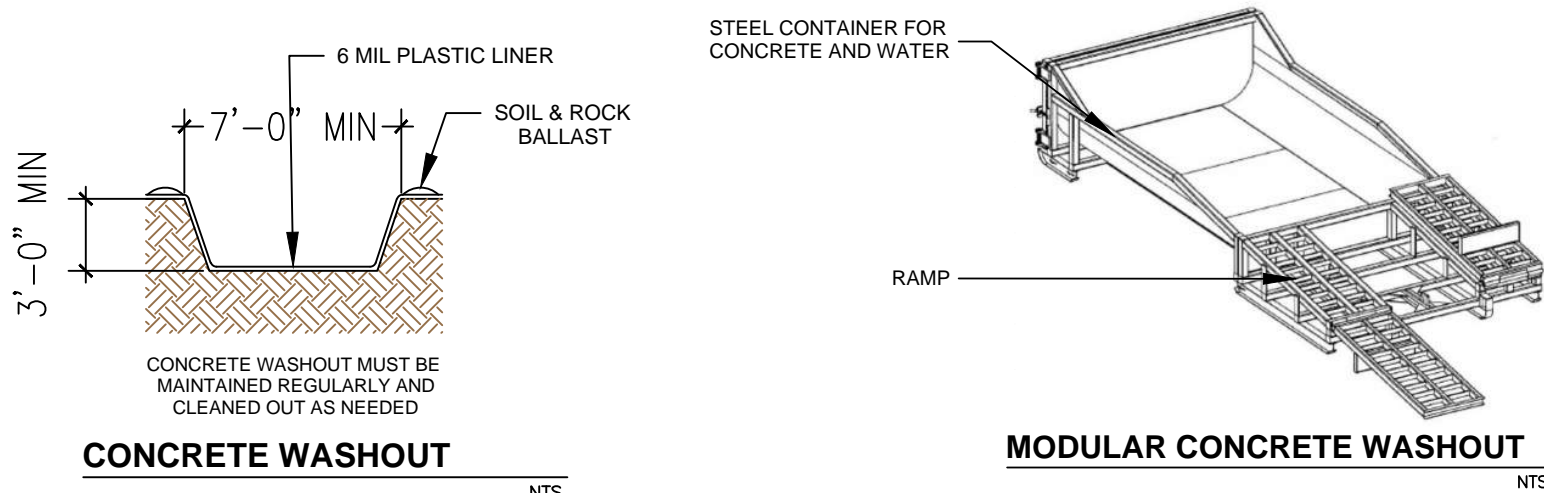
SHEET:

6



SWPPP
Stormwater
Erosion Control
Reclamation
Seeding

www.e2rc.com | 505.867.4040



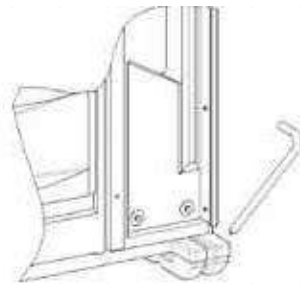
CONCRETE WASHOUT

LOCATE WASHOUT AT LEAST 50 FT FROM STORMDRAINS, OPEN DITCHES, WATER BODIES OR PROJECT PERIMETER. A SIGN SHOULD BE INSTALLED ADJACENTLY TO THE WASHOUT.

WASH OUT WASTE INTO THE WASHOUT WHERE THE CONCRETE CAN SET, BE BROKEN UP AND DISPOSED OF CORRECTLY.

DO NOT CREATE RUNOFF BY DRAINING WATER TO BERMED AREA OR BY COLLECTING THE WATER WASTE WHEN WASHING CONCRETE TO REMOVE PARTICLES AND EXPOSE THE AGGREGATE.

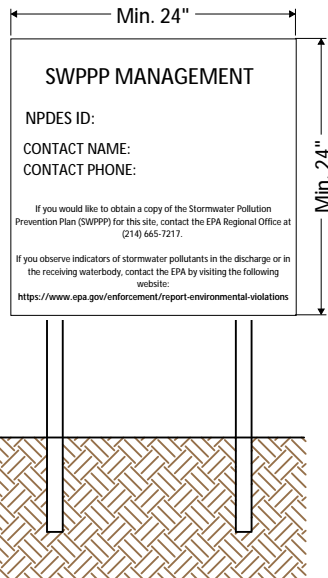
DO NOT WASH SWEEPINGS FROM EXPOSED AGGREGATE CONCRETE INTO THE STREET, STORMDRAIN SYSTEMS OR OFF THE PROJECT SITE.



PORTABLE TOILET STAKING

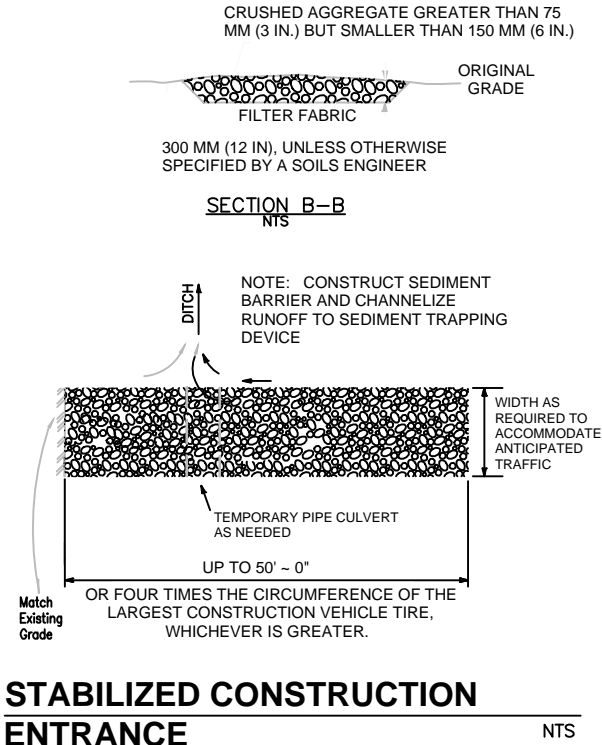
PLACE THE PORTABLE TOILET ON LEVEL GROUND. A FLAT PAVED SURFACE IS BEST IF AVAILABLE.

DRIVE THE STAKES OVER THE SKIDS OF THE PORTABLE TOILET, AROUND ALL SIDES.



NPDES Permit must be positioned at the most active part of the project where it can be viewed by the public (e.g. project entrance).

NPDES POSTING BOARD



STABILIZED CONSTRUCTION ENTRANCE

CONSTRUCT THE ENTRANCE ON A LEVEL SURFACE WHERE AN UNPAVED ROAD MEETS A PAVED ROAD. TYPICALLY AT PROJECTS ACCESS AREA.

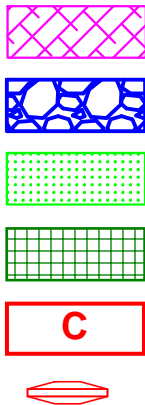
GRADE THE ENTRANCE TOWARD THE CONSTRUCTION SITE TO PREVENT RUNOFF.

INSPECT THE ENTRANCE TO KEEP TRASH AND DEBRIS OUT OF THE WAY.

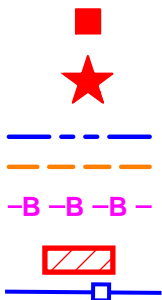
AFTER PRECIPITATION EVENTS, INSPECT THE ENTRANCE FOR ANY REPAIRS THAT MAY BE NEEDED.



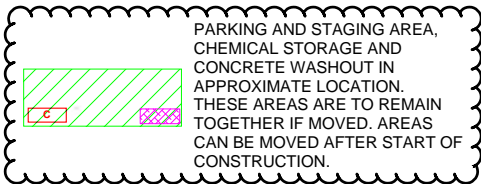
- POST - CONSTRUCTION FLOW
- PRE - CONSTRUCTION FLOW
- SILT FENCE
- WATTLE OR SOCK
- SPOILS PILE PROTECTION
- EARTHEN BERM
- INLET PROTECTION
- NATURAL BUFFER
- PARKING AND STAGING AREA



- CONCRETE WASHOUT
- STABILIZED CONSTRUCTION ENTRANCE
- VEGETATIVE STABILIZATION
- ENDANGERED/THREATENED SPECIES
- CHEMICAL STORAGE
- CHECK DAM



- TEMP TOILET
- LOCATION FOR PUBLIC NOTIFICATION OF NPDES
- PROJECT BOUNDARY
- DISTURBED AREA
- PROJECT AND DISTURBED BOUNDARY
- CULVERT BLANKET
- CUTBACK CURB



DRAWING KEY



- SWPPP
- Stormwater
- Erosion Control
- Reclamation
- Seeding

www.e2rc.com | 505.867.4040



DATE

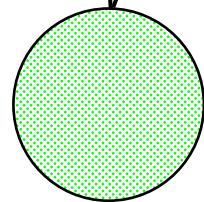
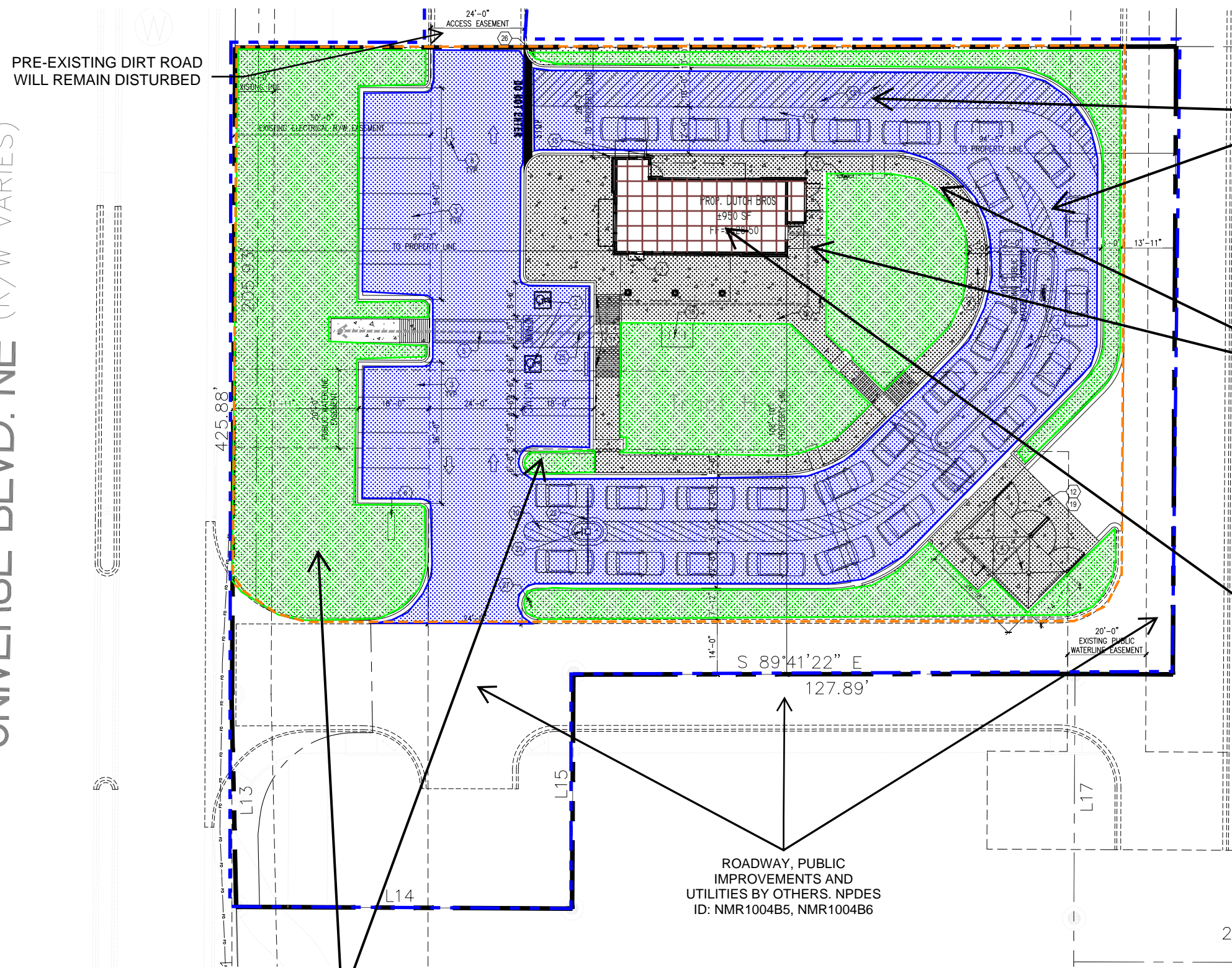
REVISION ITEM

TANGLEWOOD CONSTRUCTION
DUTCH BROTHERS COFFEE
(NM0106)
BMP DETAILS

DESIGNED BY:
K. FETTER, P.E.
DRAWN BY:
S. FETTER

SHEET:

7

UNIVERSE BLVD. NE
(R/W VARIES)

LANDSCAPING - SEE
APPROVED
LANDSCAPING PLAN FOR
DETAILS

FINAL STABILIZATION

ASPHALT PAVING

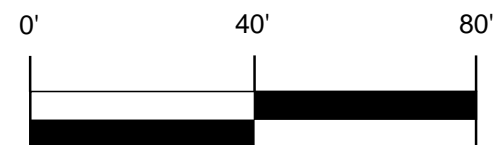
FINAL STABILIZATION

CONCRETE CURB, GUTTER,
SIDEWALK

FINAL STABILIZATION

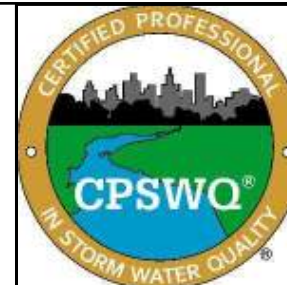
VERTICAL STRUCTURE

FINAL STABILIZATION



- SWPPP
- Stormwater
- Erosion Control
- Reclamation
- Seeding

www.e2rc.com | 505.867.4040



#	REVISION ITEM	DATE

TANGLEWOOD CONSTRUCTION
DUTCH BROTHERS COFFEE
(NM0106)
FINAL STABILIZATION

DESIGNED BY:
K. FETTER, P.E.
DRAWN BY:
S. FETTER

SHEET:

9