

APARTMENTS ON BUGLO

5530 BUGLO AVE NW ALBUQUERQUE, NM 87114

TEMPORARY EROSION AND SEDIMENT CONTROL PLAN

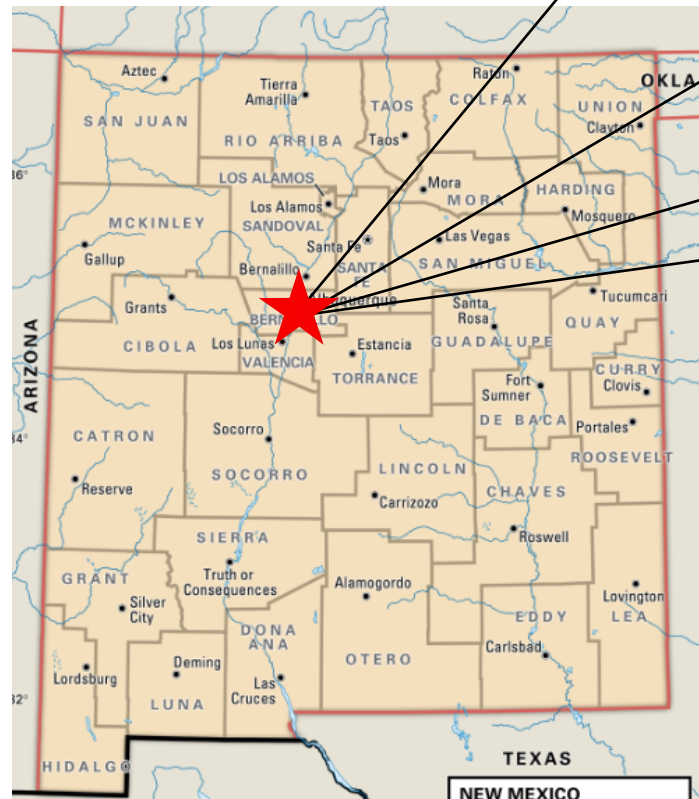
PAGE INDEX	
1	TITLE PAGE
2	SWPPP INFO AND NOTES
3	DETAILS
4	TEMPORARY EROSION CONTROL PLAN
5	STABILIZATON PLAN



SCAN OR CLICK FOR DETAILED SITE INFORMATION





VIEW ONLY DOCUMENTS AND INSPECTIONS



GPS COORDINATES: **35.1931, -106.6997**

THIS IS A PRELIMINARY DESIGN FOR EROSION AND SEDIMENT CONTROLS. NO BUILDING PLANS OR APPROVED GRADING AND DRAINAGE PLANS HAVE BEEN RECEIVED.

 05/26/2021 CPESC Stamp	APARTMENTS ON BUGLO		<small>PROJECT TITLE</small>	
	ALBUQUERQUE, NM, BERNALILLO COUNTY			<small>CITY, COUNTY, STATE</small>
	05/26/2021	<small>DATE</small>		
	C. DURKIN	<small>DRAWN BY</small>		

STORMWATER POLLUTION PREVENTION PLAN INFORMATION

PERMIT NUMBER: NMR1003YA	
NMR100000 STATE OF NEW MEXICO, EXCEPT INDIAN COUNTRY NMR10I000 INDIAN COUNTRY WITHIN THE STATE OF NEW MEXICO, EXCEPT NAVAJO RESERVATION LANDS THAT ARE COVERED UNDER ARIZONA PERMIT AZR10I000 AND UTE MOUNTAIN RESERVATION LANDS THAT ARE COVERED UNDER COLORADO PERMIT COR10I000.	
OPERATOR NAME: STAR TRUST OF NEW MEXICO	
OPERATOR POINT OF CONTACT: SHARIF RABADI	
NOI PREPARED BY: INSPECTIONS PLUS	
PROJECT/SITE NAME: APARTMENTS ON BUGLO	
PROJECT/SITE ADDRESS: 5530 BUGLO AVE NW ALBUQUERQUE, NM 87114	
LATITUDE	35.1931
LONGITUDE	-106.6997
ESTIMATED PROJECT START DATE	05/19/2021
ESTIMATED PROJECT COMPLETION DATE	07/31/2022
ESTIMATED AREA TO BE DISTURBED	1.5 ACRES
TYPE OF CONSTRUCTION	RESIDENTIAL
DEMOLITION OF ANY STRUCTURES, 10,000 SQ FT OF GREATER BUILT OR RENOVATED BEFORE JANUARY 1, 1980?	NO
WAS THE PREDEVELOPMENT LAND USED FOR AGRICULTURE?	NO
COMMENCED EARTH DISTURBING ACTIVITIES?	YES
DISCHARGE TO MS4? MS4 NAME?	NO- FREE DISCHARGE
SURFACE WATERS WITHIN 50FT?	NO
RECEIVING WATER?	PIEDRAS MARCADAS CANYON
IS RECEIVING WATER IMPAIRED? TIER DESIGNATION	NO
WHAT ARE THE IMPAIRMENTS, IF ANY?	N/A
SWPPP CONTACT INFORMATION: MOHAMMAD TAHAT 575-650-0380	
ENDANGERED SPECIES CRITERIA: CRITERION "A"; NO CRITICAL HABITATS WITHIN PROJECT AREA	
HISTORIC PRESERVATION CRITERIA: CRITERION "A"; NO SUBSURFACE CONTROLS	

EROSION CONTROL NOTES ESC Plan Standard Notes (2021-03-24)

1. All Erosion and Sediment Control (ESC) work on these plans, except as otherwise stated or provided hereon shall be permitted, constructed, inspected, and maintained in accordance with:

- a. The City Ordinance § 14-5-2-11, the ESC Ordinance,
- b. The EPA's 2017 Construction General Permit (CGP), and
- c. The City Of Albuquerque Construction BMP Manual.



2. All BMP's must be installed prior to beginning any earth moving activities except as specified hereon in the Phasing Plan. Construction of earthen BMP's such as sediment traps, sediment basins, and diversion berms shall be completed and inspected prior to any other construction or earthwork. Self-inspection is required after installation of the BMPs and prior to beginning construction.

3. Self-inspections - At a minimum a routine compliance self-inspection is required to review the project for compliance with the Construction General Permit once every 14 days and after any precipitation event of 1/4 inch or greater until the site construction has been completed and the site determined as stabilized by the city. Reports of these inspections shall be kept by the person or entity authorized to direct the construction activities on the site and made available upon request.

4. Corrective action reports must be kept by the person or entity authorized to direct the construction activities on the site and made available upon request.

5. Stabilization reports must be kept by the person or entity authorized to direct the construction activities on the site and made available upon request. Reports should include records of weed removal per City Ordinance (§ 9-8-1), sterilization, soil test results and recommendation, materials and manufacturer's specifications for application rates, estimated functional longevity, methods of application, inspection and maintenance. The reduced self-inspection schedule in CGP 4.4.1 applies to stabilized area and any damaged or worn stabilization must be identified in the reports along with weed problems. Corrective actions for stabilization shall be documented in a stabilization report including actual rates and dates of stabilization, and the materials and manufacturer's specifications used.

6. BMPs shall be inspected and maintained until all disturbed areas are stabilized in accordance with the Final Stabilization Criteria (CGP 2.2.14.b). Generally, all disturbed areas, other than structures and impervious surfaces, must have uniform perennial vegetation that provides 70 percent or more of the cover provided by native vegetation or seed the disturbed area and provide non-vegetative mulch that provides cover for at least three years without active maintenance. Final stabilization must be approved by the City of Albuquerque prior to removal of BMPs and discontinuation of inspections.

 05/26/2021 CPESC Stamp	APARTMENTS ON BUGLO	
	PROJECT TITLE	
	ALBUQUERQUE, NM, BERNALILLO COUNTY	
	CITY, COUNTY, STATE	
05/26/2021	DATE	 INSPECTIONS PLUS
C. DURKIN	DRAWN BY	

SEDIMENT TRACK OUT CONTROL



BMP Objectives

- Sediment Control

SILT FENCE



BMP Objectives

- Sediment Control
- Sheet Flow Runoff Control
- Wind Erosion Control

INLET PROTECTION



BMP Objectives

- Sediment Control
- Sheet Flow Runoff Control
- Wind Erosion Control

BERMS AND SWALES



BMP Objectives

- Runoff Control
- Run-on Diversion

MULCH SOCK/STRAW WATTLE



BMP Objectives

- Sediment Control
- Reduce Runoff Velocity
- Inlet Protection

LEGEND

TEMPORARY EROSION AND SEDIMENT CONTROL PLAN

PP-PP-PP- PROJECT PERIMETER

-BW-BW- EXISTING BLOCK WALL

Ⓢ POSTING SIGN

⊗ OUTFALL

▨ STAGING AREA

← FLOW DIRECTION

-SF-SF-SF-SF- SILT FENCE

♻️ DEBRIS CONTAINMENT

● CHEMICAL TOILET

▨ CONCRETE WASHOUT

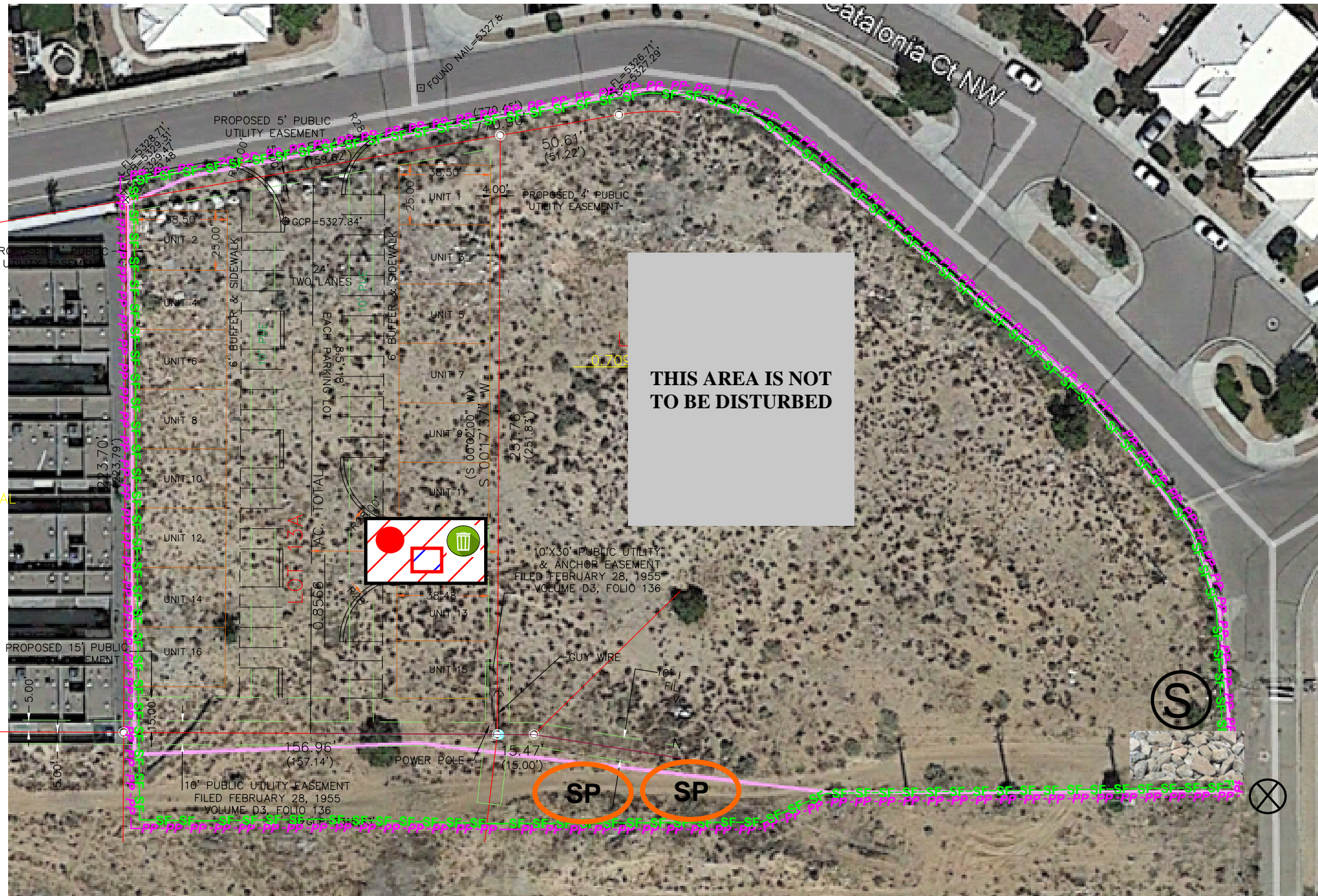
▨ STABILIZED CONSTRUCTION ENTRANCE

○ TEMPORARY SEDIMENT POND

○ SP STOCK PILE

<p>05/26/2021 CPESC Stamp</p>	<p>APARTMENTS ON BUGLO PROJECT TITLE</p>	
	<p>ALBUQUERQUE, NM, BERNALILLO COUNTY CITY, COUNTY, STATE</p>	
	<p>05/26/2021 DATE</p>	<p>C. DURKIN DRAWN BY</p>

THIS IS A PRELIMINARY DESIGN FOR EROSION AND SEDIMENT CONTROLS. NO BUILDING PLANS OR APPROVED GRADING AND DRAINAGE PLANS HAVE BEEN RECEIVED.



SCHEDULE/SEQUENCING OF CONSTRUCTION

1. POST PERMITS
2. INSTALL REQUIRED BMPs
 - 2.a. PERIMETER CONTROLS
3. BUILDING CONSTRUCTION
4. MATERIAL DISPOSAL OFFSITE
5. LANDSCAPE
6. PUNCH LIST

SITE OPERATORS:

SHARIF RABADI TRUSTEE STAR TRUST 505-440-6443
PRESTIGE CUSTOM DESIGNS MOHAMMAD TAHAT 575-650-0380

STORMWATER TEAM

- A: REMOVE SEDIMENT FROM ADJACENT STREETS: PRESTIGE CUSTOM DESIGNS
- B: BMP MAINTENANCE: PRESTIGE CUSTOM DESIGNS
- C: SITE INSPECTIONS: PRESTIGE CUSTOM DESIGNS



05/26/2021
CPESC Stamp

APARTMENTS ON BUGLO

PROJECT TITLE

ALBUQUERQUE, NM, BERNALILLO COUNTY

CITY, COUNTY, STATE

05/26/2021

DATE





C. DURKIN

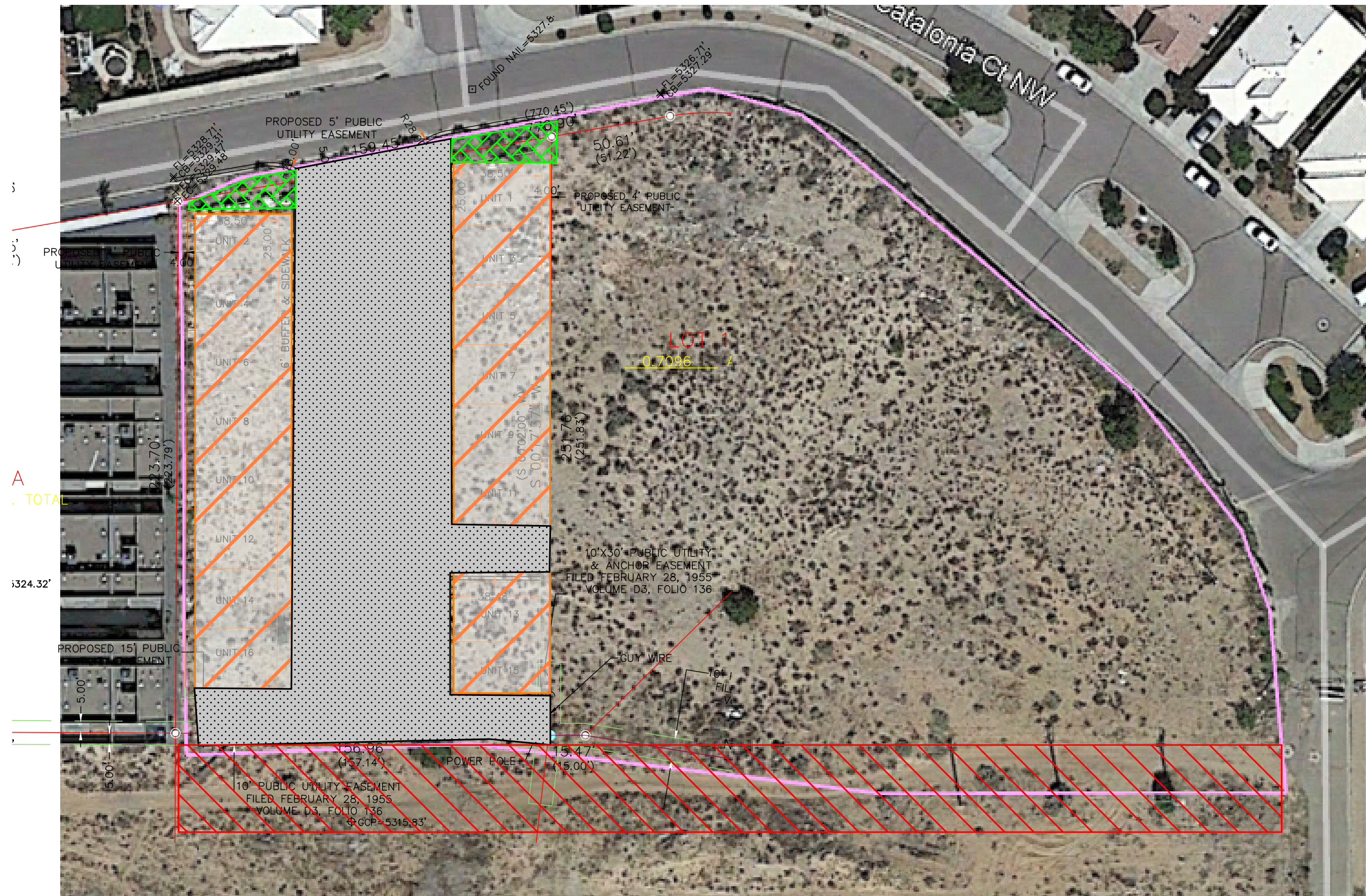
DRAWN BY



STABILIZATION PLAN

LEGEND

-  PAVING
-  STRUCTURE
-  LANDSCAPING
-  HYDROMULCH



THIS IS A PRELIMINARY DESIGN FOR PERMANENT STABILIZATION. NO BUILDING PLANS OR APPROVED GRADING AND DRAINAGE PLANS HAVE BEEN RECEIVED.



05/26/2021
CPESC Stamp

APARTMENTS ON BUGLO

PROJECT TITLE

ALBUQUERQUE, NM, BERNALILLO COUNTY

CITY, COUNTY, STATE

05/26/2021

DATE

C. DURKIN

DRAWN BY

