



# ***City of Albuquerque***

P.O. BOX 1293 ALBUQUERQUE, NEW MEXICO 87103

**June 5, 1995**

**James D. Hughes, PE  
Community Sciences Corp  
P.O. Box 1328  
Corrales, NM 87048**

**RE: ENGINEER'S CERTIFICATION FOR PARADISE GREENS, PHASE 1 (RECEIVED)  
RECEIVED MAY 10, 1995 FOR FINANCIAL GUARANTY RELEASE  
ENGINEER'S STAMP DATED 4/19/95**

**Dear Mr. Hughes:**

**Based on the information included in the submittal referenced above, City Hydrology accepts the Engineer's Certification of grading & drainage for Financial Guaranty Release. Contact the DRC Chairman, Billy Goolsby, for the actual Financial Guaranty Release for City Project Number 4905.90.**

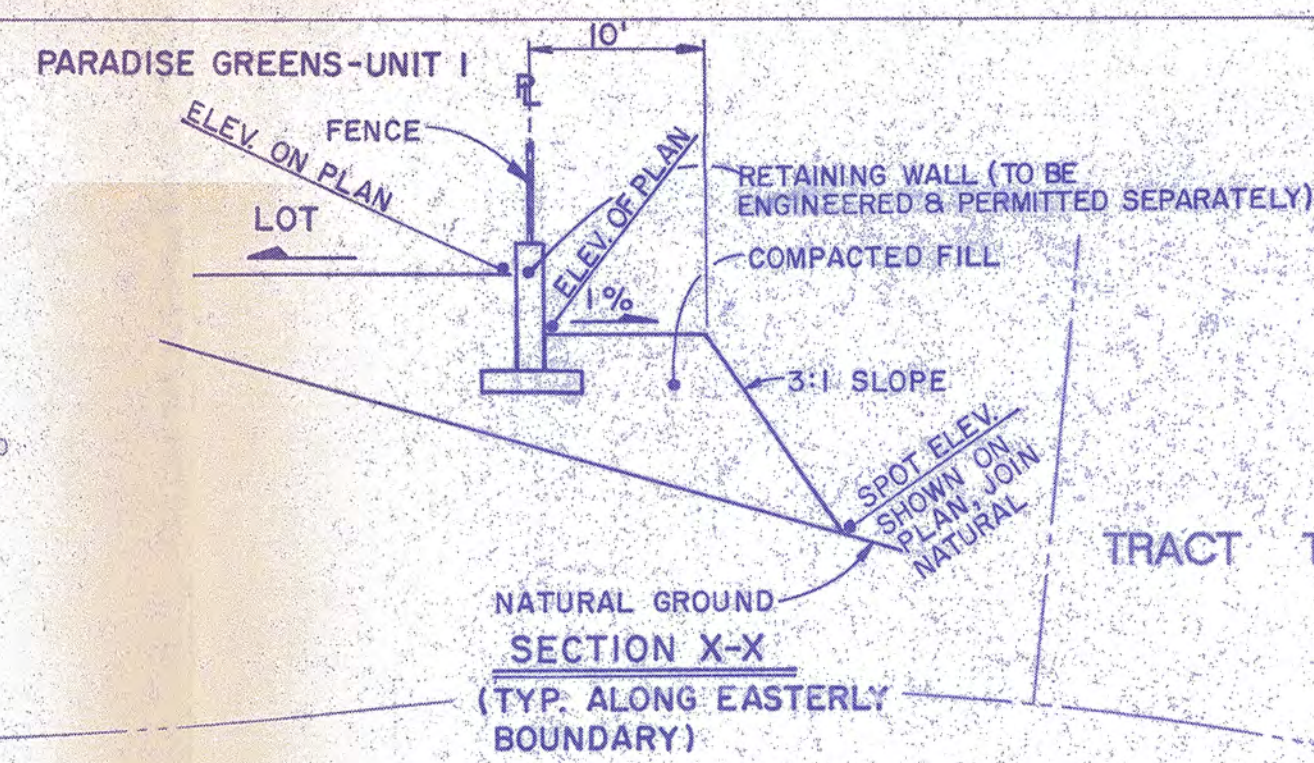
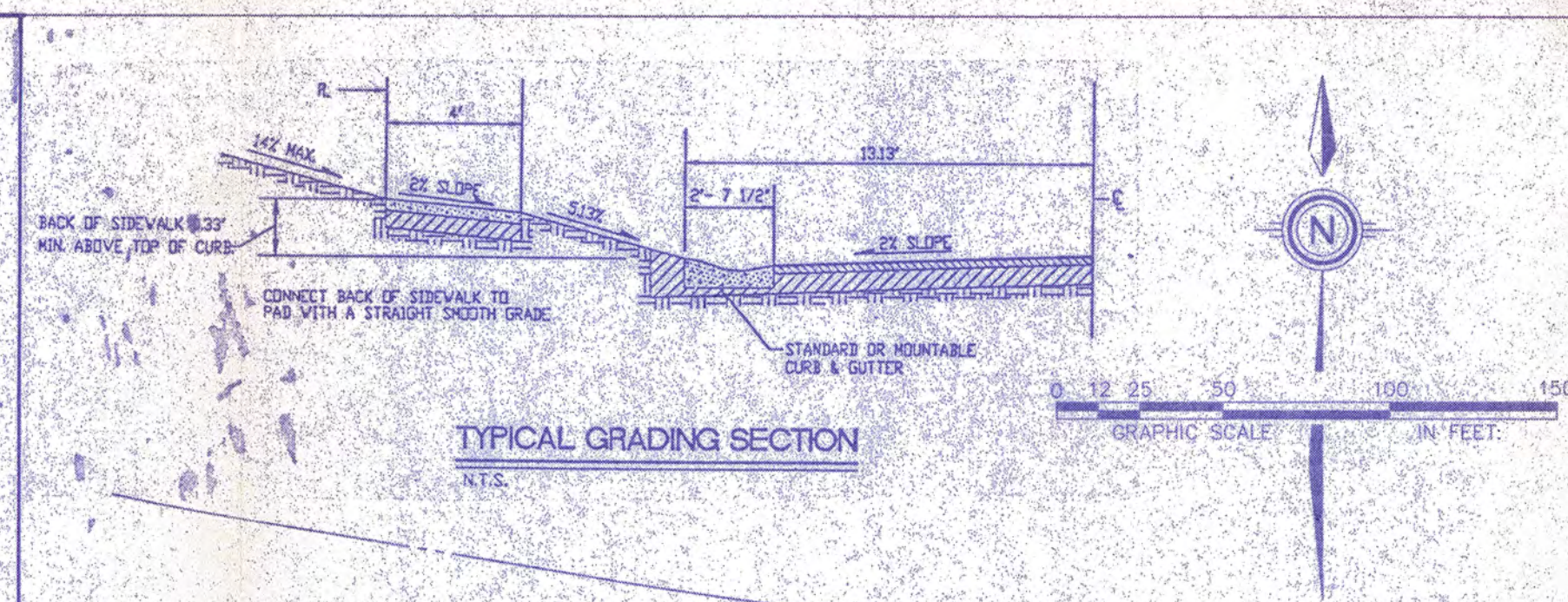
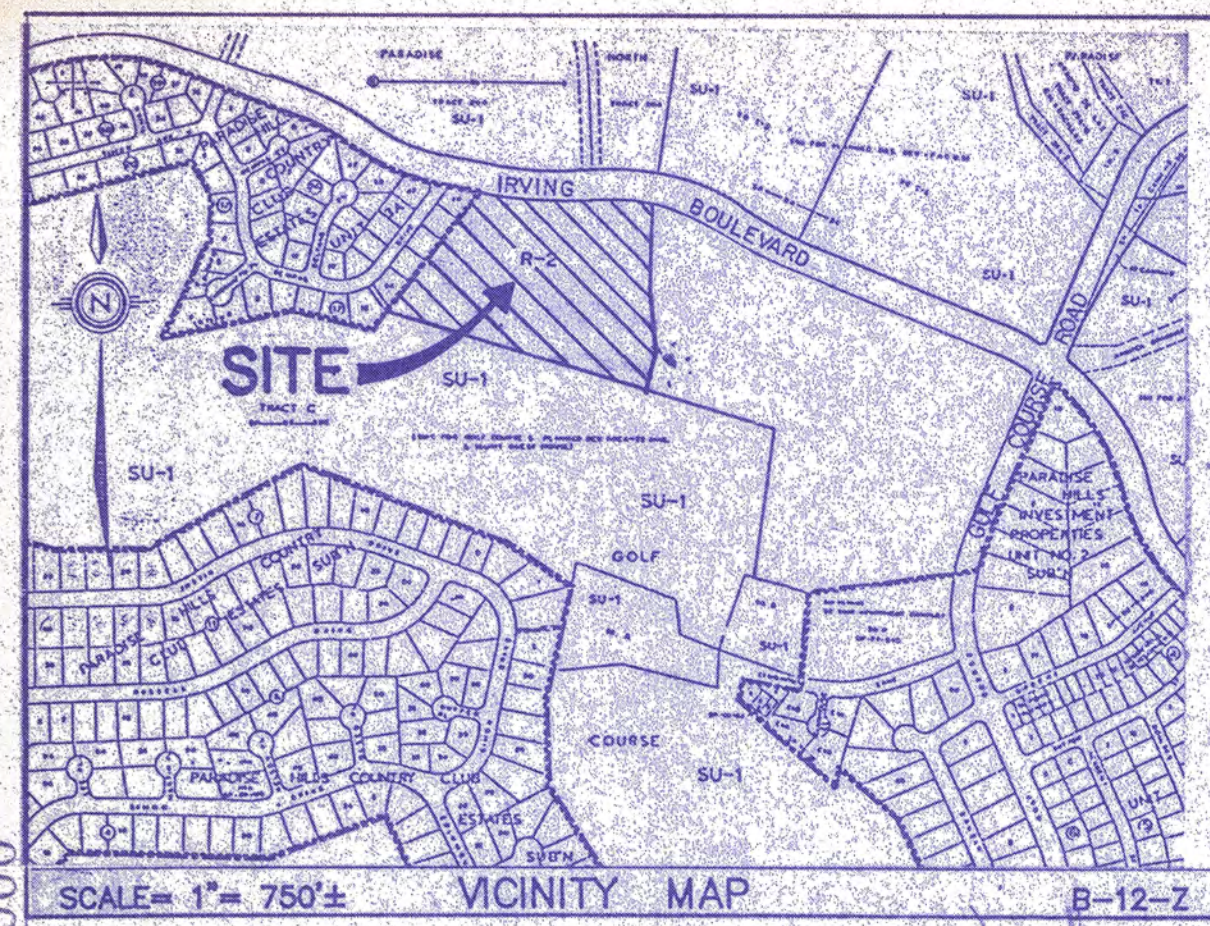
**If I can be of further assistance, You may contact me at 768-2727.**

**Sincerely,**

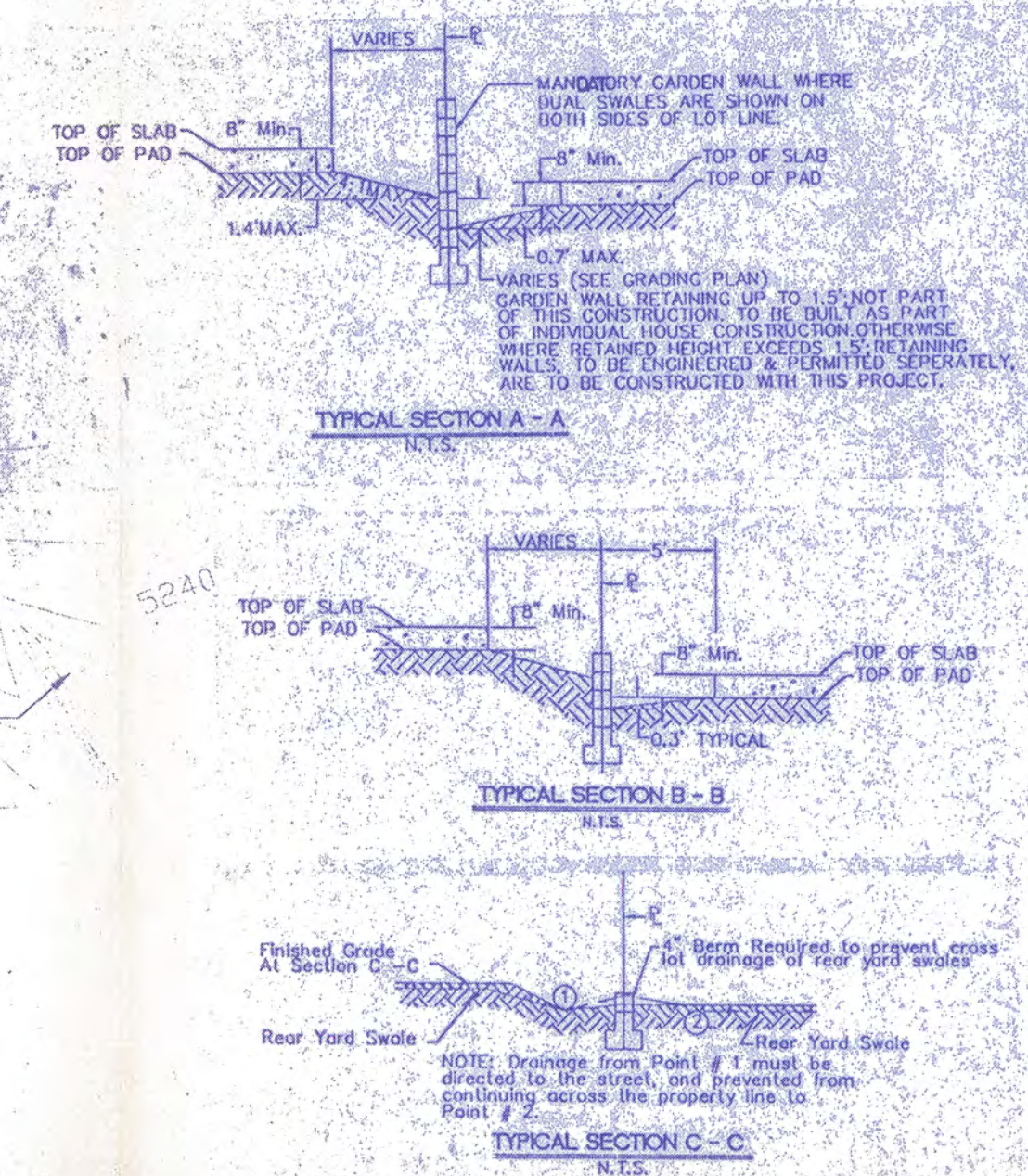
**John P. Curtin, P.E.  
Civil Engineer/Hydrology**

**c: Andrew Garcia  
Billy Goolsby, 4905.90  
Ben Spencer, Argus Dev Co, 6501 Americas Pkwy 87110**





**PARADISE GREENS- UNIT 1**  
COMPRISED OF  
TRACT LETTERED 'A' OF LANDS OF HORIZON CORPORATION  
SITUATE WITHIN  
TOWN OF ALAMEDA GRANT  
SECTION 12, T11N, R2E, N.M.P.M.  
CITY OF ALBUQUERQUE, BERNALILLO COUNTY, NEW MEXICO  
MARCH, 1994  
DRB-93-362



### TYPICAL LOT GRADING DETAILS

**EARTHWORK SUMMARY**

CUT	= 12,500 CY
FILL	= 76,500 CY
IMPORTED FILL	= 64,000 CY

### LEGEND

- TC=98.43 PROPOSED TOP OF CURB ELEVATION
- 99.0 PROPOSED SPOT ELEVATION
- 09.0 EXISTING SPOT ELEVATION (GRND & TC)
- EROSION CONTROL BERM
- PROPOSED CONCRETE VALLEY GUTTER
- EXISTING CURB & GUTTER
- PROPOSED MOUNTABLE CURB & GUTTER
- PROPOSED STANDARD CURB & GUTTER
- EXISTING CONTOUR W/ INDEX ELEVATION
- UNIT BOUNDARY
- 2-TYPE DOUBLE "A" DROP INLETS
- TYPE "A" DROP INLET
- STORM DRAIN MANHOLE
- SWALE
- FLOW ARROW
- PROPOSED RETAINING WALL
- EXISTING W/O ELECTRICAL
- EXISTING WATER LINE
- EXISTING U/G TELEPHONE
- EXISTING STORM DRAIN
- PROPOSED STORM DRAIN
- WATER BLOCK
- EXISTING GAS LINE



APPROVED FOR ROUGH GRADING  
(± 1 FT.)

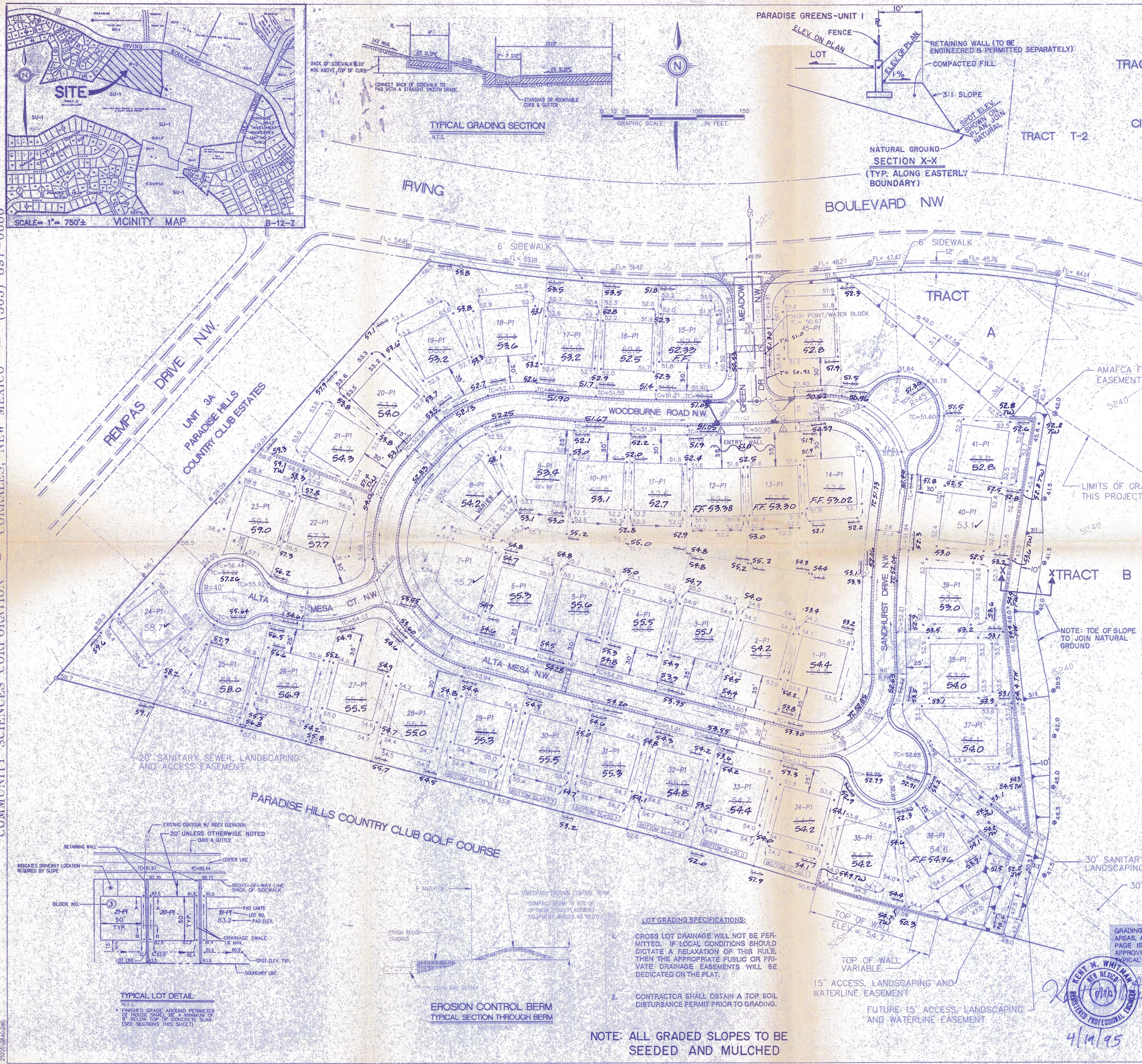
CITY HYDROLOGY

DATE

CITY OF ALBUQUERQUE  
PUBLIC WORKS DEPARTMENT  
ENGINEERING GROUP

TITLE: PARADISE GREENS - UNIT 1  
GRADING & EROSION CONTROL PLAN

APPROVALS	ENGINEER	DATE	APPROVALS	ENGINEER	DATE
DRG CHAIRMAN	W.A. RAB	7-13-94	WATER	W.A. RAB	7/13/94
TRANSPORTATION	W.A. RAB	5-18-94	WASTE WATER	W.A. RAB	5/18/94
HYDROLOGY	W.A. RAB	5-18-94	AMAFCA	W.A. RAB	5/18/94
PROJECT NO.	4905.90	MAP NO.	B-12	SHEET	2 OF 2



FOR CONSTRUCTION