

# CITY OF ALBUQUERQUE



May 26, 2006

Mr. Mark Goodwin, P.E.  
**MARK GOODWIN & ASSOCIATES**  
P.O. Box 90606  
Albuquerque, NM 87199

**Re: AMESTOY DRYWALL OFFICE ADDITION**  
**4461 Irving Blvd. NW**  
**Approval of Permanent Certificate of Occupancy (C.O.)**  
**Approved Engineer's Stamp dated 06/20/2005 (B-13/D1A)**  
**Certification dated 05/22/2006**

Dear Mark:

Based upon the information provided in your submittal received 05/23/2006, the above referenced certification is approved for release of Permanent Certificate of Occupancy by Hydrology.

If you have any questions, you can contact me at 924-3982.

Sincerely,

Arlene V. Portillo  
Plan Checker, Planning Dept. - Hydrology  
Development and Building Services

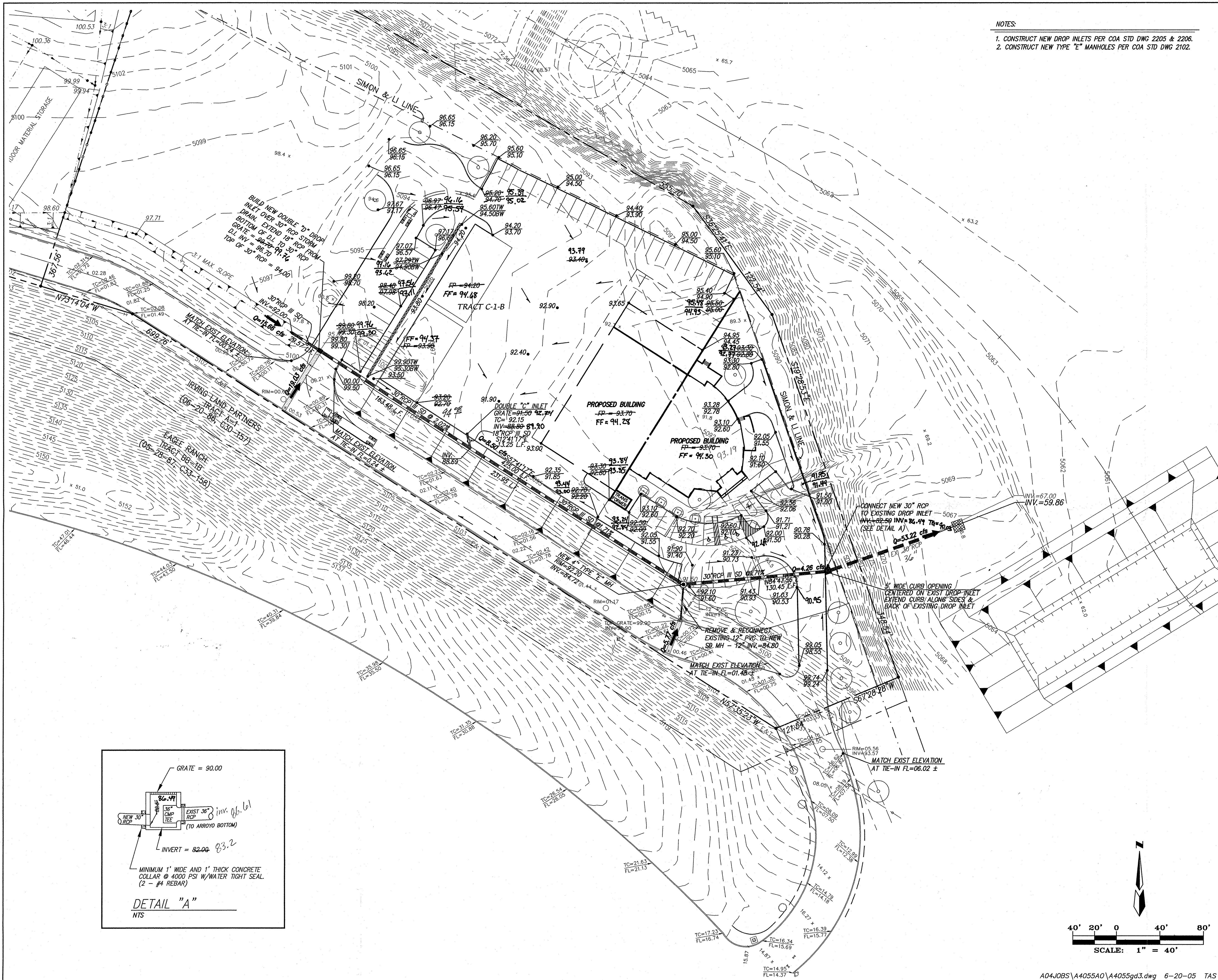
C: CO Clerk  
File

P.O. Box 1293

Albuquerque

New Mexico 87103

[www.cabq.gov](http://www.cabq.gov)



- NOTES:
1. CONSTRUCT NEW DROP INLETS PER COA STD DWG 2205 & 2206.
  2. CONSTRUCT NEW TYPE "E" MANHOLES PER COA STD DWG 2102.

#### HYDROLOGY NOTES

THESE BUILDINGS ARE NOT IN THE 100-YEAR FLOOD PLAIN PER FIRM MAP #35001C01080. THE 100-YEAR FLOOD IS CONTAINED IN THE CALABACILLAS ARROYO ALONG THIS SITE.

TRACT C-1-A IS BEING DEVELOPED NOW. TRACT C-1-B WILL BE DEVELOPED IN THE NEAR FUTURE. THE PROPOSED RIP-RAP PAD AND DROP STRUCTURE WILL BE DONE PRIOR TO THE FINAL DEVELOPMENT OF TRACT C-1-A.

FOR THE DEVELOPMENT OF TRACT C-1-A, A TEMPORARY DRAINAGE SWALE (WITH A CROSS-LOT DRAINAGE EASEMENT) WILL TAKE THE FLOW (25.16 cfs) ACROSS TRACT C-1-B. THIS WILL COMBINE WITH FLOW FROM BASIN "B" (24.77 cfs) AND GO INTO AN INLET ON TRACT C-1-B. FROM THE INLET THE FLOW WILL GO INTO A 36" RCP STORM PIPE AND THEN INTO A 48" RCP PIPE WITH A RING CHAMBER. THE FLOW WILL THEN DISCHARGE INTO THE ARROYO. PLEASE SEE THE OUTFALL DETAIL. THIS PIPE IS SIZED FOR DEVELOPED FLOW FROM BASINS "A" & "B", 49.93 cfs. WHEN TRACT C-1-B IS DEVELOPED, IT WILL BE DESIGNED TO ACCEPT FREE DISCHARGE FROM TRACT C-1-A.

#### LEGEND

- 5070 — EXISTING CONTOUR (MAJOR)
- 5069 --- EXISTING CONTOUR (MINOR)
- TC= — EXISTING TOP CURB ELEVATION
- FL= — EXISTING FLOWLINE ELEVATION
- x 00.00 EXISTING SPOT ELEVATION
- EXISTING CONCRETE CURB
- EXISTING CONCRETE/SIDEWALK
- EXISTING WALL OR HEAD WALL
- EXISTING TREE
- EXISTING LIGHT POLE
- EXISTING SIMON & LI LINE
- 91.50 • PROPOSED SPOT ELEVATION
- 90.25 TG PROPOSED TOP OF GRATE ELEVATION
- INV=87.00 PROPOSED INVERT ELEVATION
- PROPOSED STORM DRAIN INLET
- PROPOSED STORM DRAIN PIPE
- PROPOSED SWALE
- PROPOSED SLOPE SYMBOL
- PROPOSED DRAINAGE BASIN LINE
- PROPOSED WATER BLOCK
- PROPOSED RETAINING WALL

#### DRAINAGE CERTIFICATION

I, Mark Goodwin, NMPE 8948, of the firm Mark Goodwin & Associates, P.A., hereby certify that this project has been graded and will drain in substantial compliance with and in accordance with the design intent of the approved plan dated 6/20/05. The record information edited onto the original design document has been obtained by Preston E. Hall of the firm Hall Surveying Co., I further certify that I have personally visited the project site on 5/02/06, and have determined by visual inspection that the survey data provided is representative of actual site conditions and is true and correct to the best of my knowledge and belief. This certification is submitted in support of a request for Grading Certification approval.

The record information presented herein is not necessarily complete and intended only to verify substantial compliance of the grading and drainage aspects of this project. Those relying on the record document are advised to obtain independent verification of its accuracy before using it for any other purpose.

Mark Goodwin  
MARK GOODWIN

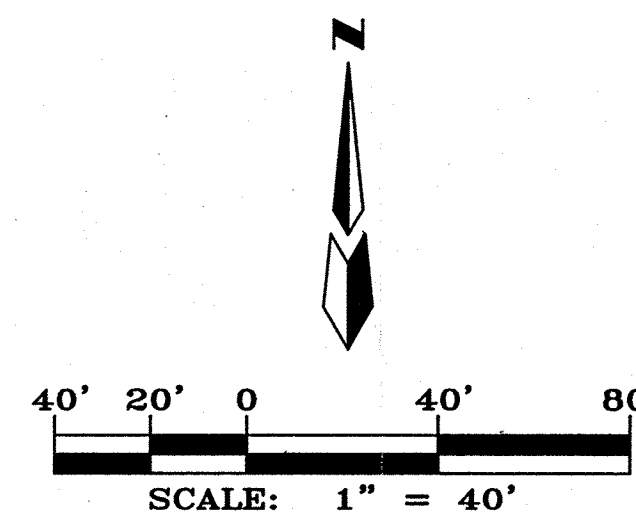


John M. MacFarlane  
6-20-05

#### AMESTOY DRYWALL OFFICE GRADING AND DRAINAGE PLAN

dmg MARK GOODWIN & ASSOCIATES, P.A.  
CONSULTING ENGINEERS  
P.O. BOX 90606  
ALBUQUERQUE, NEW MEXICO 87199  
(505)828-2200, FAX (505)797-9539

Designed: DMG Drawn: DER Checked: DMG Sheet 1 of 1  
Scale: 1" = 50' Date: 08-17-04 Job: A04055



A04JOBS\A4055A0\A4055g3.dwg 6-20-05 TAS