

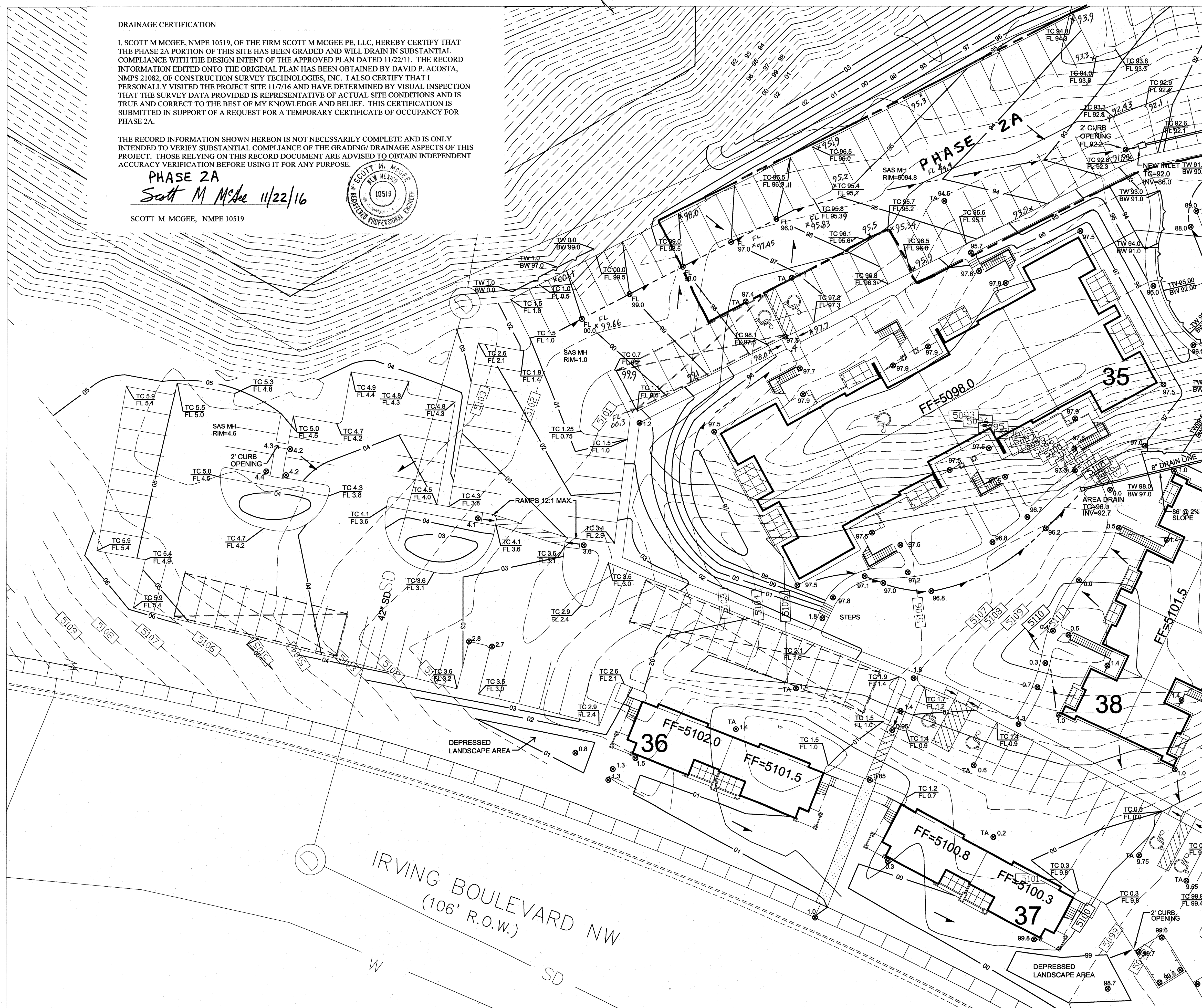
**DRAINAGE CERTIFICATION**

I, SCOTT M MCGEE, NMPE 10519, OF THE FIRM SCOTT M MCGEE PE, LLC, HEREBY CERTIFY THAT THE PHASE 2A PORTION OF THIS SITE HAS BEEN GRADED AND WILL DRAIN IN SUBSTANTIAL COMPLIANCE WITH THE DESIGN INTENT OF THE APPROVED PLAN DATED 11/22/11. THE RECORD INFORMATION EDITED ONTO THE ORIGINAL PLAN HAS BEEN OBTAINED BY DAVID P. ACOSTA, NMPS 21082, OF CONSTRUCTION SURVEY TECHNOLOGIES, INC. I ALSO CERTIFY THAT I PERSONALLY VISITED THE PROJECT SITE 11/7/16 AND HAVE DETERMINED BY VISUAL INSPECTION THAT THE SURVEY DATA PROVIDED IS REPRESENTATIVE OF ACTUAL SITE CONDITIONS AND IS TRUE AND CORRECT TO THE BEST OF MY KNOWLEDGE AND BELIEF. THIS CERTIFICATION IS SUBMITTED IN SUPPORT OF A REQUEST FOR A TEMPORARY CERTIFICATE OF OCCUPANCY FOR PHASE 2A.

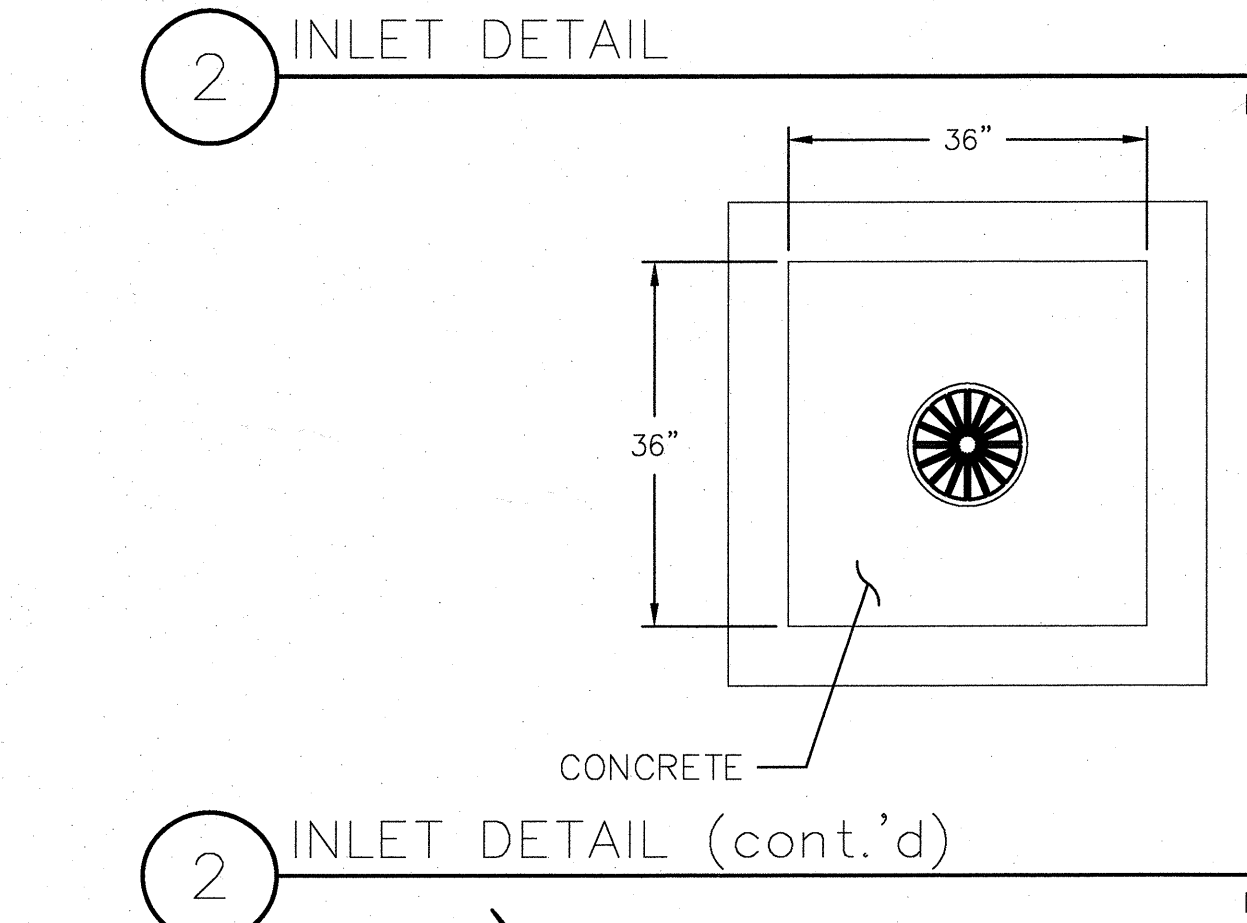
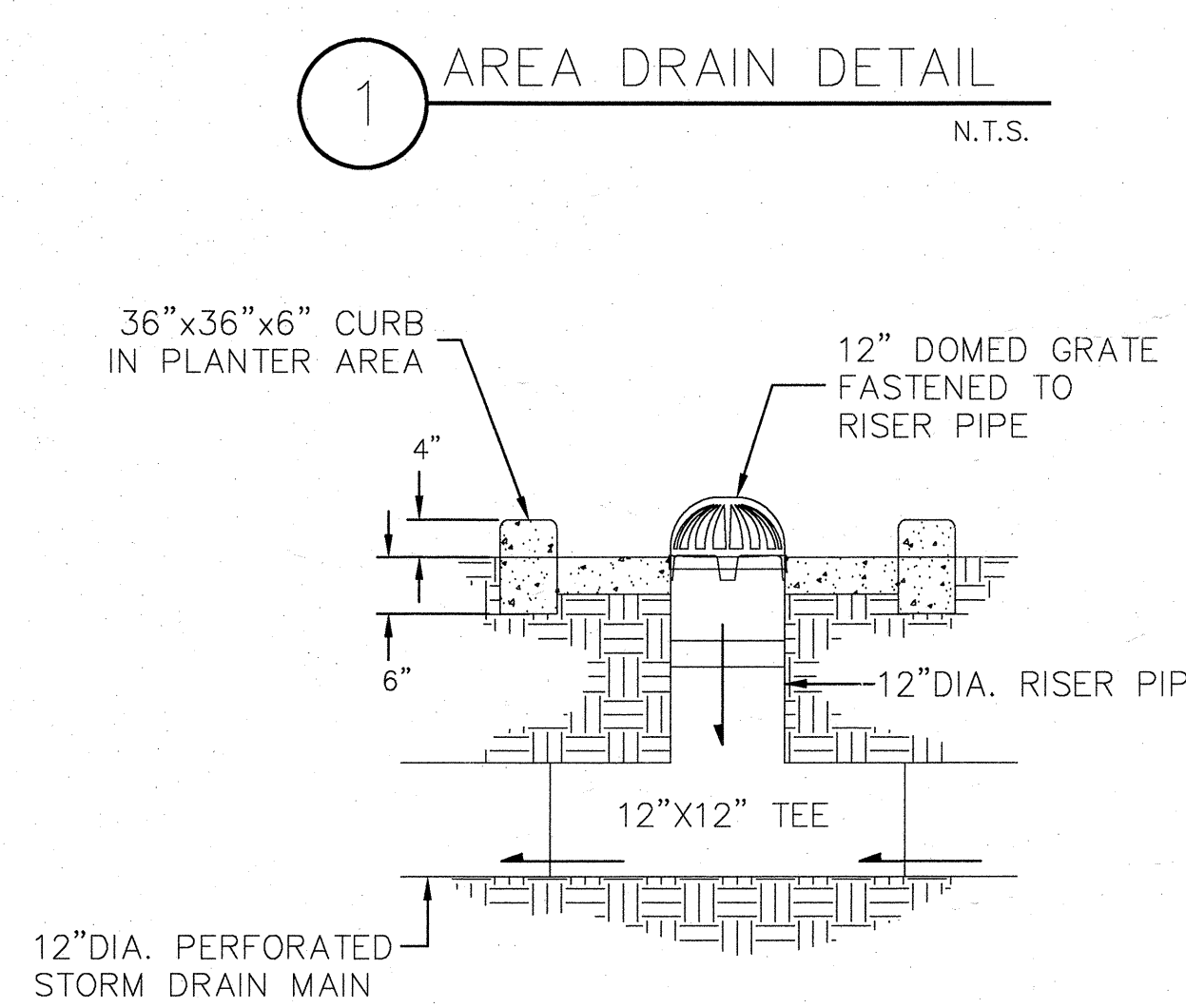
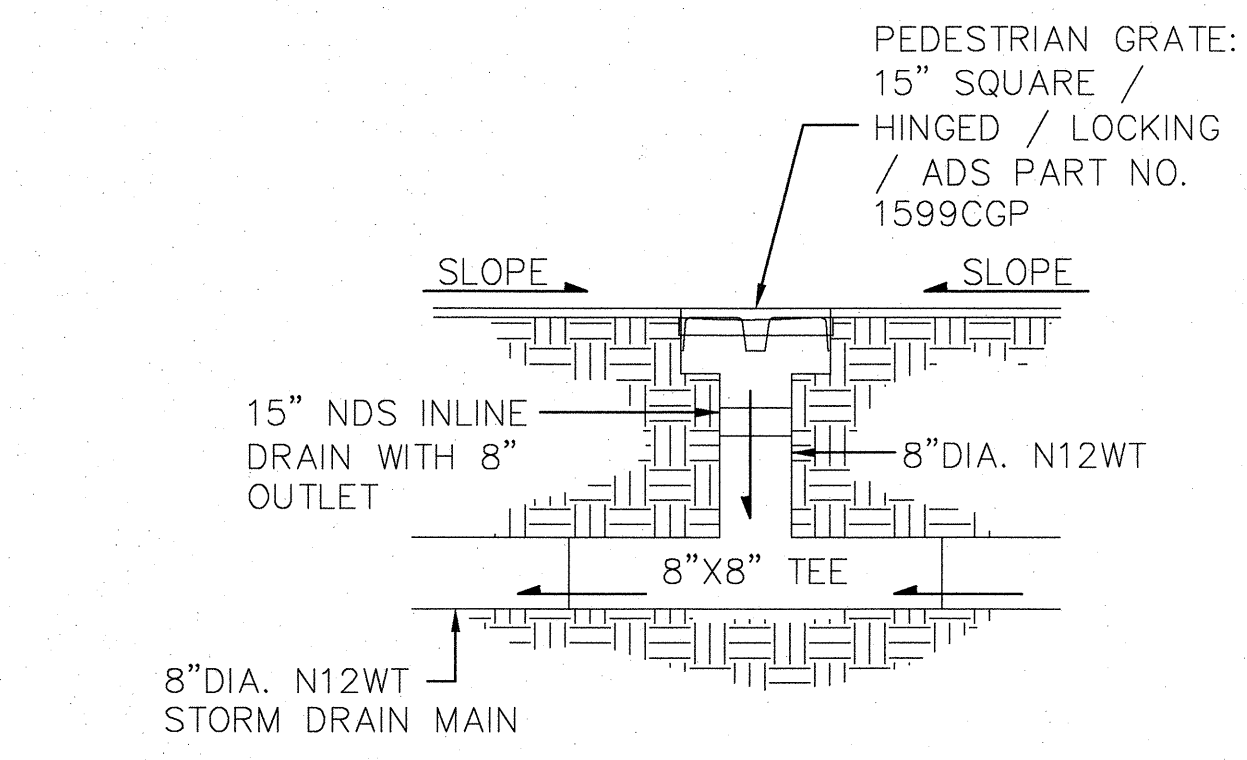
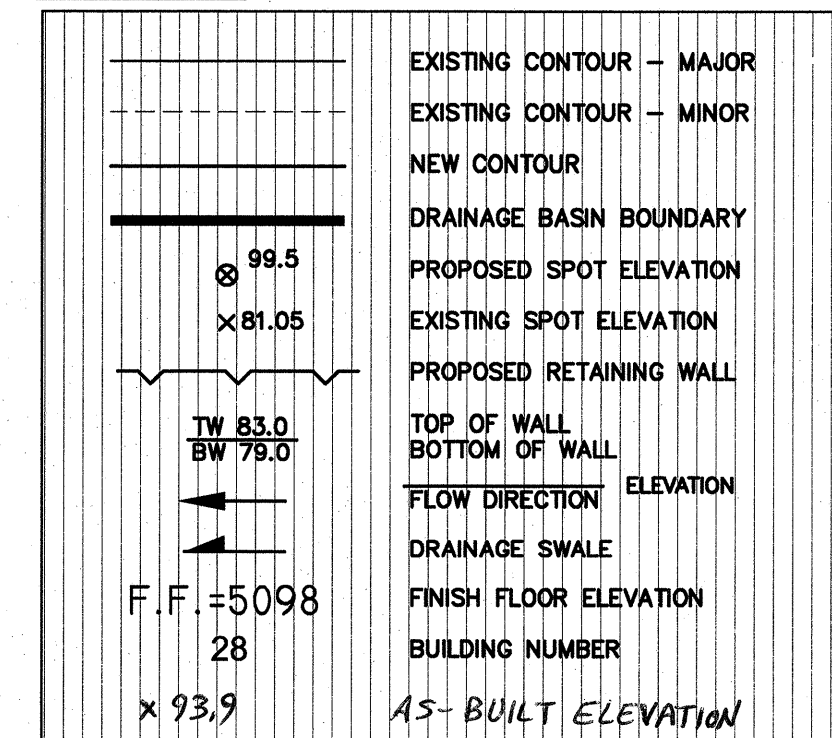
THE RECORD INFORMATION SHOWN HEREON IS NOT NECESSARILY COMPLETE AND IS ONLY INTENDED TO VERIFY SUBSTANTIAL COMPLIANCE OF THE GRADING/DRAINAGE ASPECTS OF THIS PROJECT. THOSE RELYING ON THIS RECORD DOCUMENT ARE ADVISED TO OBTAIN INDEPENDENT ACCURACY VERIFICATION BEFORE USING IT FOR ANY PURPOSE.

**PHASE 2A**  
*Scott M McGee 11/22/16*

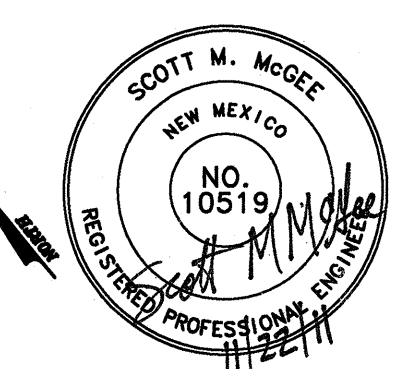
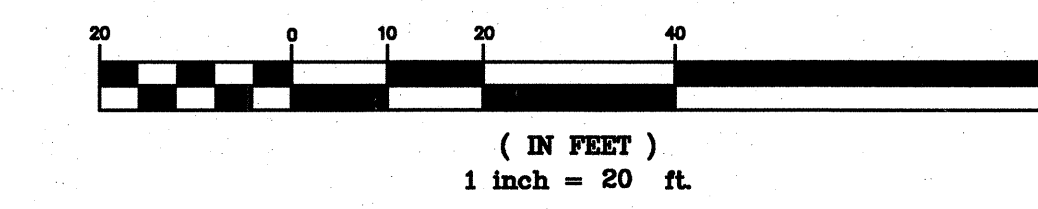
SCOTT M MCGEE, NMPE 10519



**Legend**



**GRAPHIC SCALE**



PHASE 2  
 ASPEN RANCH APTS  
 9677 EAGLE RANCH RD NW  
 ALBUQUERQUE, NEW MEXICO

**Grading and  
 Drainage Plan**

DATE	10/10/2011
REVISED DATE	
SHEET	C1.1