



City of Albuquerque

P.O. BOX 1293 ALBUQUERQUE, NEW MEXICO 87103

January 18, 1996

Mark Goodwin, P.E.
Mark Goodwin & Assoc.
P. O. Box 90606
Albuquerque, NM 87199

RE: ENGINEER'S CERTIFICATION FOR TRAILS WEST SUBDIVISION (B-13/D6C)
RECEIVED JANUARY 9, 1996 FOR FINANCIAL GUARANTY RELEASE
ENGINEER'S STAMP DATED 1/8/96

Dear Mr. Goodwin:

Based on the information included in the submittal referenced above, City Hydrology accepts the Engineer's Certification of grading & drainage. Contact Terri Martin to obtain the Financial Guaranty Release for City Project number 5209.90.

If I can be of further assistance, You may contact me at 768-2727.

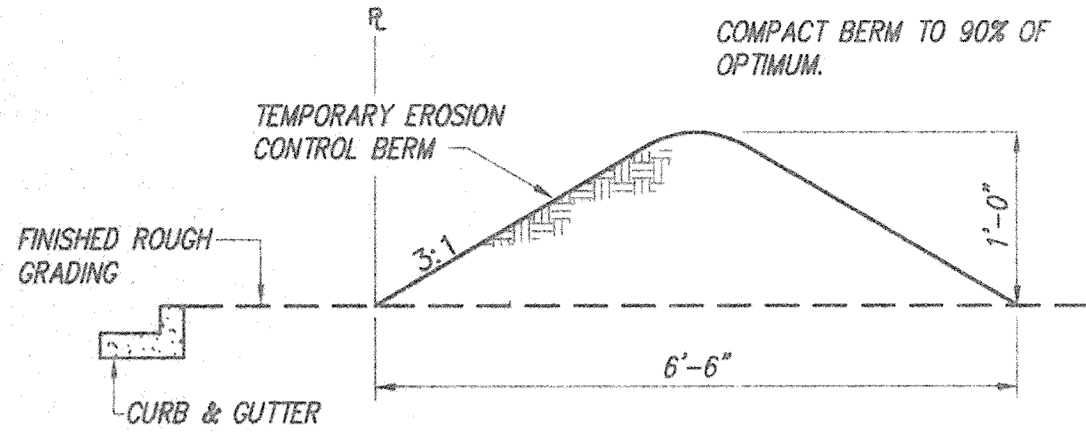
Sincerely,

John P. Curtin, P.E.
Civil Engineer/Hydrology

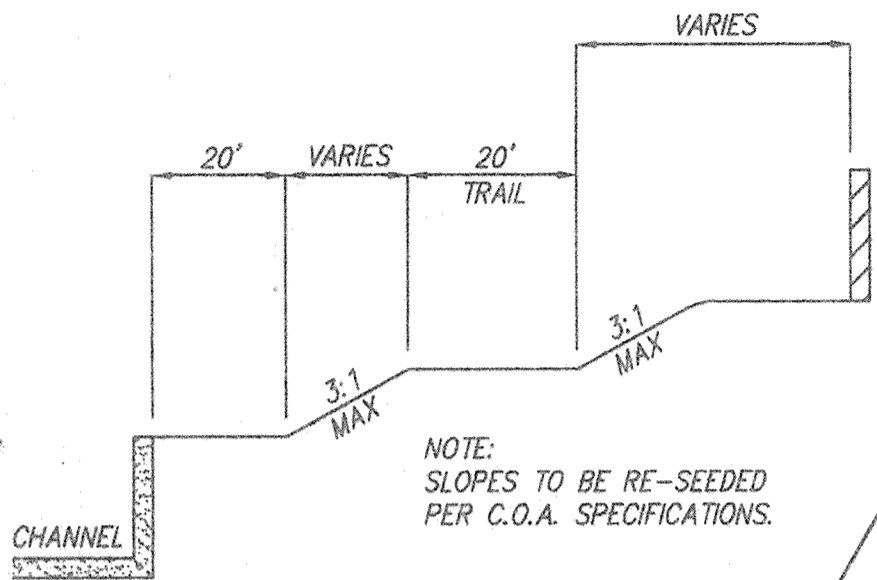
c: Andrew Garcia
Terri Martin, CPN 5209.90
Rick Davis, Family Housing Dev Corp, 1114 Pennsylvania NE 87110

EROSION CONTROL NOTES

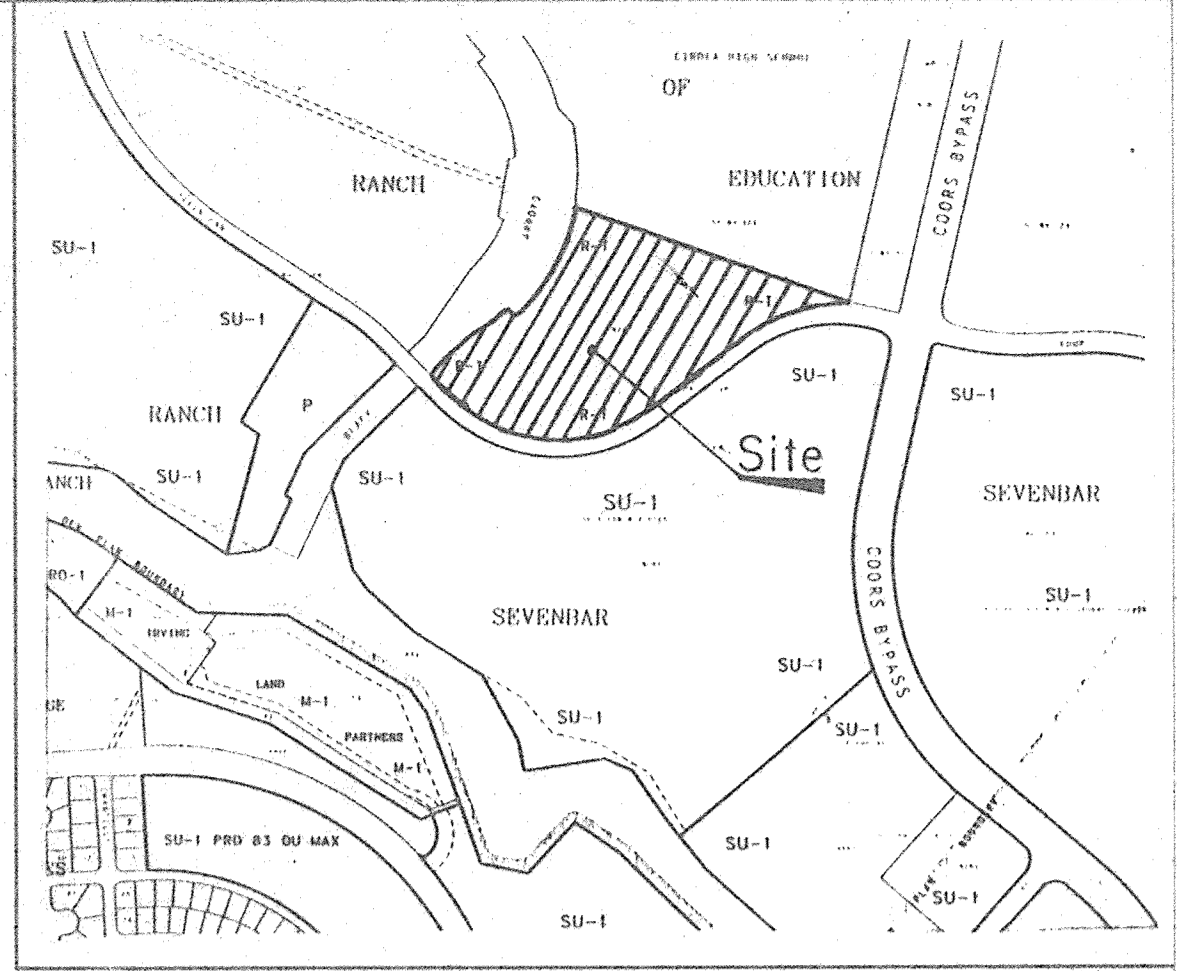
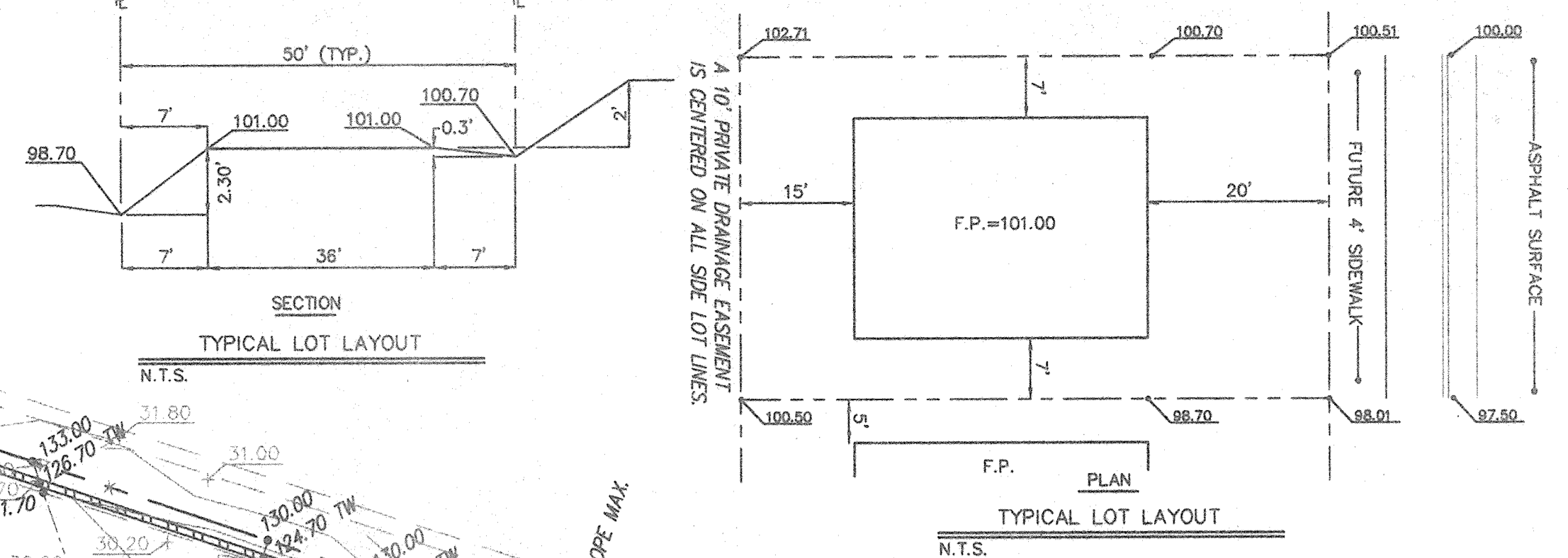
1. CONTRACTOR IS RESPONSIBLE FOR OBTAINING A TOPSOIL DISTURBANCE PERMIT PRIOR TO BEGINNING WORK.
2. CONTRACTOR IS RESPONSIBLE FOR KEEPING ALL SEDIMENT OUT OF EXISTING RIGHT-OF-WAY.
3. CONTRACTOR IS RESPONSIBLE FOR CLEANING UP ANY SEDIMENT THAT GETS INTO EXISTING RIGHT-OF-WAY.
4. EROSION CONTROL BERMS ARE REQUIRED AROUND THE ENTIRE SITE.
5. ALL EROSION CONTROL BERMS MUST BE IN PLACE AND ENGINEER CERTIFIED PRIOR TO BUILDING PERMIT RELEASE.



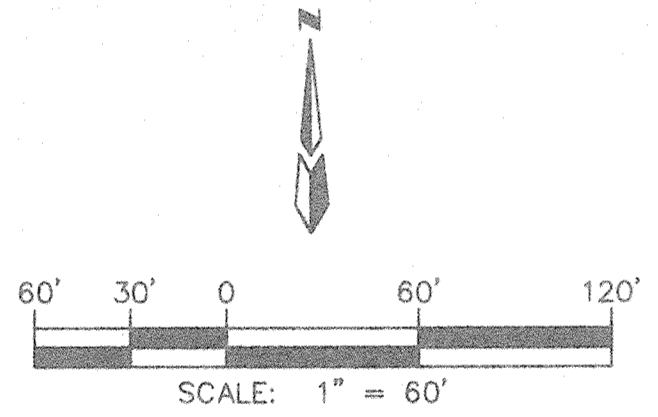
EROSION CONTROL BERM DETAIL
N.T.S.



TYPICAL TRAIL DETAIL
N.T.S.



VICINITY MAP
ZONE MAP: B-13-Z
LEGAL DESCRIPTION
TRACT N-2A-2, SEVEN BAR RANCH



LEGEND:

FF	Finished Floor
=====	NEW STANDARD CURB & GUTTER
=====	NEW MOUNTABLE CURB & GUTTER
=====	NEW RETAINING WALL (DESIGN BY OTHERS)
51.70	AS-BUILT NEW SPOT ELEVATION
→	FLOW DIRECTION ARROW
55.85	EXISTING SPOT ELEVATION
---	EXISTING CURB & GUTTER
---	EXISTING CONTOUR

- GENERAL NOTES**
1. CONTRACTOR MUST OBTAIN A TOPSOIL DISTURBANCE PERMIT FROM THE ENVIRONMENTAL HEALTH DIVISION PRIOR TO CONSTRUCTION.
 2. CITY OF ALBUQUERQUE STANDARD SPECIFICATIONS FOR PUBLIC WORKS CONSTRUCTION, LATEST EDITION SHALL GOVERN ALL WORK.
 3. THE CONTRACTOR SHALL CONFORM TO ALL CITY, COUNTY, STATE, AND FEDERAL DUST CONTROL MEASURES AND REQUIREMENTS AND WILL BE RESPONSIBLE FOR PREPARING AND OBTAINING ALL NECESSARY APPLICATIONS AND APPROVALS.
 4. THE CONTRACTOR SHALL ENSURE THAT NO SOIL ERODES FROM THE LOTS INTO PUBLIC RIGHT-OF-WAY. THIS CAN BE ACHIEVED BY CONSTRUCTING TEMPORARY BERMS AS PER DETAIL THIS SHEET AND WETTING THE SOIL TO KEEP IT FROM BLOWING.
 5. THE EARTHWORK CONTRACTOR SHALL STOCKPILE ENOUGH MATERIALS ADJACENT TO RETAINING WALL LOCATIONS TO BE UTILIZED FOR WALL BACKFILL.
 6. SITE DOES NOT LIE WITHIN A 100 YEAR FLOOD ZONE.

- STORM DRAIN KEY**
- 1 TYPE "A" INLET EACH SIDE WITH 18" LATERAL.
 - 2 TYPE "DOUBLE C" INLET EACH SIDE WITH 18" LATERAL.
 - 3 TYPE "SINGLE C" INLET EACH SIDE WITH 18" LATERAL.
 - 4 CONNECT "DOUBLE C" INLET (EXIST.) SOUTH SIDE ADD NEW "DOUBLE C" INLET NORTH SIDE WITH 24" LATERAL.
 - 5 TYPE "A" INLET EACH SIDE WITH 18" LATERAL.
 - 6 TYPE "DOUBLE C" INLET EACH SIDE WITH 18" LATERAL.
 - 7 TYPE "A" INLET WITH 18" LATERAL.
 - 8 TYPE "A" INLET EACH SIDE WITH 18" LATERAL.

I hereby certify that the information contained on this drawing has been revised in accordance with information furnished by the Contractor, Sundance Mechanical, and by the Surveyor, ALS, Inc., and reflects the construction as actually accomplished. This plan as constructed is in substantial compliance with the Approved Plan.

Mark Goodwin, NMPE 8948
12/14/95
1/3/96

At the time of the certification surveys, all 93 homes were under construction preventing pad surveys. Visual inspection indicated that all lots will drain per the approved grading plan.

dmg
D. MARK GOODWIN & ASSOCIATES, P.A.
CONSULTING ENGINEERS & SURVEYORS
P.O. BOX 90606
ALBUQUERQUE, NEW MEXICO 87199
(505) 345-2010

CITY OF ALBUQUERQUE
PUBLIC WORKS DEPARTMENT
ENGINEERING GROUP

TITLE:
TRAILS WEST SUBDIVISION
GRADING AND DRAINAGE PLAN

APPROVALS	ENGINEER	DATE	APPROVALS	ENGINEER	DATE
DRC CHAIRMAN	B. G. ...	6-12-95	WATER	N/A RWE	5-16-95
TRANSPORTATION	...	5-16-95	WASTE WATER	N/A RWE	5-16-95
HYDROLOGY	...	5-19-95	PARKS & G.S.D.	...	6-22-95
PROJECT	...	5-16-95			

NO. 5209.90
B13
SHEET 4 OF 20

AS BUILT INFORMATION		BENCH MARKS		STATION MARK IS A STANDARD MISC. BRASS TABLET, STAMPED	
CONTRACTOR	ALS, INC.	DATE	95	STATION MARK IS A STANDARD MISC. BRASS TABLET, STAMPED	"MMHAB-N12" SET IN TOP OF A CONCRETE TABLET, 0.3 FT. ABOVE GROUND. LOCATED AT A MOUNTAIN BELL TELE. CO. SUB-STATION NEAR THE INTERSECTION OF COORS RD. N.W. AND CORRALES RD.
WORK	ALS, INC.	DATE	95	RECORDED BY	DMG
DESIGNED BY	DMG	DATE	4/95	DESIGNED BY	DMG
DRAWN BY	DC	DATE	4/95	DRAWN BY	DC
CHECKED BY	DMG	DATE	4/95	CHECKED BY	DMG