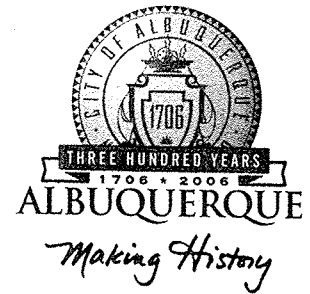


# CITY OF ALBUQUERQUE



June 28, 2005

Dave Aube, P.E.  
Telck-Hensley Engineering Group  
2340 Menaul Blvd. NE – Suite 200  
Albuquerque, NM 87107

**Re: Southwest Medical Office Building, 4420 Irving Blvd. NW  
Traffic Circulation Layout - Engineer's Stamp dated 6-23-05 (B13-D22)**

Dear Mr. Aube,

The TCL submittal received 6-23-05 is approved for Building Permit. The plan is stamped and signed as approved. A copy of this plan shall be inserted into each set of the building permit plans. Please keep the original to be used for final C.O. certification of the site required by Transportation.

If a temporary CO is needed, a copy of the original TCL that was stamped as approved by the City will be needed. This plan must include a statement that identifies the outstanding items that need to be constructed or the items that have not been built in "substantial compliance," as well as the signed and dated stamp of a NM registered architect or engineer. Submit this TCL with a completed Drainage and Transportation Information Sheet to Hydrology at the Development Services Center of Plaza Del Sol Building.

When the site is completed and a final C.O. is requested, use the original City stamped approved TCL for certification. A NM registered architect or engineer must stamp, sign, and date the certification TCL along with indicating that the development was built in "substantial compliance" with the TCL. Submit this certification TCL with a completed Drainage and Transportation Information Sheet to Hydrology at the Development Services Center of Plaza Del Sol Building.

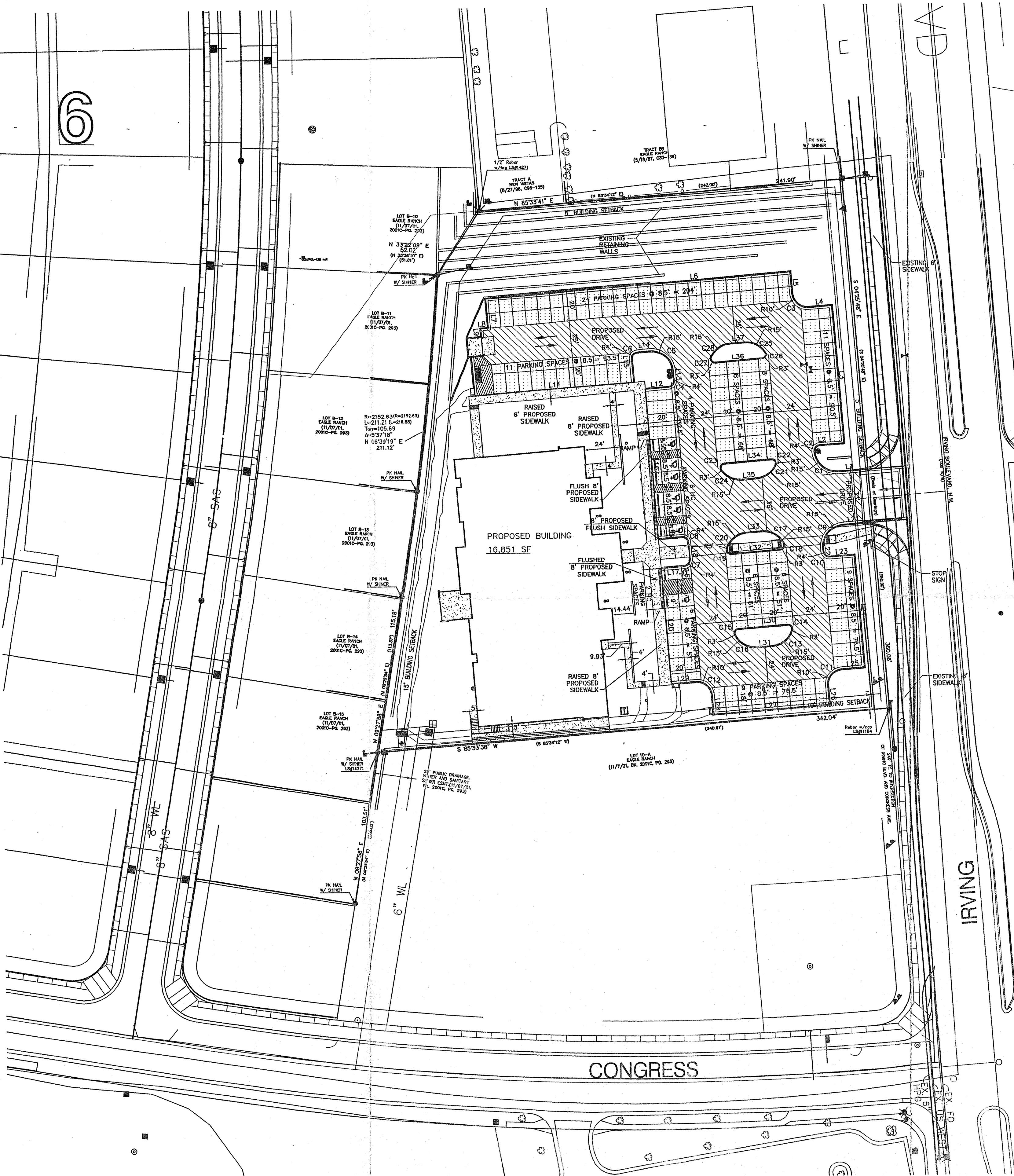
Once verification of certification is completed and approved, notification will be made to Building Safety to issue Final C.O. To confirm that a final C.O. has been issued, call Building Safety at 924-3306.

Sincerely,

Phillip J. Lovato, E.I., C.F.M.  
Engineering Associate, Planning Dept.  
Development and Building Services

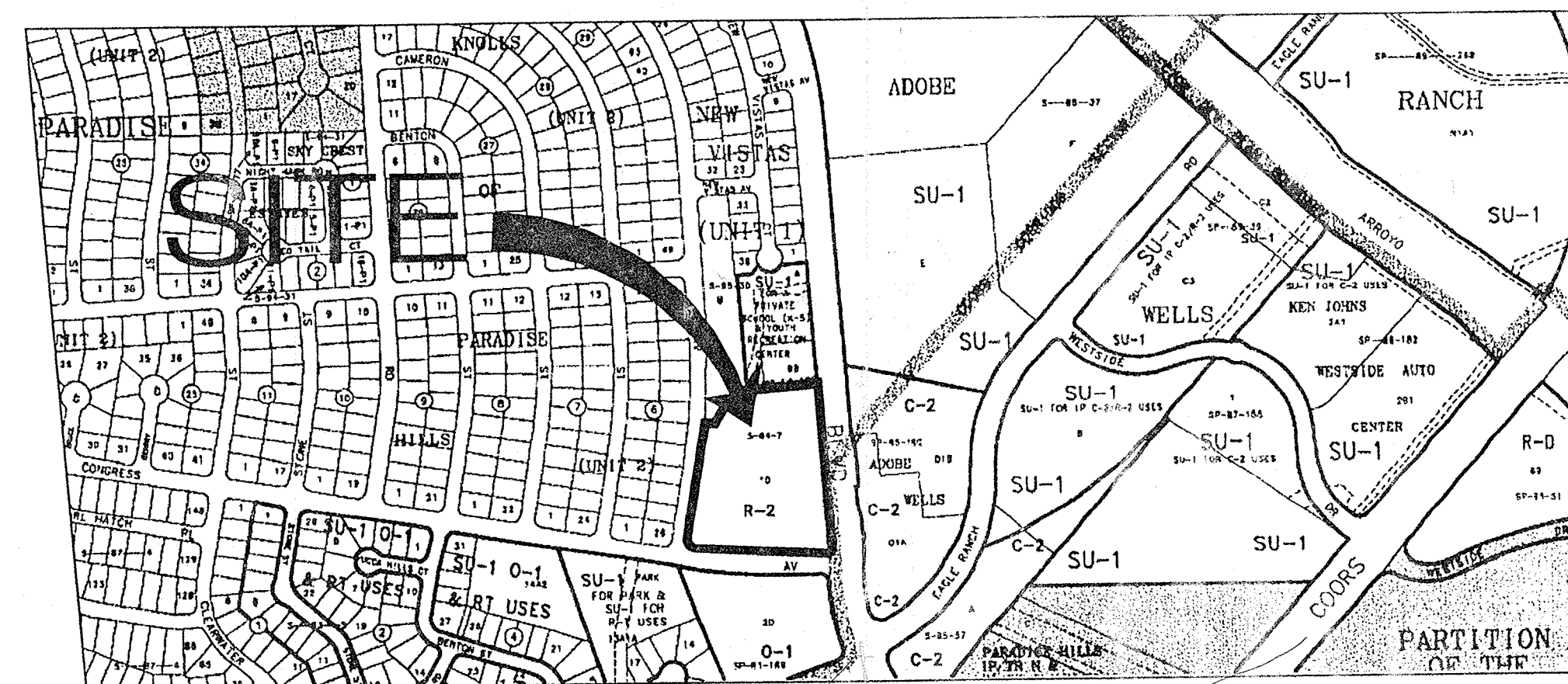
cc: file

6



PAVING PLAN GENERAL NOTES:

- A. See sheet CG-1 for complete list of general notes and symbol/linetype legend that apply to all sheets.
- B. Surface features associated with underground utilities are shown on paving plans for clarity. See applicable utility plans for construction notes and details.
- C. See grading plans for over excavation/engineered fill limits.



VICINITY MAP B-13-Z

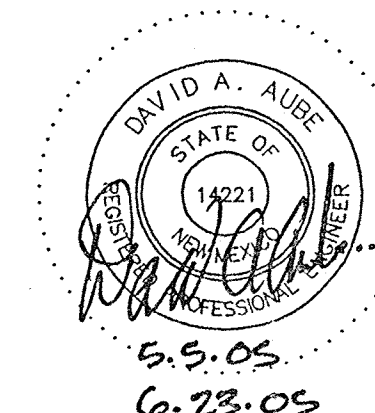
NOT TO SCALE

UPC# 101306525007430519

CURVE TABLE				
CURVE	LENGTH	RADIUS	TANGENT	DELTA
C1	23.59	15.00	15.03	90°06'34"
C2	6.28	4.00	3.99	89°53'26"
C3	15.71	10.00	10.00	90°00'00"
C4	6.28	4.00	4.00	90°00'00"
C5	23.56	15.00	15.00	90°00'00"
C6	6.28	4.00	4.00	90°00'00"
C7	6.28	4.00	4.00	89°59'17"
C8	6.28	4.00	4.00	90°00'43"
C9	23.56	15.00	15.00	90°00'00"
C10	6.28	4.00	4.00	90°00'00"
C11	15.71	10.00	10.00	90°00'00"
C12	15.71	10.00	10.00	90°00'00"
C13	18.35	15.00	10.52	70°05'09"
C14	5.76	3.00	4.28	109°54'51"
C15	5.76	3.00	4.28	109°54'51"
C16	18.35	15.00	10.52	70°05'09"
C17	18.35	15.00	10.52	70°05'09"
C18	5.76	3.00	4.28	109°54'51"
C19	5.76	3.00	4.28	109°54'51"
C20	18.35	15.00	10.52	70°05'09"
C21	16.08	15.00	8.91	61°25'34"
C22	6.21	3.00	5.05	118°34'26"
C23	6.21	3.00	5.05	118°34'26"
C24	16.08	15.00	8.91	61°25'34"
C25	16.08	15.00	8.91	61°25'34"
C26	6.21	3.00	5.05	118°34'26"
C27	6.21	3.00	5.05	118°34'26"
C28	16.08	15.00	8.91	61°25'34"

LINE TABLE		
LINE	LENGTH	BEARING
L1	13.64	S85°34'12"W
L2	16.00	N85°34'12"E
L3	93.50	N04°23'29"W
L4	15.07	S85°34'12"W
L5	15.00	N04°25'48"W
L6	204.00	S85°34'12"W
L7	20.00	S04°25'48"E
L8	5.00	S85°34'12"W
L9	5.33	S04°25'48"E
L10	26.33	S04°25'48"E
L11	107.00	S85°34'12"W
L12	16.00	N85°34'12"E
L13	6.63	N04°26'22"W
L14	8.50	S85°34'12"W
L15	16.00	S04°25'48"E
L16	102.00	S04°22'27"E
L17	16.00	N85°34'12"E
L18	12.00	N04°25'05"W
L19	16.00	S85°34'12"W
L20	78.70	S04°25'45"E
L21	12.76	S85°34'12"W
L22	2.33	S04°25'48"E
L23	16.00	N85°34'12"E
L24	76.50	S04°25'48"E
L25	15.00	S85°34'12"W
L26	15.00	S04°25'48"E
L27	76.50	S85°34'12"W
L28	15.00	N04°25'48"W
L29	16.50	S85°34'12"W
L30	32.56	S85°34'12"W
L31	10.00	N85°34'12"E
L32	32.56	S85°34'12"W
L33	10.00	N85°34'12"E
L34	31.08	S85°34'12"E
L35	10.00	N85°34'12"E
L36	31.08	S85°34'12"W
L37	10.00	N85°34'12"E

THE TELCK-HENSLEY ENGINEERING GROUP



THE DESIGN GROUP ARCHITECTS • PLANNERS • INTERIOR DESIGN

PROJECT NAME: SOUTHWEST MEDICAL OFFICE BUILDING

REVISIONS

NO.	DATE	DESCRIPTION

SHEET TITLE:

TRAFFIC CIRCULATION LAYOUT

DESIGNED: PMD SCALE: VARIES

CHECKED: DAA JOB NO. 2260

DATE: 04/22/05 COMP. FILE: 04-164TCL

TCL

TABULATED PARKING—REQUIRED BY ZONING		
PARKING REQUIRED	REGULAR	77 TOTAL
HC	7	TOTAL
VAN HC	1	TOTAL
		85 TOTAL
PARKING PROVIDED	REGULAR	102 TOTAL
HC	7	TOTAL
VAN HC	1	TOTAL
		110 TOTAL

PARKING REQUIRED  
1 SPACE/200SF MEDICAL OFFICE = 85 SPACES  
01 5 SPACES/DOCTOR  
6 DOCTORS = 30 SPACES

TRAFFIC CIRCULATION LAYOUT APPROVED

Signature: [Signature] Date: 4/23/05

LEGEND

NEW ASPHALT

CONCRETE

GRAPHIC SCALE

( IN FEET )  
1 inch = 40 ft.

A1 TRAFFIC CONTROL PLAN

SCALE: 1" = 40'