

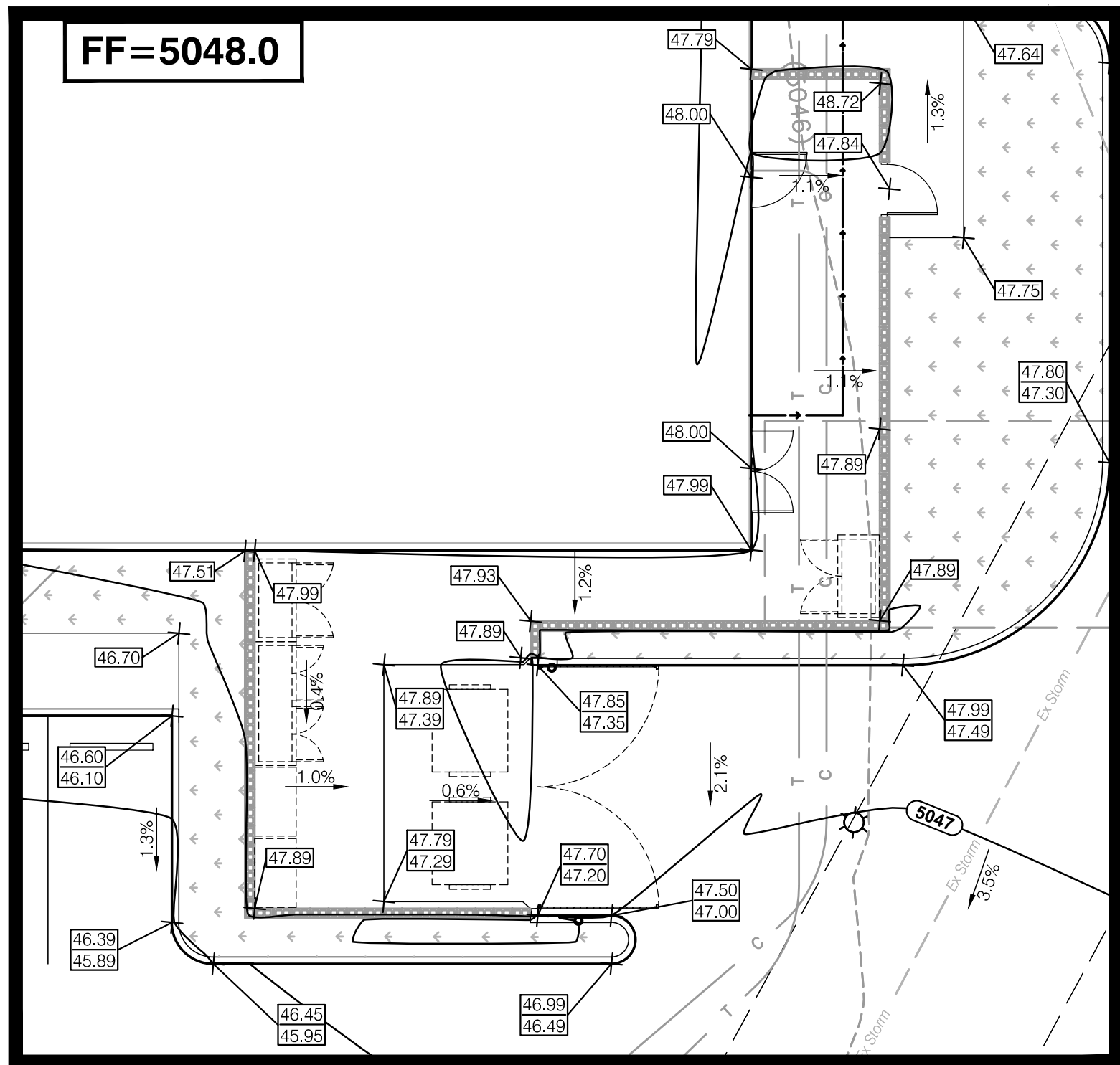
ENLARGED ENTRY PLAN
SCALE: 1" = 10'

- 5:1 MAX
- VARIES
- STORM DRAIN
- 4" DIAMETER PERFORATED PVC PIPE PLACED WITH HOLES DOWN
 - 12" CLASS 2 PERMEABLE OR $\frac{3}{4}$ " CRUSHED ROCK
 - MIRAFI 140N OR EQUAL GEOTEXTILE FABRIC
 - 6" SANDY LOAM
 - 6" PERMEABLE PLANTING SOIL
 - CLEAN OUT
 - DRAIN INLET GRATE TO BE AT 6" ABOVE BOTTOM OF BIORETENTION

BIO-RETENTION
SCALE: NONE

- 5:1 MAX
- PERMEABLE PLANTING SOIL
- 4" DIAMETER PERFORATED PVC PIPE WITH HOLES DOWN
 - 12" CLASS 2 PERMEABLE OR $\frac{3}{4}$ " CRUSHED ROCK
 - MIRAFI 140N OR EQUAL GEOTEXTILE FABRIC
 - 6" SANDY LOAM

BIO-SWALE
SCALE: NONE



TRASH ENCLOSURE & SERVICE YARD
SCALE: 1" = 10'

New Mexico

CALL BEFORE YOU DIG!

NEW MEXICO LAW REQUIRES EXCAVATORS TO PROVIDE ADVANCE NOTICE TO THE ONE CALL-NOTIFICATION SYSTEM PRIOR TO EXCAVATION. REAFFIRMATION OF LINE LOCATION REQUIRED EVERY TEN (10) DAYS DURING EXCAVATION.

New Mexico One Call System, Inc.
www.nmonecall.org
1-800-321-ALERT

STORM STRUCTURE SCHEDULE

- | | |
|--|--|
| PR. CATCH BASIN
GRATE = 45.33
12" INV. IN = 40.8
12" INV. OUT = 40.8 | PR. CATCH BASIN
GRATE = 45.10
12" INV. IN = 41.07
12" INV. OUT = 41.07 |
| PR. CATCH BASIN
GRATE = 45.95
12" INV. IN = 41.91
12" INV. OUT = 41.91 | PR. 10" AREA DRAIN
GRATE = 46.00
12" INV. OUT = 42.50 |
| PR. 10" AREA DRAIN
GRATE = 46.30
4" INV. IN = 43.07
4" INV. OUT = 43.07 | PR. 10" AREA DRAIN
GRATE = 45.95
4" INV. IN = 42.58
4" INV. OUT = 42.58 |
| PR. 10" AREA DRAIN
GRATE = 46.83
4" INV. IN = 42.00
4" INV. OUT = 42.00 | PR. 10" AREA DRAIN
GRATE = 44.29
8" INV. OUT = 42.00 |

PLAN NOTES

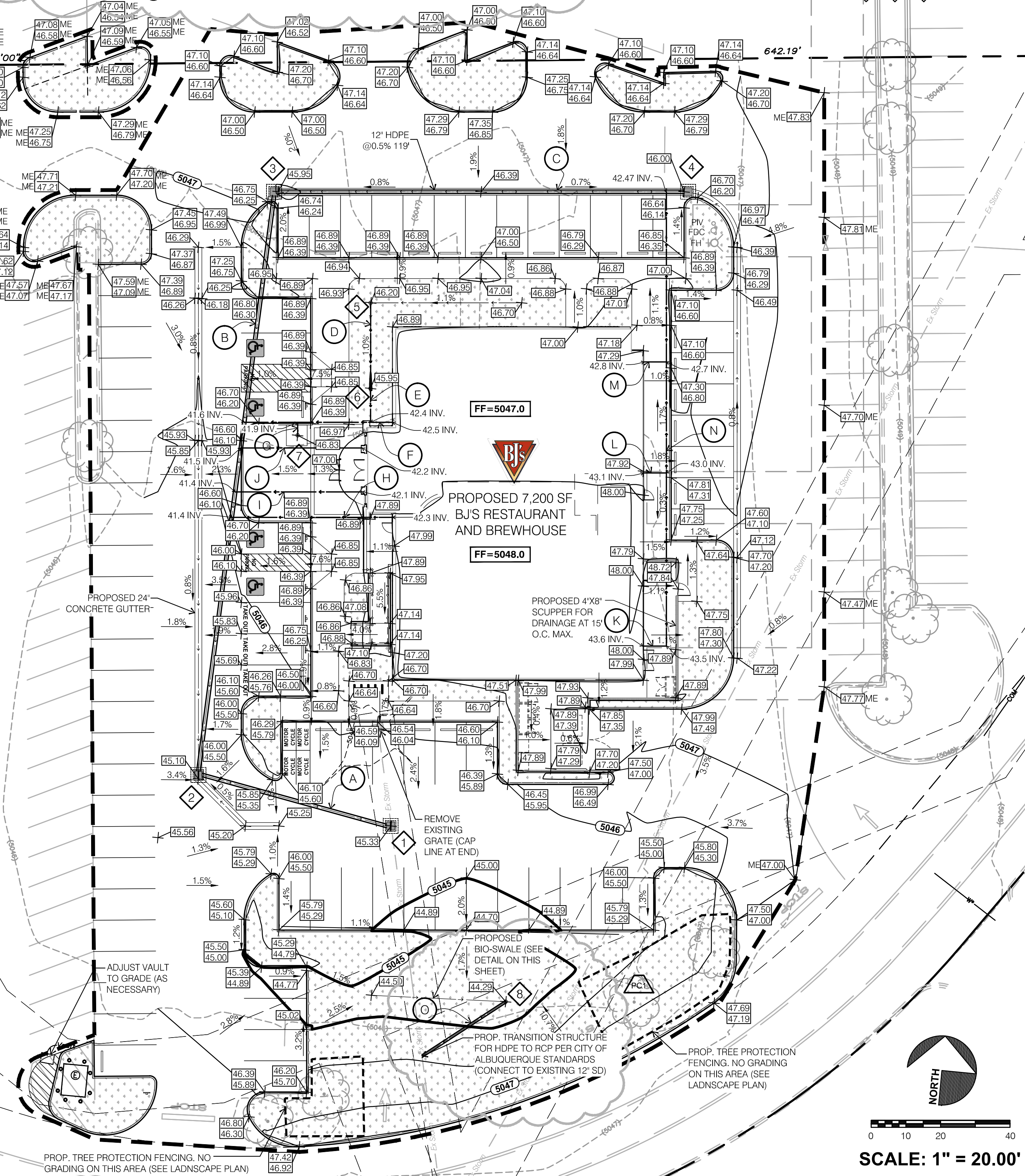
- PAVEMENT SHALL BE FLUSH WITH WALK IN ACCESSIBLE PARKING AREA. SEE DETAIL ON SHEET C6.
- RAISE/LOWER ALL EXISTING UTILITIES EXPECTED TO BE AT GRADE TO PROPOSED GRADE ELEVATIONS.
- PROPOSED 6" ROOF DRAIN LINES SHALL BE INSTALLED AT A MINIMUM OF 1.0% SLOPE. INVERT ELEVATIONS PROVIDED AT EXISTING CATCH BASINS ARE SHOWN AT THE MAXIMUM DEPTH POSSIBLE. INVERTS MAY BE ELEVATED IN THE FIELD IF NECESSARY.
- ALL PROPOSED STORM PIPING 8" TO 12" SHALL BE HIGH DENSITY POLYETHYLENE OR APPROVED EQUAL AND 15" & GREATER SHALL BE RCP OR APPROVED EQUAL.

STORM PIPE SCHEDULE

- | | |
|---|--|
| A 55.1 LINEAR FEET OF 12" HDPE AT 0.5% SLOPE | I 36.6 LINEAR FEET OF 3" HDPE AT 2.0% SLOPE |
| B 167.2 LINEAR FEET OF 12" HDPE AT 0.5% SLOPE | J 34.9 LINEAR FEET OF 3" HDPE AT 2.0% SLOPE |
| C 117.0 LINEAR FEET OF 12" HDPE AT 0.5% SLOPE | K 6.8 LINEAR FEET OF 4" HDPE AT 2.0% SLOPE |
| D 24.7 LINEAR FEET OF 4" HDPE AT 2.0% SLOPE | L 6.6 LINEAR FEET OF 3" HDPE AT 2.0% SLOPE |
| E 9.2 LINEAR FEET OF 4" HDPE AT 2.0% SLOPE | M 6.4 LINEAR FEET OF 4" HDPE AT 2.0% SLOPE |
| F 42.7 LINEAR FEET OF 4" HDPE AT 2.0% SLOPE | N 130.9 LINEAR FEET OF 6" HDPE AT 1.0% SLOPE |
| G 4.4 LINEAR FEET OF 4" HDPE AT 2.0% SLOPE | O 29 LINEAR FEET OF 8" HDPE AT 1.0% SLOPE |
| H 46.3 LINEAR FEET OF 4" HDPE AT 2.0% SLOPE | |

GRADING LEGEND

- PROPOSED SPOT ELEVATION:
(AT VERTICAL ELEVATION CHANGE)
- PROPOSED SPOT ELEVATION:
(AT RETAINING WALL)
- ELEVATIONS OUTSIDE PROJECT LIMITS:
- PROPOSED CONTOUR:
- EXISTING CONTOUR:
- 6" PVC DRAIN LINE TO EXISTING STORM SYSTEM, SLOPE ALL PIPES 1% MIN.
- 10" AREA DRAIN TO BE NYOPLAST INLINE DRAIN WITH DOMED GRATE (OR APPROVED EQUAL)
- MATCH EXISTING ELEVATION (TYP.):
- GRADING & OVERALL LIMITS (PAVEMENT SECTION TO MATCH EXISTING):
- CROWNLINE



wd

19100 VON KARMAN AVE
SUITE 600
IRVINE, CA 92612
949.753.7676 T

WDPARTNERS.COM

7 PROTOTYPE

BJ'S RESTAURANT & BREWHOUSE
COTTONWOOD MALL
ALBUQUERQUE, NM

BJ's

COLLEEN REZAREK
NEW MEXICO
17291
PROFESSIONAL ENGINEER

Exp. Date: 12/31/2015
Date: 09/08/2014
PROJECT NO. BJSBJ0211

REVISIONS

NO.	DESCRIPTION	DATE
PC1	08-11-14	

C2

SITE GRADING AND DRAINAGE PLAN