

CITY OF ALBUQUERQUE

Planning Department
Alan Varela, Director



Mayor Timothy M. Keller

July 18th , 2024

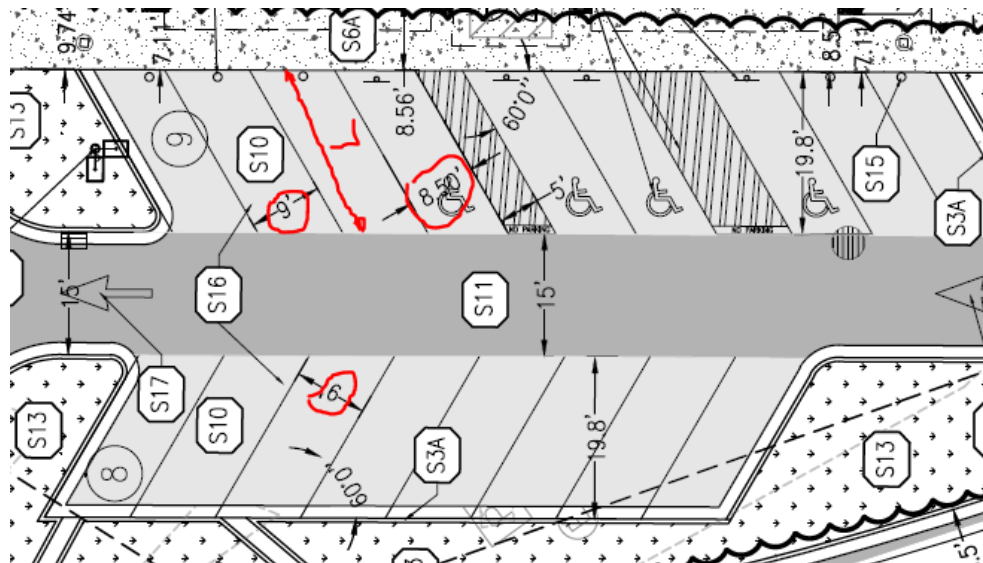
Brandon Goldberg,
GreenbergFarrow
8600 W Bryn Mawr Avenue, Suite 800N,
Chicago, IL 60631

Re: Bubba's 33
10000 Coors Blvd Bypass NW
Traffic Circulation Layout
 Engineer's/Architect's Stamp 07-11-24 (B14D004H)

Dear Mr. Goldberg,

Based upon the information provided in your submittal received 07-12-24, the above referenced plan cannot be approved for Building Permit until the following comments are addressed:

1. Please identify all existing buildings, doors, structures, sidewalks, curbs, drive pads, wall and anything that influences the parking and circulation on the site.
2. The site location looks like already an existing parking space for another facility. Please provide if any kind of approval/agreement was sought.
3. For transportation approval please provide a separate set of drawings showing the site plan and related transportation details (ADA Sign, bike rack, ADA parking etc.).
4. All accessways to the site from the adjacent roadway shall be ADA-compliant. Provide an ADA pathway from existing sidewalk to building.
5. The minimum parking stall dimensions for angle parking are:



CITY OF ALBUQUERQUE

Planning Department
Alan Varela, Director



Mayor Timothy M. Keller

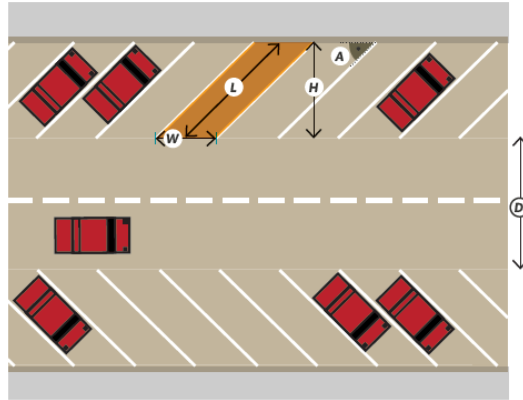


TABLE 7.4.78 Dimensions for Standard Angle Parking

Angle (A)	Stall Length (L)	Stall Width (W)	Stall Depth (H)	Drive Aisle (D)
30°	32.7 ft.	17 ft.	16.4 ft.	11 ft.
45°	26.5 ft.	12 ft.	18.7 ft.	11 ft.
60°	22.9 ft.	9.8 ft.	19.8 ft.	15 ft.
75°	20.3 ft.	8.8 ft.	19.6 ft.	22 ft.
90°	18 ft.	8.5 ft.	18 ft.	24 ft.

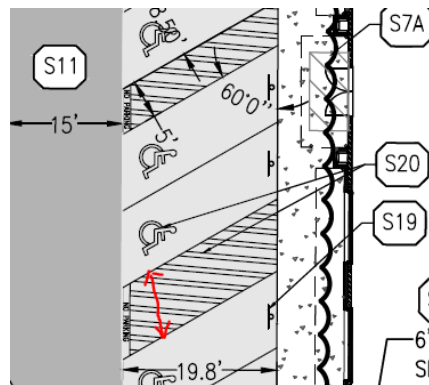
PO Box 1293

Albuquerque

6. Show the dimension of Van accessible aisles in the ADA accessible spaces. Also clarify whether these aisles are flush with the ramp.

NM 87103

www.cabq.gov



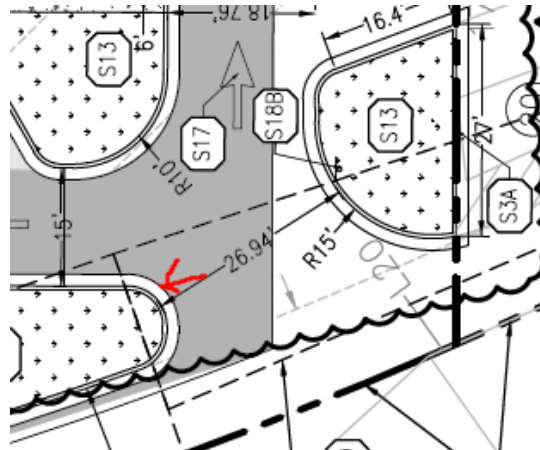
7. The ADA accessible parking sign must have the required language per 66-7-352.4C NMSA 1978 **"Violators Are Subject to a Fine and/or Towing."** Please call out detail and location of signs.
8. Bicycle racks shall be sturdy and anchored to a concrete pad. Show more details.
9. Show all drive aisle widths and radii. Some dimensions are not shown.

CITY OF ALBUQUERQUE

Planning Department
Alan Varela, Director



Mayor Timothy M. Keller



10. Please specify the City Standard Drawing Number when applicable.
11. Provide solid waste and fire marshal approval.

PO Box 1293

Once corrections are complete resubmit

Albuquerque

1. The Traffic Circulation Layout
2. A Drainage Transportation Information Sheet (DTIS)
3. Send an electronic copy of your submittal to PLNDRS@cabq.gov.
4. The \$75 re-submittal fee.

NM 87103

for log in and evaluation by Transportation.

If you have any questions, please contact me at (505) 924-3880.

www.cabq.gov

Sincerely,

Muhammad Saeed Zafar
Engineering Assistant, Planning Dept.
Development Review Services

\xxx via: email
C: CO Clerk, File