

CITY OF ALBUQUERQUE

Planning Department
Alan Varela, Director



Mayor Timothy M. Keller

March 17, 2026

Ronald R. Bohannon, PE
Tierra West, LLC
5571 Midway Park Place NE
Albuquerque, NM 87109

Re: Self-Storage Facility
3601 Seven Bar Loop Rd. NW
Albuquerque, NM 87102
Traffic Circulation Layout
Engineer's Stamp 02-26-26 (B14D019)

Dear Mr. Bohannon,

Based upon the information provided in your submittal received 02-27-26, the above referenced plan cannot be approved for Building Permit until the following comments are addressed:

PO Box 1293

Albuquerque

NM 87103

www.cabq.gov

1. Provide Zoning approval and/or concurrence on the interpreted parking reduction credits and provided parking calculations.
2. Verify that the minimum calculated required number of parking spaces are reflected in the design.
3. Provide a copy of Solid Waste and Fire Marshal approvals.
4. Provide Seven Bar Loop NW right of way width.
5. Call out driveway radii.
6. Call out site triangles 11'x11' dimensions.
7. Provide building entrance in relation to ADA pathway.
8. There are several keyed notes that reference plan sheets TCL-3 and TCL-4. Please provided or correct as needed.
9. The crosswalk and ADA access aisle call out key note #9 which reference TCL-3. Ensure that the detail drawing include striping details.
10. ADA access aisles shall have blue diagonal striping and the words "**NO PARKING**" in capital letters, each of which shall be at least one foot high and at least two inches wide, placed at the rear of the parking space so as to be close to where an adjacent vehicle's rear tire would be placed (66-1-4.1.B NMSA 1978).
11. HC parking detail on sheet TCL-2 shows a ramp and sidewalk which is not reflected on site plan. Please correct as needed.
12. Key note #10 is noted. Reference the correct detail sheet for site pavement detail.

CITY OF ALBUQUERQUE

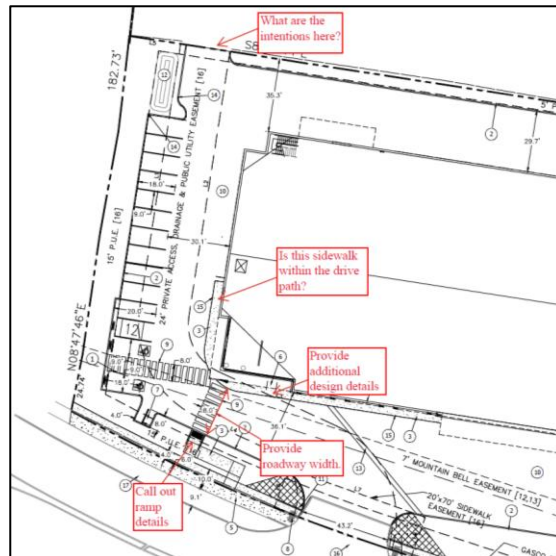
Planning Department
Alan Varela, Director



Mayor Timothy M. Keller

13. See below redline site plan:

- Provide roadway width.
- Provide a bike stall design drawing in relation to the sidewalk width.
- Call out ramp details or refer to the associated key note.
- We notice key note #15. It appears that the proposed sideway falls within the drive path. Provide additional design details in regards to intentions and safety, showing a delineation between sidewalk and roadway.
- What are the intentions for the cross connectivity with the adjacent property? Provide additional design details or call out fencing.



PO Box 1293

Albuquerque

NM 87103

www.cabq.gov

Once corrections are complete, resubmit the following for evaluation by Transportation:

1. The revised Traffic Circulation Layout
2. Send an electronic copy of your submittal to ABQ-plan.

If you have any questions, please contact me at (505) 924-3880.

Sincerely,

Tasha Felton

Tasha Felton
Assistant Engineer, Planning Dept.
Development Review Services
\tf via: email
C: CO Clerk, File