

CITY OF ALBUQUERQUE



March 6th, 2018

Kevin Patton, Pulte Homes of New Mexico, kevin.patton@pultegroup.com
Copy: Michael@superiorstormwater.com

Site: Glendesto

Re: Drainage Ordinance (14-5-2-1) Violations for Erosion and Sediment Control and Construction Site Waste(s)

Dear Mr. Patton,

The following violations were observed at today's inspection.

1. There were no sediment BMPs for the work shown on the Work Order construction plans: filter socks at Modesto and San Pedro, inlet protection and no sweeping.
2. San Pedro Blvd was covered in dirt.
3. No inlet protection at the side inlet to the channel.
4. Sediment in gutter pan on easement street.
5. Concrete wash-out in the street.
6. There was no acceptable wash-out facility on-site.
7. Dirt pile in easement street without BMPs.
8. There was earth disturbance outside the project limits on the west side and no sediment BMPs.

PO Box 1293

Albuquerque

New Mexico 87103

www.cabq.gov

Photos are shown below:



Intersection of San Pedro and Glendale.

CITY OF ALBUQUERQUE



San Pedro Blvd covered in dirt. No BMPs

PO Box 1293

Albuquerque

New Mexico 87103

www.cabq.gov



Dirt pile on shoulder of San Pedro, No BMPs. Drains to unprotected inlet.

CITY OF ALBUQUERQUE



Neither of the inlets at the north end of the project had inlet protection.

PO Box 1293

Albuquerque

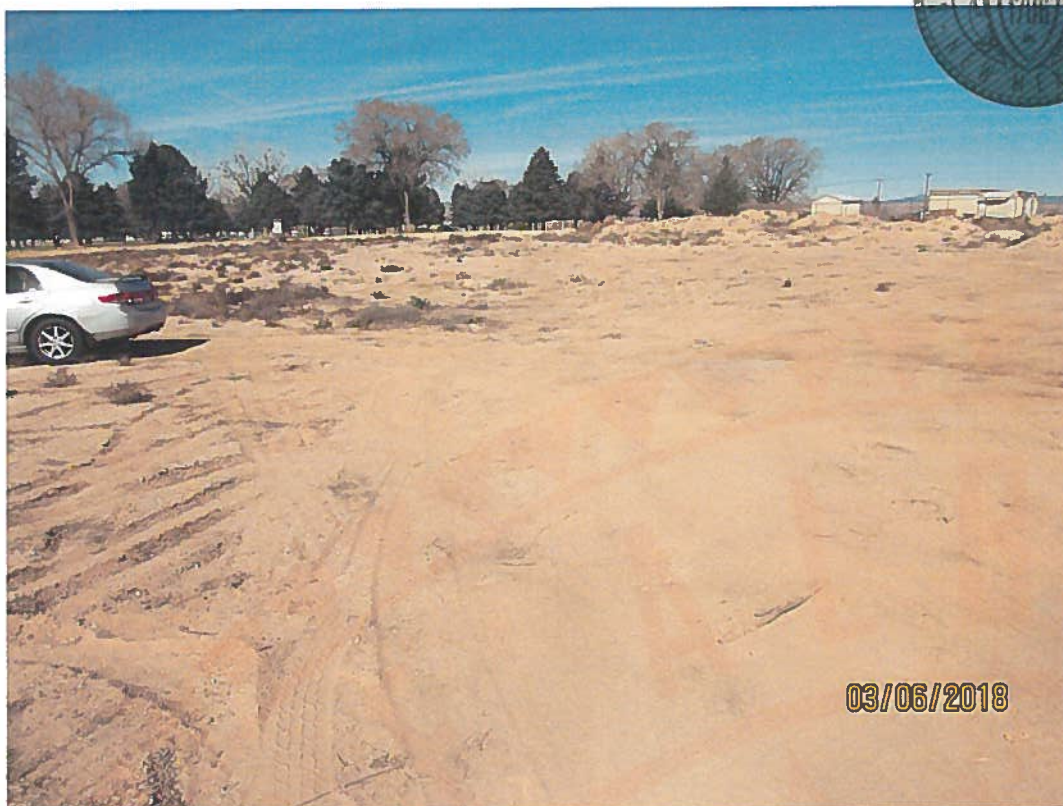
New Mexico 87103

www.cabq.gov



Wash-out in Modesto. No wash-out facility on-site.

CITY OF ALBUQUERQUE



Disturbed area west of project boundaries. Subcontractor car parked in area.

PO Box 1293

Albuquerque

New Mexico 87103

www.cabq.gov



Disturbed area outside project boundaries with no sediment BMPs.

CITY OF ALBUQUERQUE



No sediment BMP at inlet to channel.

PO Box 1293

Albuquerque

NM 87103

www.cabq.gov



Sediment in gutter in the easement street.

**Required Mitigation:**

1. Provide sediment BMPs for the work shown on the Work Order construction plans. These include filter socks at Modesto and San Pedro, inlet protection and sweeping. See approved Erosion and Sediment Control Plan.
2. Remove sediment from San Pedro Blvd and Modesto Ave west of San Pedro.
3. Sediment is not to be observed in Modesto Ave west of San Pedro and on the south-bound lane of San Pedro.
4. Provide inlet protection at the side inlet to the channel.
5. Remove sediment in gutter pan on easement street uphill from the side inlet to the channel and keep the gutter pan free of sediment.
6. Remove concrete wash-out in the street.
7. Provide an acceptable wash-out facility on-site and have workers use it.
8. Provide a sediment BMP for the dirt pile in easement street or remove it. Do not stockpile dirt in the street without a sediment BMP.
9. Provide sediment BMP(s) for the disturbed area west of the project.

PO Box 1293

If violations are not mitigated within 30 days, the property owner is subject to a fine of \$500/day per the City's Drainage Control Ordinance.

Albuquerque

If you would like to schedule a follow-up inspection at a day and time of your convenience, prior to 30 days from the date of this letter please let me know.

If you have any questions, you can contact me at 924-3420.

NM 87103

Sincerely,

www.cabq.gov

Curtis Cherne, P.E.
Principal Engineer, Stormwater Quality
Planning Dept.