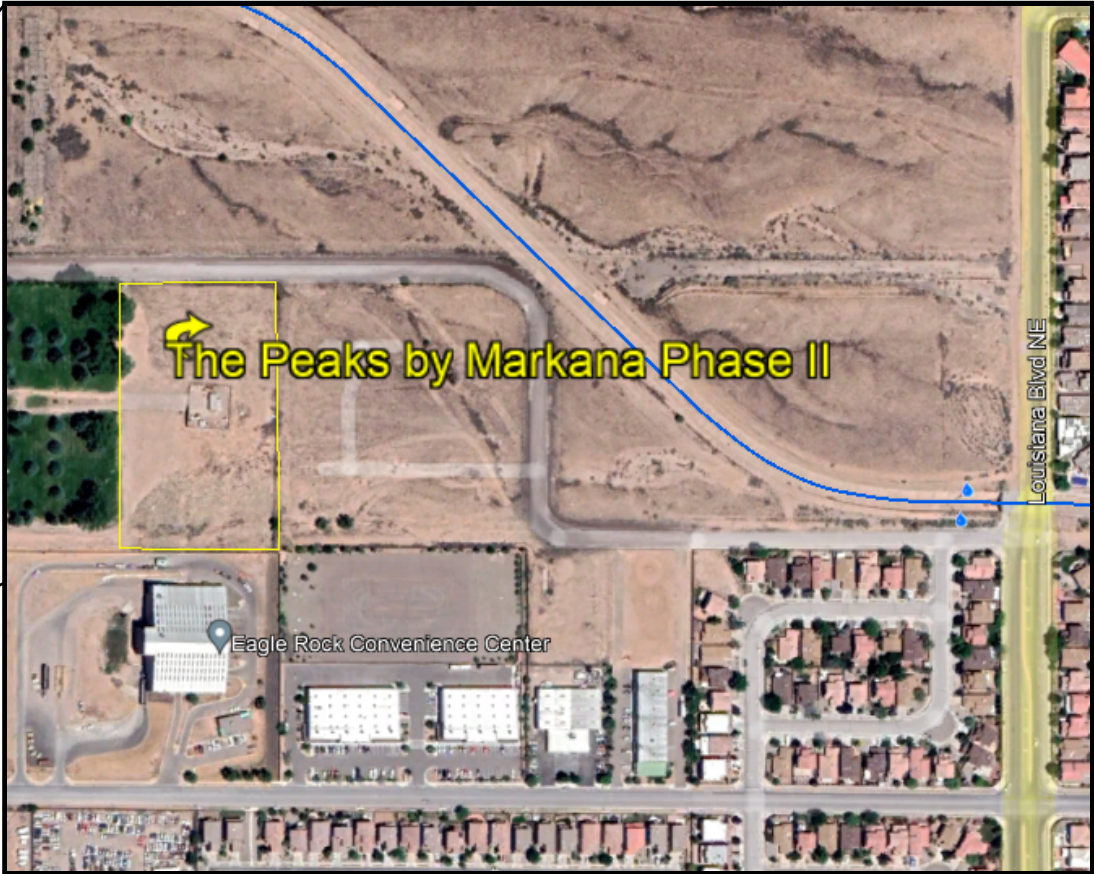


THE PEAKS BY MARKANA PHASE II


GLENDALE AVE NE

TEMPORARY EROSION AND SEDIMENT CONTROL PLAN

PAGE INDEX	
1	TITLE PAGE
2	SWPPP INFO AND NOTES
3	DETAILS
4	TEMPORARY EROSION CONTROL PLAN



GPS COORDINATES: 35.1899, -106.5741



 02/02/2023 CPESC Stamp	The Peaks By Markana		PROJECT TITLE	
	ALBUQUERQUE, NM, BERNALILLO COUNTY			CITY, COUNTY, STATE
	04/26/2021	DATE	INSPECTIONS PLUS	
	B. Henriksen / J. Tolman		DRAWN BY	

STORMWATER POLLUTION PREVENTION PLAN INFORMATION

PERMIT NUMBER: NMR1004QW	
NMR100000 STATE OF NEW MEXICO, EXCEPT INDIAN COUNTRY NMR10I000 INDIAN COUNTRY WITHIN THE STATE OF NEW MEXICO, EXCEPT NAVAJO RESERVATION LANDS THAT ARE COVERED UNDER ARIZONA PERMIT AZR10I000 AND UTE MOUNTAIN RESERVATION LANDS THAT ARE COVERED UNDER COLORADO PERMIT COR10I000.	
OPERATOR NAME: KLG 9, LLC	
OPERATOR POINT OF CONTACT: FAIZEL KASSAM FKASSAM@LEGACYDM.NET	
NOI PREPARED BY: INSPECTIONS PLUS	
PROJECT/SITE NAME: THE PEAKS BY MARKANA PHASE 2	
PROJECT/SITE ADDRESS: GLENDALE AVE NE ALBUQUERQUE, NM 87113	
LATITUDE	35.1899
LONGITUDE	-106.5741
ESTIMATED PROJECT START DATE	06/06/2022
ESTIMATED PROJECT COMPLETION DATE	01/31/2024
ESTIMATED AREA TO BE DISTURBED	5.1 acres
TYPE OF CONSTRUCTION	NEW- ABOVE GROUND
DEMOLITION OF ANY STRUCTURES, 10,000 SQ FT OF GREATER BUILT OR RENOVATED BEFORE JANUARY 1, 1980?	NO
WAS THE PREDEVELOPMENT LAND USED FOR AGRICULTURE?	NO
COMMENCED EARTH DISTURBING ACTIVITIES?	NO
DISCHARGE TO MS4? MS4 NAME?	N/A
SURFACE WATERS WITHIN 50FT?	NO
RECEIVING WATER?	ONSITE STORMWATER POND
IS RECEIVING WATER IMPAIRED? TIER DESIGNATION	NO
WHAT ARE THE IMPAIRMENTS, IF ANY?	N/A
SWPPP CONTACT INFORMATION: STEPHEN PENDERGRAFT spendergraft@legacydm.net	
ENDANGERED SPECIES CRITERIA: CRITERION "A"; NO CRITICAL HABITATS	
HISTORIC PRESERVATION CRITERIA: CRITERION "A"; PREVIOUS SURVEYS	

EROSION CONTOL NOTES
ESC Plan Standard Notes (2021-03-24)

- 1.All Erosion and Sediment Control (ESC) work on these plans, except as otherwise stated or provided hereon shall be permitted, constructed, inspected, and maintained in accordance with:
- a.The City Ordinance § 14-5-2-11, the ESC Ordinance,
b.The EPA's 2017 Construction General Permit (CGP), and
c.The City Of Albuquerque Construction BMP Manual.
- 2.All BMP's must be installed prior to beginning any earth moving activities except as specified hereon in the Phasing Plan. Construction of earthen BMP's such as sediment traps, sediment basins, and diversion berms shall be completed and inspected prior to any other construction or earthwork. Self-inspection is required after installation of the BMPs and prior to beginning construction.
- 3.Self-inspections - At a minimum a routine compliance self-inspection is required to review the project for compliance with the Construction General Permit once every 14 days and after any precipitation event of 1/4 inch or greater until the site construction has been completed and the site determined as stabilized by the city. Reports of these inspections shall be kept by the person or entity authorized to direct the construction activities on the site and made available upon request.
- 4.Corrective action reports must be kept by the person or entity authorized to direct the construction activities on the site and made available upon request.
- 5.Stabilization reports must be kept by the person or entity authorized to direct the construction activities on the site and made available upon request. Reports should include records of weed removal per City Ordinance (§ 9-8-1), sterilization, soil test results and recommendation, materials and manufacturer's specifications for application rates, estimated functional longevity, methods of application, inspection and maintenance. The reduced self-inspection schedule in CGP 4.4.1 applies to stabilized area and any damaged or worn stabilization must be identified in the reports along with weed problems. Corrective actions for stabilization shall be documented in a stabilization report including actual rates and dates of stabilization, and the materials and manufacturer's specifications used.
- 6.BMPs shall be inspected and maintained until all disturbed areas are stabilized in accordance with the Final Stabilization Criteria (CGP 2.2.14.b). Generally, all disturbed areas, other than structures and impervious surfaces, must have uniform perennial vegetation that provides 70 percent or more of the cover provided by native vegetation or seed the disturbed area and provide non-vegetative mulch that provides cover for at least three years without active maintenance. Final stabilization must be approved by the City of Albuquerque prior to removal of BMPs and discontinuation of inspections.

 02/02/2023 CPESC Stamp	The Peaks By Markana	
	PROJECT TITLE	
	ALBUQUERQUE, NM, BERNALILLO COUNTY	
	CITY, COUNTY, STATE	
	04/26/2021	DATE
	B. Henriksen / J. Tolman	DRAWN BY
		

SEDIMENT TRACK OUT CONTROL



- BMP Objectives**
- Sediment Control

SILT FENCE



- BMP Objectives**
- Sediment Control
 - Sheet Flow Runoff Control
 - Wind Erosion Control

BERMS AND SWALES



- BMP Objectives**
- Runoff Control
 - Run-on Diversion

MULCH SOCK/STRAW WATTLE



- BMP Objectives**
- Sediment Control
 - Reduce Runoff Velocity
 - Inlet Protection


INLET PROTECTION





- BMP Objectives**
- Sediment Control
 - Sheet Flow Runoff Control
 - Wind Erosion Control


LEGEND


TEMPORARY EROSION AND SEDIMENT CONTROL PLAN


 PROJECT PERIMETER


 EXISTING BLOCK WALL


 POSTING SIGN


 OUTFALL


 STAGING AREA


 FLOW DIRECTION


 SILT FENCE


 DEBRIS CONTAINMENT


 CHEMICAL TOILET


 CONCRETE WASHOUT

 STABILIZED CONTRUCTION ENTRANCE

 TEMPORARY SEDIMENT POND

 Existing Screen Fence

 Offsite Disturbance



02/02/2023
CPESC Stamp

The Peaks By Markana

PROJECT TITLE

ALBUQUERQUE, NM, BERNALILLO COUNTY

CITY, COUNTY, STATE

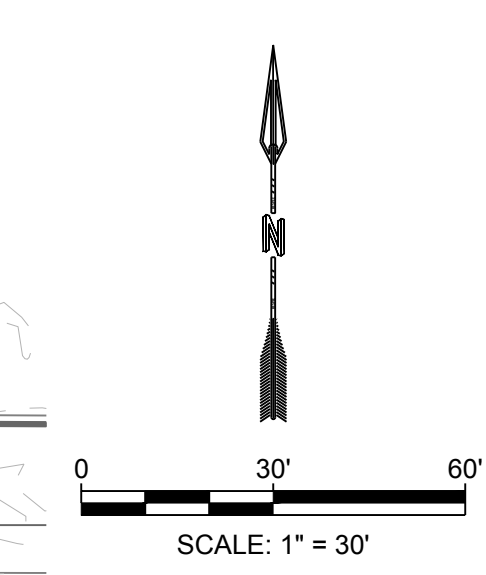
04/26/2021

DATE

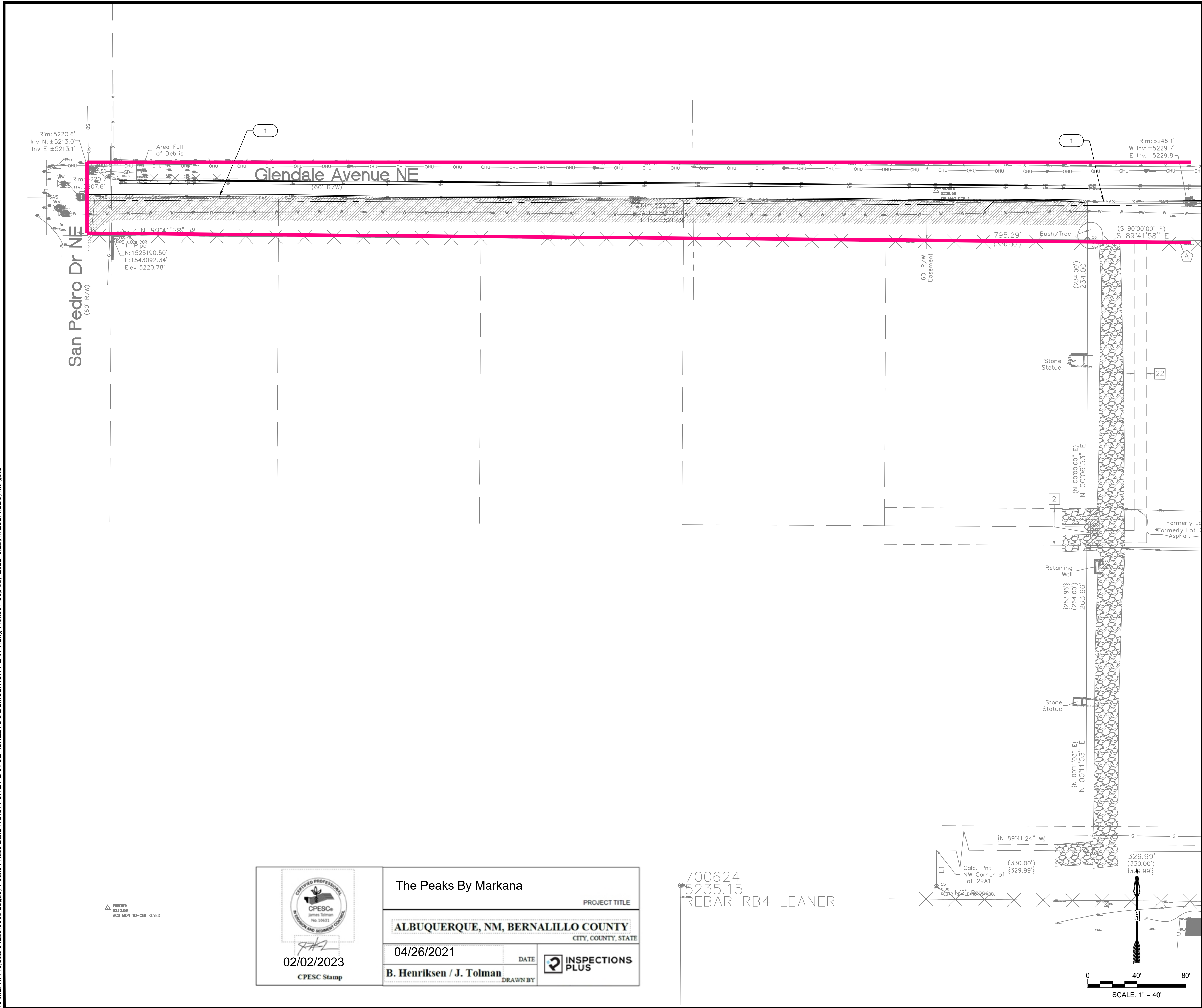
B. Henriksen / J. Tolman

DRAWN BY

INSPECTIONS PLUS



NAME: N:\Projects\04286.0006-Legacy Peaks Phase 2\3.DWG\OFFSITE PLAN SETS\SHEETS\8 DEMOLITION PLAN 1.dwg Plotted: Sep 08, 2022 3:25pm LSB: hadley.wingate



REMOVAL KEYED NOTES

I.D.#	DESCRIPTION
1	SAW-CUT EX. PAVEMENT TO ENSURE CLEAN CONNECTION OF NEW PAVEMENT
2	REMOVE AND DISPOSE CONCRETE CUT OFF WALL

NOTES:

- AT ALL PAVEMENT REMOVAL AND REPLACEMENTS, SAWCUT EDGES SHALL BE STRAIGHT AND CLEAN, AND LONGITUDINAL JOINTS SHALL NOT BE PLACED WITHIN WHEEL PATHS. PATCHES SHALL BE REGULAR AND SQUARE OR RECTANGULAR, WITH FOUR STRAIGHT SIDES. FINISHED PAVEMENT SURFACE SHALL BE FLUSH WITH EXISTING PAVEMENT SURFACE, WITH NO SPILLOVER OF ASPHALT OR TACK COAT. CARE MUST BE TAKEN TO AVOID DAMAGING THE INTEGRITY OR APPEARANCE OF SURROUNDING PAVEMENTS; IF DAMAGED, THE ENTIRE SURFACE PATCH MUST BE EXPANDED TO COVER DAMAGES.
- CONTRACTOR WILL ENSURE THE ASPHALT HAS A SMOOTH, UNIFORM EDGE WHEN REMOVING CURB AND GUTTER AND REPLACING WITH VALLEY GUTTER. IF THE ASPHALT EDGE IS NOT SMOOTH AND UNIFORM, CONTRACTOR WILL SAW-CUT AND REPLACE A ONE-FOOT STRIP OF ASPHALT ALONG THE FULL SECTION BEING REPLACED; REFER TO SHEET XX OR EXISTING PAVEMENT SECTION OR WHICH EVER IS GREATER WITH APPROPRIATE PAVING SECTION BASED ON ROADWAY CLASSIFICATION.
- REMOVAL OF EXISTING CURB & GUTTER AND SIDEWALKS SHALL BE TO THE NEAREST JOINT.
- ANY DAMAGE TO THE EXISTING CURB & GUTTER, PAVEMENT, SIDEWALKS, STRIPING, AND SIGNAGE DURING CONSTRUCTION SHALL BE REPLACED.
- OVERNIGHT PARKING OF CONSTRUCTION EQUIPMENT SHALL NOT OBSTRUCT DRIVEWAYS OR DESIGNATED TRAFFIC LANES. THE CONTRACTOR SHALL NOT STORE ANY EQUIPMENT OR MATERIAL WITHIN THE PUBLIC RIGHT-OF-WAY.
- CONTRACTOR TO COORDINATE DEMOLITION WITH SITE CONSTRUCTION ACTIVITIES AND LIMIT ACCESS RESTRICTIONS FOR BUSINESSES OPERATIONS ON-SITE AS NEEDED.

LEGEND

	VALLEY GUTTER REMOVAL
	ASPHALT REMOVAL
	V-ASPHALT
	V-ASPHALT-DEMO
	V-ASPHALT-EDGE
	V-CABLE-TOPO
	V-CONC
	V-CONC-DEMO
	V-ELEC-TOPO
	V-FENCE
	V-FENCE-DEMO
	V-GAS-TOPO
	V-GAS-TOPO-DEMO
	V-SD-TOPO
	V-SD-TOPO-DEMO
	V-WATER-TOPO
	V-WATER-TOPO-DEMO

RESPEC

COMMUNITY DESIGN SOLUTIONS
7770 JEFFERSON STREET SUITE 200
ALBUQUERQUE, NEW MEXICO 87109
WWW.RESPEC.COM PHONE: (505)253-9718

CITY OF ALBUQUERQUE
DEPARTMENT OF MUNICIPAL DEVELOPMENT
ENGINEERING DIVISION

THE PEAKS PHASE 2
DEMOLITION PLAN 1

Design Review Committee	City Engineer Approval	Last Design Update	Mo./Day/Yr.	Mo./Day/Yr.

Project No.	Zone Map No.	Sheet	of
-	B-18-Z	8	19

02/02/2023
CPESC Stamp

The Peaks By Markana

ALBUQUERQUE, NM, BERNALILLO COUNTY

04/26/2021

B. Henriksen / J. Tolman

PROJECT TITLE

CITY, COUNTY, STATE

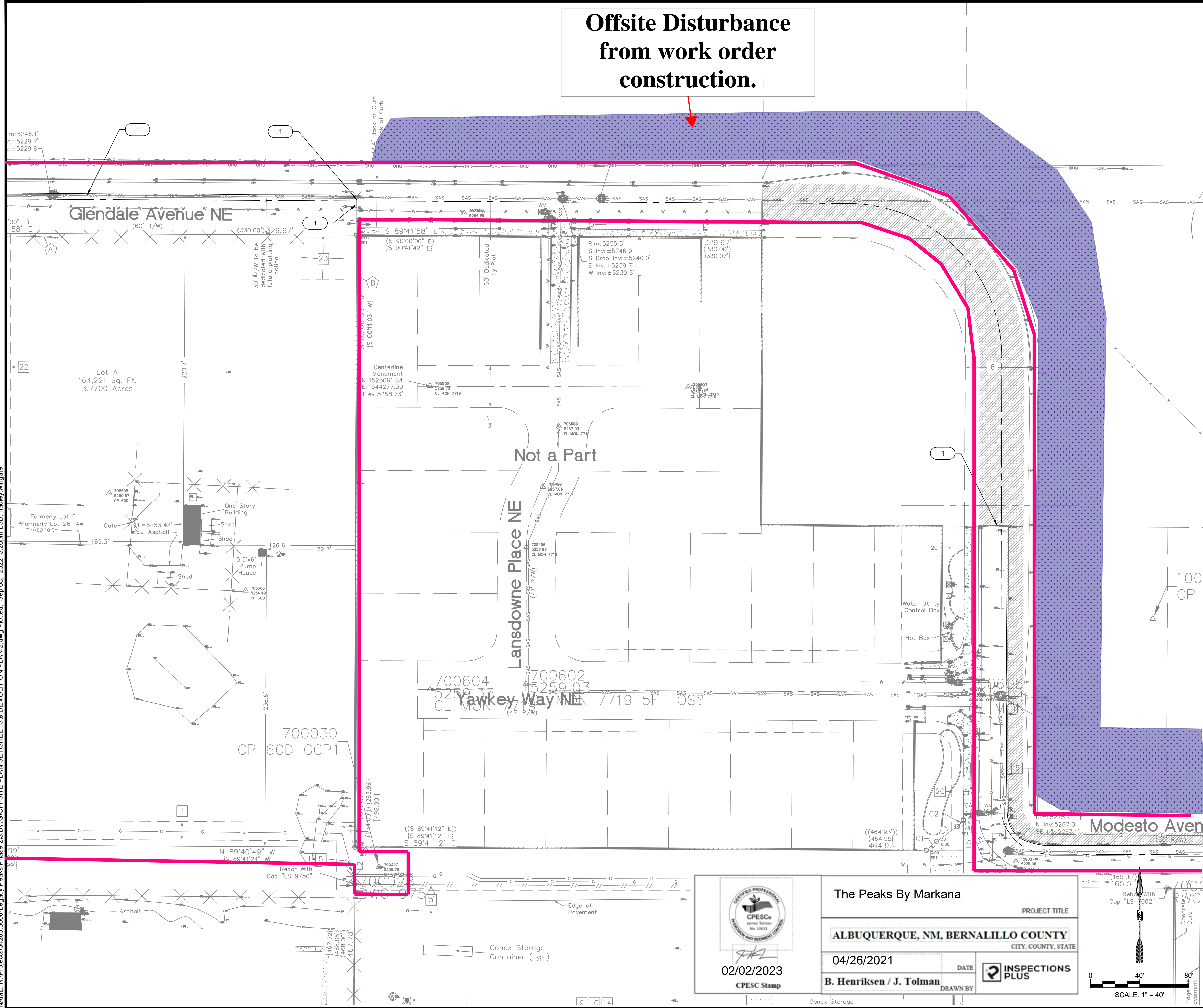
DATE

DRAWN BY

INSPECTIONS PLUS

700624
5235.15
REBAR RB4 LEANER

NAME: N:\Projects\04266.0006\Legacy Peaks Phase 2\DWG\OFFSITE PLAN SETS\PEAKS19 DEMOLITION PLAN 2.dwg Plotted: Sep 08, 2022 3:26pm LSB: hadley.wingate



Offsite Disturbance
from work order
construction.

REMOVAL KEYED NOTES

I.D.#	DESCRIPTION
1	SAW-CUT EX. PAVEMENT TO ENSURE CLEAN CONNECTION OF NEW PAVEMENT
2	REMOVE AND DISPOSE CONCRETE CUT OFF WALL

NOTES:

- AT ALL PAVEMENT REMOVAL AND REPLACEMENTS, SAWCUT EDGES SHALL BE STRAIGHT AND CLEAN, AND LONGITUDINAL JOINTS SHALL NOT BE PLACED WITHIN WHEEL PATHS. PATCHES SHALL BE REGULAR AND SQUARE OR RECTANGULAR, WITH FOUR STRAIGHT SIDES. FINISHED PAVEMENT SURFACE SHALL BE FLUSH WITH EXISTING PAVEMENT SURFACE, WITH NO SPILLOVER OF ASPHALT OR TACK COAT. CARE MUST BE TAKEN TO AVOID DAMAGING THE INTEGRITY OR APPEARANCE OF SURROUNDING PAVEMENTS; IF DAMAGED, THE ENTIRE SURFACE PATCH MUST BE EXPANDED TO COVER DAMAGES.
- CONTRACTOR WILL ENSURE THE ASPHALT HAS A SMOOTH, UNIFORM EDGE WHEN REMOVING CURB AND GUTTER AND REPLACING WITH VALLEY GUTTER. IF THE ASPHALT EDGE IS NOT SMOOTH AND UNIFORM, CONTRACTOR WILL SAW-CUT AND REPLACE A ONE-FOOT STRIP OF ASPHALT ALONG THE FULL SECTION BEING REPLACED; REFER TO SHEET XX OR EXISTING PAVEMENT SECTION OR WHICH EVER IS GREATER WITH APPROPRIATE PAVING SECTION BASED ON ROADWAY CLASSIFICATION.
- REMOVAL OF EXISTING CURB & GUTTER AND SIDEWALKS SHALL BE TO THE NEAREST JOINT.
- ANY DAMAGE TO THE EXISTING CURB & GUTTER, PAVEMENT, SIDEWALKS, STRIPING, AND SIGNAGE DURING CONSTRUCTION SHALL BE REPLACED.
- OVERNIGHT PARKING OF CONSTRUCTION EQUIPMENT SHALL NOT OBSTRUCT DRIVEWAYS OR DESIGNATED TRAFFIC LANES. THE CONTRACTOR SHALL NOT STORE ANY EQUIPMENT OR MATERIAL WITHIN THE PUBLIC RIGHT-OF-WAY.
- CONTRACTOR TO COORDINATE DEMOLITION WITH SITE CONSTRUCTION ACTIVITIES AND LIMIT ACCESS RESTRICTIONS FOR BUSINESSES OPERATIONS ON-SITE AS NEEDED.

LEGEND

	VALLEY GUTTER REMOVAL
	ASPHALT REMOVAL
	V-ASPHALT
	V-ASPHALT-DEMO
	V-ASPHALT-EDGE
	V-CABLE-TOPO
	V-CONC
	V-CONC-DEMO
	V-ELEC-TOPO
	V-FENCE
	V-FENCE-DEMO
	V-GAS-TOPO
	V-GAS-TOPO-DEMO
	V-SD-TOPO
	V-WATER-TOPO
	V-WATER-TOPO-DEMO

AS BUILT INFORMATION

CONTRACTOR	DATE
ALBUQUERQUE CONTROL SURVEY <td></td>	

INSPECTOR	DATE
MONUMENT "10. CIP NEW MEXICO STATE	

FIELD	DATE
PLANE COORDINATES (CENTRAL ZONE -	

DATE
NAD 83)

DATE
NORTH= 1,524,123.885

DATE
EAST= 1,542,565.263

DATE
MAPPING ANGLE= 0°11'19.43"

DATE
GROUND TO GRID FACTOR= 0.9985042

DATE
ELEVATION= 5222.09'

ENGINEER'S SEAL

XXXXXXX

REVISIONS

NO.	DATE	REMARKS	BY

RESPEC

COMMUNITY DESIGN SOLUTIONS

7770 JEFFERSON STREET SUITE 200

ALBUQUERQUE, NEW MEXICO 87109

WWW.RESPEC.COM PHONE: (505)253-9718

CITY OF ALBUQUERQUE

DEPARTMENT OF MUNICIPAL DEVELOPMENT

ENGINEERING DIVISION

THE PEAKS PHASE 2

DEMOLITION PLAN 2

Design Review Committee

City Engineer Approval

Project No.

Zone Map No.

Sheet

9 of 19

02/02/2023

CPESC Stamp

04/26/2021

B. Henriksen / J. Tolman

DATE

INSPECTIONS PLUS

DRAWN BY

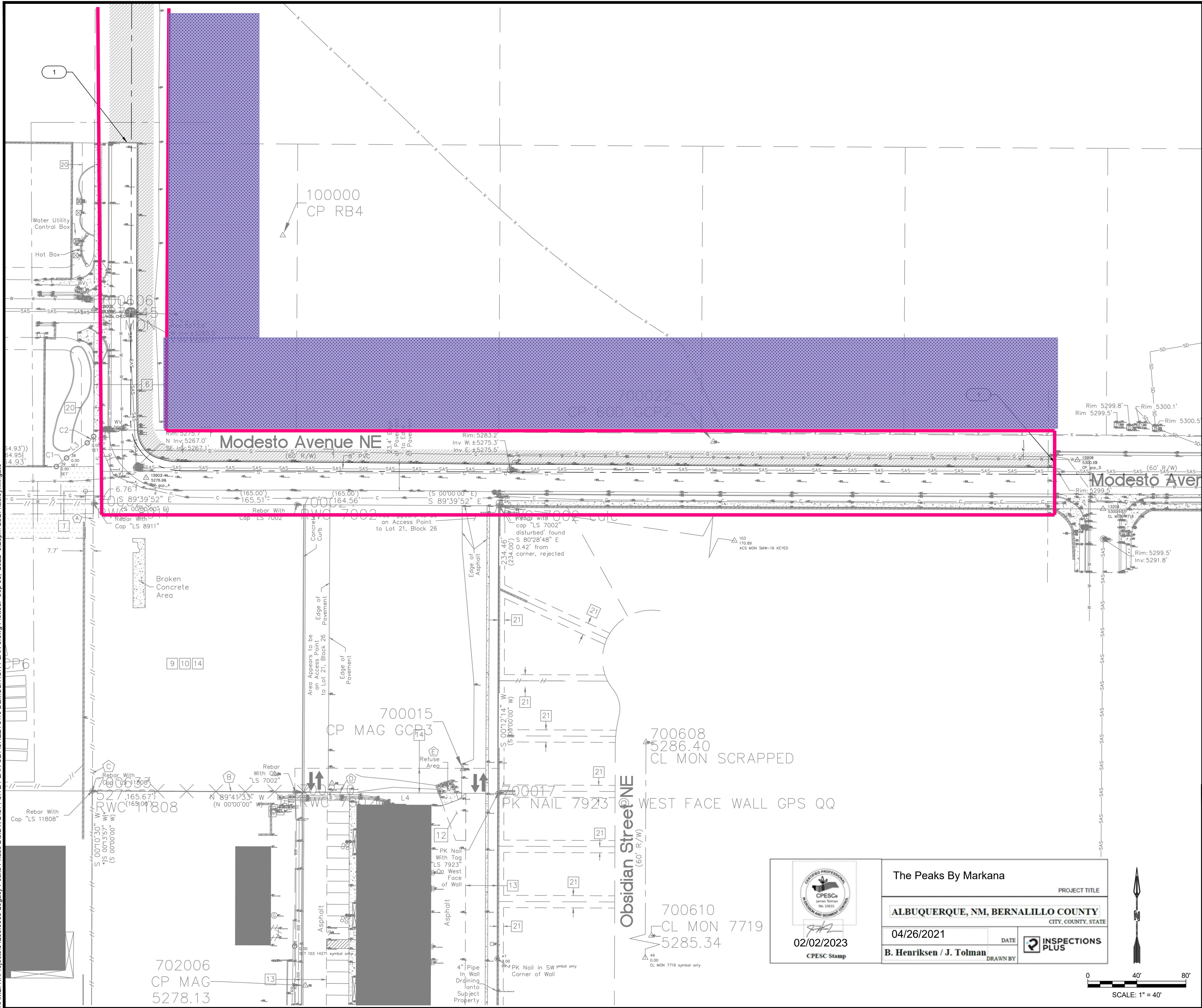
0

40'

80'

SCALE: 1" = 40'

NAME: N:\Projects\04266.0006.Legacy Peaks Phase 2\3 DWG\OFFSITE PLAN SETS\PEAKS\10 DEMOLITION PLAN 3.dwg Plotted: Sep 08, 2022 3:26pm LSB: hadley.wingate



REMOVAL KEYED NOTES

I.D.#	DESCRIPTION
1	SAW-CUT EX. PAVEMENT TO ENSURE CLEAN CONNECTION OF NEW PAVEMENT
2	REMOVE AND DISPOSE CONCRETE CUT OFF WALL

NOTES:

- AT ALL PAVEMENT REMOVAL AND REPLACEMENTS, SAWCUT EDGES SHALL BE STRAIGHT AND CLEAN, AND LONGITUDINAL JOINTS SHALL NOT BE PLACED WITHIN WHEEL PATHS. PATCHES SHALL BE REGULAR AND SQUARE OR RECTANGULAR, WITH FOUR STRAIGHT SIDES. FINISHED PAVEMENT SURFACE SHALL BE FLUSH WITH EXISTING PAVEMENT SURFACE, WITH NO SPILLOVER OF ASPHALT OR TACK COAT. CARE MUST BE TAKEN TO AVOID DAMAGING THE INTEGRITY OR APPEARANCE OF SURROUNDING PAVEMENTS; IF DAMAGED, THE ENTIRE SURFACE PATCH MUST BE EXPANDED TO COVER DAMAGES.
- CONTRACTOR WILL ENSURE THE ASPHALT HAS A SMOOTH, UNIFORM EDGE WHEN REMOVING CURB AND GUTTER AND REPLACING WITH VALLEY GUTTER. IF THE ASPHALT EDGE IS NOT SMOOTH AND UNIFORM, CONTRACTOR WILL SAW-CUT AND REPLACE A ONE-FOOT STRIP OF ASPHALT ALONG THE FULL SECTION BEING REPLACED; REFER TO SHEET XX OR EXISTING PAVEMENT SECTION OR WHICH EVER IS GREATER WITH APPROPRIATE PAVING SECTION BASED ON ROADWAY CLASSIFICATION.
- REMOVAL OF EXISTING CURB & GUTTER AND SIDEWALKS SHALL BE TO THE NEAREST JOINT.
- ANY DAMAGE TO THE EXISTING CURB & GUTTER, PAVEMENT, SIDEWALKS, STRIPING, AND SIGNAGE DURING CONSTRUCTION SHALL BE REPLACED.
- OVERNIGHT PARKING OF CONSTRUCTION EQUIPMENT SHALL NOT OBSTRUCT DRIVEWAYS OR DESIGNATED TRAFFIC LANES. THE CONTRACTOR SHALL NOT STORE ANY EQUIPMENT OR MATERIAL WITHIN THE PUBLIC RIGHT-OF-WAY.
- CONTRACTOR TO COORDINATE DEMOLITION WITH SITE CONSTRUCTION ACTIVITIES AND LIMIT ACCESS RESTRICTIONS FOR BUSINESSES OPERATIONS ON-SITE AS NEEDED.

LEGEND

	VALLEY GUTTER REMOVAL
	ASPHALT REMOVAL
	V-ASPHALT
	V-ASPHALT-DEMO
	V-ASPHALT-EDGE
	V-CABLE-TOPO
	V-CONC
	V-CONC-DEMO
	V-ELEC-TOPO
	V-FENCE
	V-FENCE-DEMO
	V-GAS-TOPO
	V-GAS-TOPO-DEMO
	V-SD-TOPO
	V-WATER-TOPO
	V-WATER-TOPO-DEMO

RESPEC

COMMUNITY DESIGN SOLUTIONS

7770 JEFFERSON STREET SUITE 200

ALBUQUERQUE, NEW MEXICO 87109

WWW.RESPEC.COM PHONE: (505)253-9718

CITY OF ALBUQUERQUE

DEPARTMENT OF MUNICIPAL DEVELOPMENT

ENGINEERING DIVISION

THE PEAKS PHASE 2

DEMOLITION PLAN 3

Design Review Committee

City Engineer Approval

Last Design Update

Project No.

Zone Map No.

Sheet

10 of 19

AS BUILT INFORMATION

CONTRACTOR	DATE
ALBUQUERQUE CONTROL SURVEY	

BENCHMARKS

MONUMENT	DATE
"10. C18" NEW MEXICO STATE	

SURVEY INFORMATION

FIELD NOTES	DATE
NO.	BY

ENGINEER'S SEAL

ALBUQUERQUE CONTROL SURVEY

MONUMENT "10. C18" NEW MEXICO STATE

REMARKS

REVISIONS

RESPEC DESIGN

DESIGNED BY: RESPEC

DRAWN BY: RESPEC

CHECKED BY: JSHF

DATE: Sep 2022

DATE: Sep 2022

DATE: Sep 2022

NO. DATE

BY

REMARKS

REVISIONS

RESPEC DESIGN

DESIGNED BY: RESPEC

DRAWN BY: RESPEC

CHECKED BY: JSHF

DATE: Sep 2022

DATE: Sep 2022

DATE: Sep 2022

