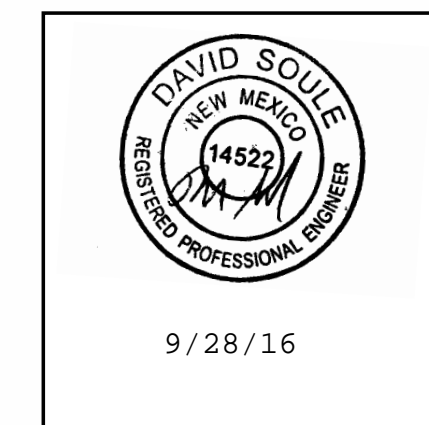


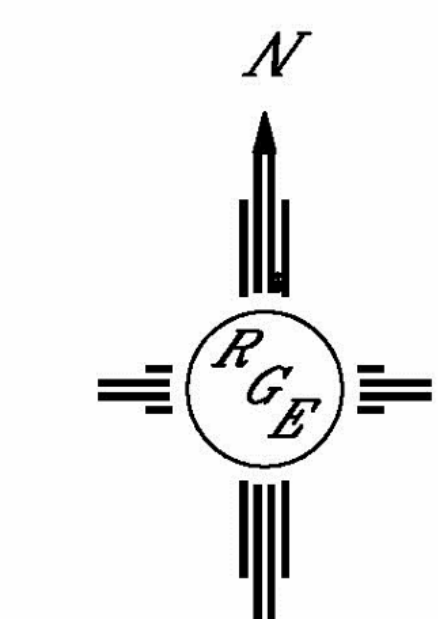
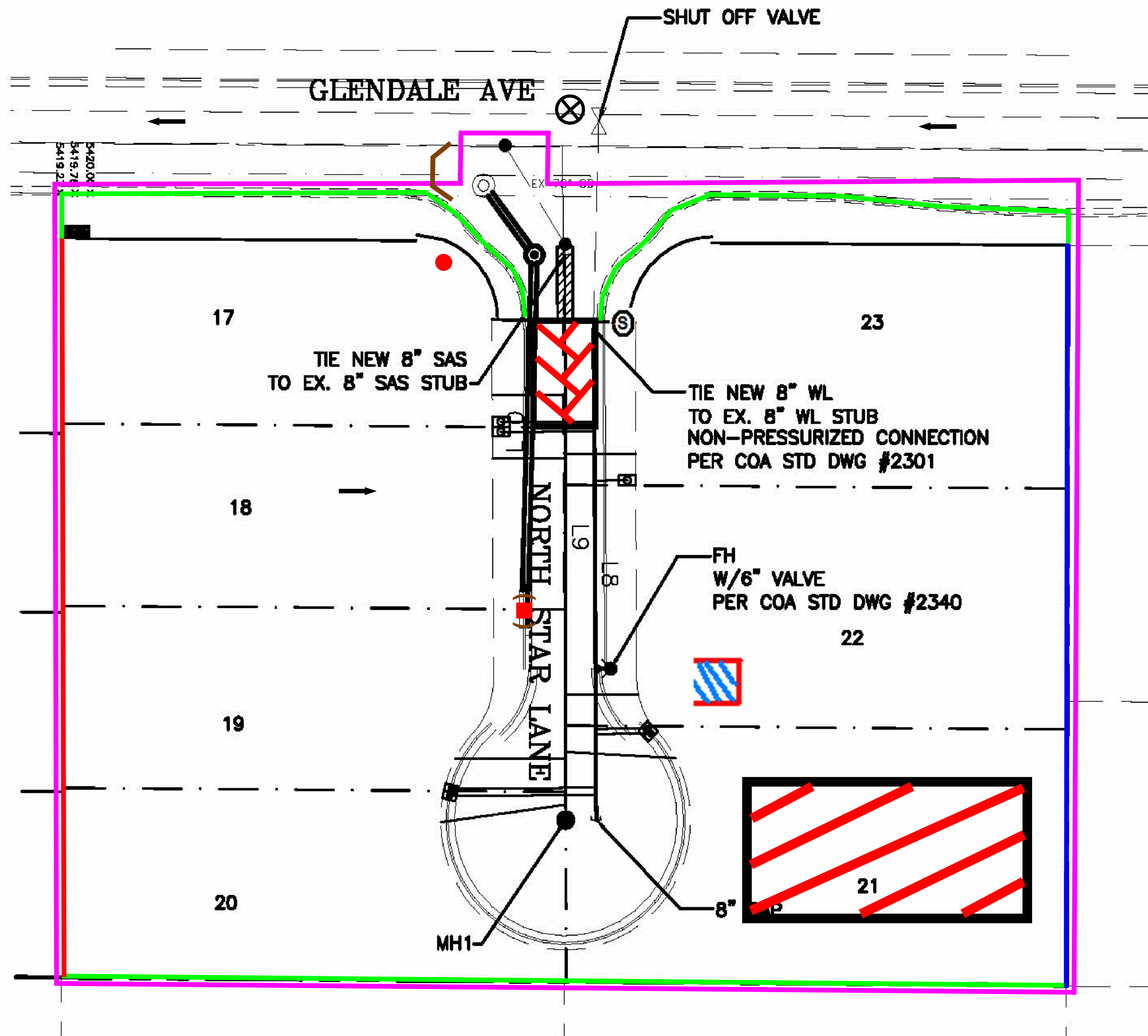


Inspections Plus, Inc.

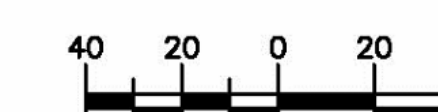
Engineer Stamp



- Note:
- When doing work in the City ROW (sidewalk, storm drain, drive pads) avoid dirt from getting into the street. If dirt is present in the street, the street should be swept every few days or the same day if rain is imminent.
 - If stock piling dirt in the street and rain is forecasted, place wattles along the down slope side of the pile.



GRAPHIC SCALE



Legend

Erosion Sediment Control Plan

- Project Perimeter & Disturbed Area
- Silt Fence
- Pre Flow & Post Flow
- Outfall
- Posting Sign
- Staging Area
- Stabilized Construction Entrance
- Trash Receptacle
- Chemical Toilet
- Concrete Washout
- Inlet Protection
- Retaining Wall
- Wattle
- Block Wall

Glendale Estates Phase III

Receiving Waters and Critical Habitat: Rio Grande is located 5.3 miles to the West

Impairments: E. coli, Dissolved Oxygen, PCBs in Fish Tissue, Water Temperature