

CITY OF ALBUQUERQUE



October 26, 2006

Mr. Steve Salazar, PE
WILSON & COMPANY
2600 The American Road SE, Suite 100
Rio Rancho, NM 87124

RE: SANTA FE 2 AT THE TRAILS, UNIT 2 – TRACT 6 (C-9/D6)
Engineers Certification for Release of Financial Guaranty
Engineers Stamp dated 07/07/2005
Engineers Certification dated 10/25/2006

Dear Steve:

Based upon the information provided in your Engineer's Certification Submittal dated 10/25/2006, the above referenced plan is adequate to satisfy the Grading and Drainage Certification for Release of Financial Guaranty.

P.O. Box 1293

If you have any questions, you can contact me at 924-3982

Albuquerque

Sincerely,

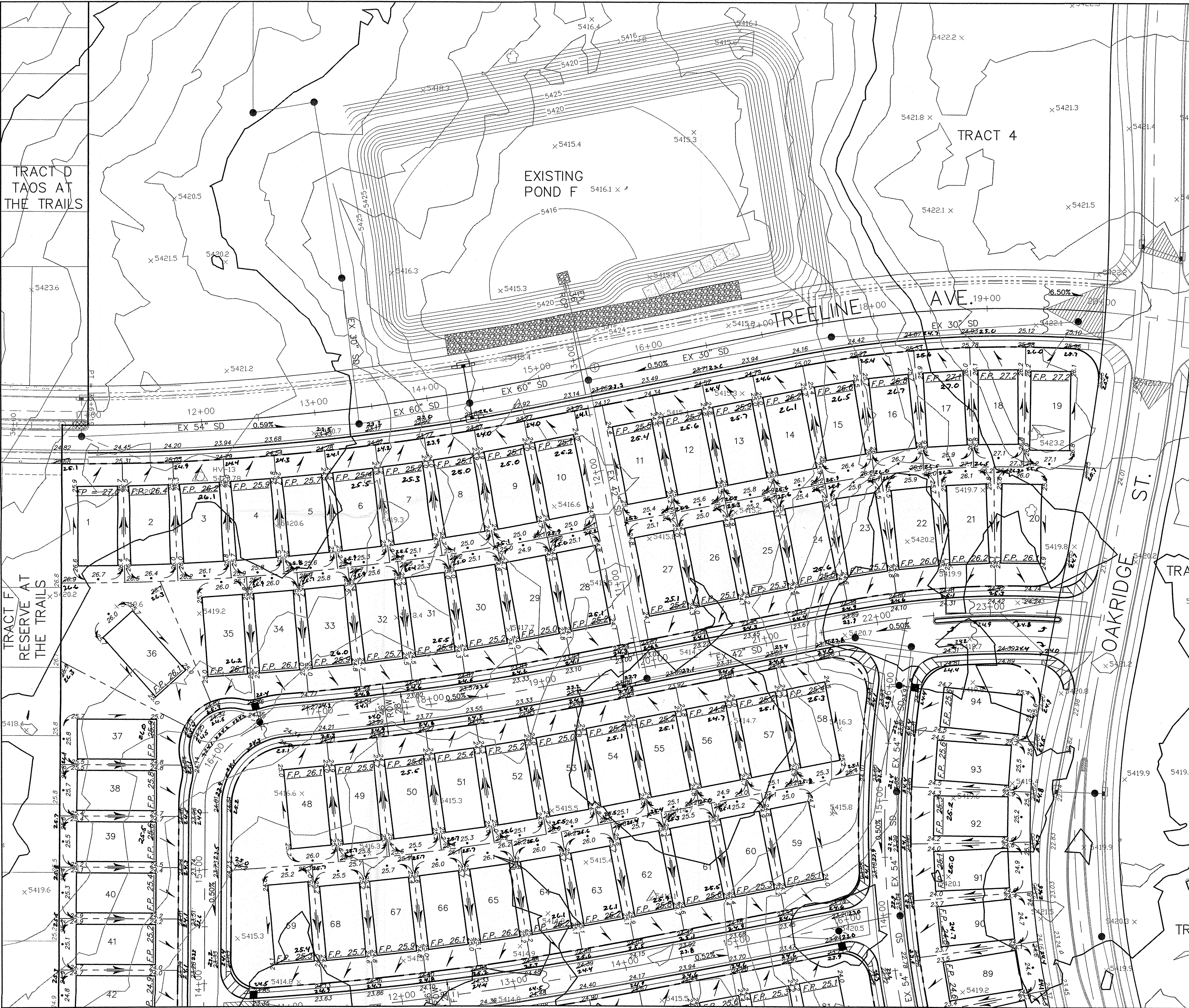
Arlene V. Portillo

New Mexico 87103

Arlene V. Portillo
Plan Checker, Planning Dept.- Hydrology
Development and Building Services

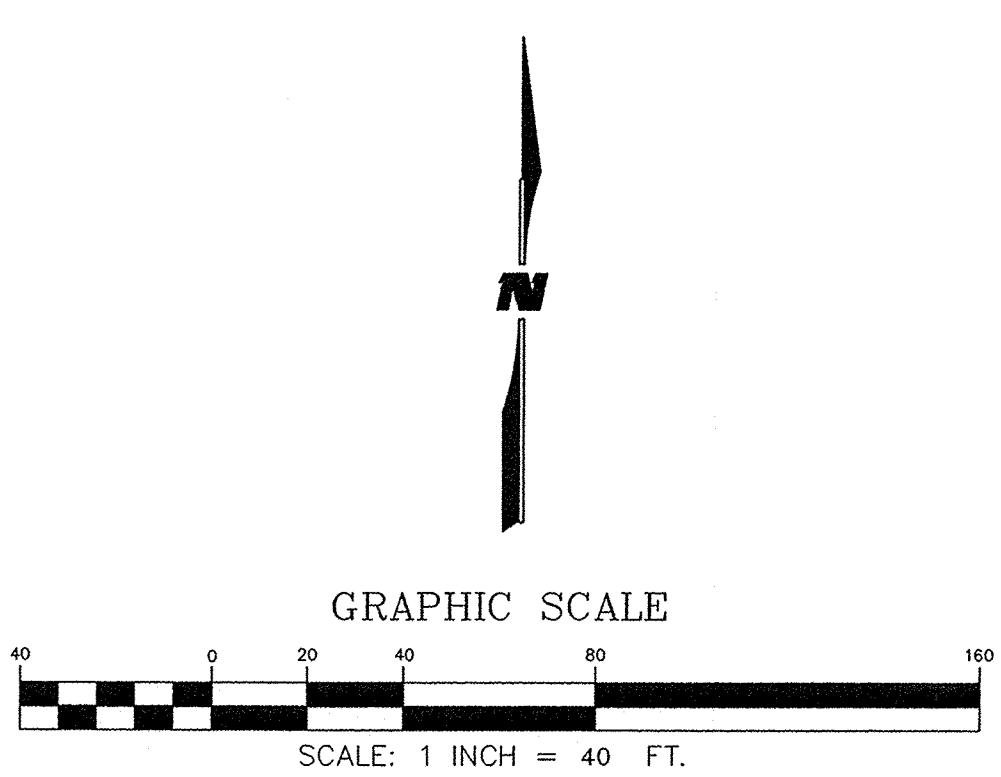
www.cabq.gov

C: Marilyn Maldonado, COA# 730085
File



LEGEND

- RETAINING WALL
- HIGH POINT
- DIRECTION OF FLOW
- LINE ELEVATION
- BASIN BOUNDARY
- TYPE DOUBLE C INLET
- RETAINING WALL POINT



DRAINAGE CERT W/ SURVEY WORK BY OTHERS
12/28/01

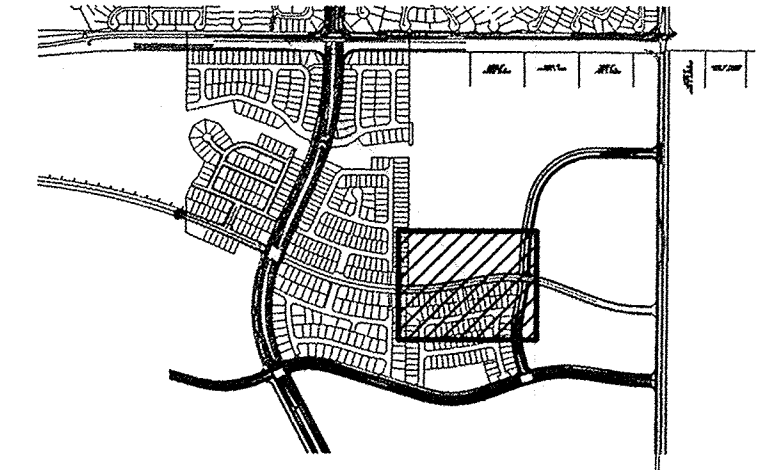
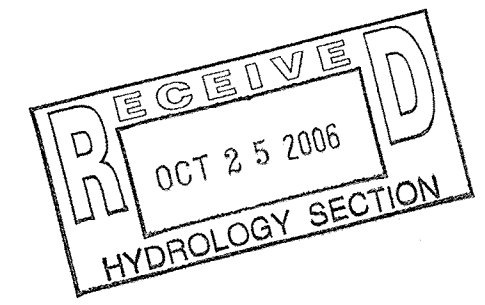
DRAINAGE CERTIFICATION

I, Steve J. Salazar, NMPE 16241, of the firm, Wilson & Company, Inc., HEREBY CERTIFY THAT THIS PROJECT HAS BEEN GRADED AND WILL DRAIN IN SUBSTANTIAL COMPLIANCE WITH AND IN ACCORDANCE WITH THE DESIGN INTENT OF THE APPROVED PLAN DATED 7-7-05. THE RECORD INFORMATION EDITED ONTO THE ORIGINAL DESIGN DOCUMENT HAS BEEN OBTAINED BY Russ P. Hugg, NMPS 9750, OF THE FIRM, Suretek.

I FURTHER CERTIFY THAT I HAVE PERSONALLY VISITED THE PROJECT SITE ON October 20, 2006 AND HAVE DETERMINED BY VISUAL INSPECTION THAT THE SURVEY DATA PROVIDED IS REPRESENTATIVE OF ACTUAL SITE CONDITIONS AND IS TRUE AND CORRECT TO THE BEST OF MY KNOWLEDGE AND BELIEF. THIS CERTIFICATION IS SUBMITTED IN SUPPORT OF A REQUEST FOR PERMANENT CERTIFICATE OF OCCUPANCY.

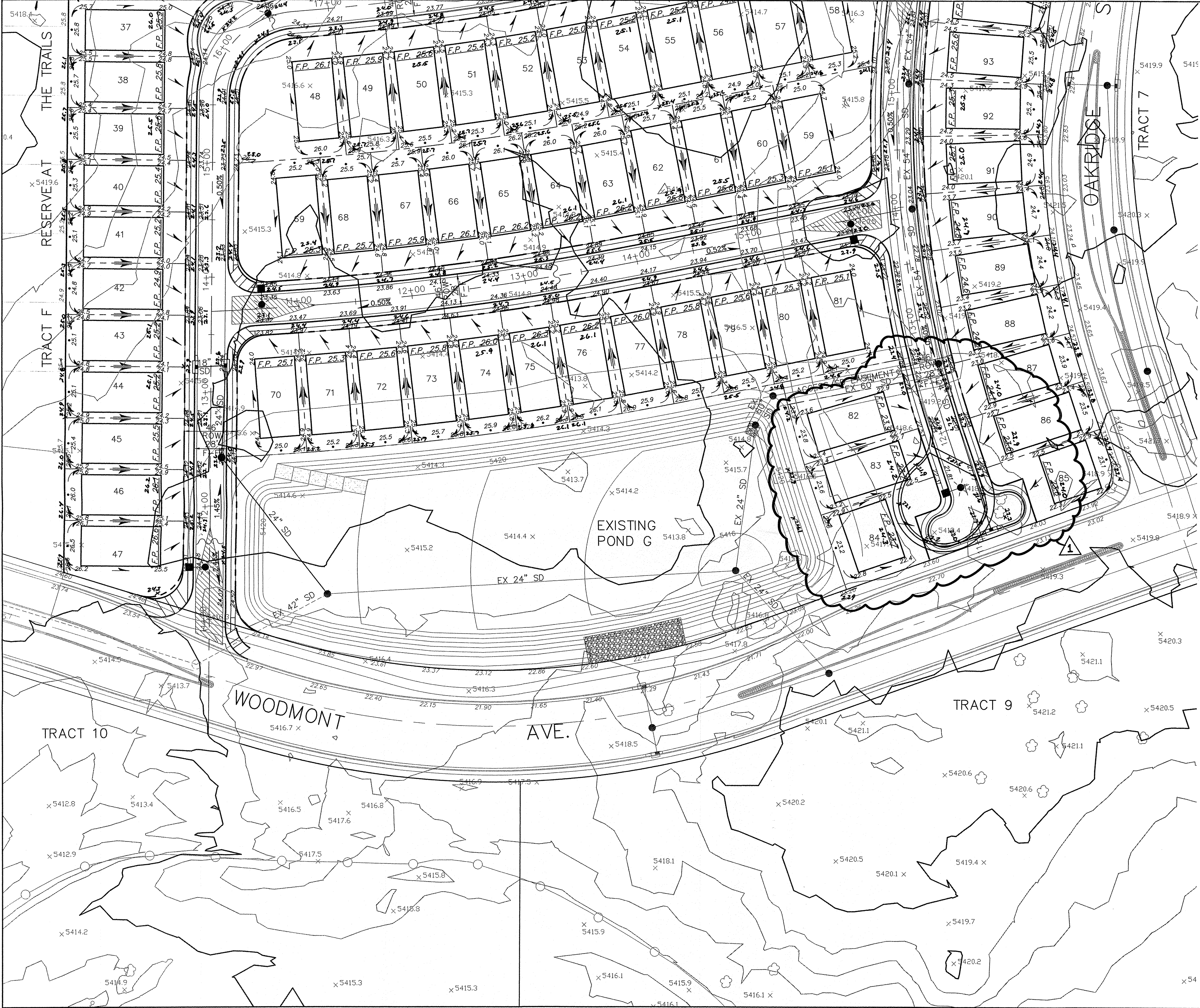
THE RECORD INFORMATION PRESENTED HEREON IS NOT NECESSARILY COMPLETE AND INTENDED ONLY TO VERIFY SUBSTANTIAL COMPLIANCE OF THE GRADING AND DRAINAGE ASPECTS OF THIS PROJECT. THOSE RELYING ON THIS RECORD DOCUMENT ARE ADVISED TO OBTAIN INDEPENDENT VERIFICATION OF ITS ACCURACY BEFORE USING IT FOR ANY OTHER PURPOSE.

Steve J. Salazar, NMPE 16241
DATE 10/25/06

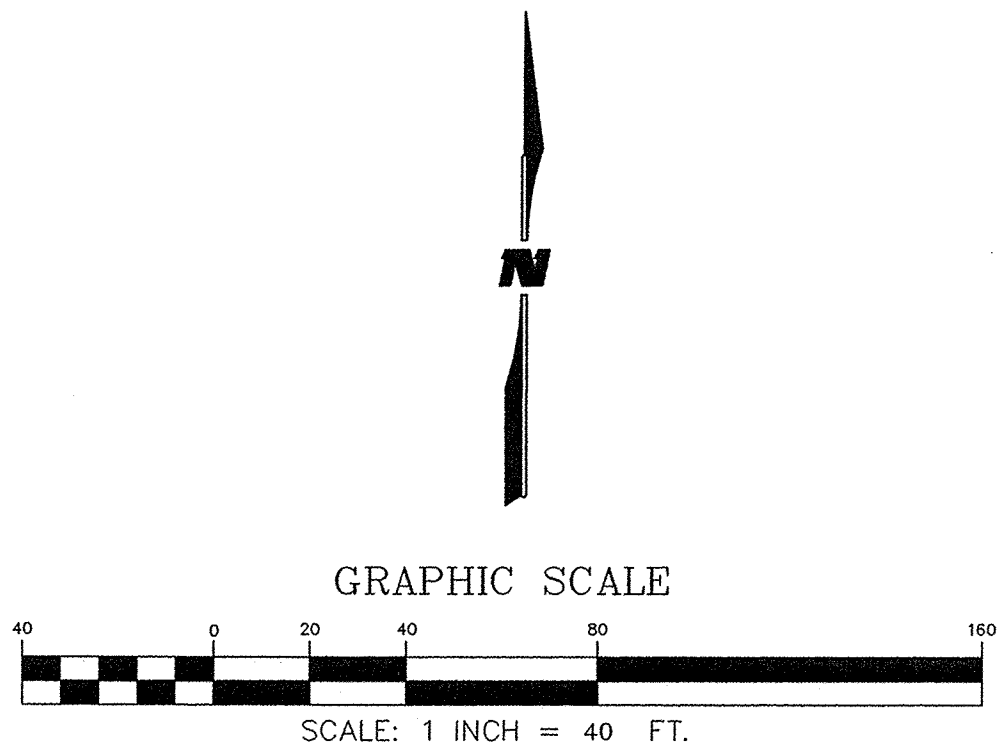


WILSON & COMPANY
2600 THE AMERICAN ROAD S.E.
SUITE 100
RIO RANCHO, NEW MEXICO 87124
(505) 898-8021

CITY OF ALBUQUERQUE PUBLIC WORKS DEPARTMENT ENGINEERING GROUP	
TRACT 6 OF THE TRAILS UNIT II GRADING & DRAINAGE PLAN	
Design Review Committee	City Engineer Approval
City Project No.	Zone Map No.
Last Design Update	
Mo./Day/Yr.	Mo./Day/Yr.
Sheet	Of
C-9-Z	
PLATE 3A	



- LEGEND**
- RETAINING WALL
 - HIGH POINT
 - DIRECTION OF FLOW
 - LINE ELEVATION
 - BASIN BOUNDARY
 - TYPE DOUBLE C INLET
 - RETAINING WALL POINT

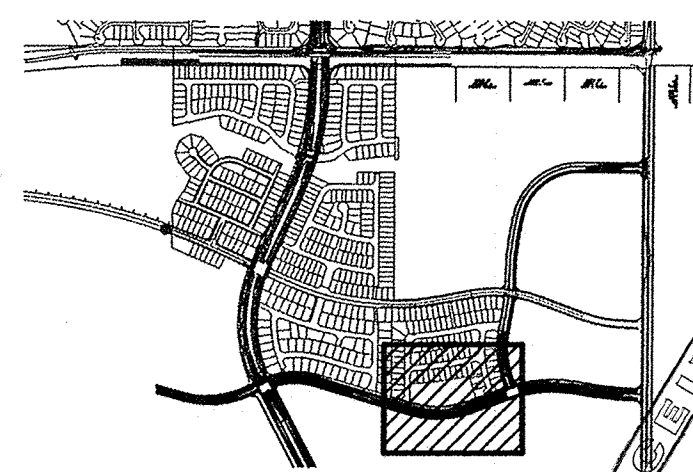


DRAINAGE CERT W/ SURVEY WORK BY OTHERS
12/28/01

DRAINAGE CERTIFICATION
I, Steve J. Salazar, NMPE 16241, OF THE FIRM Wilson & Company, Inc.,
HEREBY CERTIFY THAT THIS PROJECT HAS BEEN GRADED AND WILL DRAIN IN
SUBSTANTIAL COMPLIANCE WITH AND IN ACCORDANCE WITH THE DESIGN INTENT OF
THE APPROVED PLAN DATED 7-7-03. THE RECORD INFORMATION EDITED ONTO
THE ORIGINAL DESIGN DOCUMENT HAS BEEN OBTAINED BY Russ P. Hugg, NMPS 9750, OF
THE FIRM Surtek.
I FURTHER CERTIFY THAT I HAVE PERSONALLY VISITED THE PROJECT SITE ON October
20, 2006 AND HAVE DETERMINED BY VISUAL INSPECTION THAT THE SURVEY DATA
PROVIDED IS REPRESENTATIVE OF ACTUAL SITE CONDITIONS AND IS TRUE AND
CORRECT TO THE BEST OF MY KNOWLEDGE AND BELIEF. THIS CERTIFICATION IS
SUBMITTED IN SUPPORT OF A REQUEST FOR PERMANENT CERTIFICATE OF OCCUPANCY.

THE RECORD INFORMATION PRESENTED HEREON IS NOT NECESSARILY COMPLETE AND
INTENDED ONLY TO VERIFY SUBSTANTIAL COMPLIANCE OF THE GRADING AND
DRAINAGE ASPECTS OF THIS PROJECT. THOSE RELYING ON THIS RECORD DOCUMENT
ARE ADVISED TO OBTAIN INDEPENDENT VERIFICATION OF ITS ACCURACY BEFORE USING
IT FOR ANY OTHER PURPOSE.

Steve J. Salazar, NMPE 16241
DATE 10/25/06



WILSON & COMPANY

2600 THE CANYON ROAD S.E.
RIO RANCHO, NEW MEXICO
87124
(505) 898-8021

CITY OF ALBUQUERQUE PUBLIC WORKS DEPARTMENT ENGINEERING GROUP			
TRACT 6 OF THE TRAILS UNIT II GRADING & DRAINAGE PLAN			
Design Review Committee	City Engineer Approval	Last Design Update	
City Project No.	Zone Map No.	Sheet	Of
	C-9-Z	PLATE 3B	

BENCH MARKS		AS-BUILT INFORMATION	
ACS BRASS TABLE	STAMPED "2-B10 1980"	CONTRACTOR	DATE
Geographic Position (NAD 1927)		INSPECTOR'S	DATE
N.M. State Plane Coordinates (Central Zone)		FIELD TIME BY	DATE
X= 357,543.73 Y= 1,527,976.48		CERTIFICATION BY	DATE
Ground-to-Grid Factor = 0.99966354		COMPILED BY	DATE
ACQ = -00'16"30"		RECORDED BY	DATE
SLD 1929 Elevation = 5429.35		NO.	
SURVEY INFORMATION		ENGINEER'S SEAL	
FIELD NOTES	DATE		
BY			
NO.			
REVISIONS		NO. DATE	
FIELD REVISION DUE TO DRC APPL		BY	
9-12-06		DATE	
DESIGNED BY		DATE	
DRAWN BY		DATE	
CHECKED BY		DATE	