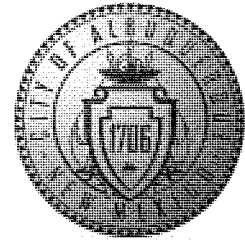


# CITY OF ALBUQUERQUE



January 19, 2010

J. Graeme Means, P.E.  
**High Mesa Consulting Group**  
6010-B Midway Park Blvd. NE  
Albuquerque, NM 87109

**Re: Tony Hillerman Middle School – APS NW, 8101 Rainbow NW,**  
**Request for Permanent C.O.—Approved**  
**Engineer's Stamp dated: 05-21-08, (C09/D010)**  
**Certification dated: 1-14-10** C

Dear Mr. Means,

Based upon the information provided in your submittal, received 1-15-10, the above referenced Certification is approved for a release of a Permanent Certificate of Occupancy by Hydrology.

PO Box 1293

If you have any questions, you can contact me at 924-3982.

Albuquerque

Sincerely,

NM 87103

Timothy E. Sims  
Plan Checker—Hydrology Section  
Development and Building Services

[www.cabq.gov](http://www.cabq.gov)

C: CO Clerk—Katrina Sigala  
File







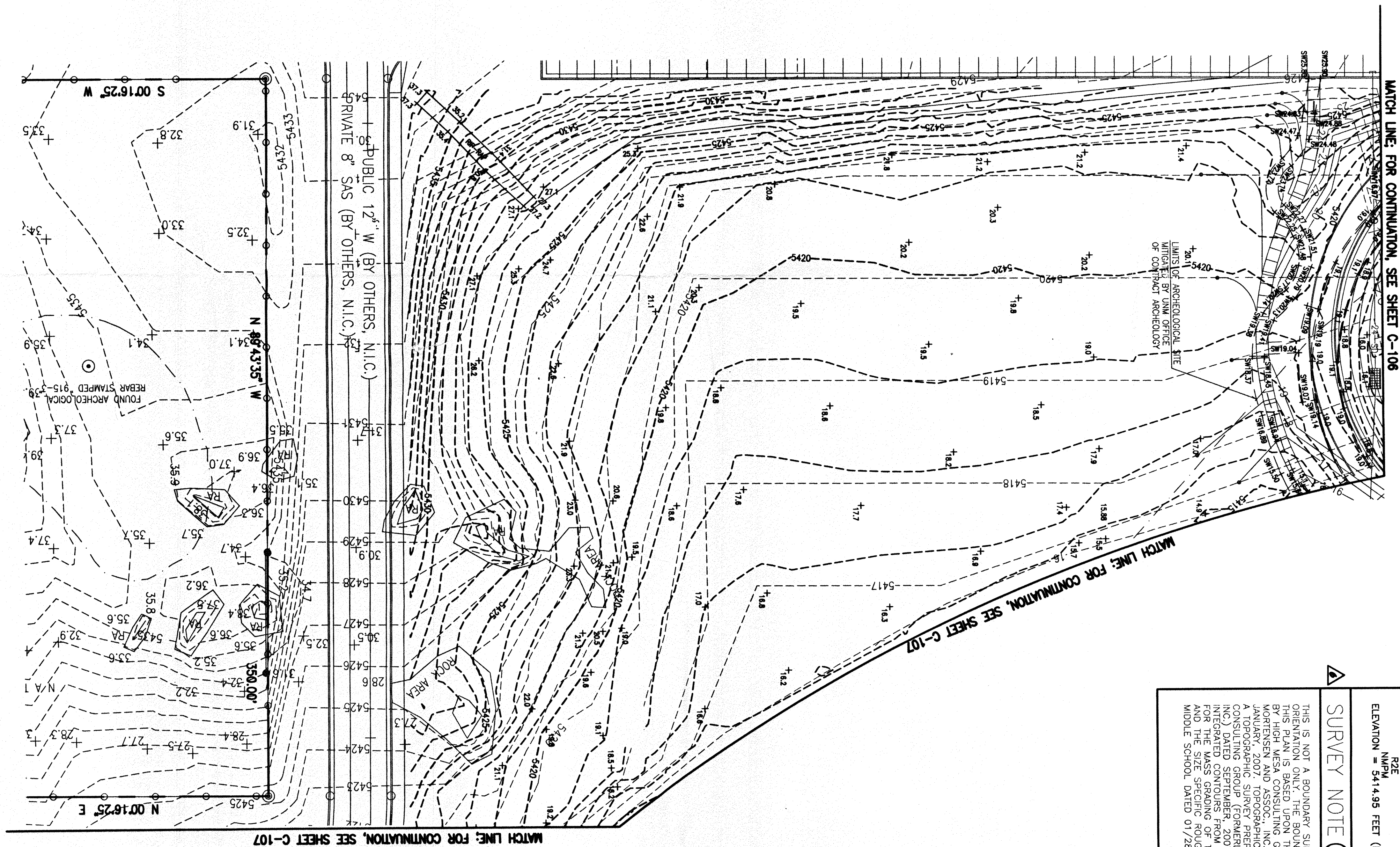








**RECORD DRAWING**  
FOR CERTIFICATION AND RECORD  
DRAWING LEGEND, SEE SHEET C-106



<p><b>LEGAL DESCRIPTION</b></p> <p>PORTION OF TRACT Q-1-1, ANCIENT MESA</p>	<p><b>BENCHMARKS</b></p>	<p><b>PROJECT BENCHMARK</b></p> <p>A BRASS CAP LOCATED NEAR THE NORTHEAST CORNER OF THE EXISTING 10' X 10' CONCRETE SLAB AT THE NORTHEAST CORNER OF THE 4" WIRE FENCE AND STAMPED: 111N 1/4 S18 S15</p> <p>N2E N12E</p> <p>ELEVATION = 5414.95 FEET (MND 1929)</p>	<p><b>SURVEY NOTE (APPLIED TO DESIGN)</b></p>	<p>THIS IS NOT A BOUNDARY SURVEY. DATA IS SHOWN FOR ORIENTATION ONLY. THE BOUNDARY INFORMATION DEPICTED BY THIS PLAN IS BASED UPON THE BOUNDARY INFORMATION PREPARED BY BATES &amp; ASSOC., INC. ON 11/18/94, DATED 11/18/94, AND BATES &amp; ASSOC., INC. ON 01/29/98, DATED 01/29/98. TOPOGRAPHIC SURVEY INFORMATION IS BASED UPON A TOPOGRAPHIC SURVEY PREPARED BY HIGH MESA AND ASSOC., INC. ON 01/29/98, DATED 01/29/98. THIS SURVEY WAS INTEGRATED CONSIDERS FROM THE ROUGH GRAVING PLAN FOR THE MASS GRADING OF TRACT Q-1-1, DATED 01/29/98, THE MIDDLE SURVEY, DATED 01/29/98.</p>
---	--------------------------	--	---	--

[illegible]

**SHEET KEYED NOTES**  
(ALL NOTES MAY NOT APPLY  
TO THIS SHEET)

7	INSTALL 30" W/1" WATER TIGHT HOPE STROM DRAIN
17	INSTALL 286 LF 1/2" WATER TIGHT HOPE STROM DRAIN
3	● S-0-00705 (Quantity = 525.075 > 0.00 = 525.075)
3	DETAIL 131 SHEET C-501
4	● S-0-00705 (Quantity = 0.00 < 0.00 = 0.00)
4	INSTALL 160 LF 3/4" WATER TIGHT HOPE STROM DRAIN
5	● S-0-00705 (Quantity = 535.075 > 0.00 = 535.075)
5	DETAIL 141 SHEET C-501
6	● S-0-00705 (Quantity = 0.00 < 0.00 = 0.00)
6	INSTALL 215 LF 1/2" WATER TIGHT HOPE STROM DRAIN
7	● S-0-00723 (Quantity = 16.000 > 0.00 = 16.000)
7	1/2" W/1" WE TO CONNECT TO HOPE STROM DRAIN
8	AT BUILDING (NW AT BLDG = 12.50)
8	CONSTRUCT 18" SQUARE STORM DRAIN INLET PER THE
9	INSTALL 169 LF 1/2" WATER TIGHT HOPE STROM DRAIN
9	● S-0-00705 (Quantity = 198.075 > 0.00 = 317.075)
10	CONSTRUCT 7/4" SQUARE STORM DRAIN INLET PER
11	INSTALL 178 LF 1/2" WATER TIGHT HOPE STROM DRAIN
11	● S-0-0131 (Quantity = 16.000 > 0.00 = 16.000)
11	INSTALL 108 LF 3/4" WATER TIGHT HOPE STROM DRAIN
12	● S-0-0131 (Quantity = 16.000 > 0.00 = 16.000)
12	INSTALL 141 LF 1/2" WATER TIGHT HOPE STROM DRAIN
13	● S-0-0110 (Quantity = 16.000 > 0.00 = 16.000)
13	INSTALL 110 LF 1/2" WATER TIGHT HOPE STROM DRAIN
14	● S-0-0110 (Quantity = 16.000 > 0.00 = 16.000)
14	INSTALL 110 LF 1/2" WATER TIGHT HOPE STROM DRAIN
15	● S-0-00233 (Quantity = 16.000 > 0.00 = 16.000)
15	CONSTRUCT 1/2" THICK POLYPROPYLENE INSIDE UPSTREAM
16	NILET PER FUTURE CONVENTION
16	● S-0-00233 (Quantity = 16.000 > 0.00 = 16.000)
16	CONSTRUCT 1/2" THICK POLYPROPYLENE INSIDE UPSTREAM
17	FOR FUTURE CONVENTION
17	● S-0-00233 (Quantity = 16.000 > 0.00 = 16.000)
17	CONSTRUCT 1/2" THICK POLYPROPYLENE INSIDE UPSTREAM
18	WE TO CONNECT TO HOPE STROM DRAIN
18	● S-0-00233 (Quantity = 16.000 > 0.00 = 16.000)
18	CONSTRUCT 1/2" THICK POLYPROPYLENE INSIDE UPSTREAM
19	● S-0-00705 (Quantity = 8.175 > 0.00 = 2.375)
19	INSTALL 110 LF 1/2" WATER TIGHT HOPE STROM DRAIN
20	● S-0-00705 (Quantity = 8.175 > 0.00 = 2.375)
20	INSTALL 110 LF 1/2" WATER TIGHT HOPE STROM DRAIN
21	● S-0-00705 (Quantity = 8.175 > 0.00 = 2.375)
21	INSTALL 110 LF 1/2" WATER TIGHT HOPE STROM DRAIN
22	CONSTRUCT 4" WIDE CURB OPENING
22	● S-0-00705 (Quantity = 8.175 > 0.00 = 2.375)
22	CONSTRUCT 4" WIDE CURB OPENING
23	CONSTRUCT 4" WIDE CURB OPENING
23	● S-0-00705 (Quantity = 8.175 > 0.00 = 2.375)
23	CONSTRUCT 4" WIDE CURB OPENING
24	CONSTRUCT 4" WIDE CURB OPENING
24	● S-0-00705 (Quantity = 8.175 > 0.00 = 2.375)
24	CONSTRUCT 4" WIDE CURB OPENING
25	INSTALL 130 LF 1/2" WATER TIGHT HOPE STROM DRAIN
25	● S-0-00705 (Quantity = 8.175 > 0.00 = 2.375)
25	INSTALL 130 LF 1/2" WATER TIGHT HOPE STROM DRAIN
26	● S-0-00705 (Quantity = 8.175 > 0.00 = 2.375)
26	INSTALL 130 LF 1/2" WATER TIGHT HOPE STROM DRAIN
27	● S-0-00705 (Quantity = 8.175 > 0.00 = 2.375)
27	INSTALL 130 LF 1/2" WATER TIGHT HOPE STROM DRAIN
28	● S-0-00705 (Quantity = 8.175 > 0.00 = 2.375)
28	INSTALL 130 LF 1/2" WATER TIGHT HOPE STROM DRAIN
29	● S-0-00705 (Quantity = 8.175 > 0.00 = 2.375)
29	INSTALL 130 LF 1/2" WATER TIGHT HOPE STROM DRAIN
30	● S-0-00705 (Quantity = 8.175 > 0.00 = 2.375)
30	INSTALL 130 LF 1/2" WATER TIGHT HOPE STROM DRAIN
31	● S-0-00705 (Quantity = 8.175 > 0.00 = 2.375)
31	INSTALL 130 LF 1/2" WATER TIGHT HOPE STROM DRAIN
32	● S-0-00705 (Quantity = 8.175 > 0.00 = 2.375)
32	INSTALL 130 LF 1/2" WATER TIGHT HOPE STROM DRAIN
33	● S-0-00705 (Quantity = 8.175 > 0.00 = 2.375)
33	INSTALL 130 LF 1/2" WATER TIGHT HOPE STROM DRAIN
34	● S-0-00705 (Quantity = 8.175 > 0.00 = 2.375)
34	INSTALL 130 LF 1/2" WATER TIGHT HOPE STROM DRAIN
35	● S-0-00705 (Quantity = 8.175 > 0.00 = 2.375)
35	INSTALL 130 LF 1/2" WATER TIGHT HOPE STROM DRAIN
36	● S-0-00705 (Quantity = 8.175 > 0.00 = 2.375)
36	INSTALL 130 LF 1/2" WATER TIGHT HOPE STROM DRAIN
37	● S-0-00705 (Quantity = 8.175 > 0.00 = 2.375)
37	INSTALL 130 LF 1/2" WATER TIGHT HOPE STROM DRAIN
38	● S-0-00705 (Quantity = 8.175 > 0.00 = 2.375)
38	INSTALL 130 LF 1/2" WATER TIGHT HOPE STROM DRAIN
39	● S-0-00705 (Quantity = 8.175 > 0.00 = 2.375)
39	INSTALL 130 LF 1/2" WATER TIGHT HOPE STROM DRAIN
40	● S-0-00705 (Quantity = 8.175 > 0.00 = 2.375)
40	INSTALL 130 LF 1/2" WATER TIGHT HOPE STROM DRAIN
41	● S-0-00705 (Quantity = 8.175 > 0.00 = 2.375)
41	INSTALL 130 LF 1/2" WATER TIGHT HOPE STROM DRAIN
42	● S-0-00705 (Quantity = 8.175 > 0.00 = 2.375)
42	INSTALL 130 LF 1/2" WATER TIGHT HOPE STROM DRAIN
43	● S-0-00705 (Quantity = 8.175 &gt

REVISIONS  
 ▽  
 ▽  
 ▽  
 ▽  
 ▽  
 JUL. 2010 ENGINEERS  
 CERT. FOR FINAL C.O.  
 NO CHANGES  
 MAY, 2008

DRAWN BY:	CFA / RRW / JYR
REVIEWED BY:	G.M. / G.R.B

PROJECT NO. P07033

DRAWING NAME

GRADING PLAN -- SOUTH

RECEIVED

JAN 15 1960

INFORMATION

## INTRODUCTION

014 3881510

SHEET NO.

C-108

OF

1