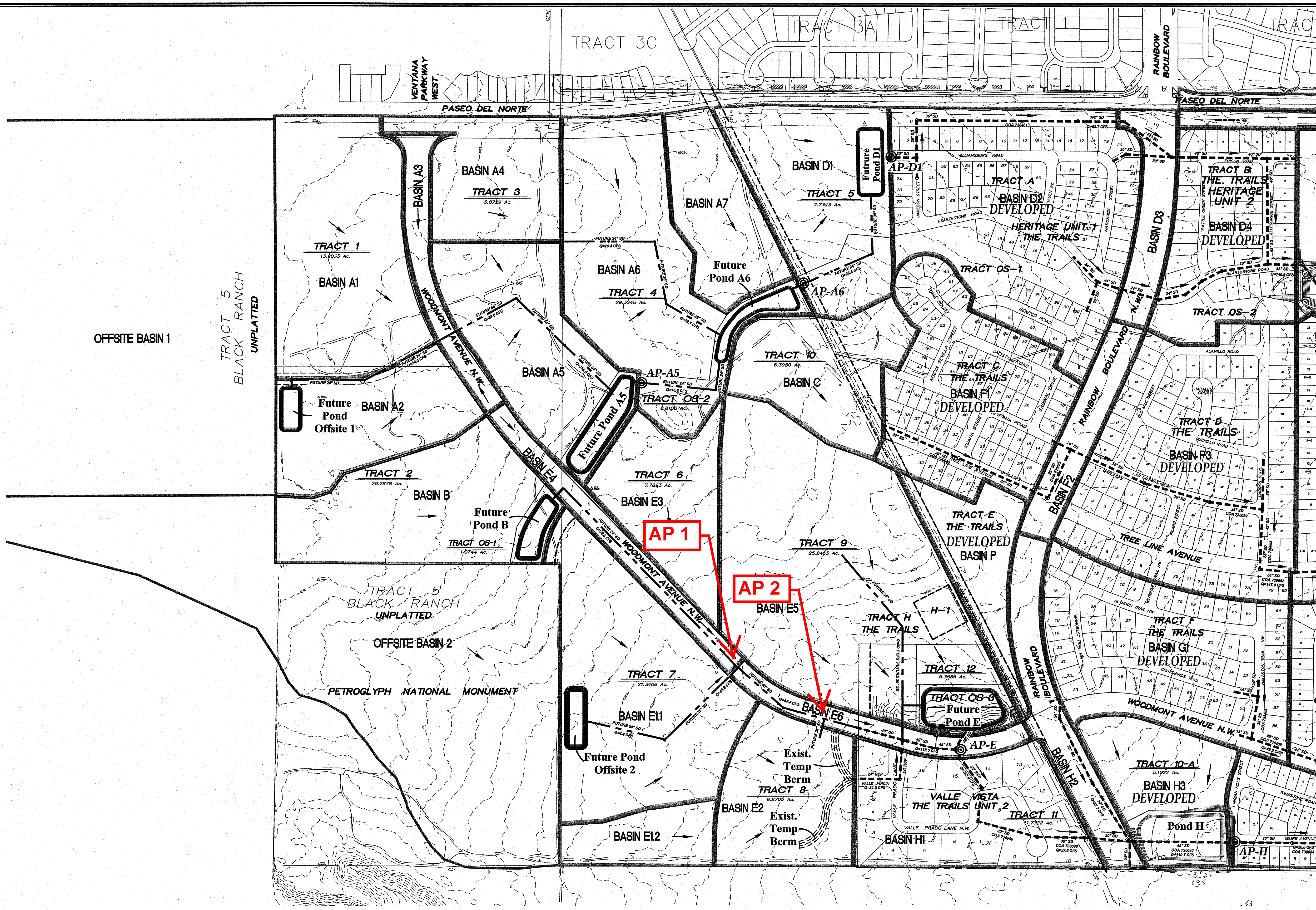


	<u>Drainage Master Plan</u>		<u>Valle Prado Drainage Report</u>	
<u>Analysis Point</u>	<u>Q (cfs)*</u>	<u>Basins</u>	<u>Q (cfs)*</u>	<u>Basins</u>
1	87.4 (ID 74)	B, E1.1, E3, E4 and Offsite Basin 2	64.5 (ID 40)	B, E1.1, E4 and Offsite Basin 2
2	118.5 (ID 78)	Flow from AP 1 and Basins E1.2 & E2	95.7 (ID 41)	Flow from AP 1 and Basins E1.2 & E2

* The Q is from the AHYMO file with the AHYMO ID from the reprinted report noted in ().

Note:
The difference between the flows from AP 1 and 2 is because Basin E3 from the DMP is routed through the subdivision in the Valle Prado Report and not through Woodmont Ave as depicted in the DMP.



OFFSITE BASIN 1

TRACT 5
BLACK RANCH
UNPLATTED

Future
Pond
Offsite 1

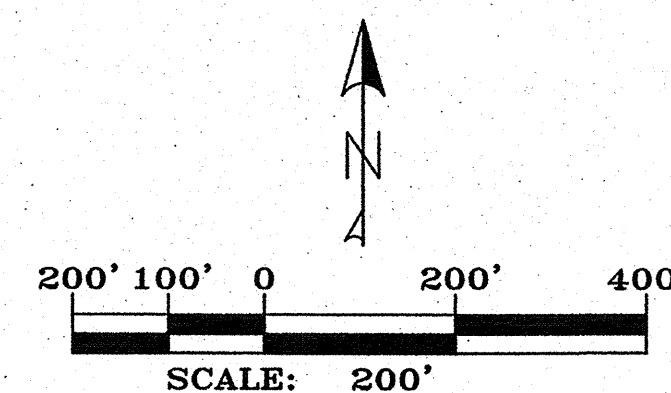
TRACT 5
BLACK RANCH
UNPLATTED

OFFSITE BASIN 2

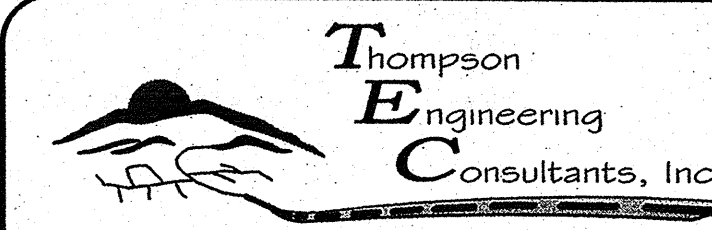
PETROGLYPH NATIONAL MONUMENT

LEGEND

- ANALYSIS POINT
- EXISTING STORM DRAIN
- FLOW DIRECTION
- FUTURE DEVELOPED STORM DRAIN



DATUM NAVD 1929



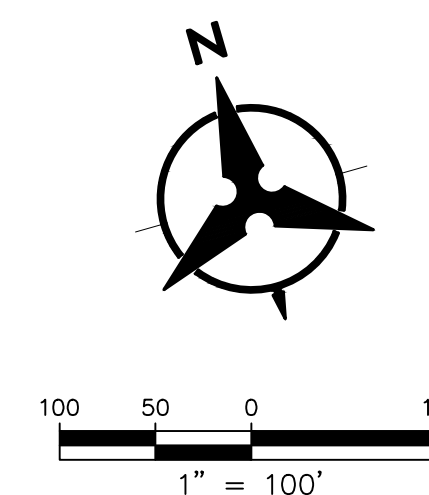
P.O. BOX 65760
ALBUQUERQUE, NM 87193

PHONE: (505) 271-2199
FAX: (505) 830-9248

AMENDMENT TO DMP FOR
THE TRAILS UNITS 1,2 AND 3
PLATE 1



VALLE PRADO FULLY DEVELOPED BASIN MAP



LEGEND

BASIN BOUNDARY	
FLOW ARROW	
PROPOSED STORM DRAIN	
EXISTING STORM DRAIN	
TEMPORARY BERM	
DMP BASIN BOUNDARY	

BASIN	AREA (AC)	Q (100YR-24HR) (CFS)
BASIN 1	3.2	8.9
BASIN 2	2.9	7.9
BASIN 3	4.4	11.2
BASIN 4	2.3	6.3
BASIN 5	1.2	3.1
FUTURE BASIN 1	6.9	19.9
FUTURE BASIN 2	4.8	13.5
FUTURE BASIN 3	3.8	10.8
FUTURE BASIN 4	3.1	8.1
OFFSITE BASIN 2	0.6	0.6
OFFSITE BASIN 3	0.7	0.7
OFFSITE BASIN 4	0.9	0.9
OFFSITE BASIN 5	2.1	2
OFFSITE BASIN WELL	1.0	2.3
OFFSITE BASIN 6	0.9	2.3
TOTAL	38.8	98.5



AP 1

AP 2