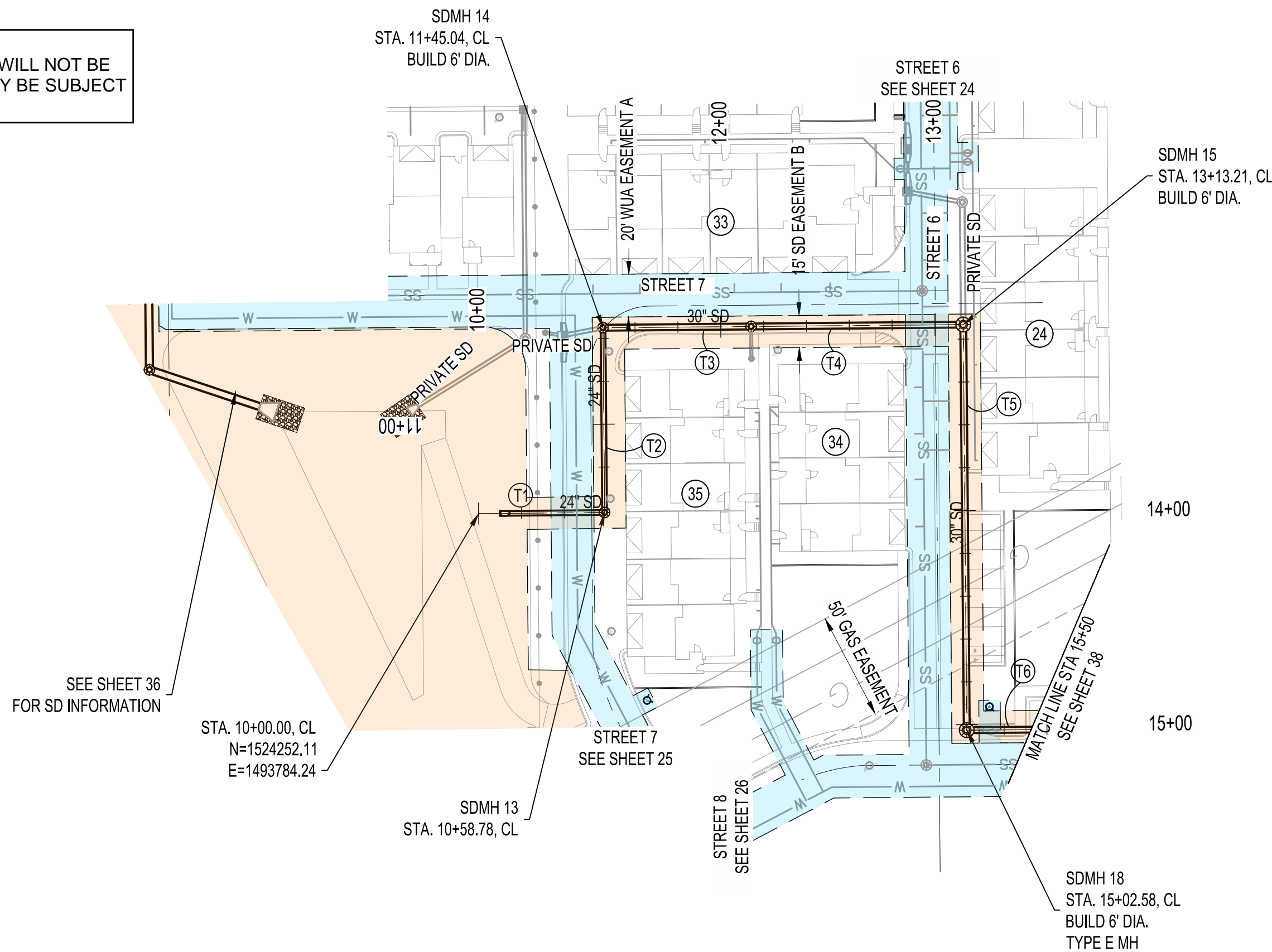


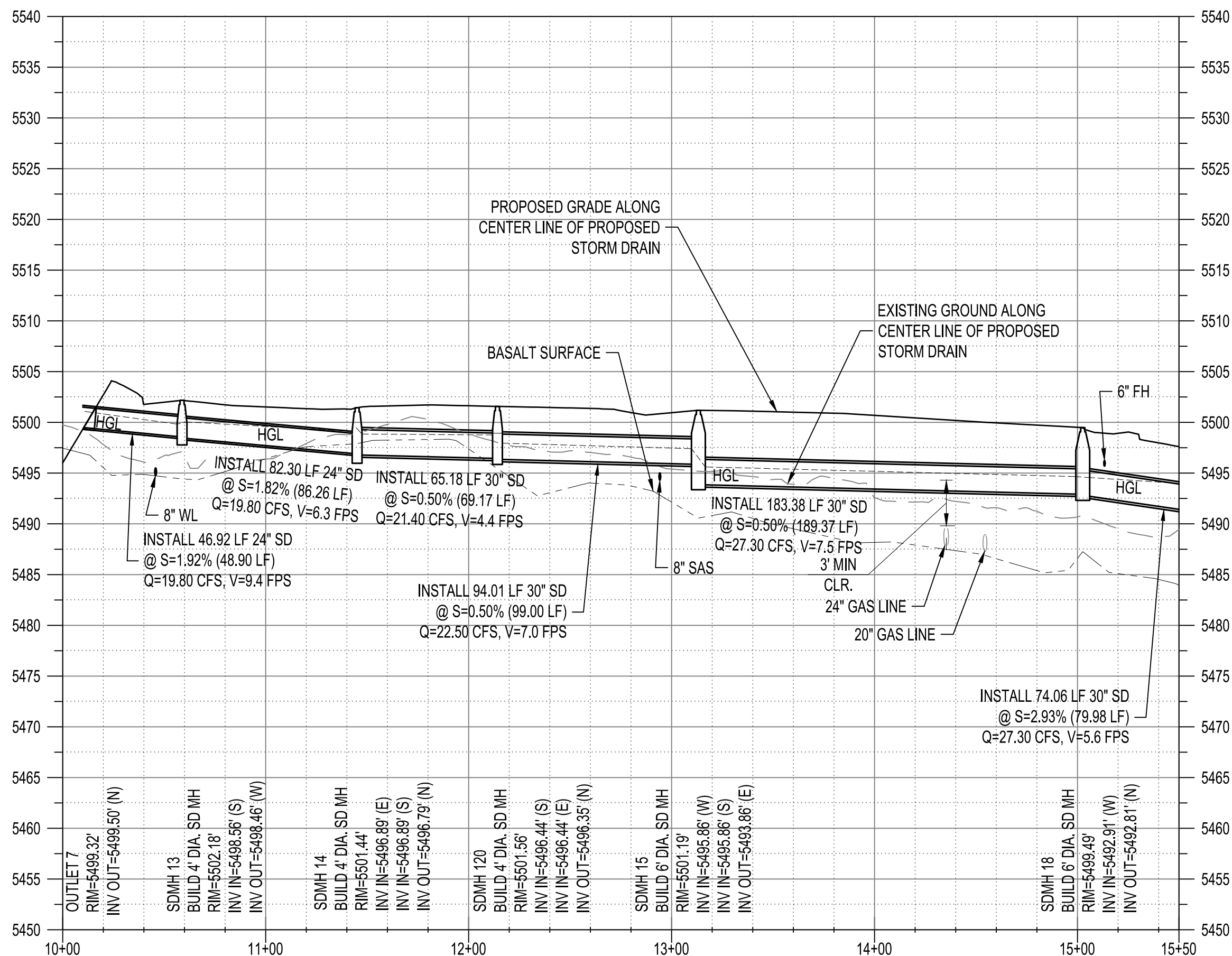






SEE SHEETS 24 & 25 FOR  
UTILITY CROSSINGS TABLE

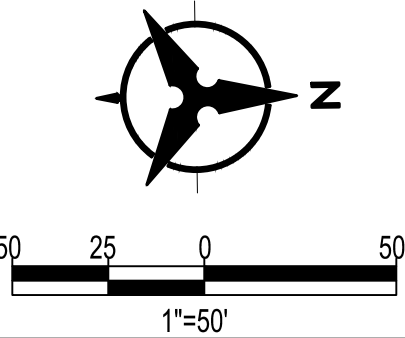
ID	BEARING	LENGTH
T1	S00°00'00"E	58.78'
T2	N90°00'00"E	86.26'
T3	S00°00'00"E	69.17'
T4	S00°00'00"E	99.00'
T5	N90°00'00"W	189.37'
T6	S00°00'00"E	79.98'



# STORM DRAIN POND A6-2 TO POND D1



- |  |    |   |
|--|----|---|
|   | A. | EASEMENT TO BE DEDICATE<br>TO THE WATER AUTHORITY<br>WITH FINAL PLAT.         |
|   | B. | EASEMENT TO BE DEDICATED<br>TO COA FOR PUBLIC SD<br>EASEMENT WITH FINAL PLAT. |
|   | C. | SD PRIVATE EASEMENT<br>FOR USE OF TRACT 3.                                    |
|  | D. | SAS PRIVATE EASEMENT<br>FOR USE OF TRACT 3.                                   |



HORIZONTAL SCALE: 1" = 50'    VERTICAL SCALE: 1" = 10'

## NOTES

1. THE CONTRACTOR SHALL FIELD VERIFY ALL EXISTING UTILITY LOCATIONS AND NOTIFY THE ENGINEER IMMEDIATELY OF ANY DISCREPANCIES.
2. ALL CURB RETURN RADII SHALL BE 25' UNLESS OTHERWISE SPECIFIED.
3. ALL CURVE DATA AND DIMENSIONS REFER TO FACE OF CURB UNLESS OTHERWISE SPECIFIED.
4. GRADE ELEVATIONS, WHERE NOTED, ARE ALONG FLOWLINE OF CURB UNLESS OTHERWISE SPECIFIED.
5. CONTRACTOR IS TO INSTALL A 4" X 4" X 5' POST AND EMS AT THE END OF EACH SANITARY SEWER SERVICE.
6. CONTRACTOR IS RESPONSIBLE FOR REPAIR AND/OR REPLACEMENT OF ALL UTILITY CONDUITS AND EXISTING LINES.
7. ANY ADDITIONAL GRADING REQUIRED TO MATCH PROPOSED STREET GRADES SHALL BE INCIDENTAL TO PAVING ITEMS.
8. CONTRACTOR SHALL PROVIDE THE INSPECTORS, (CITY AND PRIVATE) WITH THE PROPOSED HYDROSTATIC TESTING PLAN. THE PLAN MUST BE APPROVED BEFORE TESTING OPERATIONS BEGIN.
9. CONTRACTOR SHALL PARK EQUIPMENT AND VEHICLES AS NOT TO INTERFERE WITH NORMAL ACTIVITIES OF RESIDENTS OR OTHER CONTRACTORS ON SITE.
10. ANY DAMAGE TO THE EXISTING FACILITIES (CURB & GUTTER, PAVEMENT, CONDUITS, LANDSCAPING, UTILITY LINES, ETC.) DURING CONSTRUCTION SHALL BE REPLACED AT THE CONTRACTOR'S EXPENSE.
11. REMOVAL OF THE EXISTING CURB AND GUTTER TO NEAREST JOINT.
12. WHEELCHAIR RAMPS SHALL BE CONSTRUCTED PRIOR TO ACCEPTANCE OF CURB & GUTTER.
13. RCP SHALL BE INSTALLED SO THAT THE JOINT GAP AT THE HOME POSITION SHALL CONFORM TO THE APPROVED MANUFACTURER'S RECOMMENDATIONS. MANUFACTURER'S RECOMMENDED JOINT GAP TOLERANCES FOR EACH PIPE SIZE AND TYPE SHALL BE SUBMITTED TO THE ENGINEER FOR APPROVAL PRIOR TO PLACEMENT OF PIPE. RCP JOINTS SHALL NOT BE GROUTED UNLESS DIRECTED BY THE ENGINEER AFTER CITY APPROVAL.
14. ALL EXCAVATION, TRENCHING, AND SHORING ACTIVITIES MUST BE CARRIED-OUT IN ACCORDANCE WITH OSHA 29 CFR 1926.650 SUBPART P.
15. ELECTRONIC MARKER SPHERES (EMS) WILL BE PLACED ACCORDING TO SECTION 170 OF THE CITY OF ALBUQUERQUE STANDARD SPECIFICATION FOR PUBLIC WORKS CONSTRUCTION, 1986 EDITION AS REVISED THROUGH UPDATE #9.
16. AT UTILITY CROSSINGS WHERE LESS THAN 1.5 FOOT OF SEPARATION FROM STORM DRAIN PIPE OR MANHOLE IS PRESENT LEAN LIFT IS TO BE USED 1) FOR A DISTANCE OF 5 FEET ON EACH SIDE OF THE SD & FROM TOP OF STORM DRAIN TO BOTTOM OF SANITARY SEWER OR WATER LINE OR 2) FOR 10 FEET ALONG SANITARY SEWER OR WATER LINE CENTERED ON THE MANHOLE WITH DEPTH EQUAL TO 2X SEWER OR WATER LINE DIAMETER.
17. DEFLECT PIPE 1/2 OF ALLOWABLE MANUFACTURER SPECIFICATION. A VERTICAL & HORIZONTAL DEFLECTION SHALL NOT OCCUR AT SAME JOINT.
18. CONTRACTOR TO INSTALL A MIN 2' TANGENT SECTION ENTERING OR EXITING ANY BEND AT A CURVILINEAR PIPE.

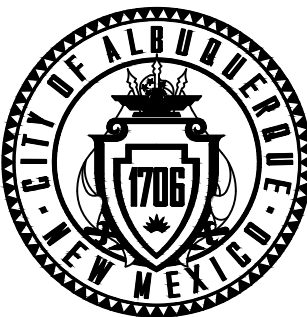
GENERAL NOTE:

ALL SANITARY SEWER MANHOLES SHALL BE 4' DIAMETER TYPE "E" AS PER ABCWUA STANDARD DRAWING 2101 UNLESS OTHERWISE NOTED.  
ALL STORM DRAIN MANHOLES SHALL BE 4' DIAMETER TYPE "C" AS PER ABCWUA STANDARD DRAWING 2208 UNLESS OTHERWISE NOTED.  
SAS LINE TO BE PVC (SDR-35)  
WATER LINE TO BE C900-PVC (DR-18).  
ALL WATER METERS 2" (UNLESS OTHERWISE NOTED)  
ALL VALVES AND BENDS TO BE RESTRAINED WITH RESTRAINING JOINT UNLESS OTHERWISE NOTED.

VALVES PER STD. DWG. 2326 & 2328  
MANHOLES PER STD. DWG. 2101 & 2102  
DROP MANHOLE PER STD. DWG. 2116  
WATER SERVICE PER STD. DWG. 2361, 2362 & 2368  
SAS SERVICE PER STD. DWG. 2125  
TRACER WIRE PER STD. DWG. 2190, 2191, 2302, 2365, 2342  
VISIT [http://www.abcwua.org/For\\_Builders.aspx](http://www.abcwua.org/For_Builders.aspx)  
FOR STANDARD DRAWINGS



CALL NM ONE-CALL SYSTEM  
SEVEN (7) DAYS PRIOR TO  
ANY EXCAVATION



CITY OF ALBUQUERQUE  
DEPARTMENT OF MUNICIPAL DEVELOPMENT  
ENGINEERING DIVISION

**BEDROCK  
STORM DRAIN PLAN AND PROFILE  
STORM DRAIN POND A6-2 TO POND D1**

DESIGN REVIEW COMMITTEE

CITY ENGINEER APPROVAL

ZONE MAP NO.

C-09-7

CITY PROJECT NO.

740579		
SHEET NO.	37	OF 40

## CONSULTANTS

## BENCH MARKS


SEAL


DESIGNED BY: JL

DRAWN BY: RY

CHECKED BY: JJ

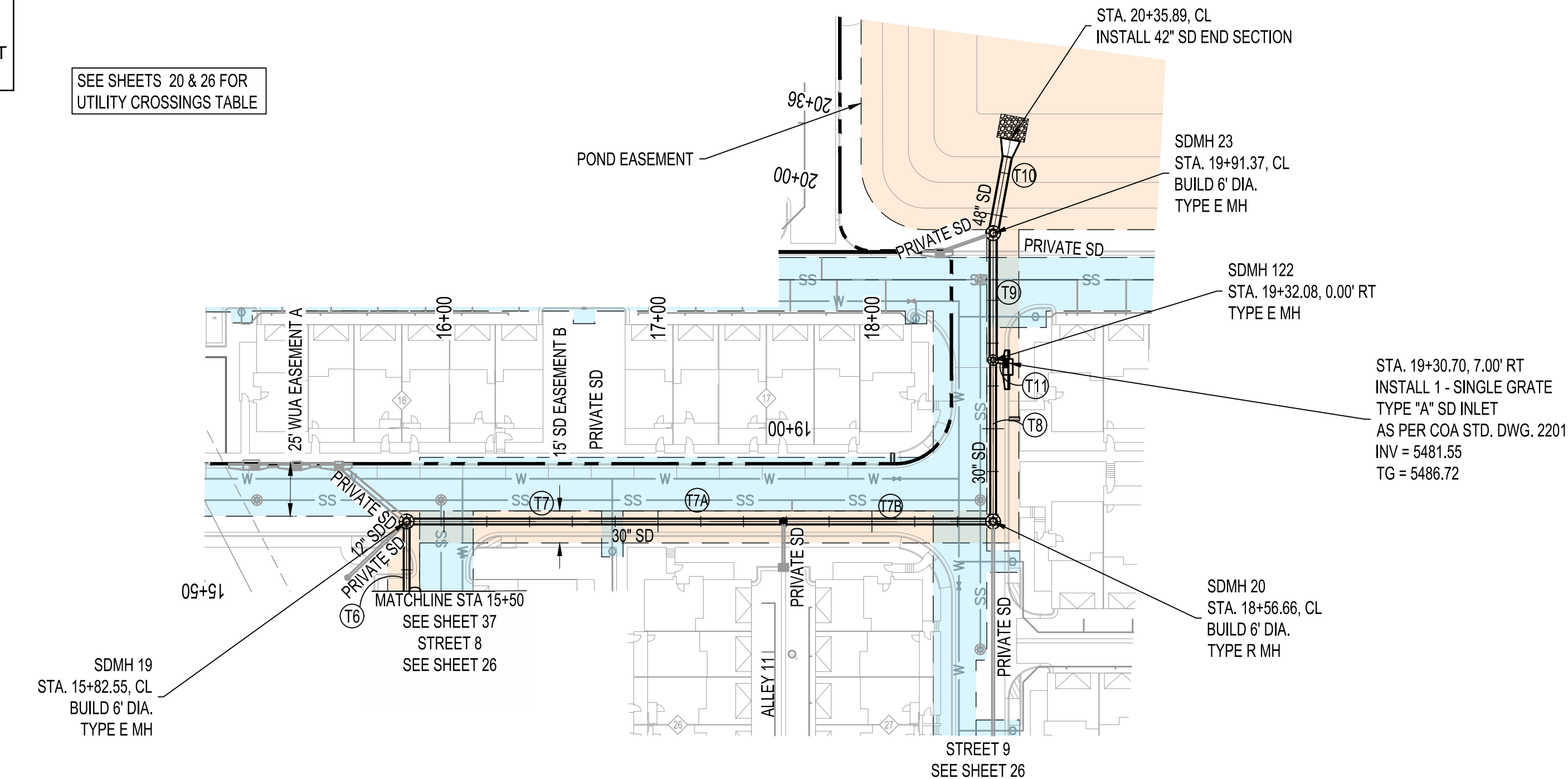
DATE	2/9/23
------	--------



NOTE:  
THE OUTLETS FOR POND A6-2 AND D-1 WILL NOT BE  
CONSTRUCTED UNTIL PHASE 3 AND MAY BE SUBJECT  
TO DESIGN MODIFICATIONS.

SEE SHEETS 20 & 26 FOR  
UTILITY CROSSINGS TABLE

CL/SD ALIGNMENT Tangent Table		
ID	BEARING	LENGTH
T6	S00°00'00"E	79.98'
T7	S90°00'00"W	82.94'
TA	S90°00'00"W	93.17'
TB	S90°00'00"W	98.00'
T8	S00°00'00"E	75.42'
T9	S00°00'00"E	59.28'
T10	S10°31'50"W	44.52'
T11	S78°49'24"E	7.14'



- A. EASEMENT TO BE DEDICATE TO THE WATER AUTHORITY WITH FINAL PLAT.
- B. EASEMENT TO BE DEDICATED TO COA FOR PUBLIC SD EASEMENT WITH FINAL PLAT.
- C. SD PRIVATE EASEMENT FOR USE OF TRACT 3.
- D. SAS PRIVATE EASEMENT FOR USE OF TRACT 3.

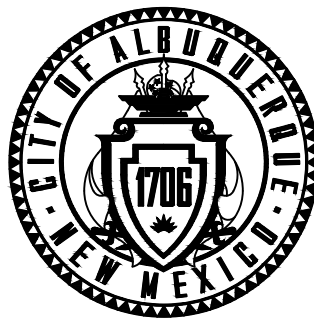
- NOTES
1. THE CONTRACTOR SHALL FIELD VERIFY ALL EXISTING UTILITY LOCATIONS AND NOTIFY THE ENGINEER IMMEDIATELY OF ANY DISCREPANCIES.
  2. ALL CURB RETURN RADII SHALL BE 25' UNLESS OTHERWISE SPECIFIED.
  3. ALL CURVE DATA AND DIMENSIONS REFER TO FACE OF CURB UNLESS OTHERWISE SPECIFIED.
  4. GRADE ELEVATIONS, WHERE NOTED, ARE ALONG FLOWLINE OF CURB UNLESS OTHERWISE SPECIFIED.
  5. CONTRACTOR IS TO INSTALL A 4" X 4" X 5' POST AND EMS AT THE END OF EACH SANITARY SEWER SERVICE.
  6. CONTRACTOR IS RESPONSIBLE FOR REPAIR AND/OR REPLACEMENT OF ALL UTILITY CONDUITS AND EXISTING LINES.
  7. ANY ADDITIONAL GRADING REQUIRED TO MATCH PROPOSED STREET GRADES SHALL BE INCIDENTAL TO PAVING ITEMS.
  8. CONTRACTOR SHALL PROVIDE THE INSPECTORS, (CITY AND PRIVATE) WITH THE PROPOSED HYDROSTATIC TESTING PLAN. THE PLAN MUST BE APPROVED BEFORE TESTING OPERATIONS BEGIN.
  9. CONTRACTOR SHALL PARK EQUIPMENT AND VEHICLES AS NOT TO INTERFERE WITH NORMAL ACTIVITIES OF RESIDENTS OR OTHER CONTRACTORS ON SITE.
  10. ANY DAMAGE TO THE EXISTING FACILITIES (CURB & GUTTER, PAVEMENT, CONDUITS, LANDSCAPING, UTILITY LINES, ETC.) DURING CONSTRUCTION SHALL BE REPLACED AT THE CONTRACTORS' EXPENSE.
  11. REMOVAL OF THE EXISTING CURB AND GUTTER TO NEAREST JOINT.
  12. WHEELCHAIR RAMPS SHALL BE CONSTRUCTED PRIOR TO ACCEPTANCE OF CURB & GUTTER.
  13. RCP SHALL BE INSTALLED SO THAT THE JOINT GAP AT THE HOME POSITION SHALL CONFORM TO THE APPROVED MANUFACTURER'S RECOMMENDATIONS. MANUFACTURER'S RECOMMENDED JOINT GAP TOLERANCES FOR EACH PIPE SIZE AND TYPE SHALL BE SUBMITTED TO THE ENGINEER FOR APPROVAL PRIOR TO PLACEMENT OF PIPE. RCP JOINTS SHALL NOT BE GROUTED UNLESS DIRECTED BY THE ENGINEER AFTER CITY APPROVAL.
  14. ALL EXCAVATION, TRENCHING, AND SHORING ACTIVITIES MUST BE CARRIED-OUT IN ACCORDANCE WITH OSHA 29 CFR 1926.650 SUBPART P.
  15. ELECTRONIC MARKER SPHERES (EMS) WILL BE PLACED ACCORDING TO SECTION 170 OF THE CITY OF ALBUQUERQUE STANDARD SPECIFICATION FOR PUBLIC WORKS CONSTRUCTION, 1986 EDITION AS REVISED THROUGH UPDATE #9.
  16. AT UTILITY CROSSINGS WHERE LESS THAN 1.5 FOOT OF SEPARATION FROM STORM DRAIN PIPE OR MANHOLE IS PRESENT LEAN FILL IS TO BE USED 1) FOR A DISTANCE OF 5 FEET ON EACH SIDE OF THE SD & FROM TOP OF STORM DRAIN TO BOTTOM OF SANITARY SEWER OR WATER LINE OR 2) FOR 10 FEET ALONG SANITARY SEWER OR WATER LINE CENTERED ON THE MANHOLE WITH DEPTH EQUAL TO 2X SEWER OR WATER LINE DIAMETER.
  17. DEFLECT PIPE 1/2 OF ALLOWABLE MANUFACTURER SPECIFICATION. A VERTICAL & HORIZONTAL DEFLECTION SHALL NOT OCCUR AT SAME JOINT.
  18. CONTRACTOR TO INSTALL A MIN 2' TANGENT SECTION ENTERING OR EXITING ANY BEND AT A CURVILINEAR PIPE.

GENERAL NOTE:  
ALL SANITARY SEWER MANHOLES SHALL BE 4' DIAMETER TYPE "E" AS PER ABCWUA STANDARD DRAWING 2101 UNLESS OTHERWISE NOTED.  
ALL STORM DRAIN MANHOLES SHALL BE 4' DIAMETER TYPE "C" AS PER ABCWUA STANDARD DRAWING 2208 UNLESS OTHERWISE NOTED.  
SAS LINE TO BE PVC (SDR-35)  
WATER LINE TO BE C900-PVC (DR-18).  
ALL WATER METERS 2" (UNLESS OTHERWISE NOTED)  
ALL VALVES AND BENDS TO BE RESTRAINED WITH RESTRAINING JOINT UNLESS OTHERWISE NOTED.

VALVES PER STD. DWG. 2326 & 2328  
MANHOLES PER STD. DWG. 2101 & 2102  
DROP MANHOLE PER STD. DWG. 2116  
WATER SERVICE PER STD. DWG. 2361, 2362 & 2368  
SAS SERVICE PER STD. DWG. 2125  
TRACER WIRE PER STD. DWG. 2190, 2191, 2302, 2365, 2342  
VISIT [http://www.abcwua.org/For\\_Builders.aspx](http://www.abcwua.org/For_Builders.aspx)  
FOR STANDARD DRAWINGS



CALL NM ONE-CALL SYSTEM  
SEVEN (7) DAYS PRIOR TO  
ANY EXCAVATION



CITY OF ALBUQUERQUE  
DEPARTMENT OF MUNICIPAL DEVELOPMENT  
ENGINEERING DIVISION

BEDROCK  
STORM DRAIN PLAN AND PROFILE  
STORM DRAIN POND A6-2 TO POND D1

DESIGN REVIEW COMMITTEE	CITY ENGINEER APPROVAL	ZONE MAP NO. C-09-Z
		CITY PROJECT NO. 740579
		SHEET NO. 38 OF 40