

CITY OF ALBUQUERQUE

Planning Department
Alan Varela, Director



Mayor Timothy M. Keller

January 21, 2026

Josh Lutz, PE
Bohannon Huston, Inc.
7500 Jefferson St NE
Albuquerque, NM 87109

**RE: Bedrock
7640 Woodmont Ave NW
Certificate of Occupancy – Bldg 22, 23, 24, 29, 30, and 31
Engineer's Certification Date: 01/12/2026
Engineer's Stamp Date: 08/27/2024
Hydrology File: C09D011B**

Dear Mr. Lutz:

PO Box 1293
Albuquerque
NM 87103
www.cabq.gov

Based on the Engineer's Partial Grading and Drainage Certification received 1/15/2026 and site visit on 1/21/2026, this letter serves as an approval from the Hydrology Section for a Certificate of Occupancy for Buildings 22, 23, 24, 29, 30, and 31 to be issued by the Building and Safety Division.

If you have any questions, please contact me at 505-924-3314 or amontoya@cabq.gov.

Sincerely,

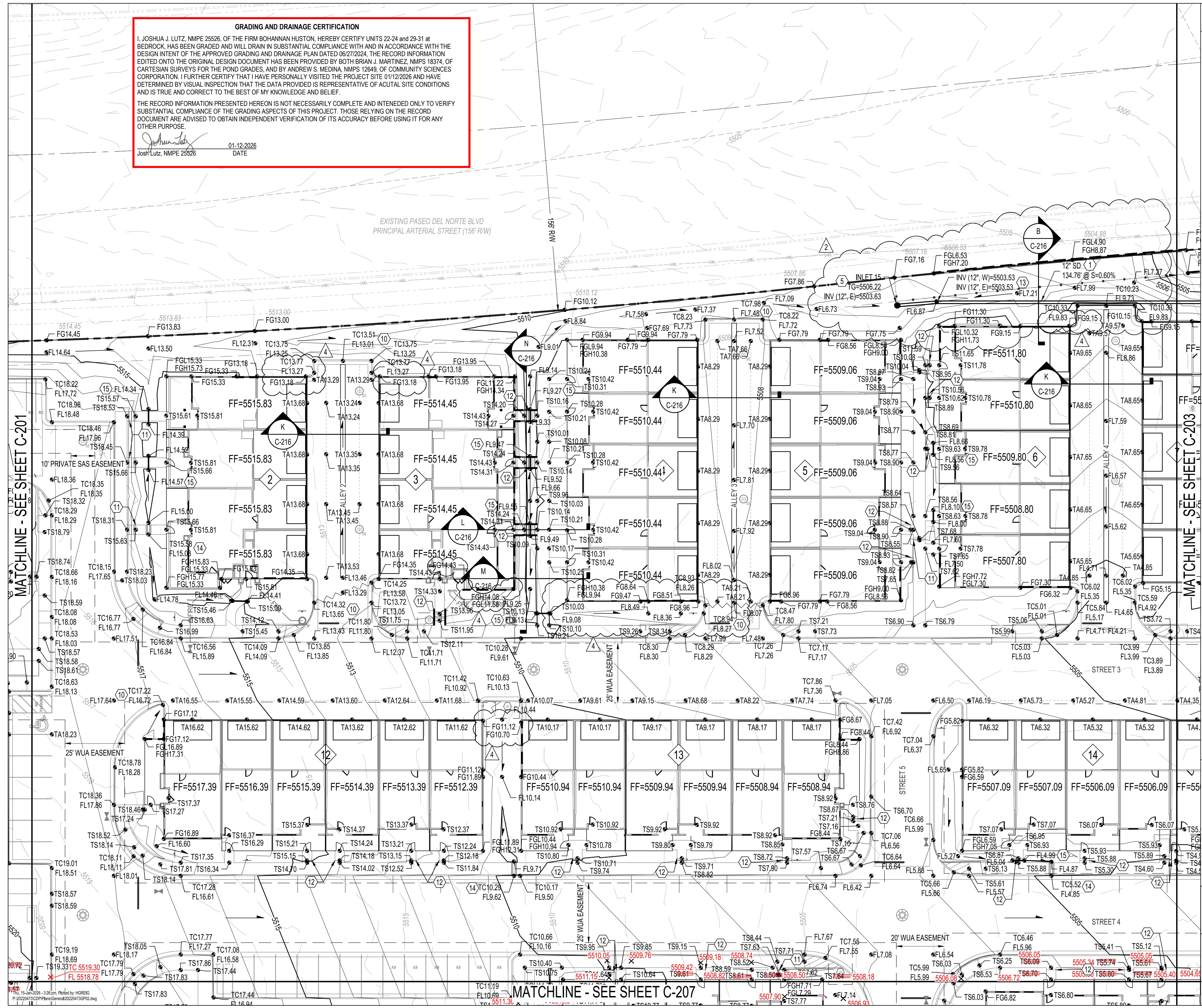
Anthony Montoya, Jr., P.E., C.F.M.
Senior Engineer, Hydrology
Planning Department, Development Review Services

GRADING AND DRAINAGE CERTIFICATION

I, JOSHUA J. LUTZ, NMPE 25526, OF THE FIRM BOHANNAN HUSTON, HEREBY CERTIFY UNITS 22-24 and 29-31 at BEDROCK, HAS BEEN GRADED AND WILL DRAIN IN SUBSTANTIAL COMPLIANCE WITH AND IN ACCORDANCE WITH THE DESIGN INTENT OF THE APPROVED GRADING AND DRAINAGE PLAN DATED 06/27/2024. THE RECORD INFORMATION EDITED ONTO THE ORIGINAL DESIGN DOCUMENT HAS BEEN PROVIDED BY BOTH BRIAN J. MARTINEZ, NMPS 18374, OF CARTESIAN SURVEYS FOR THE POND GRADES, AND BY ANDREW S. MEDINA, NMPS 12649, OF COMMUNITY SCIENCES CORPORATION. I FURTHER CERTIFY THAT I HAVE PERSONALLY VISITED THE PROJECT SITE 01/12/2026 AND HAVE DETERMINED BY VISUAL INSPECTION THAT THE DATA PROVIDED IS REPRESENTATIVE OF ACTUAL SITE CONDITIONS AND IS TRUE AND CORRECT TO THE BEST OF MY KNOWLEDGE AND BELIEF.

THE RECORD INFORMATION PRESENTED HEREON IS NOT NECESSARILY COMPLETE AND INTENDED ONLY TO VERIFY SUBSTANTIAL COMPLIANCE OF THE GRADING ASPECTS OF THIS PROJECT. THOSE RELYING ON THE RECORD DOCUMENT ARE ADVISED TO OBTAIN INDEPENDENT VERIFICATION OF ITS ACCURACY BEFORE USING IT FOR ANY OTHER PURPOSE.

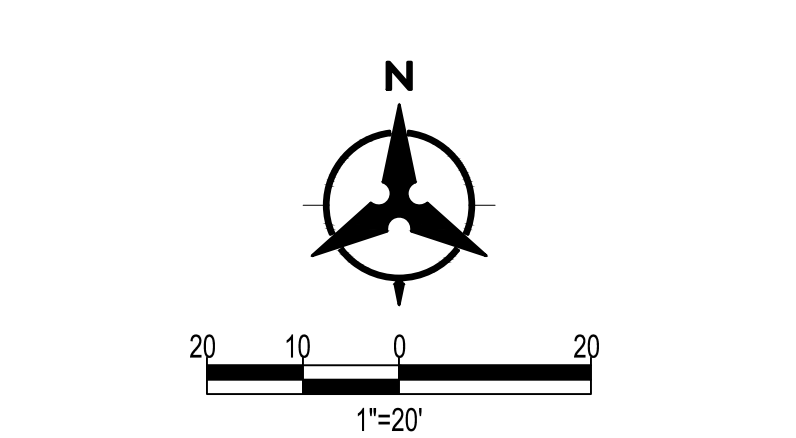
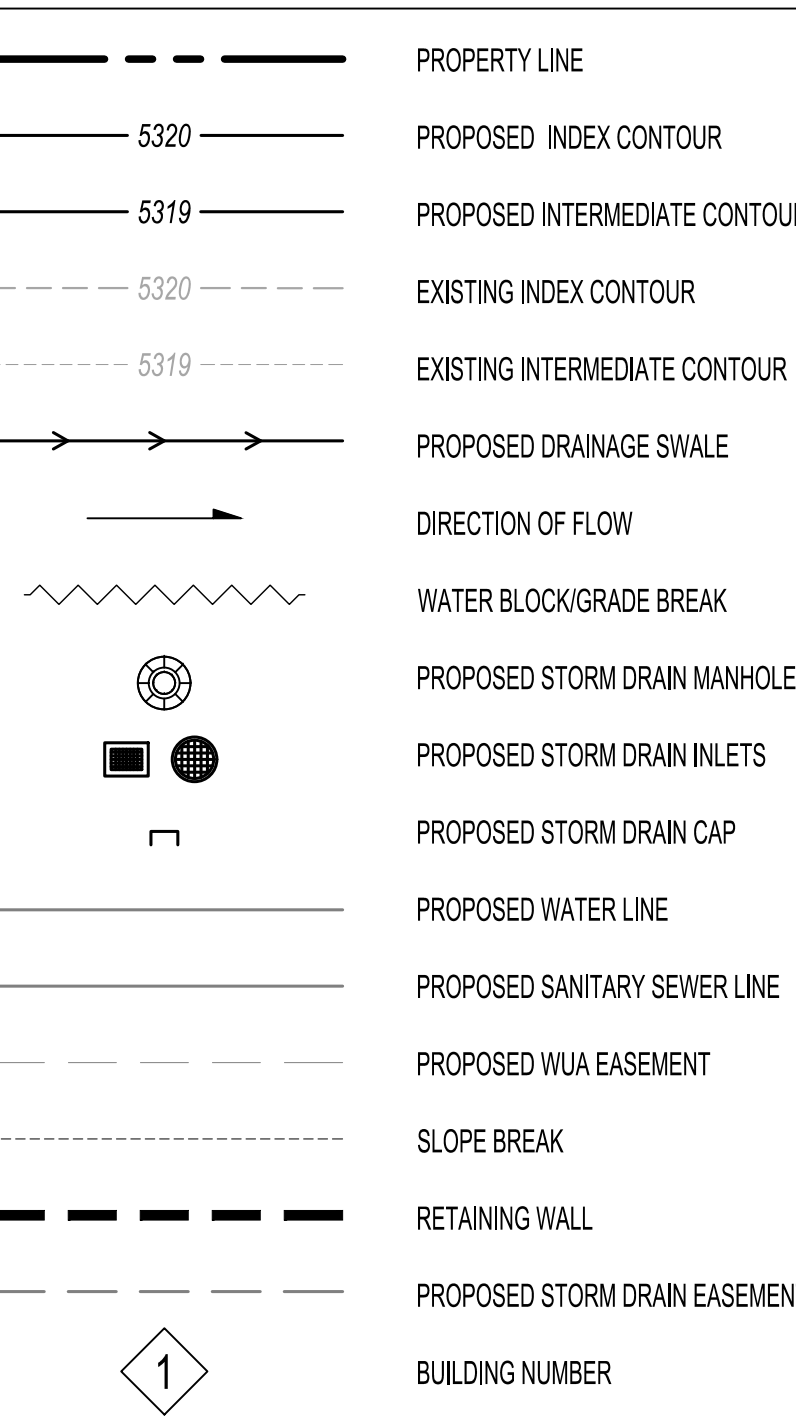
Joshua J. Lutz
 Josh Lutz, NMPE 25526
 01-12-2026
 DATE



GRADING KEYED NOTES

- INSTALL STORM DRAIN PIPE. SEE PLAN FOR SIZE & SLOPE.
- CONSTRUCT 4" DIA TYPE "C" STORM DRAIN MANHOLE PER COA STD DWG 2208.
- CONSTRUCT 4" DIA TYPE "E" STORM DRAIN MANHOLE PER COA STD DWG 2209.
- CONSTRUCT TYPE "A" SINGLE GRATE STORM DRAIN INLET PER COA STD DWG 2201.
- CONSTRUCT 18" (UNLESS OTHERWISE NOTED) NYLOPLAST STORM DRAIN INLET WITH DOME GRATE.
- CONSTRUCT TYPE "C" SINGLE GRATE STORM DRAIN INLET PER COA STD DWG 2205.
- CONSTRUCT TYPE "D" SINGLE GRATE STORM DRAIN INLET PER COA STD DWG 2206.
- CONSTRUCT TYPE "A" DOUBLE GRATE STORM DRAIN INLET PER COA STD DWG 2201.
- INSTALL STORM DRAIN FLARED END SECTION. SIZE PER PLANS.
- INSTALL 2" CONCRETE CURB OPENING.
- INSTALL STAIRS. SEE STRUCTURAL DRAWINGS FOR DETAILS.
- INSTALL STAIRS PER TYPICAL SECTION. SEE SHEET C-218, DETAIL L.
- INSTALL PRE-MANUFACTURED STORM DRAIN FITTING. SIZE PER PLANS.
- INSTALL SIDEWALK CULVERT PER COA STD DWG 2236.
- INSTALL 8" DIAMETER PIPE CULVERT.
- CONNECT TO EXISTING INFRASTRUCTURE. CONTRACTOR TO VERIFY ELEVATION.
- 2X2 NYLOPLAST CURB INLET
- INSTALL 12" (UNLESS OTHERWISE NOTED) NYLOPLAST STORM DRAIN INLET WITH ADA RATED PEDESTRIAN GRATE.
- CONSTRUCT TYPE "D" DOUBLE GRATE STORM DRAIN INLET PER COA STD DWG 2206.
- INSTALL CONCRETE RUNDOWN PER DETAIL 1, SHEET C-218.
- INSTALL RIPRAP BLANKET PER DETAIL 2, SHEET C-218.

LEGEND



BENCH MARKS

ALBUQUERQUE CONTROL SURVEY MONUMENT "UNION"
GEOGRAPHIC POSITION (NAD 83)
N.M. STATE PLANE COORDINATES (CENTRAL ZONE)
N = 1,523,503.475 E = 1,483,655.030
GROUND TO GRID FACTOR = 0.999864960
DELTA ALPHA = 00° 16'38.96"
ELEVATION = 5524.950 (NAVD 88)

ENGINEER'S SEAL

AS-BUILT INFORMATION

BY	CONTRACTOR	DATE

REVISIONS

NO.	DATE	DESCRIPTION
1	05-09-24	ASH100% VE EFFORTS
2	03-07-25	ASH100% RETAINING WALLS AND GARAGE ELEVATIONS
3	03-07-25	ASH100% RETAINING WALLS AND GARAGE ELEVATIONS

DESIGN

DESIGNED BY	CHECKED BY	DRAWN BY
JL	JL	AR

Bohannon Huston
 www.bhinc.com 800.877.5332

BEDROCK GRADING PLAN

GRADING AND DRAINAGE CERTIFICATION

I, JOSHUA J. LUTZ, NMPE 25526, OF THE FIRM BOHANNAN HUSTON, HEREBY CERTIFY UNITS 22-24 and 29-31 at BEDROCK, HAS BEEN GRADED AND WILL DRAIN IN SUBSTANTIAL COMPLIANCE WITH AND IN ACCORDANCE WITH THE DESIGN INTENT OF THE APPROVED GRADING AND DRAINAGE PLAN DATED 06/27/2024. THE RECORD INFORMATION EDITED ONTO THE ORIGINAL DESIGN DOCUMENT HAS BEEN PROVIDED BY BOTH BRIAN J. MARTINEZ, NMPS 18374, OF CARTESIAN SURVEYS FOR THE POND GRADES, AND BY ANDREW S. MEDINA, NMPS 12649, OF COMMUNITY SCIENCES CORPORATION. I FURTHER CERTIFY THAT I HAVE PERSONALLY VISITED THE PROJECT SITE 01/12/2026 AND HAVE DETERMINED BY VISUAL INSPECTION THAT THE DATA PROVIDED IS REPRESENTATIVE OF ACTUAL SITE CONDITIONS AND IS TRUE AND CORRECT TO THE BEST OF MY KNOWLEDGE AND BELIEF.

THE RECORD INFORMATION PRESENTED HEREON IS NOT NECESSARILY COMPLETE AND INTENDED ONLY TO VERIFY SUBSTANTIAL COMPLIANCE OF THE GRADING ASPECTS OF THIS PROJECT. THOSE RELYING ON THE RECORD DOCUMENT ARE ADVISED TO OBTAIN INDEPENDENT VERIFICATION OF ITS ACCURACY BEFORE USING IT FOR ANY OTHER PURPOSE.

Joshua J. Lutz
 DATE: 01-12-2026
 J. Lutz, NMPE 25526

MATCHLINE - SEE SHEET C-202

GRADING KEYED NOTES

- INSTALL STORM DRAIN PIPE. SEE PLAN FOR SIZE & SLOPE.
- CONSTRUCT 4' DIA TYPE "C" STORM DRAIN MANHOLE PER COA STD DWG 2208.
- CONSTRUCT 4' DIA TYPE "E" STORM DRAIN MANHOLE PER COA STD DWG 2209.
- CONSTRUCT TYPE "A" SINGLE GRATE STORM DRAIN INLET PER COA STD DWG 2201.
- CONSTRUCT 18" (UNLESS OTHERWISE NOTED) NYLOPLAST STORM DRAIN INLET WITH DOME GRATE.
- CONSTRUCT TYPE "C" SINGLE GRATE STORM DRAIN INLET PER COA STD DWG 2205.
- CONSTRUCT TYPE "D" SINGLE GRATE STORM DRAIN INLET PER COA STD DWG 2206.
- CONSTRUCT TYPE "A" DOUBLE GRATE STORM DRAIN INLET PER COA STD DWG 2201.
- INSTALL STORM DRAIN FLARED END SECTION. SIZE PER PLANS.
- INSTALL 2" CONCRETE CURB OPENING.
- INSTALL STAIRS. SEE STRUCTURAL DRAWINGS FOR DETAILS.
- INSTALL STAIRS PER TYPICAL SECTION. SEE SHEET C-218, DETAIL L.
- INSTALL PRE-MANUFACTURED STORM DRAIN FITTING. SIZE PER PLANS.
- INSTALL SIDEWALK CULVERT PER COA STD DWG 2236.
- INSTALL 8" DIAMETER PIPE CULVERT.
- CONNECT TO EXISTING INFRASTRUCTURE. CONTRACTOR TO VERIFY ELEVATION.
- 2X2 NYLOPLAST CURB INLET
- INSTALL 12" (UNLESS OTHERWISE NOTED) NYLOPLAST STORM DRAIN INLET WITH ADA RATED PEDESTRIAN GRATE.
- CONSTRUCT TYPE "D" DOUBLE GRATE STORM DRAIN INLET PER COA STD DWG 2206.
- INSTALL CONCRETE RUNDOWN PER DETAIL 1, SHEET C-218.
- INSTALL RIPRAP BLANKET PER DETAIL 2, SHEET C-218.

LEGEND

- PROPERTY LINE
- 5320 PROPOSED INDEX CONTOUR
- 5319 PROPOSED INTERMEDIATE CONTOUR
- 5320 EXISTING INDEX CONTOUR
- 5319 EXISTING INTERMEDIATE CONTOUR
- PROPOSED DRAINAGE SWALE
- DIRECTION OF FLOW
- WATER BLOCK/GRADE BREAK
- PROPOSED STORM DRAIN MANHOLE
- PROPOSED STORM DRAIN INLETS
- PROPOSED STORM DRAIN CAP
- PROPOSED WATER LINE
- PROPOSED SANITARY SEWER LINE
- PROPOSED WUA EASEMENT
- SLOPE BREAK
- RETAINING WALL
- PROPOSED STORM DRAIN EASEMENT
- BUILDING NUMBER

BENCH MARKS

ALBUQUERQUE CONTROL SURVEY MONUMENT "UNION"
GEOGRAPHIC POSITION (NAD 83)
N.M. STATE PLANE COORDINATES (CENTRAL ZONE)
N = 4,523,503.476 E = 1,483,655.030
GROUND TO GRID FACTOR = 0.999864360
DELTA ALPHA = 0° 16' 58.96"
ELEVATION = 5524.950 (NAVD 88)

ENGINEER'S SEAL

AS-BUILT INFORMATION

BY	CONTRACTOR	DATE
HG		
HG		
HG		

REVISIONS

NO.	DATE	DESCRIPTION
1	09-05-24	ASHOODEVE EFFORTS
2	03-07-25	ASHOODEVE EFFORTS
5	05-27-25	ASHOODEVE EFFORTS

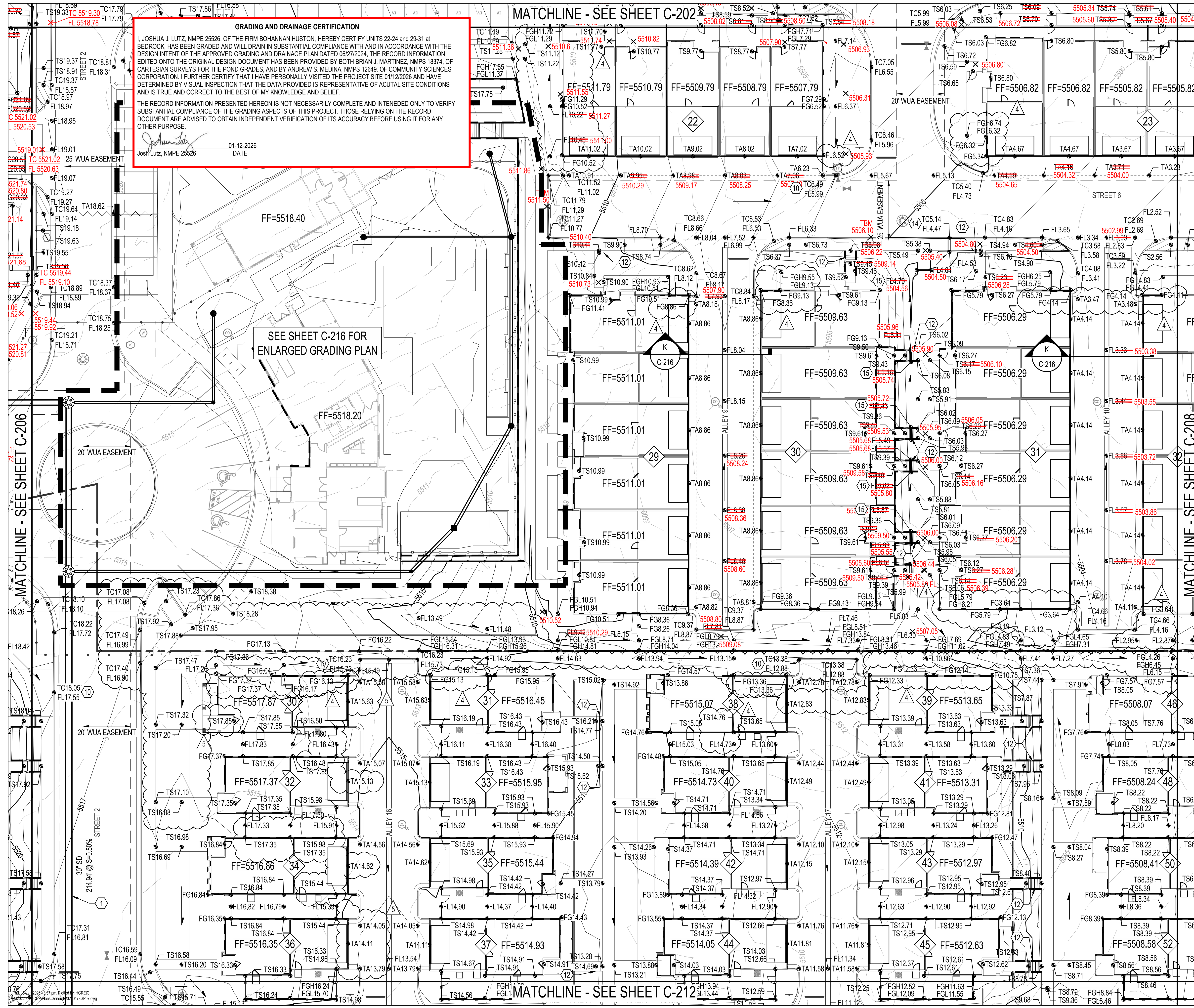
DESIGN

NO.	DATE	DESIGNED BY	CHECKED BY	DRAWN BY
1		JL	JL	AR

Bohannon Huston
 www.bhinc.com 800.877.5332

BEDROCK GRADING PLAN

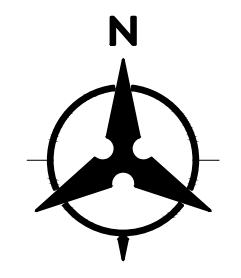
BHI PROJECT NO. 20220473 DWG NO. C-207 SHEET 27 OF 55



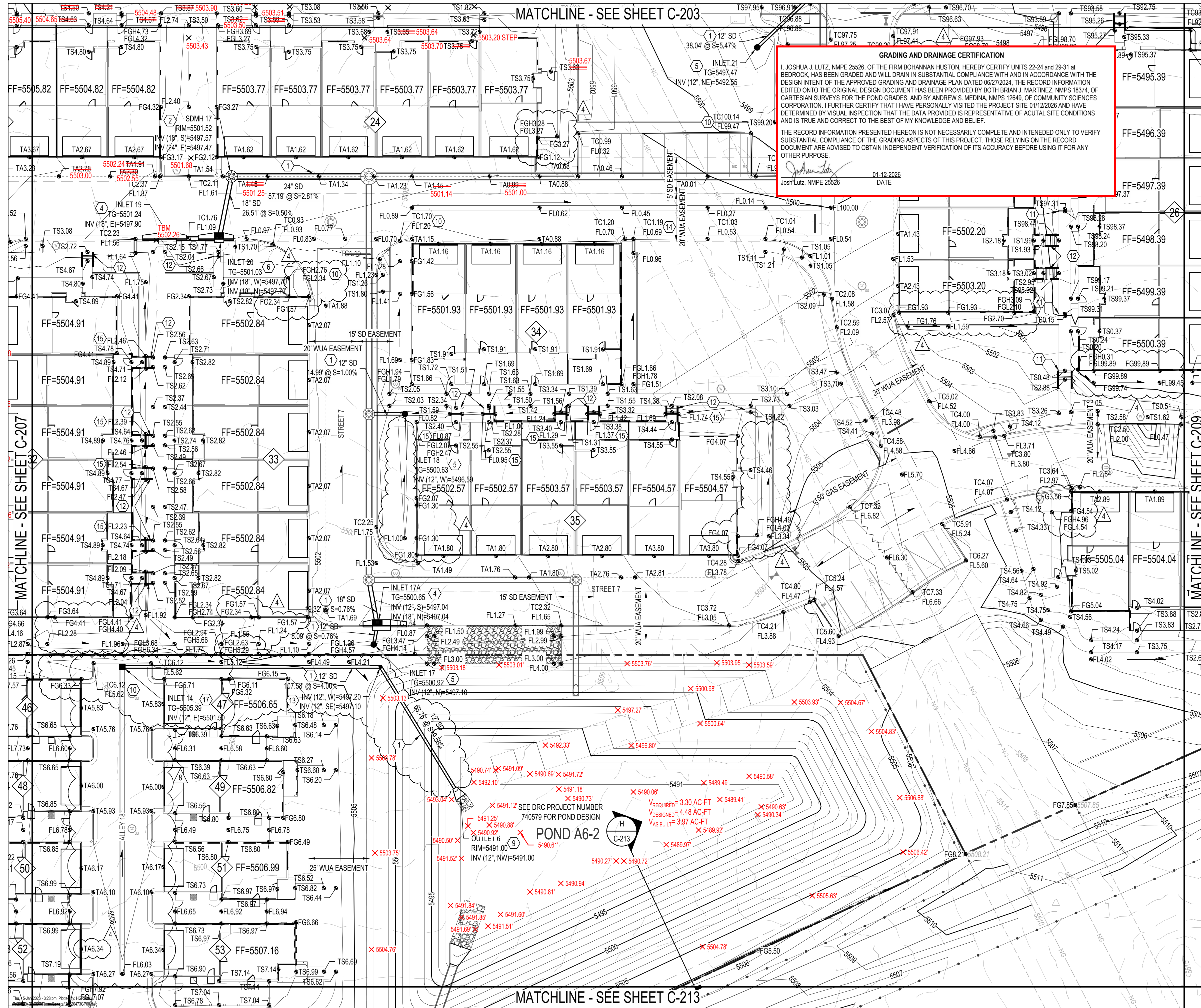
SEE SHEET C-216 FOR ENLARGED GRADING PLAN

MATCHLINE - SEE SHEET C-206

MATCHLINE - SEE SHEET C-208



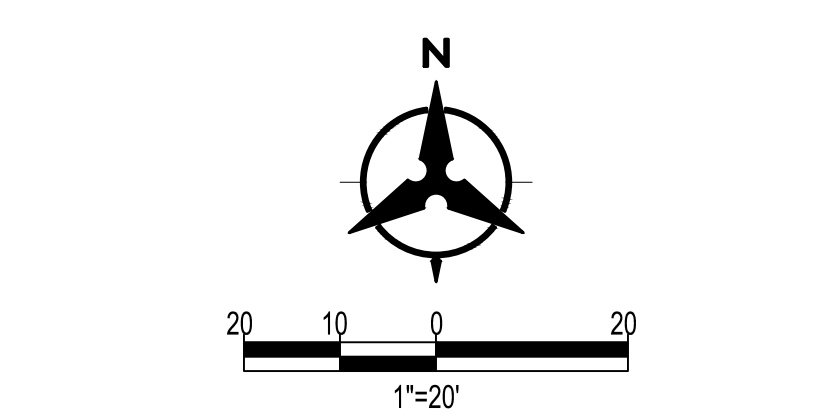
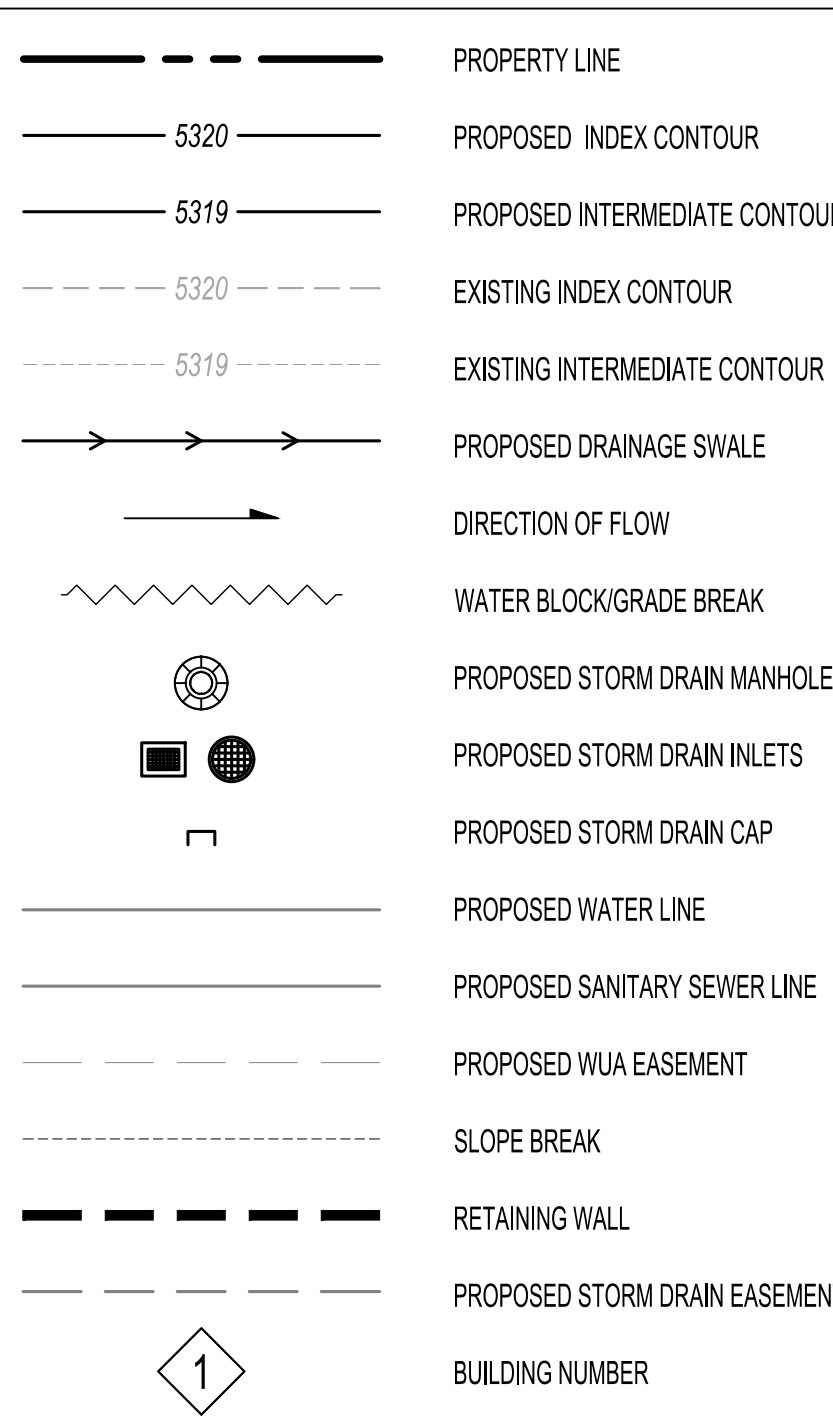
DATE: 01/12/2026
 2:45 PM
 J. Lutz, NMPE 25526



GRADING KEYED NOTES

- INSTALL STORM DRAIN PIPE. SEE PLAN FOR SIZE & SLOPE.
- CONSTRUCT 4' DIA TYPE "C" STORM DRAIN MANHOLE PER COA STD DWG 2208.
- CONSTRUCT 4' DIA TYPE "E" STORM DRAIN MANHOLE PER COA STD DWG 2209.
- CONSTRUCT TYPE "A" SINGLE GRATE STORM DRAIN INLET PER COA STD DWG 2201.
- CONSTRUCT 15" (UNLESS OTHERWISE NOTED) NYLOPLAST STORM DRAIN INLET WITH DOME GRATE.
- CONSTRUCT TYPE "C" SINGLE GRATE STORM DRAIN INLET PER COA STD DWG 2205.
- CONSTRUCT TYPE "D" SINGLE GRATE STORM DRAIN INLET PER COA STD DWG 2206.
- CONSTRUCT TYPE "A" DOUBLE GRATE STORM DRAIN INLET PER COA STD DWG 2201.
- INSTALL STORM DRAIN FLARED END SECTION. SIZE PER PLANS.
- INSTALL 2" CONCRETE CURB OPENING.
- INSTALL STAIRS. SEE STRUCTURAL DRAWINGS FOR DETAILS.
- INSTALL STAIRS PER TYPICAL SECTION. SEE SHEET C-218, DETAIL L.
- INSTALL PRE-MANUFACTURED STORM DRAIN FITTING. SIZE PER PLANS.
- INSTALL SIDEWALK CULVERT PER COA STD DWG 2236.
- INSTALL 8" DIAMETER PIPE CULVERT.
- CONNECT TO EXISTING INFRASTRUCTURE. CONTRACTOR TO VERIFY ELEVATION.
- 2X2 NYLOPLAST CURB INLET
- INSTALL 12" (UNLESS OTHERWISE NOTED) NYLOPLAST STORM DRAIN INLET WITH ADA RATED PEDESTRIAN GRATE.
- CONSTRUCT TYPE "D" DOUBLE GRATE STORM DRAIN INLET PER COA STD DWG 2206.
- INSTALL CONCRETE RUNDOWN PER DETAIL 1, SHEET C-218.
- INSTALL RIPRAP BLANKET PER DETAIL 2, SHEET C-218.

LEGEND



Bohannan Huston
 www.bhinc.com 800.877.5332

BENCH MARKS

ALBUQUERQUE CONTROL SURVEY MONUMENT "UNION"
GEOGRAPHIC POSITION (NAD 83)
N.M. STATE PLANE COORDINATES (CENTRAL ZONE)
N = 1,523,503.475 E = 1,483,655.030
GROUND TO GRID FACTOR = 0.999864360
DELTA ALPHA = 0° 16' 58.96"
ELEVATION = 5524.950 (NAVD 88)

ENGINEER'S SEAL

AS-BUILT INFORMATION

BY	CONTRACTOR	DATE

REVISIONS

NO.	DATE	DESCRIPTION
2	09-05-24	ASH100% VE EFFORTS
4	03-07-25	ASH100% RETAINING WALLS AND GARAGE ELEVATIONS
6	07-10-25	ASH100% DRIVEWAY GRADES
8	09-12-25	ASH100% GRADING UPDATES

DESIGN

NO.	DATE	DESIGNED BY	CHECKED BY	DRAWN BY
1				

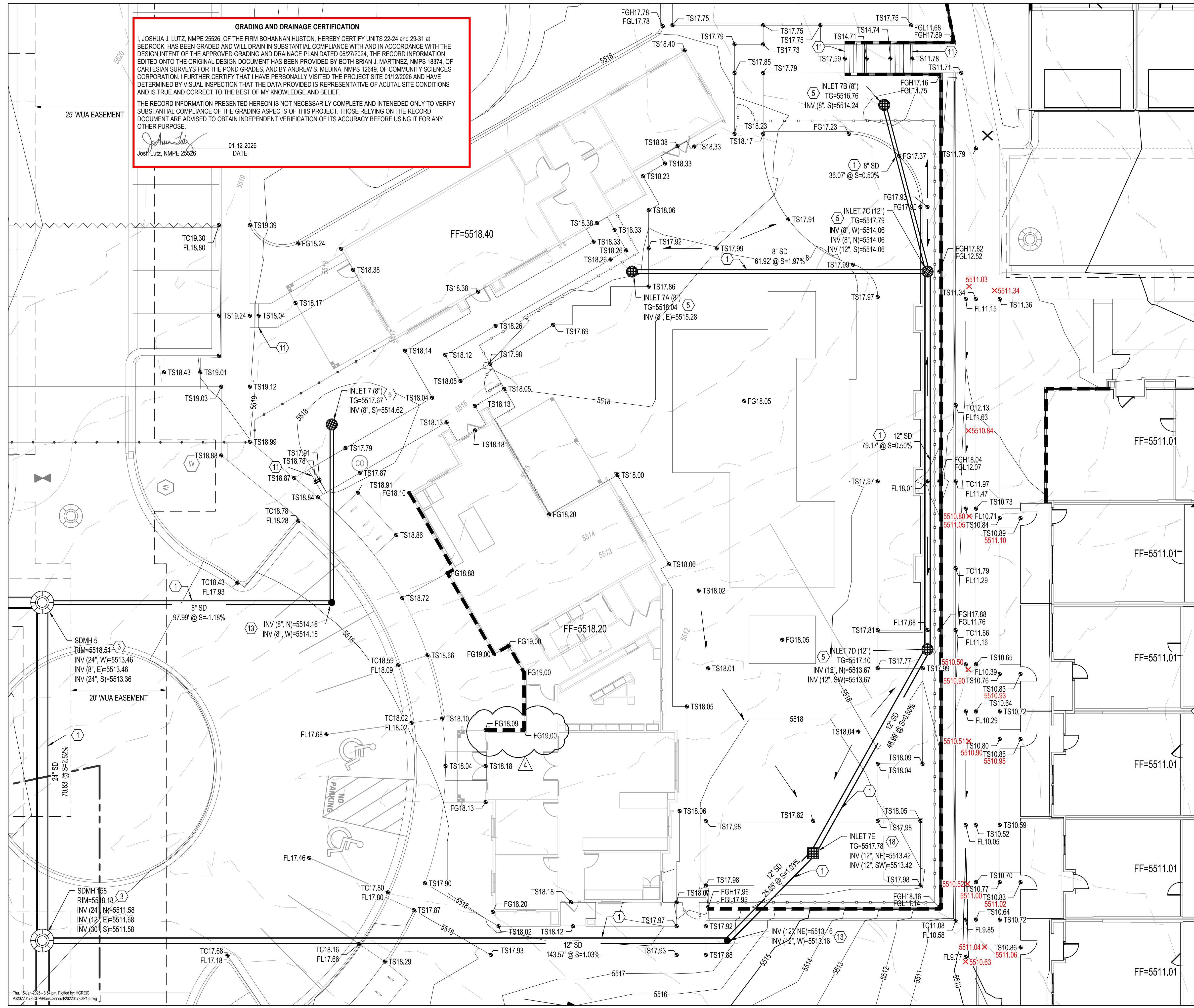
BEDROCK GRADING PLAN

GRADING AND DRAINAGE CERTIFICATION

I, JOSHUA J. LUTZ, NMPE 25526, OF THE FIRM BOHANNAN HUSTON, HEREBY CERTIFY UNITS 22-24 and 29-31 at BEDROCK, HAS BEEN GRADED AND WILL DRAIN IN SUBSTANTIAL COMPLIANCE WITH AND IN ACCORDANCE WITH THE DESIGN INTENT OF THE APPROVED GRADING AND DRAINAGE PLAN DATED 06/27/2024. THE RECORD INFORMATION EDITED ONTO THE ORIGINAL DESIGN DOCUMENT HAS BEEN PROVIDED BY BOTH BRIAN J. MARTINEZ, NMPS 18374, OF CARTESIAN SURVEYS FOR THE POND GRADES, AND BY ANDREW S. MEDINA, NMPS 12649, OF COMMUNITY SCIENCES CORPORATION. I FURTHER CERTIFY THAT I HAVE PERSONALLY VISITED THE PROJECT SITE 01/12/2026 AND HAVE DETERMINED BY VISUAL INSPECTION THAT THE DATA PROVIDED IS REPRESENTATIVE OF ACTUAL SITE CONDITIONS AND IS TRUE AND CORRECT TO THE BEST OF MY KNOWLEDGE AND BELIEF.

THE RECORD INFORMATION PRESENTED HEREON IS NOT NECESSARILY COMPLETE AND INTENDED ONLY TO VERIFY SUBSTANTIAL COMPLIANCE OF THE GRADING ASPECTS OF THIS PROJECT. THOSE RELYING ON THE RECORD DOCUMENT ARE ADVISED TO OBTAIN INDEPENDENT VERIFICATION OF ITS ACCURACY BEFORE USING IT FOR ANY OTHER PURPOSE.

Joshua J. Lutz
 01-12-2026
 DATE
 Joshua Lutz, NMPE 25526

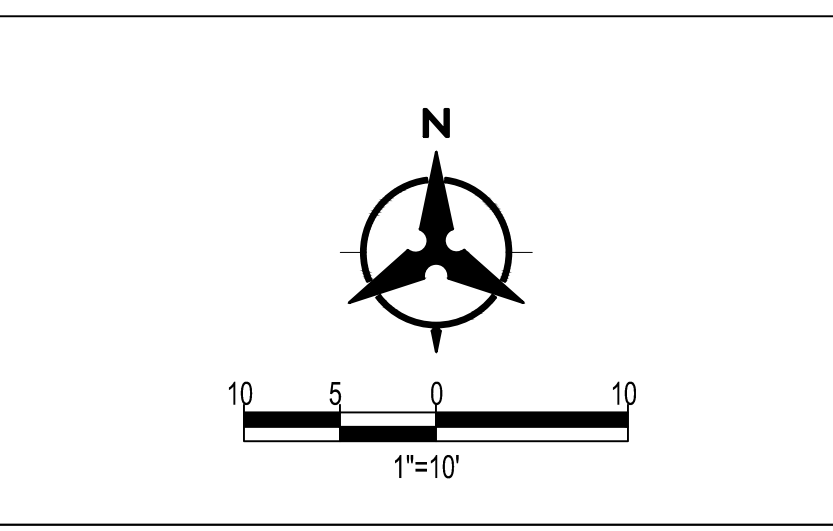


GRADING KEYED NOTES

- INSTALL STORM DRAIN PIPE. SEE PLAN FOR SIZE & SLOPE.
- CONSTRUCT 4' DIA TYPE "C" STORM DRAIN MANHOLE PER COA STD DWG 2208.
- CONSTRUCT 4' DIA TYPE "E" STORM DRAIN MANHOLE PER COA STD DWG 2209.
- CONSTRUCT TYPE "A" SINGLE GRATE STORM DRAIN INLET PER COA STD DWG 2201.
- CONSTRUCT 18" (UNLESS OTHERWISE NOTED) NYLOPLAST STORM DRAIN INLET WITH DOME GRATE.
- CONSTRUCT TYPE "C" SINGLE GRATE STORM DRAIN INLET PER COA STD DWG 2205.
- CONSTRUCT TYPE "D" SINGLE GRATE STORM DRAIN INLET PER COA STD DWG 2206.
- CONSTRUCT TYPE "A" DOUBLE GRATE STORM DRAIN INLET PER COA STD DWG 2201.
- INSTALL STORM DRAIN FLARED END SECTION. SIZE PER PLANS.
- INSTALL 2" CONCRETE CURB OPENING.
- INSTALL STAIRS. SEE STRUCTURAL DRAWINGS FOR DETAILS.
- INSTALL STAIRS PER TYPICAL SECTION. SEE SHEET C-218, DETAIL L.
- INSTALL PRE-MANUFACTURED STORM DRAIN FITTING. SIZE PER PLANS.
- INSTALL SIDEWALK CULVERT PER COA STD DWG 2236.
- INSTALL 8" DIAMETER PIPE CULVERT.
- CONNECT TO EXISTING INFRASTRUCTURE. CONTRACTOR TO VERIFY ELEVATION.
- 2X2 NYLOPLAST CURB INLET
- INSTALL 12" (UNLESS OTHERWISE NOTED) NYLOPLAST STORM DRAIN INLET WITH ADA RATED PEDESTRIAN GRATE.
- CONSTRUCT TYPE "D" DOUBLE GRATE STORM DRAIN INLET PER COA STD DWG 2206.
- INSTALL CONCRETE RUNDOWN PER DETAIL 1, SHEET C-218.
- INSTALL RIPRAP BLANKET PER DETAIL 2, SHEET C-218.

LEGEND

- PROPERTY LINE
- 5320 PROPOSED INDEX CONTOUR
- 5319 PROPOSED INTERMEDIATE CONTOUR
- 5320 EXISTING INDEX CONTOUR
- 5319 EXISTING INTERMEDIATE CONTOUR
- PROPOSED DRAINAGE SWALE
- DIRECTION OF FLOW
- WATER BLOCK/GRADE BREAK
- PROPOSED STORM DRAIN MANHOLE
- PROPOSED STORM DRAIN INLETS
- PROPOSED STORM DRAIN CAP
- PROPOSED WATER LINE
- PROPOSED SANITARY SEWER LINE
- PROPOSED WUA EASEMENT
- SLOPE BREAK
- RETAINING WALL
- PROPOSED STORM DRAIN EASEMENT
- BUILDING NUMBER



Bohannon Huston
 www.bhinc.com 800.877.5332

BEDROCK ENLARGED GRADING PLAN

BHI PROJECT NO. 20220473 DWG NO. C-216 SHEET 36 OF 55

BENCH MARKS		ENGINEER'S SEAL	
ALBUQUERQUE CONTROL SURVEY MONUMENT "UNION"			
GEOGRAPHIC POSITION (NAD 83)			
N.M. STATE PLANE COORDINATES (CENTRAL ZONE)			
N = 1,523,503.475 E = 1,483,655.030			
GROUND TO GRID FACTOR = 0.999864360			
DELTA ALPHA = 00° 16'58.96"			
ELEVATION = 5524.950 (NAVD 88)			

AS-BUILT INFORMATION	
BY	DATE
CONTRACTOR	DATE
WORK STAGED BY	DATE
INSPECTORS	DATE
APPROVED BY	DATE
FIELD VERIFICATION BY	DATE
DRAWINGS CORRECTED BY	DATE

REVISIONS	
NO.	DATE
2	09-05-24
4	03-07-25
	ASH004-VE EFFORTS
	ASH004-RETAINING WALLS AND GARAGE ELEVATIONS

DESIGN	
DESIGNED BY	DATE
JL	
CHECKED BY	DATE
JL	
DRAWN BY	DATE
AR	

Thu, 15-Jan-2026 - 3:54 pm, Plotted by: MGRREG
 P:\20220473\CDP\Plan\General\20220473GP16.dwg