

CITY OF ALBUQUERQUE

Planning Department
Alan Varela, Director



Mayor Timothy M. Keller

September 12, 2024

Josh Lutz, PE
Bohannon Huston
7500 Jefferson St. NE
Albuquerque, NM 87109

Re: Bedrock La Tierra Development
99999 Woodmont
Traffic Circulation Layout
Engineer's Stamp 09-10-24 (C09-D011B)

Dear Mr. Lutz,

The TCL submittal received 05-10-2024 is approved for Building Permit by Transportation. A copy of the stamped and signed plan will be needed for each of the building permit plans. Please keep the original to be used for certification of the site for final C.O. for Transportation.

PO Box 1293

Albuquerque

NM 87103

www.cabq.gov

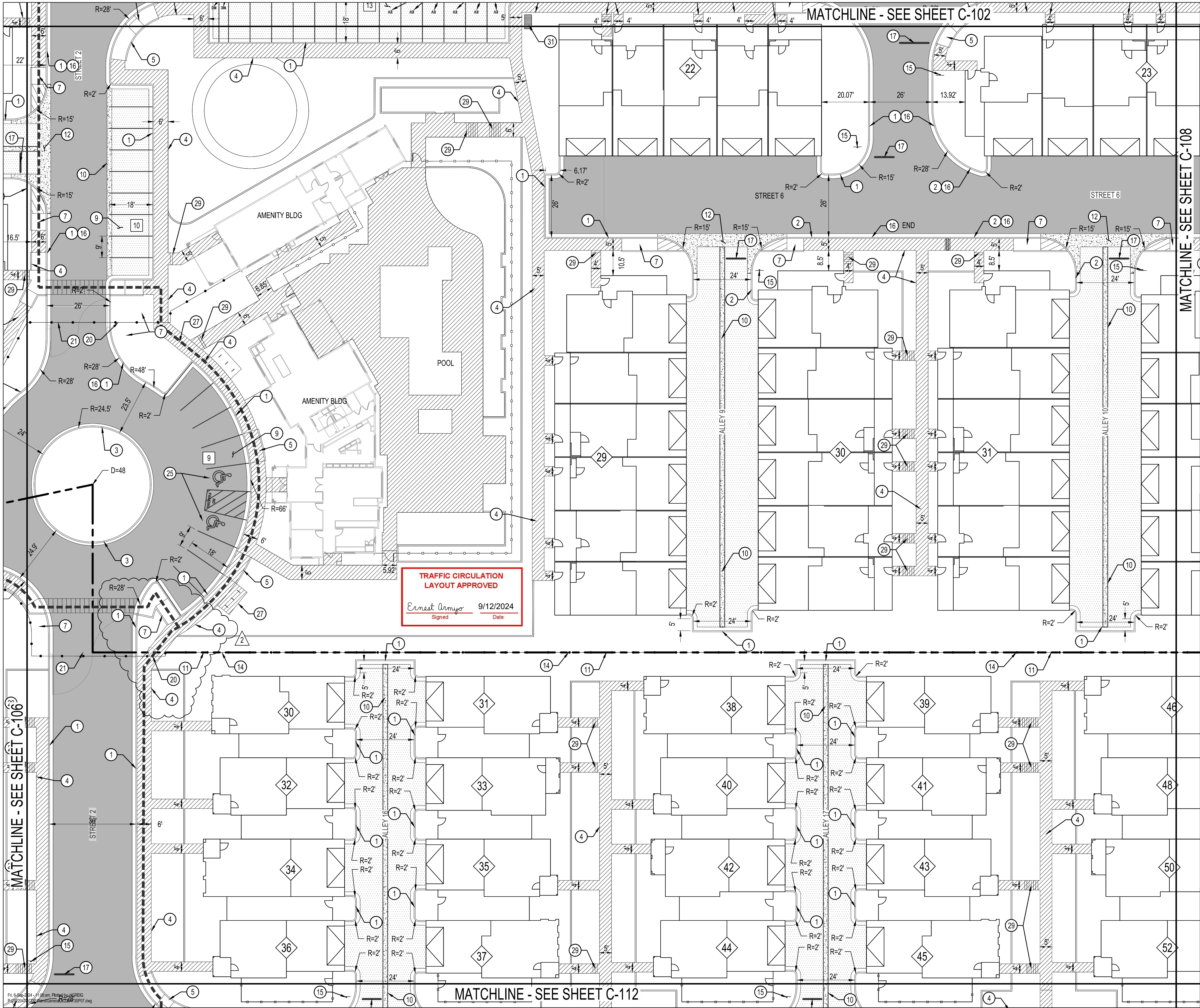
When the site construction is completed and an inspection for Certificate of Occupancy (C.O.) is requested, use the original City stamped approved TCL for certification. Redline any minor changes and adjustments that were made in the field. A NM registered architect or engineer must stamp, sign, and date the certification TCL along with indicating that the development was built in "substantial compliance" with the TCL. Submit this certification, the TCL, and a completed Drainage and Transportation Information Sheet to front counter personnel for log in and evaluation by Transportation. **AN APPROVED ACCEPTED WORK ORDER IS CONDITION OF RELEASING THE FINAL CO.**

Once verification of certification is completed and approved, notification will be made to Building Safety to issue Final C.O. To confirm that a final C.O. has been issued, call Building Safety at 924-3690.

Sincerely,

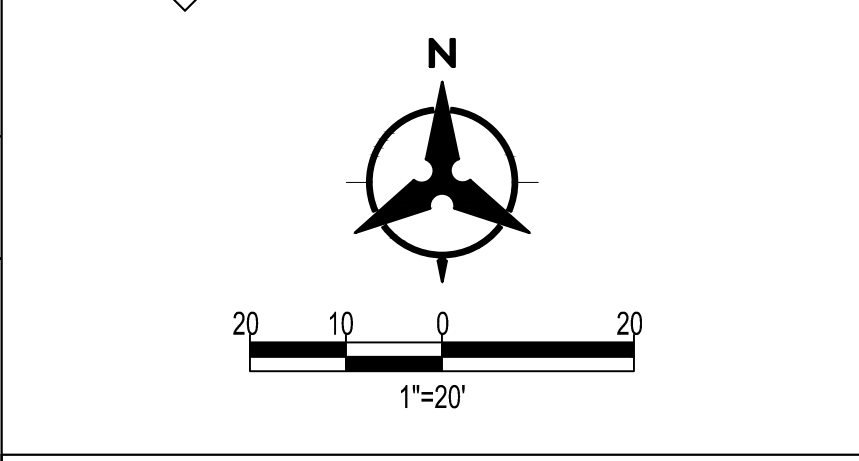
Ernest Armijo, P.E.
Principal Engineer, Planning Dept.
Development Review Services

C: CO Clerk, File



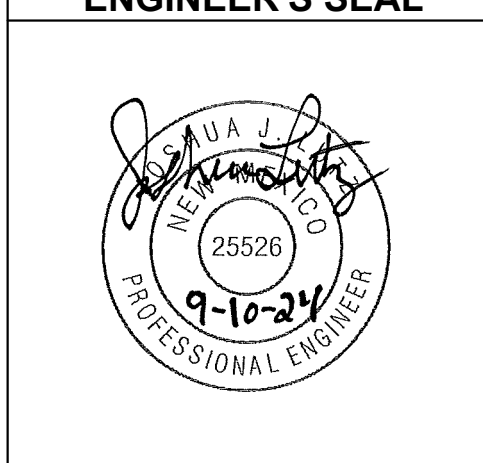
- ### SITE PLAN KEYED NOTES
- 6" STANDARD CURB AND GUTTER PER COA STD. DWG. 24015A.
 - 8" STANDARD CURB AND GUTTER PER COA STD. DWG. 24015A.
 - MEDIAN CURB AND GUTTER PER COA STD. DWG. 24015A.
 - CONCRETE SIDEWALK. WIDTH VARIES; SEE PLAN FOR DIMENSIONS. SEE DETAIL SHEET C-117.
 - ADA ACCESSIBLE CONCRETE CORNER ACCESS RAMP PER C.O.A. STD. DTL. 2441.
 - ADA ACCESSIBLE CONCRETE PERPENDICULAR CURB RAMP PER COA STD. DTL. 2442.
 - ADA ACCESSIBLE CONCRETE PARALLEL CURB RAMP PER COA STD. DTL. 2443.
 - ADA ACCESSIBLE CONCRETE COMBINATION CURB RAMP PER COA STD. DTL. 2444.
 - STANDARD PARKING, 9' X 18' UNLESS OTHERWISE NOTED. PAVEMENT MARKINGS ARE SHOWN FOR INFORMATION ONLY.
 - 2' ALLEY GUTTER PER COA STD DWG SEE DETAIL SHEET C-117
 - INSTALL FENCE. REFER TO LANDSCAPE DRAWINGS FOR DETAIL
 - VALLEY GUTTER PER COA STD. DWG. 2420.
 - 10' VALLEY GUTTER PER COA STD. DWG. 2420.
 - PROPERTY LINE
 - INSTALL STOP SIGN SEE DETAIL SHEET C-117.
 - PAINT CURB RED WITH "FIRE LANE" TEXT.
 - 24" SOLID WHITE RETROREFLECTIVE PAVEMENT STRIPE.
 - "NO PARKING DURING XX HOUR TO XX HOUR" SIGN. SIGN POST PER COA STD. DWG. 2600-702
 - ON STREET PARKING, 7' X 20' UNLESS OTHERWISE NOTED. PAVEMENT MARKINGS ARE SHOWN FOR INFORMATION ONLY.
 - PEDESTRIAN GATE. REFER TO LANDSCAPE PLANS FOR DETAILS.
 - VEHICULAR GATE. REFER TO LANDSCAPE PLANS FOR DETAILS.
 - 5' TRANSITION BETWEEN CURB TYPES.
 - MOUNTABLE CURB PER COA STD. DWG. 2415A.
 - 10' PUBLIC UTILITY EASEMENT
 - ADA ACCESS AISLE AND ADA "HANDICAP PARKING ONLY" SIGN. SEE DETAILS A AND B, SHEET C-116.
 - MOTORCYCLE PARKING AND MOTORCYCLE PARKING SIGN. SEE DETAILS C AND D, SHEET C-116.
 - BICYCLE RACK. SEE DETAIL E, SHEET C-116.
 - ELECTRIC VEHICLE PARKING
 - STAIRS. SEE STRUCTURAL PLAN FOR DETAILS. SEE GRADING PLAN FOR NUMBER OF STEPS.
 - INSTALL 2" WIDE CURB CUT PER DETAIL F, SHEET C-116.
 - INSTALL MAILBOX PER GANNON DESIGN DRAWINGS.
 - BUILD REFUSE ENCLOSURE PER DETAIL SHEET C-117.

- ### LEGEND
- HEAVY DUTY ASPHALT PAVEMENT PER DETAIL G, SHEET C-116
 - LIGHT DUTY ASPHALT PAVEMENT PER DETAIL H, SHEET C-116
 - CONCRETE SIDEWALK
 - CONCRETE VALLEY GUTTER
 - CROSS WALK
 - MAILBOXES
 - PROPERTY LINE
 - PROPOSED CURB & GUTTER
 - PHASE BOUNDARY
 - FENCE
 - XX NUMBER OF PARKING STALLS
 - ADA ACCESSIBLE ROUTE
 - # BUILDING NUMBER

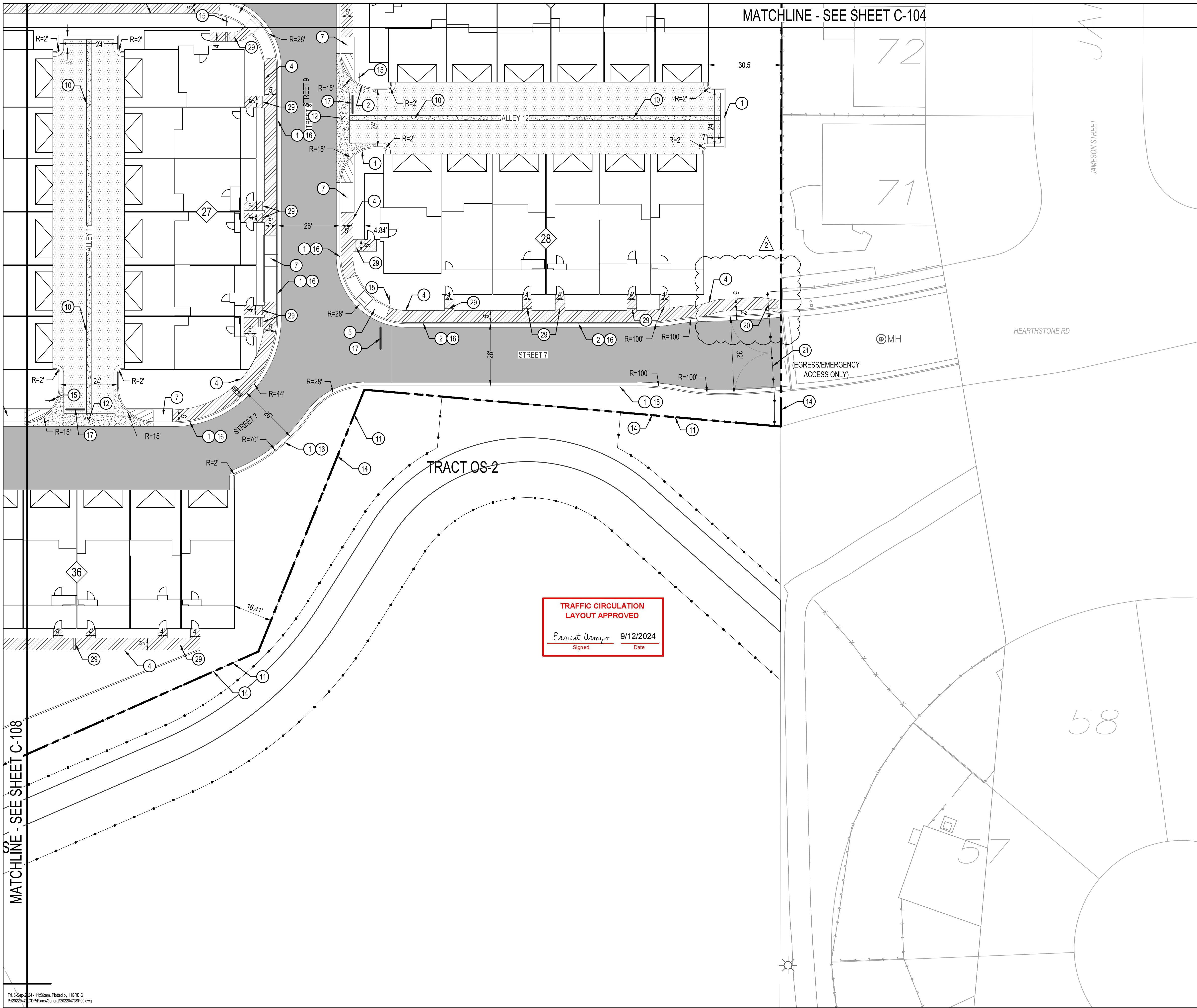


Bohannon & Huston
www.bhinc.com 800.877.5332

BENCH MARKS	
ALBUQUERQUE CONTROL SURVEY MONUMENT "UNION"	
GEOGRAPHIC POSITION (NAD 83)	
N.M. STATE PLANE COORDINATES (CENTRAL ZONE)	
N = 1,523,503.475 E = 1,483,655.030	
GROUND TO GRD FACTOR = 0.999864360	
DELTA ALPHA = 00° 16'38.96"	
ELEVATION = 5524.950 (NAVD 88)	
ENGINEER'S SEAL	



AS-BUILT INFORMATION		REVISIONS		DESIGN	
BY	DATE	NO.	DATE	DESIGNED BY	CHECKED BY
HG	09-05-24	2	09-05-24	JL	KLD
CONTRACTOR	WORK	DATE	DATE	DRAWN BY	
				AR	



- SITE PLAN KEYED NOTES**
- 6" STANDARD CURB AND GUTTER PER COA STD. DWG. 24015A.
 - 8" STANDARD CURB AND GUTTER PER COA STD. DWG. 24015A.
 - MEDIAN CURB AND GUTTER PER COA STD. DWG. 24015A.
 - CONCRETE SIDEWALK. WIDTH VARIES; SEE PLAN FOR DIMENSIONS. SEE DETAIL SHEET C-117.
 - ADA ACCESSIBLE CONCRETE CORNER ACCESS RAMP PER C.O.A. STD. DTL. 2441.
 - ADA ACCESSIBLE CONCRETE PERPENDICULAR CURB RAMP PER COA STD. DTL. 2442.
 - ADA ACCESSIBLE CONCRETE PARALLEL CURB RAMP PER COA STD. DTL. 2443.
 - ADA ACCESSIBLE CONCRETE COMBINATION CURB RAMP PER COA STD. DTL. 2444.
 - STANDARD PARKING, 9' X 18' UNLESS OTHERWISE NOTED. PAVEMENT MARKINGS ARE SHOWN FOR INFORMATION ONLY.
 - 2' ALLEY GUTTER PER COA STD DWG SEE DETAIL SHEET C-117
 - INSTALL FENCE, REFER TO LANDSCAPE DRAWINGS FOR DETAIL
 - VALLEY GUTTER PER COA STD. DWG. 2420.
 - 10' VALLEY GUTTER PER COA STD. DWG. 2420.
 - PROPERTY LINE
 - INSTALL STOP SIGN SEE DETAIL SHEET C-117.
 - PAINT CURB RED WITH "FIRE LANE" TEXT.
 - 24" SOLID WHITE RETROREFLECTIVE PAVEMENT STRIPE.
 - "NO PARKING DURING XX HOUR TO XX HOUR" SIGN. SIGN POST PER COA STD. DWG. 2600-702
 - ON STREET PARKING, 7' X 20' UNLESS OTHERWISE NOTED. PAVEMENT MARKINGS ARE SHOWN FOR INFORMATION ONLY.
 - PEDESTRIAN GATE. REFER TO LANDSCAPE PLANS FOR DETAILS.
 - VEHICULAR GATE. REFER TO LANDSCAPE PLANS FOR DETAILS.
 - 5' TRANSITION BETWEEN CURB TYPES.
 - MOUNTABLE CURB PER COA STD. DWG. 2415A.
 - 10' PUBLIC UTILITY EASEMENT
 - ADA ACCESS AISLE AND ADA "HANDICAP PARKING ONLY" SIGN. SEE DETAILS A AND B, SHEET C-116.
 - MOTORCYCLE PARKING AND MOTORCYCLE PARKING SIGN. SEE DETAILS C AND D, SHEET C-116.
 - BICYCLE RACK. SEE DETAIL E, SHEET C-116.
 - ELECTRIC VEHICLE PARKING
 - STAIRS. SEE STRUCTURAL PLAN FOR DETAILS. SEE GRADING PLAN FOR NUMBER OF STEPS.
 - INSTALL 2" WIDE CURB CUT PER DETAIL F, SHEET C-116.
 - INSTALL MAILBOX PER GANNON DESIGN DRAWINGS.
 - BUILD REFUSE ENCLOSURE PER DETAIL SHEET C-117.

LEGEND

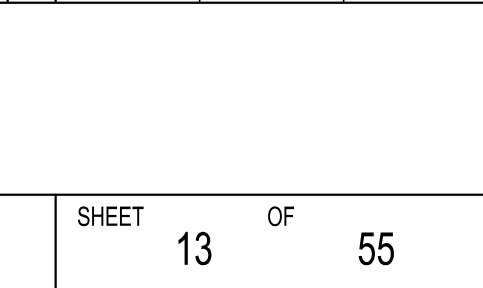
	HEAVY DUTY ASPHALT PAVEMENT PER DETAIL G, SHEET C-116
	LIGHT DUTY ASPHALT PAVEMENT PER DETAIL H, SHEET C-116
	CONCRETE SIDEWALK
	CONCRETE VALLEY GUTTER
	CROSS WALK
	MAILBOXES
	PROPERTY LINE
	PROPOSED CURB & GUTTER
	PHASE BOUNDARY
	FENCE
	NUMBER OF PARKING STALLS
	ADA ACCESSIBLE ROUTE
	BUILDING NUMBER

Bohannon & Huston
www.bhinc.com 800.877.5332

BEDROCK SITE PLAN

BHI PROJECT NO.	20220473	DWG NO.	C-109	SHEET	10	OF	55
-----------------	----------	---------	-------	-------	----	----	----

BENCH MARKS		ENGINEER'S SEAL				
ALBUQUERQUE CONTROL SURVEY MONUMENT "UNION"						
GEOGRAPHIC POSITION (NAD 83)						
N.M. STATE PLANE COORDINATES (CENTRAL ZONE)						
N = 1,523,503.475 E = 1,483,655.030						
GROUND TO GRD FACTOR = 0.999864360						
DELTA ALPHA = 00° 16'38.96"						
ELEVATION = 5524.950 (NAVD 88)						
AS-BUILT INFORMATION		REVISIONS				
BY	DATE	NO.	DATE	DESIGNED BY	CHECKED BY	DRAWN BY
HG		2	09-05-24	JL	JL	AR
CONTRACTOR						
WORK STARTED BY						
INSPECTORS						
ACCEPTANCE BY						
FIELD VERIFICATION BY						
DRAWINGS CORRECTED BY						



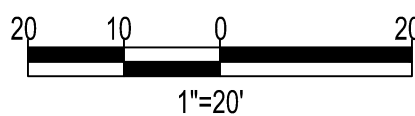
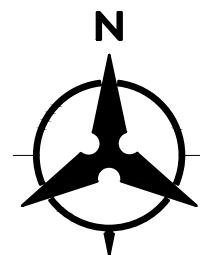
Thu, 5 Sep 2024 - 4:55 pm, Plotted by: HGREIG
P:\2022047\CDPIPlans\General\2022047SSP12.dwg

MATCHLINE - SEE SHEET C-110

MATCHLINE - SEE SHEET C-111

- 6" STANDARD CURB AND GUTTER PER COA STD. DWG. 24015A.
- 8" STANDARD CURB AND GUTTER PER COA STD. DWG. 24015A.
- MEDIAN CURB AND GUTTER PER COA STD. DWG. 24015A.
- CONCRETE SIDEWALK. WIDTH VARIES; SEE PLAN FOR DIMENSIONS. SEE DETAIL SHEET C-117.
- ADA ACCESSIBLE CONCRETE CORNER ACCESS RAMP PER C.O.A. STD. DTL. 2441.
- ADA ACCESSIBLE CONCRETE PERPENDICULAR CURB RAMP PER COA STD. DTL. 2442.
- ADA ACCESSIBLE CONCRETE PARALLEL CURB RAMP PER COA STD. DTL. 2443.
- ADA ACCESSIBLE CONCRETE COMBINATION CURB RAMP PER COA STD. DTL. 2444.
- STANDARD PARKING, 9' X 18' UNLESS OTHERWISE NOTED. PAVEMENT MARKINGS ARE SHOWN FOR INFORMATION ONLY.
- 2' ALLEY GUTTER PER COA STD DWG SEE DETAIL SHEET C-117
- INSTALL FENCE. REFER TO LANDSCAPE DRAWINGS FOR DETAIL
- VALLEY GUTTER PER COA STD. DWG. 2420.
- 10' VALLEY GUTTER PER COA STD. DWG. 2420.
- PROPERTY LINE
- INSTALL STOP SIGN SEE DETAIL SHEET C-117.
- PAINT CURB RED WITH "FIRE LANE" TEXT.
- 24" SOLID WHITE RETROREFLECTIVE PAVEMENT STRIPE.
- "NO PARKING DURING XX HOUR TO XX HOUR" SIGN. SIGN POST PER COA STD. DWG. 2600-702
- ON STREET PARKING, 7' x 20' UNLESS OTHERWISE NOTED. PAVEMENT MARKINGS ARE SHOWN FOR INFORMATION ONLY.
- PEDESTRIAN GATE. REFER TO LANDSCAPE PLANS FOR DETAILS.
- VEHICULAR GATE. REFER TO LANDSCAPE PLANS FOR DETAILS.
- 5' TRANSITION BETWEEN CURB TYPES.
- MOUNTABLE CURB PER COA STD. DWG. 2415A.
- 10' PUBLIC UTILITY EASEMENT
- ADA ACCESS AISLE AND ADA "HANDICAP PARKING ONLY" SIGN. SEE DETAILS A AND B, SHEET C-116.
- MOTORCYCLE PARKING AND MOTORCYCLE PARKING SIGN. SEE DETAILS C AND D, SHEET C-116.
- BICYCLE RACK. SEE DETAIL E, SHEET C-116.
- ELECTRIC VEHICLE PARKING
- STAIRS. SEE STRUCTURAL PLAN FOR DETAILS. SEE GRADING PLAN FOR NUMBER OF STEPS.
- INSTALL 2" WIDE CURB CUT PER DETAIL F, SHEET C-116.
- INSTALL MAILBOX PER GANNON DESIGN DRAWINGS.
- BUILD REFUSE ENCLOSURE PER DETAIL SHEET C-117.

- HEAVY DUTY ASPHALT PAVEMENT
PER DETAIL G, SHEET C-116
- LIGHT DUTY ASPHALT PAVEMENT PER
DETAIL H, SHEET C-116
- CONCRETE SIDEWALK
- CONCRETE VALLEY GUTTER
- CROSS WALK
- MAILBOXES
- PROPERTY LINE
- PROPOSED CURB & GUTTER
- PHASE BOUNDARY
- FENCE
- XX
NUMBER OF PARKING STALLS
- ADA ACCESSIBLE ROUTE
- #
BUILDING NUMBER



Bohannon **Huston**
www.bhinc.com 800.877.5332

**BEDROCK
SITE PLAN**

BHI PROJECT NO. 20220473 DWG NO. C-114 SHEET 15 OF 55

BENCH MARKS

ALBUQUERQUE CONTROL SURVEY MONUMENT "UNION"

GEOGRAPHIC POSITION (NAD 83)

N.M. STATE PLANE COORDINATES (CENTRAL ZONE)

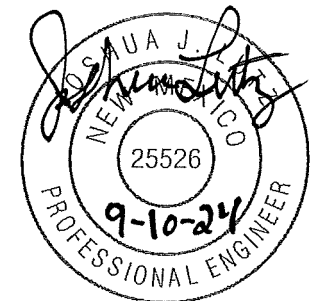
N = 1,523,503.476 E = 1,483,655.030

GROUND TO GRD FACTOR = 0.999864360

DELTA ALPHA = 00° 16'58.96"

ELEVATION = 5524.950 (NAVD 88)

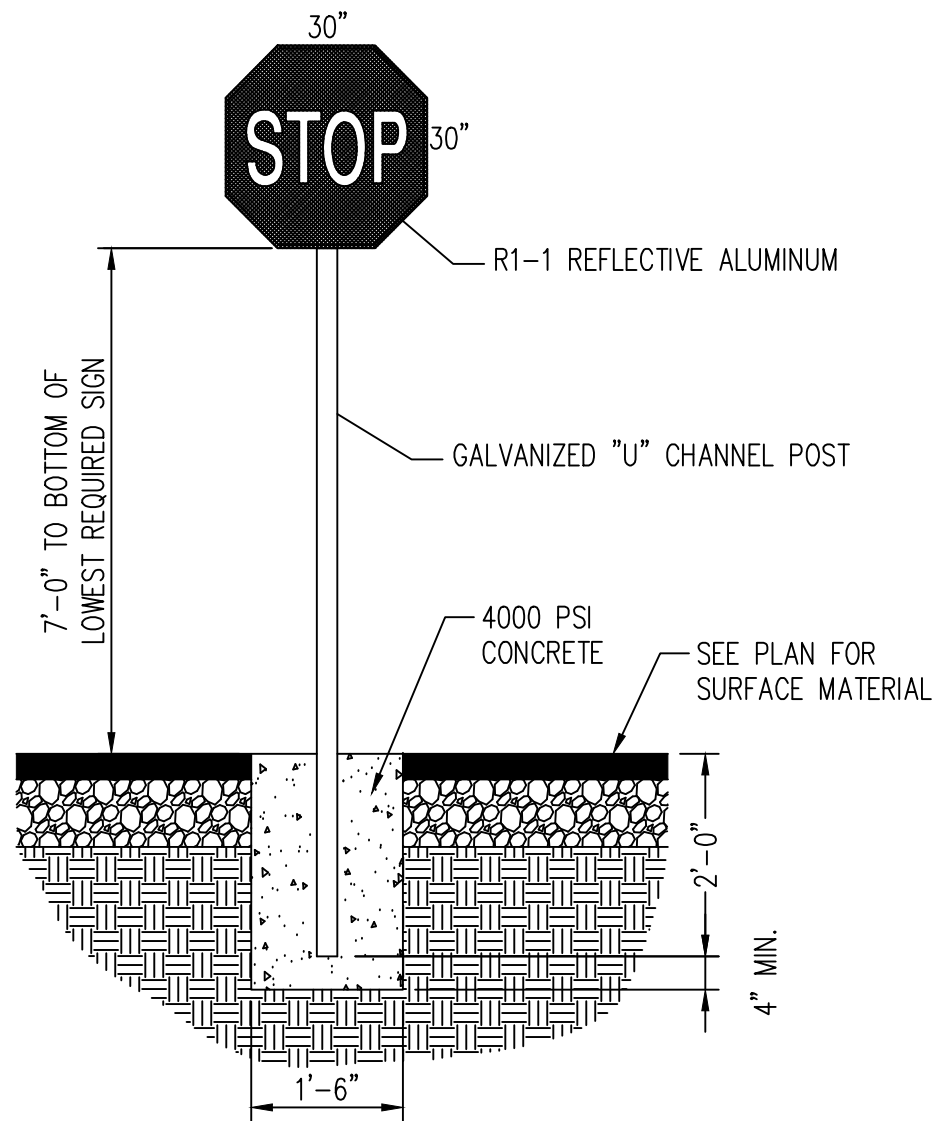
ENGINEER'S SEAL



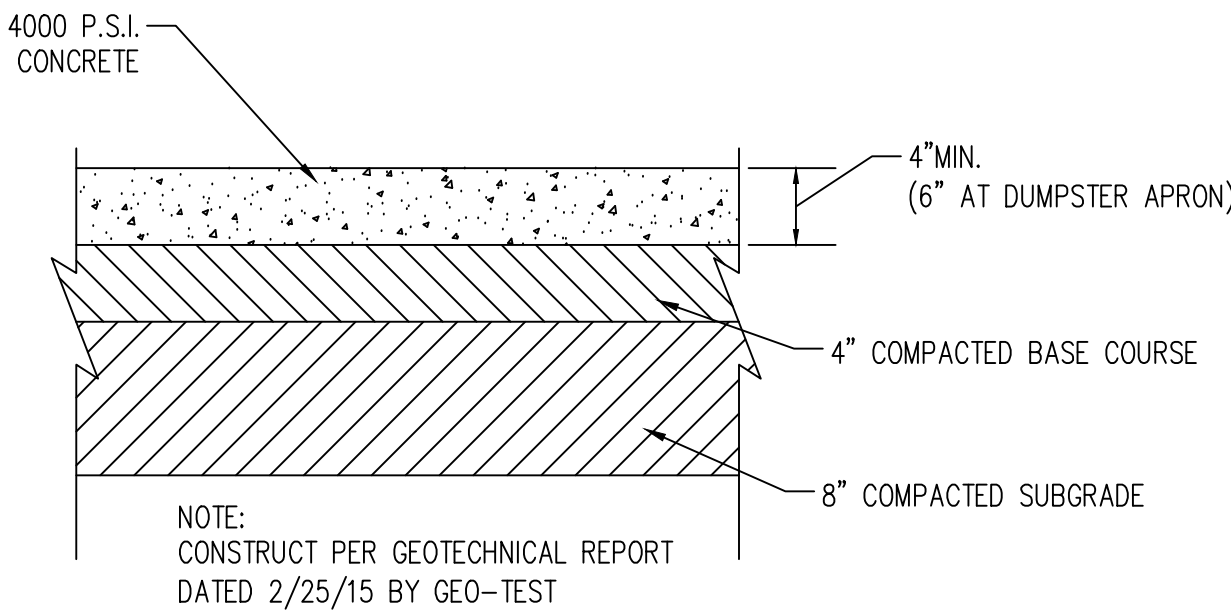
AS-BUILT INFORMATION		REVISIONS		DESIGN	
BY	DATE	NO.	DATE	DESIGNED BY	DRAWN BY
HG		2	09-05-24	JL	AR
WORK				CHECKED BY	
INSPECTORS					
ACCEPTANCE BY					
FIELD					
VERIFICATION BY					
DRAWINGS					
CORRECTED BY					

**TRAFFIC CIRCULATION
LAYOUT APPROVED**

Ernest Arroyo 9/12/2024
Signed Date



STOP SIGN DETAIL
N.T.S.

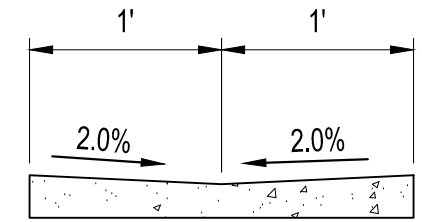
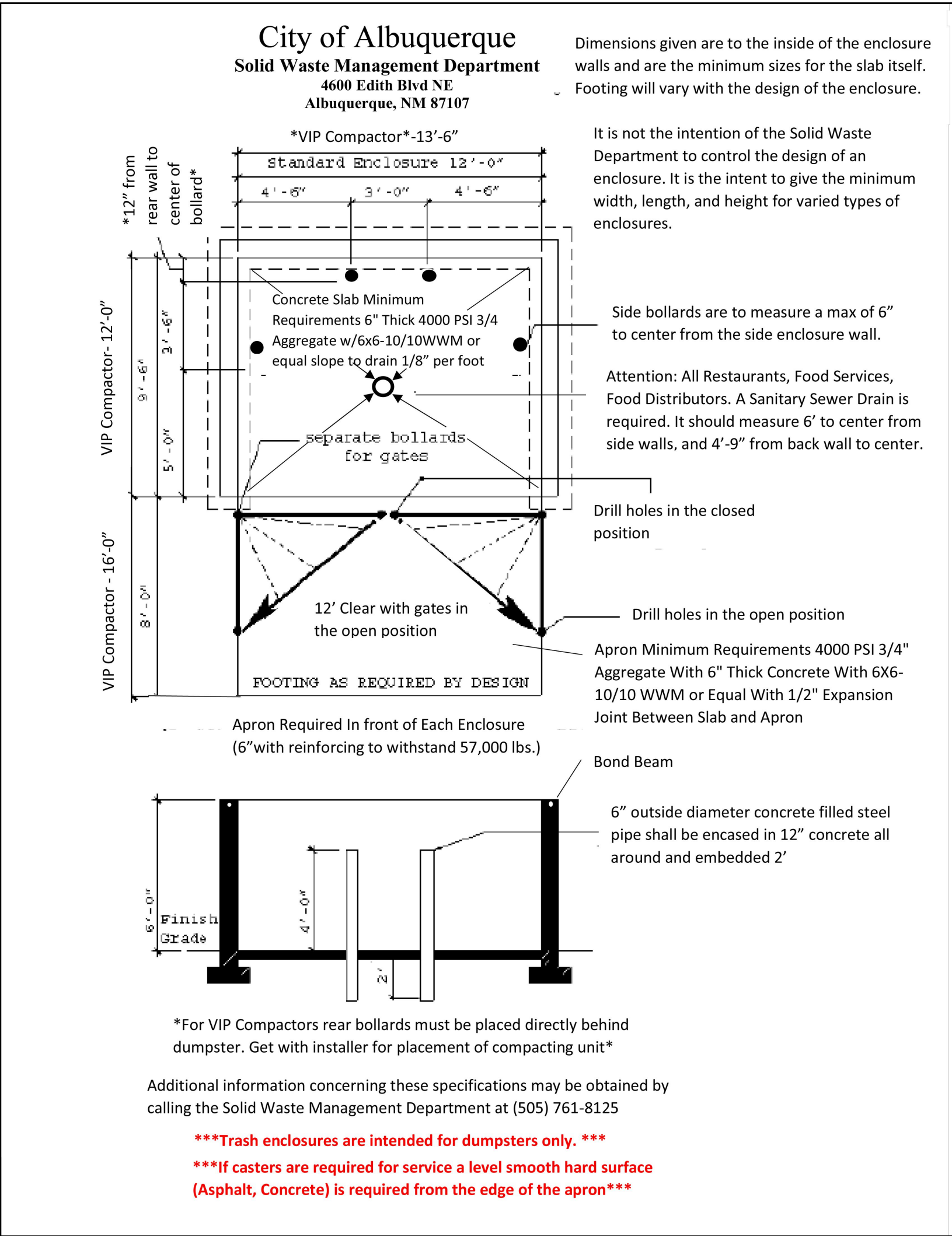


- ① CONTRACTION JOINTS SPACE TO BE EQUAL TO SIDEWALK WIDTH
② EXPANSION JOINTS 50' O/C MAX.
③ ALL JOINTS SEALED

SIDEWALK & CONCRETE SURFACE DETAIL
N.T.S.

TRAFFIC CIRCULATION
LAYOUT APPROVED

Ernest Arroyo 9/12/2024
Signed Date



VALLEY GUTTER SLOPE DETAIL
NOT TO SCALE

Bohannon & Huston
www.bhinc.com 800.877.5332

BEDROCK
SITE PLAN DETAILS

BHI PROJECT NO. 20220473 DWG NO. C-117 SHEET 18 OF 55

DESIGN		REVISIONS		AS-BUILT INFORMATION	
NO.	DATE	BY	DATE	CONTRACTOR	DATE
2	09-05-24	HG		ASH-002 VE EFFORTS	
				WORK STARTED BY	DATE
				INSPECTORS	DATE
				ACCEPTANCE BY	DATE
				FIELD VERIFICATION BY	DATE
				DRAWINGS CORRECTED BY	DATE



ENGINEER'S SEAL

BENCH MARKS	
ALBUQUERQUE CONTROL SURVEY MONUMENT "UNION"	
GEOGRAPHIC POSITION (NAD 83)	
N.M. STATE PLANE COORDINATES (CENTRAL ZONE)	
N = 1,523,503.475 E = 1,493,655.030	
GROUND TO GRD FACTOR = 0.999664360	
DELTA ALPHA = 00° 16'58.96"	
ELEVATION = 5524.950 (NAVD 88)	