

LEGEND

PROJECT BOUNDARY
EXISTING CONTOUR
EXISTING SPOT ELEVATION
PROPOSED SPOT ELEVATION
DIRECTION OF FLOW
BASIN BOUNDARY
SUB-BASIN BOUNDARY
PROPOSED RETAINING WALL
EXISTING STORM DRAIN LINE
EXISTING STORM DRAIN MANHOLE
EXISTING STORM DRAIN INLET
PROPOSED STORM DRAIN LINE
PROPOSED STORM DRAIN MANHOLE
PROPOSED STORM DRAIN INLET
STREET FLOW
PIPE FLOW
SHEET FLOW
EROSION CONTROL BERM
ROLL CURB

EROSION CONTROL PLAN:

THE CONTRACTOR SHALL ENSURE THAT NO SOIL ERODES FROM THE LOTS INTO PUBLIC RIGHT-OF-WAY. THIS CAN BE ACHIEVED BY CONSTRUCTING TEMPORARY EROSION CONTROL BERMS AS PER DETAIL. THIS SHEET AND WETTING THE SOIL REGULARLY TO KEEP IT FROM BLOWING. IN ADDITION, THE CONTRACTOR SHALL RESEED ALL DISTURBED AREAS WITH AMAFA'S PIEDRAS MARCADAS DAM BASIN ACCORDING TO CITY STANDARD REVEGETATION SPECIFICATIONS

EROSION CONTROL PLAN

NO SCALE

A BERM WITH THE DIMENSIONS SHOWN SHALL BE MAINTAINED DURING CONSTRUCTION UNTIL COMPLETION OF INDIVIDUAL HOMES WITHIN THE PROJECT.

GENERAL GRADING NOTES:

- THE CONTRACTOR MUST OBTAIN A TOPSOIL DISTURBANCE PERMIT FROM THE CITY OF ALBUQUERQUE, ENVIRONMENTAL HEALTH DIVISION, PRIOR TO CONSTRUCTION.
- THE CONTRACTOR IS TO REFER TO THE EARTHWORK SPECIFICATIONS NOTED WITHIN THE GEOTECHNICAL INVESTIGATION REPORT PREPARED BY VINYARD AND ASSOCIATES, DATED JUNE 16, 1993, AND SUPPLIED BY THE OWNER.
- THE CONTRACTOR SHALL CONFORM TO ALL CITY, COUNTY, STATE AND FEDERAL DUST CONTROL MEASURES AND REQUIREMENTS AND WILL BE RESPONSIBLE FOR PREPARING AND OBTAINING ALL NECESSARY APPLICATIONS, PERMITS AND APPROVALS.

AS BUILT INFORMATION

CONTRACTOR
DATE
STATION
BY
DATE
FIELD
DATE
CORRECTED BY
DATE
MICRO-FILM INFORMATION
RECORDED BY
DATE

BENCH MARKS

STATION MARK IS A STANDARD USCGA'S BRASS TABLET, STAMPED "HUGHES, 1954", SET IN TOP OF A CONCRETE POST PROJECTING 0.3 FT. ABOVE THE GROUND. TO REACH THE STATION FROM THE INTERSECTION OF CENTRAL AVE. AND STATE RD. 448. GO NORTH ON STATE RD. 448. 6.1 MILES. THE STATION IS 450' WEST OF STATE RD. 448 IN A FENCED-IN PRAIRIE. ELEV. = 5049.93

SURVEY INFORMATION

FIELD NOTES
NO.
DATE
BY

ENGINEER'S SEAL

REMARKS
NO.
DATE
DESIGNED BY
DRAWN BY
CHECKED BY

APPROVALS

| APPROVALS | ENGINEER | DATE | APPROVALS | ENGINEER | DATE |
|--------------|----------|------|-------------|----------|------|
| DRC CHAIRMAN | | | WATER | | |
| TRANS. DEV. | | | WASTE WATER | | |
| HYDROLOGY | | | | | |

PROJECT
NO. XXXX.XX

MAP
C-12
NO. D-12

SHEET
2 OF 4

PROJECT BOUNDARY
EXISTING CONTOUR
EXISTING SPOT ELEVATION
PROPOSED SPOT ELEVATION
DIRECTION OF FLOW
BASIN BOUNDARY
SUB-BASIN BOUNDARY
PROPOSED RETAINING WALL
EXISTING STORM DRAIN LINE
EXISTING STORM DRAIN MANHOLE
EXISTING STORM DRAIN INLET
PROPOSED STORM DRAIN LINE
PROPOSED STORM DRAIN MANHOLE
PROPOSED STORM DRAIN INLET
STREET FLOW
PIPE FLOW
SHEET FLOW
EROSION CONTROL BERM
ROLL CURB

EROSION CONTROL PLAN:

THE CONTRACTOR SHALL ENSURE THAT NO SOIL ERODES FROM THE LOTS INTO PUBLIC RIGHT-OF-WAY. THIS CAN BE ACHIEVED BY CONSTRUCTING TEMPORARY EROSION CONTROL BERMS AS PER DETAIL. THIS SHEET AND WETTING THE SOIL REGULARLY TO KEEP IT FROM BLOWING. IN ADDITION, THE CONTRACTOR SHALL RESEED ALL DISTURBED AREAS WITH AMAFA'S PIEDRAS MARCADAS DAM BASIN ACCORDING TO CITY STANDARD REVEGETATION SPECIFICATIONS

EROSION CONTROL PLAN

NO SCALE

A BERM WITH THE DIMENSIONS SHOWN SHALL BE MAINTAINED DURING CONSTRUCTION UNTIL COMPLETION OF INDIVIDUAL HOMES WITHIN THE PROJECT.

GENERAL GRADING NOTES:

- THE CONTRACTOR MUST OBTAIN A TOPSOIL DISTURBANCE PERMIT FROM THE CITY OF ALBUQUERQUE, ENVIRONMENTAL HEALTH DIVISION, PRIOR TO CONSTRUCTION.
- THE CONTRACTOR IS TO REFER TO THE EARTHWORK SPECIFICATIONS NOTED WITHIN THE GEOTECHNICAL INVESTIGATION REPORT PREPARED BY VINYARD AND ASSOCIATES, DATED JUNE 16, 1993, AND SUPPLIED BY THE OWNER.
- THE CONTRACTOR SHALL CONFORM TO ALL CITY, COUNTY, STATE AND FEDERAL DUST CONTROL MEASURES AND REQUIREMENTS AND WILL BE RESPONSIBLE FOR PREPARING AND OBTAINING ALL NECESSARY APPLICATIONS, PERMITS AND APPROVALS.

AS BUILT INFORMATION

CONTRACTOR
DATE
STATION
BY
DATE
FIELD
DATE
CORRECTED BY
DATE
MICRO-FILM INFORMATION
RECORDED BY
DATE

BENCH MARKS

STATION MARK IS A STANDARD USCGA'S BRASS TABLET, STAMPED "HUGHES, 1954", SET IN TOP OF A CONCRETE POST PROJECTING 0.3 FT. ABOVE THE GROUND. TO REACH THE STATION FROM THE INTERSECTION OF CENTRAL AVE. AND STATE RD. 448. GO NORTH ON STATE RD. 448. 6.1 MILES. THE STATION IS 450' WEST OF STATE RD. 448 IN A FENCED-IN PRAIRIE. ELEV. = 5049.93

SURVEY INFORMATION

FIELD NOTES
NO.
DATE
BY

ENGINEER'S SEAL

REMARKS
NO.
DATE
DESIGNED BY
DRAWN BY
CHECKED BY

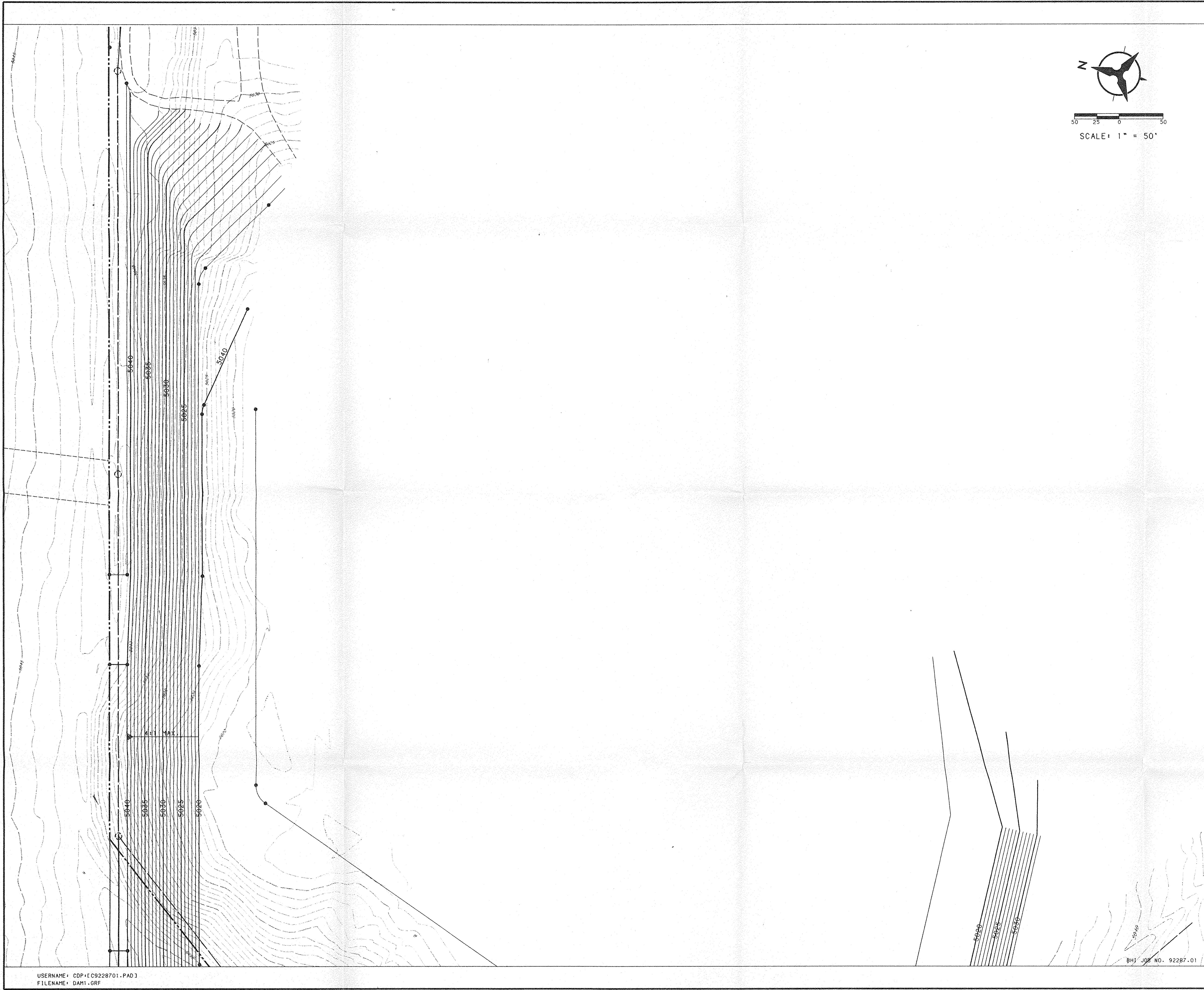
APPROVALS

| APPROVALS | ENGINEER | DATE | APPROVALS | ENGINEER | DATE |
|--------------|----------|------|-------------|----------|------|
| DRC CHAIRMAN | | | WATER | | |
| TRANS. DEV. | | | WASTE WATER | | |
| HYDROLOGY | | | | | |

PROJECT
NO. XXXX.XX

MAP
C-12
NO. D-12

SHEET
2 OF 4



| LEGEND | |
|-------------------------------------|-------------------------|
| PROJECT BOUNDARY | --- |
| EXISTING CONTOUR | --- |
| EXISTING SPOT ELEVATION | ○ 19.25 |
| PROPOSED SPOT ELEVATION | ● 05.70 |
| DIRECTION OF FLOW | S+2.564Z |
| BASIN BOUNDARY | --- |
| SUB-BASIN BOUNDARY | --- |
| PROPOSED RETAINING WALL | --- |
| EXISTING STORM DRAIN LINE | SD |
| EXISTING STORM DRAIN MANHOLE | ⊙ |
| PROPOSED STORM DRAIN LINE | SD |
| PROPOSED STORM DRAIN MANHOLE | ⊙ |
| PROPOSED STORM DRAIN INLET | ⊙ |
| STREET FLOW | Q _s = 5.0CFS |
| PIPE FLOW | Q _p = 5.0CFS |
| SHEET FLOW | Q = 5.5CFS |
| *ALL FLOWS SHOWN ARE 100 YEAR EVENT | |

| EROSION CONTROL PLAN: | |
|--|--|
| THE CONTRACTOR SHALL ENSURE THAT NO SOIL ERODES FROM THE LOTS INTO PUBLIC RIGHT-OF-WAY. THIS CAN BE ACHIEVED BY CONSTRUCTING TEMPORARY EROSION CONTROL BERMS AS PER DETAIL THIS SHEET AND WETTING THE SOIL REGULARLY TO KEEP IT FROM BLOWING. IN ADDITION, THE CONTRACTOR SHALL RESEED ALL DISTURBED AREAS WITHIN AMAFCA'S PIEDRAS MARCADAS DAM BASIN ACCORDING TO CITY STANDARD REVEGETATION SPECIFICATIONS | |

| EROSION CONTROL PLAN | |
|---|--|
| NO SCALE | |
| A BERM WITH THE DIMENSIONS SHOWN SHALL BE MAINTAINED DURING CONSTRUCTION UNTIL COMPLETION OF INDIVIDUAL HOMES WITHIN THE PROJECT. | |

| GENERAL GRADING NOTES: | |
|--|--|
| 1. THE CONTRACTOR MUST OBTAIN A TOPSOIL DISTURBANCE PERMIT FROM THE CITY OF ALBUQUERQUE, ENVIRONMENTAL HEALTH DIVISION, PRIOR TO CONSTRUCTION. | |
| 2. THE CONTRACTOR IS TO REFER TO THE EARTHWORK SPECIFICATIONS NOTED WITHIN THE GEOTECHNICAL INVESTIGATION REPORT PREPARED BY VINYARD AND ASSOCIATES, DATED JUNE 16, 1993, AND SUPPLIED BY THE OWNER. | |
| 3. THE CONTRACTOR SHALL CONFORM TO ALL CITY, COUNTY, STATE AND FEDERAL DUST CONTROL MEASURES AND REQUIREMENTS AND WILL BE RESPONSIBLE FOR PREPARING AND OBTAINING ALL NECESSARY APPLICATIONS, PERMITS AND APPROVALS. | |

| APPROVED FOR ROUGH GRADING (± 1') | |
|-----------------------------------|------|
| A.M.A.F.C.A. | DATE |
| APPROVED FOR ROUGH GRADING (± 1') | |

| HYDROLOGY ENGINEER | |
|--------------------|--|
| DATE | |

| CITY OF ALBUQUERQUE | |
|-------------------------------------|--|
| PUBLIC WORKS DEPARTMENT | |
| ENGINEERING GROUP | |
| RANCHO SERENO SUBDIVISION - UNIT II | |
| PRELIMINARY GRADING & DRAINAGE PLAN | |
| PIEDRAS MARCADAS DAM BASIN | |

| APPROVALS | ENGINEER | DATE | APPROVALS | ENGINEER | DATE |
|--------------|----------|------|-------------|----------|------|
| DRC CHAIRMAN | | | WATER | | |
| TRANS. DEV. | | | WASTE WATER | | |
| HYDROLOGY | | | | | |

| PROJECT NO. | MAP C-12 NO. D-12 | SHEET 4 OF 4 |
|-------------|-------------------|--------------|
| XXXX.XX | | |

| AS BUILT INFORMATION | |
|----------------------|------|
| CONTRACTOR | DATE |
| INSPECTOR'S | DATE |
| FIELD FORCE BY | DATE |
| VERIFICATION BY | DATE |
| CORRECTED BY | DATE |
| RECORDED BY | DATE |
| NO. | NO. |

| BENCH MARKS | |
|--|-----------------|
| STATION MARK IS A STANDARD USC&GS BRASS TABLET, STAMPED "HUGHES, 1954", SET IN TOP OF A CONCRETE POST PROJECTING 0.3 FT. ABOVE THE GROUND. TO REACH THE STATION FROM THE INTERSECTION OF CENTRAL AVE. AND STATE RD. 448, GO NORTH ON STATE RD. 448, 6.1 MILES. THE STATION IS 450' WEST OF STATE RD. 448 IN A FENCED-IN PRAIRIE. | ELEV. = 5049.93 |

| SURVEY INFORMATION | |
|--------------------|------|
| FIELD NOTES | DATE |
| BY | |
| NO. | |

| ENGINEER'S SEAL | |
|----------------------------------|--|
| REGISTERED PROFESSIONAL ENGINEER | |
| 6-2-93 | |

| REVISIONS | |
|------------|-----------|
| REMARKS | BY |
| DESIGN | DATE 6/93 |
| DRAWN BY | DATE 6/93 |
| CHECKED BY | DATE 6/93 |

| DESIGNED BY | |
|-------------|-----------|
| KLD | DATE 6/93 |

| DRAWN BY | |
|----------|-----------|
| SAR | DATE 6/93 |

| CHECKED BY | |
|------------|-----------|
| KLD | DATE 6/93 |

| CITY OF ALBUQUERQUE | |
|-------------------------------------|--|
| PUBLIC WORKS DEPARTMENT | |
| ENGINEERING GROUP | |
| RANCHO SERENO SUBDIVISION - UNIT II | |
| PRELIMINARY GRADING & DRAINAGE PLAN | |
| PIEDRAS MARCADAS DAM BASIN | |

| APPROVALS | ENGINEER | DATE | APPROVALS | ENGINEER | DATE |
|--------------|----------|------|-------------|----------|------|
| DRC CHAIRMAN | | | WATER | | |
| TRANS. DEV. | | | WASTE WATER | | |
| HYDROLOGY | | | | | |

| PROJECT NO. | MAP C-12 NO. D-12 | SHEET 4 OF 4 |
|-------------|-------------------|--------------|
| XXXX.XX | | |

| CITY OF ALBUQUERQUE | |
|-------------------------------------|--|
| PUBLIC WORKS DEPARTMENT | |
| ENGINEERING GROUP | |
| RANCHO SERENO SUBDIVISION - UNIT II | |
| PRELIMINARY GRADING & DRAINAGE PLAN | |
| PIEDRAS MARCADAS DAM BASIN | |

| APPROVALS | ENGINEER | DATE | APPROVALS | ENGINEER | DATE |
|--------------|----------|------|-------------|----------|------|
| DRC CHAIRMAN | | | WATER | | |
| TRANS. DEV. | | | WASTE WATER | | |
| HYDROLOGY | | | | | |

| PROJECT NO. | MAP C-12 NO. D-12 | SHEET 4 OF 4 |
|-------------|-------------------|--------------|
| XXXX.XX | | |

| CITY OF ALBUQUERQUE | |
|-------------------------------------|--|
| PUBLIC WORKS DEPARTMENT | |
| ENGINEERING GROUP | |
| RANCHO SERENO SUBDIVISION - UNIT II | |
| PRELIMINARY GRADING & DRAINAGE PLAN | |
| PIEDRAS MARCADAS DAM BASIN | |

| APPROVALS | ENGINEER | DATE | APPROVALS | ENGINEER | DATE |
|--------------|----------|------|-------------|----------|------|
| DRC CHAIRMAN | | | WATER | | |
| TRANS. DEV. | | | WASTE WATER | | |
| HYDROLOGY | | | | | |

| PROJECT NO. | MAP C-12 NO. D-12 | SHEET 4 OF 4 |
|-------------|-------------------|--------------|
| XXXX.XX | | |

| CITY OF ALBUQUERQUE | |
|-------------------------------------|--|
| PUBLIC WORKS DEPARTMENT | |
| ENGINEERING GROUP | |
| RANCHO SERENO SUBDIVISION - UNIT II | |
| PRELIMINARY GRADING & DRAINAGE PLAN | |
| PIEDRAS MARCADAS DAM BASIN | |

| APPROVALS | ENGINEER | DATE | APPROVALS | ENGINEER | DATE |
|--------------|----------|------|-------------|----------|------|
| DRC CHAIRMAN | | | WATER | | |
| TRANS. DEV. | | | WASTE WATER | | |
| HYDROLOGY | | | | | |

| PROJECT NO. | MAP C-12 NO. D-12 | SHEET 4 OF 4 |
|-------------|-------------------|--------------|
| XXXX.XX | | |

| CITY OF ALBUQUERQUE | |
|-------------------------------------|--|
| PUBLIC WORKS DEPARTMENT | |
| ENGINEERING GROUP | |
| RANCHO SERENO SUBDIVISION - UNIT II | |
| PRELIMINARY GRADING & DRAINAGE PLAN | |
| PIEDRAS MARCADAS DAM BASIN | |

| APPROVALS | ENGINEER | DATE | APPROVALS | ENGINEER | DATE |
|--------------|----------|------|-------------|----------|------|
| DRC CHAIRMAN | | | WATER | | |
| TRANS. DEV. | | | WASTE WATER | | |
| HYDROLOGY | | | | | |

| PROJECT NO. | MAP C-12 NO. D-12 | SHEET 4 OF 4 |
|-------------|-------------------|--------------|
| XXXX.XX | | |

| CITY OF ALBUQUERQUE | |
|-------------------------------------|--|
| PUBLIC WORKS DEPARTMENT | |
| ENGINEERING GROUP | |
| RANCHO SERENO SUBDIVISION - UNIT II | |
| PRELIMINARY GRADING & DRAINAGE PLAN | |
| PIEDRAS MARCADAS DAM BASIN | |

| APPROVALS | ENGINEER | DATE | APPROVALS | ENGINEER | DATE |
|--------------|----------|------|-------------|----------|------|
| DRC CHAIRMAN | | | WATER | | |
| TRANS. DEV. | | | WASTE WATER | | |
| HYDROLOGY | | | | | |

| PROJECT NO. | MAP C-12 NO. D-12 | SHEET 4 OF 4 |
|-------------|-------------------|--------------|
| XXXX.XX | | |

| CITY OF ALBUQUERQUE | |
|-------------------------------------|--|
| PUBLIC WORKS DEPARTMENT | |
| ENGINEERING GROUP | |
| RANCHO SERENO SUBDIVISION - UNIT II | |
| PRELIMINARY GRADING & DRAINAGE PLAN | |
| PIEDRAS MARCADAS DAM BASIN | |

| APPROVALS | ENGINEER | DATE | APPROVALS | ENGINEER | DATE |
|--------------|----------|------|-------------|----------|------|
| DRC CHAIRMAN | | | WATER | | |
| TRANS. DEV. | | | WASTE WATER | | |
| HYDROLOGY | | | | | |

| PROJECT NO. | MAP C-12 NO. D-12 | SHEET 4 OF 4 |
|-------------|-------------------|--------------|
| XXXX.XX | | |

| CITY OF ALBUQUERQUE | |
|-------------------------------------|--|
| PUBLIC WORKS DEPARTMENT | |
| ENGINEERING GROUP | |
| RANCHO SERENO SUBDIVISION - UNIT II | |
| PRELIMINARY GRADING & DRAINAGE PLAN | |
| PIEDRAS MARCADAS DAM BASIN | |

| APPROVALS | ENGINEER | DATE | APPROVALS | ENGINEER | DATE |
|--------------|----------|------|-------------|----------|------|
| DRC CHAIRMAN | | | WATER | | |
| TRANS. DEV. | | | WASTE WATER | | |
| HYDROLOGY | | | | | |

| PROJECT NO. | MAP C-12 NO. D-12 | SHEET 4 OF 4 |
|-------------|-------------------|--------------|
| XXXX.XX | | |

| CITY OF ALBUQUERQUE | |
|-------------------------------------|--|
| PUBLIC WORKS DEPARTMENT | |
| ENGINEERING GROUP | |
| RANCHO SERENO SUBDIVISION - UNIT II | |
| PRELIMINARY GRADING & DRAINAGE PLAN | |
| PIEDRAS MARCADAS DAM BASIN | |

| APPROVALS | ENGINEER | DATE | APPROVALS | ENGINEER | DATE |
|--------------|----------|------|-------------|----------|------|
| DRC CHAIRMAN | | | WATER | | |
| TRANS. DEV. | | | WASTE WATER | | |
| HYDROLOGY | | | | | |

| PROJECT NO. | MAP C-12 NO. D-12 | SHEET 4 OF 4 |
|-------------|-------------------|--------------|
| XXXX.XX | | |

| CITY OF ALBUQUERQUE | |
|-------------------------------------|--|
| PUBLIC WORKS DEPARTMENT | |
| ENGINEERING GROUP | |
| RANCHO SERENO SUBDIVISION - UNIT II | |
| PRELIMINARY GRADING & DRAINAGE PLAN | |
| PIEDRAS MARCADAS DAM BASIN | |

| APPROVALS | ENGINEER | DATE | APPROVALS | ENGINEER | DATE |
|--------------|----------|------|-------------|----------|------|
| DRC CHAIRMAN | | | WATER | | |
| TRANS. DEV. | | | WASTE WATER | | |
| HYDROLOGY | | | | | |

| PROJECT NO. | MAP C-12 NO. D-12 | SHEET 4 OF 4 |
|-------------|-------------------|--------------|
| XXXX.XX | | |

| CITY OF ALBUQUERQUE | |
|-------------------------------------|--|
| PUBLIC WORKS DEPARTMENT | |
| ENGINEERING GROUP | |
| RANCHO SERENO SUBDIVISION - UNIT II | |
| PRELIMINARY GRADING & DRAINAGE PLAN | |
| PIEDRAS MARCADAS DAM BASIN | |

| APPROVALS | ENGINEER | DATE | APPROVALS | ENGINEER | DATE |
|--------------|----------|------|-------------|----------|------|
| DRC CHAIRMAN | | | WATER | | |
| TRANS. DEV. | | | WASTE WATER | | |
| HYDROLOGY | | | | | |

| PROJECT NO. | MAP C-12 NO. D-12 | SHEET 4 OF 4 |
|-------------|-------------------|--------------|
| XXXX.XX | | |

| CITY OF ALBUQUERQUE | |
|-------------------------------------|--|
| PUBLIC WORKS DEPARTMENT | |
| ENGINEERING GROUP | |
| RANCHO SERENO SUBDIVISION - UNIT II | |
| PRELIMINARY GRADING & DRAINAGE PLAN | |
| PIEDRAS MARCADAS DAM BASIN | |

| APPROVALS | ENGINEER | DATE | APPROVALS | ENGINEER | DATE |
|--------------|----------|------|-------------|----------|------|
| DRC CHAIRMAN | | | WATER | | |
| TRANS. DEV. | | | WASTE WATER | | |
| HYDROLOGY | | | | | |

| PROJECT NO. | MAP C-12 NO. D-12 | SHEET 4 OF 4 |
|-------------|-------------------|--------------|
| XXXX.XX | | |

| CITY OF ALBUQUERQUE | |
|-------------------------------------|--|
| PUBLIC WORKS DEPARTMENT | |
| ENGINEERING GROUP | |
| RANCHO SERENO SUBDIVISION - UNIT II | |
| PRELIMINARY GRADING & DRAINAGE PLAN | |
| PIEDRAS MARCADAS DAM BASIN | |

| APPROVALS | ENGINEER | DATE | APPROVALS | ENGINEER | DATE |
|--------------|----------|------|-------------|----------|------|
| DRC CHAIRMAN | | | WATER | | |
| TRANS. DEV. | | | WASTE WATER | | |
| HYDROLOGY | | | | | |

| PROJECT NO. | MAP C-12 NO. D-12 | SHEET 4 OF 4 |
|-------------|-------------------|--------------|
| XXXX.XX | | |

| CITY OF ALBUQUERQUE | |
|-------------------------------------|--|
| PUBLIC WORKS DEPARTMENT | |
| ENGINEERING GROUP | |
| RANCHO SERENO SUBDIVISION - UNIT II | |
| PRELIMINARY GRADING & DRAINAGE PLAN | |
| PIEDRAS MARCADAS DAM BASIN | |

| APPROVALS | ENGINEER | DATE | APPROVALS | ENGINEER | DATE |
|--------------|----------|------|-------------|----------|------|
| DRC CHAIRMAN | | | WATER | | |
| TRANS. DEV. | | | WASTE WATER | | |
| HYDROLOGY | | | | | |

| PROJECT NO. | MAP C-12 NO. D-12 | SHEET 4 OF 4 |
|-------------|-------------------|--------------|
| XXXX.XX | | |

| CITY OF ALBUQUERQUE | |
|-------------------------------------|--|
| PUBLIC WORKS DEPARTMENT | |
| ENGINEERING GROUP | |
| RANCHO SERENO SUBDIVISION - UNIT II | |
| PRELIMINARY GRADING & DRAINAGE PLAN | |
| PIEDRAS MARCADAS DAM BASIN | |

| APPROVALS | ENGINEER | DATE | APPROVALS | ENGINEER | DATE |
|--------------|----------|------|-------------|----------|------|
| DRC CHAIRMAN | | | WATER | | |
| TRANS. DEV. | | | WASTE WATER | | |
| HYDROLOGY | | | | | |

| PROJECT NO. | MAP C-12 NO. D-12 | SHEET 4 OF 4 |
|-------------|-------------------|--------------|
| XXXX.XX | | |

| CITY OF ALBUQUERQUE | |
|-------------------------------------|--|
| PUBLIC WORKS DEPARTMENT | |
| ENGINEERING GROUP | |
| RANCHO SERENO SUBDIVISION - UNIT II | |
| PRELIMINARY GRADING & DRAINAGE PLAN | |
| PIEDRAS MARCADAS DAM BASIN | |

| APPROVALS | ENGINEER | DATE | APPROVALS | ENGINEER | DATE |
|--------------|----------|------|-------------|----------|------|
| DRC CHAIRMAN | | | WATER | | |
| TRANS. DEV. | | | WASTE WATER | | |
| HYDROLOGY | | | | | |

| PROJECT NO. | MAP C-12 NO. D-12 | SHEET 4 OF 4 |
|-------------|-------------------|--------------|
| XXXX.XX | | |

| CITY OF ALBUQUERQUE | |
|-------------------------------------|--|
| PUBLIC WORKS DEPARTMENT | |
| ENGINEERING GROUP | |
| RANCHO SERENO SUBDIVISION - UNIT II | |
| PRELIMINARY GRADING & DRAINAGE PLAN | |
| PIEDRAS MARCADAS DAM BASIN | |

| APPROVALS | ENGINEER | DATE | APPROVALS | ENGINEER | DATE |
|--------------|----------|------|-------------|----------|------|
| DRC CHAIRMAN | | | WATER | | |
| TRANS. DEV. | | | WASTE WATER | | |
| HYDROLOGY | | | | | |

| PROJECT NO. | MAP C-12 NO. D-12 | SHEET 4 OF 4 |
|-------------|-------------------|--------------|
| XXXX.XX | | |

| CITY OF ALBUQUERQUE | |
|-------------------------------------|--|
| PUBLIC WORKS DEPARTMENT | |
| ENGINEERING GROUP | |
| RANCHO SERENO SUBDIVISION - UNIT II | |
| PRELIMINARY GRADING & DRAINAGE PLAN | |
| PIEDRAS MARCADAS DAM BASIN | |

| APPROVALS | ENGINEER | DATE | APPROVALS | ENGINEER | DATE |
|--------------|----------|------|-------------|----------|------|
| DRC CHAIRMAN | | | WATER | | |
| TRANS. DEV. | | | WASTE WATER | | |
| HYDROLOGY | | | | | |

| PROJECT NO. | MAP C-12 NO. D-12 | SHEET 4 OF 4 |
|-------------|-------------------|--------------|
| XXXX.XX | | |

| CITY OF ALBUQUERQUE | |
|-------------------------------------|--|
| PUBLIC WORKS DEPARTMENT | |
| ENGINEERING GROUP | |
| RANCHO SERENO SUBDIVISION - UNIT II | |
| PRELIMINARY GRADING & DRAINAGE PLAN | |
| PIEDRAS MARCADAS DAM BASIN | |

| APPROVALS | ENGINEER | DATE | APPROVALS | ENGINEER | DATE |
|--------------|----------|------|-------------|----------|------|
| DRC CHAIRMAN | | | WATER | | |
| TRANS. DEV. | | | WASTE WATER | | |
| HYDROLOGY | | | | | |

| PROJECT NO. | MAP C-12 NO. D-12 | SHEET 4 OF 4 |
|-------------|-------------------|--------------|
| XXXX.XX | | |

| CITY OF ALBUQUERQUE | |
|-------------------------------------|--|
| PUBLIC WORKS DEPARTMENT | |
| ENGINEERING GROUP | |
| RANCHO SERENO SUBDIVISION - UNIT II | |
| PRELIMINARY GRADING & DRAINAGE PLAN | |
| PIEDRAS MARCADAS DAM BASIN | |

| APPROVALS | ENGINEER | DATE | APPROVALS | ENGINEER | DATE |
|--------------|----------|------|-------------|----------|------|
| DRC CHAIRMAN | | | WATER | | |
| TRANS. DEV. | | | WASTE WATER | | |
| HYDROLOGY | | | | | |

| PROJECT NO. | MAP C-12 NO. D-12 | SHEET 4 OF 4 |
|-------------|-------------------|--------------|
| XXXX.XX | | |

| CITY OF ALBUQUERQUE | |
|-------------------------------------|--|
| PUBLIC WORKS DEPARTMENT | |
| ENGINEERING GROUP | |
| RANCHO SERENO SUBDIVISION - UNIT II | |
| PRELIMINARY GRADING & DRAINAGE PLAN | |
| PIEDRAS MARCADAS DAM BASIN | |

| APPROVALS | ENGINEER | DATE | APPROVALS | ENGINEER | DATE |
|--------------|----------|------|-------------|----------|------|
| DRC CHAIRMAN | | | WATER | | |
| TRANS. DEV. | | | WASTE WATER | | |
| HYDROLOGY | | | | | |

| PROJECT NO. | MAP C-12 NO. D-12 | SHEET 4 OF 4 |
|-------------|-------------------|--------------|
| XXXX.XX | | |

| CITY OF ALBUQUERQUE | |
|-------------------------------------|--|
| PUBLIC WORKS DEPARTMENT | |
| ENGINEERING GROUP | |
| RANCHO SERENO SUBDIVISION - UNIT II | |
| PRELIMINARY GRADING & DRAINAGE PLAN | |
| PIEDRAS MARCADAS DAM BASIN | |

| APPROVALS | ENGINEER | DATE | APPROVALS | ENGINEER | DATE |
|--------------|----------|------|-------------|----------|------|
| DRC CHAIRMAN | | | WATER | | |
| TRANS. DEV. | | | WASTE WATER | | |
| HYDROLOGY | | | | | |

| PROJECT NO. | MAP C-12 NO. D-12 | SHEET 4 OF 4 |
|-------------|-------------------|--------------|
| XXXX.XX | | |

| CITY OF ALBUQUERQUE | |
|-------------------------------------|--|
| PUBLIC WORKS DEPARTMENT | |
| ENGINEERING GROUP | |
| RANCHO SERENO SUBDIVISION - UNIT II | |
| PRELIMINARY GRADING & DRAINAGE PLAN | |
| PIEDRAS MARCADAS DAM BASIN | |

| APPROVALS | ENGINEER | DATE | APPROVALS | ENGINEER | DATE |
|--------------|----------|------|-------------|----------|------|
| DRC CHAIRMAN | | | WATER | | |
| TRANS. DEV. | | | WASTE WATER | | |
| HYDROLOGY | | | | | |

| PROJECT NO. | MAP C-12 NO. D-12 | SHEET 4 OF 4 |
|-------------|-------------------|--------------|
| XXXX.XX | | |

| CITY OF ALBUQUERQUE | |
|-------------------------------------|--|
| PUBLIC WORKS DEPARTMENT | |
| ENGINEERING GROUP | |
| RANCHO SERENO SUBDIVISION - UNIT II | |
| PRELIMINARY GRADING & DRAINAGE PLAN | |
| PIEDRAS MARCADAS DAM BASIN | |

| APPROVALS | ENGINEER | DATE | APPROVALS | ENGINEER | DATE |
|--------------|----------|------|-------------|----------|------|
| DRC CHAIRMAN | | | WATER | | |
| TRANS. DEV. | | | WASTE WATER | | |
| HYDROLOGY | | | | | |

| PROJECT NO. | MAP C-12 NO. D-12 | SHEET 4 OF 4 |
|-------------|-------------------|--------------|
| XXXX.XX | | |

| CITY OF ALBUQUERQUE | |
|-------------------------------------|--|
| PUBLIC WORKS DEPARTMENT | |
| ENGINEERING GROUP | |
| RANCHO SERENO SUBDIVISION - UNIT II | |
| PRELIMINARY GRADING & DRAINAGE PLAN | |
| PIEDRAS MARCADAS DAM BASIN | |

| APPROVALS | ENGINEER | DATE | APPROVALS | ENGINEER | DATE |
|--------------|----------|------|-------------|----------|------|
| DRC CHAIRMAN | | | WATER | | |
| TRANS. DEV. | | | WASTE WATER | | |
| HYDROLOGY | | | | | |

| PROJECT NO. | MAP C-12 NO. D-12 | SHEET 4 OF 4 |
|-------------|-------------------|--------------|
| XXXX.XX | | |

| CITY OF ALBUQUERQUE | |
|-------------------------------------|--|
| PUBLIC WORKS DEPARTMENT | |
| ENGINEERING GROUP | |
| RANCHO SERENO SUBDIVISION - UNIT II | |
| PRELIMINARY GRADING & DRAINAGE PLAN | |
| PIEDRAS MARCADAS DAM BASIN | |

| APPROVALS | ENGINEER | DATE | APPROVALS | ENGINEER | DATE |
|--------------|----------|------|-------------|----------|------|
| DRC CHAIRMAN | | | WATER | | |
| TRANS. DEV. | | | WASTE WATER | | |
| HYDROLOGY | | | | | |

| PROJECT NO. | MAP C-12 NO. D-12 | SHEET 4 OF 4 |
|-------------|-------------------|--------------|
| XXXX.XX | | |

| CITY OF ALBUQUERQUE | |
|-------------------------|--|
| PUBLIC WORKS DEPARTMENT | |
| ENGINEERING GROUP | |