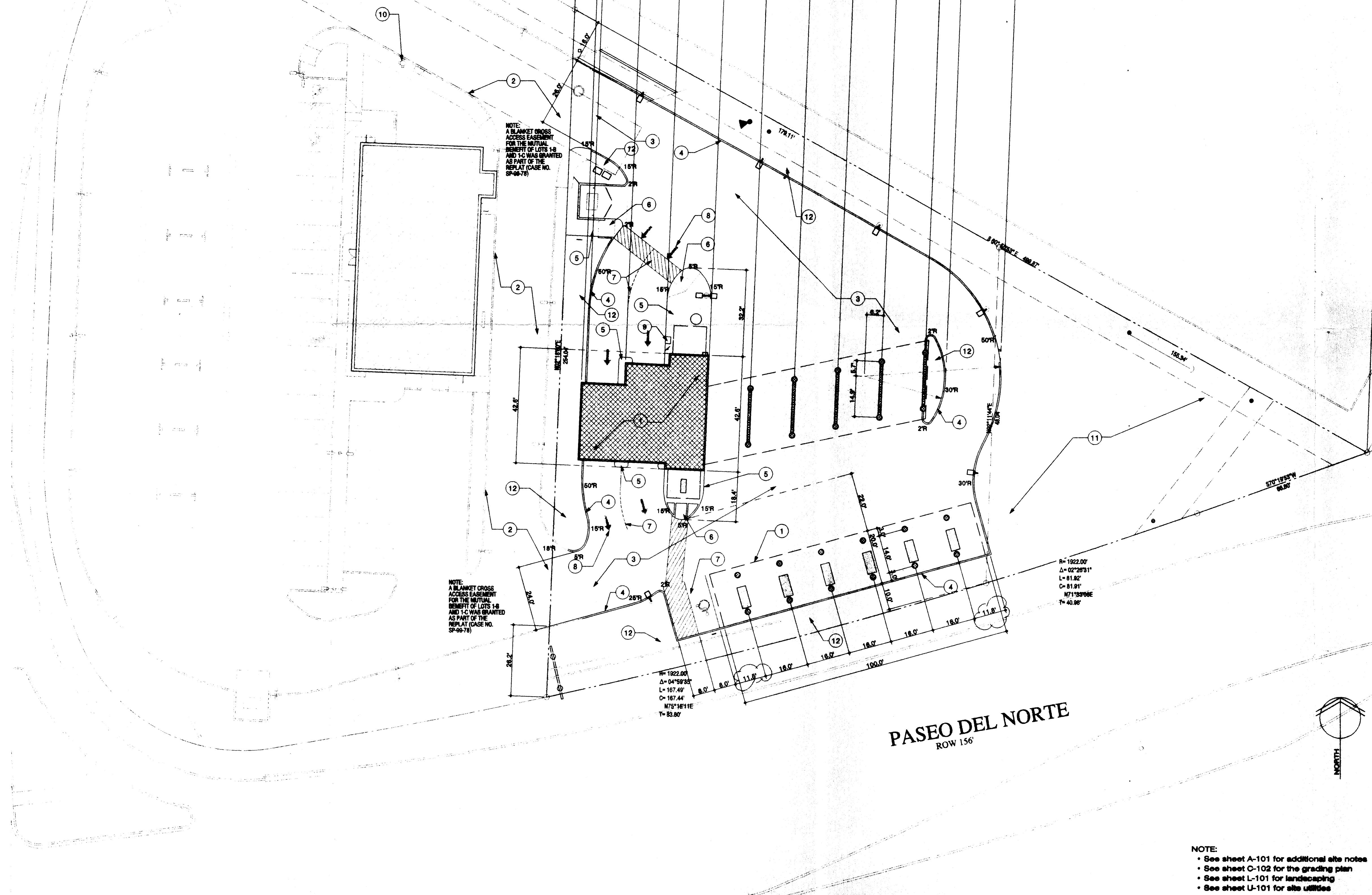


EAGLE RANCH ROAD N.W.



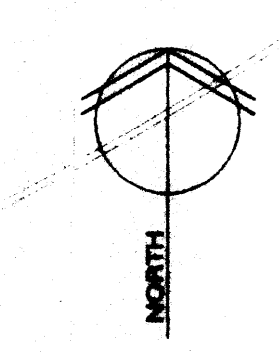
NOTE:  
A BLANKET CROSS  
ACCESS EASEMENT  
FOR THE MUTUAL  
BENEFIT OF LOTS 1-8  
AND 1-2 WAS GRANTED  
AS PART OF THE  
REPLAT (CASE NO.  
SP-99-79)

NOTE:  
A BLANKET CROSS  
ACCESS EASEMENT  
FOR THE MUTUAL  
BENEFIT OF LOTS 1-8  
AND 1-2 WAS GRANTED  
AS PART OF THE  
REPLAT (CASE NO.  
SP-99-79)

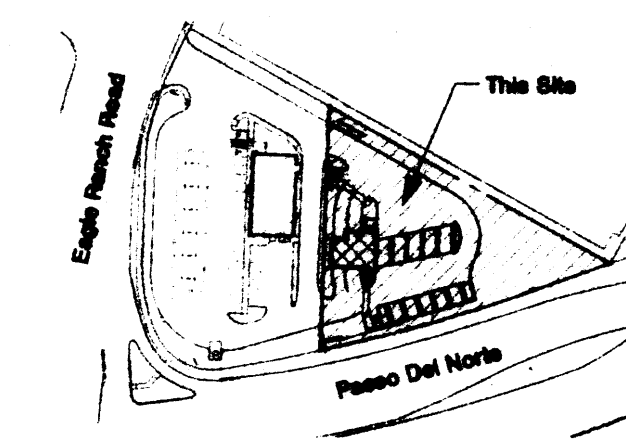
R= 1922.00'  
Δ= 04°59'33"  
L= 167.49'  
C= 167.44'  
N75°18'11"E  
T= 53.80'

R= 1922.00'  
Δ= 02°28'31"  
L= 81.82'  
C= 81.91'  
N71°33'08"E  
T= 40.80'

PASEO DEL NORTE  
ROW 156'



NOTE:  
• See sheet A-101 for additional site notes  
• See sheet C-102 for the grading plan  
• See sheet L-101 for landscaping  
• See sheet U-101 for site utilities

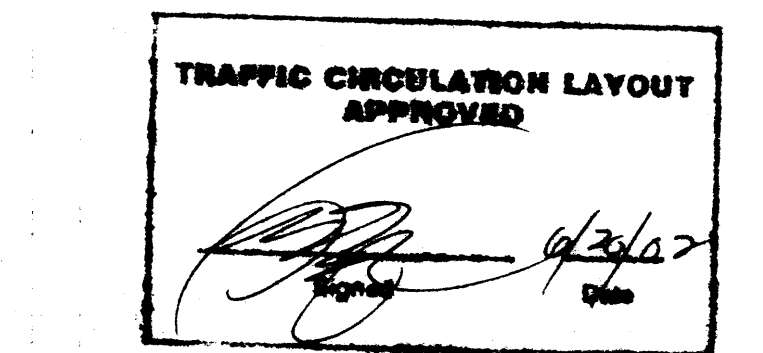


### Site Key

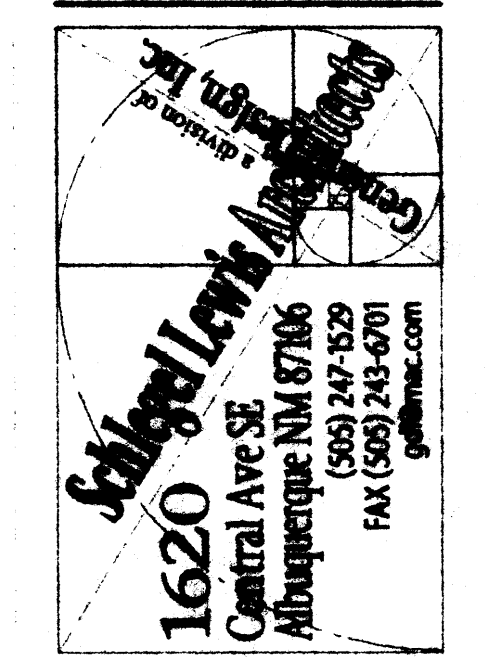
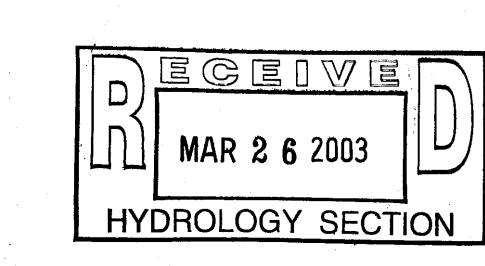
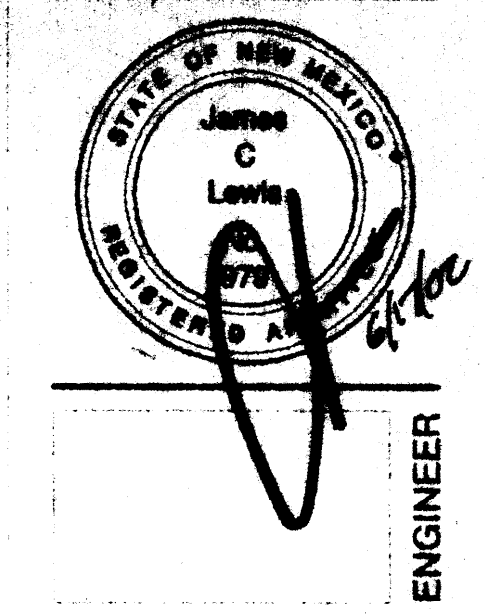
The engineer's certification required by the hydrology section needs to include certification that this site was constructed in accordance with the traffic circulation layout (TCL) before the certificate of occupancy is released.

### Notes

- 1 Building location, -see sheet A-101.
- 2 Existing asphalt paving and concrete curbs
- 3 New asphalt paving, -see sheet A-101.
- 4 New 6" High concrete curbs, -see sheet A-101.
- 5 New concrete sidewalk, -see sheet A-101.
- 6 New Concrete ramp, -see sheet A-101.
- 7 Painted striping, -see sheet A-101.
- 8 Painted arrow, -see sheet A-101.
- 9 Car wash control, -see sheet A-101.
- 10 Existing fire hydrant location.
- 11 Landscaping/ponding area, -see sheets C-102 & L-101.
- 12 Landscaping area, -see sheet L-101



### Keyed Notes



These drawings are an "As-Built" of "Record", and shall not be reproduced, copied, or published without the written permission of the Engineer.



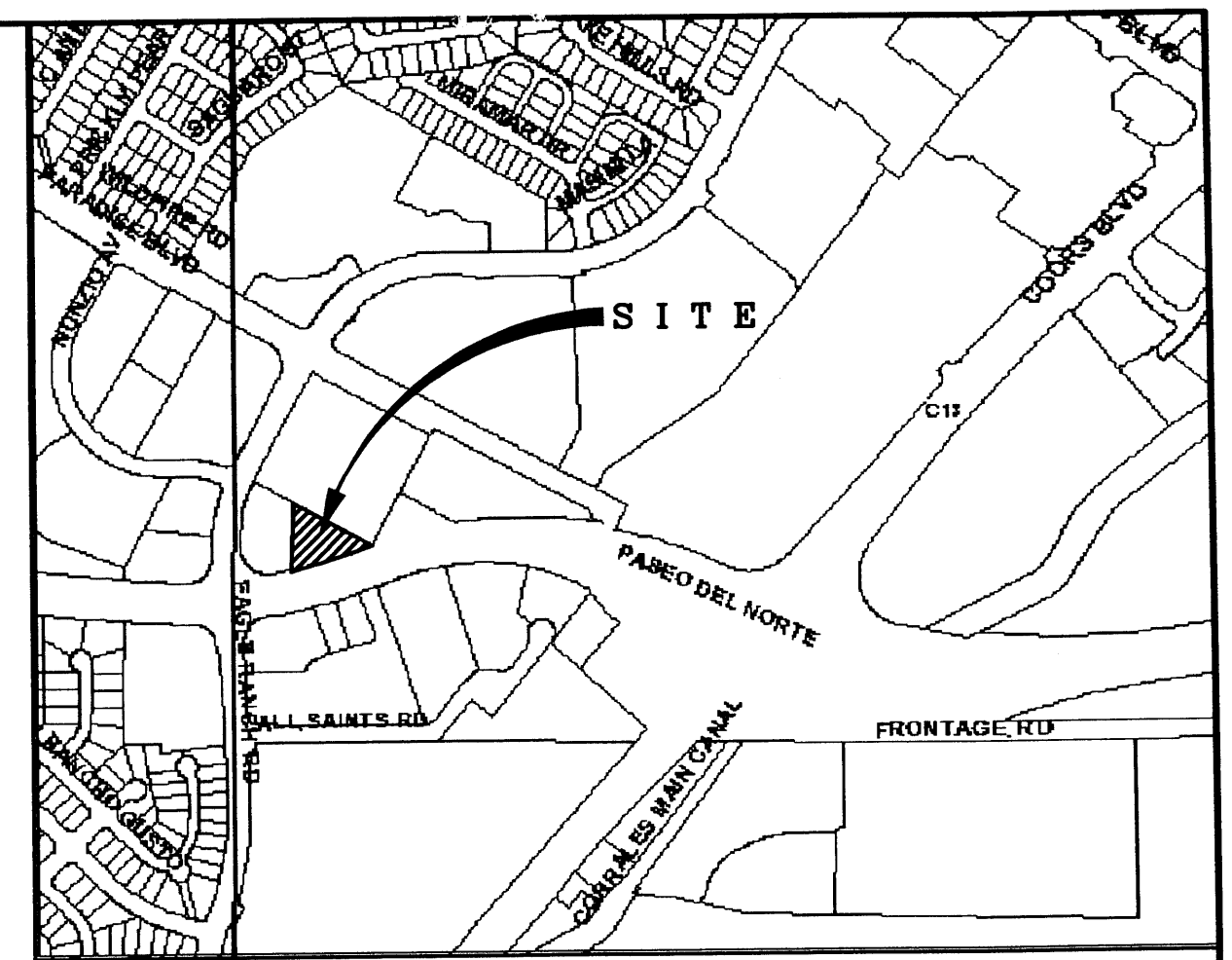
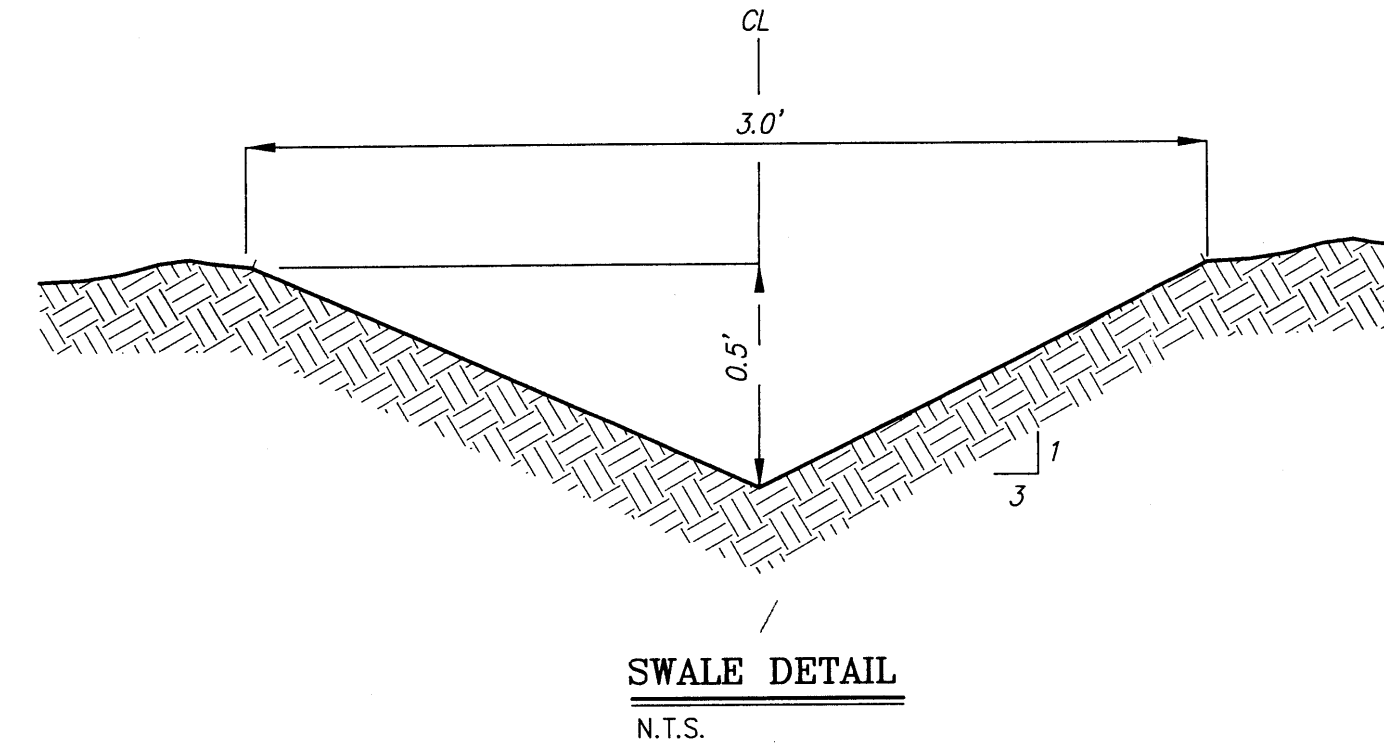
**The Ultimate Car Wash**  
9210 Eagle Ranch Road NW  
Albuquerque New Mexico 87106

ISSUE DATE:  
24 MAY 02  
REVISIONS:  
13 JUN 02

TRAFFIC CONTROL  
LAYOUT PLAN

PROJECT SHEET  
C-101  
OF 12





RECEIVED  
MAR 9 2005  
HYDROLOGY SECTION

Designed: <i>ALD</i>	Drawn: <i>DER</i>	Checked: <i>DMG</i>	Sheet <b><i>I</i></b> of <b><i>I</i></b>
Scale: <i>1" = 30'</i>	Date: <i>08/26/02</i>	Job: <i>A01156</i>	

[illegible]

```

ANION SURVEY TABLE (ANION019) = ANAFCA Hydrologic Model - January, 1994
INPUT FILE = S005.DAT
RUN DATE (MM/DD/YY) = 05/13/2002
USER NO. = H_1000091.01

  COMMAND      HYDROGRAPH IDENTIFICATION      FROM TO AREA PEAK RUNOFF      TIME TO CES      PAGE
              NO. NO. NO. (SQ MI) (CFS) VOLUME (AC-FT) (HOURS) (HOURS)
START
RAINFALL: TYPE 1
  CHURCH RD RD  100.00  - 1  .00356  9.17 .336  1.7075  1.500  4.02 (PEAK INF)
  POUER RESERVOIR 100.00  1  2  .00356  1.97 .336  1.7068  1.933  .565 (AC)

```

APPROVAL	NAME	DATE
INSPECTOR		

THE SITE IS NOT IN A 100 YEAR FLOOD PLAIN.

30' 15' 0 30' 60'

SCALE: 1" = 30'

F:\A01ipbs\A1156ercw\A01156ad.dwg\08-26-02\DER MJR

EAGLE RANCH ROAD N.W.

PASEO DEL NORTE

F:\A01JOBS\A1156ercw\A1156gd.dwg Thu Aug 29 13:18:19 2002 D. MARK GOODWIN & ASSOCIATES; PLTTED BY: DER