

# CITY OF ALBUQUERQUE



July 16, 2018  
Alexander Finale Architect  
Yolanda Montoya  
8724 Alameda Park Dr. NE  
Albuquerque, NM

**Re: J-Mar & Associates**  
**85505 Paseo Alameda NE**  
**Traffic Circulation Layout**  
Engineer's/Architect's Stamp 07-14 - 18 (C16-D006DD)

Dear Ms. Montoya,

Based upon the information provided in your submittal received 07-16-18, the above referenced plan cannot be approved for Building Permit until the following comments are addressed:

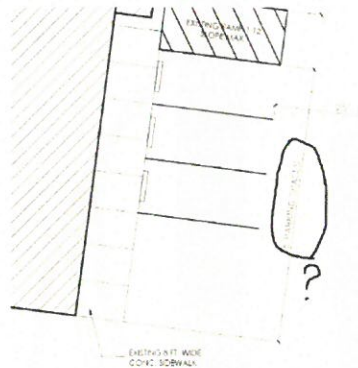
PO Box 1293

Albuquerque

NM 87103


[www.cabq.gov](http://www.cabq.gov)

1. Please list the width and length for all existing and proposed parking spaces. Some dimensions are not shown.
2. Please correct the number of parking space provided as shown in the picture below:



Resubmit a revised plan along with fully completed Drainage Transportation Information Sheet to front counter personnel for log in and evaluation by Transportation. PDF copies of the plans and submittal package must be emailed to [PLNDRS@cabq.gov](mailto:PLNDRS@cabq.gov) at time of resubmittal. If you have any questions, please contact Me at 924 -3675 or Racquel Michel at 924-3991.

Sincerely,

A handwritten signature in dark ink, appearing to read 'maadandar', with a long horizontal flourish extending to the right.

Mojgan Maadandar  
Engineer Associate, Planning Dept.  
Development Review Services

MM    via: email  
C:    CO Clerk, File