



June 7, 2019

Aria Studio Consultant, inc  
Debra West  
PO BOX 1515  
Cedar crest NM 87008

**Re: Horizon 3**  
**8830 horizon Blvd NE Albuquerque NM**  
**Traffic Circulation Layout**  
Engineer's/Architect's Stamp **05-28-2019** (C17D127)

Dear Ms. West,

Based upon the information provided in your submittal received 06-05-19, the above referenced plan cannot be approved for Building Permit until the following comments are addressed:

1. Show the clear sight triangle and add the following note to the plan:  
"Landscaping and signage will not interfere with clear sight requirements.  
Therefore, signs, walls, trees, and shrubbery between 3 and 8 feet tall (as measured from the gutter pan) will not be acceptable in the clear sight triangle."
2. change the design of the entrance driveway to perpendicular with a maximum of ten degree skew.



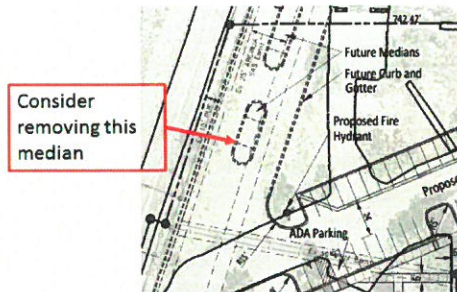
PO Box 1293

Albuquerque

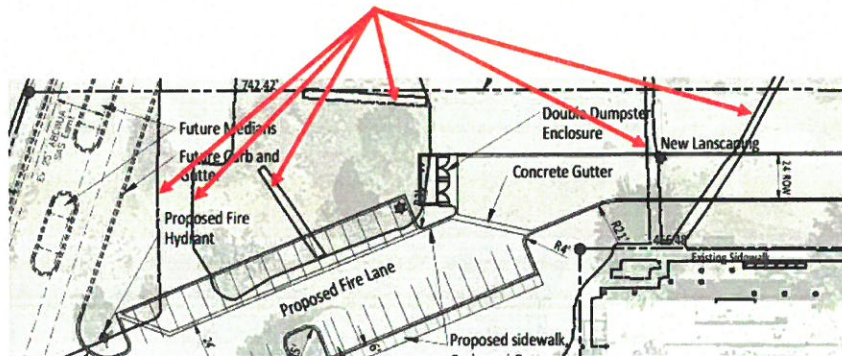
NM 87103

[www.cabq.gov](http://www.cabq.gov)

3. Consider removing one of the medians. The access road must transition after the site access intersection.



4. Please clarify if these features are being removed.



5. Please refer to the attached file for bike rack design as IDO and DPM have new requirements.

# CITY OF ALBUQUERQUE



Resubmit a revised plan along with fully completed Drainage Transportation Information Sheet to front counter personnel for log in and evaluation by Transportation. PDF copies of the plans and submittal package must be emailed to [PLNDRS@cabq.gov](mailto:PLNDRS@cabq.gov) at time of resubmittal. If you have any questions, please contact me at 924-3675.

Sincerely,

Mojgan Maadandar, E.I.  
Associate Engineer, Planning Dept.  
Development Review Services

/MM via: email  
C: CO Clerk, File

PO Box 1293

Albuquerque

NM 87103

[www.cabq.gov](http://www.cabq.gov)



5. Bicycle parking should be in the form of a corral or other vertical feature that clearly demarcates the space as intended for bicyclists only. Corrals are most appropriate at street corners. See Figure 3.8-3 for examples.

**Figure 3.8-3 Bicycle Parking Corral Examples**



### **3.8.3 Maintenance and Parking Agreements**

#### **3.8.3.1 Publicly Maintained On-Street Parking**

1. If the City elects to create on-street parking in the public right-of-way, the City will maintain the parking including the routine sweeping, debris removal, snow removal, ice removal, and any necessary re-striping and repaving

#### **3.8.3.2 Private Parking Agreements**

1. If an applicant develops or redevelops on-street parking in the public right-of-way for its exclusive use, then the applicant shall enter into a parking agreement with the City. The parking agreement shall require the applicant to pay an annual fee to the City for the right to post signs permitting private, exclusive parking, and will require the applicant to construct and maintain the parking spaces, including the routine sweeping, debris removal, snow removal, ice removal, and any necessary re-striping. Under the parking agreement, the City may repave the parking spaces when repaving the adjacent roadway.
2. If the applicant develops or redevelops on-street parking in the public right-of-way for public, non-exclusive use, then the applicant will enter into a parking agreement with the City. The parking agreement will not require the payment of an annual fee, but will require the applicant to construct and maintain the parking spaces, including the routine sweeping, debris removal, snow removal,