

# CITY OF ALBUQUERQUE

Planning Department  
Brennon Williams, Director



Mayor Timothy M. Keller

February 2, 2021

Devin Nguyen, RA  
Modulus Architects  
100 Sun Ave. NE, Ste. 600  
Albuquerque, NM 87109

**Re: StarBucks**  
**8721 Washington NE**  
**Traffic Circulation Layout**  
Architect's Stamp 12-04-2020 (C17-D128)

Dear Mr. Nguyen,

The TCL submittal received 1-28-2021 is approved for Building Permit with. A copy of the stamped and signed plan will be needed for each of the building permit plans. Please keep the original to be used for certification of the site for final C.O. for Transportation. Also, please note that all public infrastructure that is required to be constructed within public right-of-way is required to go through the work order process for further review and approval.

When the site construction is completed and an inspection for Certificate of Occupancy (C.O.) is requested, use the original City stamped approved TCL for certification. Redline any minor changes and adjustments that were made in the field. A NM registered architect or engineer must stamp, sign, and date the certification TCL along with indicating that the development was built in "substantial compliance" with the TCL. Submit this certification, the TCL, and a completed Drainage and Transportation Information Sheet to front counter personnel for log in and evaluation by Transportation.

Once verification of certification is completed and approved, notification will be made to Building Safety to issue Final C.O. To confirm that a final C.O. has been issued, call Building Safety at 924-3690.

Sincerely,

*Jeanne Wolfenbarger*

Jeanne Wolfenbarger, P.E.  
Traffic Engineer, Planning Dept.  
Development Review Services

C: CO Clerk, File



## Architect's Response Letter

**Project:** Starbucks – Alameda & Washington

**Date Issued:** 04<sup>th</sup> Dec 2020

**Issued by:** Devin Nguyen  
Modulus Architects

**To:** COA Development Review Services  
Attention: Nilo Salgado-Fernandez

Mr. Salgado-Fernandez,

Per your comments, below I have listed my response in red under each comment.

1. Traffic Circulation layout must be stamped, signed, and dated by an engineer or architect licensed in the state of New Mexico.

Refer revised site plan sheet AS101 and Site Details sheet A1.1.

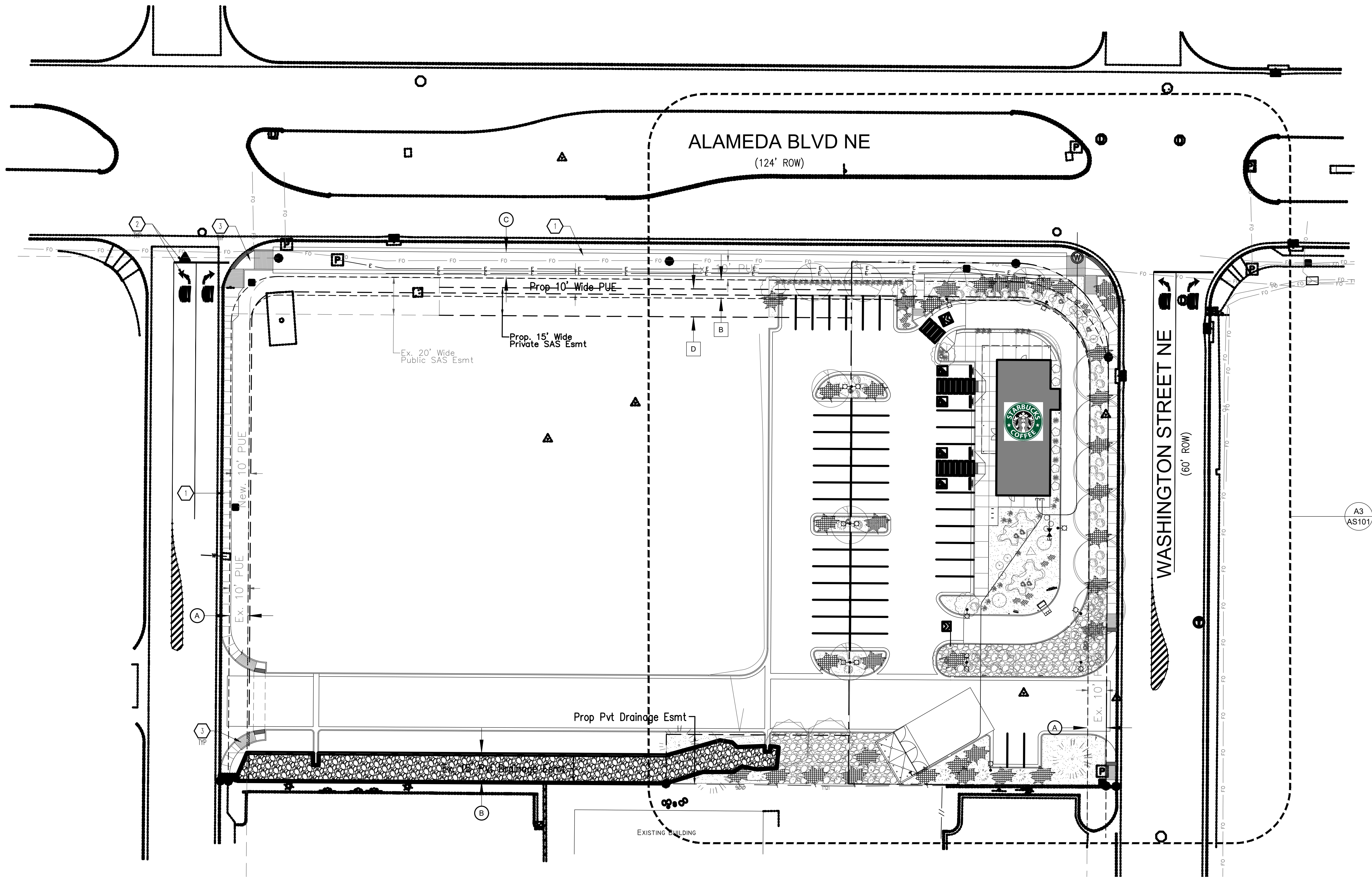
2. TIS Status: TIS approval prior to TCL (building permit) approval. See the TIS thresholds. In general, a minimum combination of 100 vehicles entering and exiting in the peak hour warrants a TIS. Visit with Traffic Engineer for determination, and fill out a TIS Form that states whether one is warranted. In some cases, a trip generation may be requested for determination.

TIS has been reviewed and approved by Matt Grush, PE, PTOE.

Should you have any questions, please contact me at (505)338-1499.

Regards,

Devin Nguyen



**A3** OVERALL SITE PLAN  
SCALE: 1:30

GENERAL NOTES

- A. 10" SERIES SHEETS APPLY TO THE ENTIRE SET OF DRAWINGS.
- B. INDICATED DIMENSIONS ARE TO FACE OF FINISH, UNLESS OTHERWISE NOTED.
- C. EXISTING BROKEN OR CRACKED SIDEWALK SHALL BE REPLACED WITH SIDEWALK AND CURB AND GUTTER.

KEYED NOTES

- 1. CONCRETE SIDEWALK: SEE 83/A1.1.
- 2. NEW DIRECTIONAL PAVEMENT MARKING PER COA STANDARD.
- 3. NEW ADA CURB RAMP: SEE A1/A1.1.

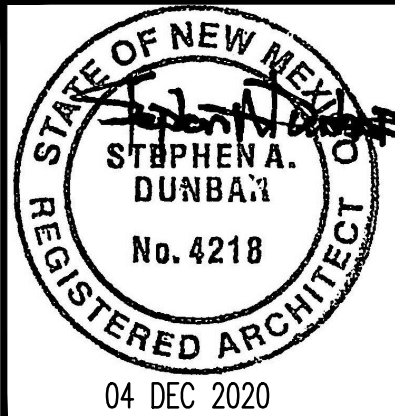
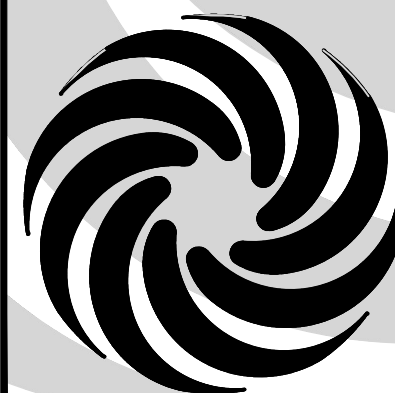
EASEMENTS

- A. EXISTING 10' PUE (4/21/1983, C21-44) AND SHOWN ON PLAT (8/31/1995, 95C-331).
- B. EXISTING 15' PRIVATE DRAINAGE EASEMENT (8/31/1995, 95C-331).
- C. EXISTING 10' COMMUNICATION AND PIM EASEMENT, FIRE SHOWN ON PLAT (1/31/1987, C32-135).

PROPOSED EASEMENT

- A. PROPOSED 15' PRIVATE SAS EASEMENT.
- B. PROPOSED 10' PUE.

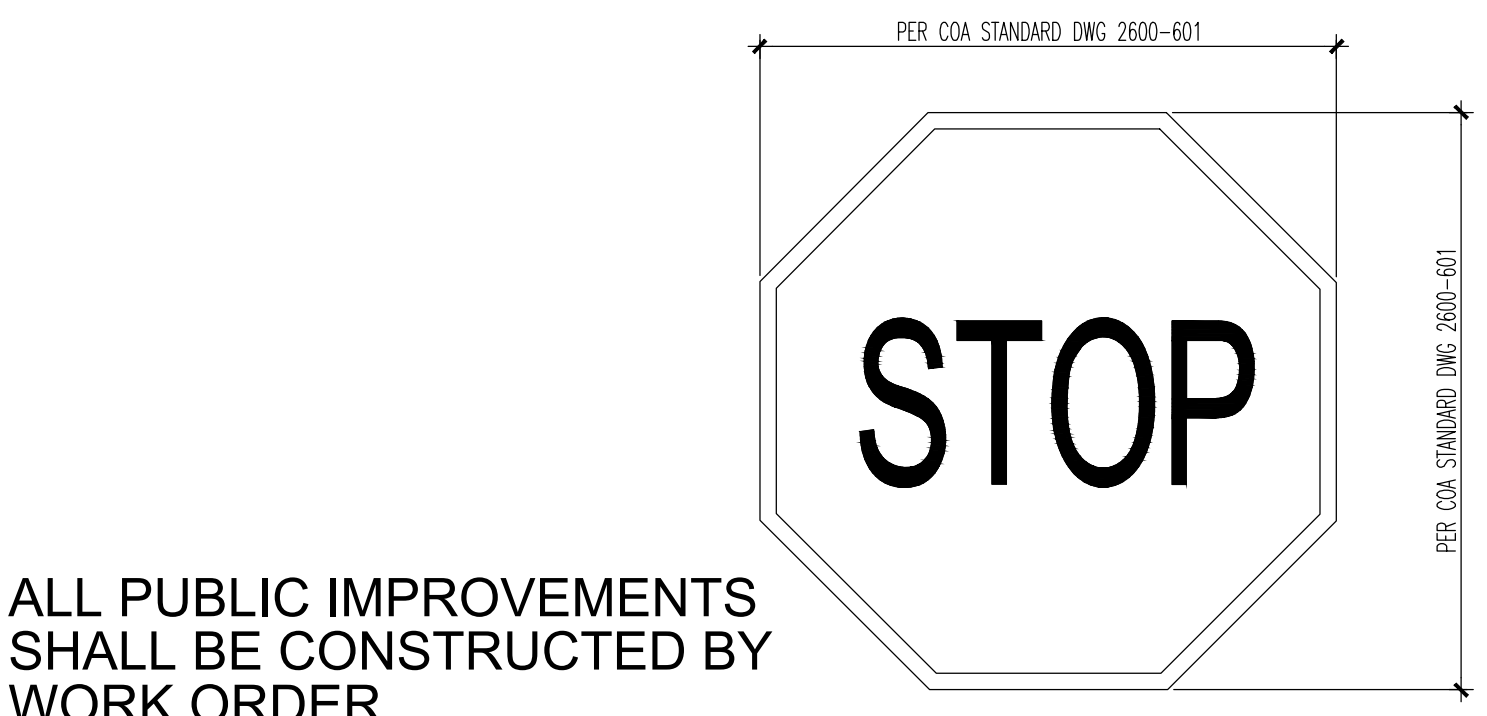
**MODULUS ARCHITECTS**  
100 SUN AVENUE N.E., Ste 305  
ALBUQUERQUE, NEW MEXICO 87109  
PHONE (505) 338-1499 FAX (505) 338-1498



PROJECT TITLE  
**STARBUCKS**  
8721 WASHINGTON STREET NE  
ALBUQUERQUE, NEW MEXICO 87113  
PROJECT MANAGER  
**DEVIN NGUYEN**  
JOB NO.  
**ABO**  
DRAWN BY:  
**DIN**  
SHEET TITLE  
**OVERALL SITE PLAN**

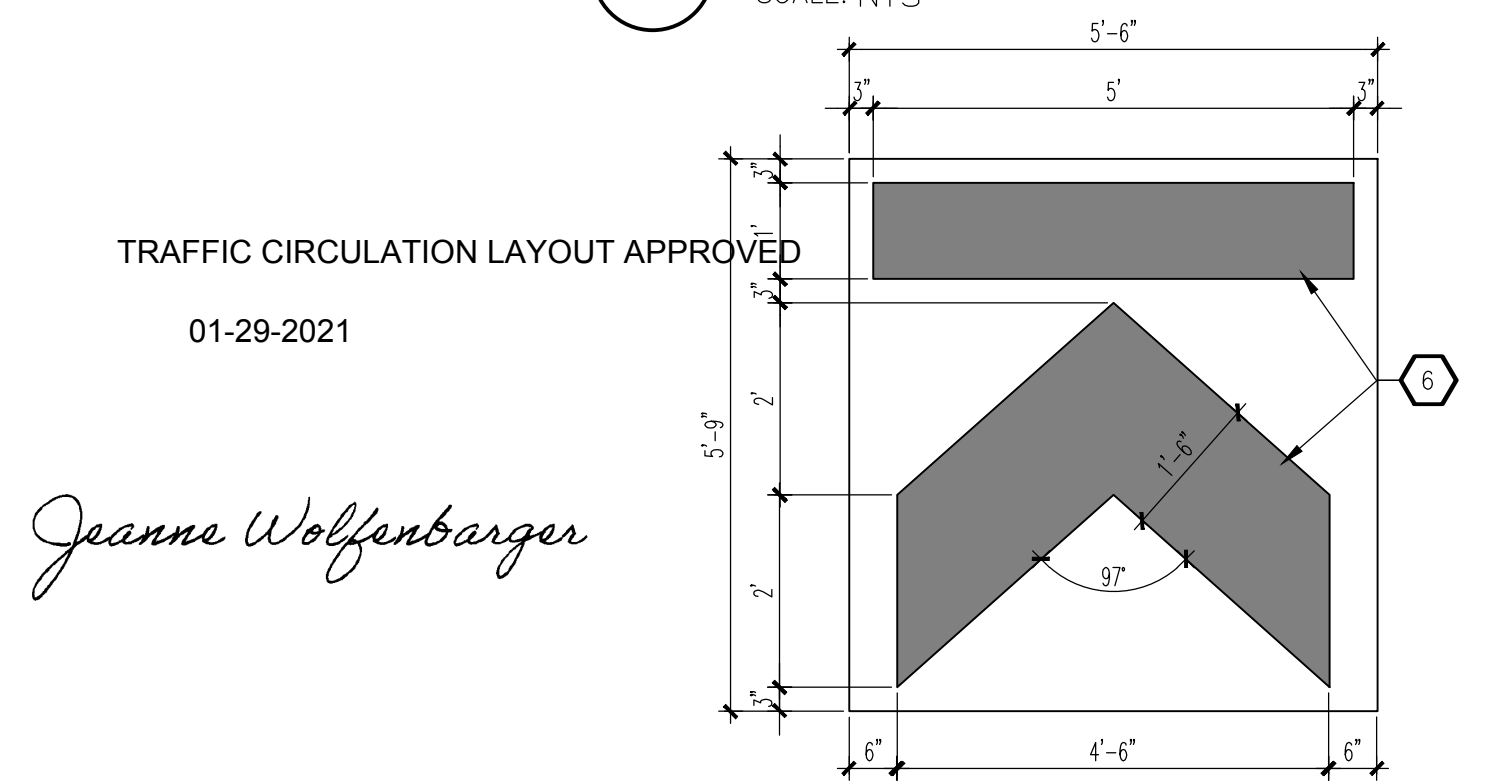
DATE:  
**30.07.2020**  
SCALE:  
**AS NOTED**  
SHEET:  
**AS100**  
OF:





ALL PUBLIC IMPROVEMENTS SHALL BE CONSTRUCTED BY WORK ORDER.

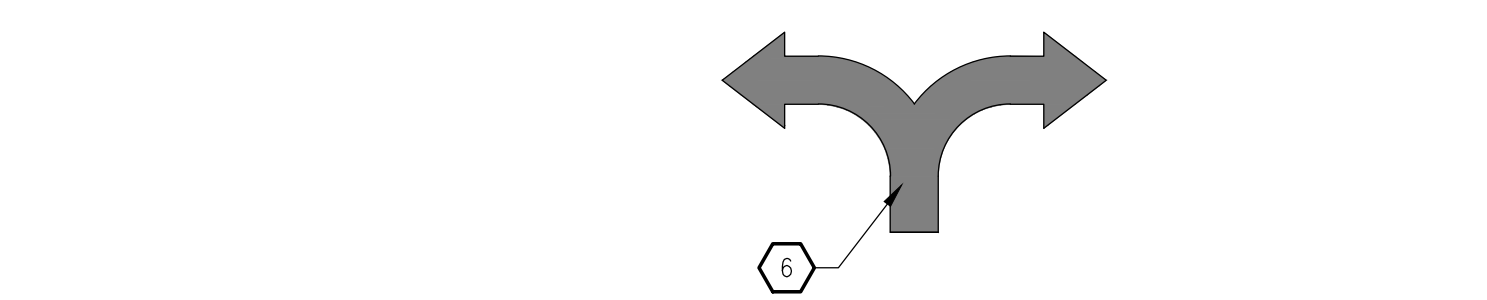
D3 STOP SIGN FACE DETAIL  
SCALE: NTS



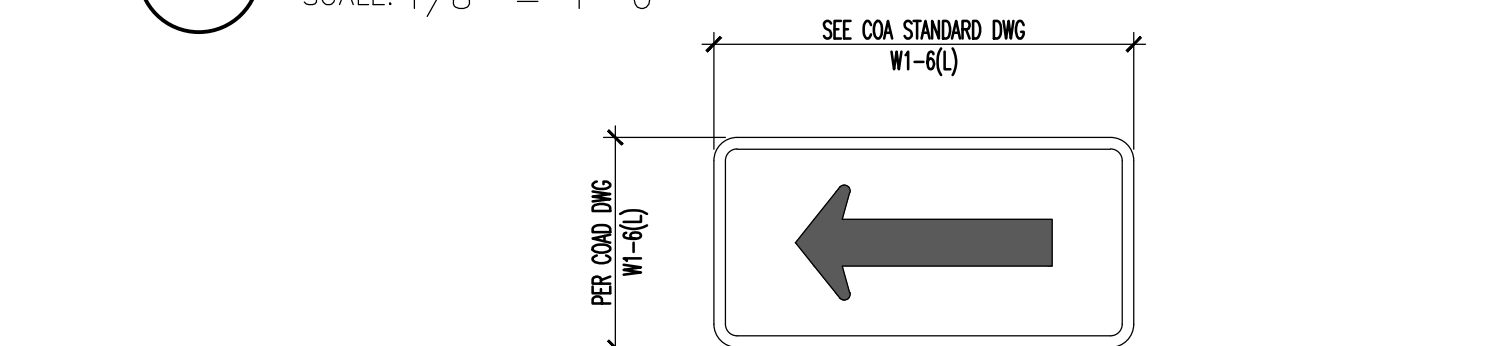
TRAFFIC CIRCULATION LAYOUT APPROVED  
01-29-2021

*Jeanne Wolfenbarger*

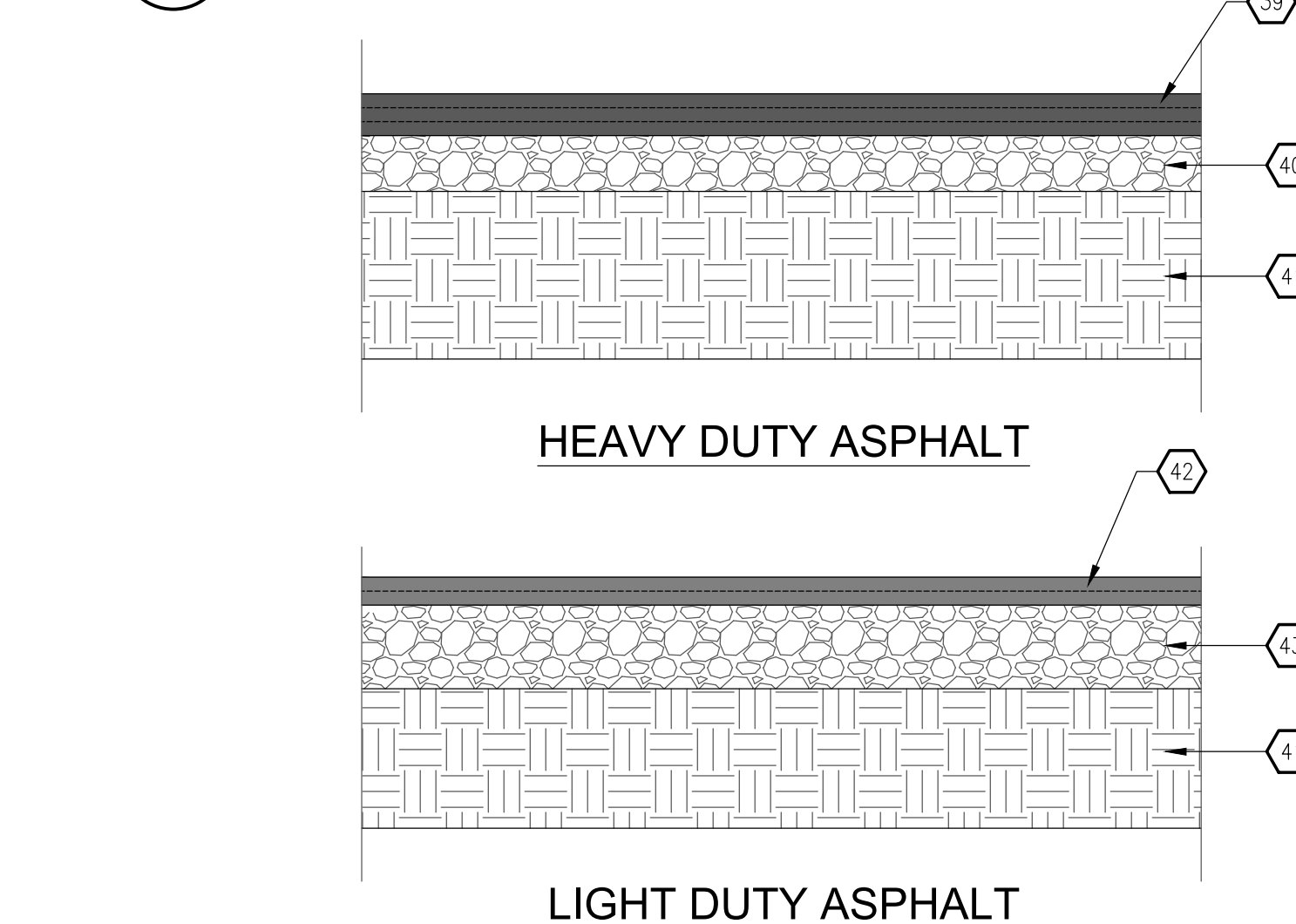
C3 DIRECTIONAL PAVEMENT MRKG  
SCALE: 1/2" = 1'-0"



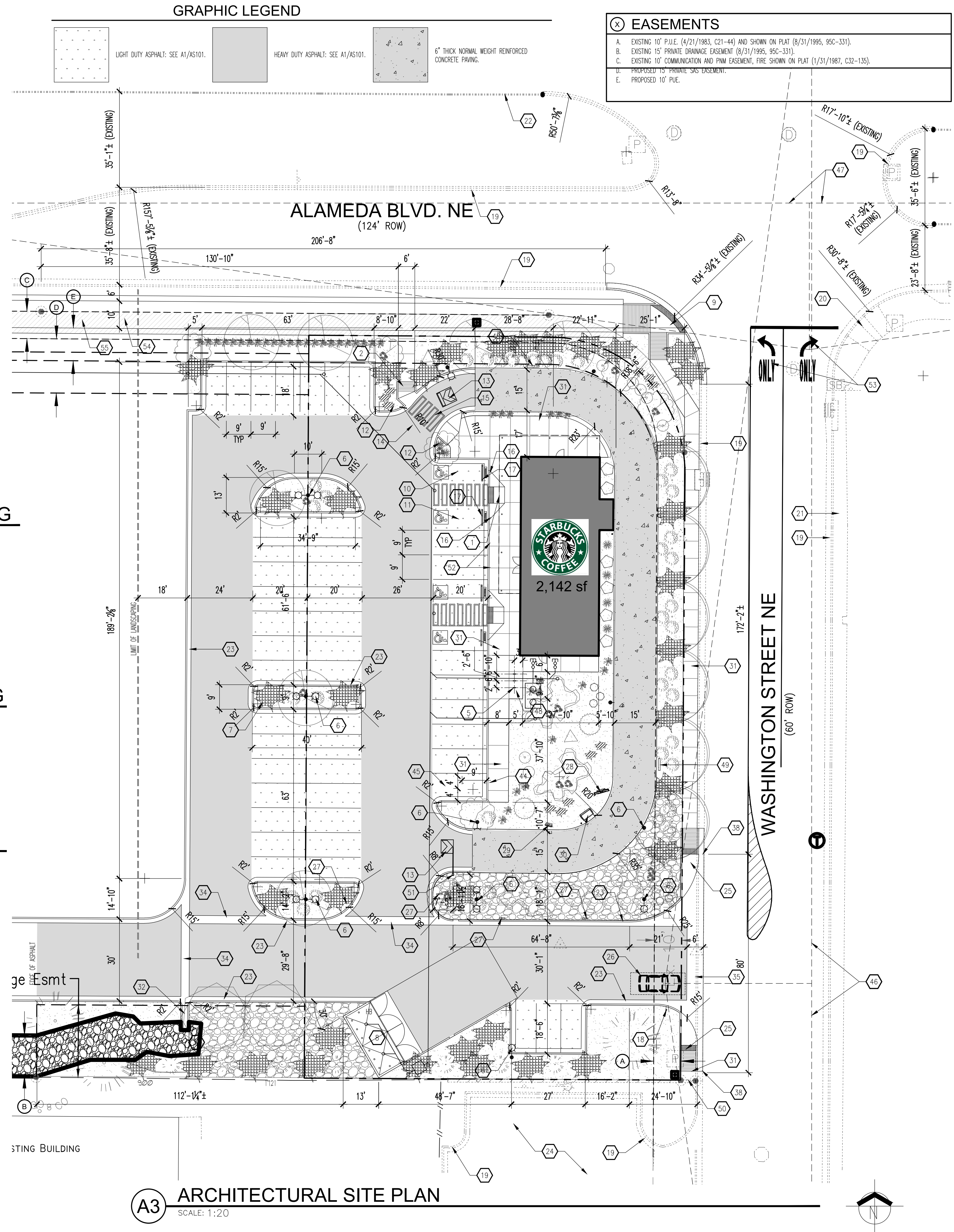
B2 SITE DIRECTIONAL PAVEMENT MARKING  
SCALE: 1/8" = 1'-0"



B1 'ONE WAY' FACE DETAIL  
SCALE: NTS



A1 ASPHALT - SECTIONS  
SCALE: 1" = 1'-0"

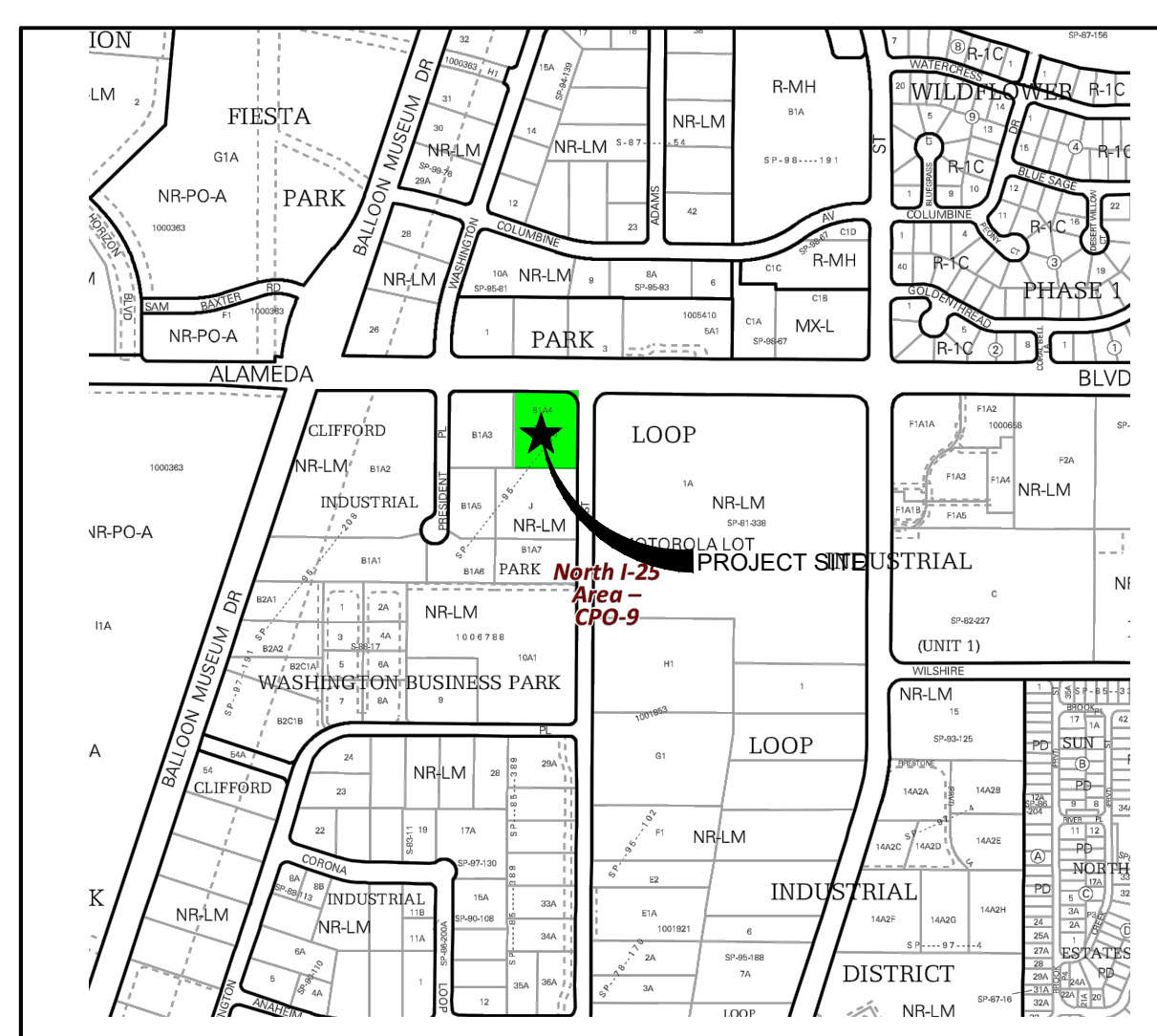


GRAPHIC LEGEND

⊗ EASEMENTS

- A. EXISTING 10' P.U.E. (4/21/1983, C21-44) AND SHOWN ON PLAT (8/31/1995, 95C-331).
- B. EXISTING 15' PRIVATE DRAINAGE EASEMENT (8/31/1995, 95C-331).
- C. EXISTING 10' PRIVATE DRAINAGE EASEMENT, FIRE SHOWN ON PLAT (1/31/1987, C32-135).
- D. PROPOSED 10' PRIVATE SAS EASEMENT.
- E. PROPOSED 10' P.U.E.

A3 ARCHITECTURAL SITE PLAN  
SCALE: 1:20



VICINITY MAP  
Zone Atlas Map C-17-Z  
LEGAL DESCRIPTION: TRACT B-1-A-3 AND B-1-A-4 OF THE PLAT OF TRACTS B-1-A-1 THRU B-1-A-7 AND TRACTS B-2-A-1 AND B-2-A-2, CLIFFORD INDUSTRIAL PARK, CITY OF ALBUQUERQUE, BERNALILLO COUNTY, NEW MEXICO, AS THE SAME ARE SHOWN AND DESIGNATED ON THE PLAT FILED IN THE OFFICE OF THE COUNTY CLERK OF BERNALILLO COUNTY, NEW MEXICO ON AUGUST 31, 1995, IN VOLUME 95C, FOLIO 331.

GENERAL NOTES

- A. 10" SERIES SHEETS APPLY TO THE ENTIRE SET OF DRAWINGS.
- B. INDICATED DIMENSIONS ARE TO FACE OF FINISH, UNLESS OTHERWISE NOTED.
- C. PARKING AN ACCESSIBLE PARKING MARKING AND STRIPPING SHALL CONFORM TO THE NEW MEXICO COMMERCIAL BUILDING CODE SECTION 1110.3.7.2.
- D. EXISTING BROKEN OR CRACKED SIDEWALK SHALL BE REPLACED WITH SIDEWALK AND CURB AND GUTTER.
- E. LANDSCAPING AND SIGNAGE WILL NOT INTERFERE WITH CLEAR SIGHT REQUIREMENTS. THEREFORE, SIGNS, WALLS, TREES, AND SHRUBS BETWEEN 3' AND 8' TALL (AS MEASURED FROM THE GUTTER PLANE) WILL NOT BE ACCEPTABLE IN THE CLEAR SIGHT TRIANGLE.

- KEYED NOTES
1. ADA FLARED RAMP: SEE A3/A1.1.
  2. CURBED RAMP: SEE A1/A1.1.
  3. END ISLAND RAMP: SEE C5/A1.1.
  4. RETENTION POND: SEE GRADING AND DRAINAGE PLAN ON SHEET C1.1.
  5. BIKE RACK: SEE B1/A1.2, TYPICAL OF (3).
  6. LIGHT POLE: SEE A5/A1.1.
  7. PARKING ISLAND: SEE C3/A1.1.
  8. REFUSE ENCLOSURE: SEE C3/A1.1.
  9. NEW ADA CURB RAMP: SEE A1/A1.1.
  10. HANDICAP PARKING SPACE: SEE A1/A1.2.
  11. HANDICAP "VAN" PARKING SPACE: SEE A3/A1.2.
  12. "DO NOT ENTER" SIGNAGE: SEE B3/A1.2.
  13. PAVEMENT MARKING: SEE C3/A5101.
  14. "DO NOT ENTER" PAVEMENT MARKING: SEE A1/A1.3.
  15. WALKWAY PAVEMENT MARKING: SEE C5/A1.2.
  16. HANDICAP SIGNAGE: SEE B4/A1.2.
  17. WHEEL STOP: SEE B5/A1.2, TYPICAL OF 12.
  18. STOP SIGN: SEE D3/A5101.
  19. EXISTING CURB AND GUTTER TO REMAIN (NIC).
  20. EXISTING ADA RAMP TO REMAIN (NIC).
  21. EXISTING CONCRETE SIDEWALK TO REMAIN (NIC).
  22. EXISTING CONCRETE CURB TO REMAIN (NIC).
  23. NEW CONCRETE CURB AND GUTTER: SEE B1/A1.1.
  24. EXISTING ASPHALT TO REMAIN (NIC).
  25. NEW END ISLAND ADA RAMP: SEE A4/A1.1.
  26. SITE DIRECTIONAL PAVEMENT MARKING: SEE B2/A5101.
  27. "DRIVE-THRU" SIGNAGE BY TENANT UNDER A SEPARATE CONTRACT: CONTRACTOR TO PROVIDE CONCRETE FOUNDATION AND ELECTRICAL POWER. SEE B2/A601.
  28. MENU BOARD BY TENANT UNDER A SEPARATE CONTRACT: CONTRACTOR TO PROVIDE ELECTRICAL POWER AND FOUNDATION.
  29. PRE-ORDER SIGNAGE BY TENANT UNDER A SEPARATE CONTRACT: CONTRACTOR TO PROVIDE ELECTRICAL POWER AND FOUNDATION.
  30. ORDER STATION BY TENANT UNDER A SEPARATE CONTRACT: CONTRACTOR TO PROVIDE ELECTRICAL POWER AND FOUNDATION.
  31. CONCRETE SIDEWALK: SEE B3/A1.1.
  32. CONCRETE FLUME: SEE GRADING PLAN ON SHEET C1.1.
  33. RETENTION POND: REFER TO GRADING PLAN ON SHEET C1.1.
  34. VALLEY GUTTER: SEE GRADING PLAN ON SHEET C1.1.
  35. NEW 6" CONCRETE GUTTER: TIE INTO EXISTING CURB AND GUTTER - REFER TO COA STANDARD DRAWING #2420.
  36. WHITE PAINT: SEE DETAILS FOR THICKNESS.
  37. PROVIDE A BACK SLOPE OF 4:1 TO THE EDGE OF RAMP TO EXISTING SURFACE.
  38. THE NEW VALLEY GUTTER TO EXISTING CURB AND GUTTER AT THIS POINT.
  39. 3" ASPHALT CONCRETE PAVEMENT.
  40. 4" BASE COURSE.
  41. 10" COMPACTED SUBGRADE @ 95% WITH R-VALUE OF 50.
  42. 2" ASPHALT CONCRETE PAVEMENT.
  43. 6" BASE COURSE.
  44. MOTOR CYCLE PARKING SIGNAGE: SEE B2/A1.2, TYPICAL OF (2).
  45. DEDICATED MOTOR CYCLE PARKING SPACE, TYPICAL OF (2): PROVIDE "MOTOR CYCLE PARKING" PAVEMENT MARKING IN WHITE.
  46. DASHED LINE INDICATES CLEAR SIGHT TRIANGLE WITH A 350' CLEAR SIGHT DISTANCE. SEE GENERAL NOTE "E" ABOVE.
  47. DASHED LINE INDICATES CLEAR SIGHT TRIANGLE WITH A 450' CLEAR SIGHT DISTANCE. SEE GENERAL NOTE "E" ABOVE.
  48. DASHED LINE INDICATES A 1' CLEARANCE AROUND BIKE PARKING SPACES (MINIMUM OF 6' L X 2' W).
  49. "ONE WAY" SIGNAGE: CONTRACTOR TO PROVIDE 12" DIAMETER BY 24" DEEP CONCRETE FOOTING. SEE B1/A5101.
  50. PROVIDE A BACK SLOP OF 5:1 TO THE EDGE OF SIDEWALK TO EXISTING SURFACE ON THE SOUTH.
  51. CLEARANCE HEIGHT BAR BY TENANT UNDER A SEPARATE CONTRACT: CONTRACTOR TO PROVIDE CONCRETE FOUNDATION. SEE B3/A601.
  52. MOBILE ORDER PAY (MOP) SIGNAGE.
  53. NEW DIRECTIONAL PAVEMENT MARKING PER COA STANDARD.
  54. 10' WIDE TRAIL.
  55. SHADED AREA INDICATES 8' ROW DEDICATION.

| PARKING CALCULATION                        |             |                          |           |
|--|-------------|--------------------------|-----------|
| BUILDING AREA                              | # SEATS     | AREA (GROSS SQUARE FEET) |           |
| STARBUCKS COFFEE SHOP                      |             | 2,142 SF                 |           |
| TOTAL                                      |             |                          |           |
| PARKING REQUIREMENTS                       | RATIO       | REQUIRED                 | PROVIDED  |
| STARBUCKS COFFEE SHOP                      | 8/1,000 GFA | 18 SPACES                | 52 SPACES |
| ACCESSIBLE PARKING SPACE                   | ---         | 3 SPACES                 | 4 SPACES  |
| MOTORCYCLE PARKING SPACE (IDO TABLE 5-5-4) | ---         | 1 SPACES                 | 2 SPACES  |
| BIKE PARKING SPACE (IDO TABLE 5-5-5)       | ---         | 3 SPACES                 | 9 SPACES  |

REVISION

| REV | DATE | BY |
|-----|------|----|
| 1   |      |    |
| 2   |      |    |
| 3   |      |    |
| 4   |      |    |
| 5   |      |    |

MODULUS ARCHITECTS

100 SUN AVENUE N.E., Ste 305  
ALBUQUERQUE, NEW MEXICO 87109

PHONE (505) 338-1499 FAX (505) 338-1498

STATE OF NEW MEXICO

STEPHEN A. DUNBAR

No. 4218

REGISTERED ARCHITECT

04 DEC 2020

PROJECT TITLE  
STARBUCKS  
8721 WASHINGTON STREET NE  
ALBUQUERQUE, NEW MEXICO 87113

DRAWN BY:  
DEVIN NGUYEN

JOB NO.  
ABO

SHEET TITLE  
ARCHITECTURAL SITE PLAN

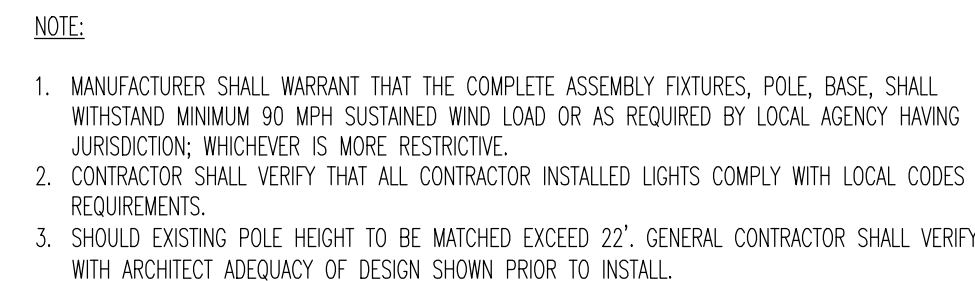
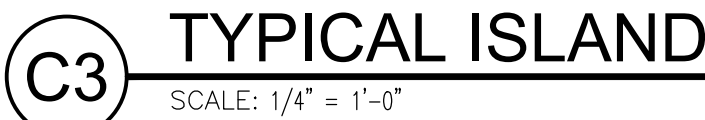
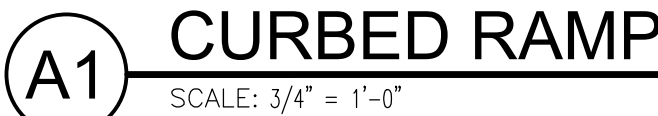
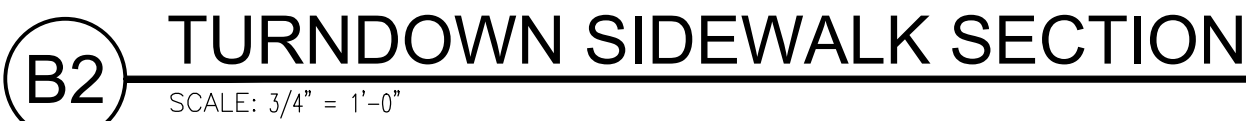
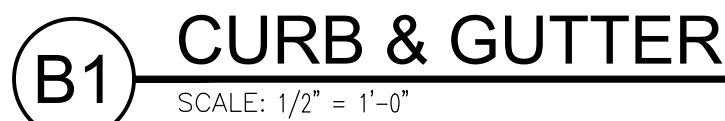
DATE  
30.07.2020

SCALE  
AS NOTED

SHEET  
AS101



Jeannette Wolfenbarger

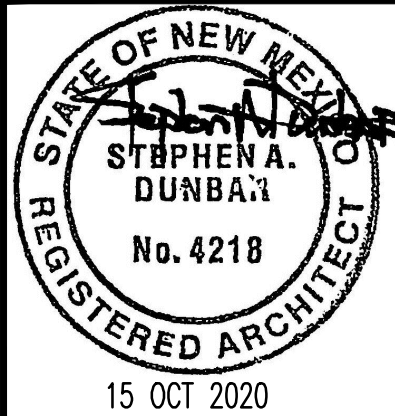


A. "G" SERIES SHEETS APPLY TO THE ENTIRE SET OF DRAWINGS.

4. 4" THICK PAVEMENT MARKING; WHITE IN COLOR.
5. 2" WIDE ADA APPROVED TRUNCATED DOME STRIP.
6. CURB AND GUTTER: SEE B1/A1.1.
7. CONCRETE SIDEWALK: SEE B3/A1.1.
8. CONCRETE EXPANSION JOINT: SEE B5/A1.1.
9. CONCRETE CONTROL JOINT: SEE B5/A1.1.
10. BROOM FINISH CONCRETE SURFACE AREA INSTEAD OF TOOLED EDGE TO CREATE PICTURE FRAME EFFECT.
11. SMOOTH TOOLED FINISH AROUND EDGES, TYPICAL.
12. MONOLITHIC CONCRETE HANDICAP RAMP INTEGRALLY COLORED DAVIS COLORS #160 "BRICK RED"; SMOOTH TEXTURE.
13. FINISH WITH 1/2" DEEP X 1/2" WIDE GROOVES AT 2' OC.
14. CONCRETE CURB WITH PAVEMENT.
15. CURB, BEYOND.
16. 2% CROSS SLOPE, MAXIMUM.
17. RAMP, BEYOND.
18. RETAINING CURB.
19. SUBGRADE: COMPACTED AS SPECIFIED.
20. PAVEMENT AS SPECIFIED.
21. CONCRETE TURNDOWN CURB.
22. 4" THICK CONCRETE SIDEWALK.
23. SIDEWALK ELEVATIONS VARY - HOLD FLUSH WITH FINISHED FLOOR AT ENTRANCE WAYS. PLANTING AREAS MAY EXIST BETWEEN THE BUILDING AND THE BACK-OF-SIDEWALK (SEE SITE PLAN). EXPANSION JOINTS DO NOT APPLY TO SIDEWALK SECTION ADJACENT TO PLANTING AREAS.
24. 1/2" EXPANSION JOINT MATERIAL.
25. STABILIZED AGGREGATE BASE, COARSE, AS SPECIFIED.
26. STRUCTURAL FOUNDATION SYSTEM: SEE STRUCTURAL FOUNDATION PLAN.
27. CONCRETE CURB AND GUTTER.
28. SQUARE, STRAIGHT, STEEL ANCHOR BASE POLE. POLE & BRACKETS SHALL BE FACTORY FINISHED, PAINTED SEMI GLOSS BLACK W/RAIL POLES FOR SHIPPING. PROVIDE 1 QT. MATCHING PAINT TO TOUCH ANY SCRATCHES ON POLES ON JOB. SEE LIGHT FIXTURE SCHEDULE FOR SPECIFICATIONS.
29. CONNECT GROUND WIRE TO REINFORCING BARS.
30. (3) #3 TIES AT 1/2" OC IN TOP 5".
31. #6 BARE COPPER GROUND WIRE.
32. CONDUIT AS INDICATED ON ELECTRICAL PLAN.
33. (6) #6 BARS VERTICAL.
34. 8"-Ø" COPPER WELD GROUND ROD BY ELECTRICAL CONTRACTOR.
35. NON-SHRINK GROUT.
36. 2" CHAMFER.
37. FINISHED GRADE.
38. #3 TIES Ø 12" OC.
39. 6" RETAINING CURB.
40. MONOLITHIC INTEGRALLY COLORED CONCRETE HANDICAP RAMP (4,000 PSI): PROVIDE ARCHITECT WITH SAMPLE COLOR FOR APPROVAL.
41. PROVIDE 1/2" DEEP BY 1/2" WIDE GROOVES Ø 2" OC. EXTEND THE PULL WIDTH AND DEPTH OF THE RAMP.
42. 6" STANDARD CURB OR CURB AND GUTTER AS APPLICABLE (SEE SITE PLAN).
43. PROVIDE ADA APPROVED TRUNCATED DOME AT 2" WIDTH.
44. EXPANSION JOINT.
45. WIDTH VARIES (6" MINIMUM): SEE SITE PLAN.
46. PROVIDE A 5' S/L LAND AT TOP OF RAMP FOR CHANGE IN DIRECTION.
47. WIDTH VARIES: SEE SITE PLAN (MINIMUM 5' WIDTH).

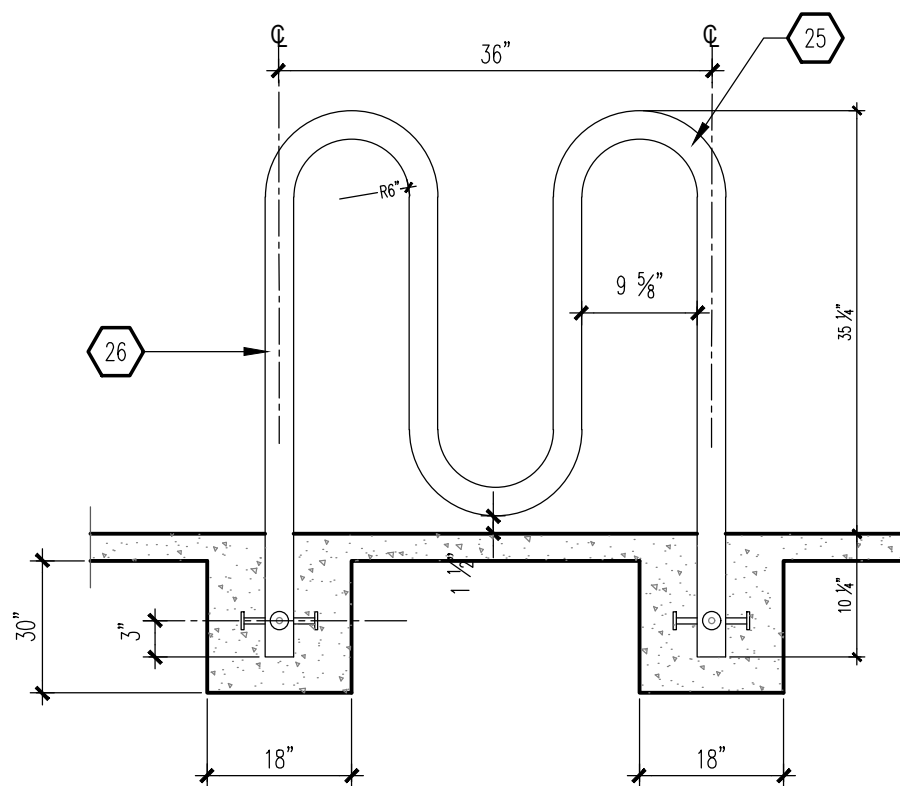
| REV            | DATE | BY | REVISION |
|----------------|------|----|----------|
| △ <sub>4</sub> |      |    |          |
| △ <sub>5</sub> |      |    |          |
| △ <sub>4</sub> |      |    |          |
| △ <sub>5</sub> |      |    |          |
| △ <sub>4</sub> |      |    |          |
| △ <sub>4</sub> |      |    |          |

**MODULUS ARCHITECTS**  
100 SUN AVENUE N.E., Ste 305  
ALBUQUERQUE, NEW MEXICO 87109  
PHONE (505) 338-1499 FAX (505) 338-1498

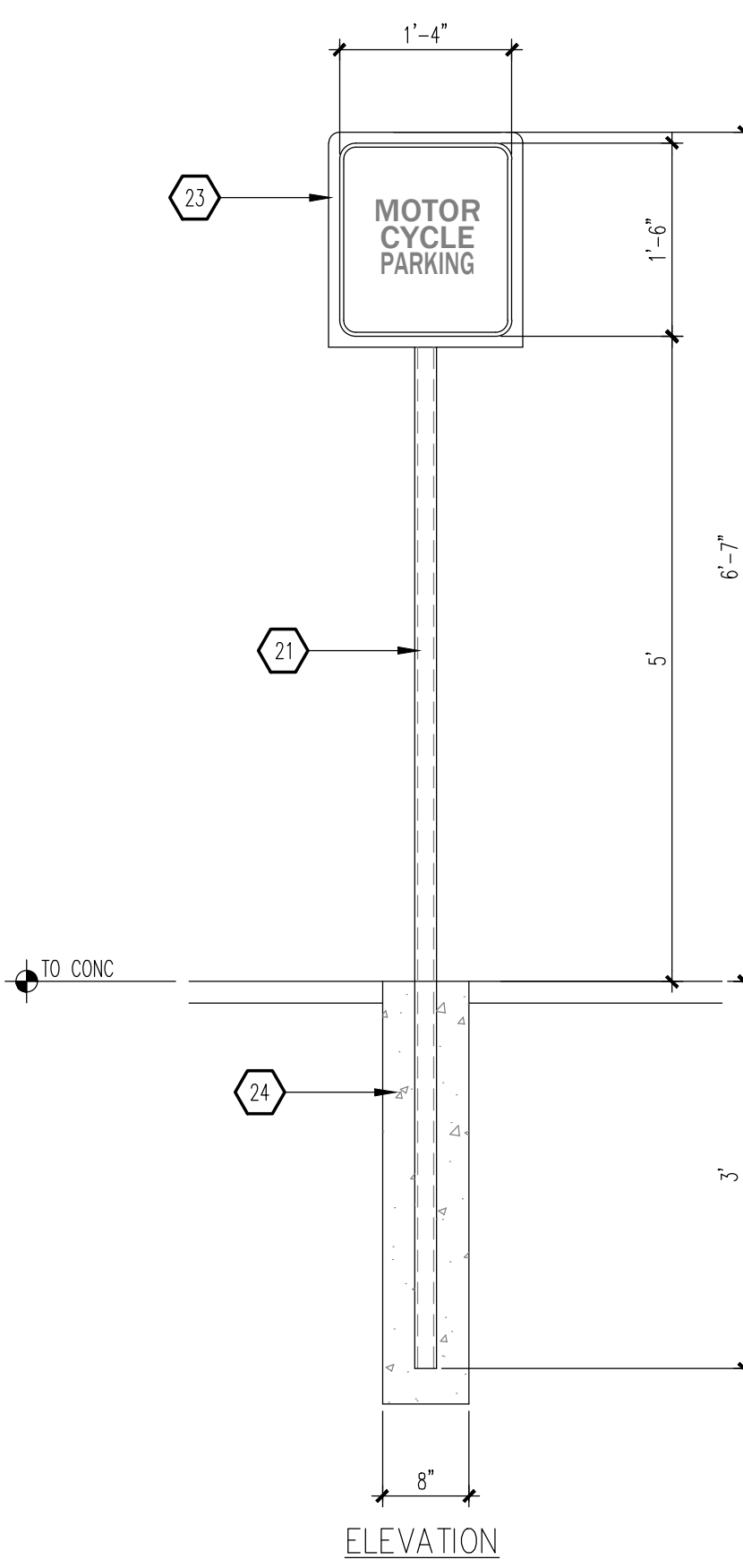


|  |  |                       |  |                         |  |
|--|--|-----------------------|--|-------------------------|--|
| PROJECT TITLE<br><b>STARBUCKS</b><br><b>ALAMEDA &amp; WASHINGTON</b><br><b>ALBUQUERQUE, NEW MEXICO 87XXX</b> |  | JOB NO.<br><b>480</b> |  | DRAWN BY:<br><b>DIN</b> |  |
| PROJECT MANAGER<br><b>DEVIN NGUYEN</b>   |  | SITE DETAILS          |  |                         |  |
| SHEET TITLE  |  |                       |  |                         |  |
| DATE<br><b>30.07.2020</b>  |  | sheet-                |  |                         |  |
| SCALE<br><b>AS NOTED</b>   |  | <b>A1.1</b>           |  |                         |  |
|  |  | of-                   |  |                         |  |

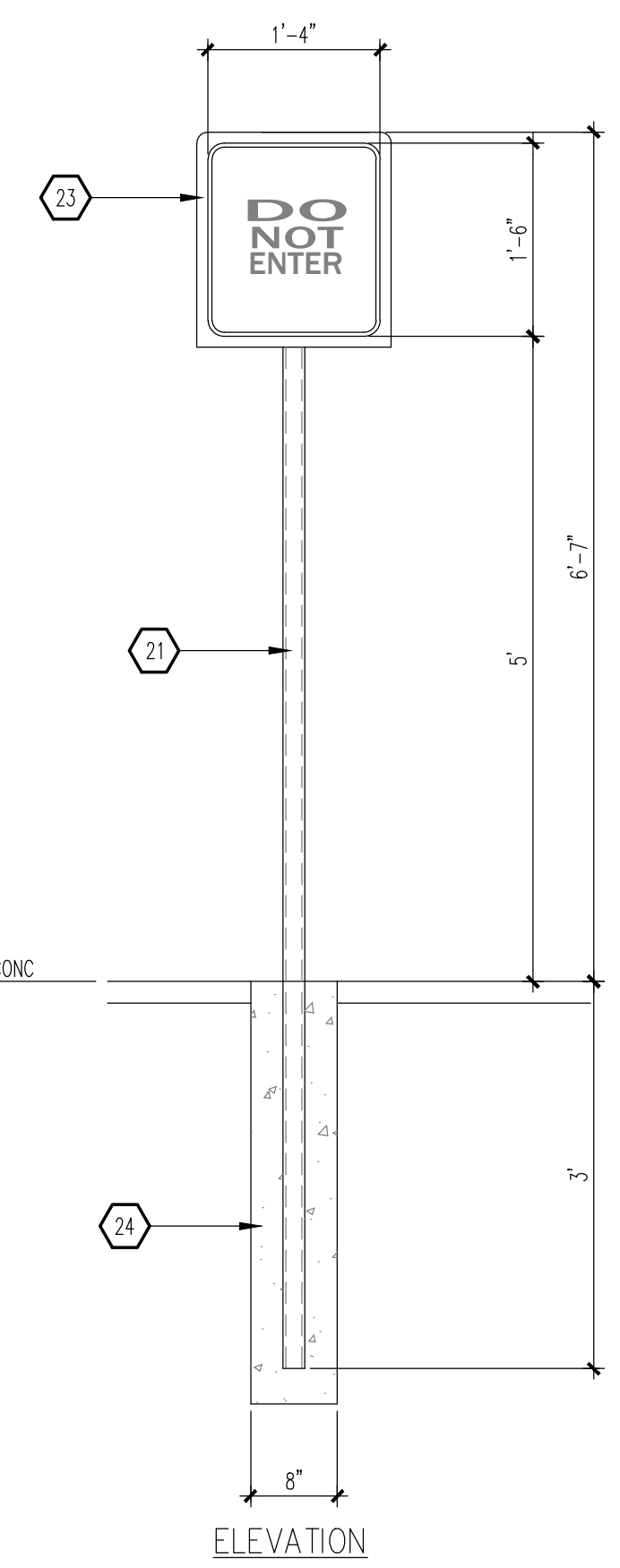
Jeanne Wolfenbarger



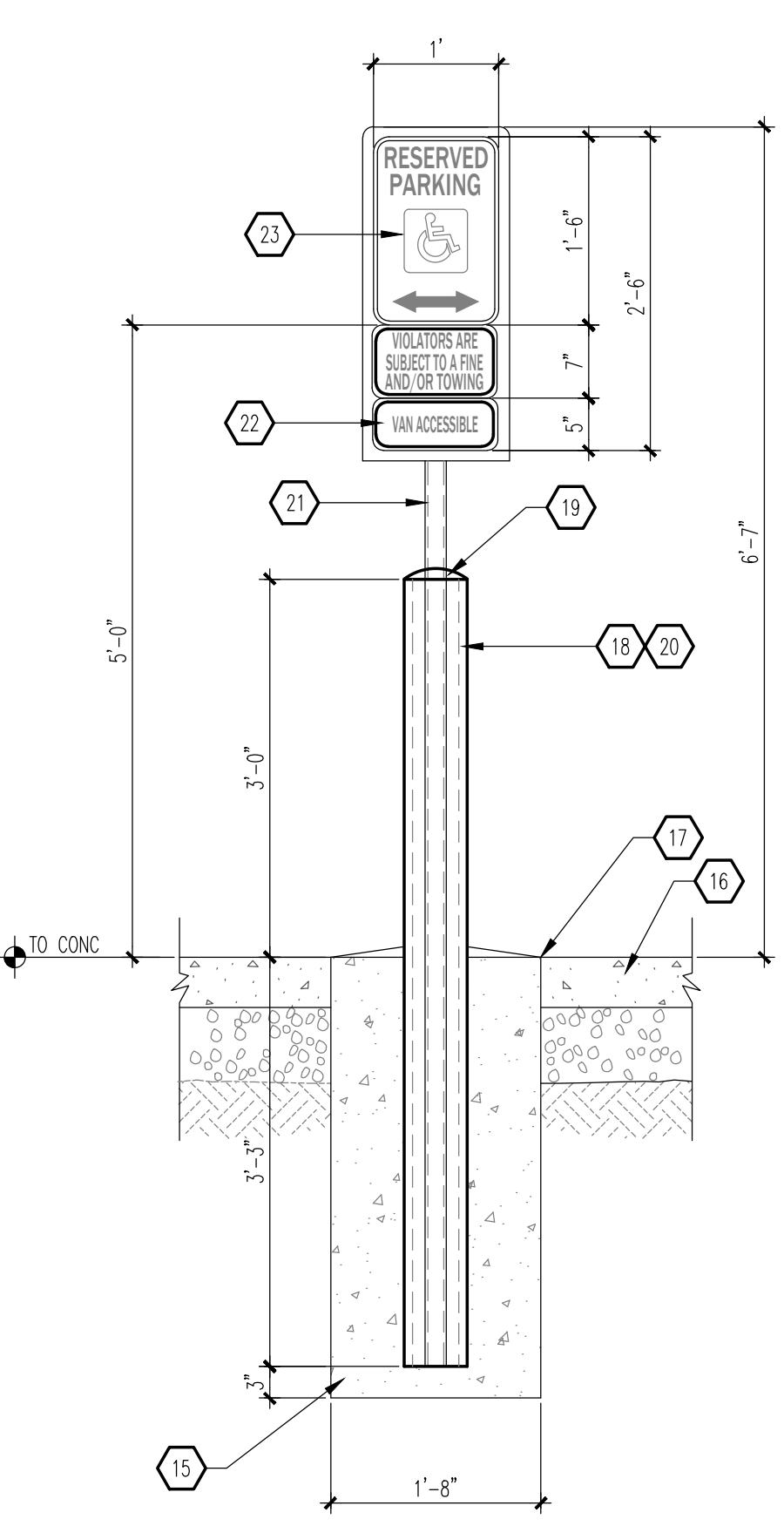
**B1** BIKE RACK  
SCALE: 1/2" = 1'-0"



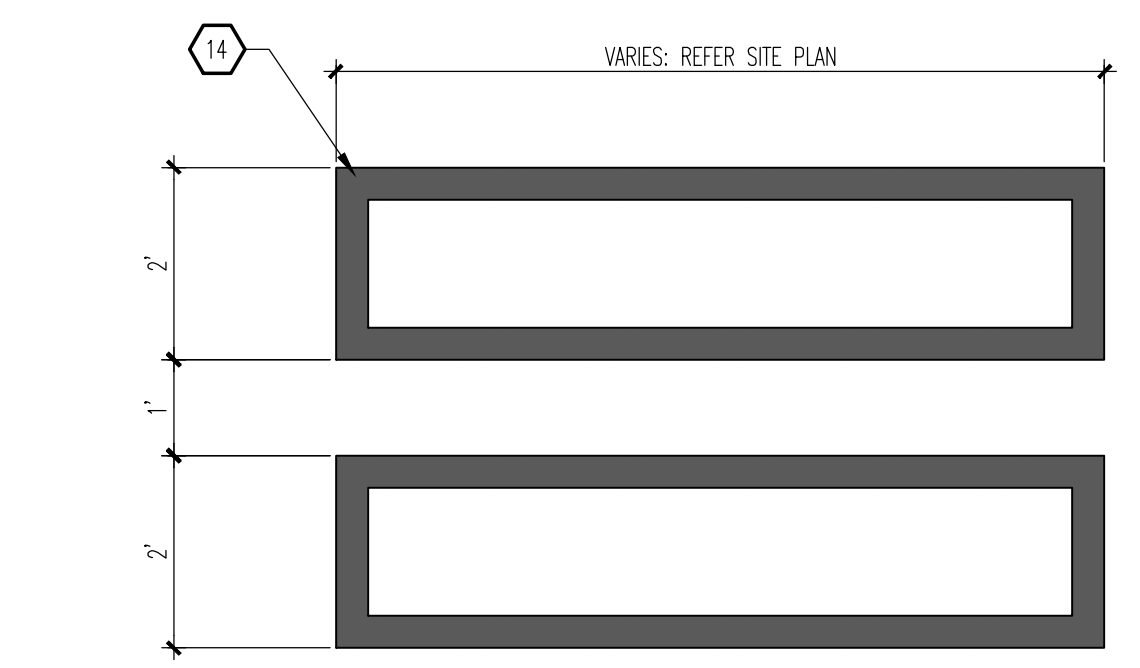
**B2** MICS. SIGNAGE  
SCALE: 3/4" = 1'-0"  
NOTE:



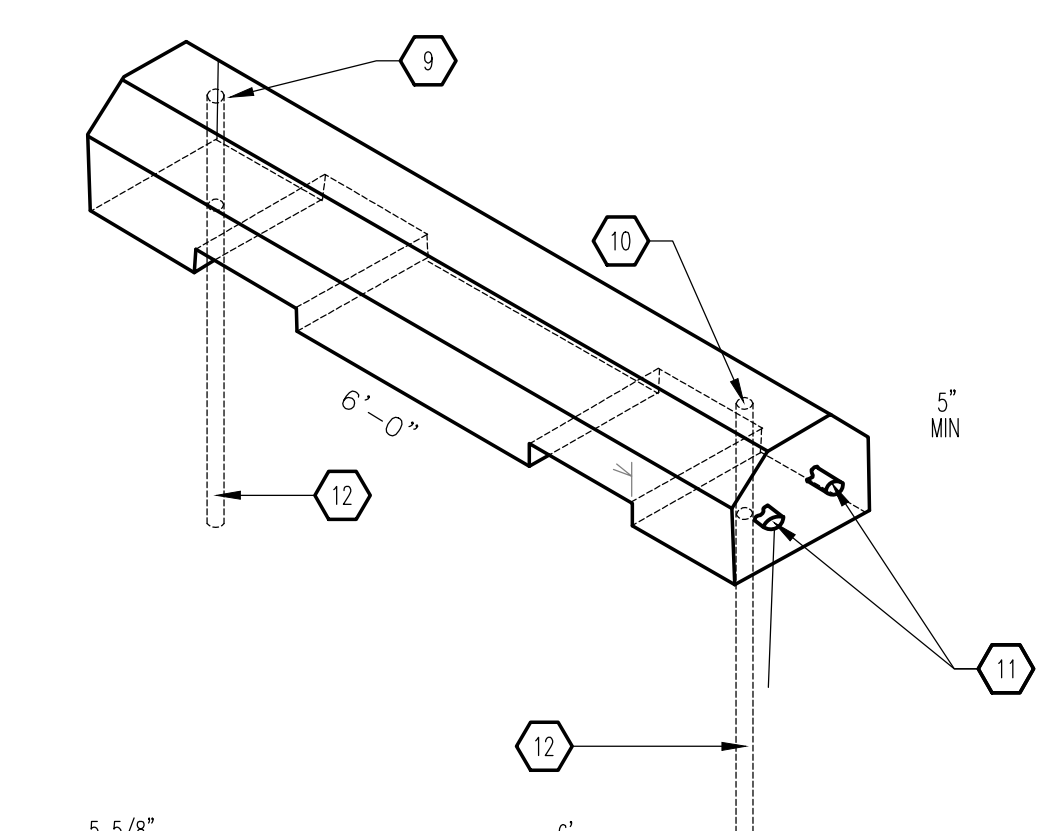
**B3** MISC. SIGNAGE  
SCALE: 3/4" = 1'-0"



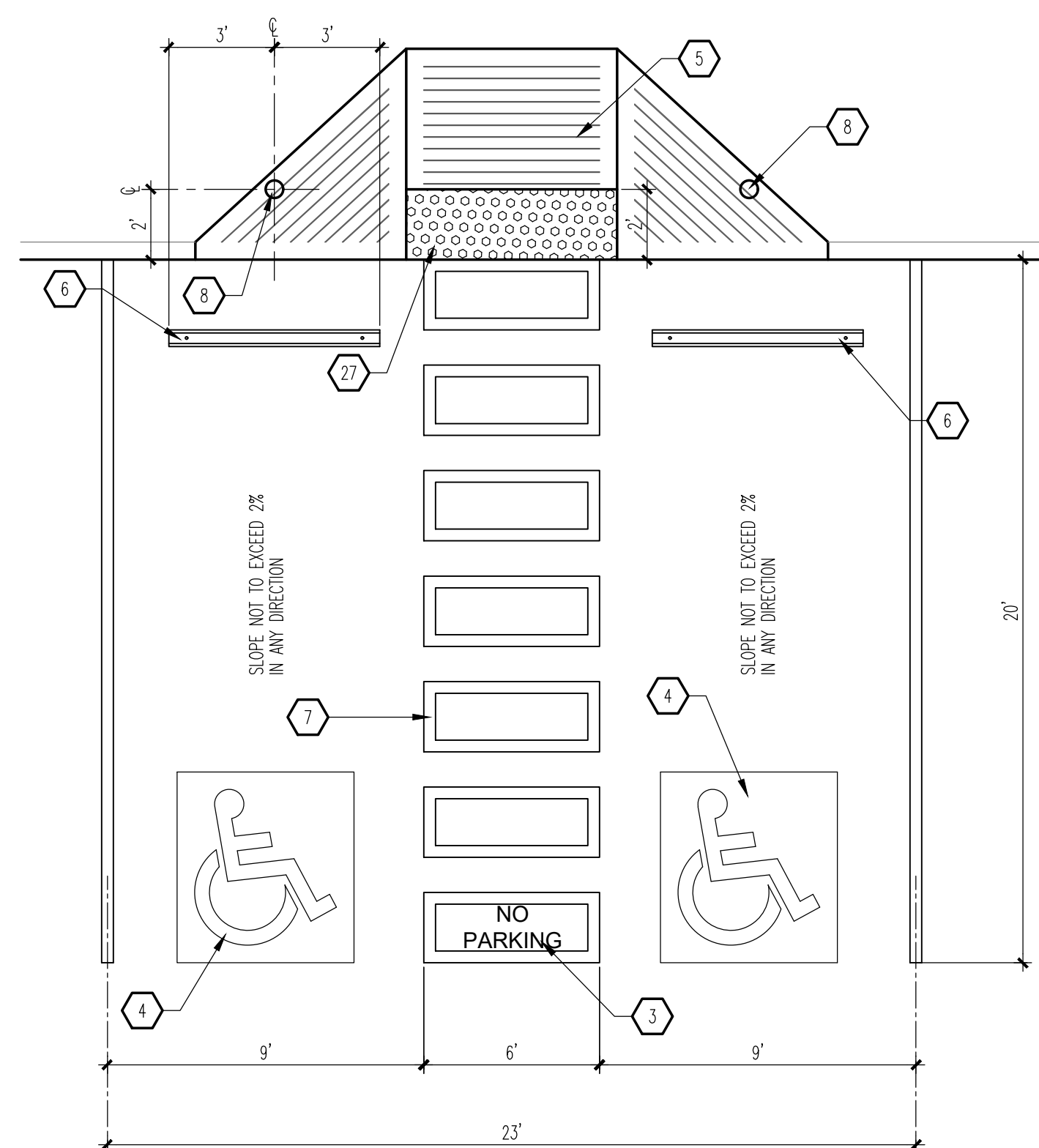
**B4** MISC. SIGNAGE  
SCALE: 3/4" = 1'-0"  
NOTE:



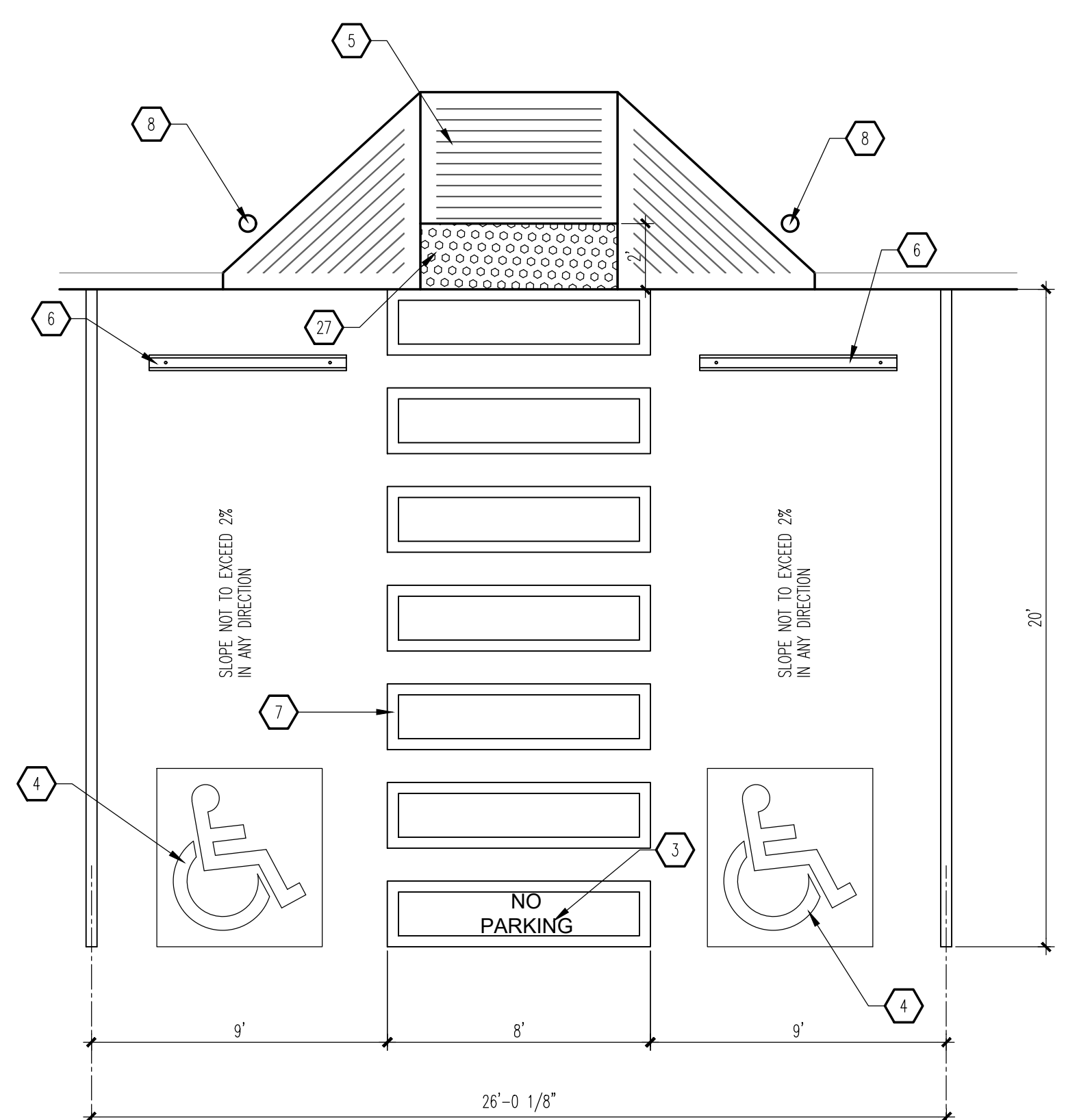
**C5** WALKWAY PAVEMENT MARKING  
SCALE: 1/2" = 1'-0"



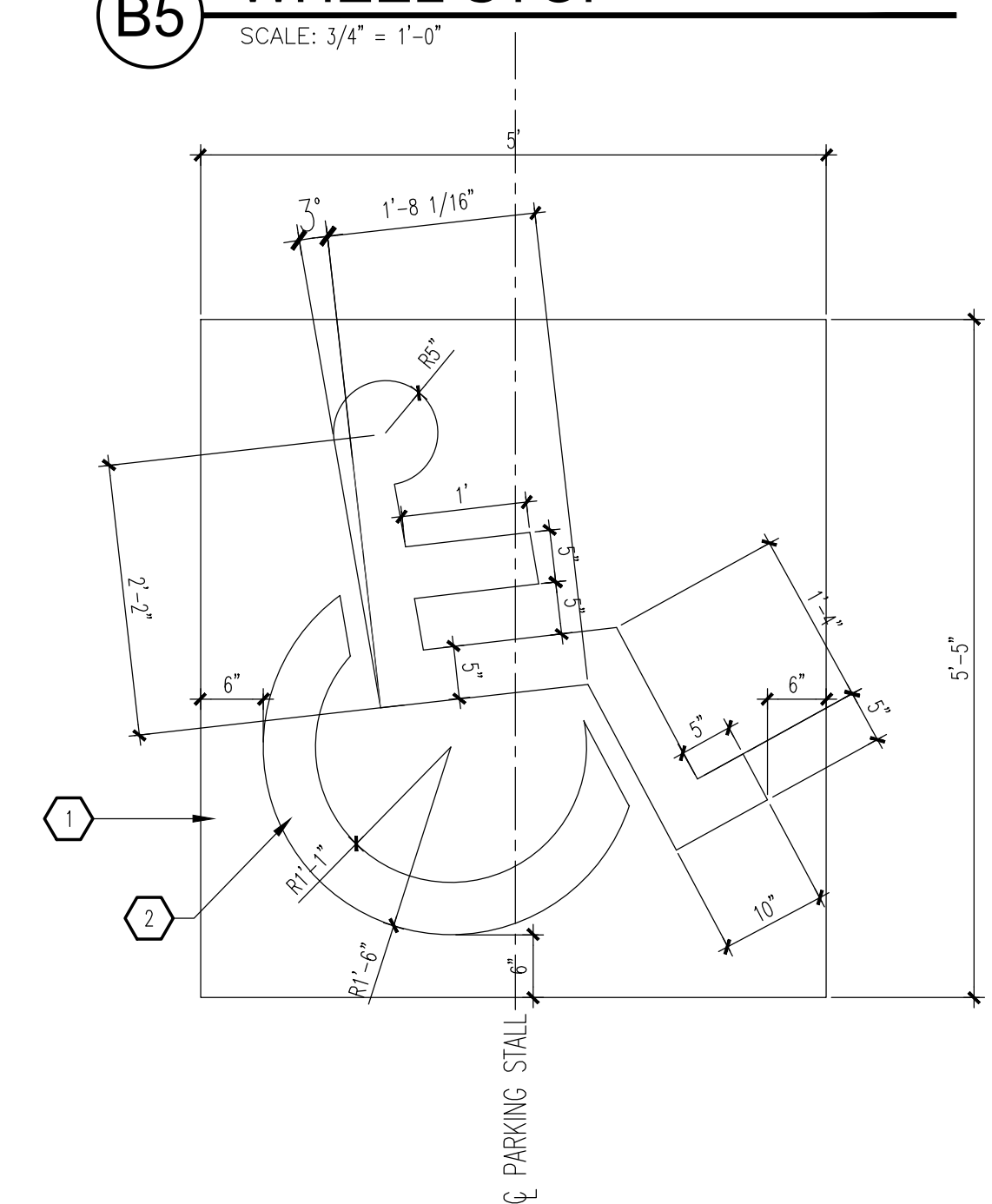
**B5** WHEEL STOP  
SCALE: 3/4" = 1'-0"



**A1** HC PARKING PLAN  
SCALE: 1/4" = 1'-0"



**A3** HC PARKING PLAN (VAN ACCESSIBLE)  
SCALE: 1/4" = 1'-0"



**A5** HANDICAP SIGNAGE  
SCALE: 3/4" = 1'-0"

GENERAL NOTES

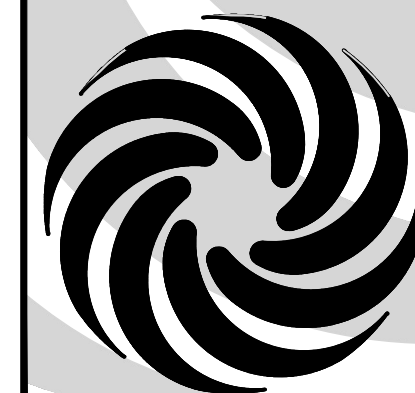
A. "G" SERIES SHEETS APPLY TO THE ENTIRE SET OF DRAWINGS.

KEYED NOTES

1. PAINT BLUE.
2. PAINT WHITE.
3. 12" HIGH BY 4" WIDE "NO PARKING" MARKING - WHITE PAINT.
4. HANDICAP PAVEMENT MARKING: SEE A5/A1.2.
5. FLARED RAMP: SEE A3/A1.1.
6. WHEEL STOP: SEE B5/1.2.
7. WALKWAY PAVEMENT MARKING: SEE C5/A1.2.
8. HANDICAP POST SIGNAGE: SEE B4/A1.2.
9. TOP OF REINFORCING BAR FLUSH WITH TOP OF CONCRETE.
10. 3/8" DIAMETER HOLE.
11. (2) #4 BARS CONTINUOUS.
12. 3/4" REINFORCING BAR EMBEDDED 24" INTO SUBGRADE.
13. #5 REINFORCING BAR.
14. 4" WIDE WHITE PAINTED STRIPING.
15. 3,500 PSI CONCRETE FOUNDATION.
16. FINISHED SURFACE.
17. BITUMINOUS JOINT FILLER (CONCRETE PAVEMENT ONLY).
18. 6" DIAMETER STEEL PIPE FILLED WITH CONCRETE.
19. ROUND CONCRETE TOP.
20. PAINT SAFETY YELLOW.
21. 2" OD GALVANIZED STEEL SIGN POST.
22. "VAN ACCESSIBLE" SIGN WHERE INDICATED ON SITE PLAN.
23. 3/8" STEEL PLATE WITH CONTINUOUS WELD ALONG INTERSECTION OF PIPE POST AND PLATE.
24. CONCRETE FOUNDATION.
25. PRIME AND PAINT STEEL MEMBER FLAT BLACK.
26. 2 3/8" STANDARD DUTY PIPE CENTER SUPPORT.
27. ADA APPROVED TRUNCATED DOME STRIP.

| REVISION |  | BY | DATE | REV |
|----------|--|----|------|-----|
|          |  |    |      |     |
|          |  |    |      |     |
|          |  |    |      |     |
|          |  |    |      |     |
|          |  |    |      |     |
|          |  |    |      |     |
|          |  |    |      |     |
|          |  |    |      |     |
|          |  |    |      |     |

**MODULUS ARCHITECTS**  
100 SUN AVENUE N.E., Ste 305  
ALBUQUERQUE, NEW MEXICO 87109  
PHONE (505) 338-1499 FAX (505) 338-1498

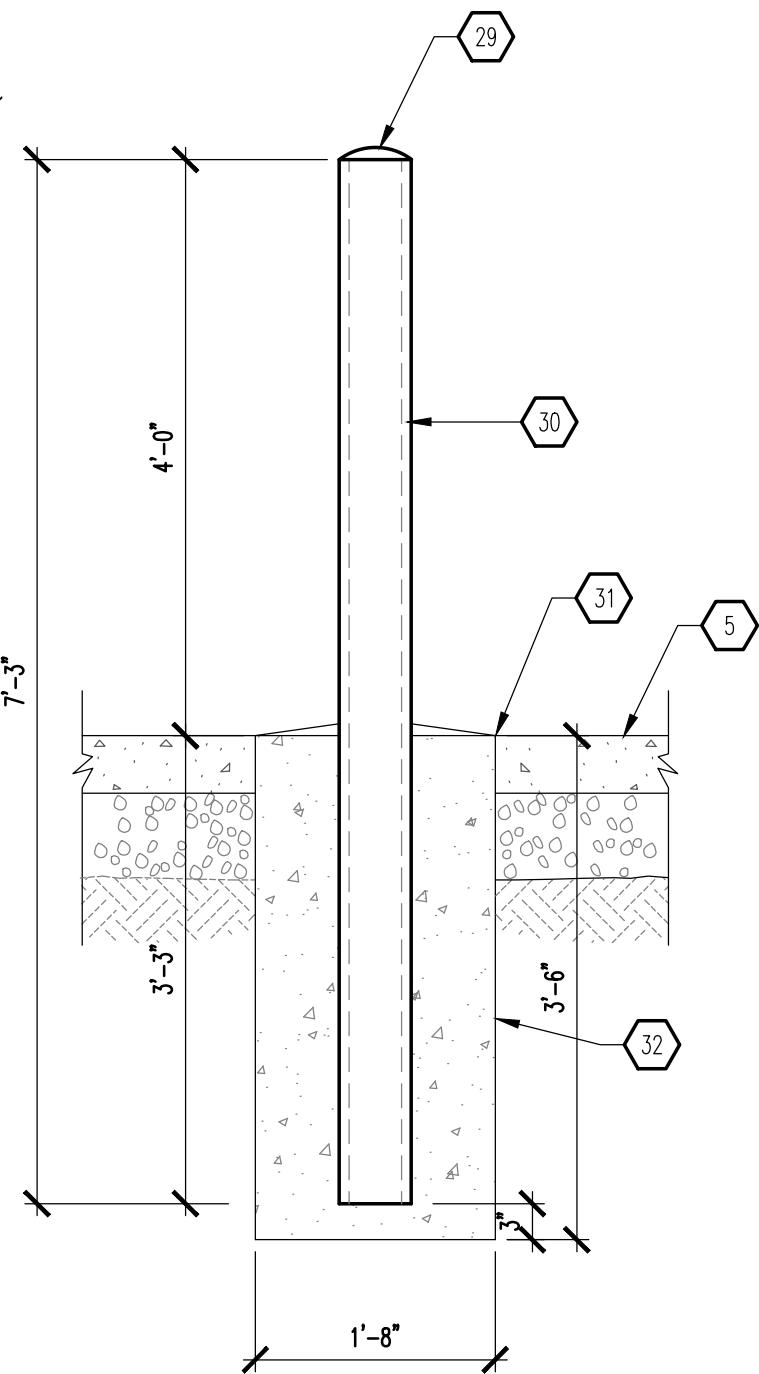


STATE OF NEW MEXICO  
STEPHEN A. DUNBAR  
No. 4218  
REGISTERED ARCHITECT  
15 OCT 2020

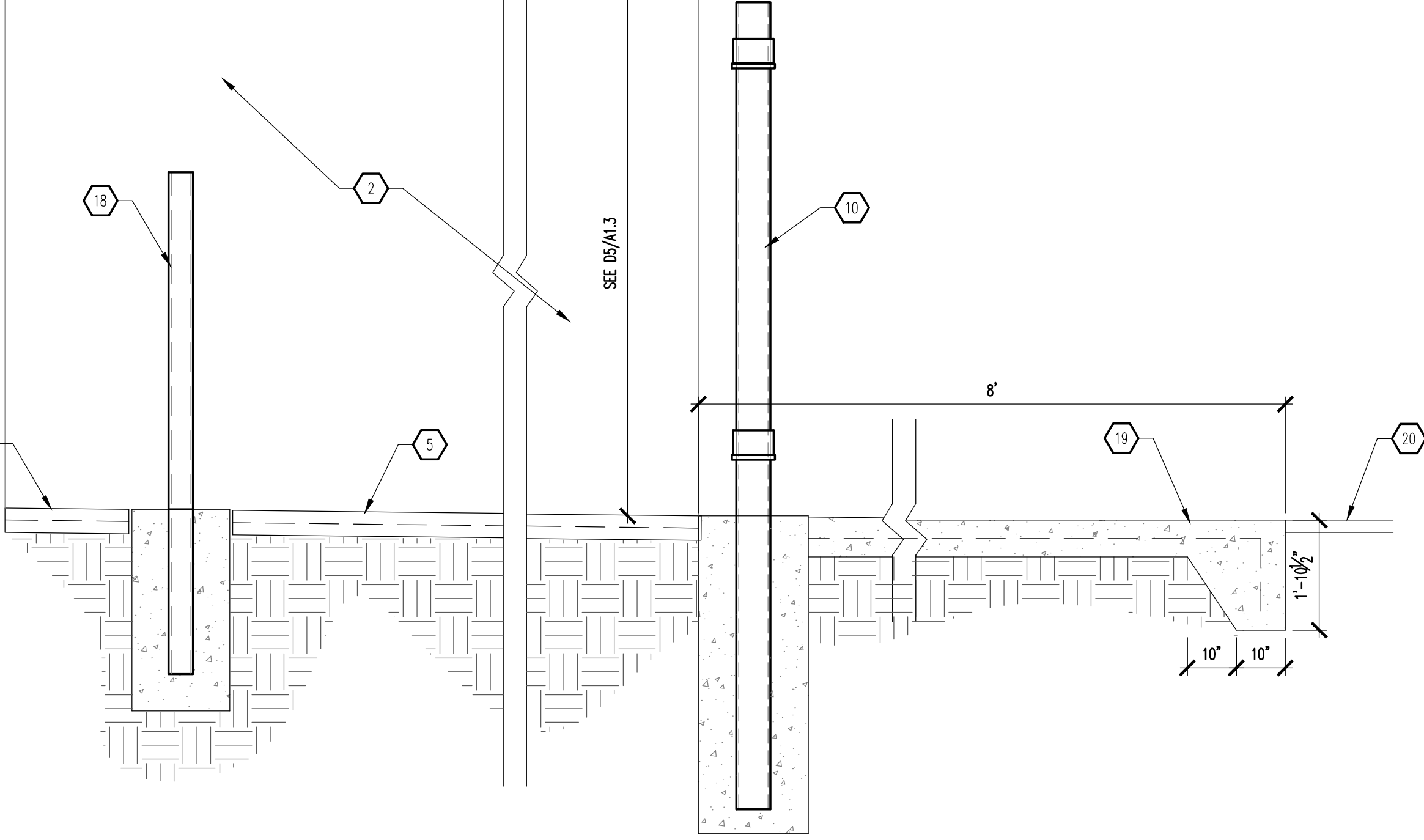
PROJECT TITLE: STARBUCKS  
ALAMEDA & WASHINGTON  
ALBUQUERQUE, NEW MEXICO 87XXX  
PROJECT MANAGER: DEVIN NGUYEN  
DRAWN BY: DIN  
JOB NO. 480  
SHEET TITLE: SITE DETAILS

DATE: 30.07.2020  
SCALE: AS NOTED  
sheet: A1.2  
of:

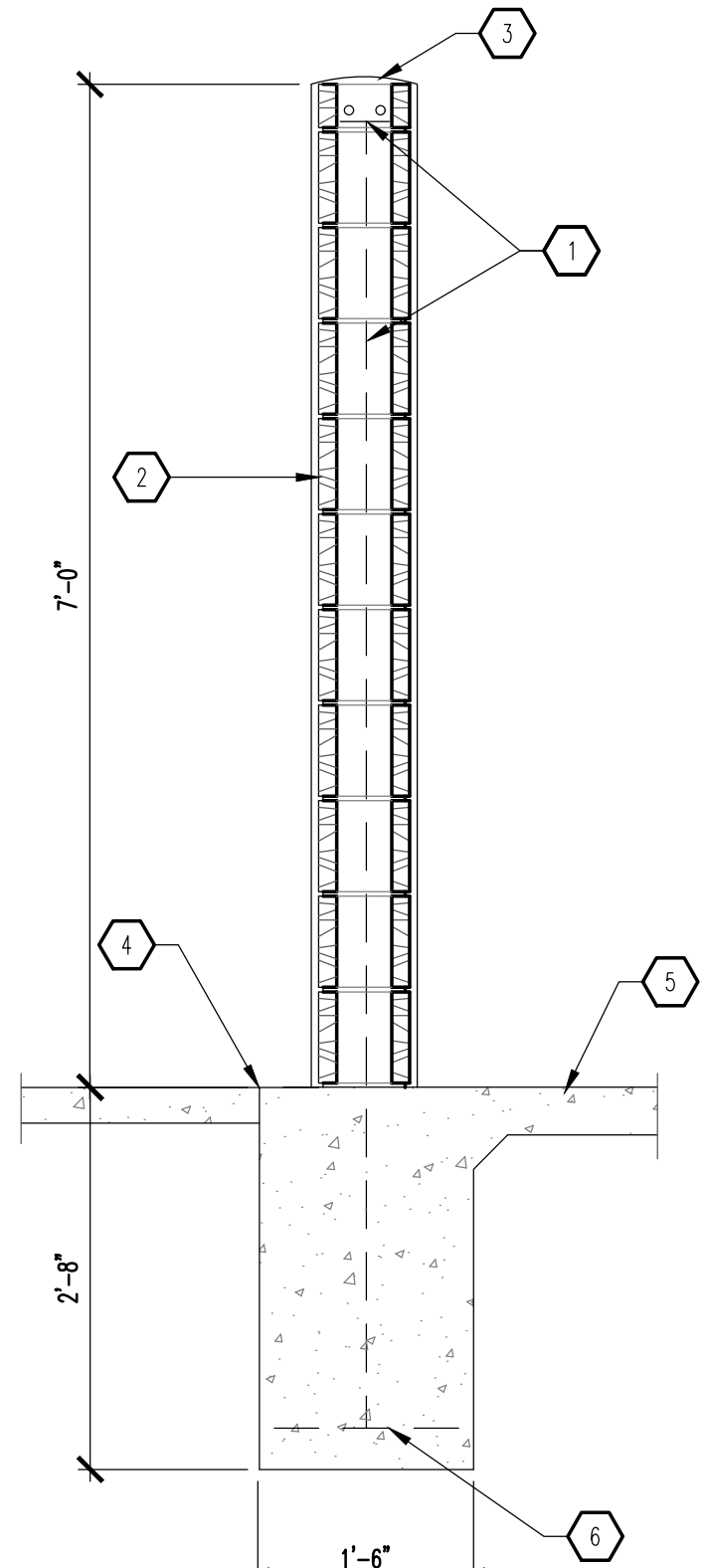
Jeanna Wolfenbarger



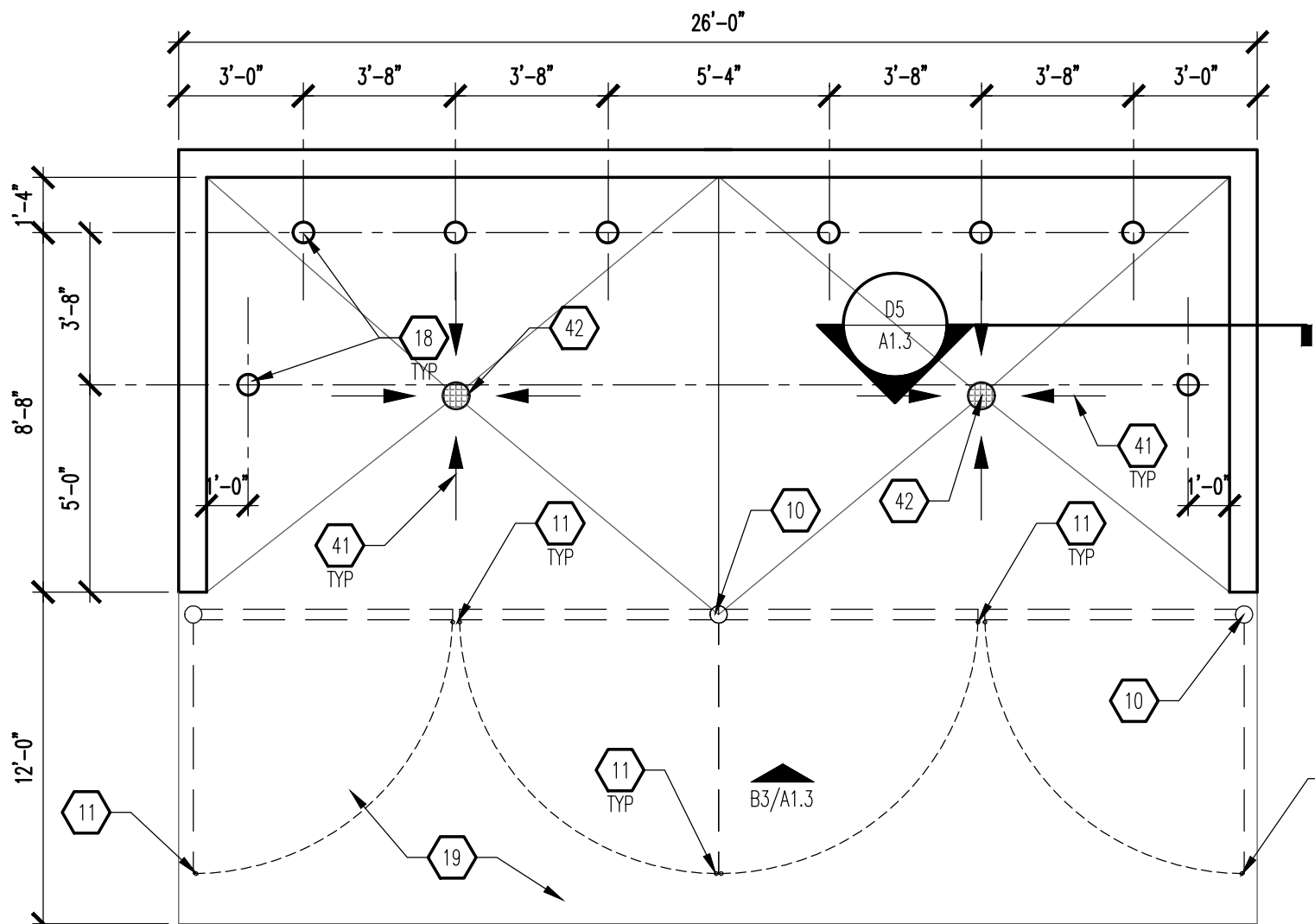
**D1 BOLLARD - SECTION**  
SCALE: 3/4" = 1'-0"



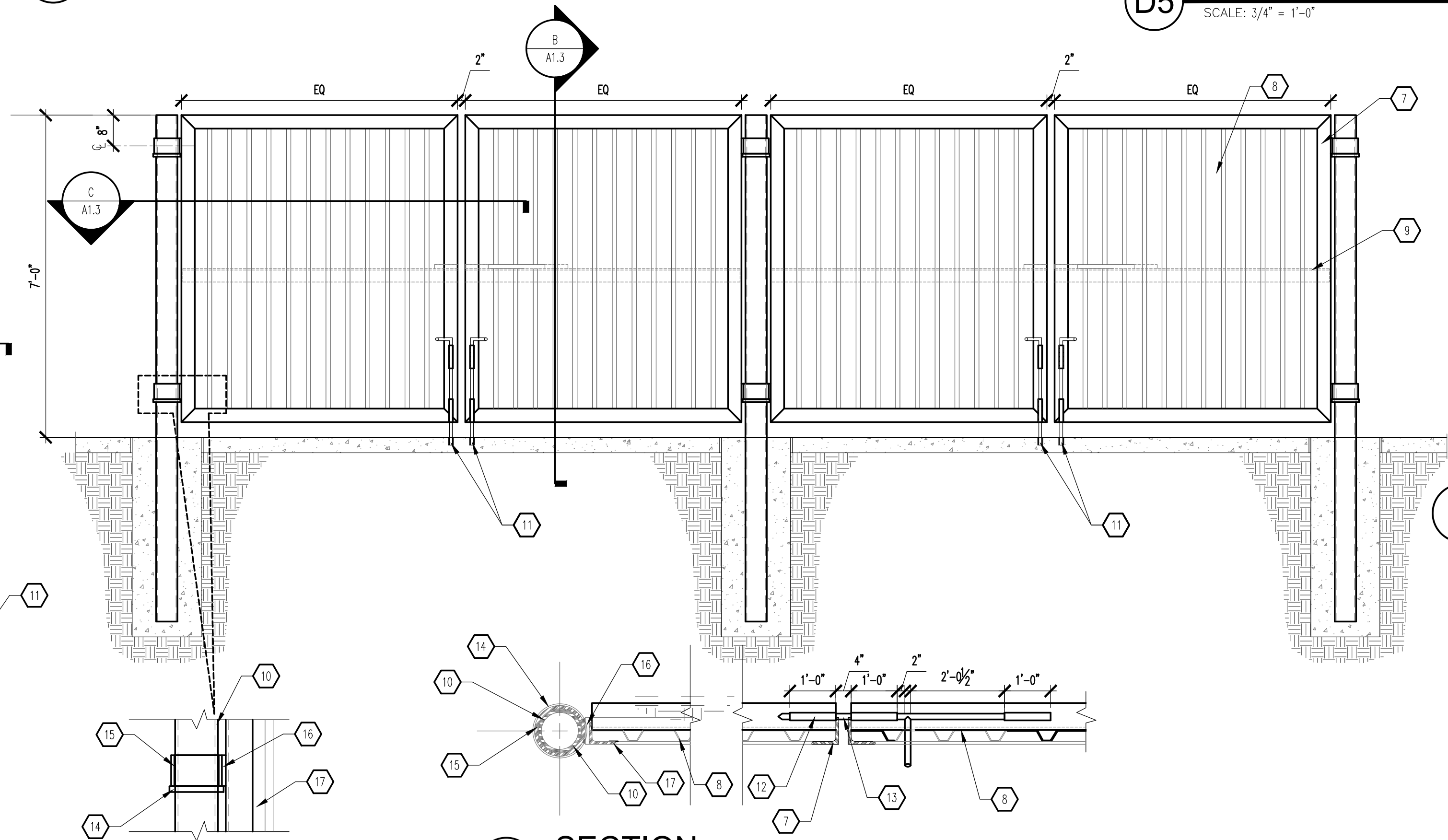
**D2 REFUSE ENCLOSURE - SECTION**  
SCALE: 1/2" = 1'-0"



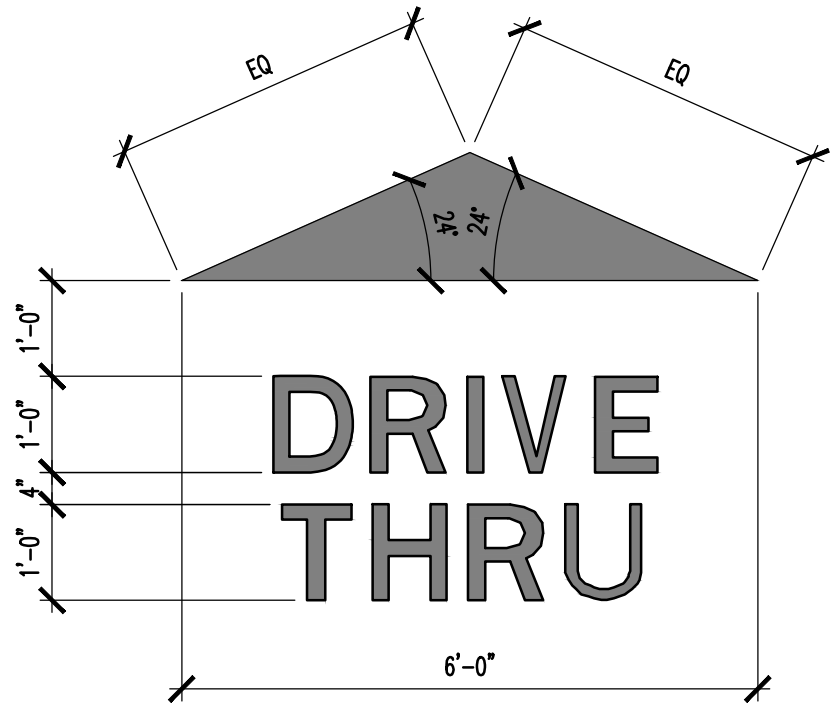
**D5 WALL - SECTION**  
SCALE: 3/4" = 1'-0"



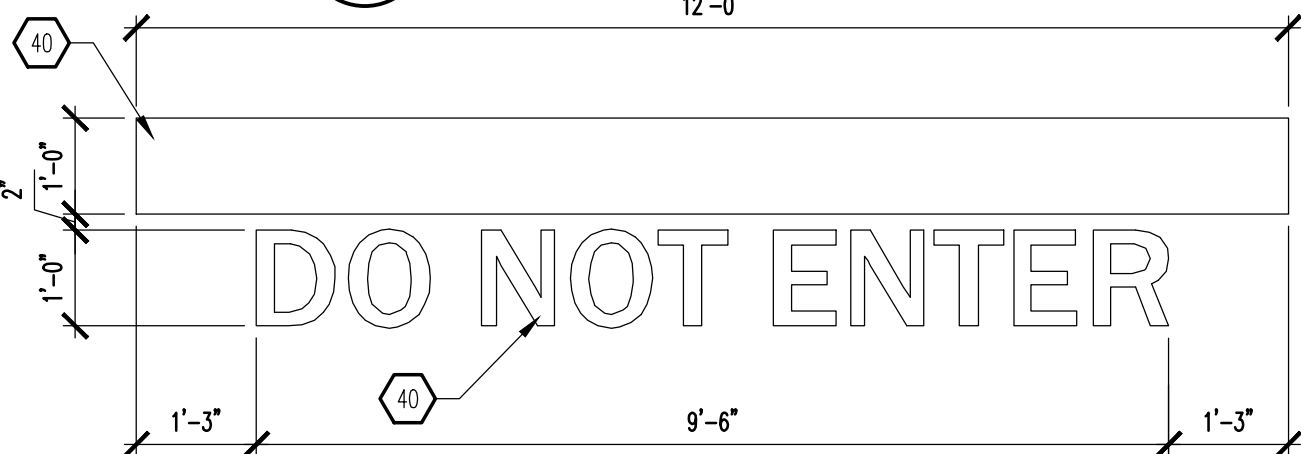
**B2 REFUSE ENCLOSURE PLAN**  
SCALE: 1/4" = 1'-0"



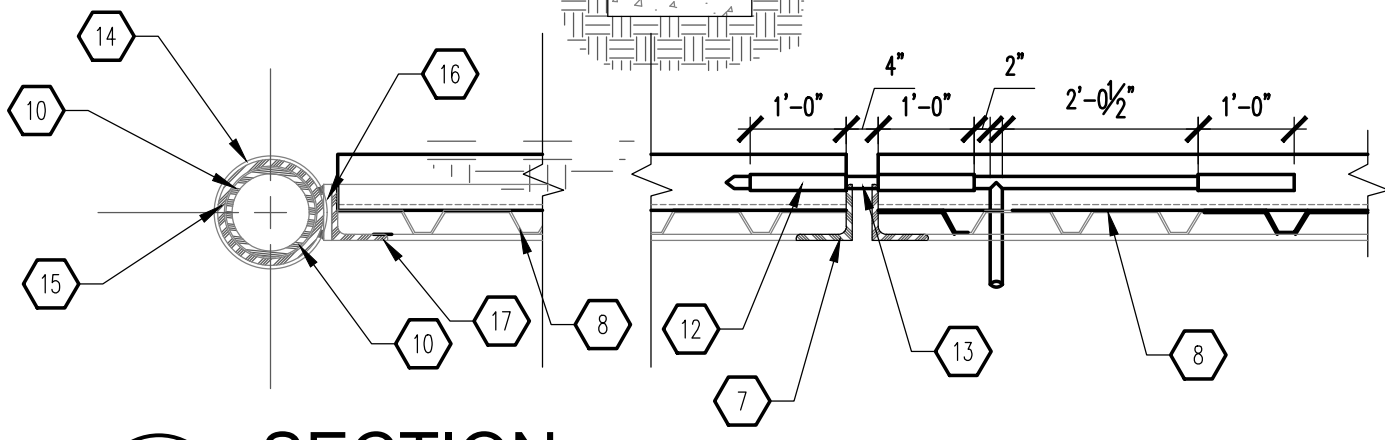
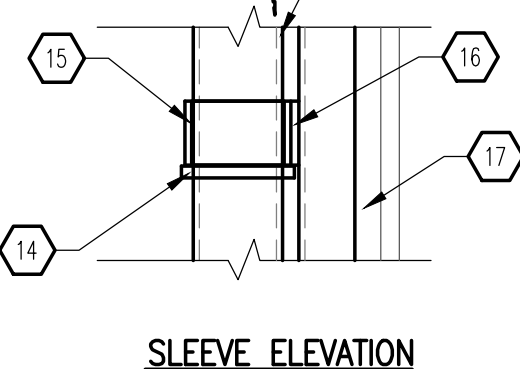
**B3 REFUSE ENCLOSURE ELEVATION**  
SCALE: 1/2" = 1'-0"



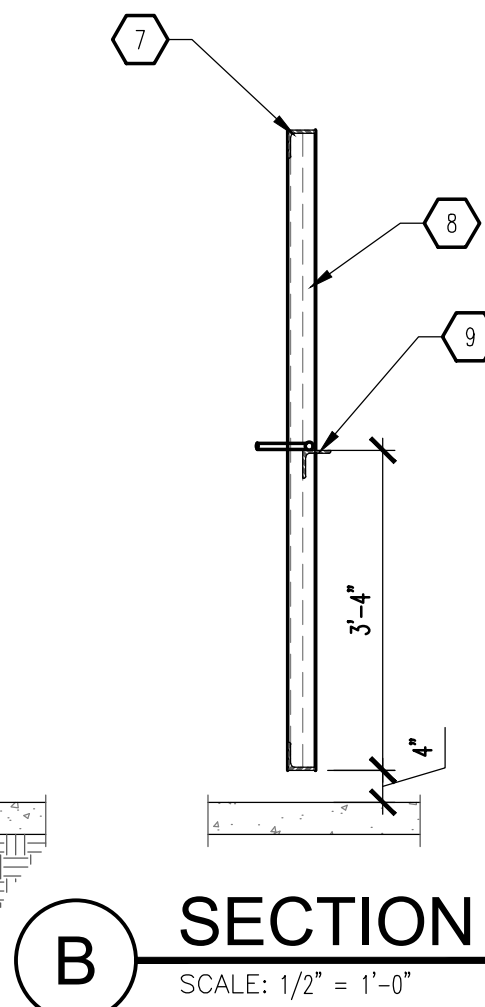
**B1 PAVEMENT MARKING**  
SCALE: 1/2" = 1'-0"



**A1 'DO NOT ENTER' PAVEMENT MARKING**  
SCALE: 1/2" = 1'-0"



**C SECTION**  
SCALE: 1/2" = 1'-0"



**B SECTION**  
SCALE: 1/2" = 1'-0"

GENERAL NOTES

- (2) #5 BARS @ TOP KNOCK-OUT BLOCK BOND BEAM, CONTINUOUS: #5 BRAS @ 32" OC VERTICAL GROUT REINFORCED CELLS, DURNALL @ 16" OC HORIZONTAL.
- 8" CMU WALL WITH 2-COAT SYNTHETIC STUCCO SYSTEM. COLOR TO MATCH BUILDING "STUCCO 1" COLOR; REFER TO EXTERIOR ELEVATIONS ON SHEET A201.
- SLOPE STUCCO CAP.
- 1/2" EXPANSION JOINT MATERIAL.
- 4" CONCRETE SLAB AT 4,000 PSI, 3/4" AGGREGATE WITH 6x6 - 10x10 WWM.
- (4) #4 BARS CONTINUOUS @ BOTTOM OF FOOTING #4 @ 16" OC ACROSS BOTTOM OF FOOTING.
- 3 1/2"x3 1/2"x6" STEEL ANGLE-WELD CORNERS (TYPICAL OF 4 SIDES).
- METAL DECKING, 18ga WITH SHEET METAL SCREWS @ 9" OC TOP, BOTTOM AND SIDES. PAINT FINISH, SHERWIN WILLIAMS #506143 BASKET EDGE.
- 3 1/2" x 3 1/2" x 3/8" STEEL ANGLE-WELD FLUSH WITH METAL DECKING AT EACH END.
- 5" OD HEAVY DUTY PIPE POST.
- 3/4" DIAMETER CANE BOLT. PROVIDE CATCH TO HOLD IN POSITION WHEN REQUIRED TO ELIMINATE DRAG.
- STEEL TUBING WELD TO ANGLE AT TOP TO FIT STEEL ROD.
- 3/4" DIAMETER STEEL ROD TAPER END AND WELD 6" HANDLE.
- 3/4" SQUARE STOCK WRAP AROUND POST AT EACH LOCATION.
- 6" HEAVY DUTY PIPE SLEEVE 4" IN WIDTH.
- 1/2" x 3 1/2" FLAT BAR STOCK OVER 6" SLEEVE.
- 3 1/2" x 3 1/2" x 3/8" ANGLE OVER 1/2" FLAT BAR.
- BOLLARD: SEE D1/A1.3.
- 6" CONCRETE APRON AT 4,000 PSI 3/4" AGGREGATE WITH 6x6 - 10x10 WWM WITH TURNDOWN EDGE.
- ASPHALT PAVING.
- STRUCTURAL FOOTING: SEE 7/S201.
- 3/4" THICK PLATE: SEE 7/S201.
- TUBE STEEL (TS): SEE 7/S201.
- METAL CHANNEL.
- 2 1/2" METAL STUD FRAMING, 18ga.
- 6" TAG SIDING: LONGBOARD PRODUCTS, 6" V-GROOVE TAG SIDING; DARK KNOTTY PINE; OR APPROVED EQUAL. CONTRACTOR TO MATCH APPROVED SOFFIT PANEL. SEE RCP ON SHEET A111.
- BOTTOM TRIM WITH WEEP HOLE BY SIDING MANUFACTURER.
- FINISHED GRADE.
- ROUND CONCRETE TOP.
- 6" STEEL PIPE FILLED WITH CONCRETE. PAINT FINISH - SAFETY YELLOW.
- BITUMINOUS JOINT FILLER (AT CONCRETE PAVEMENT ONLY).
- CONCRETE FOOTING.
- DASHED LINE INDICATES SHRUB: SEE LANDSCAPING PLAN ON SHEET LS101.
- ARTIFICIAL TURF: SMART TURF, CYPRESS POINT 70oz WITH MICROBAN TECHNOLOGY; OR APPROVED EQUAL.
- 3 LBS INFILL.
- 2" CUSHION PAD BY ARTIFICIAL TURF MANUFACTURER.
- 4" COMPACTED SUBGRADE.
- WEED BARRIER.
- COMPACTED SOIL UNDERNEATH.
- PAINT SOLID WHITE.
- PROVIDE 1/4" PER FOOT SLOPE TO FLOOR DRAIN.
- FLOOR DRAIN: SEE UTILITY PLAN ON SHEET C2.1.

KEYED NOTES

- (2) #5 BARS @ TOP KNOCK-OUT BLOCK BOND BEAM, CONTINUOUS: #5 BRAS @ 32" OC VERTICAL GROUT REINFORCED CELLS, DURNALL @ 16" OC HORIZONTAL.
- 8" CMU WALL WITH 2-COAT SYNTHETIC STUCCO SYSTEM. COLOR TO MATCH BUILDING "STUCCO 1" COLOR; REFER TO EXTERIOR ELEVATIONS ON SHEET A201.
- SLOPE STUCCO CAP.
- 1/2" EXPANSION JOINT MATERIAL.
- 4" CONCRETE SLAB AT 4,000 PSI, 3/4" AGGREGATE WITH 6x6 - 10x10 WWM.
- (4) #4 BARS CONTINUOUS @ BOTTOM OF FOOTING #4 @ 16" OC ACROSS BOTTOM OF FOOTING.
- 3 1/2"x3 1/2"x6" STEEL ANGLE-WELD CORNERS (TYPICAL OF 4 SIDES).
- METAL DECKING, 18ga WITH SHEET METAL SCREWS @ 9" OC TOP, BOTTOM AND SIDES. PAINT FINISH, SHERWIN WILLIAMS #506143 BASKET EDGE.
- 3 1/2" x 3 1/2" x 3/8" STEEL ANGLE-WELD FLUSH WITH METAL DECKING AT EACH END.
- 5" OD HEAVY DUTY PIPE POST.
- 3/4" DIAMETER CANE BOLT. PROVIDE CATCH TO HOLD IN POSITION WHEN REQUIRED TO ELIMINATE DRAG.
- STEEL TUBING WELD TO ANGLE AT TOP TO FIT STEEL ROD.
- 3/4" DIAMETER STEEL ROD TAPER END AND WELD 6" HANDLE.
- 3/4" SQUARE STOCK WRAP AROUND POST AT EACH LOCATION.
- 6" HEAVY DUTY PIPE SLEEVE 4" IN WIDTH.
- 1/2" x 3 1/2" FLAT BAR STOCK OVER 6" SLEEVE.
- 3 1/2" x 3 1/2" x 3/8" ANGLE OVER 1/2" FLAT BAR.
- BOLLARD: SEE D1/A1.3.
- 6" CONCRETE APRON AT 4,000 PSI 3/4" AGGREGATE WITH 6x6 - 10x10 WWM WITH TURNDOWN EDGE.
- ASPHALT PAVING.
- STRUCTURAL FOOTING: SEE 7/S201.
- 3/4" THICK PLATE: SEE 7/S201.
- TUBE STEEL (TS): SEE 7/S201.
- METAL CHANNEL.
- 2 1/2" METAL STUD FRAMING, 18ga.
- 6" TAG SIDING: LONGBOARD PRODUCTS, 6" V-GROOVE TAG SIDING; DARK KNOTTY PINE; OR APPROVED EQUAL. CONTRACTOR TO MATCH APPROVED SOFFIT PANEL. SEE RCP ON SHEET A111.
- BOTTOM TRIM WITH WEEP HOLE BY SIDING MANUFACTURER.
- FINISHED GRADE.
- ROUND CONCRETE TOP.
- 6" STEEL PIPE FILLED WITH CONCRETE. PAINT FINISH - SAFETY YELLOW.
- BITUMINOUS JOINT FILLER (AT CONCRETE PAVEMENT ONLY).
- CONCRETE FOOTING.
- DASHED LINE INDICATES SHRUB: SEE LANDSCAPING PLAN ON SHEET LS101.
- ARTIFICIAL TURF: SMART TURF, CYPRESS POINT 70oz WITH MICROBAN TECHNOLOGY; OR APPROVED EQUAL.
- 3 LBS INFILL.
- 2" CUSHION PAD BY ARTIFICIAL TURF MANUFACTURER.
- 4" COMPACTED SUBGRADE.
- WEED BARRIER.
- COMPACTED SOIL UNDERNEATH.
- PAINT SOLID WHITE.
- PROVIDE 1/4" PER FOOT SLOPE TO FLOOR DRAIN.
- FLOOR DRAIN: SEE UTILITY PLAN ON SHEET C2.1.

| REV | DATE | BY | REVISION |
|-----|------|----|----------|
| 1   |      |    |          |
| 2   |      |    |          |
| 3   |      |    |          |
| 4   |      |    |          |
| 5   |      |    |          |

**MODULUS ARCHITECTS**  
100 SUN AVENUE N.E., Ste 305  
ALBUQUERQUE, NEW MEXICO 87109  
PHONE (505) 338-1499 FAX (505) 338-1498



| PROJECT TITLE  | DATE         | SHEET     |
|--|--------------|-----------|
| STARBUCKS<br>ALAMEDA & WASHINGTON<br>ALBUQUERQUE, NEW MEXICO 87XXX | 30.07.2020   | A1.3      |
| PROJECT MANAGER  | JOB NO.      | DRAWN BY: |
| DEVIN NGUYEN   | ABO          | DIN       |
| SHEET TITLE  | SITE DETAILS |           |