

# CITY OF ALBUQUERQUE

Planning Department  
Alan Varela, Director



Mayor Timothy M. Keller

August 06, 2024

Andrea Rand,  
ISG Inc  
7100 International Dr, Ste 5550,  
Minneapolis, MN 55425

**Re: U-Haul  
8200 Jefferson St NE  
Traffic Circulation Layout-DFT  
Engineer's/Architect's Stamp 08-05-24 (C17D146)**

Dear Ms. Rand,

The conceptual TCL submittal received 08/02/2024 is approved for DHO and/or DFT submittal. When submitting this project through the building permit process, a full Traffic Circulation Layout will need to be submitted and approved prior to building permit. **When submitting a TCL for Building Permit Approval, also provide the signed traffic scoping form.**

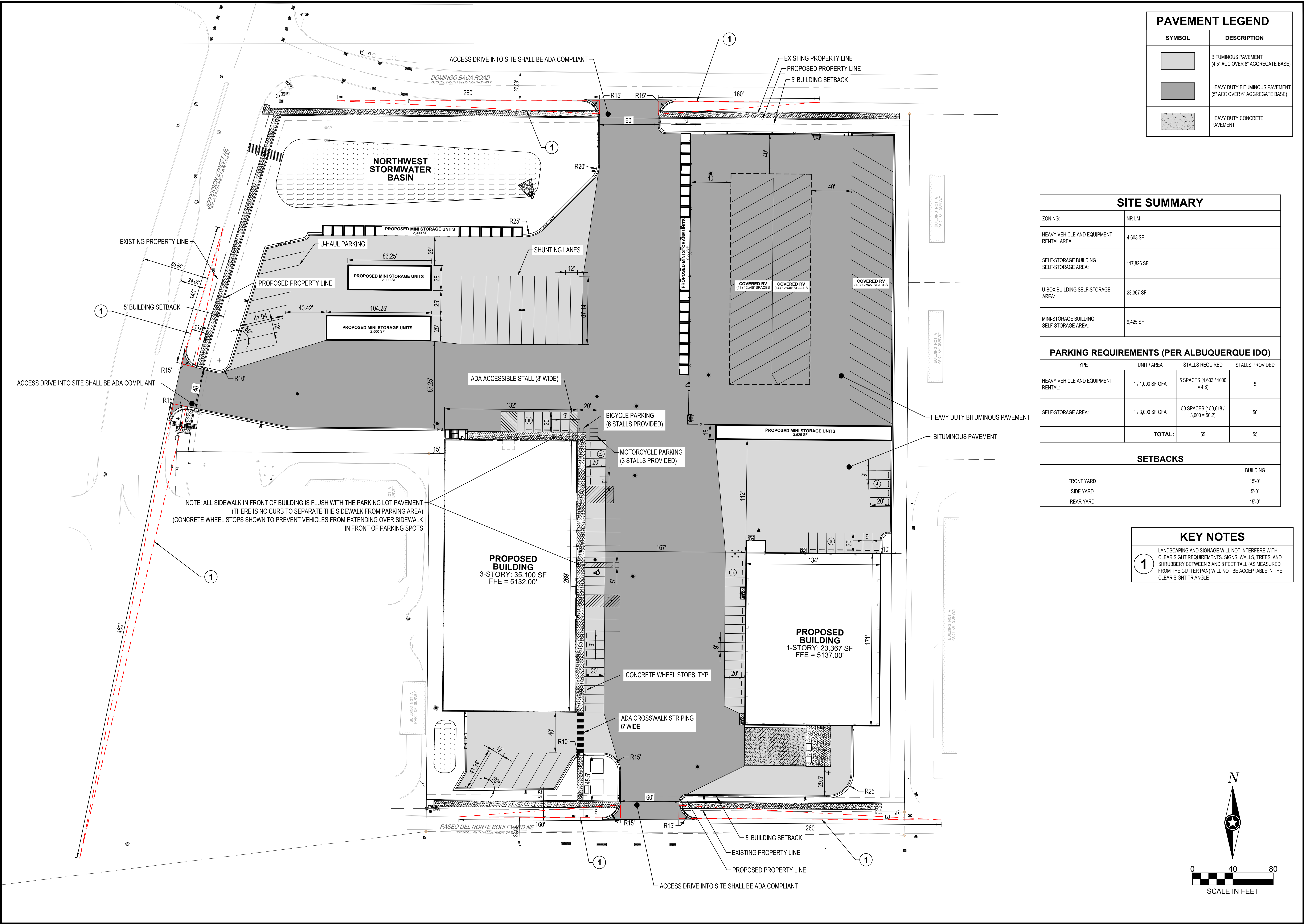
When the site construction is completed and an inspection for Certificate of Occupancy (C.O.) is requested, use the original City stamped approved TCL for certification. Redline any minor changes and adjustments that were made in the field. A NM registered architect or engineer must stamp, sign, and date the certification TCL along with indicating that the development was built in "substantial compliance" with the TCL. Submit this certification, the TCL, and a completed Drainage and Transportation Information Sheet to [plndrs@cabq.gov](mailto:plndrs@cabq.gov) for log in and evaluation by Transportation.

Once verification of certification is completed and approved, notification will be made to Building Safety to issue Final C.O. To confirm that a final C.O. has been issued, call Building Safety at 924-3690.

Sincerely,

Ernest Armijo, P.E.  
Principal Engineer, Planning Dept.  
Development Review Services





PAVEMENT LEGEND	
SYMBOL	DESCRIPTION
	BITUMINOUS PAVEMENT (4.5" ACC OVER 6" AGGREGATE BASE)
	HEAVY DUTY BITUMINOUS PAVEMENT (5" ACC OVER 6" AGGREGATE BASE)
	HEAVY DUTY CONCRETE PAVEMENT

SITE SUMMARY	
ZONING:	NR-LM
HEAVY VEHICLE AND EQUIPMENT RENTAL AREA:	4,603 SF
SELF-STORAGE BUILDING SELF-STORAGE AREA:	117,826 SF
U-BOX BUILDING SELF-STORAGE AREA:	23,367 SF
MINI-STORAGE BUILDING SELF-STORAGE AREA:	9,425 SF

PARKING REQUIREMENTS (PER ALBUQUERQUE IDO)			
TYPE	UNIT / AREA	STALLS REQUIRED	STALLS PROVIDED
HEAVY VEHICLE AND EQUIPMENT RENTAL:	1 / 1,000 SF GFA	5 SPACES (4,603 / 1000 = 4.6)	5
SELF-STORAGE AREA:	1 / 3,000 SF GFA	50 SPACES (150,618 / 3,000 = 50.2)	50
TOTAL:		55	55

SETBACKS	
	BUILDING
FRONT YARD	15'-0"
SIDE YARD	5'-0"
REAR YARD	15'-0"

1

KEY NOTES

LANDSCAPING AND SIGNAGE WILL NOT INTERFERE WITH CLEAR SIGHT REQUIREMENTS. SIGNS, WALLS, TREES, AND SHRUBBERY BETWEEN 3 AND 8 FEET TALL (AS MEASURED FROM THE GUTTER PAN) WILL NOT BE ACCEPTABLE IN THE CLEAR SIGHT TRIANGLE

SHEET NOTES:

REVISIONS:

NO.	DATE	INITIALS	NOTES
1			
2			
3			
4			
5			
6			
7			
8			

PROFESSIONAL SEAL:

ANDREW THOMAS BRANDEL

NEW MEXICO

27404

Professional Engineer

8/5/2024

ISG

THIS DOCUMENT IS THE PROPERTY OF I & S GROUP, INC. AND MAY NOT BE USED, COPIED OR DUPLICATED WITHOUT PRIOR WRITTEN CONSENT.

SHEET NOT VALID UNLESS THIS TEXT IS COLOR.

PROJECT

U-HAUL

ALBUQUERQUENEW MEXICO

SITE ADDRESS:

U-Haul Moving & Storage

8200 JEFFERSON ST

SHEET CONTENTS:

SITE PLAN

824071

DRAWN:GBV

CHECKED:ARA

DATE:--/--

C3-10

SITE