

CITY OF ALBUQUERQUE

Planning Department
Brennon Williams, Director



Mayor Timothy M. Keller

August 21, 2020

Century Bank
498 N Guadalupe St
Santa Fe NM 87501

Site: 6301 Holly Ave. NE
Tract C (0.8275 ac)

Paseo Nuevo Ltd. CO. -
Skip Skarsgard, Member
skip@ziarisingnm.com

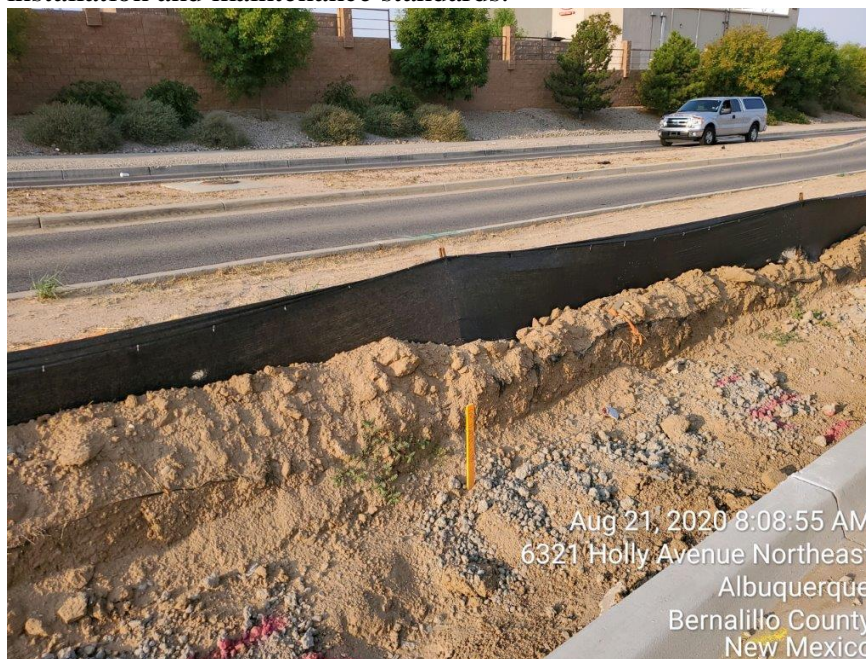
Site: 6321 Holly Ave. NE
Tract A (0.6462 ac)

Site: "Paseo Nuevo Parking Lot" – C18E074A

Re: Drainage Ordinance (14-5-2-1) Violations for Erosion and Sediment Control

The following violations were observed at today's inspection.

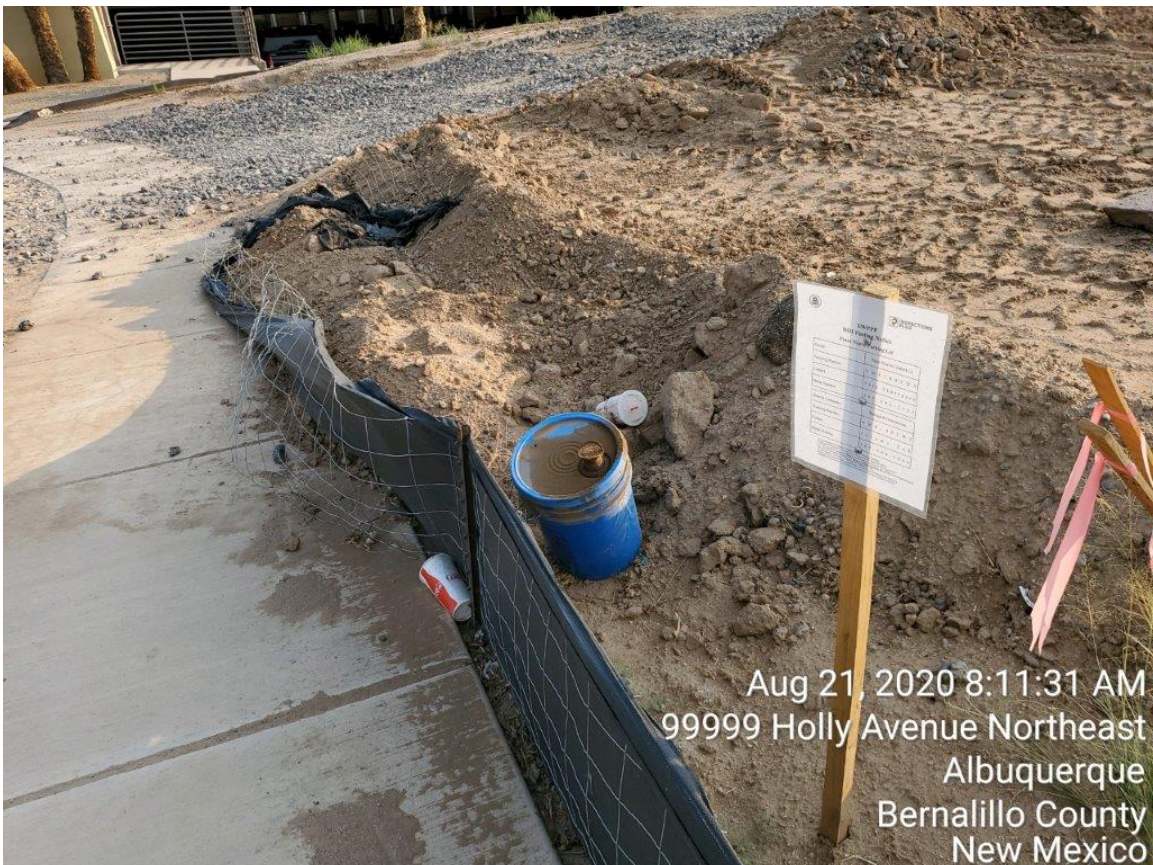
1. Silt fence has holes in it and too much dirt piled against it. It is not adequately embedded. See the 2018 Construction Site manual at <http://documents.cabq.gov/planning/DevelopmentReviewServices/Construction%20Site%20Inspection%20Standards%2012-3-18.pdf> for proper silt fence installation and maintenance standards.



Aug 21, 2020 8:08:55 AM
6321 Holly Avenue Northeast
Albuquerque
Bernalillo County
New Mexico



2. Construction and domestic waste not in approved containers.



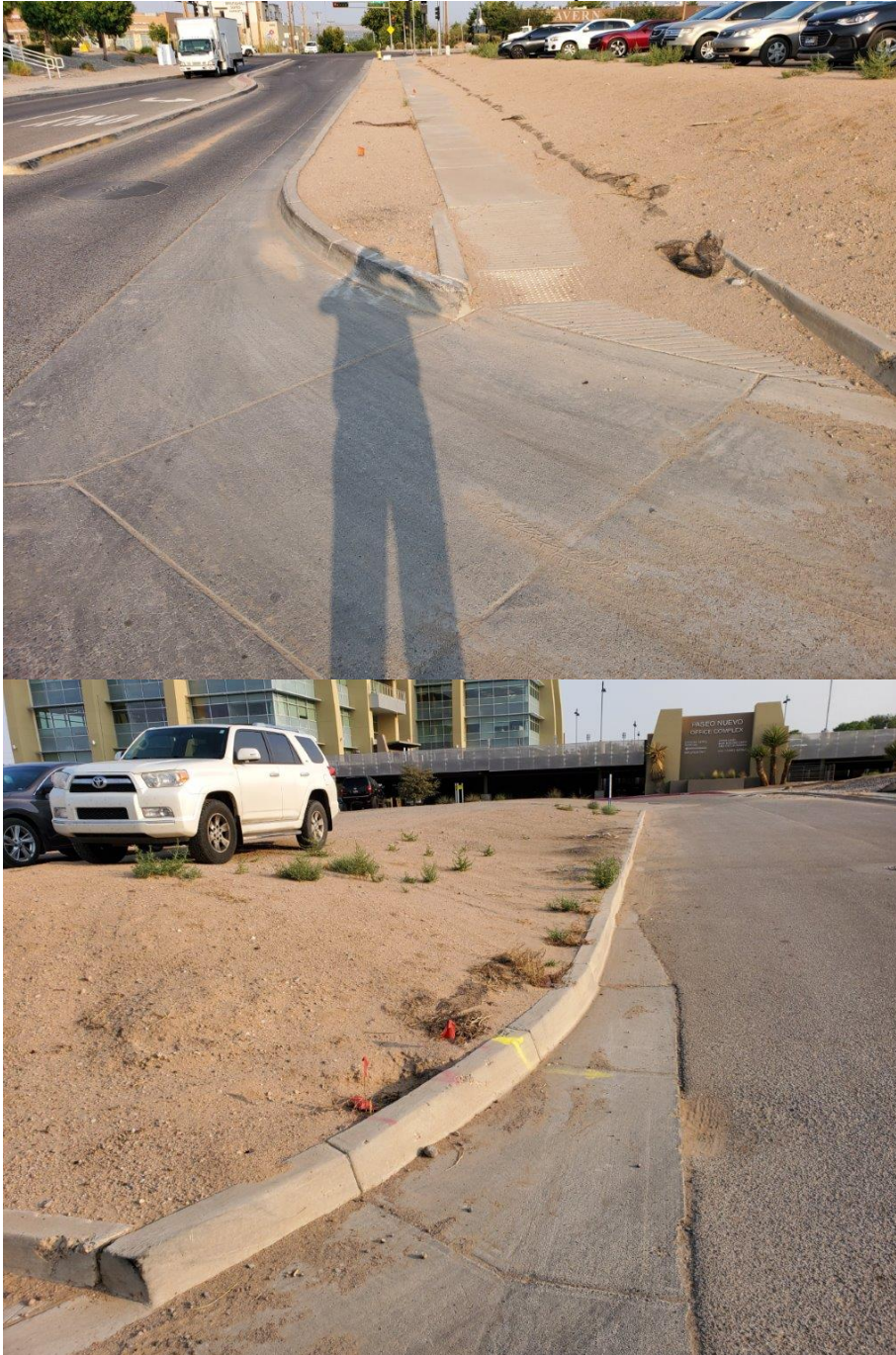
CITY OF ALBUQUERQUE

Planning Department
Brennon Williams, Director



Mayor Timothy M. Keller

3. Sediment in driveway and in Holly street and sidewalk.





Required Mitigation:

1. Maintain stormwater controls including silt fence.
2. Dispose of construction and domestic waste in acceptable containers daily and use lids or tarps to cover waste containers when not in use per CGP 2.2.3.e
3. Where sediment has been tracked-out from your site onto paved roads and sidewalks remove the deposited sediment by the end of the same business day in which the track-out occurs per CGP 2.2.4.d.

If the violations are not mitigated within 7 days, the property owner is subject to a fine of \$500/day per the City's Drainage Control Ordinance and the non-compliance will be reported to the EPA.

If you have any questions, you can contact me at 924-3420, jhughes@cabq.gov .

Sincerely,

James D. Hughes

James D. Hughes, P.E.
Principal Engineer, Hydrology/Stormwater Quality
Planning Dept.