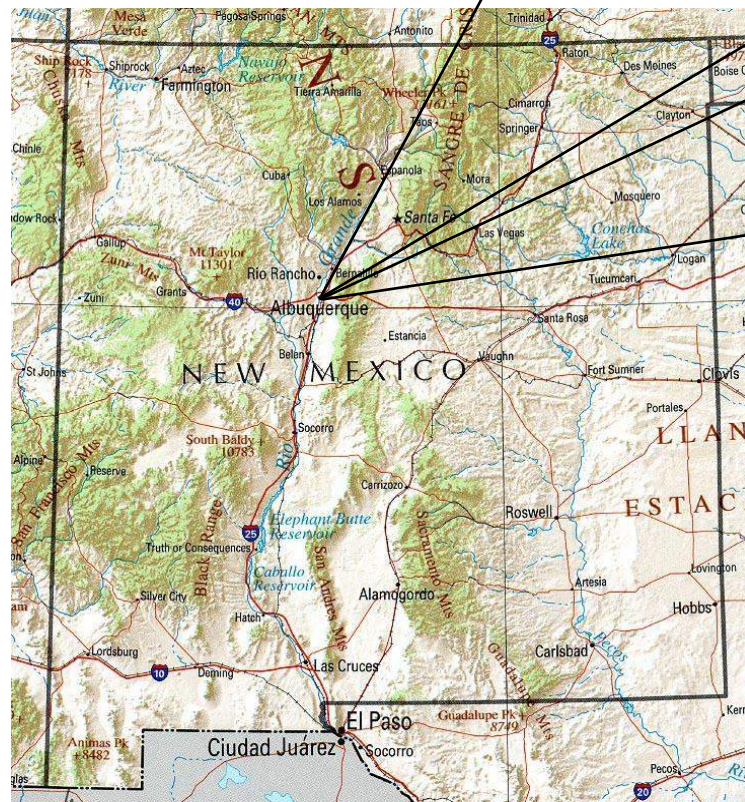


ALBUQUERQUE, BERNALILLO COUNTY, NM

1 COVER SHEET
2 GENERAL NOTES
3 BEST MANAGEMENT PRACTICES
4 BEST MANAGEMENT PRACTICES
5 BEST MANAGEMENT PRACTICES
6 BEST MANAGEMENT PRACTICES
7 TEMPORARY SEDIMENT & EROSION CONTROL PLAN (TESCP)
8 FINAL STABILIZATION PLAN



- SWPPP
- Stormwater
- Erosion Control
- Reclamation
- Seeding

www.e2rc.com | 505.867.4040



#	REVISION ITEM	DATE

SEVANO DEVELOPMENT, LLC
SEVANO PLACE SUBDIVISION
ALBUQUERQUE, NM

DESIGNED BY:
K. FETTER, P.E.
DRAWN BY:
S. FETTER

SHEET:

COVER

GENERAL NOTES

THE NPDES COMPLIANCE SWPPP DRAIING AND ASSOCITAED DOCUMENTATION IS AND SHALL BE CONSIDERED A LIVING DOCUMENT ALLOWING FOR MODIFICATIONS AS SITE CONDITIONS CHANGE OR DICTATE.

ALL SITE FEATURES (EXISTING/PROPOSED GRADES, EXISTING CONSTRUCTION, FUTURE CONSTRUCTION, ETC.) SHOWN IS PER INFORMATION FROM OTHERS.

MINIMUM REQUIREMENTS TO FURTHER DEVELOP OR MODIFY THIS STORMWATER POLLUTION PREVENTION PLAN (SWPPP) DRAWING SHALL BE BASED ON THE CURRENT EDITION OF THE NEW MEXICO STATE HIGHWAY AND TRANSPORTATION DEPARTMENT (NMSHTD), NPDES LAW AND CITY OF ALBUQUERQUE ORDINANCE § 14-5-2-11.

ALL OPERATORS SHALL SUBMIT A NOTICE OF INTENT (NOI). THE NOI SHALL BE ACTIVE AND POSTED ON THE EPA'S WEBSITE PRIOR TO COMMENCING EARTH DISTURBING ACTIVITIES.

LOCATE TEMPORARY WASHOUT, ANCHORED TOILETS, CONSTRUCTION ENTRANCE AND PARKING, STAGING, REFUELING, TRASH CONTAINMENT AREA TO MINIMIZE SITE DISTURBANCE DURING CONSTRUCTION ACTIVITY.

THE OPERATOR IS REQUIRED TO REGULARLY PERFORM STREET SWEEPING AND CLEAN - UP MEASURES IN THE EVENT OF SEDIMENT TRACK - OUT.

ALL EROSION AND SEDIMENT CONTROL (ESC) WORK ON THESE PLANS, EXCEPT AS OTHERWISE STATED OR PROVIDED HEREON SHALL BE PERMITTED, CONSTRUCTED, INSPECTED, AND MAINTAINED IN ACCORDANCE WITH:

THE CITY ORDINANCE § 14-5-2-11, THE ESC ORDINANCE;
THE EPA'S 2017 CONSTRUCTION GENERAL PERMIT (CGP);

ALL TEMPORARY SEDIMENT AND EROSION CONTROL MEASURES MUST BE INSTALLED PRIOR TO BEGINNING ANY EARTH MOVING ACTIVITIES EXCEPT AS SPECIFIED HEREON IN THE PHASING PLAN. CONSTRUCTION OF EARTHEN BMPS SUCH AS SEDIMENT TRAPS, SEDIMENT BASINS, AND DIVERSION BERMS SHALL BE COMPLETED AND INSPECTED PRIOR TO ANY OTHER CONSTRUCTION OR EARTHWORK. SELF-INSPECTION IS REQUIRED AFTER INSTALLATION OF THE BMPS AND PRIOR TO BEGINNING CONSTRUCTION.

AT A MINIMUM A ROUTINE COMPLIANCE SELF-INSPECTION IS REQUIRED TO REVIEW THE PROJECT FOR COMPLIANCE WITH THE CONSTRUCTION GENERAL PERMIT ONCE EVERY 14 DAYS AND AFTER ANY PRECIPITATION EVEN OF 1/4 INCH OR GREATER UNTIL THE SITE CONSTRUCTION HAS BEEN COMPLETED AND THE SITE DETERMINED AS STABILIZED BY THE CITY OF ALBUQUERQUE. REPORTS OF THESE INSPECTIONS SHALL BE KEPT BY THE PERSON OR ENTITY AUTHORIZED TO DIRECT THE CONSTRUCTION ACTIVITIES ON THE SITE. INSPECTION REPORTS SHALL BE KEPT ELECTRONICALLY OR HARD COPY.

BMPS SHALL BE INSPECTED AND MAINTAINED UNTIL ALL DISTURBED AREAS ARE STABILIZED. UNLESS OTHERWISE SPECIFIED, NATIVE GRASS SEEDING AND MULCH PER COA STD 1012 IS REQUIRED FOR FINAL STABILIZATION PRIOR TO REMOVAL OF BMPS AND DISCONTINUATION OF INSPECTIONS.

PROJECT DETAILS

NPDES ID: NMR10039R AND NMR10039X

ADDRESS: SEVANO LOOP, ALBUQUERQUE, NM 87113

GPS COORDINATE: 35.183661, -106.569944

DISTURBED ACREAGE: 6.5

RECEIVING WATERS: UNNAMED CANAL, ARROYO DE DOMINGO BACA

IMPAIRED/TIERED WATERS: N/A

ENDANGERED SPECIES: CRITERION C

HISTORIC PRESERVATION: HISTORIC PROPERTIES ARE NOT PRESENT.

FINAL STABLIZATION TYPE: ASPHALT PAVING, SIDEWALKS, CURBS, GUTTERS AND VERTICAL STRUCTURES.

REGULATING AUTHORITY: ENVIRONMENTAL PROTECTION AGENCY (EPA)

REGULATING PERMIT: 2017 CONSTRUCTION GENERAL PERMIT

PROJECT OWNER:
CLEARBROOK INVESTMENTS, INC.
8801 JEFFERSON NE, BLDG A
ALBUQUERQUE, NM 87113

OWNER CONTACT:
CHRIS KELSEY
(505) 858-1800
CKELSEY@STILLBROOKE.COM

GENERAL CONTRACTOR (GC):
SEVANO DEVELOPMENT, LLC
8504 WATERFORD PL NE
ALBUQUERQUE, NM 87122

GC CONTACT:
SHAKEEL RIZVI
(505) 315-6563
SHAKY1424@YAHOO.COM



www.e2rc.com | 505.867.4040

- SWPPP
- Stormwater
- Erosion Control
- Reclamation
- Seeding

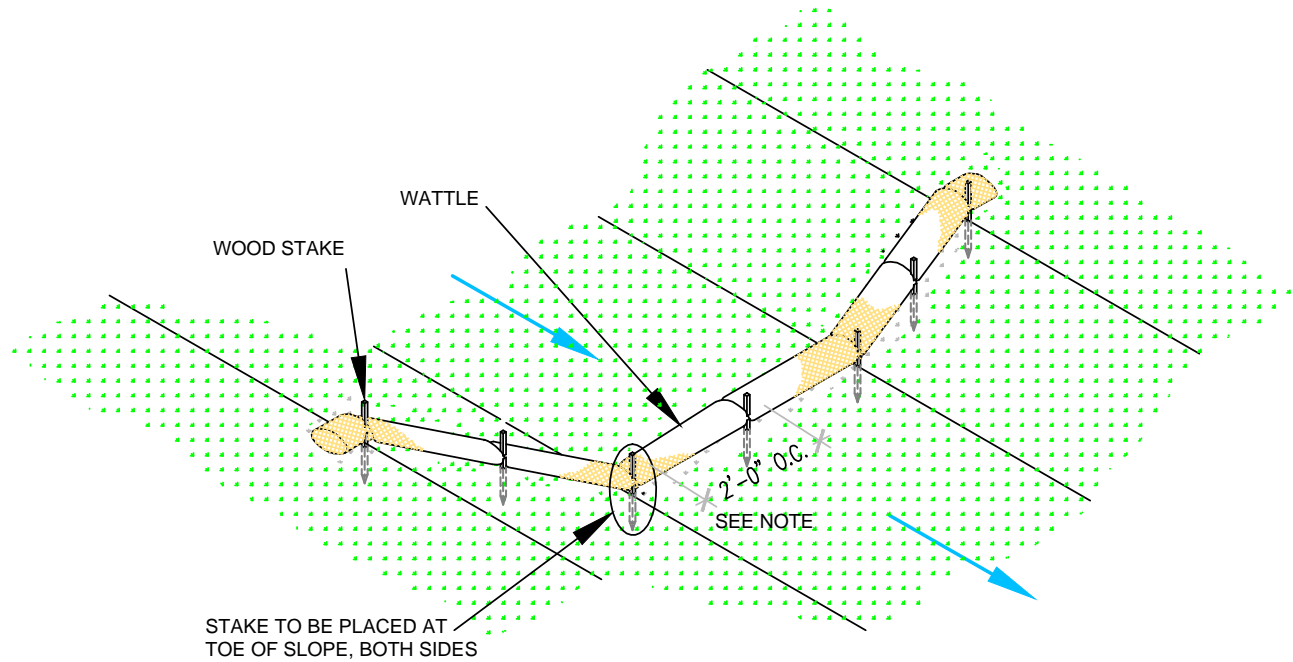


					DATE
					REVISION ITEM
					#

SEVANO DEVELOPMENT, LLC
SEVANO PLACE SUBDIVISION
SWPPP NOTES

DESIGNED BY:
K. FETTER, P.E.
DRAWN BY:
S. FETTER

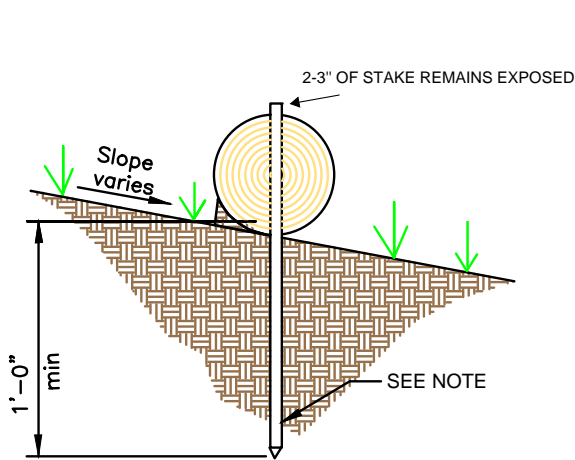
SHEET:
GENERAL
NOTES



**WATTLE
WITHOUT BLANKET**

NTS

2' FOR DRAWING ONLY. 8' MAX
SPACING BETWEEN STAKES



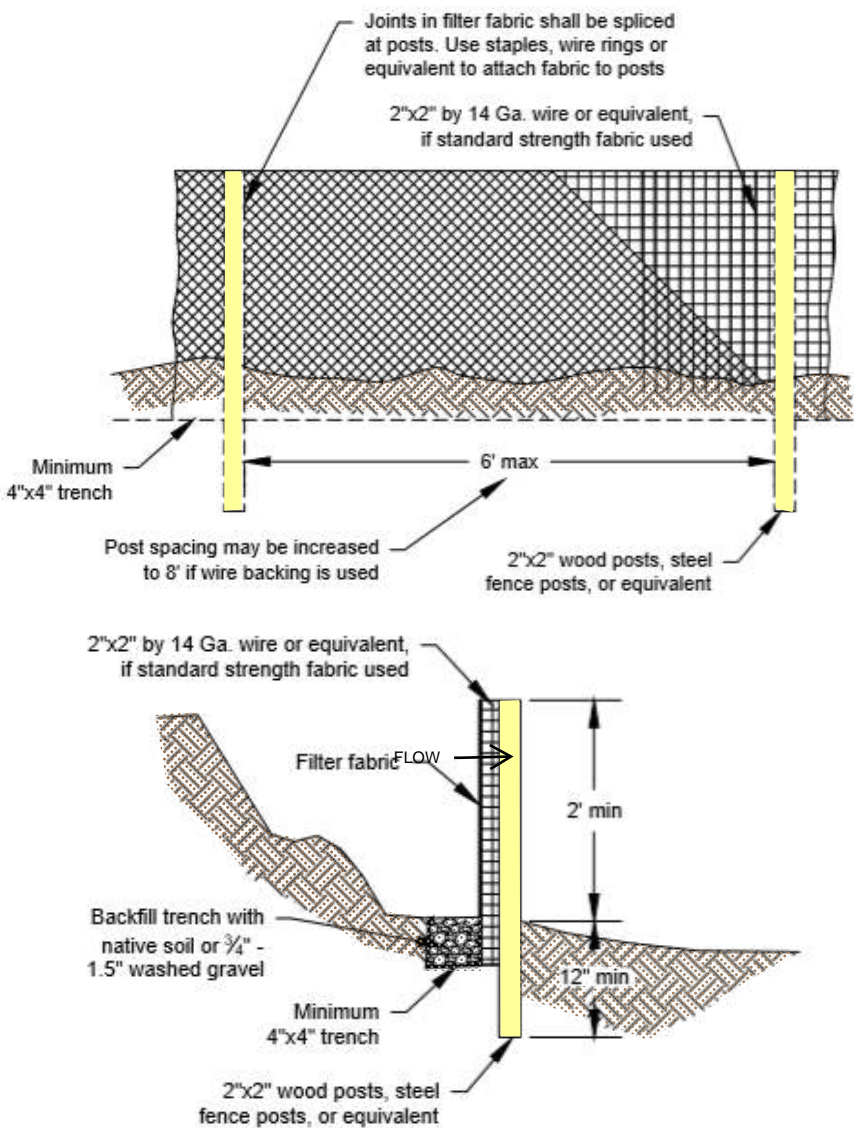
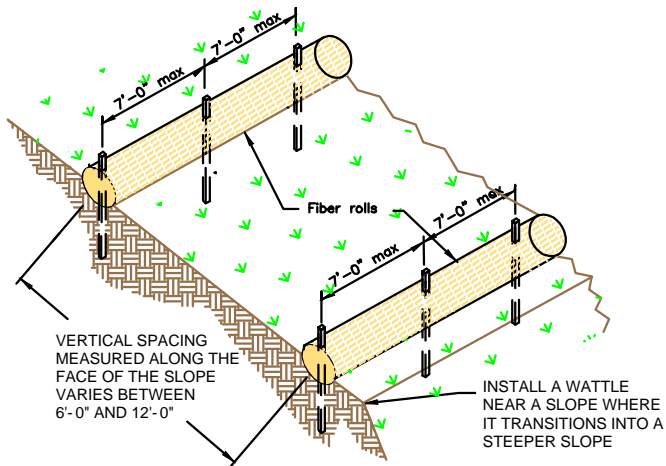
WATTLE

NTS

SECURE WATTLE WITH 18-24" STAKES EVERY 3-4' AND STAKES ON EACH END OF THE WATTLE.

DRIVE STAKES PERPENDICULAR TO THE SLOPE FACE AND THROUGH THE MIDDLE OF THE WATTLE LEAVING AT
LEAST 2-3" OF THE STAKE ABOVE THE WATTLE.

VERTICAL SPACING DEPENDENT ON SLOPE GRADIENT.



SILT FENCE

NTS

SILT FENCE IS TO BE PLACED PERPENDICULAR TO THE SLOPE OF THE SITE.

DIG A 4"x4" MINIMUM TRENCH UPSTREAM OF THE SILT FENCE. DRIVE STAKES AT LEAST 1' DEEP ON THE DOWNSTREAM EDGE.

RUN THE SILT FENCE ON THE INSIDE OF THE STAKES AND SECURE WITH HOG RINGS, WIRE, ZIP TIES OR STAPLES.

IF ONE CONTINUOUS PIECE OF FABRIC IS NOT AVAILABLE, OVERLAP THE FABRIC AT LEAST THE WIDTH OF THE STAKE AND SECURE WITH HOG RINGS, WIRE, ZIP TIES OR STAPLES.

COVER TRENCH WITH BACKFILLED COMPACTED SOIL, GRAVEL OR ROCK.



SWPPP
Stormwater
Erosion Control
Reclamation
Seeding

www.e2rc.com | 505.867.4040



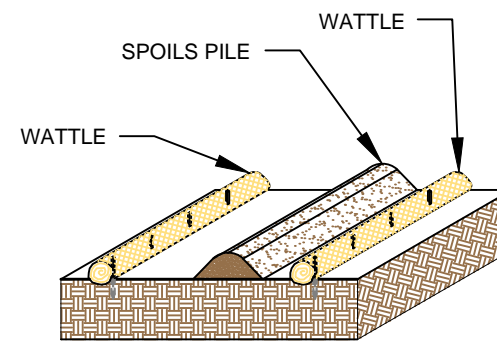
				DATE
				REVISION ITEM
				#

SEVANO DEVELOPMENT, LLC
SEVANO PLACE SUBDIVISION
BMP DETAILS

DESIGNED BY:
K. FETTER, P.E.
DRAWN BY:
S. FETTER

SHEET:

3



SPOILS PILE PROTECTION

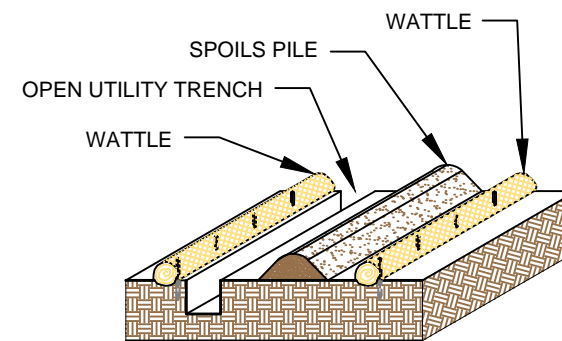
NTS

PLACE WATTLES IN FUTURE LOCATIONS OF SPOILS STOCKPILES PRIOR TO CONSTRUCTION.

PLACE WATTLES CONTINUOUSLY ALONG THE EXTENT OF THE SPOILS STOCKPILE.

ANCHOR THE WATTLES USING A MINIMUM OF 1" X 2" X 18" WOODEN STAKES OR SAND BAGS.

ONCE/IF THE SPOILS STOCKPILE IS DEPLETED OR MOVED,
REMOVE THE WATTLES AND REUSE THEM IN THE NEXT
LOCATION.



OPEN TRENCH SPOILS PILE PROTECTION

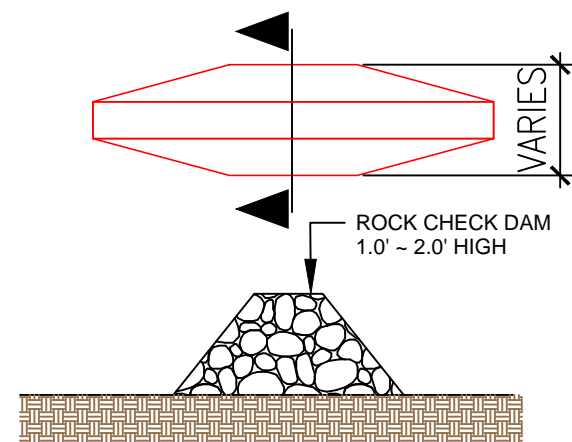
NTS

PLACE WATTLES CONTINUOUSLY ALONG THE EXTENT OF THE UTILITY TRENCH AND FUTURE LOCATION OF THE SPOILS STOCKPILE PRIOR TO EXCAVATION OF THE UTILITY.

WATTLES ARE TO REMAIN ANCHORED IN PLACE UNTIL THE UTILITY TRENCH IS BACKFILLED.

ANCHOR THE WATTLES USING A MINIMUM 1"X2"X18"
WOODEN STAKE OR SANDBAGS.

ONCE THE TRANCH IS BACKFILLED, WATTLES MAY BE REMOVED AND REUSED IN THE NEXT SECTION OF EXCAVATION PROVIDED THEY ARE IN GOOD CONDITION.



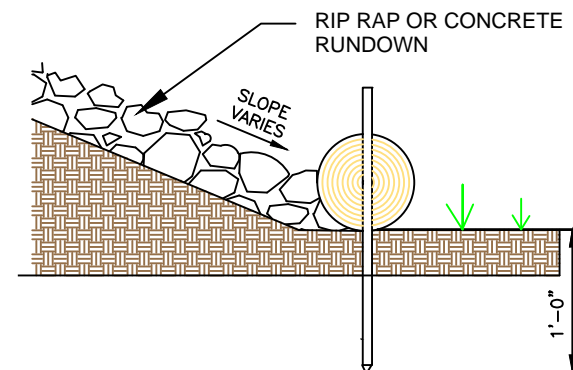
ROCK CHECK DAM

NTS

PLACE CHECK DAMS AT REGULARLY SPACED INTERVALS
ALONG SWALE OR DRAINAGE DITCH.

HEIGHTS SHOULD ALLOW FOR POOLS TO DEVELOP
UPSTREAM OF EACH CHECK DAM.

IF MULTIPLE DAMS ARE USED, THE TOP OF THE LOWER DAM SHOULD BE THE SAME HEIGHT AS THE ELEVATION AS THE TOE OF THE UPPER DAM.



RUNDOWN DETAIL

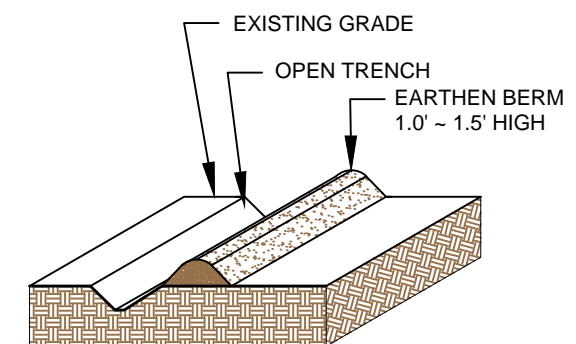
NTS

8' MAX SPACING BETWEEN STAKES

PLACE WATTLES AT THE TOE OF SLOPE. THE RIP RAP OR CONCRETE RUNDOWN SHOULD ABUT THE WATTLE.

ANCHOR THE WATTLES WITH WOODEN STAKES. DRIVE THE STAKE A MINIMUM OF 12" INTO THE MIDDLE OF THE WATTLE AND SOIL UNDERNEATH.

2-3" OF THE WOODEN STAKE SHOULD BE PRESENT ABOVE THE WATTLE.



EARTHEN BERM

NTS

CONSTRUCT AN EARTHEN BERM DOWN HILL OF THE AREA
TO BE CONTROLLED.

BERM SHOULD BE A MINIMUM 12" HIGH AND 12" WIDE.

USE EQUIPMENT TO COMPACT EARTHEN BERM BY ROLLING OVER BERM TO MINIMIZE SPREAD.



- SWPPP
- Stormwater
- Erosion Control
- Reclamation
- Seeding

www.e2rc.com | 505.867.4040

[illegible]

SEVANO DEVELOPMENT, LLC
SEVANO PLACE SUBDIVISION
BMP DETAILS

DESIGNED BY:
K. FETTER, P.E.
DRAWN BY:
S. FETTER

SHEET:

4



ANCHOR THE BARRIER NETTING OVER THE CURB WITH WOODEN STAKES IF ABLE. IF UNABLE TO DO THAT ANCHOR THE WATTLE WITH SAND BAGS ON EACH END.



KEEP CUTBACK AREA CLEAN AND FREE OF TRASH AND DEBRIS.



- SWPPP
- Stormwater
- Erosion Control
- Reclamation
- Seeding

www.e2rc.com | 505.867.4040



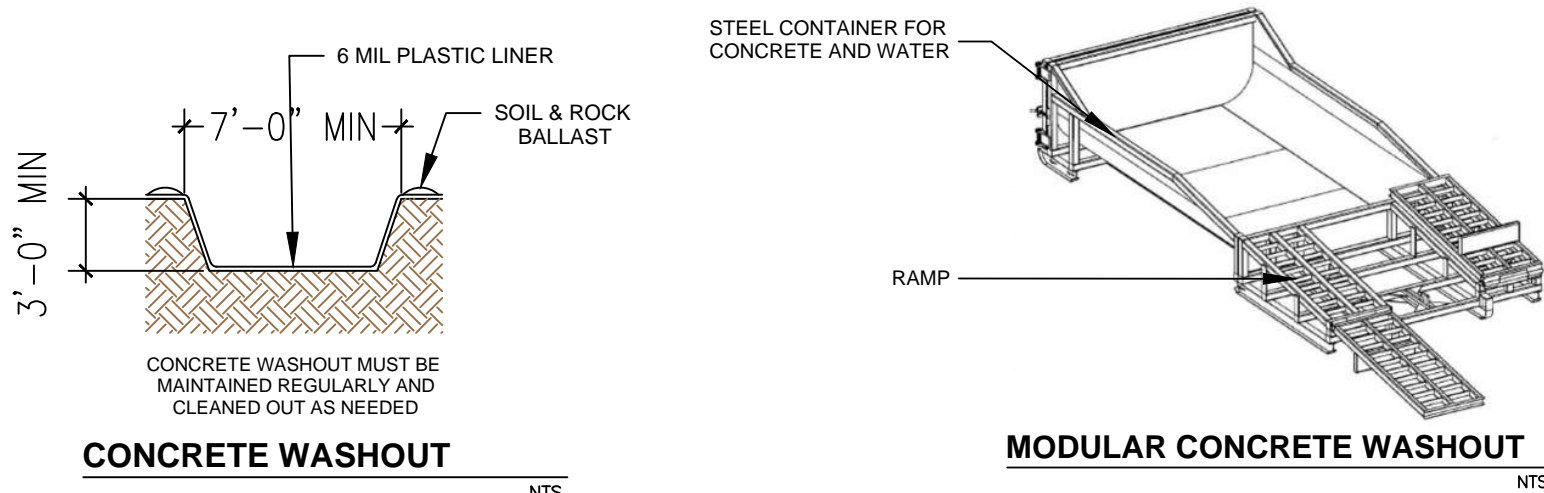
#	REVISION ITEM	DATE

SEVANO DEVELOPMENT, LLC
SEVANO PLACE SUBDIVISION
BMP DETAILS

DESIGNED BY:
K. FETTER , P.E.
DRAWN BY:
S. FETTER

SHEET:

5



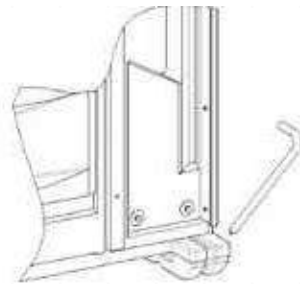
CONCRETE WASHOUT

LOCATE WASHOUT AT LEAST 50 FT FROM STORMDRAINS, OPEN DITCHES, WATER BODIES OR PROJECT PERIMETER. A SIGN SHOULD BE INSTALLED ADJACENTLY TO THE WASHOUT.

WASH OUT WASTE INTO THE WASHOUT WHERE THE CONCRETE CAN SET, BE BROKEN UP AND DISPOSED OF CORRECTLY.

DO NOT CREATE RUNOFF BY DRAINING WATER TO BERMED AREA OR BY COLLECTING THE WATER WASTE WHEN WASHING CONCRETE TO REMOVE PARTICLES AND EXPOSE THE AGGREGATE.

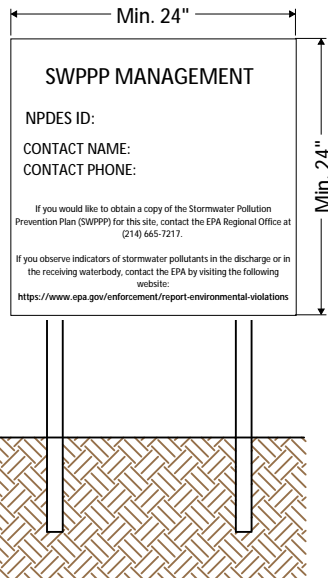
DO NOT WASH SWEEPINGS FROM EXPOSED AGGREGATE CONCRETE INTO THE STREET, STORMDRAIN SYSTEMS OR OFF THE PROJECT SITE.



PORTABLE TOILET STAKING

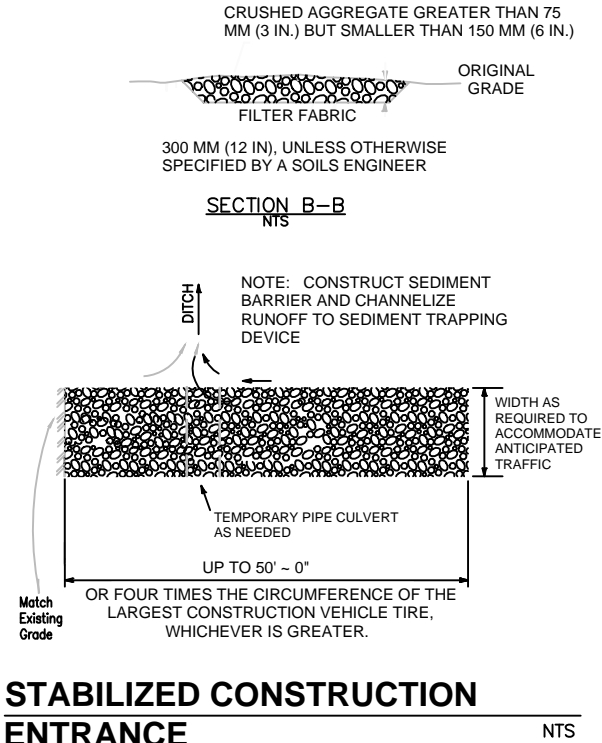
PLACE THE PORTABLE TOILET ON LEVEL GROUND. A FLAT PAVED SURFACE IS BEST IF AVAILABLE.

DRIVE THE STAKES OVER THE SKIDS OF THE PORTABLE TOILET, AROUND ALL SIDES.



NPDES Permit must be positioned at the most active part of the project where it can be viewed by the public (e.g. project entrance).

NPDES POSTING BOARD



STABILIZED CONSTRUCTION ENTRANCE

CONSTRUCT THE ENTRANCE ON A LEVEL SURFACE WHERE AN UNPAVED ROAD MEETS A PAVED ROAD. TYPICALLY AT PROJECTS ACCESS AREA.

GRADE THE ENTRANCE TOWARD THE CONSTRUCTION SITE TO PREVENT RUNOFF.

INSPECT THE ENTRANCE TO KEEP TRASH AND DEBRIS OUT OF THE WAY.

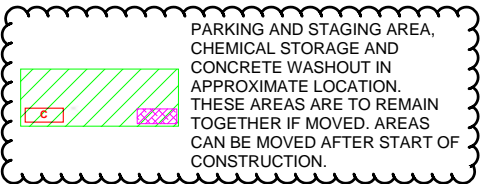
AFTER PRECIPITATION EVENTS, INSPECT THE ENTRANCE FOR ANY REPAIRS THAT MAY BE NEEDED.



SWPPP
Stormwater
Erosion Control
Reclamation
Seeding

DRAWING KEY

- POST - CONSTRUCTION FLOW
- PRE - CONSTRUCTION FLOW
- SILT FENCE
- WATTLE OR SOCK
- SPOILS PILE PROTECTION
- EARTHEN BERM
- INLET PROTECTION
- NATURAL BUFFER
- PARKING AND STAGING AREA
- CONCRETE WASHOUT
- STABILIZED CONSTRUCTION ENTRANCE
- VEGETATIVE STABILIZATION
- ENDANGERED/THREATENED SPECIES
- CHEMICAL STORAGE
- CHECK DAM
- TEMP TOILET
- LOCATION FOR PUBLIC NOTIFICATION OF NPDES
- PROJECT BOUNDARY
- DISTURBED AREA
- PROJECT AND DISTURBED BOUNDARY
- CULVERT BLANKET
- CUTBACK CURB

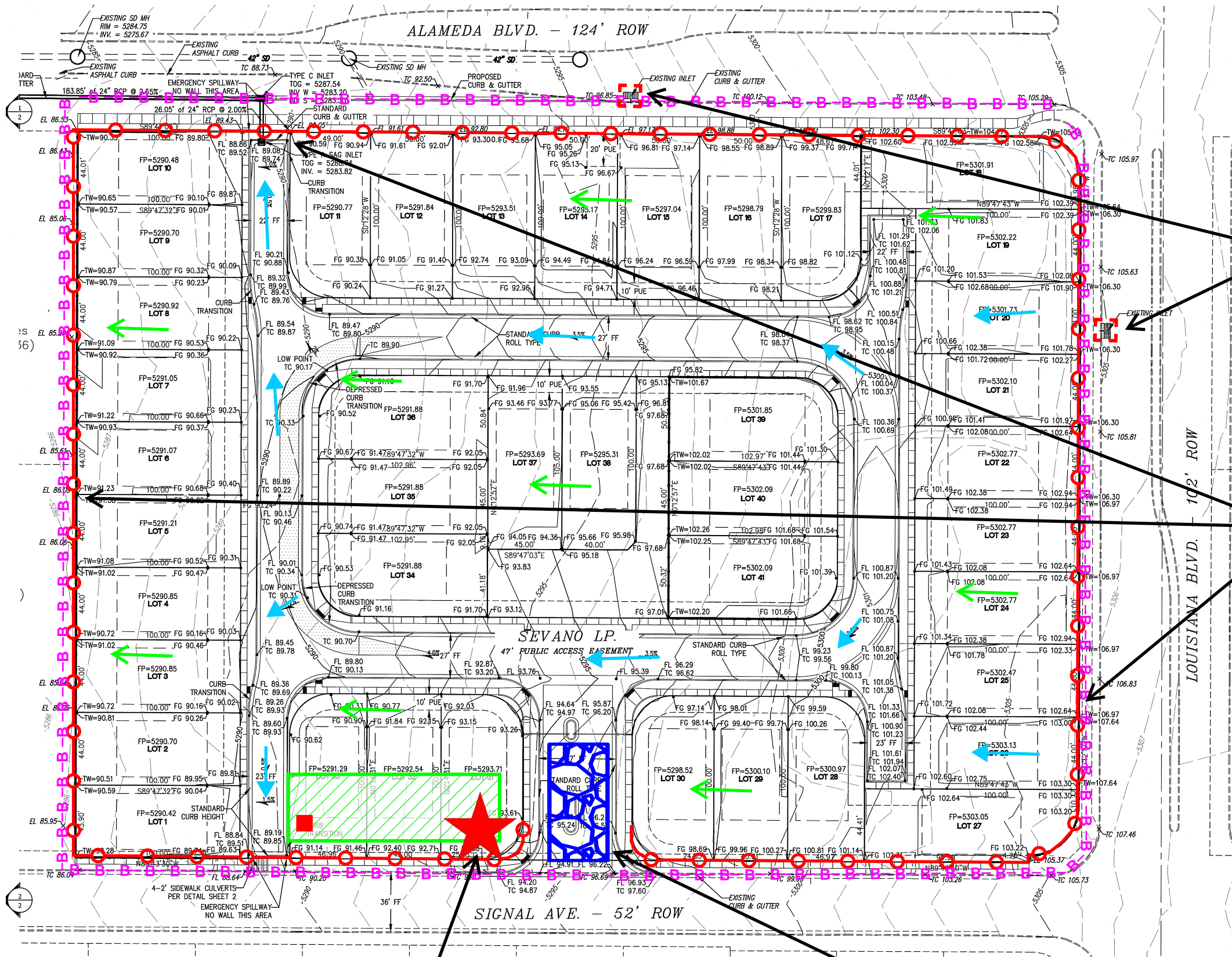


DATE

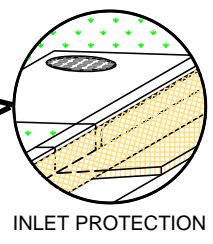
REVISION ITEM

DESIGNED BY:
K. FETTER, P.E.
DRAWN BY:
S. FETTER

SHEET:
6

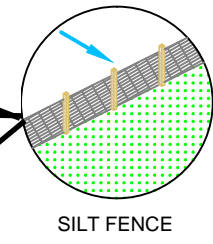


IMPLEMENTATION	
BMP INSTALL	BMP REMOVE
FINAL STABILIZATION	

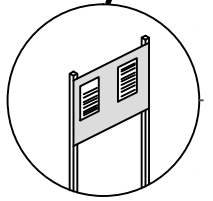
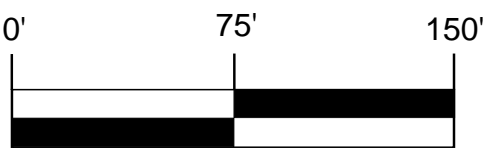


INLET PROTECTION

IMPLEMENTATION	
BMP INSTALL	BMP REMOVE
FINAL STABILIZATION	

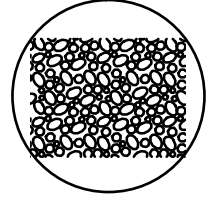


SILT FENCE



NPDES PERMITTING

IMPLEMENTATION	
BMP INSTALL	BMP REMOVE
FINAL STABILIZATION	



STABILIZED CONSTRUCTION ENTRANCE

IMPLEMENTATION	
BMP INSTALL	BMP REMOVE
FINAL STABILIZATION	



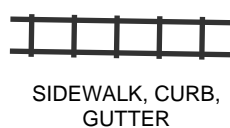
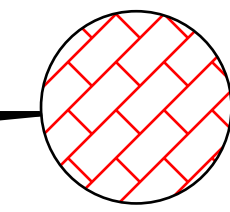
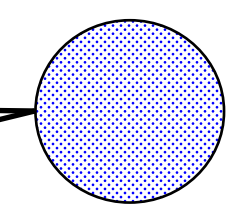
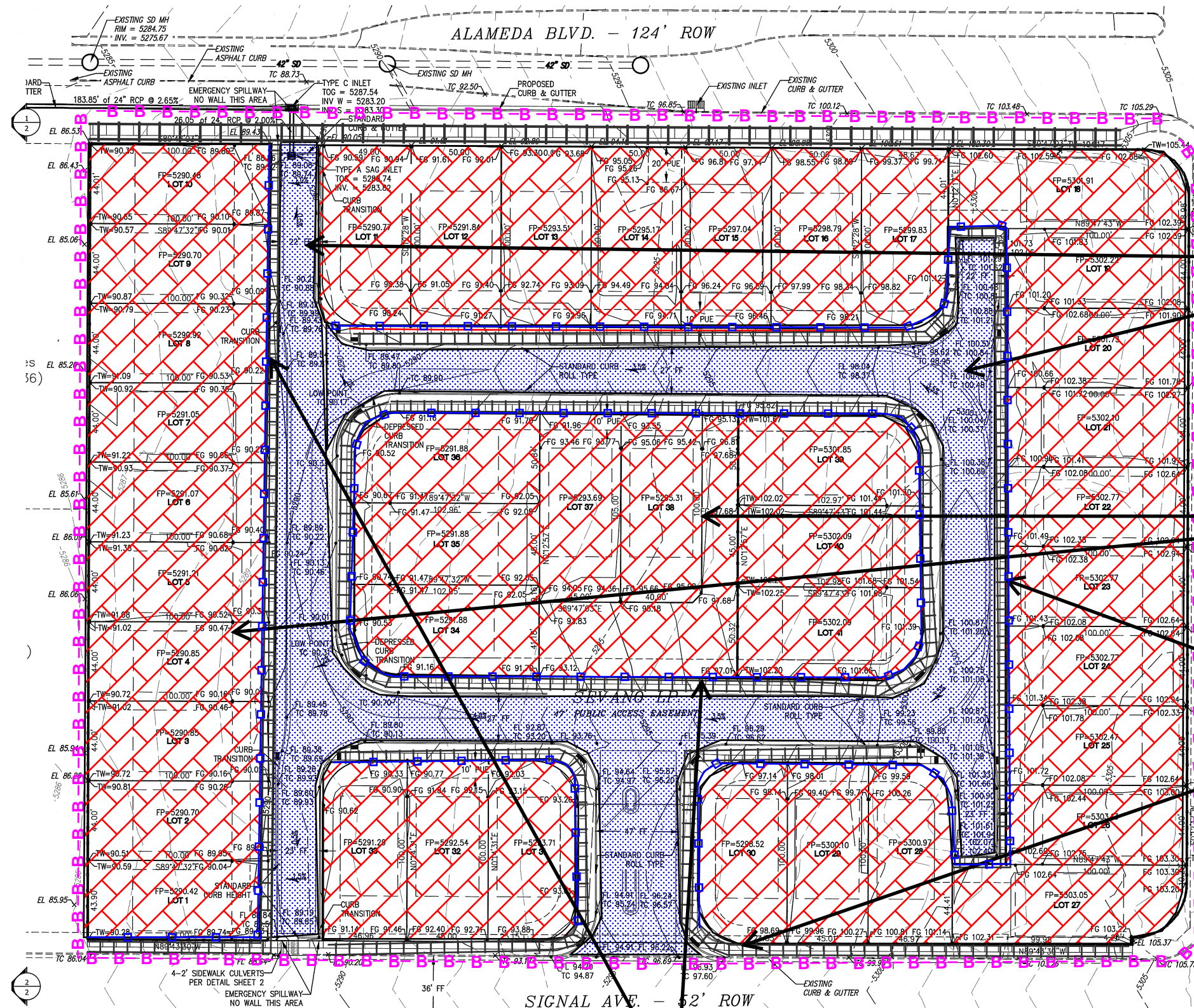
- SWPPP
- Stormwater
- Erosion Control
- Reclamation
- Seeding



SEVANO DEVELOPMENT, LLC
SEVANO PLACE SUBDIVISION
TESCP

DESIGNED BY:
K. FETTER, P.E.
DRAWN BY:
S. FETTER

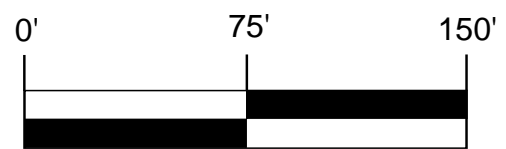
SHEET:



FINAL STABILIZATION

FINAL STABILIZATION

FINAL STABILIZATION



CURB CUT BACK

FINAL STABILIZATION



- SWPPP
- Stormwater
- Erosion Control
- Reclamation
- Seeding

www.e2rc.com | 505.867.4040

				DATE
				REVISION ITEM
				#
SEVANO DEVELOPMENT, LLC SEVANO PLACE SUBDIVISION FINAL STABILIZATION				
DESIGNED BY: K. FETTER, P.E.				
DRAWN BY: S. FETTER				
SHEET:				8