



VIGIL & ASSOCIATES
ARCHITECTURAL GROUP, P.C.

MARCH 31, 2020

**ERNEST P. GOMEZ
PLANNING DEPARTMENT,
CITY OF ALBUQUERQUE
ALBUQUEURQUE, NM 87107**

RE: NORTH DOMINGO BACA MULTIGENERATIONAL CENTER PHASE 3- 7521 CARMEL AVE
NE

I, **RAYMOND VIGIL, NMRA #004027**, OF THE FIRM **VIGIL AND ASSOCIATES ARCHITECTURAL GROUP**, HEREBY CERTIFY THAT THIS PROJECT IS IN SUBSTANTIAL COMPLIANCE WITH AND IN ACCORDANCE WITH THE DESIGN INTENT OF THE APPROVED ADMINISTRATIVE AMENDMENT TO THE DRB PLAN DATED NOVEMBER 8, 2016 (ORIGINAL DRB APPROVAL WAS ON APRIL 17, 2009).

THE RECORD INFORMATION EDITED ONTO THE ORIGINAL DESIGN DOCUMENT HAS BEEN OBTAINED BY TIM SANCHEZ OF THE FIRM MICK RICH CONTRACTORS. I FURTHER CERTIFY THAT I HAVE PERSONALLY VISITED THE PROJECT SITE ON **FRIDAY MARCH 27, 2020** AND HAVE DETERMINED BY VISUAL INSPECTION THAT THE ADMINISTRATIVE AMENDMENT PLAN IS REPRESENTATIVE OF ACTUAL SITE CONDITIONS AND IS TRUE AND CORRECT TO THE BEST OF MY KNOWLEDGE AND BELIEF. THIS CERTIFICATION IS SUBMITTED IN SUPPORT OF A REQUEST FOR CERTIFICATE OF OCCUPANCY.

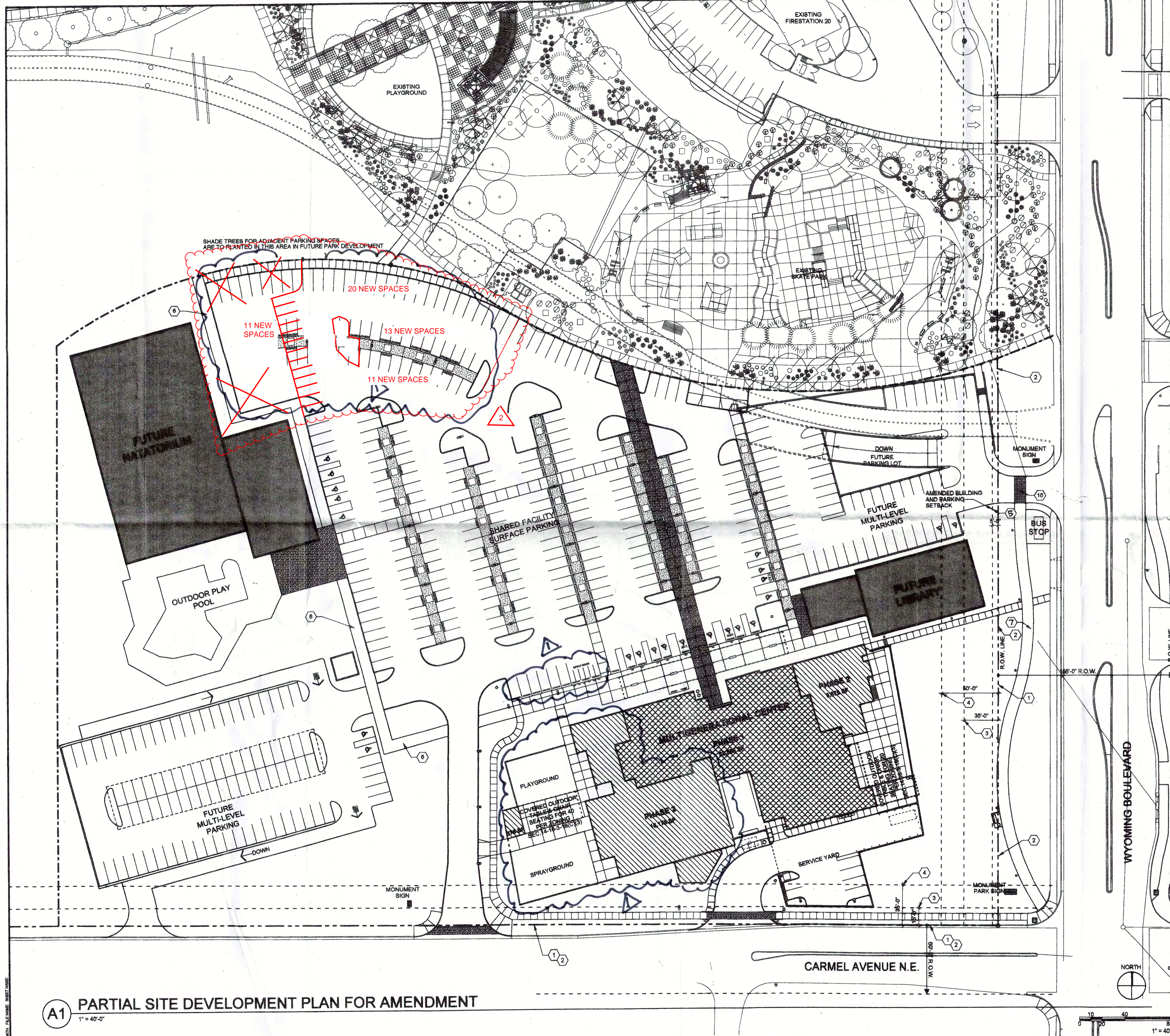
PLANS WERE BUILT AND ARE CERTIFIED TO THE APPROVED PERMIT SET PER ATTACHED SHEET AS-101 AND AS-103. THE OVERALL DESIGN INTENT IS PRESERVED.

THE RECORD INFORMATION PRESENTED HEREON IS NOT NECESSARILY COMPLETE AND INTENDED ONLY TO VERIFY SUBSTANTIAL COMPLIANCE OF THE TRAFFIC ASPECTS OF THIS PROJECT. THOSE RELYING ON THE RECORD DOCUMENT ARE ADVISED TO OBTAIN INDEPENDENT VERIFICATION OF ITS ACCURACY BEFORE USING IT FOR ANY OTHER PURPOSE.

SIGNATURE OF ENGINEER OR ARCHITECT



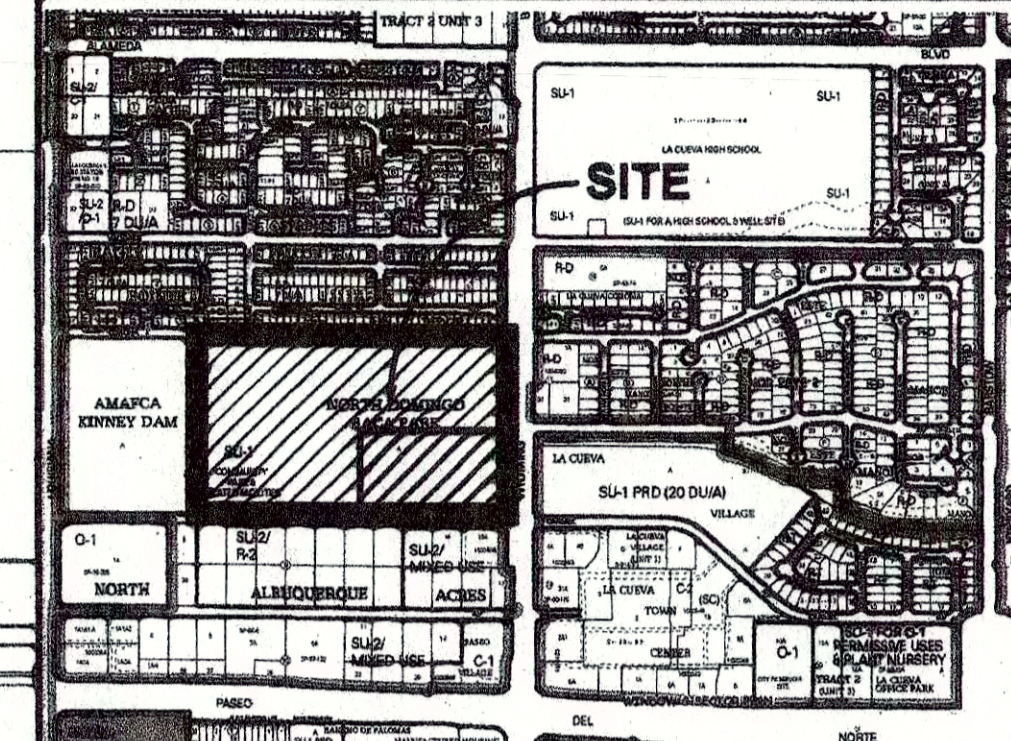
ENGINEER'S OR ARCHITECT'S STAMP



PROJECT DESIGN DATA

LEGAL DESCRIPTION: TRACT A, NORTH DOMINGO BACA PARK
 ZONING: SU-1

VICINITY MAP ZONE ATLAS C-19



SHEET KEYNOTES

- EXISTING PROPERTY LINE
- EXISTING RIGHT OF WAY
- EXISTING PARKING SETBACK FROM RIGHT OF WAY
- EXISTING BUILDING SETBACK FROM RIGHT OF WAY
- PROPOSED BUILDING AND PARKING SETBACK FROM RIGHT-OF-WAY (5'-0")
- FUTURE CONCRETE SIDEWALK
- NEW ASPHALT BIKEWAY PATH

AS BUILT REVISIONS
 03-27-2020-rv

ADMIN. AMENDMENT
 FILE # 10107 PROJECT # 1003921
 REVISIONS TO BLDG FACADE +
 CONFIGURATION, LANDSCAPED AREAS
 AND PARKING AS SHOWN IN
 11.8.2014

PLANS CHECKING OFFIC
 824-3811
 APPROVED/DISAPPROVED
 HYDRANT(S) ONLY
 Signature: [Signature] 3/3/09
 SIGNATURE & DATE

PLANS CHECKING OFFIC
 824-3811
 APPROVED/DISAPPROVED
 HYDRANT(S) ONLY

PROJECT NUMBER: 1003921
 Application Number: 08 EPC-40097

This plan is consistent with the specific Site Development Plan approved by the Environmental Planning Commission (EPC), dated October 16, 2008 and the Findings and Conditions in the Official Notification of Decision are satisfied.

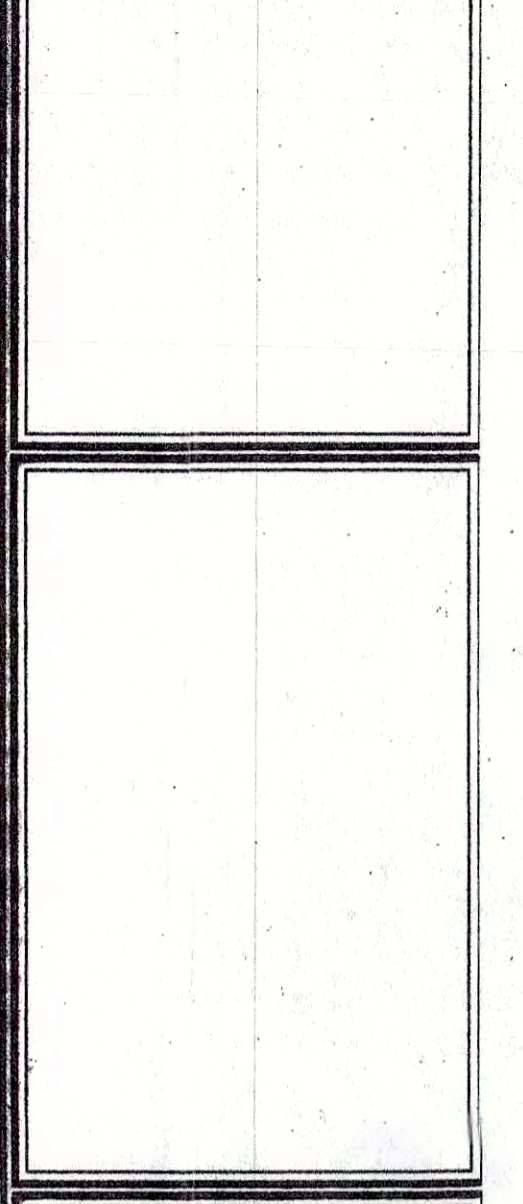
DRB SITE DEVELOPMENT SIGNOFF APPROVAL:
 [Signature] 04-17-09
 TRAFFIC ENGINEERING, TRANSPORTATION DIVISION DATE

[Signature] 4-1-09
 ABCWA DATE

Christine Sandoval 4/1/09
 PARKS AND RECREATION DEPARTMENT DATE

[Signature] 4-1-09
 CITY ENGINEER DATE

N/A
 ENVIRONMENTAL HEALTH DEPARTMENT (conditional) DATE
 [Signature] 3-3-09
 SOLID WASTE MANAGEMENT DATE
 [Signature] 4-17-09
 DRB CHAIRPERSON, PLANNING DEPARTMENT DATE



**NORTH DOMINGO BACA
 MULTIGENERATIONAL CENTER**
 CITY OF ALBUQUERQUE
 WYOMING BLVD. & CARMEL AVE. NE
 ALBUQUERQUE, NM
 AUGUST 2008

NO.	REVISIONS	DATE	DESCRIPTION
04/01/09	DRB REVISIONS		
02/02/09	DRB REVISIONS		
09/26/08	EPC REVISIONS		
09/11/08	EPC REVISIONS		
	MMDDYY		DESCRIPTION

PROJECT NO:
 FILE NAME:
 DRAWN BY:
 CHECKED BY:
 COPYRIGHT:
 OTHER:

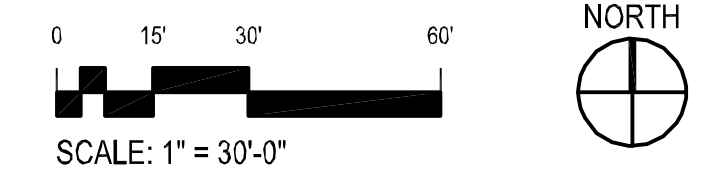
**PARTIAL SITE
 DEVELOPMENT
 PLAN FOR
 AMENDMENT**

A-101
 DWG. G-105 SHEET OF 06 188

A1 PARTIAL SITE DEVELOPMENT PLAN FOR AMENDMENT
 1" = 40'-0"



A1 OVERALL SITE PLAN
SCALE: 1" = 30'-0"



GENERAL NOTES

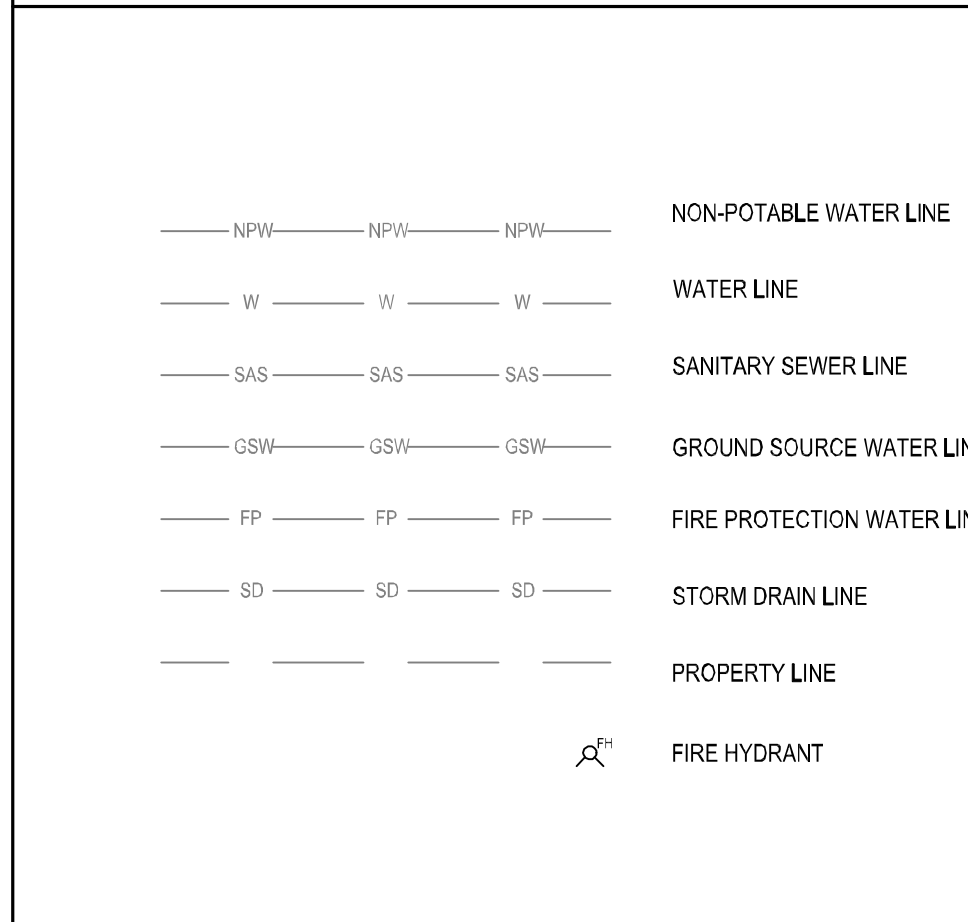
- A. SEE ENLARGED DETAILS FOR ALL DIMENSIONS.
- B. SEE SHT AS103 FOR ALL DIMENSIONS.
- C. AT AREAS OF CONFLICT, THE CONTRACTOR SHALL MAINTAIN EXISTING ADJACENT UTILITIES AND SHALL BE RESPONSIBLE FOR PROTECTING UNDERGROUND UTILITIES WITH LOCUS UTILITY COMPANIES AND TO SITE INVESTIGATE (HAND DIG - AS REQD).
- D. GENERAL CONTRACTOR SHALL NOTIFY THE ARCHITECT OF ANY CONFLICT WITH SITE UTILITIES OR FEATURES AND OBTAIN RESOLUTION PRIOR TO PROCEEDING WITH THE WORK.
- E. CONTRACTOR SHALL TAKE PRECAUTIONS AS NECESSARY TO PROTECT FROM DAMAGING EXISTING UTILITY LINES, WALKS, LANDSCAPING, ETC. WHICH WILL REMAIN AS PART OF THE FINAL SYSTEM. CONTRACTOR SHALL REPAIR AND/OR RESTORE THESE ITEMS AS REQUIRED TO PRE-CONSTRUCTION CONDITION.
- F. SLOPE PAVEMENT MINIMUM 1%, MAXIMUM 2% FOR ACCESSIBILITY. SEE CIVIL DRAWINGS FOR GRADING AND DRAINAGE.
- G. SEE COLOR & MATERIAL SCHEDULE ON SHEET A-603 FOR PAINT COLORS OF EXPOSED STRUCTURAL STEEL.

RETAINING WALLS: ALL PROJECT RETAINING WALLS WILL BE INCLUDED IN THE CONSTRUCTION CONTRACT, BUT PERMITTED SEPARATELY FROM PURPOSES OF PERMITTING. THERE ARE 909 LN FT OF 3 FT HIGH CMU RETAINING WALLS.

SHEET KEYNOTES

1. EXISTING CONC. SIDEWALK. PROVIDE PROTECTION DURING CONSTRUCTION.
2. NEW RETAINING WALL SYSTEM. SEE DETAIL B3/AS-501.
3. EXISTING LANDSCAPED AREAS. PROVIDE PROTECTION AND MAINTAIN THROUGHOUT CONSTRUCTION.
4. NEW 4" CONCRETE SITE PAVING. PROVIDE CONTROL AND EXPANSION JOINTS AS SHOWN AND PER B4/AS-503.
5. NEW CONCRETE SIDEWALK / MOW STRIP.
6. EXISTING FIRE HYDRANT.
7. NEW CMU SITE WALL @ PLAYGROUND. SEE DETAIL A3/AS-503.
8. NEW FIRE HYDRANT. SEE SHEET C-105.
9. NEW POST INDICATOR VALVE. SEE SHEET C-504 FOR DETAIL.
10. NEW FIRE DEPARTMENT CONNECTION. SEE SHEET C-504 FOR DETAIL.
11. NEW LIGHT & POLE. SEE SHEET ES-101 AND DETAIL AS/AS-301. TYPICAL.
12. (2) 8' BENCHES WITH SHADING PER CITY OF ALBUQUERQUE ZONING CODE SECTION 14-1-3-18 (C)(3). 1 SEAT/25FT - 20'FT/25 = 6 SEATS.
13. FIRE RISER LOCATION INSIDE BUILDING. SEE SHEET A-102.
14. NEW HANDICAPPED PARKING SPACES. SEE SHEET AS-102.
15. (4) MOTORCYCLE SPACES. PROVIDE NEW SIGNAGE AND STRIPING.
16. EXISTING HOPE GROUND SOURCE WATER PIPING TO REMAIN UNDISTURBED DURING ALL CONSTRUCTION ACTIVITIES INCLUDING OVER-EXCAVATION AND EXCAVATION FOR BUILDING AND RETAINING WALL FOUNDATION. CONTRACTOR SHALL PROVIDE FOR SUBSURFACE UTILITY ENGINEERING TO VERIFY PIPE LOCATIONS AND DEPTH PRIOR TO THE COMMENCEMENT OF WORK.
17. PROVIDE NEW WATER LINE UNDER EXISTING ENTRANCE DRIVE AND SIDEWALK ENTRANCE DRIVE SHALL REMAIN OPEN AND UNOBSTRUCTED FOR ALL HOURS THE FACILITY IS OPEN FOR THE DURATION OF THE PROJECT. CUTS AT ASPHALT PAVING SHALL EXTEND TO BACK SIDE OF CONCRETE APRON. CUTS IN CONCRETE CURBS, GUTTERS AND SIDEWALKS SHALL EXTEND TO NEXT CONTROL JOINT. THE CONTRACTOR IS RESPONSIBLE FOR COORDINATING AND OBTAINING REQUIRED UTILITY EASEMENT FROM WATER AUTHORITY AS WELL AS PERMITTING AND CONNECTION FEES. CONTRACTOR SHALL PROVIDE FOR SUBSURFACE UTILITY ENGINEERING TO VERIFY PIPE LOCATIONS AND DEPTH PRIOR TO THE COMMENCEMENT OF WORK. SEE SHEET C-105 FOR FURTHER INFORMATION.
18. RAILING ALONG ENTIRE EDGE OF APRON. REFER TO D3/AS-503 FOR RAILING DETAIL. (NOTE: RAILING NOT REQUIRED IF ALTERNATE #4 IS ACCEPTED.)

LEGEND

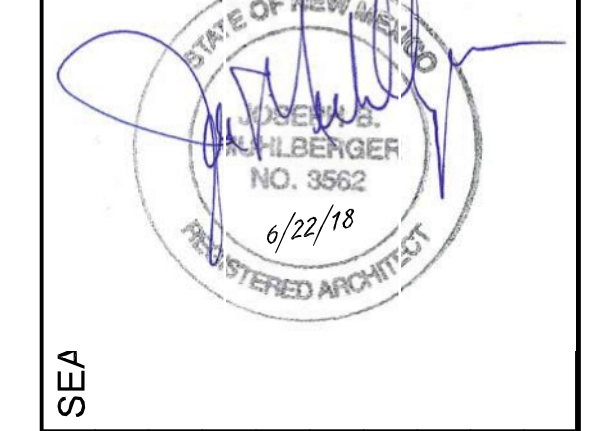


AS-BUILT INFORMATION	
CONTRACTOR	DATE
WORK	DATE
INSPECTED BY	DATE
APPROVED BY	DATE
REVISION BY	DATE
DRAWING	DATE
CONSTRUCTION	DATE
RECORDED BY	DATE
NO.	DATE

BENCH MARKS	
NO.	DATE

SURVEY INFORMATION	
FIELD NOTES	DATE
NO.	DATE

REVISIONS	
NO.	DATE
BY	DATE
DATE	DATE
DATE	DATE



DESIGN	
DESIGNED BY: V/A	DATE:
DRAWN BY: V/A	DATE:
CHECKED BY: RRV	DATE:



CITY OF ALBUQUERQUE
CAPITAL IMPLEMENTATION PROGRAM
NORTH DOMINGO BACA MULTIGENERATIONAL CENTER - PHASE III
7521 CARMEL AVE. NE, ALBUQUERQUE, NM 87113

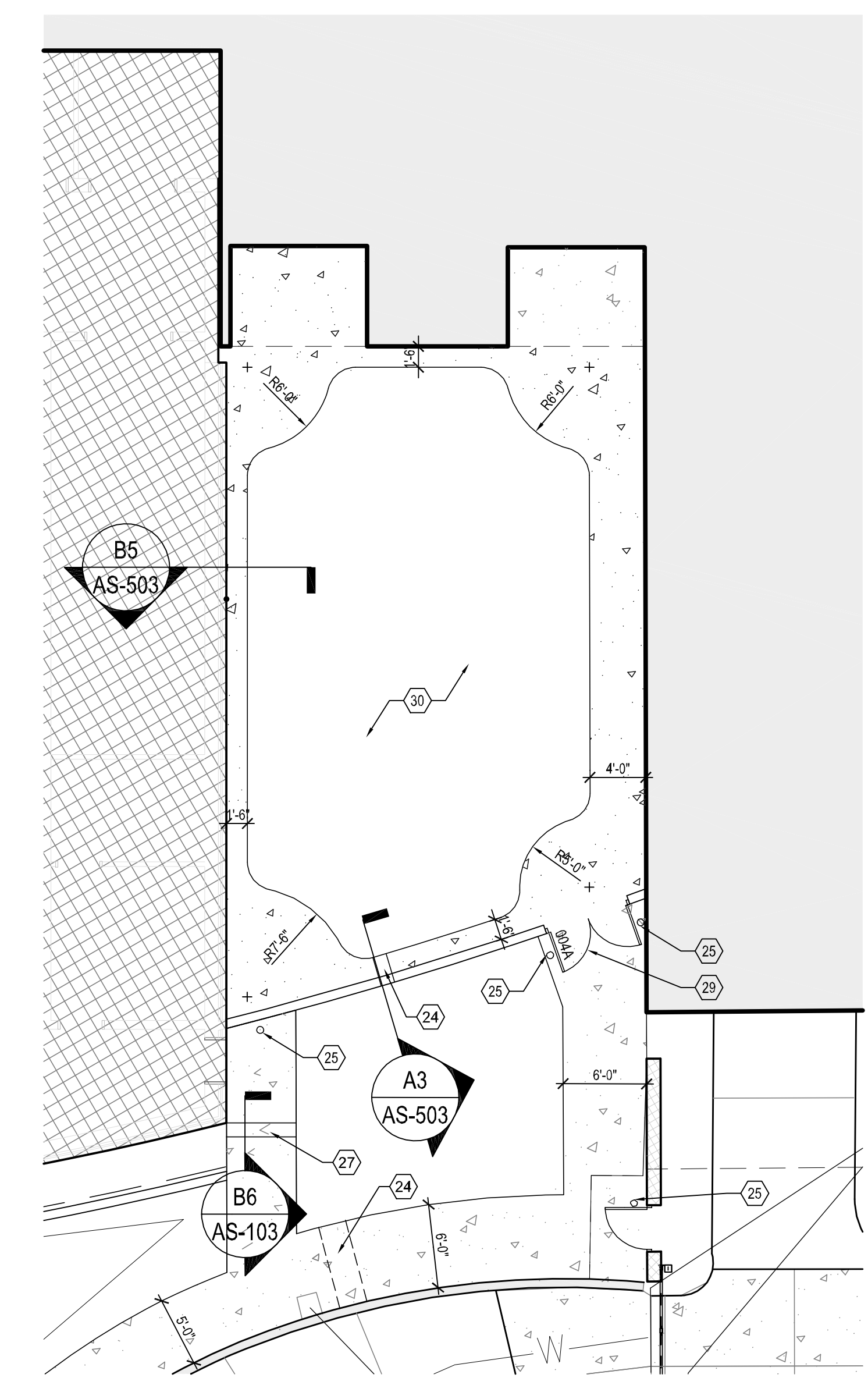
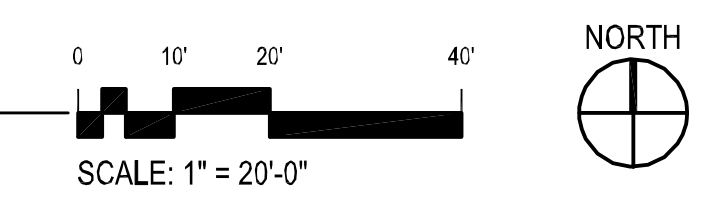
Drawing Title		Mo./Day/Yr.	
OVERALL SITE PLAN		03/18/2016	04/02/2018
Design Review Committee	City Engineer Approval	04/08/2016	06/22/2018
		07/08/2016	
		08/29/2016	
		12/16/2016	
City Project No.	Zone Map No.	Sheet	
7136.95	C-19-Z	AS-101	

164 PROJECT NO. 15-015

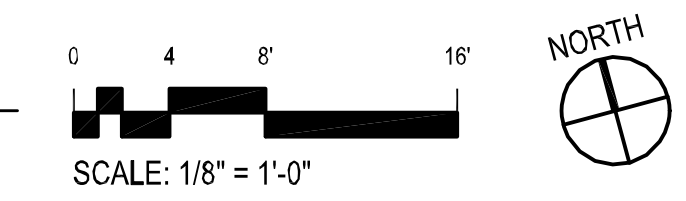
D
C
B
A



C1 ENLARGED SITE PLAN - PARKING
SCALE: 1" = 20'-0"



A4 ENLARGED SITE PLAN - PLAYGROUND
SCALE: 1/8" = 1'-0"



GENERAL NOTES

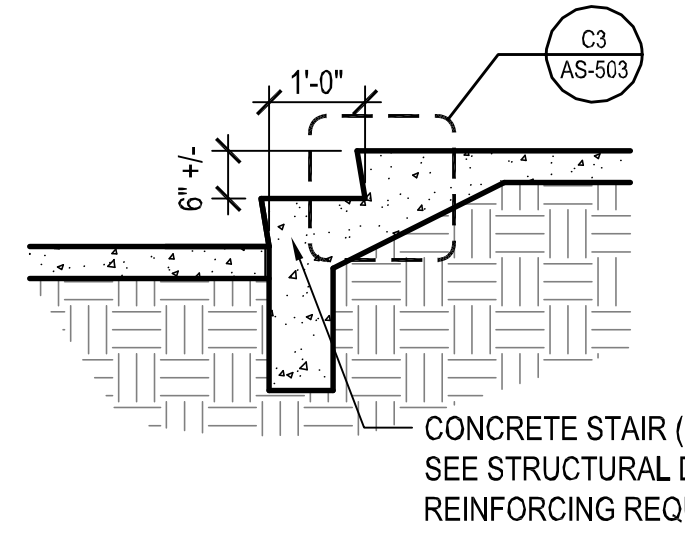
- A. SEE ENLARGED DRAWINGS FOR DETAILS.
- B. SEE SHIT AS-101 FOR DETAILS.
- C. AT AREAS OF EXISTING ASPHALT TO MATCH THE CO.
- D. GENERAL CONSTRUCTION SHALL BE UNDERGROUND UTILITIES WITH (HAND DIG - AS REQ'D).
- E. THE CONTRACTOR SHALL NOTIFY THE ARCHITECT OF ANY CONFLICT WITH SITE UTILITIES OR FEATURES AND OBTAIN RESOLUTION PRIOR TO PROCEEDING WITH THE WORK.
- F. CONTRACTOR SHALL TAKE PRECAUTIONS AS NECESSARY TO PROTECT FROM DAMAGING EXISTING UTILITY LINES, WALKS, LANDSCAPING, ETC. WHICH WILL REMAIN AS PART OF THE FINAL SYSTEM. CONTRACTOR SHALL REPAIR AND/OR RESTORE THESE ITEMS AS REQUIRED TO PRE-CONSTRUCTION CONDITION.
- G. SLOPE PAVEMENT MINIMUM 1%, MAXIMUM 2% FOR ACCESSIBILITY. SEE CIVIL DRAWINGS FOR GRADING AND DRAINAGE.
- H. SEE COLOR & MATERIAL SCHEDULE ON SHEET A-603 FOR PAINT COLORS OF EXPOSED STRUCTURAL STEEL.

SHEET KEYNOTES

1. NEW ASPHALT PAVING. SEE SECTION DETAIL B2/C-502.
2. NEW STRIPING. SEE SPECIFICATION 32 1723.13.
3. NEW CONC. CURB AND GUTTER. SEE DETAIL A3/C-502.
4. NEW CONC. HEADER CURB. SEE DETAIL A3/C-502.
5. CAST INSITU PAVING SYSTEM. SEE DETAIL D1/AS-503. PATTERN SHALL BE SEGMENTED AND ROTATE AT CENTER OF PLANTER.
6. EXPANSION JOINT AT CAST INSITU PAVING SYSTEM. SEE DETAIL D2/AS-503. JOINTS LOCATED WHERE PATTERN IS SEGMENTED.
7. CONCRETE PARKING BUMPERS SEE DETAIL AND SPECIFICATION 32 1713.
8. 5'-4" x 5'-0" TREE PLANTER BLOCK CUT IN CAST INSITU PAVING SYSTEM. SEE DETAIL D1/AS-503 AND LANDSCAPE DRAWINGS.
9. NEW STORM DRAIN INLET. SEE CIVIL SHEET C-103.
10. NEW STORM DRAIN PIPE. SEE CIVIL SHEET C-103.
11. NOT USED
12. NOT USED
13. NOT USED
14. NOT USED
15. NOT USED
16. NOT USED
17. NOT USED
18. NOT USED
19. REMOVE AND RELOCATE EXISTING LIGHT BOLLARD. PROVIDE NEW FOUNDATION AND ELECTRICAL CONNECTIONS AS REQUIRED FOR COMPLETE INSTALLATION.
20. EXISTING FENCE TO REMAIN.
21. RELOCATED FENCE. SEE SHEET ASD-101.
22. RELOCATED GATE. SEE SHEET ASD-101.
23. APPROXIMATE SAW CUT LINE OF EXISTING ASPHALTIC PAVING AFTER DEMOLITION OF CURB AND GUTTER. SEE DEMOLITIONS PLAN ASD-101.
24. NEW DRAINAGE SIDEWALK CULVERT WITH STEEL PLATE PER CEA STANDARD DETAIL 2236. SEE SHEET C-103 FOR SIZE.
25. NEW METAL BOLLARD. SEE DETAIL A5/AS-503.
26. NOT USED
27. CONCRETE STEPS. SEE DETAIL B6/AS-103.
28. NEW LIGHT AND POLE. SEE SHEET ES-101 AND DETAIL A5/S-301
29. NEW GATE. SEE ELEVATION C2/AS-502
30. AGGREGATE BASE COURSE. INSTALL TO FLUSH W/ CONCRETE. SEE LANDSCAPE PLAN L-102.

LEGEND

— NPW —	NPW	NPW	NON-POTABLE WATER LINE
— W —	W	W	WATER LINE / GROUND SOURCE WATER LINE
— SAS —	SAS	SAS	SANITARY SEWER LINE
— FP —	FP	FP	FIRE PROTECTION WATER LINE
— SD —	SD	SD	STORM DRAIN LINE
— — —			PROPERTY LINE
			⊕ FIRE HYDRANT



B6 STEP DETAIL
SCALE: 1/2" = 1'-0"

VIGIL & ASSOCIATES
ARCHITECTURAL GROUP, P.C.
4477 Irving NW, Suite A
Albuquerque, New Mexico 87114
Ph: 505.890.5530 - Fax: 505.890.5031
www.vigilarchitects.com



**CITY OF ALBUQUERQUE
CAPITAL IMPLEMENTATION PROGRAM**

NORTH DOMINGO BACA MULTIGENERATIONAL CENTER - PHASE III
7521 CARMEL AVE. NE, ALBUQUERQUE, NM 87113

ENLARGED SITE PLANS

Design Review Committee	City Engineer Approval	Mo./Day/Yr. 03/18/2016	Mo./Day/Yr. 04/02/2018
		04/08/2016	
		07/08/2016	
		08/29/2016	
		12/16/2016	

City Project No. 7136.95	Zone Map No. C-19-Z	Sheet AS-103
-----------------------------	------------------------	------------------------

AS-BUILT INFORMATION

DATE	DATE
CONTRACTOR	RECORDED BY
DATE	DATE
DATE	DATE
DATE	DATE
DATE	DATE

BENCH MARKS

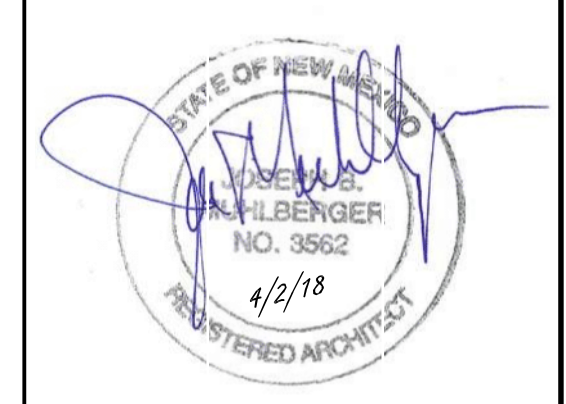
NO.	BY	DATE

**SURVEY INFORMATION
FIELD NOTES**

NO.	BY	DATE

REVISIONS

NO.	DATE	BY	REVISIONS



DESIGN

DATE	BY	DATE	BY

DESIGN

DATE	BY	DATE	BY