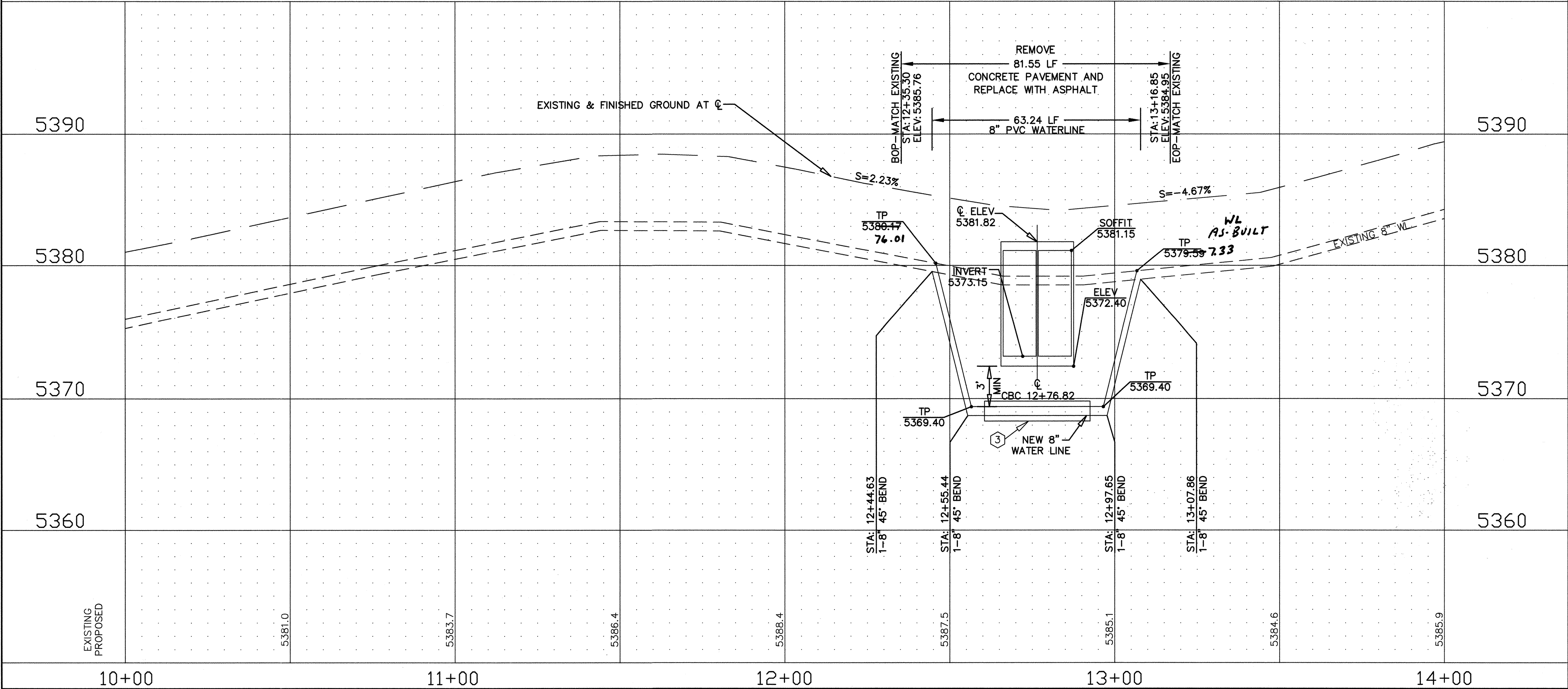


EAGLE ROCK ROAD



GENERAL NOTES

- SEE SHEET C11 FOR DETAILS ON PAVEMENT AND WATER SHUT-OFF PLAN
- INSTALL ELECTRONIC MARKING DISKS (EMD) PER COA STANDARD SPEC. 170
- PHASE 1 TRAFFIC CONTROL PLAN SHALL BE IN PLACE PRIOR TO CONSTRUCTION WITHIN EAGLE ROCK ROW. SEE SHEET T1.

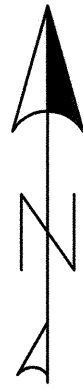
NOTE:
AS-BUILT INFORMATION SHOWN HEREIN IS BASED UPON INFORMATION PROVIDED BY THE CONTRACTOR AFTER COMPLETION OF THE PROJECT. NO ADDITIONAL MEASUREMENTS OR VERIFICATIONS WERE PERFORMED, AND NO CERTIFICATION IS MADE AS TO THE ACCURACY OR COMPLETENESS OF THAT INFORMATION.

NUMBERED NOTES

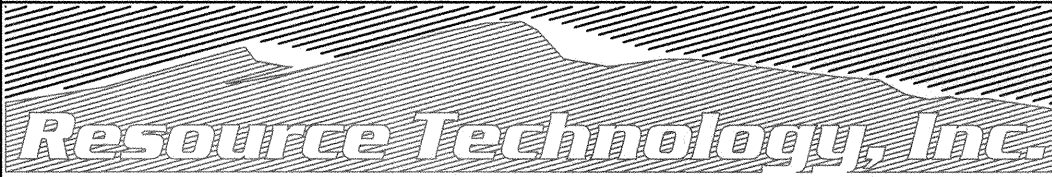
- SAWCUT CARRIER PIPE; REMOVE AND DISPOSE OF 63.24 LF OF 10" PVC AND 18" CARRIER PIPE
- SAWCUT, REMOVE, AND DISPOSE CONCRETE PAVEMENT BEGIN STA: 12+35.30 END STA: 13+16.85
- 32' LF OF 18" STEEL CARRIER PIPE CENTERED ON CBC PER COA STANDARD DWG. 2380
- REMOVE AND DISPOSE OF PLASTIC BOLLARDS, INCIDENTAL TO EAGLE ROCK CONSTRUCTION COST
- SWALE, GRADE TO DRAIN

| STA | RESTRAINED LENGTHS* |
|--|---------------------|
| 12+44.63 | 19 FT |
| 12+55.44 | 3 FT |
| 12+97.65 | 3 FT |
| 13+07.86 | 19 FT |
| RESTRAIN FULL LENGTH WITHIN CARRIER PIPE | |

*RESTRAINED EACH SIDE OF FITTINGS



SCALE: 1" = 5' VERTICAL
1" = 20' HORIZONTAL



Civil Engineering
Environmental Sciences
Water Resources
Landscape Architecture
Planning

5501 Jefferson Blvd. NE, Suite 200
Albuquerque, New Mexico 87109
E-mail: rti@rm.net
Telephone: (505) 243-7300
Facsimile: (505) 243-7400



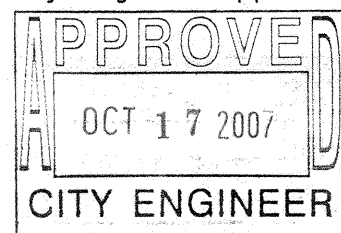
CITY OF ALBUQUERQUE
DEPARTMENT OF MUNICIPAL DEVELOPMENT

LA CUEVA ARROYO DIP REPLACEMENT
EAGLE ROCK ROAD 10+00 TO 14+00

Design Review Committee



City Engineer Approval



Last Design Update

City Project No.

7848.02

Zone Map No.

C-19

Sheet

C10

Of

25

| AS-BUILT INFORMATION | | BENCH MARKS | | SURVEY INFORMATION | | ENGINEER'S SEAL | | REMARKS | |
|----------------------|------|---|---|--------------------|------|-----------------|------|---------|------|
| CONTRACTOR | DATE | ACS BRASS TABLET, STAMPED "1-B20" | INTERSECTION OF MODESTO AVE & BARSTOW ST. GEOGRAPHIC POSITION (NAD 1927), IN FEET | NO. | DATE | NO. | DATE | By | Date |
| WORKS BY | DATE | INTERSECTION OF MODESTO AVE & BARSTOW ST. GEOGRAPHIC POSITION (NAD 1927), IN FEET | | | | | | | |
| ACCEPTANCE BY | DATE | NM STATE PLANE COORDINATES (CENTRAL ZONE) | | | | | | | |
| VERIFICATION BY | DATE | X=410,237.56 Y=1,524,092.46 | | | | | | | |
| DRAWINGS | DATE | ELEV=5474.51 NGVD29, IN FEET | | | | | | | |
| CHECKED BY | DATE | INTERIM NAD83, IN FEET {X=1,550,483.09 Y=1,524,155.51} | | | | | | | |
| RECORDED BY | DATE | G.T.G FACTOR: 0.9996740 {ELEV=5477.18 INTERIM NAVD83} | | | | | | | |
| NO. | | TRANSFORMED TO INTERIM NAVD88 BY CORPSON V 6.0.1 | | | | | | | |