

EAGLE ROCK ALIGNMENT		
LINE TABLE		
LINE	LENGTH	BEARING
ER-L1	687.22	S89°30'01"E

LA CUEVA ARROYO ALIGNMENT		
LINE TABLE		
LINE	LENGTH	BEARING
LA-L2	134.43	S24°56'29"E
LA-L3	135.86	N90°00'00"E

CURVE TABLE				
CURVE	LENGTH	RADIUS	TANGENT	CHORD
LA-C1	50.00	310.45	25.05	49.94
LA-C2	58.42	291.91	29.31	58.32
LA-C3	226.82	500.00	115.40	224.88
LA-C4	207.29	300.00	107.98	203.19

WYOMING ALIGNMENT		
LINE TABLE		
LINE	LENGTH	BEARING
W-L4	117.12	S00°46'24"W
W-L5	68.12	S00°07'09"W
W-L6	192.13	S00°02'31"W
W-L7	273.00	S03°13'22"W

MANHOLE CENTER REFERENCE TO CENTERLINE ALIGNMENT			
MANHOLE	STATION	OFFSET	STREET
MH1	13+49.25	32.48 L	WYOMING
MH2	10+72.66	26.95 L	WYOMING
MH2	15+75.66	0.00 R	EAGLE ROCK

NOTE: WYOMING DETOUR ALIGNMENT SHOWN ON SHEET C12

LOT 15 STORM DRAIN		
LINE TABLE		
LINE	LENGTH	BEARING
L-15-1	85.33	S37°35'40"W

LOT 16 STORM DRAIN		
LINE TABLE		
LINE	LENGTH	BEARING
L-16-1	37.25	S25°52'23"E
L-16-2	19.78	N62°09'57"E

ADDITIONAL SITE CONTROL POINTS

BH-07-07
PK NAIL W/WASHER STAMPED "BH 07", PAINTED PANEL
GEOGRAPHIC POSITION: NAD 1983 (HARN)
NM STATE PLANE GROUND MODIFIED COORDINATES (CENTRAL ZONE)
X=1548883.48 Y=1524681.68
GROUND TO GRID FACTOR: 0.99964740
ELEVATION=5470.27 (NAVD 88)
THIS PANEL IS LOCATED APPROXIMATELY 545 FEET EAST OF THE INTERSECTION OF WYOMING BOULEVARD AND MODESTO AVENUE.

BH-07-06
REBAR W/2" ALUMINUM CAP STAMPED "BH 06" VINYL PANEL
GEOGRAPHIC POSITION: NAD 1983 (HARN)
NM STATE PLANE GROUND MODIFIED COORDINATES (CENTRAL ZONE)
X=1548775.46 Y=1523092.00
GROUND TO GRID FACTOR: 0.99964740
ELEVATION=5410.31 (NAVD 88)
THIS PANEL IS LOCATED APPROXIMATELY 400 FEET EAST OF THE INTERSECTION OF WYOMING BOULEVARD AND OAKLAND AVENUE.

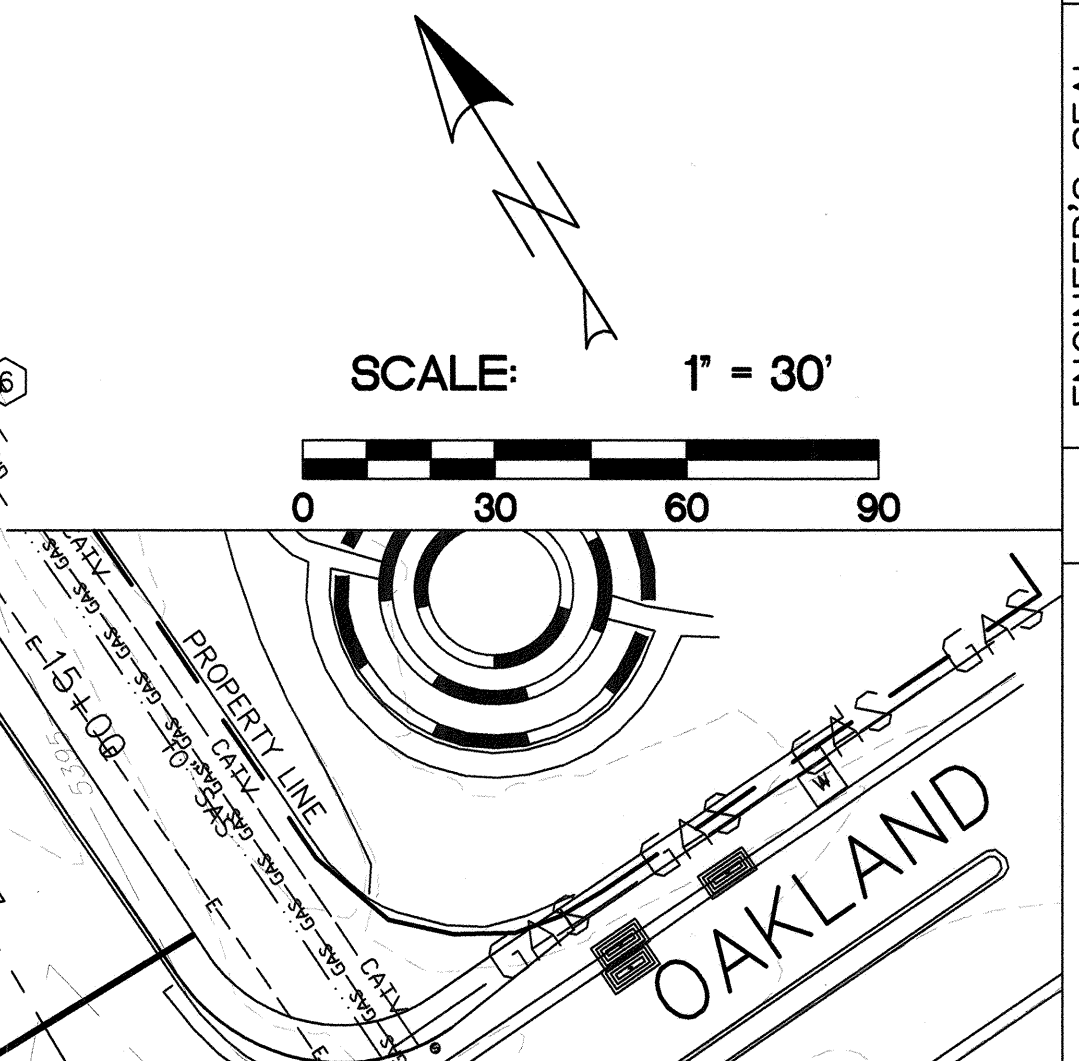
BH-07-01
PK NAIL W/ WASHER
GEOGRAPHIC POSITION: NAD 1983 (HARN)
NM STATE PLANE GROUND MODIFIED COORDINATES (CENTRAL ZONE)
X=1548222.89 Y=1523941.13
GROUND TO GRID FACTOR: 0.99964740
ELEVATION=5395.80 (NAVD 88)
THIS PANEL IS LOCATED APPROXIMATELY IN CENTER OF SOIL CEMENT BERM.

- NUMBERED NOTES
- 1 ARROYO STA 70+77.17 = EAGLE ROCK STA 12+76.82
X=1548123.13 Y=1524154.87
 - 2 ARROYO STA 74+41.08 = WYOMING STA 12+90.54
X=1548394.87 Y=1523936.74
 - 3 EAGLE ROCK STA 15+48.72 = WYOMING STA 10+74.58
X=1548395.68 Y=1524152.49
 - 4 TEMPORARY BENCHMARK BH-07-01
 - 5 4-4" PVC's WITH PHONE CABLE
 - 6 2-4" PVC's ABANDONED
 - 7 DIRECT BURIED PHONE CABLE

UTILITY LOCATION POTHOLE LIST				
NO.	TYPE	MATERIAL	DIA.	DEPTH TO TOP
1	COMMUNICATIONS	R.V.C	4"	72"
2	WATER	METALLIC	10"	66"
3 4	COULD NOT PENETRATE GROUTED RIP RAP			
5	COULD NOT LOCATE TO A DEPTH OF 112"			

UTILITY LOCATION DATA PROVIDED BY
ABASTO UTILITY LOCATING CO. INC.

NOTE: POTHOLE SPOT LOCATIONS ARE NOT SURVEYED.
LOCATIONS ARE BASED ON RADIUS FROM 3 MARKERS.
THE RADII DO NOT ALWAYS INTERSECT.



Resource Technology, Inc.

Civil Engineering 5501 Jefferson Blvd. NE, Suite 200
Environmental Sciences Albuquerque, New Mexico 87109
Water Resources E-mail: rti@rm.net
Landscape Architecture Telephone: (505) 243-7300
Planning Facsimile: (505) 243-7400

CITY OF ALBUQUERQUE
DEPARTMENT OF MUNICIPAL DEVELOPMENT

LA CUEVA ARROYO DIP REPLACEMENT
SURVEY CONTROL AND EXISTING UTILITIES

Design Review Committee: APPROVED OCT 17 2007
City Engineer Approval: APPROVED OCT 17 2007
Last Design Update: []

City Project No. 7848.02 Zone Map No. C-19 Sheet C3 Of 25