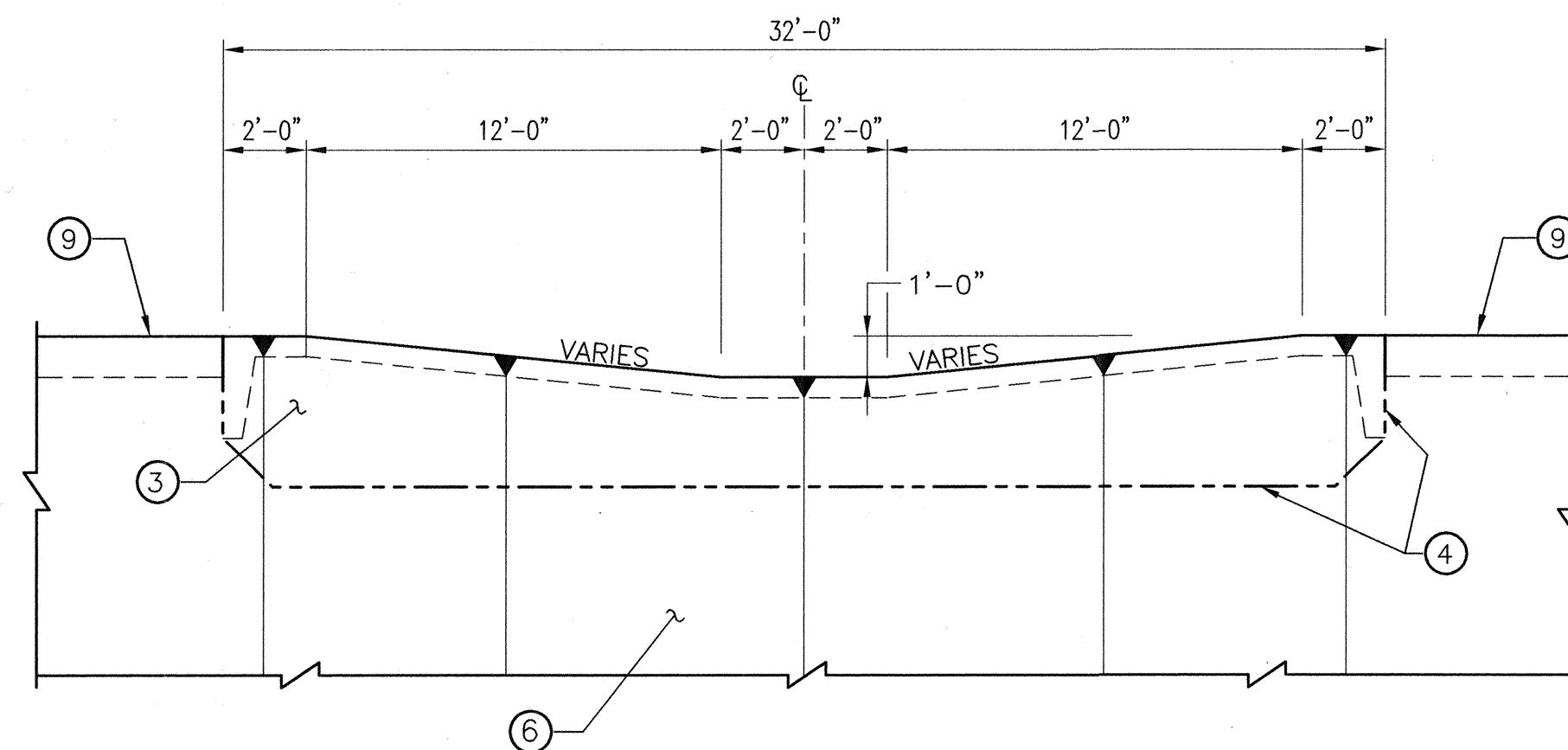
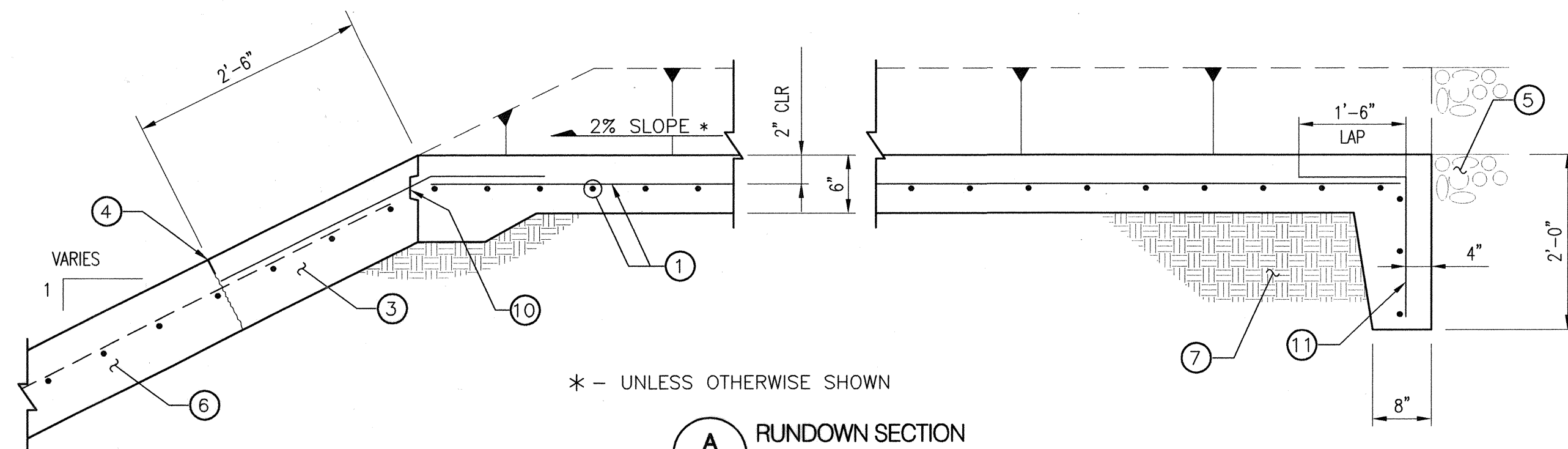


CONCRETE CHANNEL RUNDOWN PLAN



RUNDOWN ELEVATION



* - UNLESS OTHERWISE SHOWN

A S10 RUNDOWN SECTION

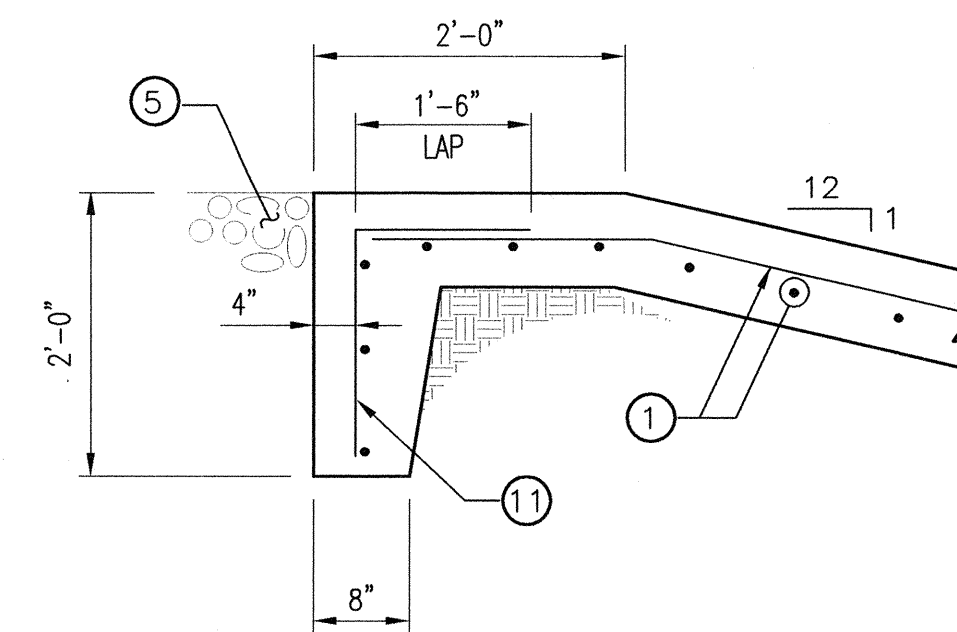
RUNDOWN SPOT ELEVATION SCHEDULE

RUNDOWN LOCATION (STA.)	A	B	C	D*	E*	F
69+14.72, 19.46 LT	5375.69	5374.98	5376.27	5375.64	5375.97	5375.34
'69+14.80, 19.03 RT	5376.27	5374.98	5375.69	5375.97	5375.64	5375.34

* NOTE: FOR STEEP CHANNELS, SPOT ELEVATIONS "D" AND "E" SHALL BE 3" (MIN.) HIGHER THAN SPOT ELEVATION "F"

NOTE: AS-BUILT INFORMATION SHOWN HEREIN IS BASED UPON INFORMATION PROVIDED BY THE CONTRACTOR AFTER COMPLETION OF THE PROJECT. NO ADDITIONAL MEASUREMENTS OR VERIFICATIONS WERE PERFORMED, AND NO CERTIFICATION IS MADE AS TO THE ACCURACY OR COMPLETENESS OF THAT INFORMATION.

DATE: 1-9-09



B S10 RUNDOWN SECTION

GENERAL NOTES:

- COPY ATTACHED
- ALL WORK ON THE CHANNEL LINING SHALL BE COMPLETED BETWEEN OCTOBER 15 AND MAY 15, WITH COMPLETE PROTECTION FROM INFILTRATION OF WATER TO THE SUBGRADE. (FOR WORK ON EXISTING CHANNELS ONLY)
- COMPLETE ARMORING OF THE CHANNEL SHALL BE IN PLACE BETWEEN MAY 15 AND OCTOBER 15. THE CONTRACTOR SHALL BE ALLOWED TO WORK WITHIN THE CHANNEL AT HIS OWN RISK, BUT SHALL NOT EXPOSE CHANNEL SUBGRADE DURING THIS TIME. (FOR WORK ON EXISTING CHANNELS ONLY)
- ALL EXPOSED CHANNEL SUBGRADE SHALL BE PROTECTED WITH TEMPORARY BACKFILL AND PLASTIC TO PREVENT STANDING WATER AND INFILTRATION INTO THE EXPOSED SUBGRADE PRIOR TO REPLACEMENT OF CHANNEL LINING. (FOR WORK ON EXISTING CHANNELS ONLY)
- SEE CONCRETE SLOPE PAVING REPLACEMENT DETAILS FOR NEW TO EXISTING CONSTRUCTION JOINT DETAILS.(FOR WORK ON EXISTING CHANNELS ONLY) SAW CUT EXISTING CONCRETE, SEE STANDARD DRAWING.
- PLACE ALL FILL @ 95% MODIFIED PROCTOR DENSITY.

KEYED NOTES

- RUNDOWNS SHALL BE CONSTRUCTED OF 6" THICK CONCRETE WITH #5 BARS AT 12" O.C.
- EXPOSED CONCRETE SURFACE OF THE RUNDOWN SHALL BE FINISHED WITH A LIGHT BROOM FINISH.
- EXISTING SLOPE PAVING TO BE REMOVED AND RESTORED. SEE CONCRETE SLOPE PAVING REPLACEMENT DETAILS AMAFCA STANDARD DRAWINGS. (FOR EXISTING CHANNEL ONLY)
- DELINEATE REMOVAL WITH 2" DEEP SAW CUT. (FOR EXISTING CHANNEL ONLY)
- NEW OR EXISTING BASECOURSE. REMOVE AND REPLACE AS REQUIRED.
- NEW OR EXISTING CHANNEL LINING.
- COMPACTED SUBGRADE - 95% MODIFIED PROCTOR
- PATH OR MAINTENANCE ROAD
- CHANNEL SILL
- 2" x 4" KEYED CONSTRUCTION JOINT
- #5 DOWEL @ 12" O.C.

DESIGN DATA

- A. CAST-IN-PLACE CONCRETE: F'C = 3000 PSI
- B. REINFORCING STEEL: ASTM A615 GRADE 60
- C. MOISTURE AND DENSITY CONTROL: ASTM D-1557
ALL FILL MATERIAL SHALL BE PLACED IN HORIZONTAL LIFTS OF 3" MAXIMUM AND COMPACTED TO 95 PERCENT OF MAXIMUM DRY DENSITY. THE MOISTURE CONTENT SHALL BE OPTIMUM TO 3 PERCENT ABOVE OPTIMUM.

Bohannon & Huston

Courtyard I 7800 Jefferson St. NE Albuquerque, NM 87109-4336
ENGINEERING • SPATIAL DATA • ADVANCED TECHNOLOGIES

Resource Technology, Inc.

Civil Engineering 5501 Jefferson Blvd. NE, Suite 200
Environmental Sciences Albuquerque, New Mexico 87109
Water Resources E-mail: rti@nm.net
Landscape Architecture Telephone: (505) 243-7300
Planning Facsimile: (505) 243-7400



CITY OF ALBUQUERQUE
DEPARTMENT OF MUNICIPAL DEVELOPMENT

LA CUEVA ARROYO DIP REPLACEMENT CONCRETE CHANNEL RUNDOWN PLAN

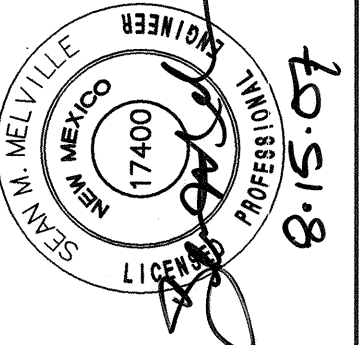
Design Review Committee	City Engineer Approval	Mo./Day/Yr.	Mo./Day/Yr.
APPROVED OCT 17 2007 DESIGN REVIEW COMMITTEE	APPROVED OCT 17 2007 CITY ENGINEER		
City Project No.	Zone Map No.	Sheet	Of

7848.02

C-19

S10

25



DESIGNED BY: SM
DRAWN BY: STB
CHECKED BY: SM

REVISIONS
No. Date By

DESIGN
No. Date By

Mo./Day/Yr.
Mo./Day/Yr.

Mo./Day/Yr.
Mo./Day/Yr.

Mo./Day/Yr.
Mo./Day/Yr.

Mo./Day/Yr.
Mo./Day/Yr.