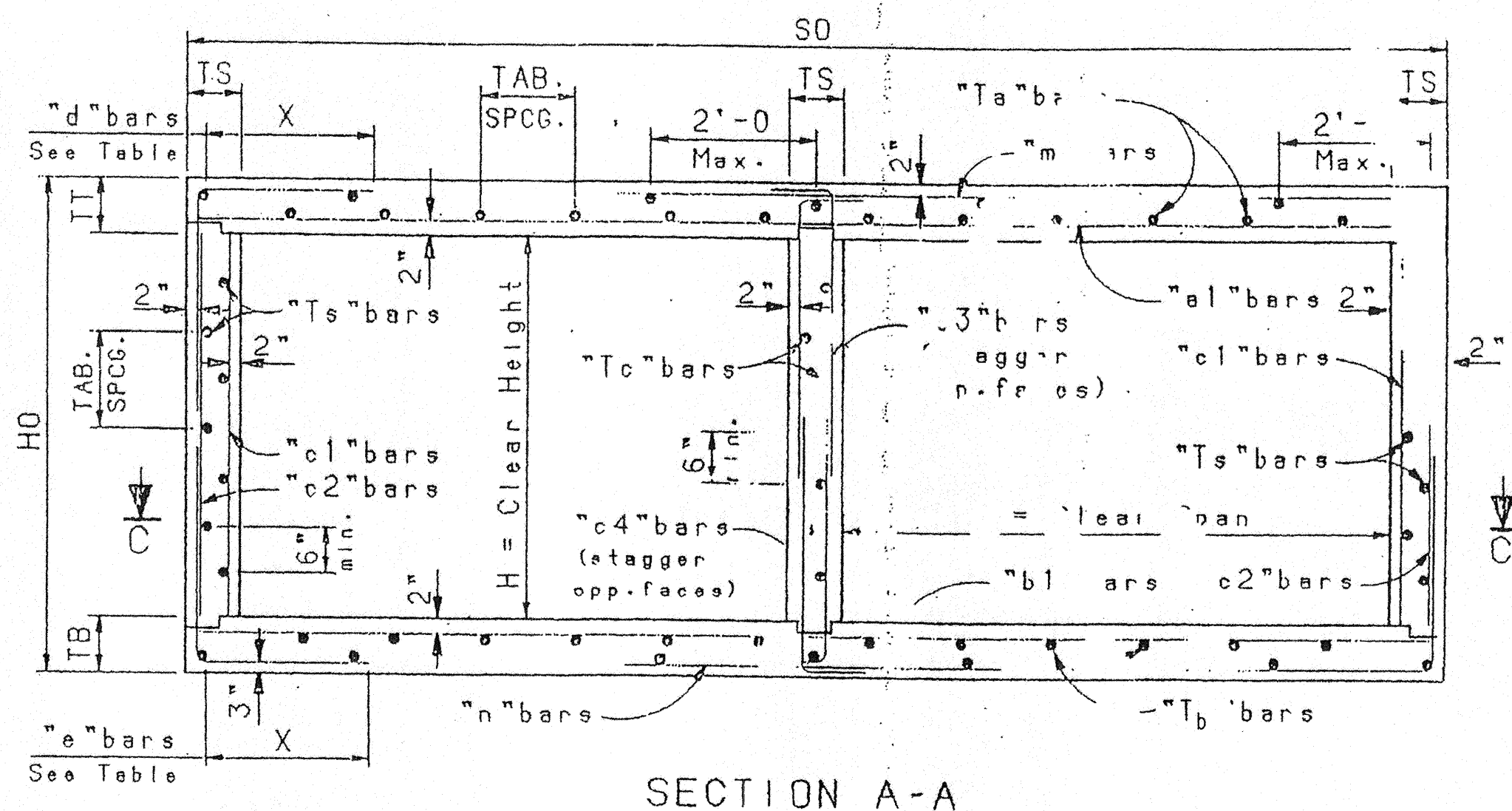
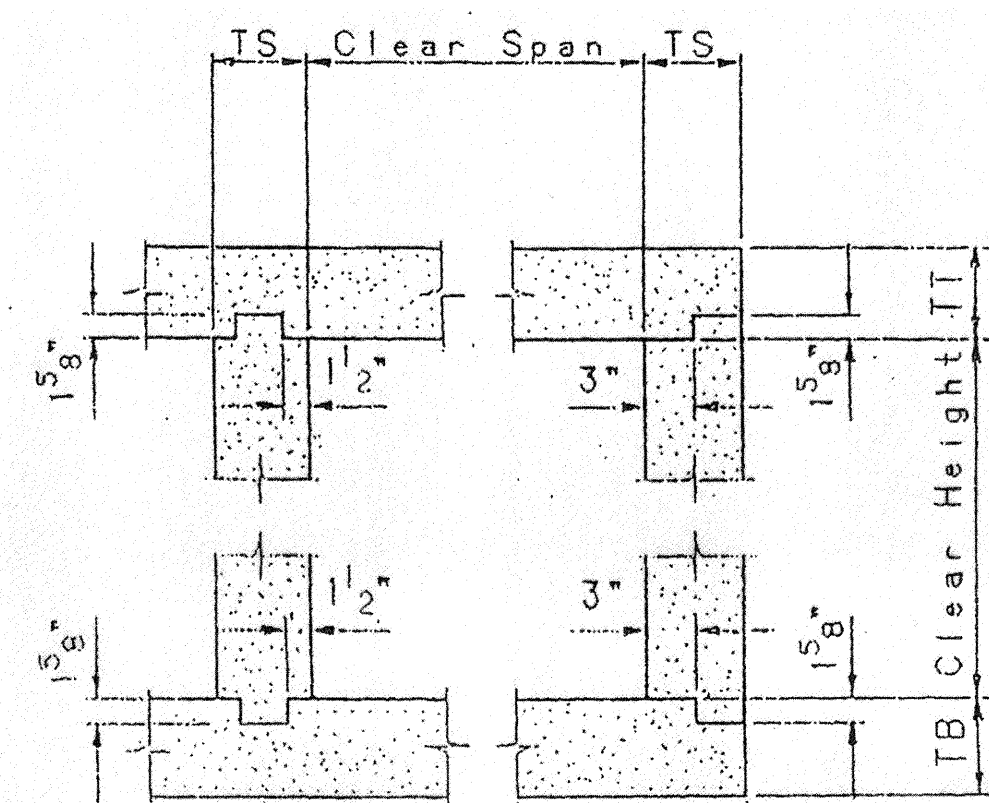


PART
SECTION C-C

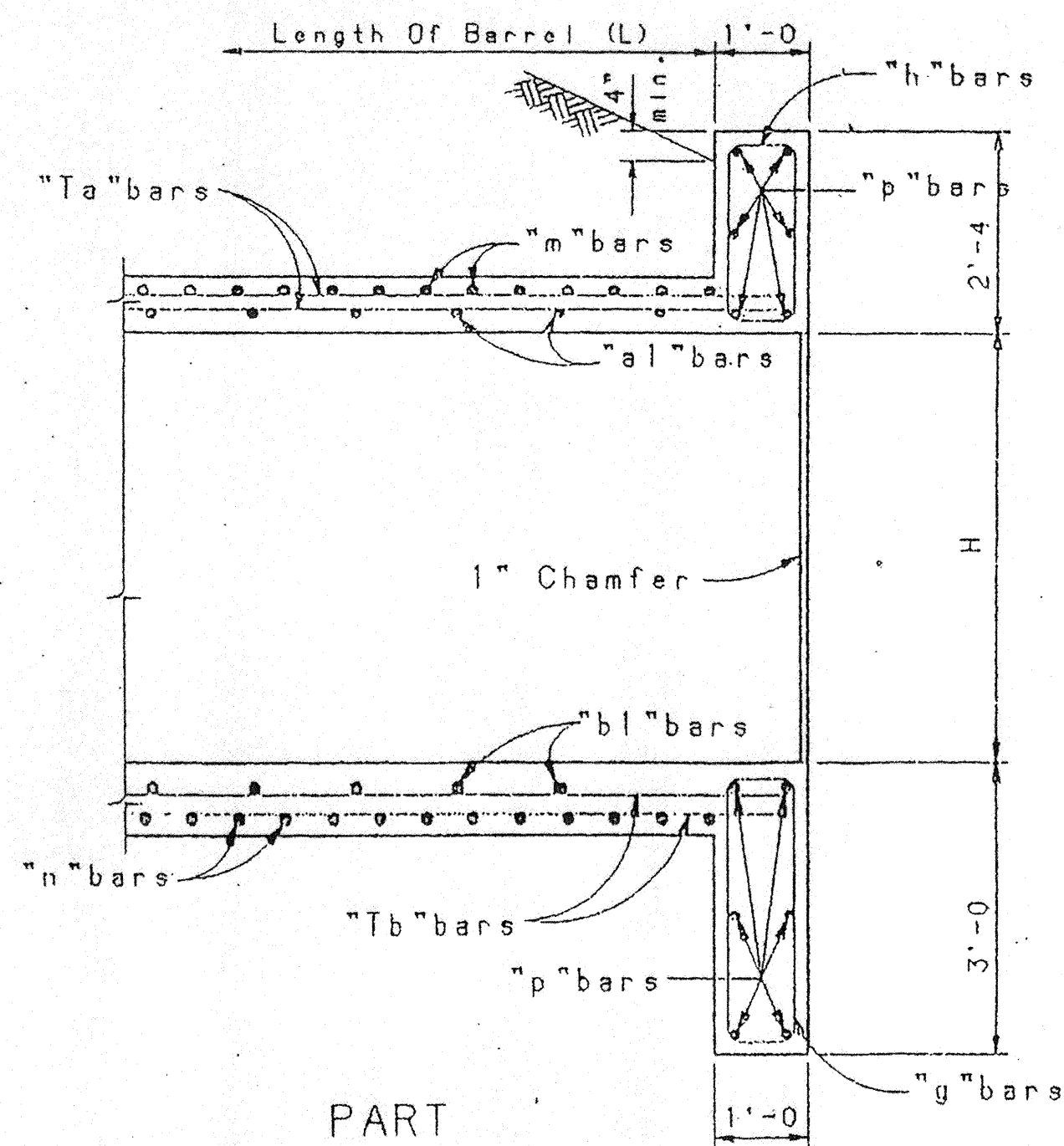
PART PLAN
TOP SLAB



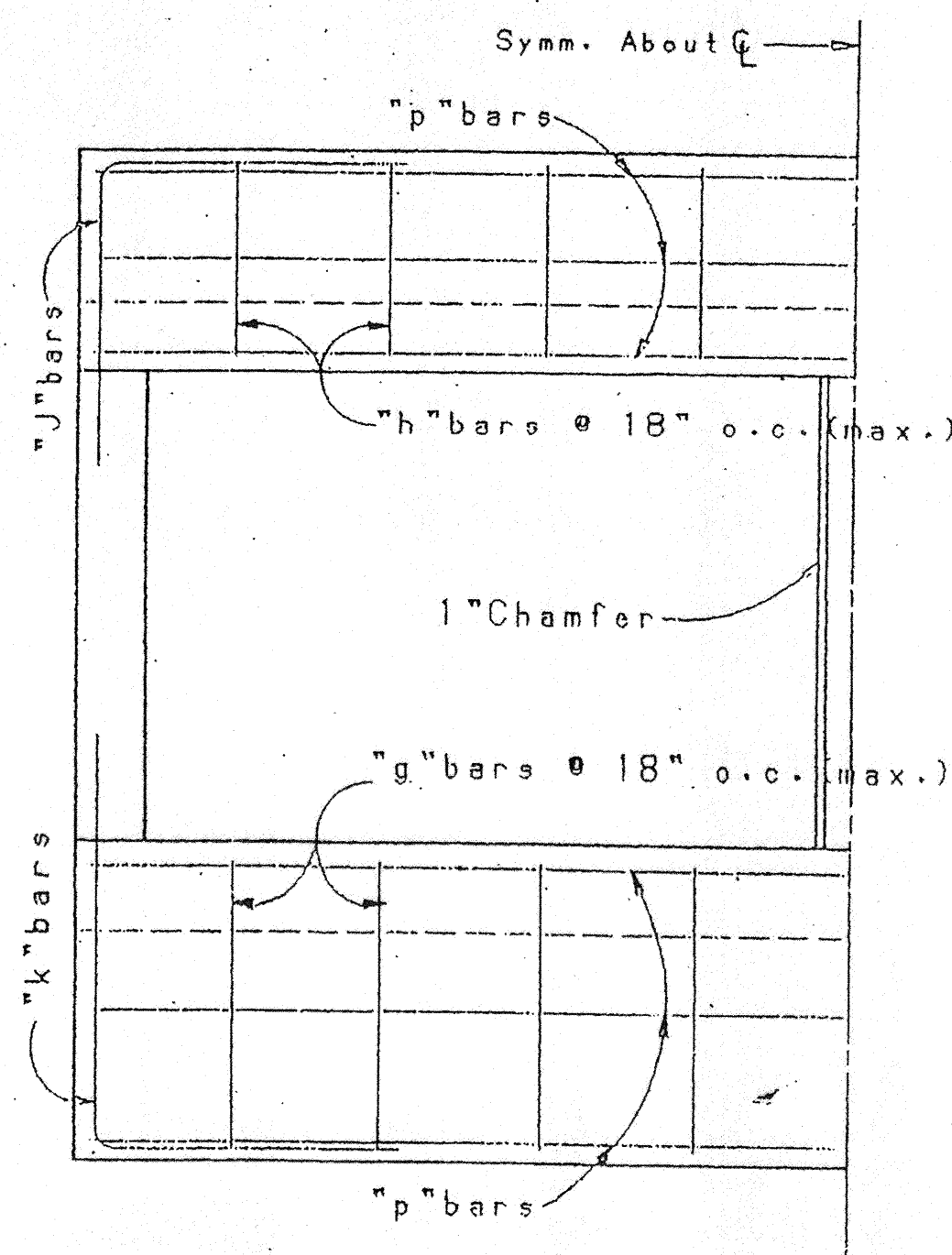
SECTION A-A



CONSTRUCTION JOINT DETAIL



PART
SECTION B-B



PART END ELEVATION

GENERAL NOTES

- NOT USED.
- ALL REINFORCING STEEL TO BE DEFORMED BARS. ALL DIMENSIONS REFER TO THE CENTERLINE OF BAR.
- "T" BARS MAY BE SPICED WHEN NECESSARY BY LAPPING AT LEAST 20 BAR DIAMETERS. COST OF THE SPICE MATERIAL TO BE INCLUDED IN UNIT PRICE BID FOR CBC CONCRETE.
- NOT USED.
- NOT USED.
- PLACE "Ta" BARS ON "a" BARS AND "Tb" BARS UNDER "b" BARS, SPACED AS SHOWN IN THE TABLE. THE REMAINING "Ta" BARS AND "Tb" BARS ARE TO BE PLACED ADJACENT TO THE "d", "e", "m", AND "n" BARS AS INDICATED IN "SECTION A-A".
- PLACE "Ts" BARS NEXT TO "c1" BARS, SPACED AS SHOWN IN THE TABLE. THE REMAINING "Ts" BARS TO BE PLACED IN SIDEWALL NEXT TO "c2", "d", AND "e" BARS. WHEN "c1" BARS ARE NOT REQUIRED PLACE ALL "Ts" BARS NEXT TO "c2", "d", AND "e" BARS.
- NOT USED.

DESIGN DATA

DESIGN ACCORDING TO A.A.S.H.T.O. SPECIFICATIONS, 1957.
LIVE LOAD : H20-S16-44 AND INTERSTATE ALTERNATE LOADING
WEIGHT OF FILL ON TOP OF BOX: 84#/CU. FT.
HORIZONTAL EARTH PRESSURE: 30#/CU. FT., 2 FT. SURCHARGE
DESIGN STRESSES: $f_c = 3000$ PSI, $f_t = 1200$ PSI.
 $f_s = 20,000$ PSI, $n = 10$.

NOTE:
AS-BUILT INFORMATION SHOWN HEREIN IS
BASED UPON INFORMATION PROVIDED BY THE
CONTRACTOR AFTER COMPLETION OF THE
PROJECT. NO ADDITIONAL MEASUREMENTS OR
VERIFICATIONS WERE PERFORMED, AND NO
CERTIFICATION IS MADE AS TO THE ACCURACY
OR COMPLETENESS OF THAT INFORMATION.

DATE: 1-9-09

NOTE:
THIS INFORMATION IS BASED ON NMDOT STD. DWG. CB-32, SHEET 1 OF 5.

Bohannon & Huston
Courtney I 7600 Jefferson St. NE Albuquerque, NM 87109-4335
ENGINEERING • SPATIAL DATA • ADVANCED TECHNOLOGIES

Resource Technology, Inc.
Civil Engineering 5501 Jefferson Blvd. NE, Suite 200
Environmental Sciences Albuquerque, New Mexico 87109
Water Resources E-mail: rti@nm.net
Landscape Architecture Telephone: (505) 243-7300
Planning Facsimile: (505) 243-7400



CITY OF ALBUQUERQUE
DEPARTMENT OF MUNICIPAL DEVELOPMENT

LA CUEVA ARROYO DIP REPLACEMENT
CBC DETAILS (1 OF 2)

Design Review Committee
APPROVED
OCT 17 2007
DESIGN REVIEW COMMITTEE

City Engineer Approval
APPROVED
OCT 17 2007
CITY ENGINEER

Mo./Day/Yr. Mo./Day/Yr.
Last Design Update
Mo./Day/Yr. Mo./Day/Yr.

City Project No. 7848.02 Zone Map No. C-19 Sheet S6 Of 25

BENCH MARKS			AS-BUILT INFORMATION		
ACS BRASS TABLE STAMPED "1-820".	CONTRACTOR	DATE	WORK	STAMPED BY	DATE
Intersection of Modesto Ave. & Borstow St.	INSPECTOR'S	DATE	INSPECTOR'S	DATE	DATE
Geographic Position (NAD 1927), in feet	FIELD	DATE	FIELD	DATE	DATE
N.M. State Plane Coordinates (Central Zone)	VERIFICATION BY	DATE	VERIFICATION BY	DATE	DATE
X= 410,237.56; Y= 1,524,092.46	CORRECTED BY	DATE	CORRECTED BY	DATE	DATE
Elevation = 5474.51 NGVD29, in feet	MICRO-FILM INFORMATION				
Interim Grid NAD83, in feet [X= 1,550,463.09 Y= 1,524,155.51]	RECORDED BY	DATE	RECORDED BY	DATE	DATE
C.G. Factor: 0.9996740; Elevation = 5477.18 Interim NAD83	NO.		NO.		
Transformed to Interim by Program V 6.01					



8-15-07